

Oldcastle BuildingEnvelope®

1-866-Oldcastle (653-2278) - www.obe.com

SERIES 3000 THERMAL MULTIPLANE STOREFRONT 2" X 4-1/2" w/ 1" TYP. INFILL / MULTI SET

Elevation

Horizontal Details

H0901	Intermediate Horizontal - Center Set / Outside Glazed
H0902	Head - Outside Glazed - Center Set / Outside Glazed
H0903	Sill - Center Set / Outside Glazed Option 1
H0910	Sill - Center Set / Outside Glazed Option 2
H0914	Intermediate Horizontal - Center Set / Inside Glazed
H0915	Head - Center Set / Inside Glazed
H0916	Sill - Center Set / Inside Glazed Option 1
H0917	Sill - Center Set / Inside Glazed Option 2
H4101	Intermediate Horizontal - Front Set / Outside Glazed
H4102	Head - Front Set / Outside Glazed
H4103	Sill - Front Set / Inside Glazed Option 1
H4109	Sill - Front Set / Inside Glazed Option 2
H4114	Intermediate Horizontal - Front Set / Inside Glazed
H4115	Head - Front Set / Inside Glazed
H4501	Intermediate Horizontal - Back Set / Outside Glazed
H4502	Head - Back Set / Inside Glazed

H4503	Sill - Back Set / Inside Glazed Option 1
H4509	Sill - Back Set / Inside Glazed Option 2
H4514	Intermediate Horizontal - Back Set / Inside Glazed
H4515	Head - Back Set / Inside Glazed

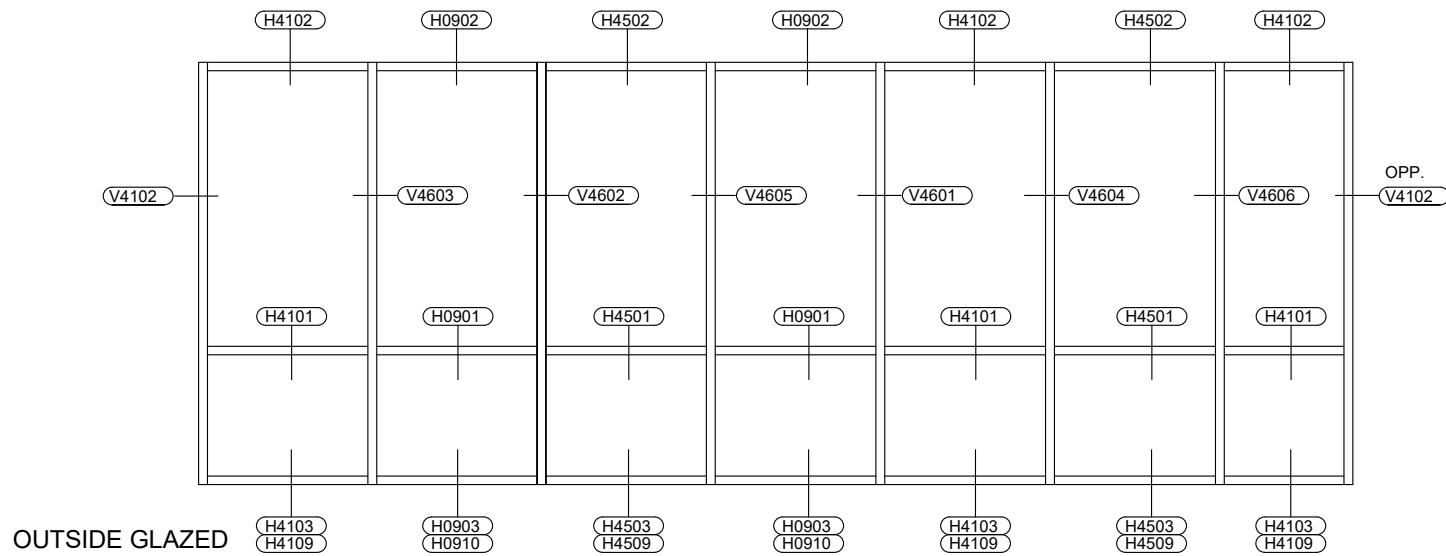
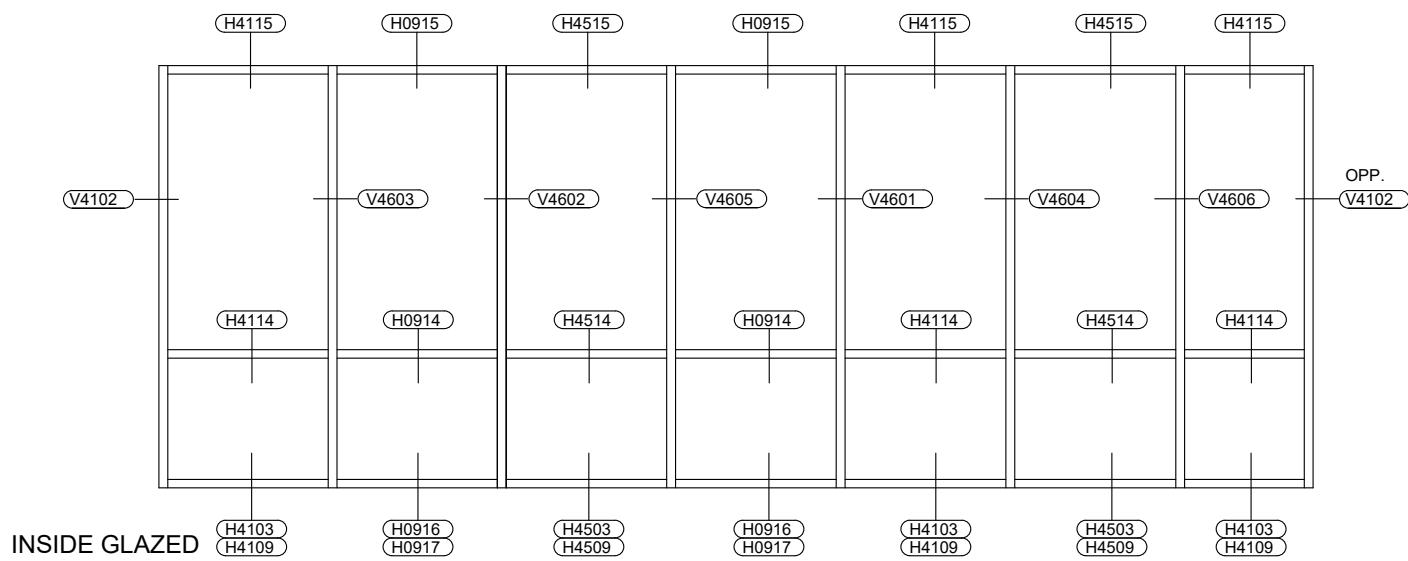
Vertical Details

V4102	Jamb - Front Set
V4601	Vertical at Transition - Center Set to Front Set
V4602	Vertical at Transition - Center Set to Back Set
V4603	Vertical at Transition - Front Set to Center Set
V4604	Vertical at Transition - Front Set to Back Set
V4605	Vertical at Transition - Back Set to Center Set
V4606	Vertical at Transition - Back Set to Front Set

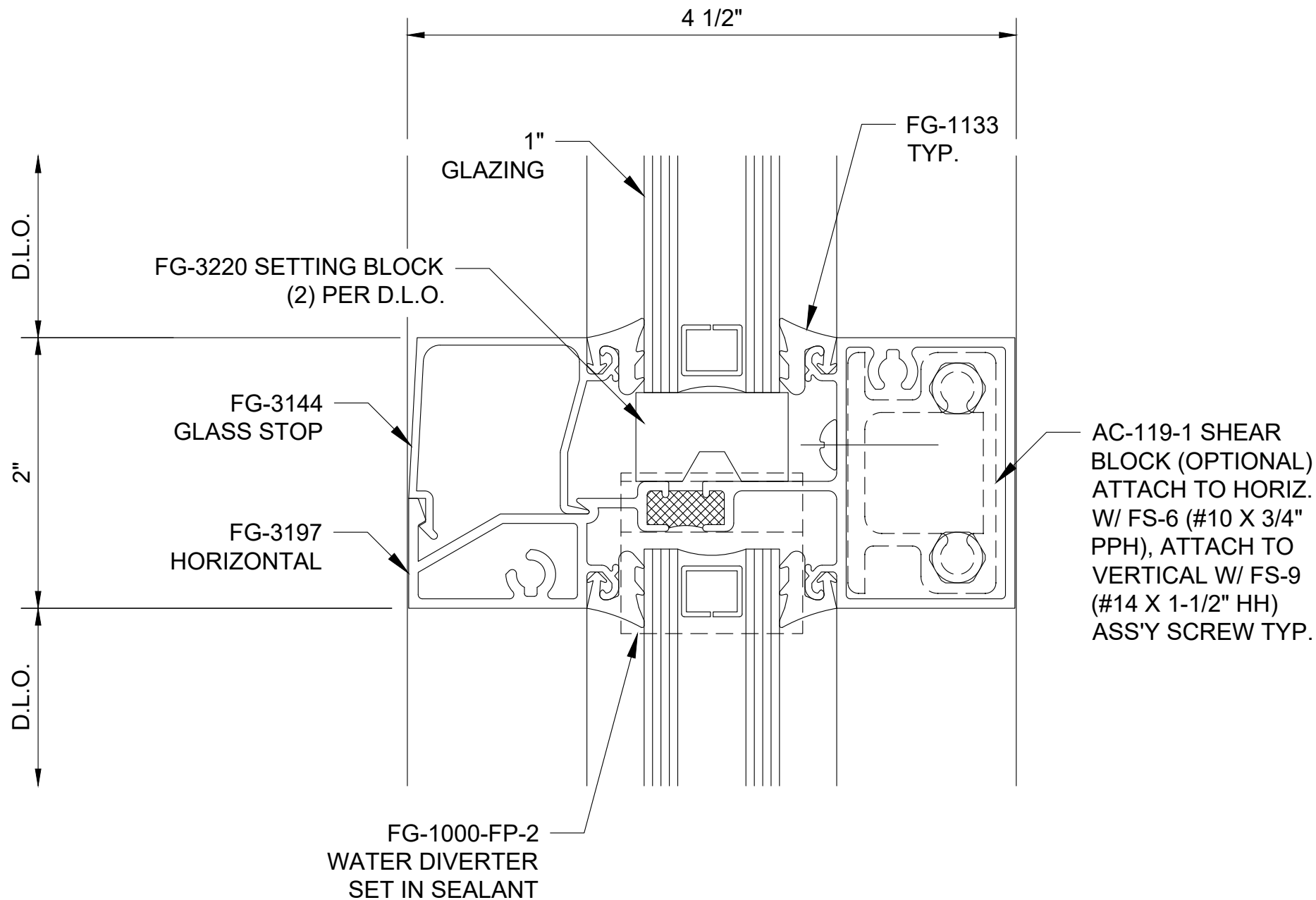
Miscellaneous Details

M0950	Subsill Splicing and End Dams
M4601	Perimeter Filler Options

Table of Contents

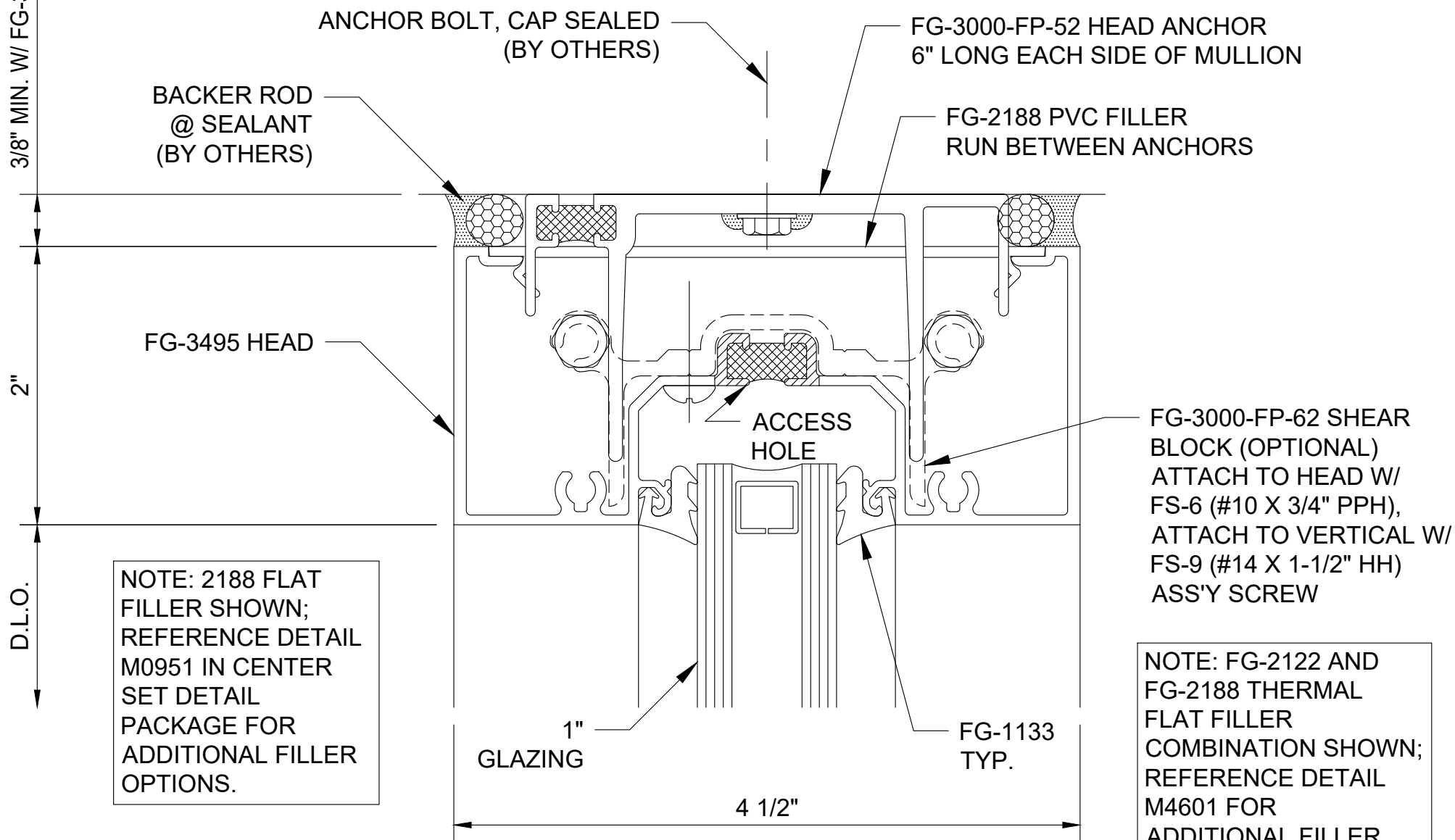


Series 3000 Thermal MultiPlane Storefront - Multi-Set 2" x 4-1/2" w/ 1" Glazing - Elevation

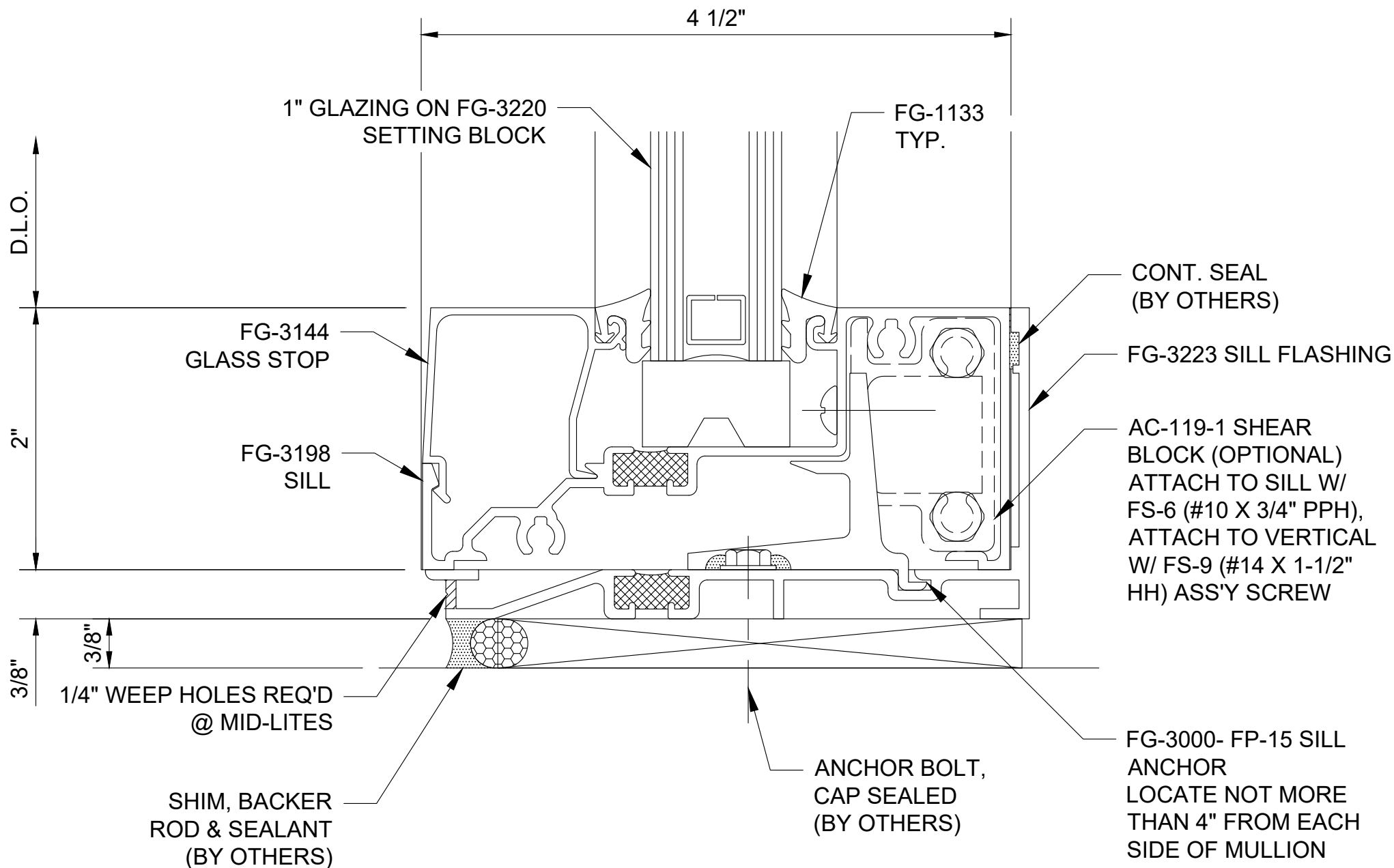


**Series 3000 - Thermal MultiPlane - Center Set
Intermediate Horizontal - H0901**

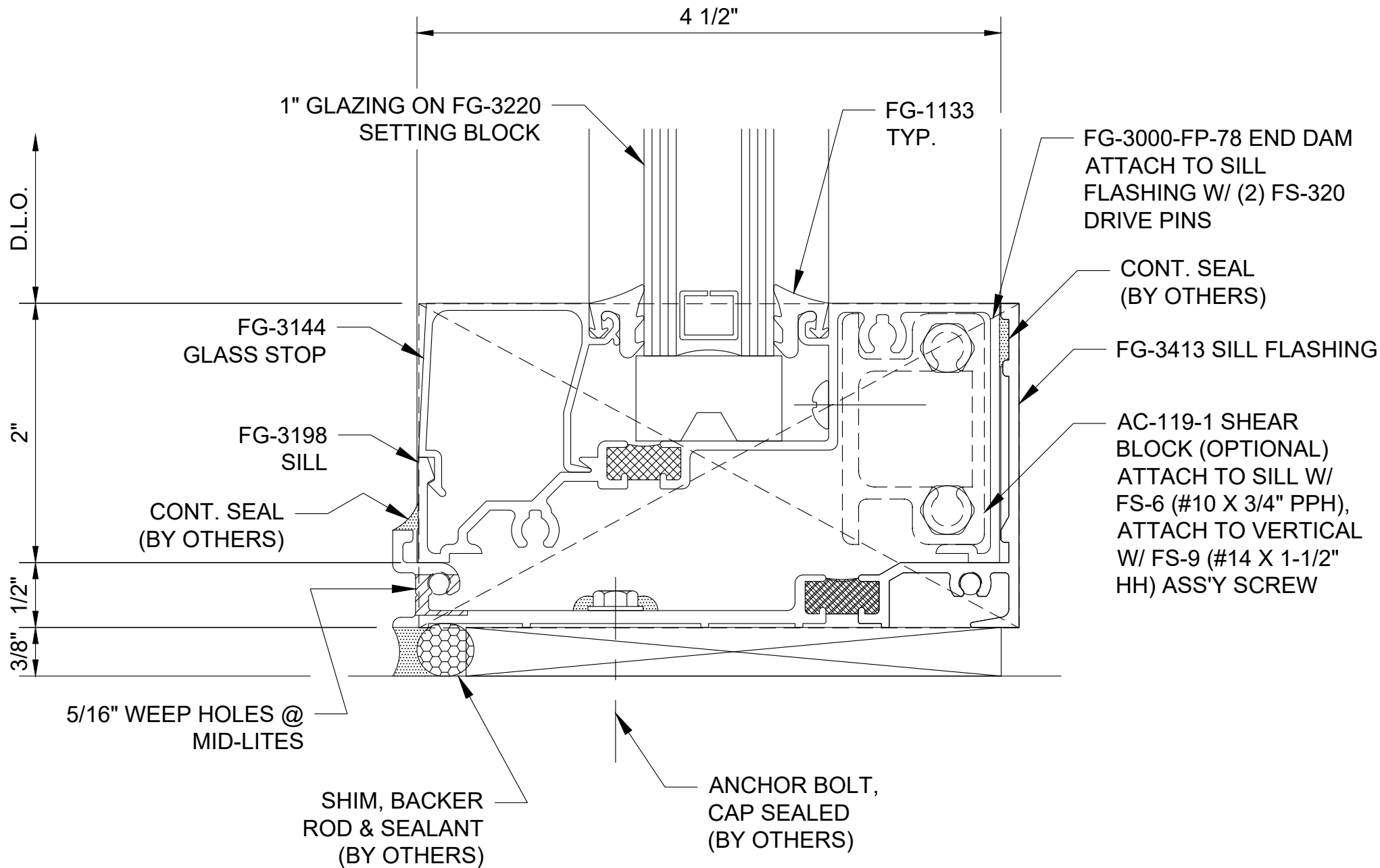
1/4" MIN. W/ FG-3223 SUB SILL
3/8" MIN. W/ FG-3413 SUB SILL



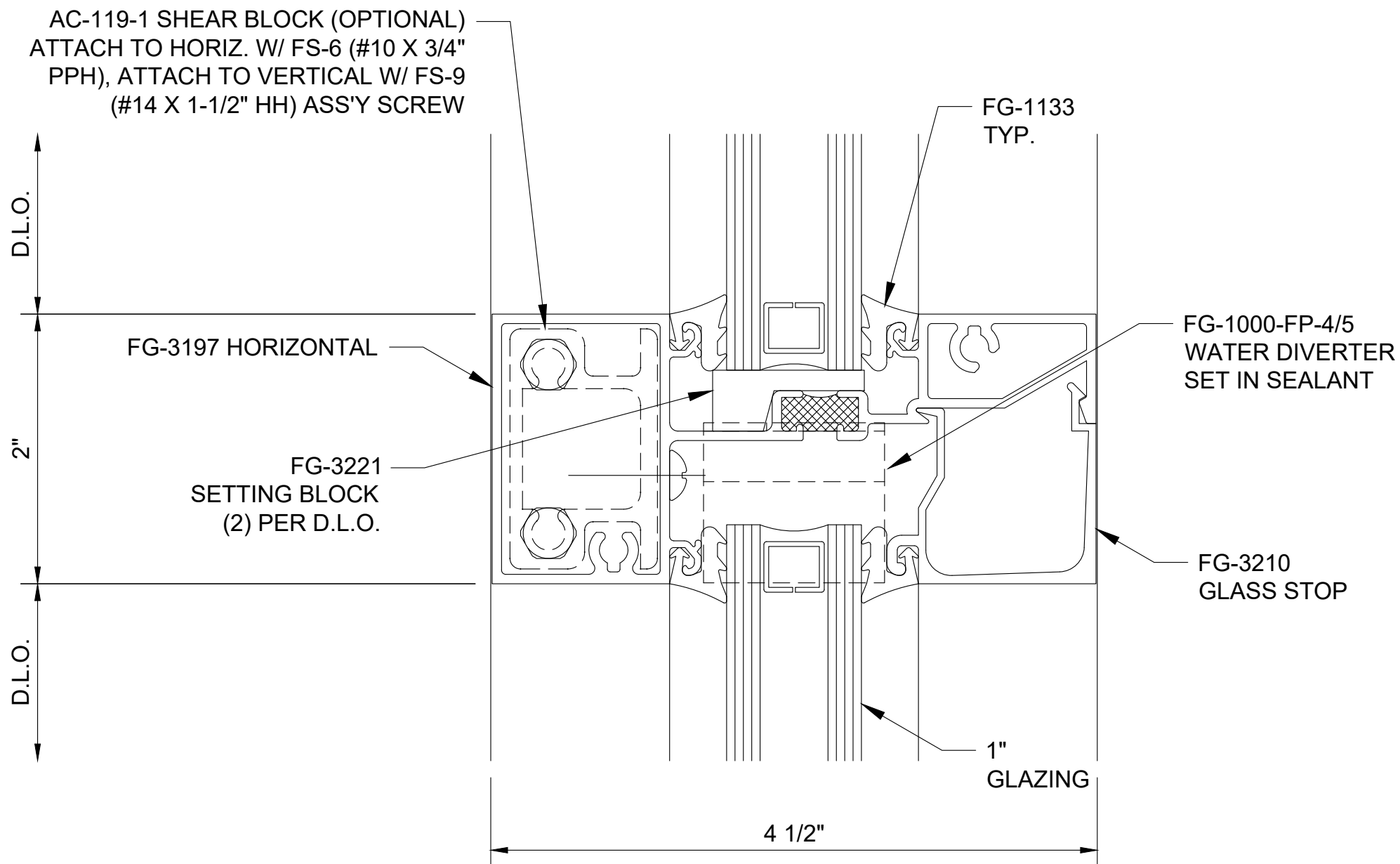
**Series 3000 - Thermal MultiPlane - Center Set
Head Horizontal - H0902**



Series 3000 - Thermal MultiPlane - Center Set Sill Horizontal - H0903

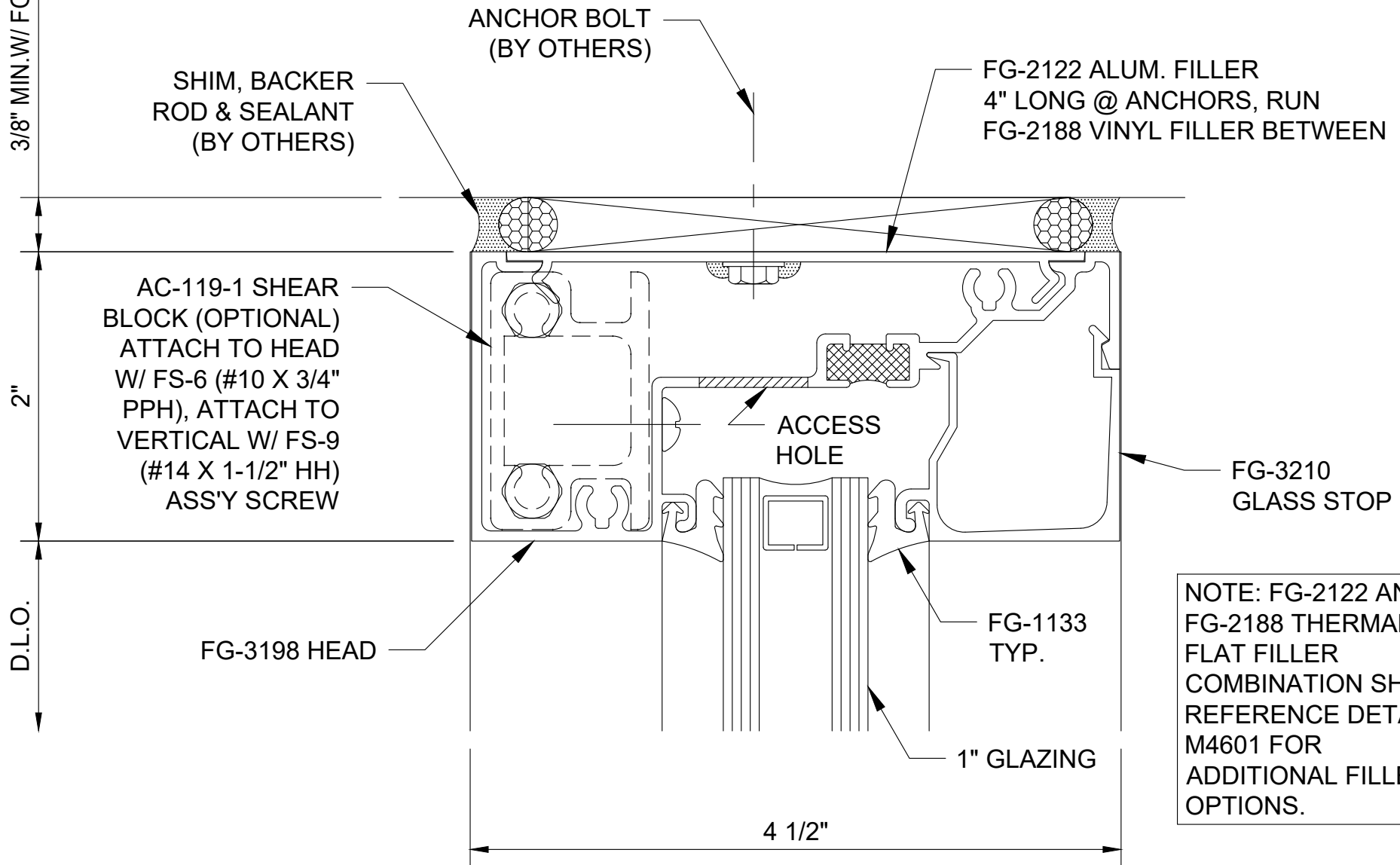


Series 3000 - Thermal MultiPlane - Center Set **Sill Horizontal - H0910**

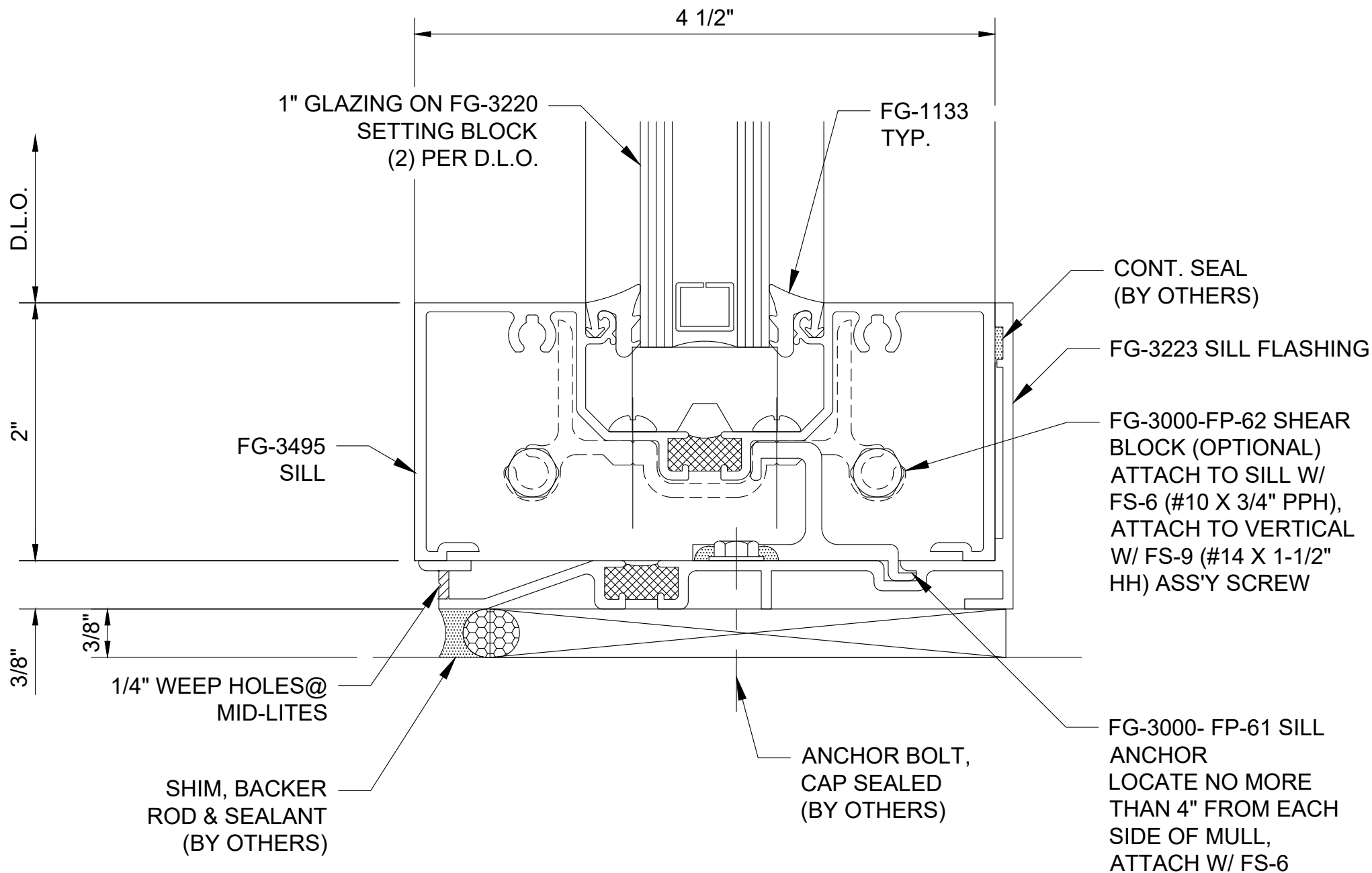


**Series 3000 - Thermal MultiPlane - Center Set
Intermediate Horizontal - H0914**

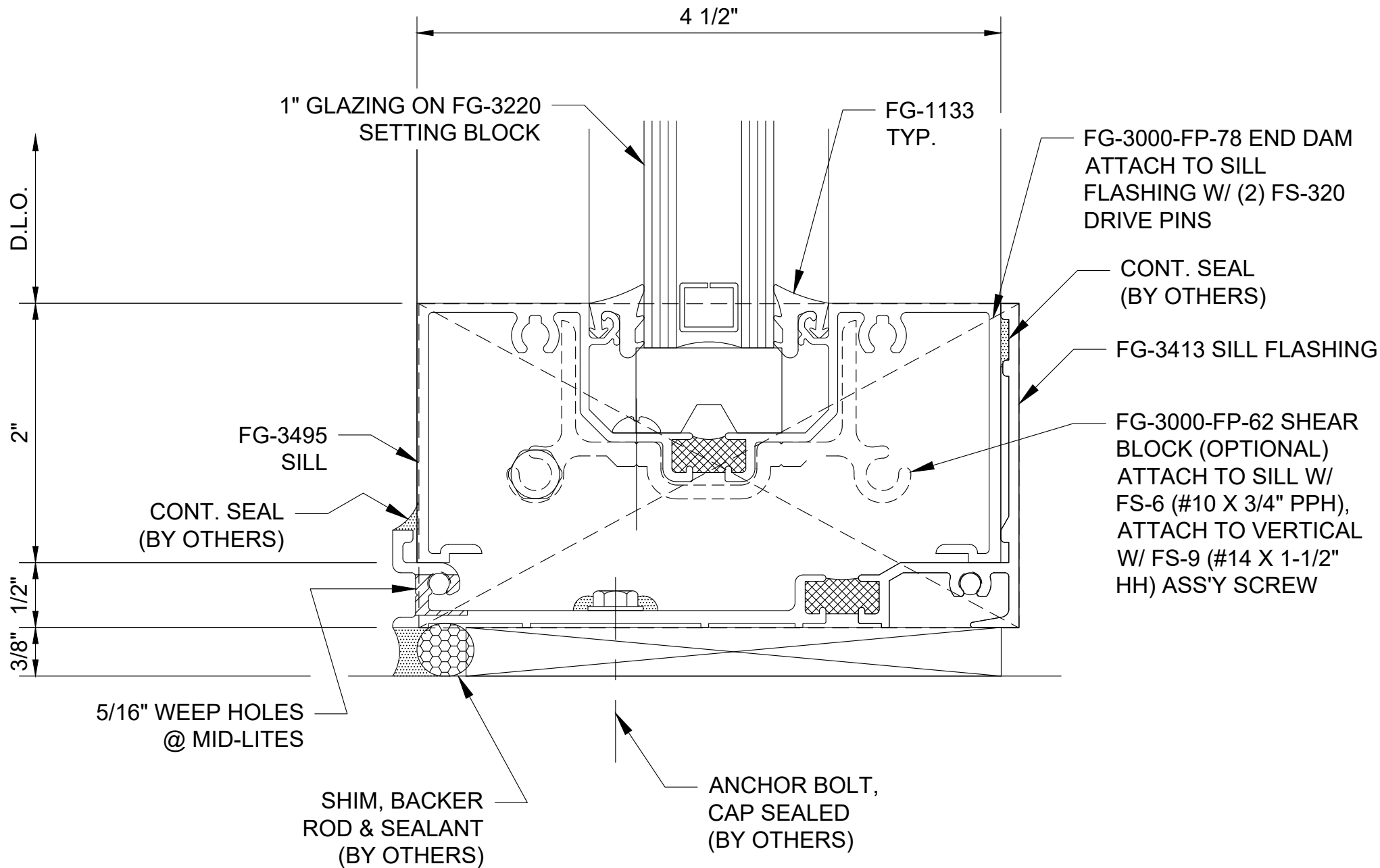
1/4" MIN. W/ FG-3223 SUBSILL
3/8" MIN. W/ FG-3413 SUBSILL



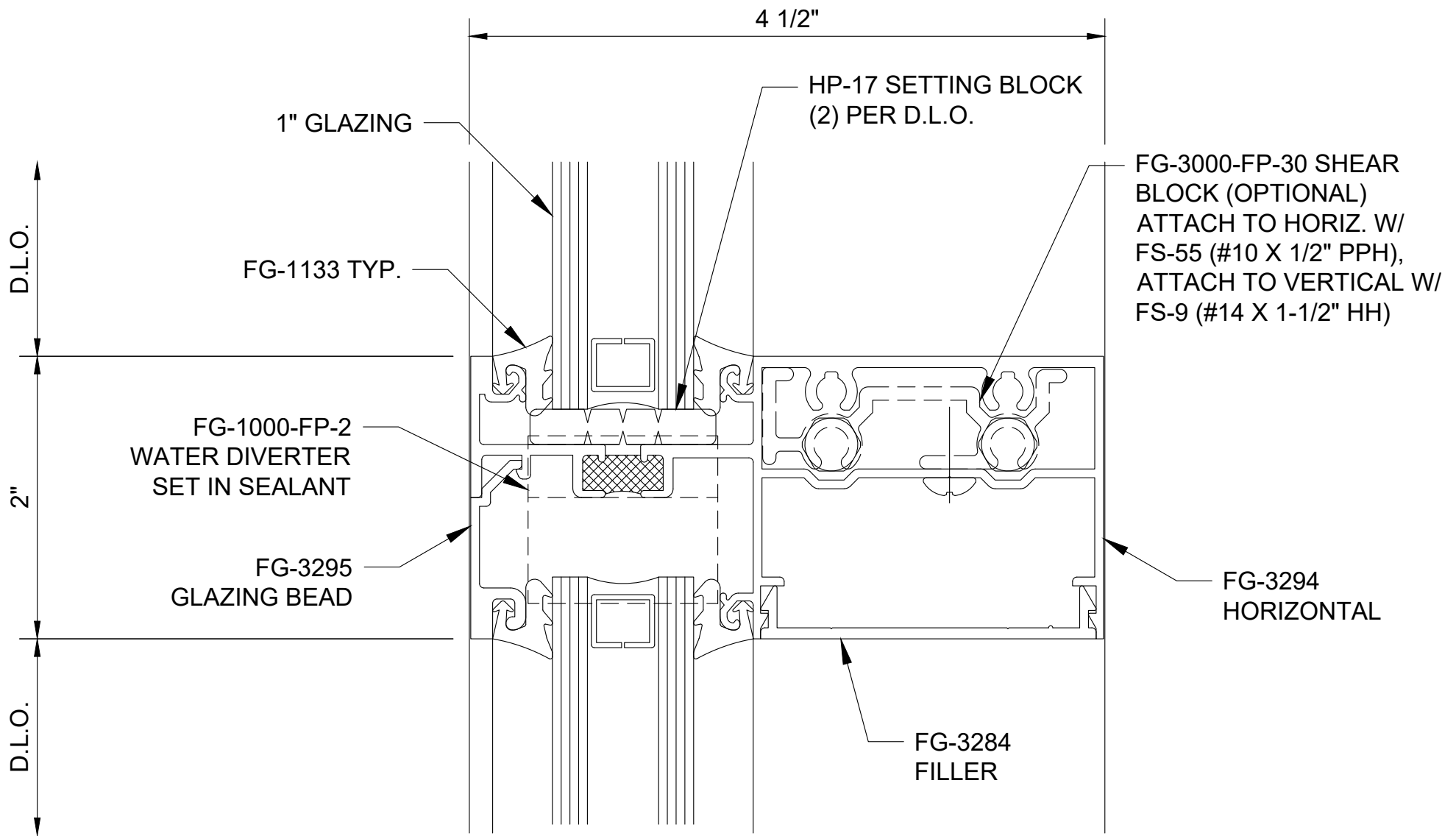
**Series 3000 - Thermal MultiPlane - Center Set
Head Horizontal - H0915**



Series 3000 - Thermal MultiPlane Sill Horizontal - H0916

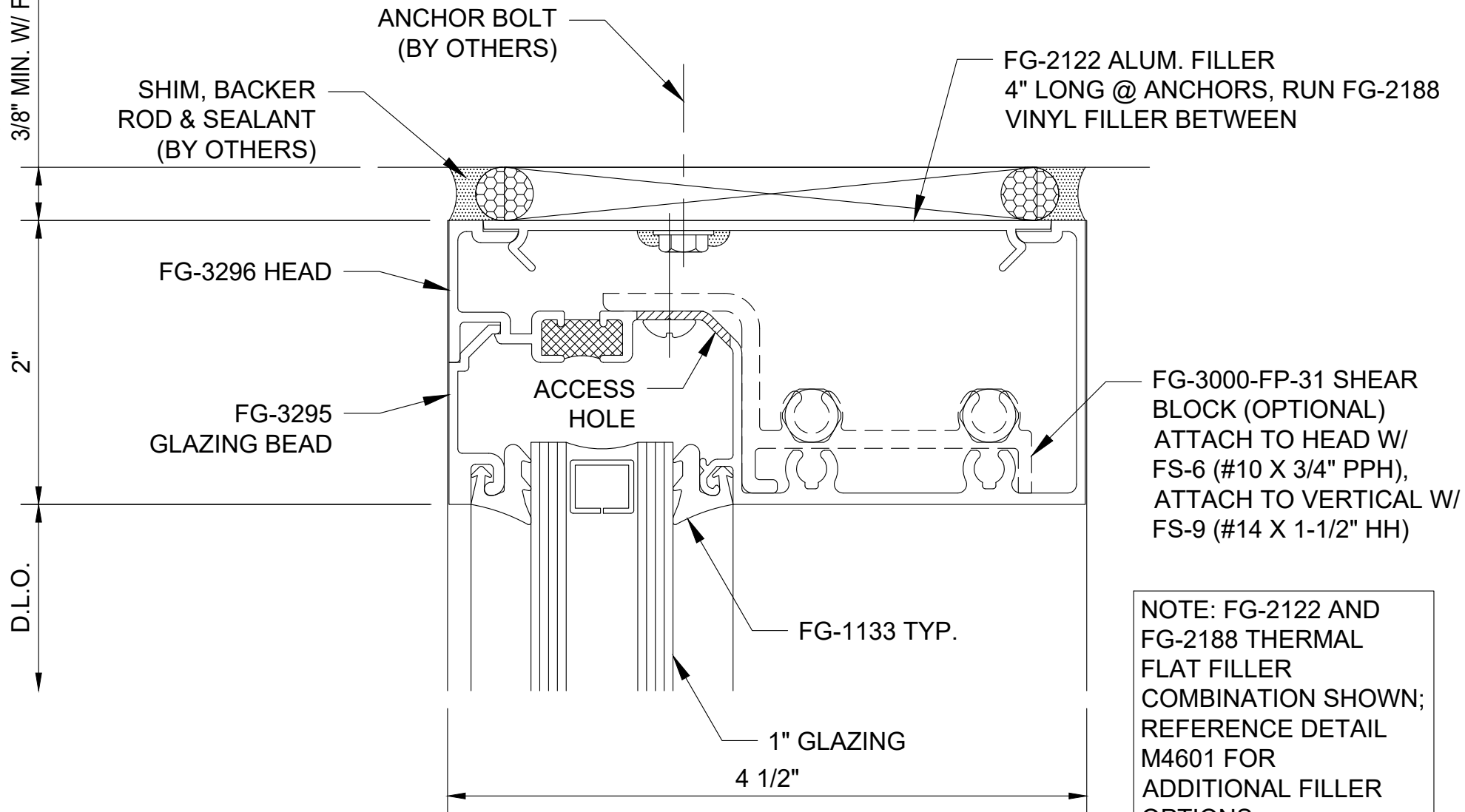


Series 3000 - Thermal MultiPlane - Center Set
Sill Horizontal - H0917

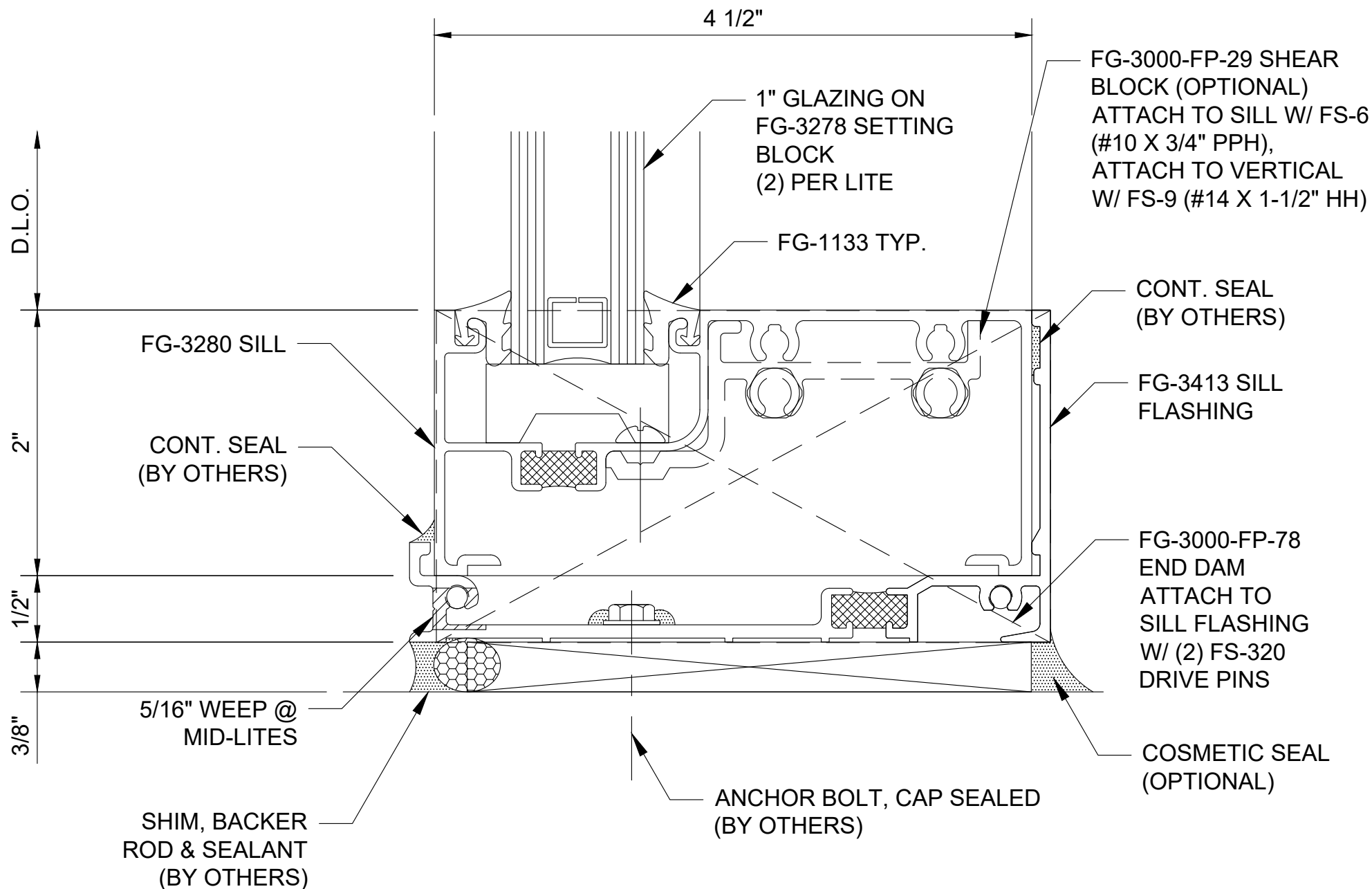


**Series 3000 - Thermal MultiPlane - Front Set
Intermediate Horizontal - H4101**

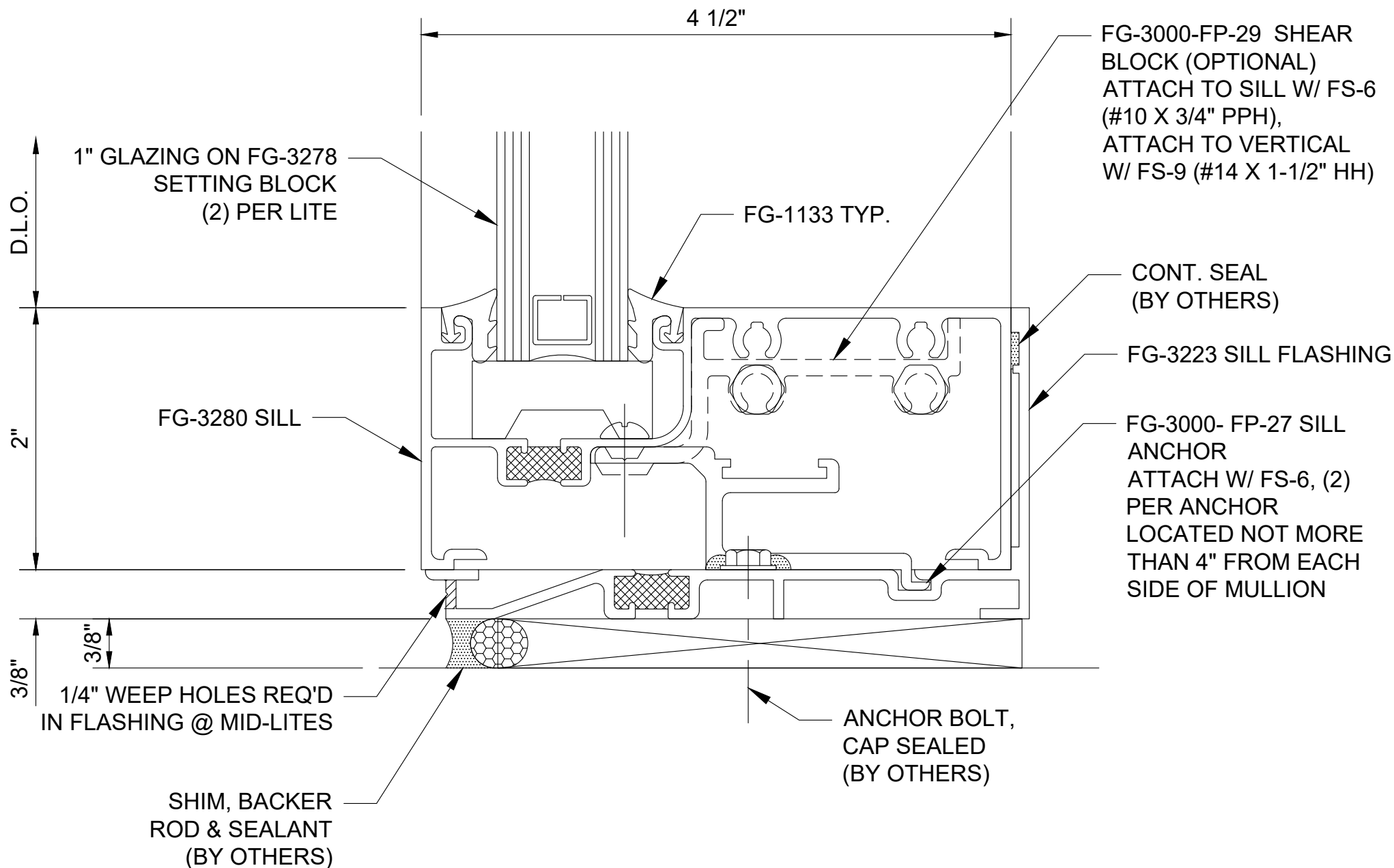
1/4" MIN. W/ FG-3223 SUBSILL
3/8" MIN. W/ FG-3413 SUBSILL



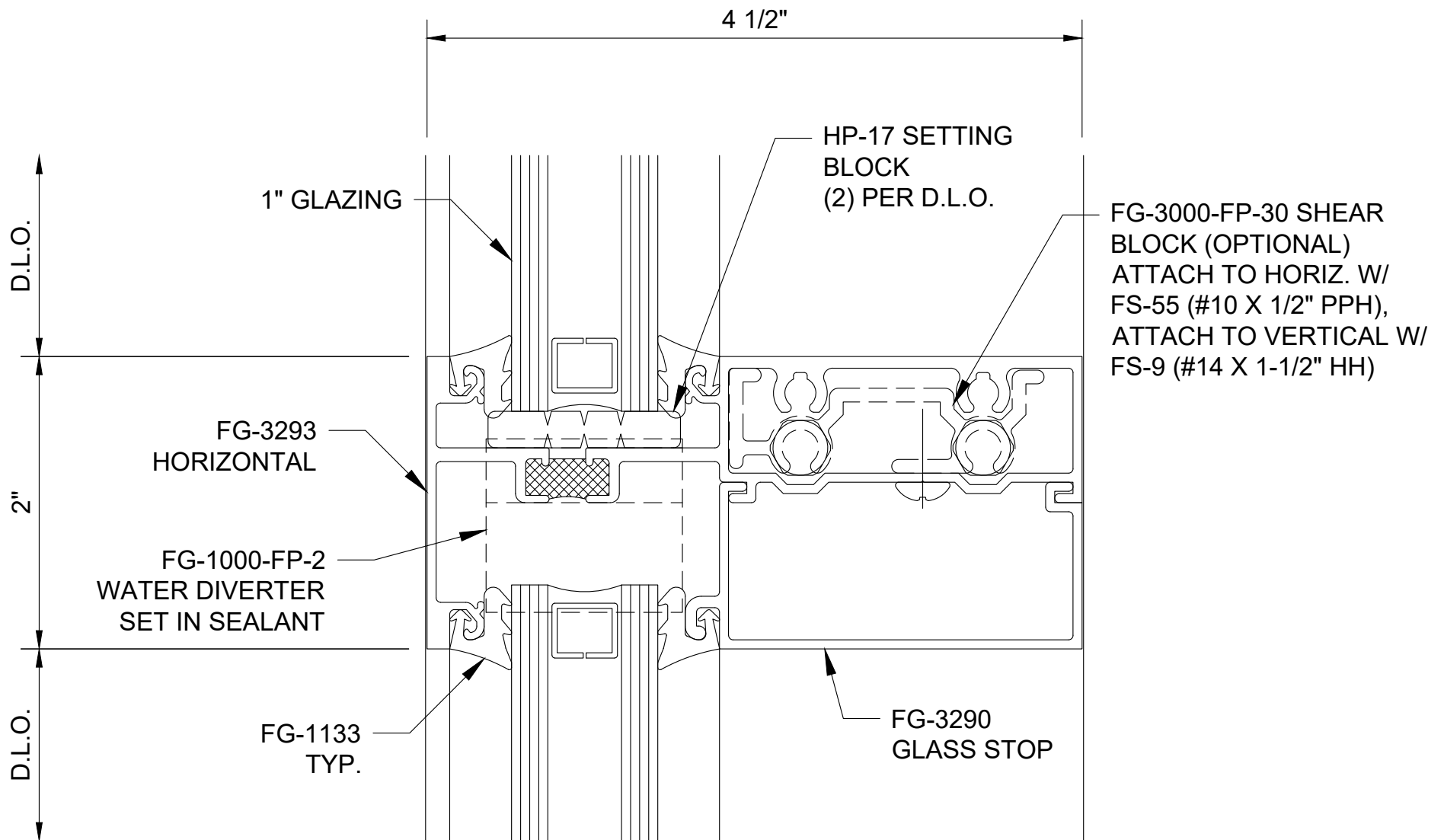
Series 3000 - Thermal MultiPlane - Front Set Head - H4102



Series 3000 - Thermal MultiPlane - Front Set Sill Horizontal - H4103



Series 3000 - Thermal MultiPlane - Front Set Sill Horizontal - H4109



Series 3000 - Thermal MultiPlane - Front Set
Intermediate Horizontal - H4114

1/4" MIN. W/ FG-3223 SILL
3/8" MIN. W/ FG-3413 SILL

2"

D.L.O.

FG-2122 ALUM. FILLER
4" LONG @ ANCHORS,
RUN FG-2188 VINYL
FILLER BETWEEN

ANCHOR BOLT,
CAP SEALED
(BY OTHERS)

SHIM, BACKER
ROD & SEALANT
(BY OTHERS)

FG-3291 HEAD

FG-3000-FP-30 SHEAR
BLOCK (OPTIONAL)
ATTACH TO HEAD W/
FS-55 (#10 X 1/2" PPH),
ATTACH TO VERTICAL W/
FS-9 (#14 X 1-1/2" HH)

ACCESS
HOLE

FG-1133 TYP.

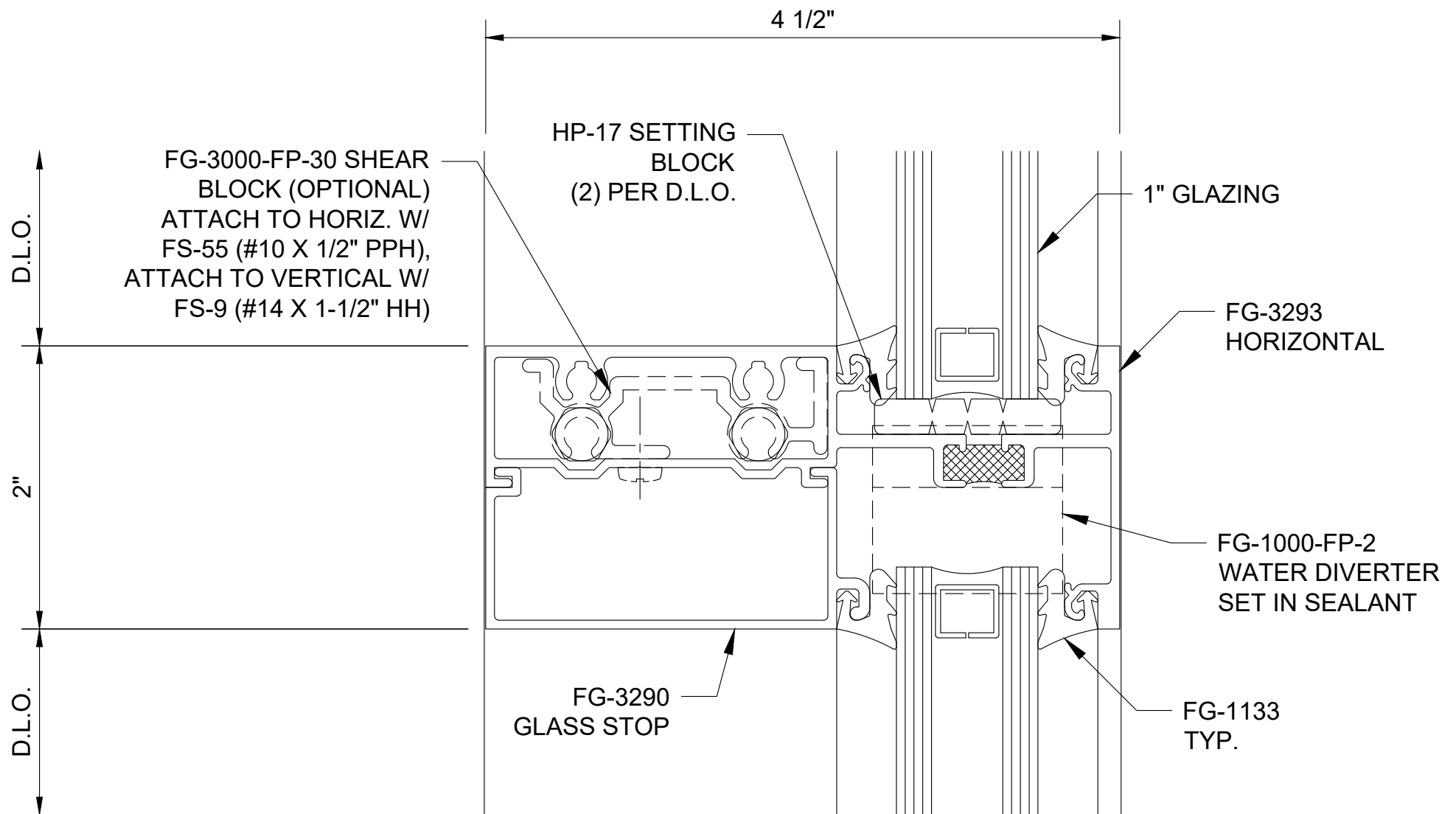
FG-3290
GLASS STOP

1" GLAZING

4 1/2"

NOTE: FG-2122 AND
FG-2188 THERMAL
FLAT FILLER
COMBINATION SHOWN;
REFERENCE DETAIL
M4601 FOR
ADDITIONAL FILLER
OPTIONS.

Series 3000 - Thermal MultiPlane - Front Set Head - H4115



Series 3000 - Thermal MultiPlane - Back Set Intermediate Horizontal - H4501

1/4" MIN. W/ FG-3223 SILL
3/8" MIN. W/ FG-3413 SILL

NOTE: FG-2122 AND FG-2188
THERMAL FLAT FILLER COMBINATION
SHOWN; REFERENCE DETAIL M4601
FOR ADDITIONAL FILLER OPTIONS.

SHIM, BACKER
ROD & SEALANT
(BY OTHERS)

ANCHOR BOLT,
CAP SEALED
(BY OTHERS)

FG-2122 ALUM. FILLER
4" LONG @ ANCHORS,
RUN FG-2188 VINYL
FILLER BETWEEN

FG-3000-FP-30 SHEAR
BLOCK (OPTIONAL)
ATTACH TO HEAD W/
FS-55 (#10 X 1/2" PPH),
ATTACH TO VERTICAL W/
FS-9 (#14 X 1-1/2" HH)

2"

D.L.O.

NOTE: FG-2122 / 2188
FLAT FILLER
COMBINATION
SHOWN; REFERENCE
DETAIL M4551 IN
BACK SET DETAIL
PACKAGE FOR
ADDITIONAL FILLER
OPTIONS.

ACCESS
HOLE

FG-3290
GLASS STOP

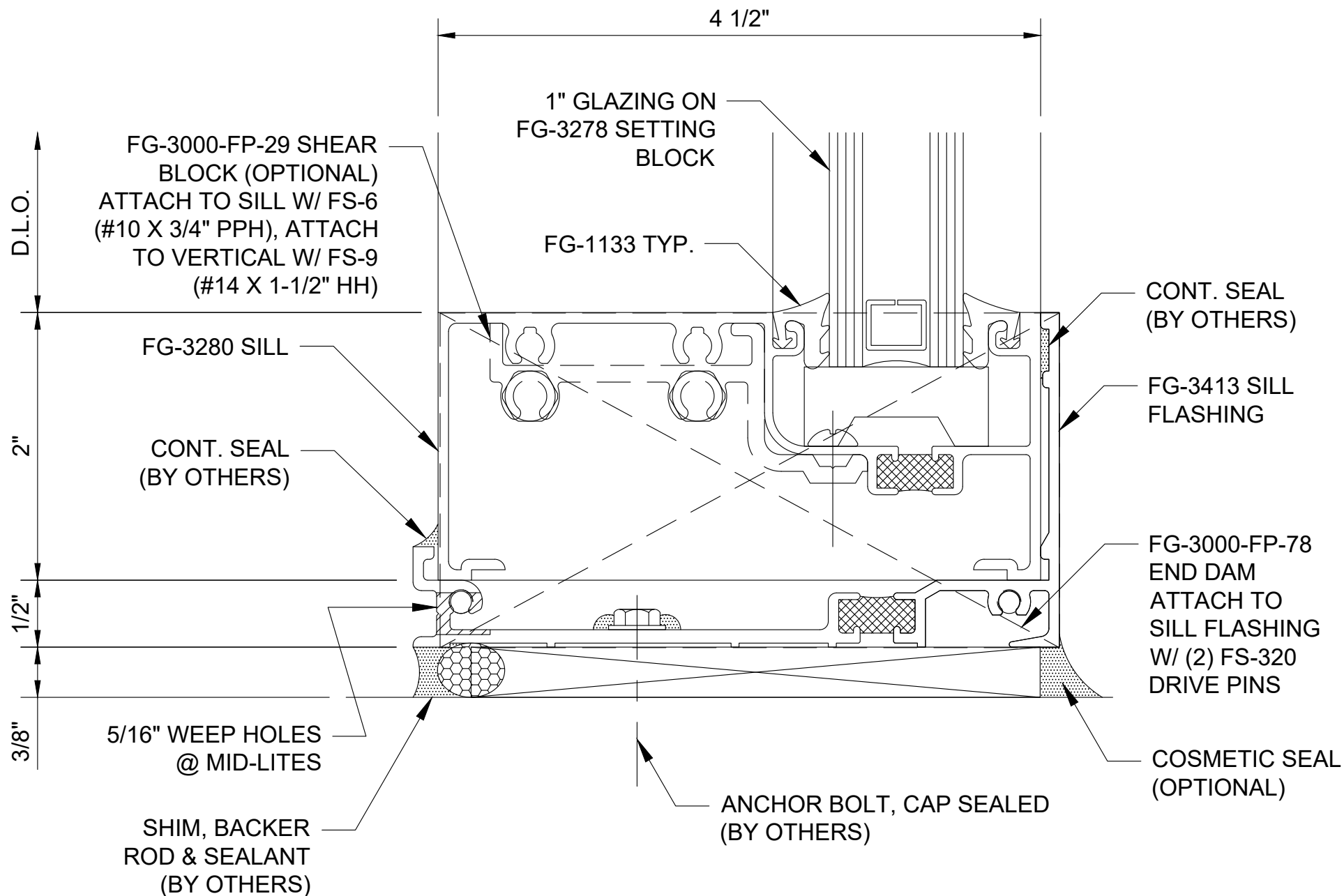
FG-3291 HEAD

FG-1133 TYP.

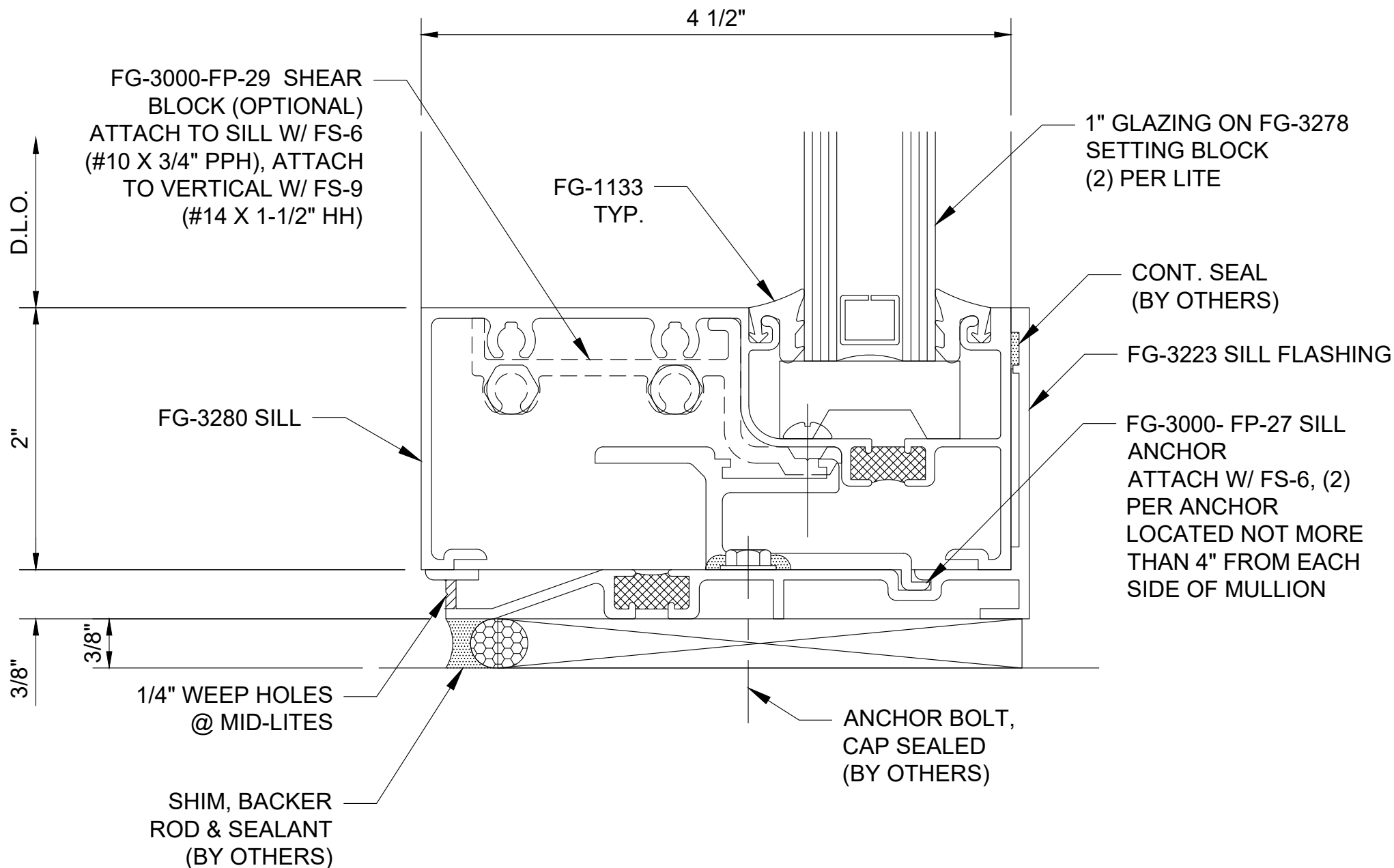
1" GLAZING

4 1/2"

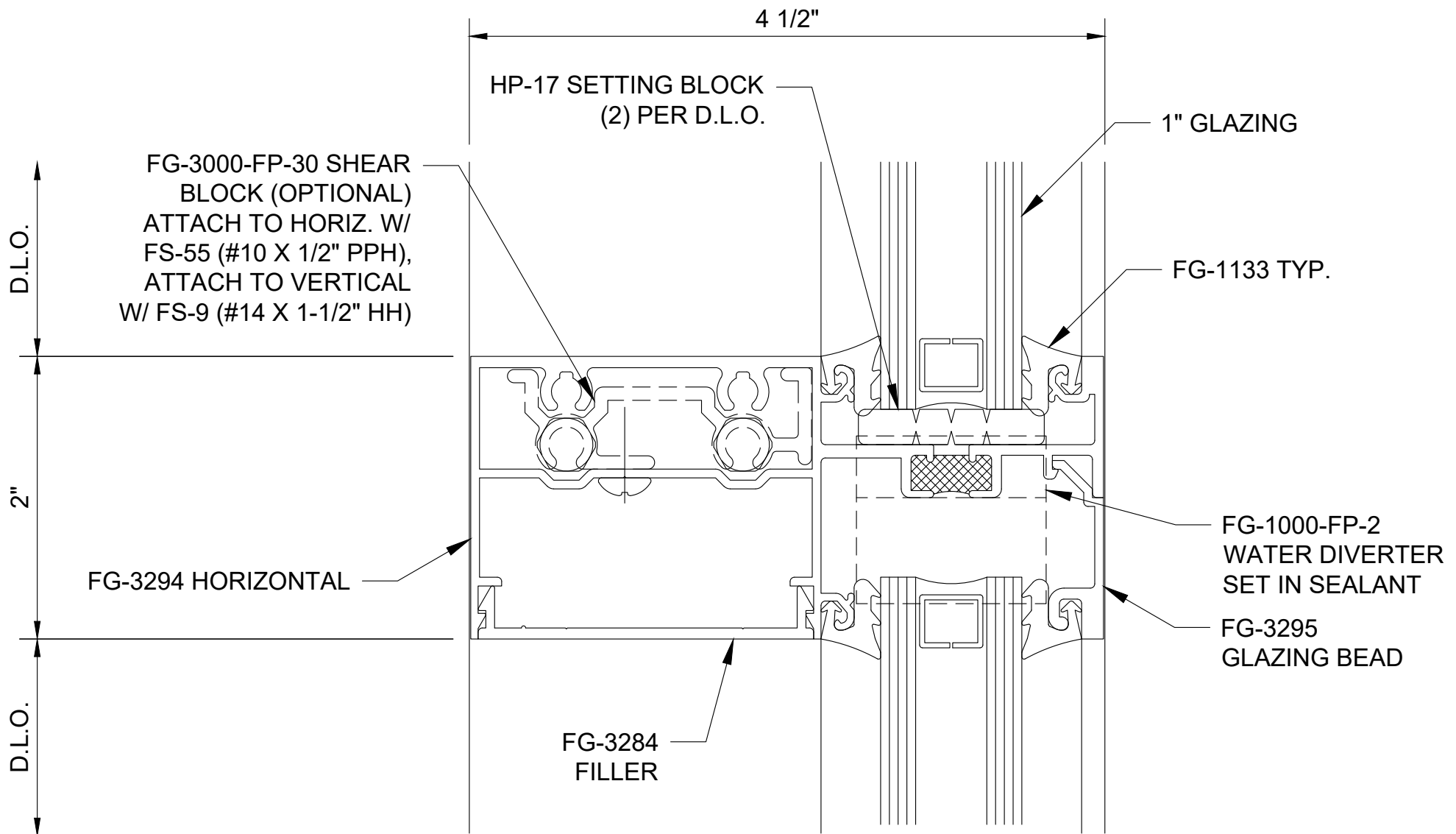
Series 3000 - Thermal MultiPlane - Back Set Head - H4502



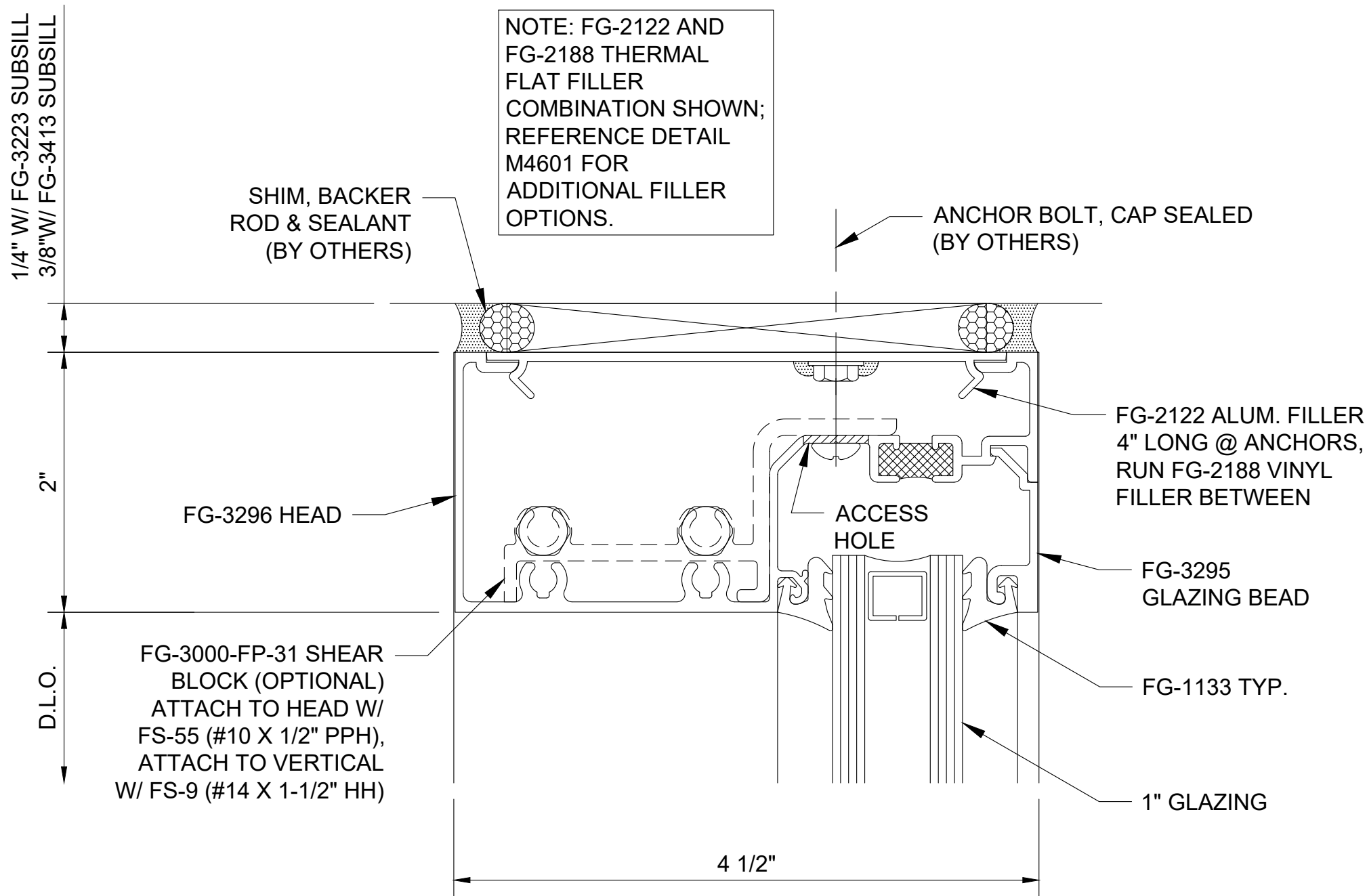
Series 3000 - Thermal MultiPlane - Back Set Sill - H4503



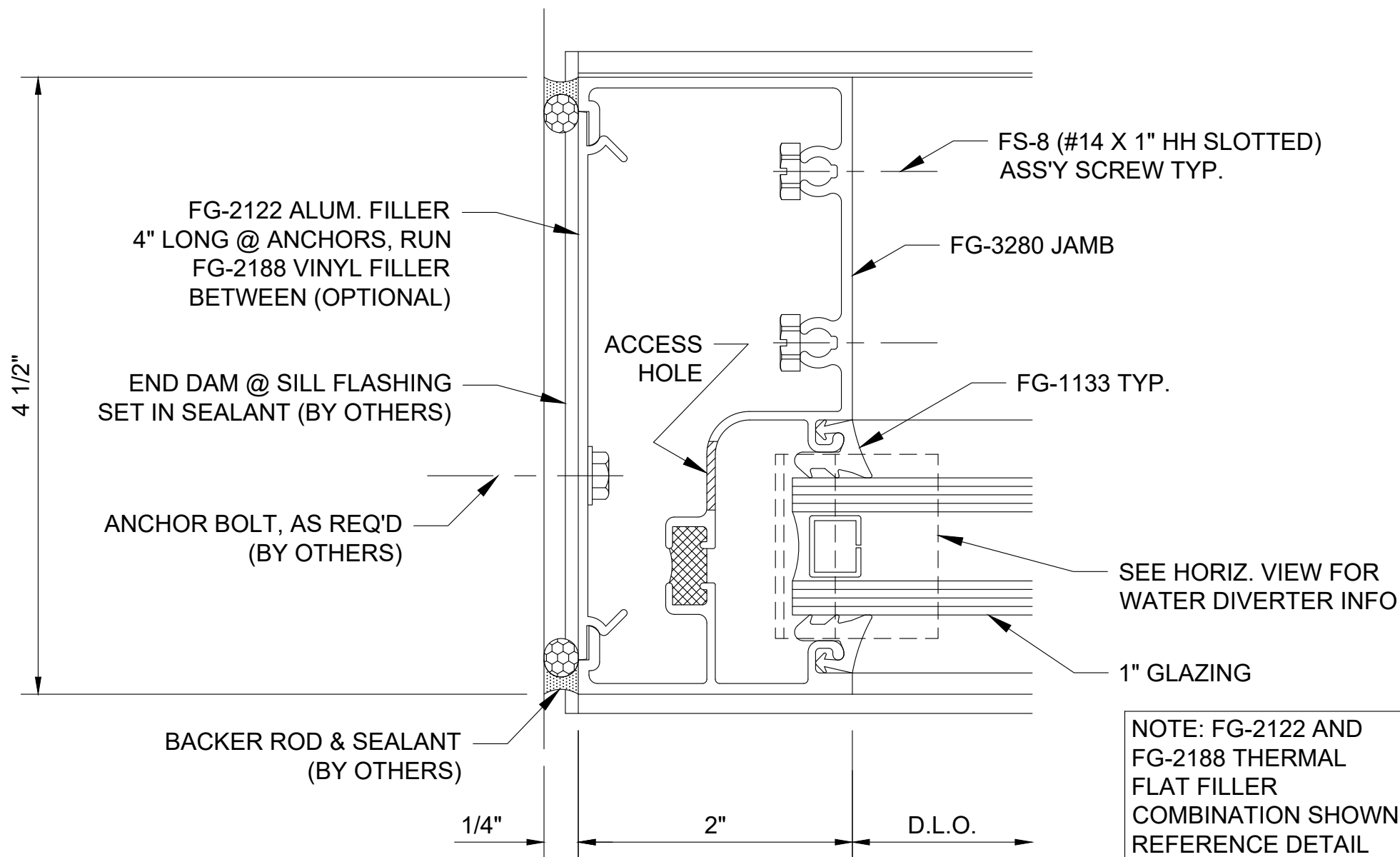
Series 3000 - Thermal MultiPlane - Back Set Sill Horizontal - H4509



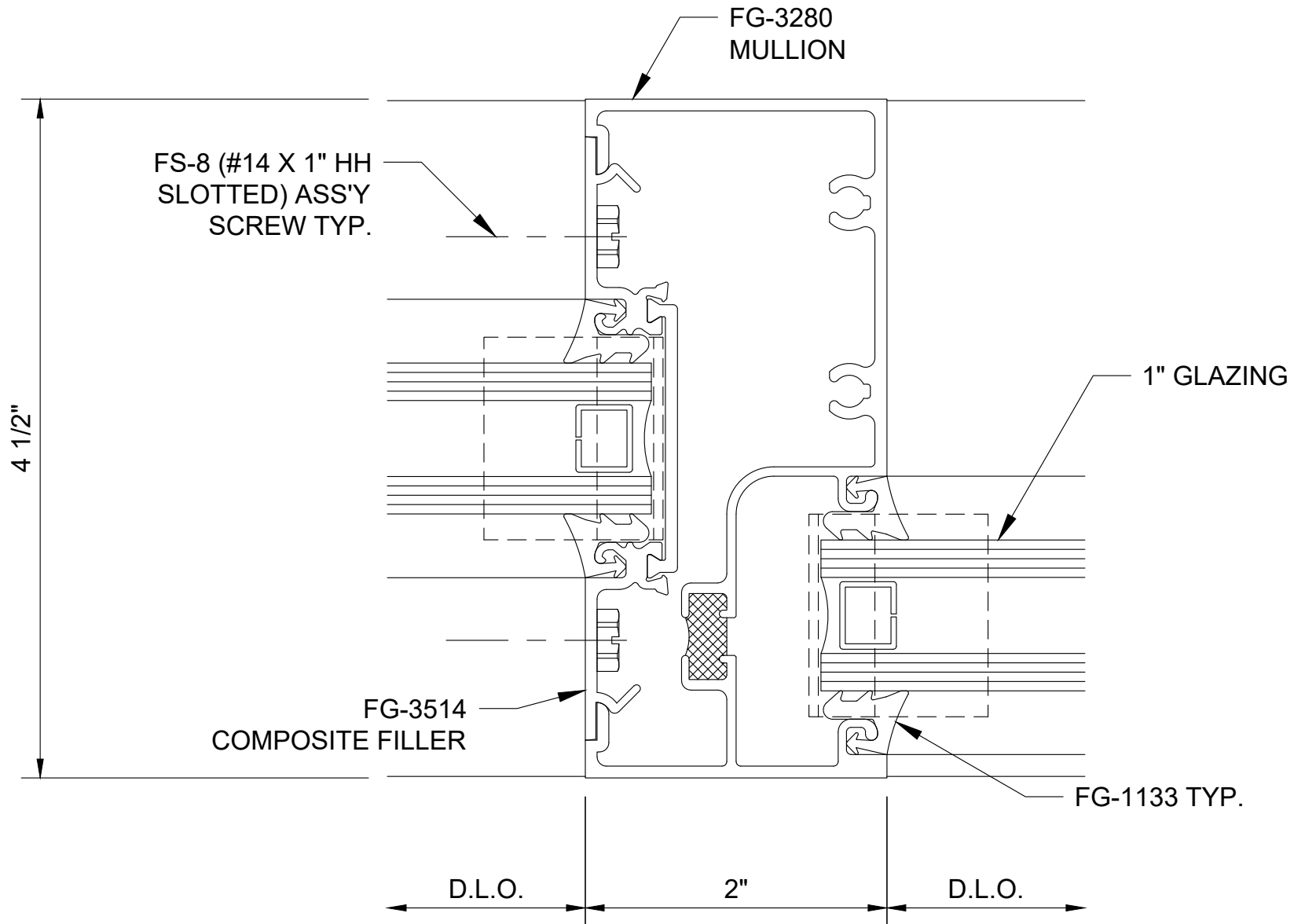
Series 3000 - Thermal MultiPlane - Back Set Intermediate Horizontal - H4514



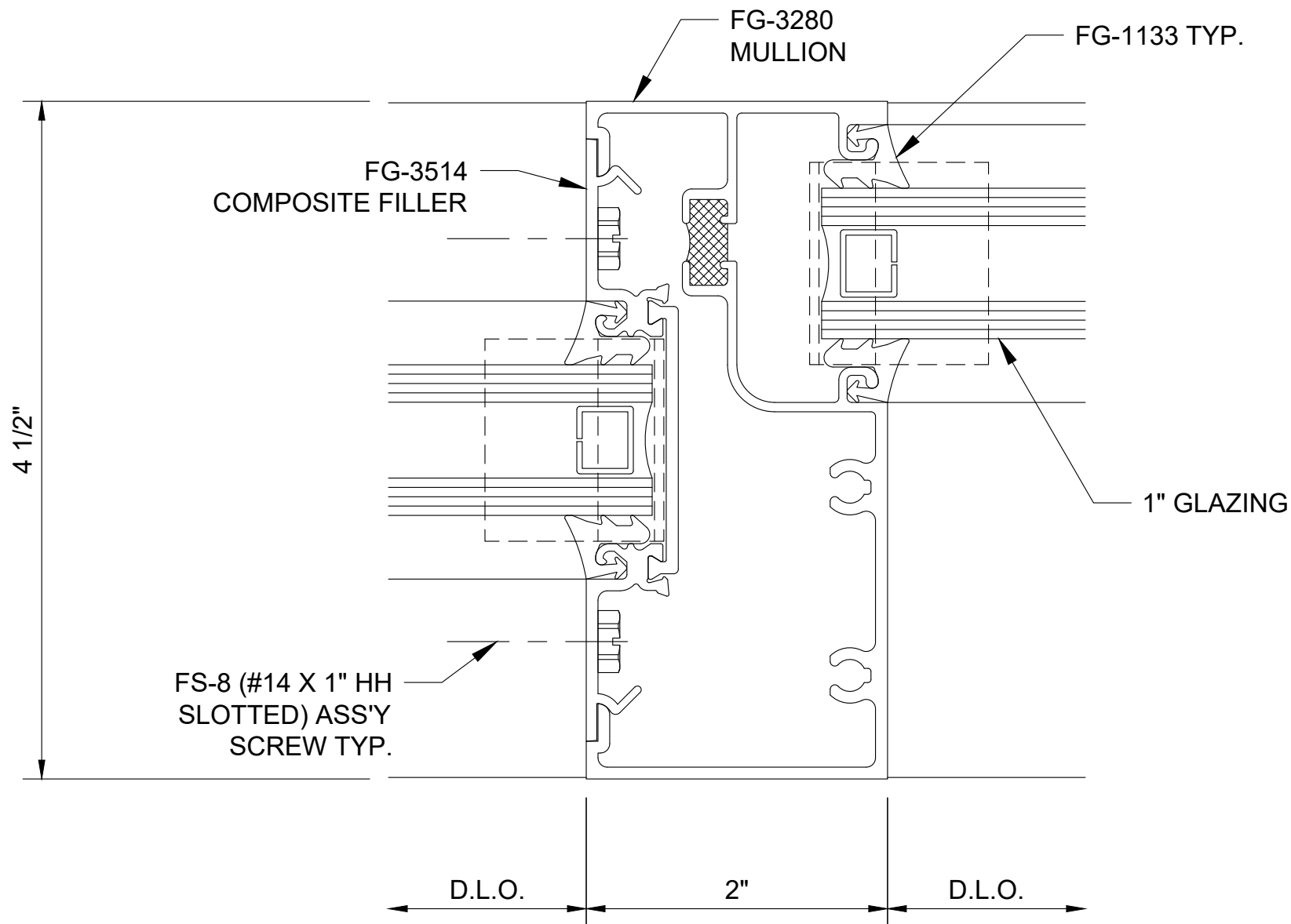
Series 3000 - Thermal MultiPlane - Back Set Head - H4515



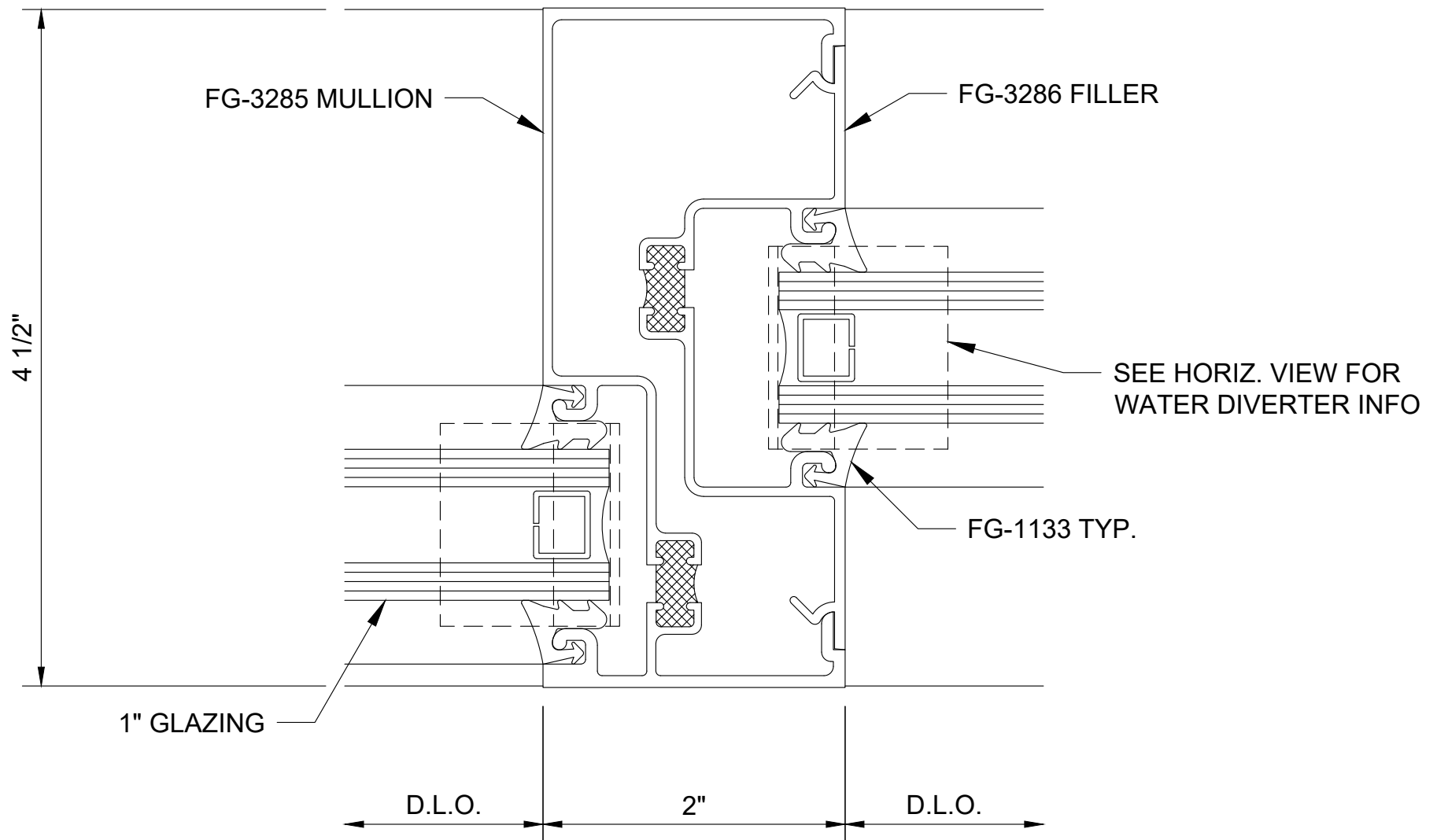
Series 3000 - Thermal MultiPlane - Front Set Jamb - V4102



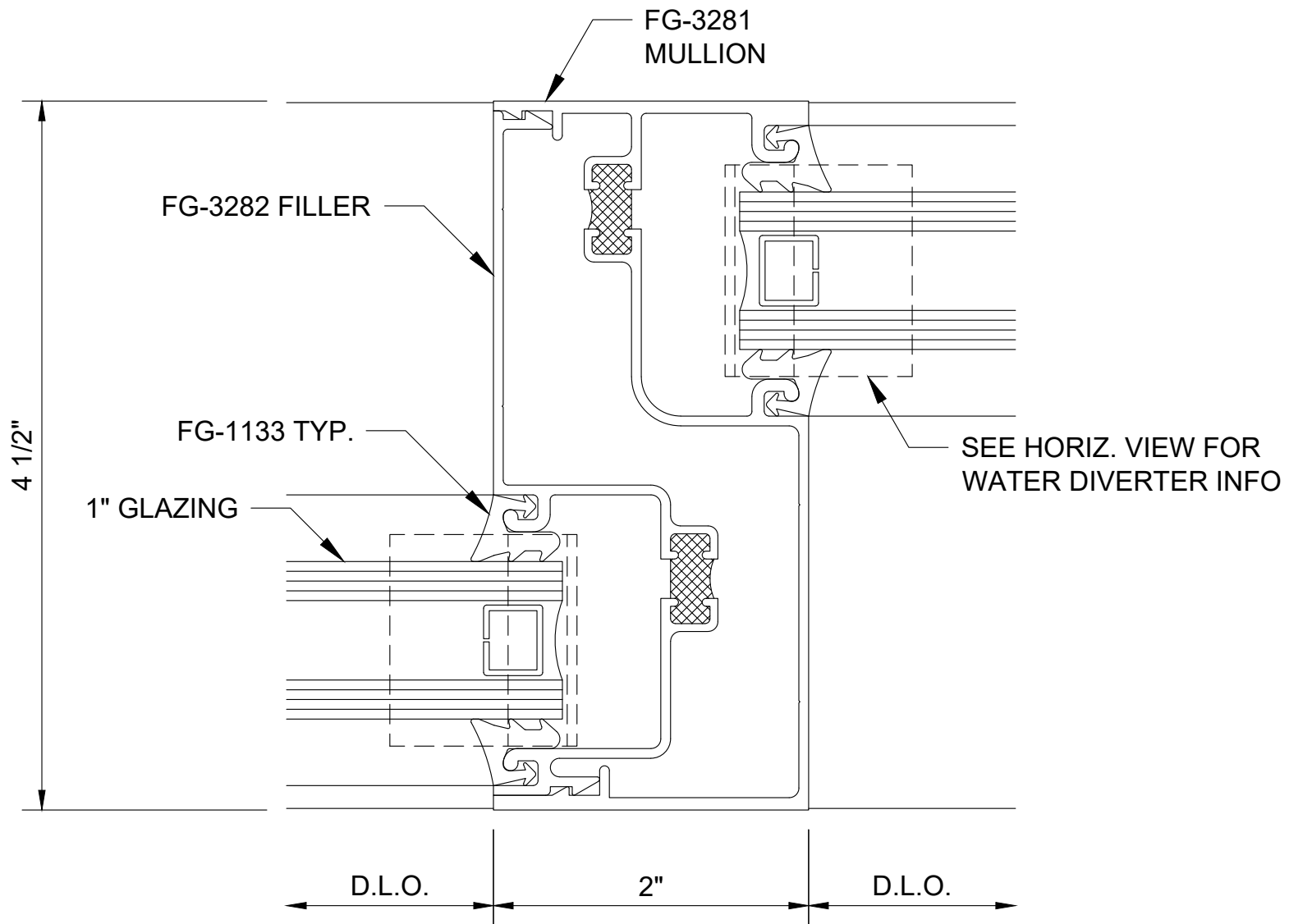
Series 3000 - Thermal MultiPlane - Multi-Set
Vertical - V4601



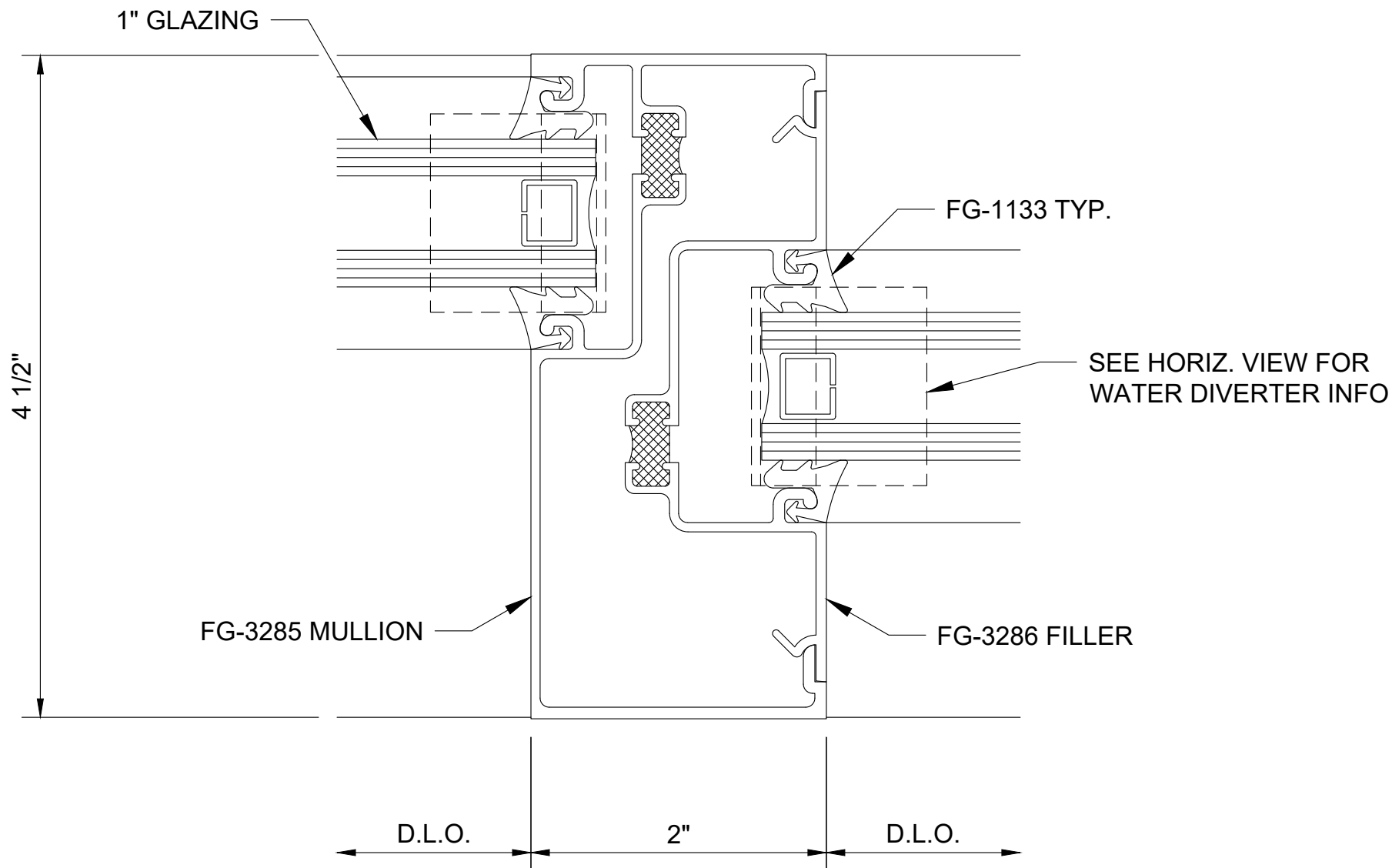
**Series 3000 - Thermal MultiPlane - Multi-Set
Vertical - V4602**



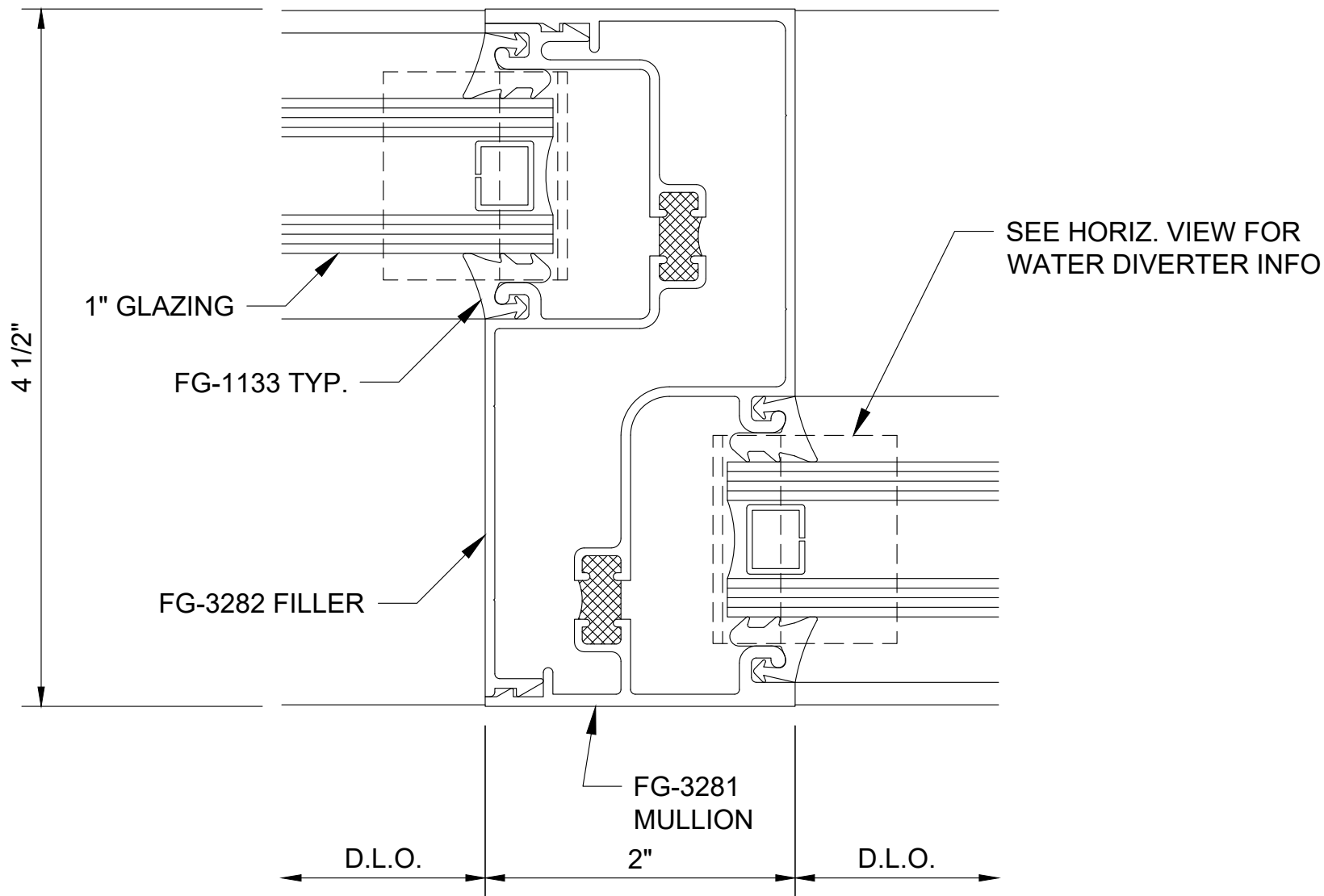
Series 3000 - Thermal MultiPlane - Multi-Set
Vertical - V4603



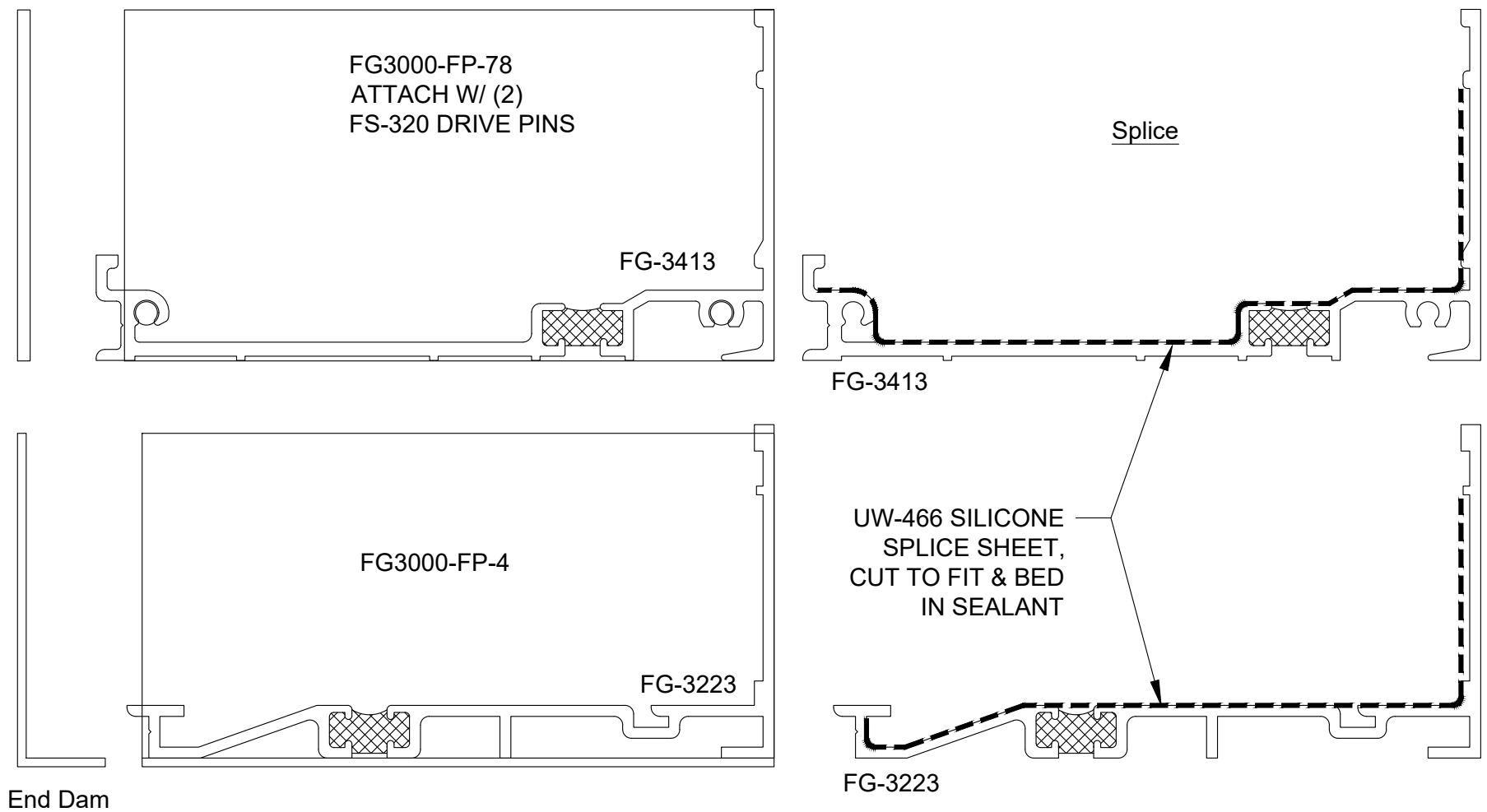
Series 3000 - Thermal MultiPlane - Multi-Set
Vertical - V4604



Series 3000 - Thermal MultiPlane - Multi-Set
Vertical - V4605

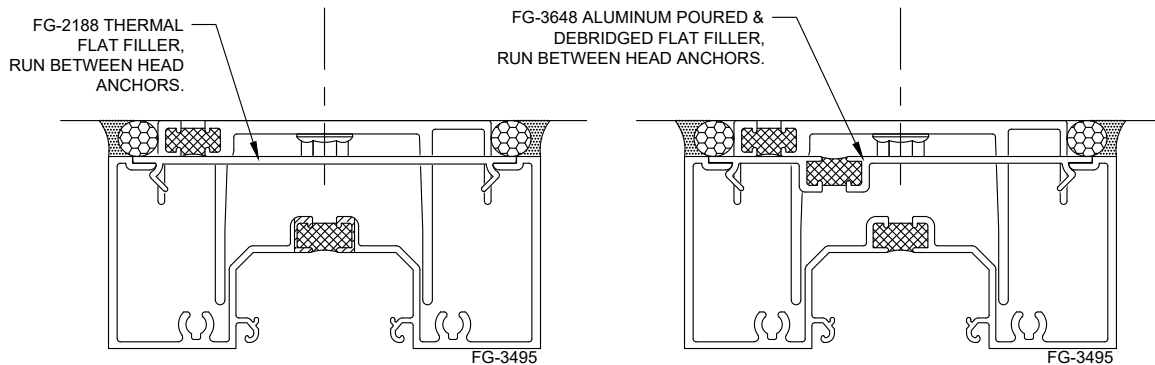


**Series 3000 - Thermal MultiPlane - Multi-Set
Vertical - V4606**

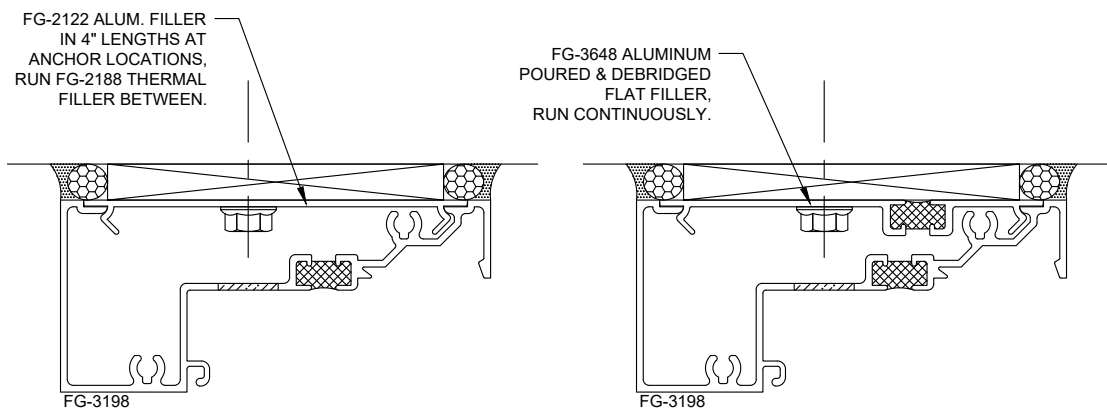


Note: Ref installation manual for additional splice & end dam info.

Series 3000 Thermal MultiPlane Subsill Splice & End Dam - M0950

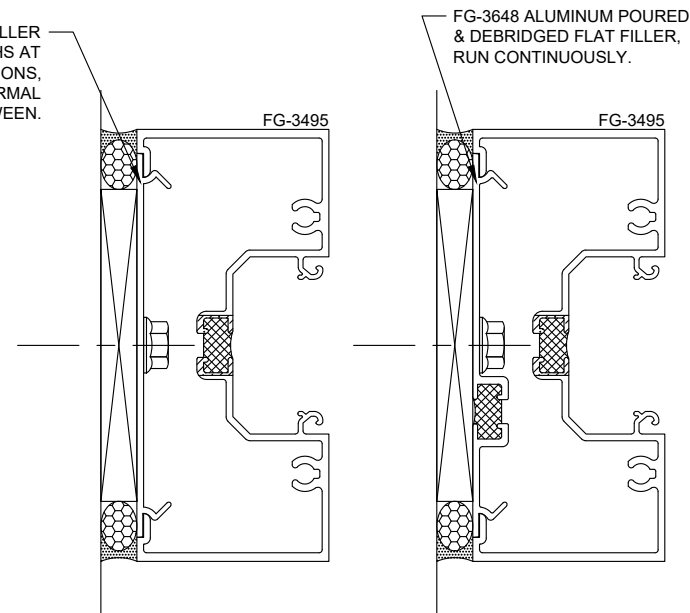


OUTSIDE GLAZED HEAD



INSIDE GLAZED HEAD

FG-2122 ALUM. FILLER IN 4" LENGTHS AT ANCHOR LOCATIONS, RUN FG-2188 THERMAL FILLER BETWEEN.



JAMB

NOTE THAT IF JAMB IS UNANCHORED, FG-2188 THERMAL FILLER MAY BE RUN CONTINUOUSLY.

CENTER SET DETAILS SHOWN ON THIS SHEET; FRONT, BACK AND MULTI-SET ARE SIMILAR. THE FG-3648 FILLER MAY NEED TO BE REVERSED IN SOME APPLICATIONS TO PROVIDE A SUITABLE SURFACE FOR ANCHOR BOLT ATTACHMENT FREE OF INTERFERENCE WITH POUR POCKET (AS REQUIRED).

Series 3000 Thermal MutliPlane - Multi-Set Perimeter Filler Options - M4601