

Oldcastle BuildingEnvelope®

1-866-Oldcastle (653-2278) - www.obe.com

SERIES 3000 THERMAL MULTIPLANE STOREFRONT 2" X 4-1/2" w/ 1" TYP. INFILL / FRONT SET

(Drawing numbers---i.e., H4101---used as CAD detail reference only)

Elevation

Horizontal Details

H4101	Intermediate Horizontal - Outside Glazed
H4102	Head - Outside Glazed
H4103	Sill - Outside Glazed Option 1
H4109	Sill - Outside Glazed Option 2
H4112	Head w/ Receptor
H4114	Intermediate Horizontal - Inside Glazed
H4115	Head - Inside Glazed
H4119	Horizontal at Operable Window
H4143	High Sidelite Base Sill

Vertical Details

V4102	Jamb
V4105	Heavy Vertical
V4106	Typical Vertical
V4107	Expansion Vertical

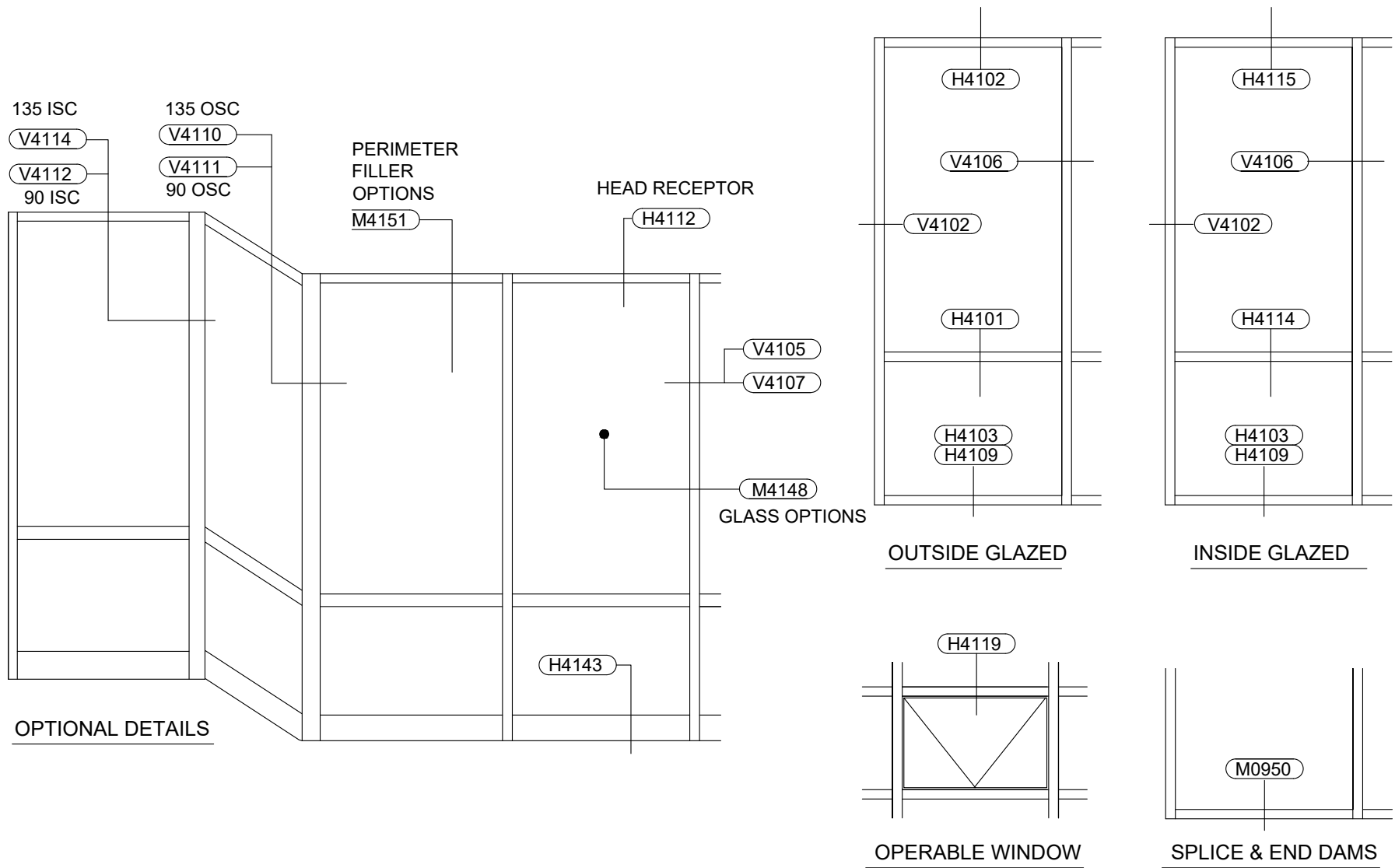
Corner Details

V4110	135° Outside Corner
V4111	90° Outside Corner
V4112	90° Inside Corner
V4114	135° Inside Corner

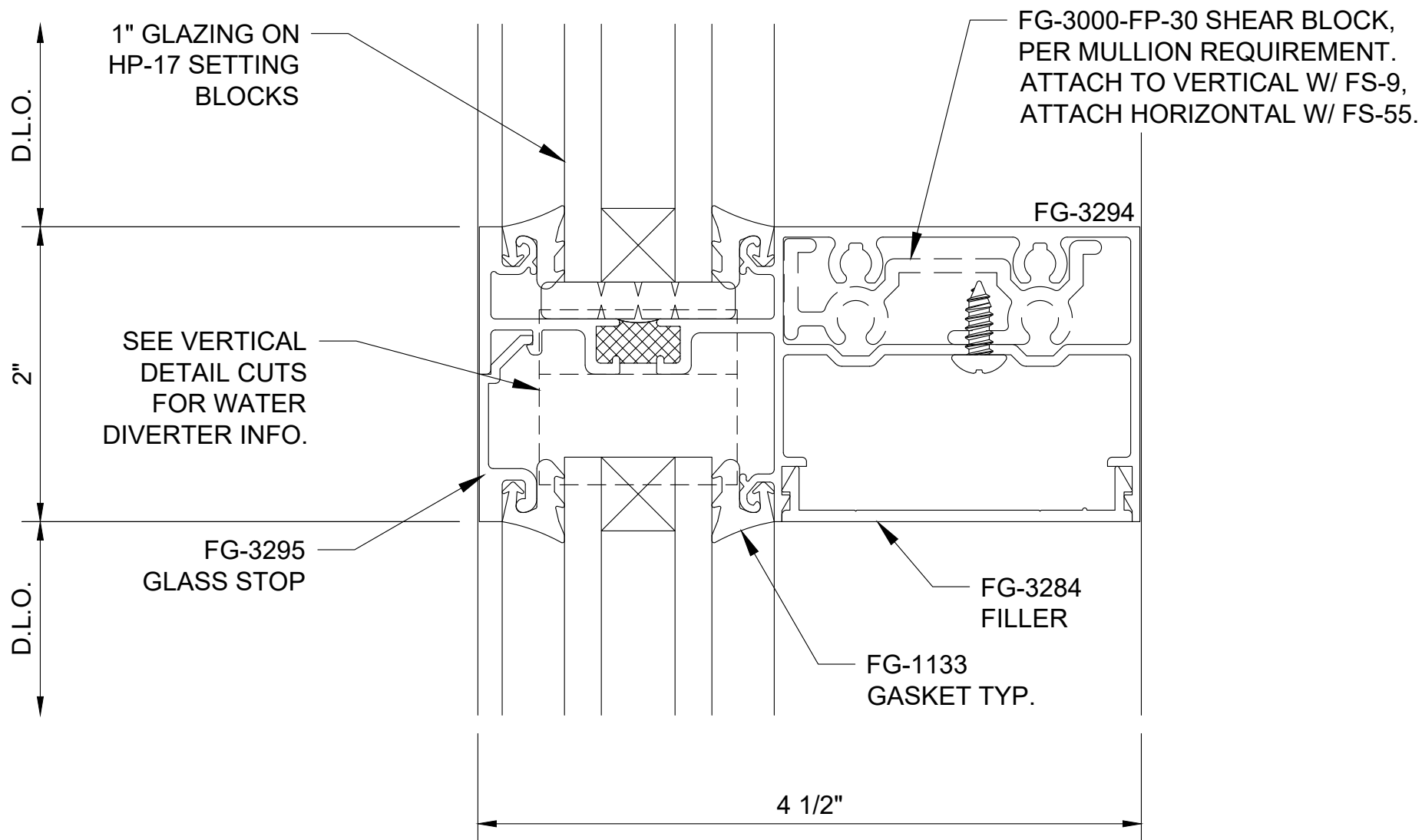
Misc. Details

M0950	SubSill Splicing and End Dam
M4148	Glass Options
M4151	Perimeter Filler Options

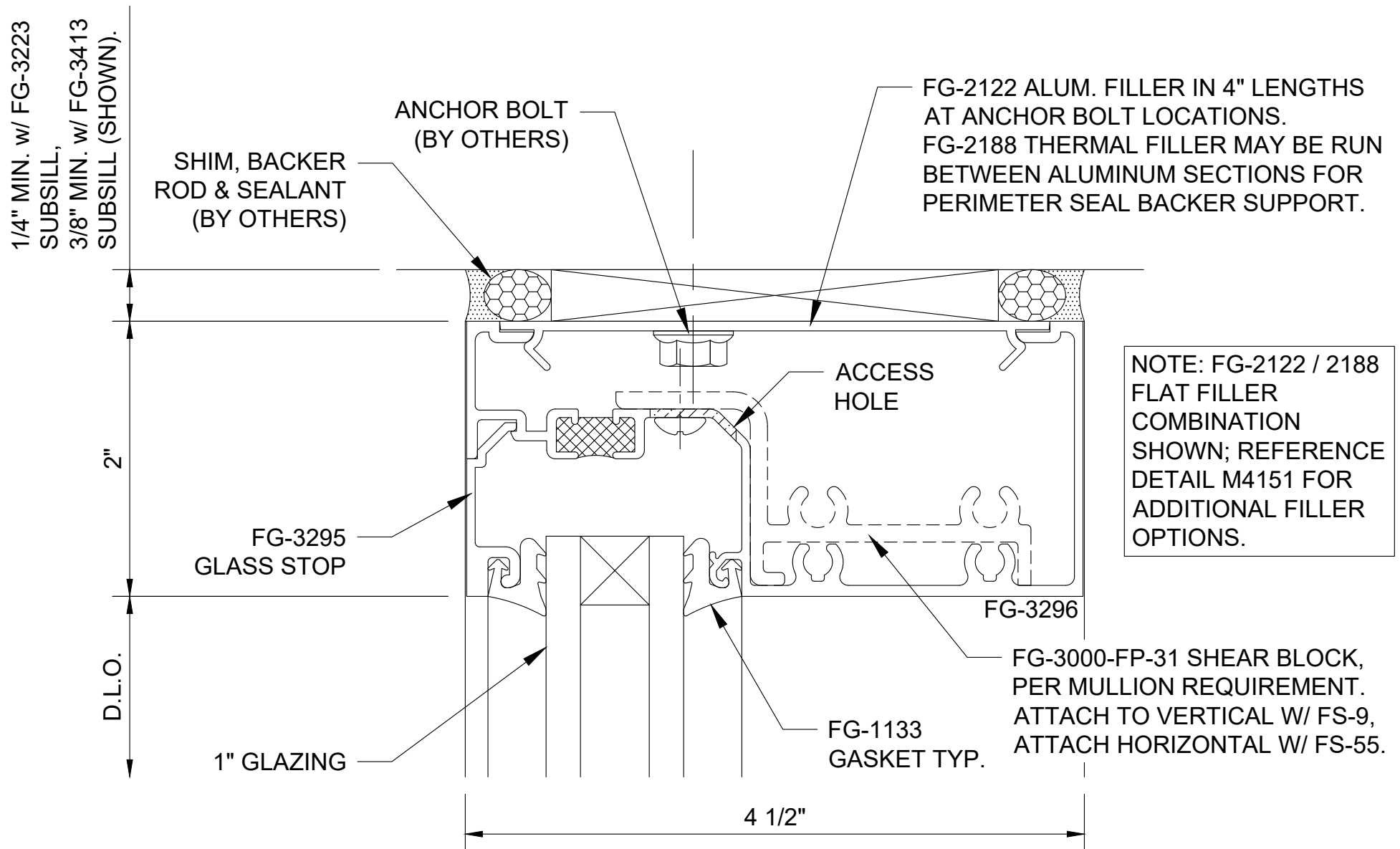
Table of Contents



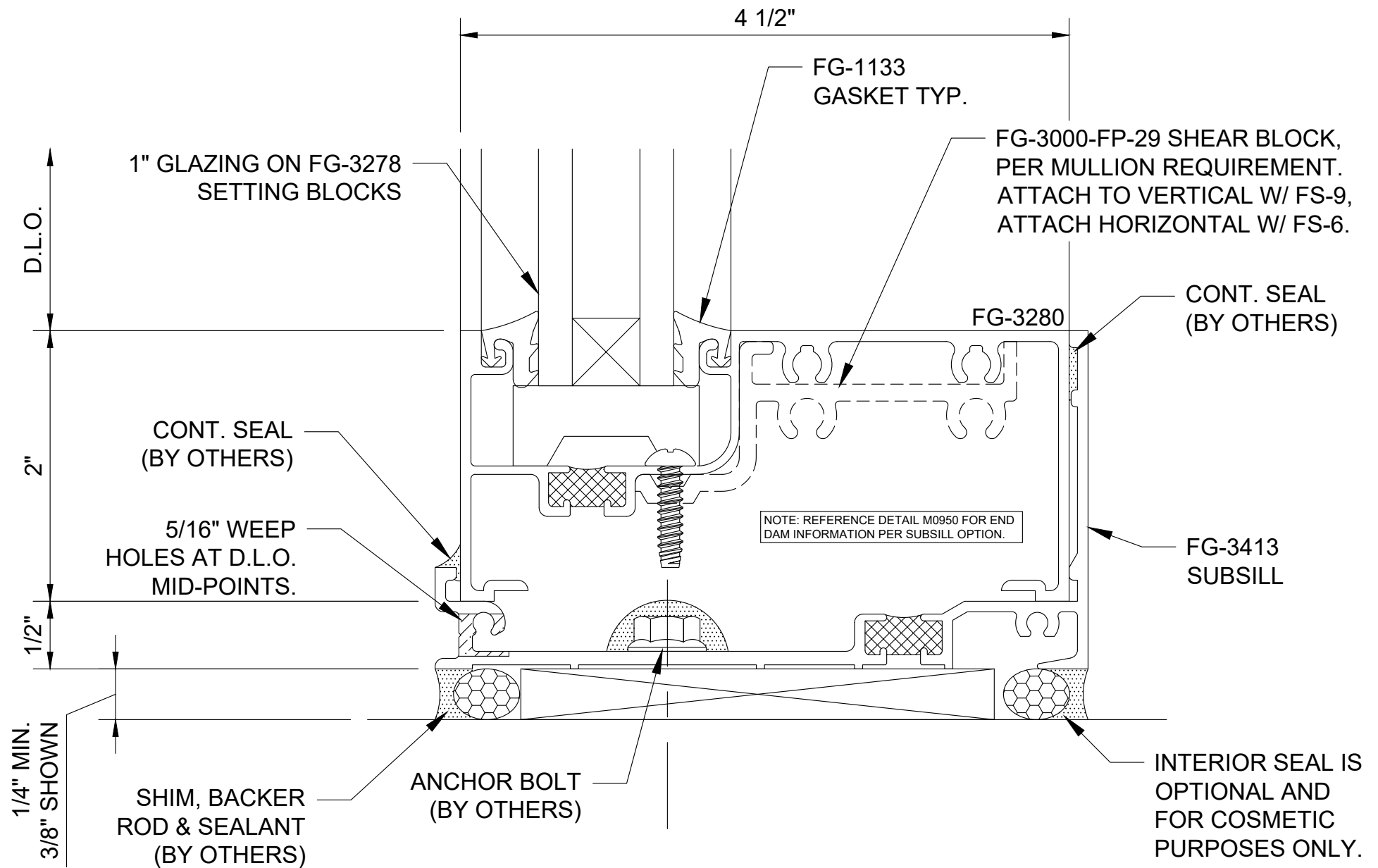
Series 3000 Thermal MultiPlane Storefront - Front Set 2" x 4-1/2" Thermally Broken Storefront for 1" Typ. Infill - Elevation



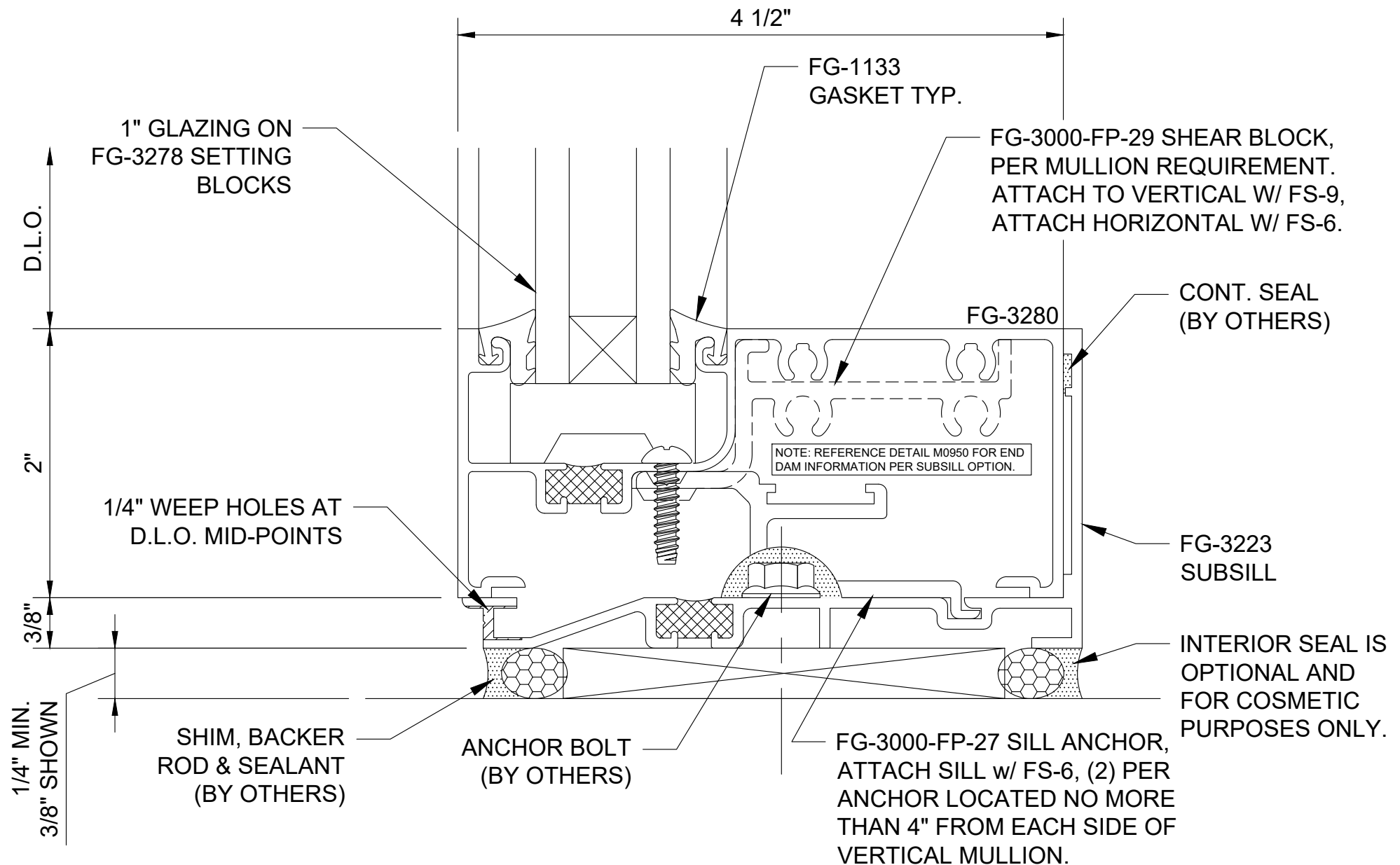
Series 3000 Thermal MultiPlane - Front Set Intermediate Horizontal - Outside Glazed - H4101



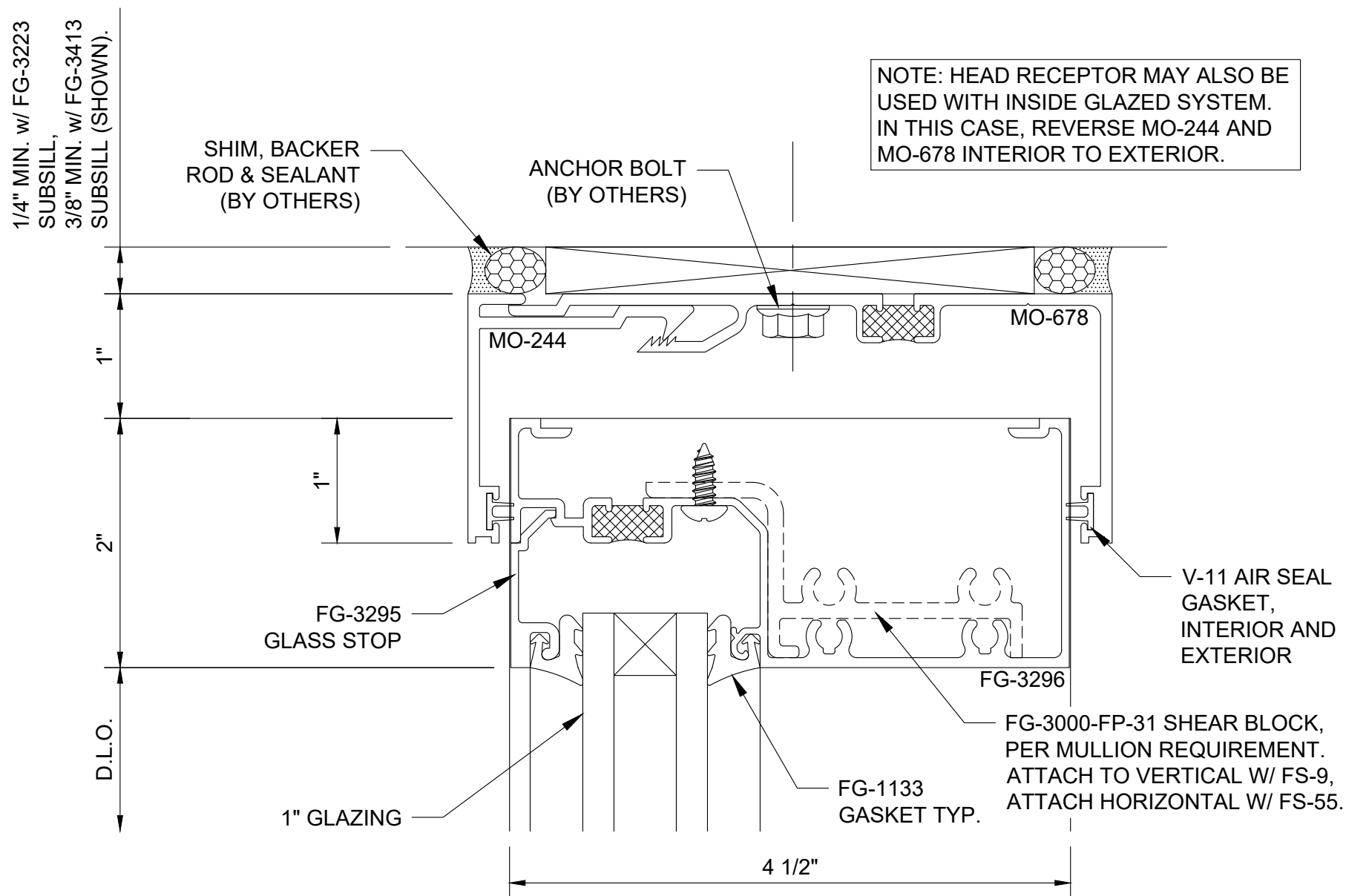
Series 3000 Thermal MultiPlane - Front Set Head - Outside Glazed - H4102



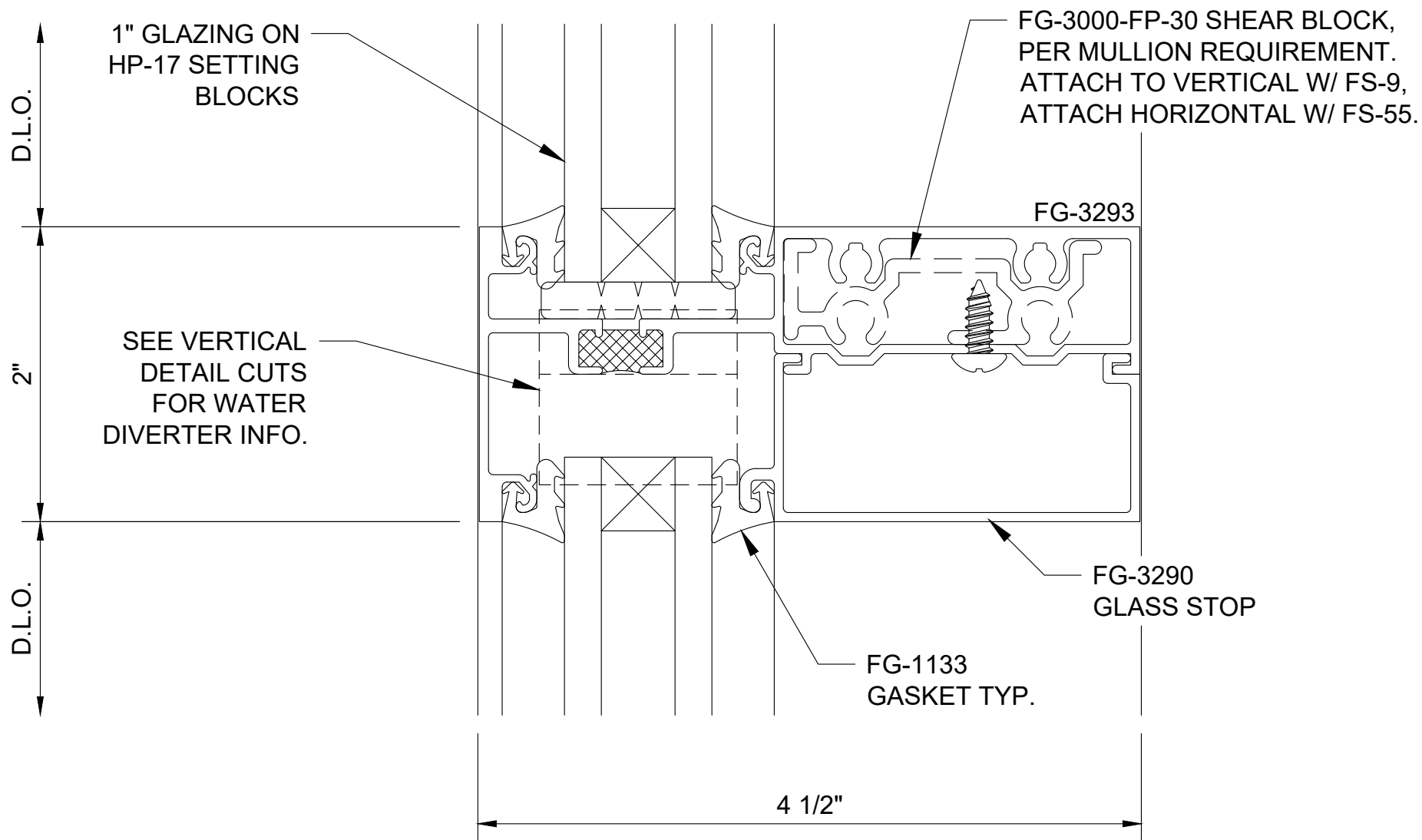
Series 3000 Thermal MultiPlane - Front Set Sill - H4102



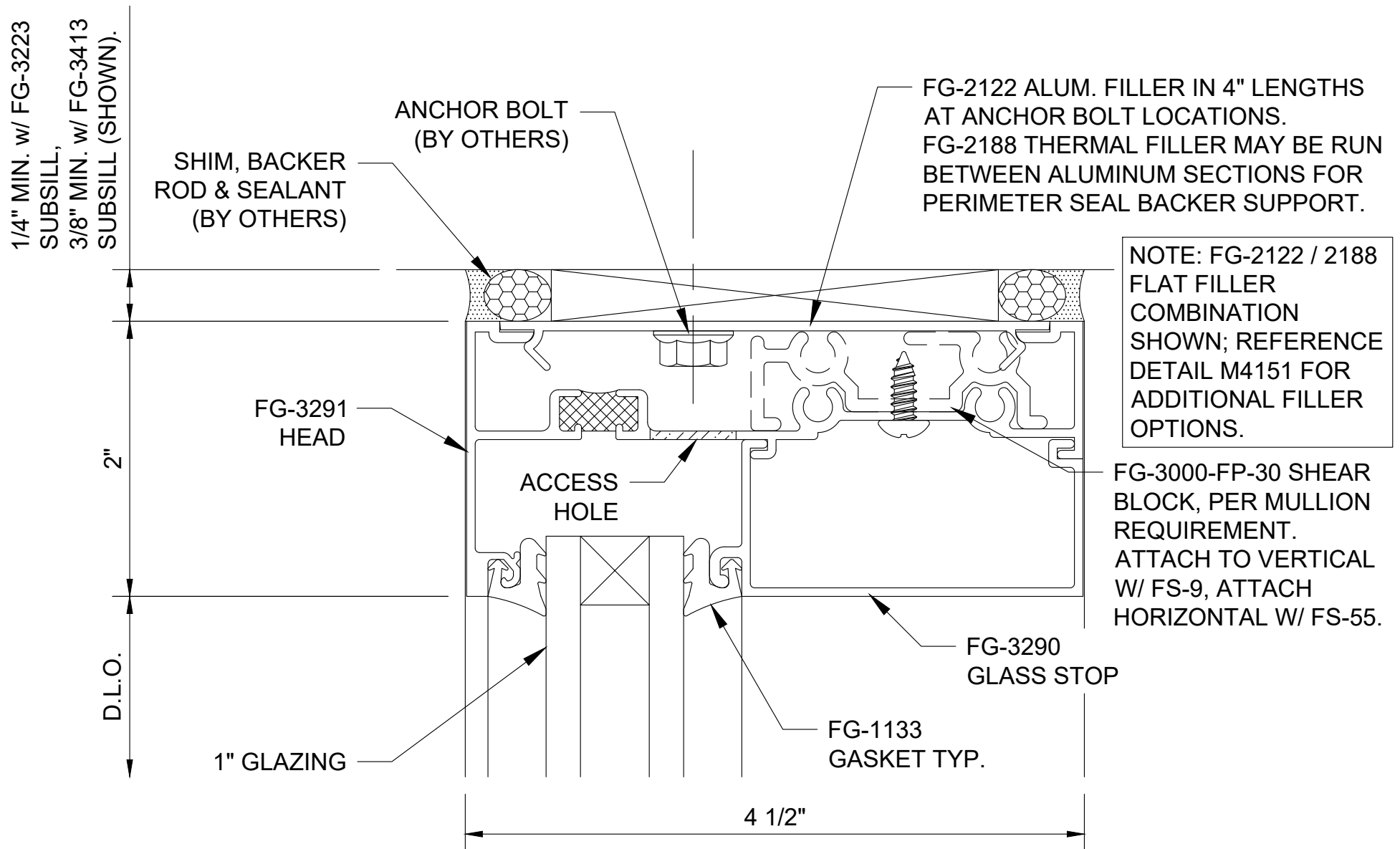
Series 3000 Thermal MultiPlane - Front Set Sill Option - H4109



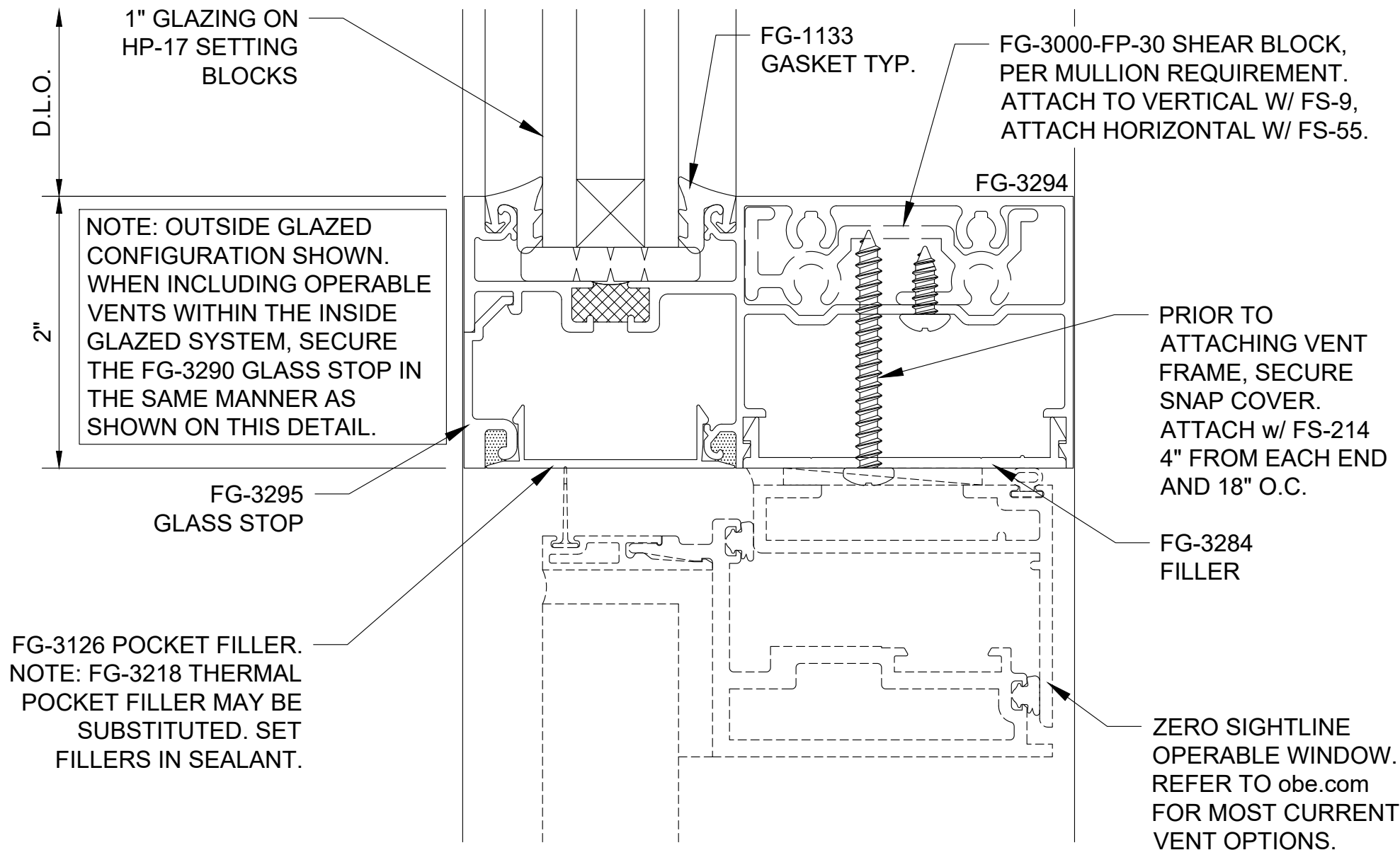
Series 3000 Thermal MultiPlane - Front Set Head w/ Receptor - H4112



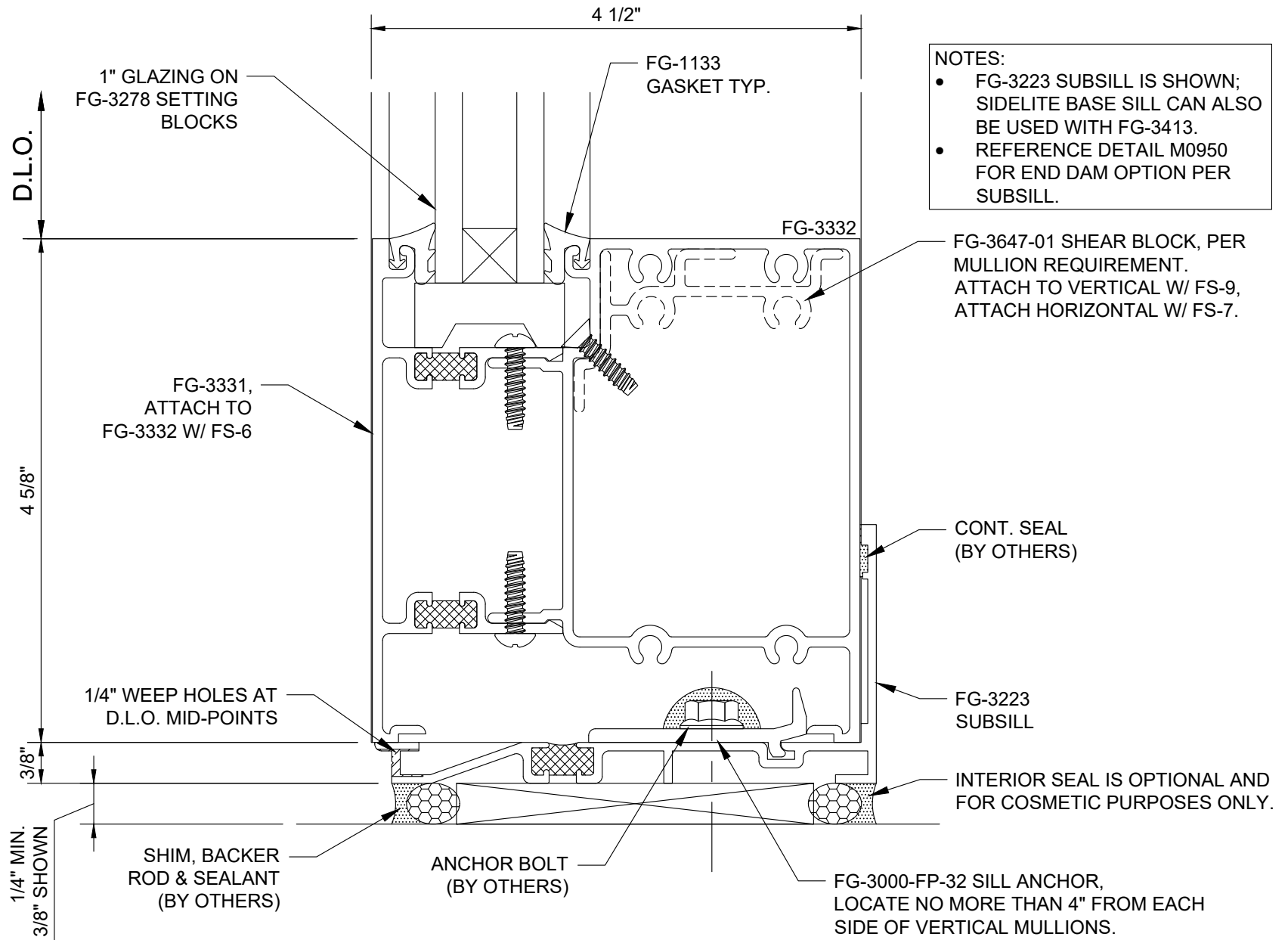
Series 3000 Thermal MultiPlane - Front Set
Intermediate Horizontal - Inside Glazed - H4114



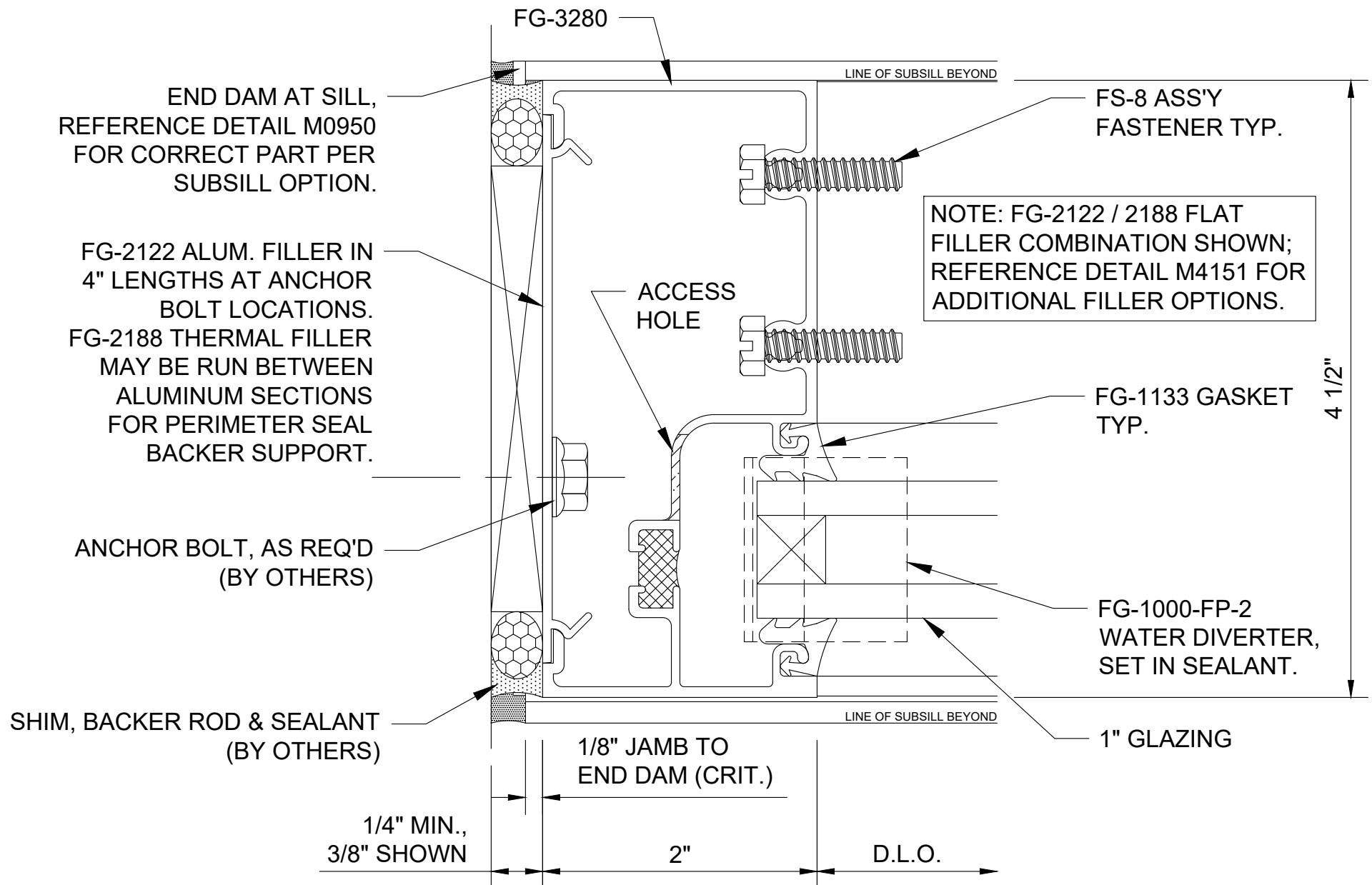
Series 3000 Thermal MultiPlane - Front Set Head - Inside Glazed - H4115



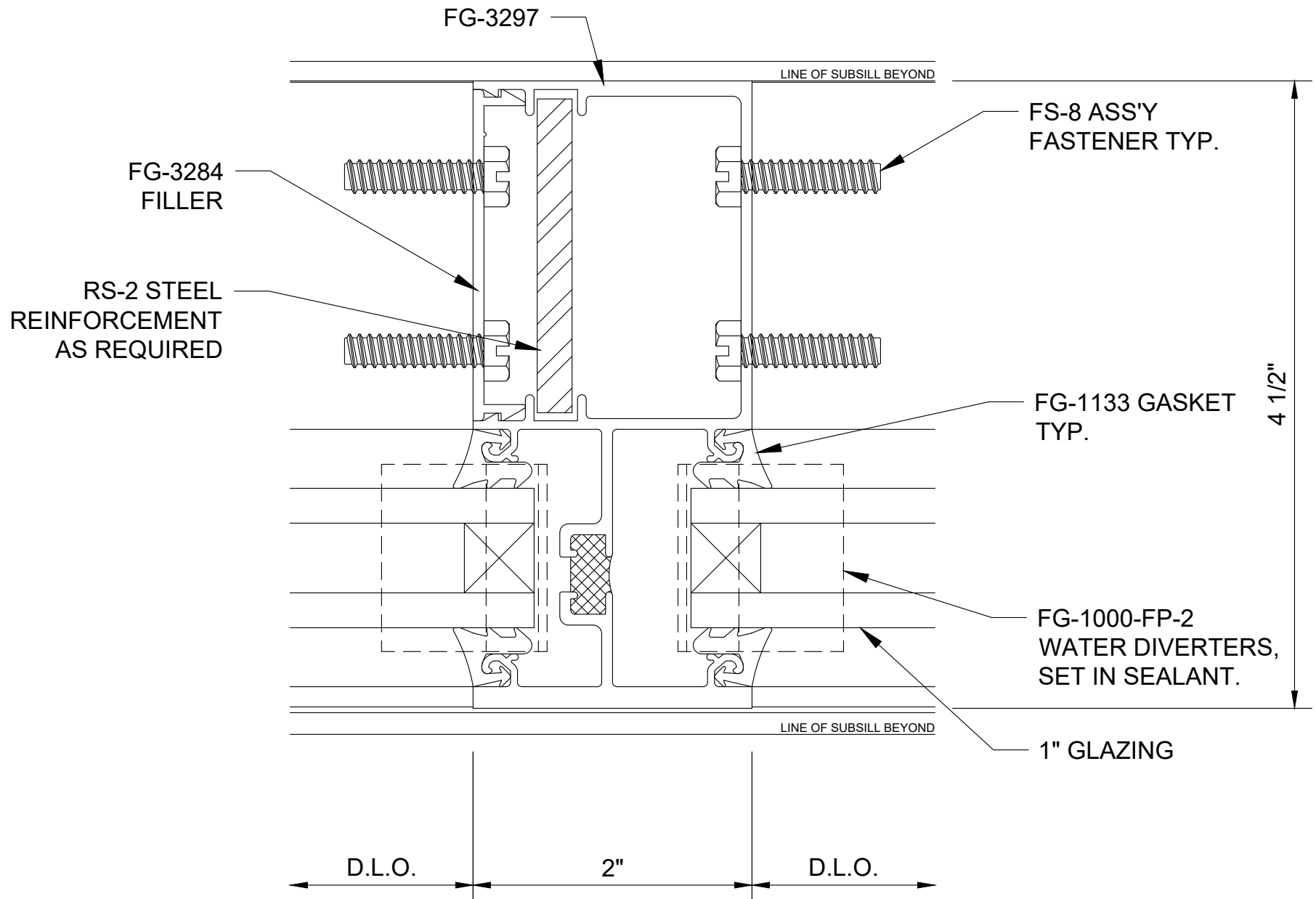
Series 3000 Thermal MultiPlane - Front Set Horizontal at Operable Window - H4119



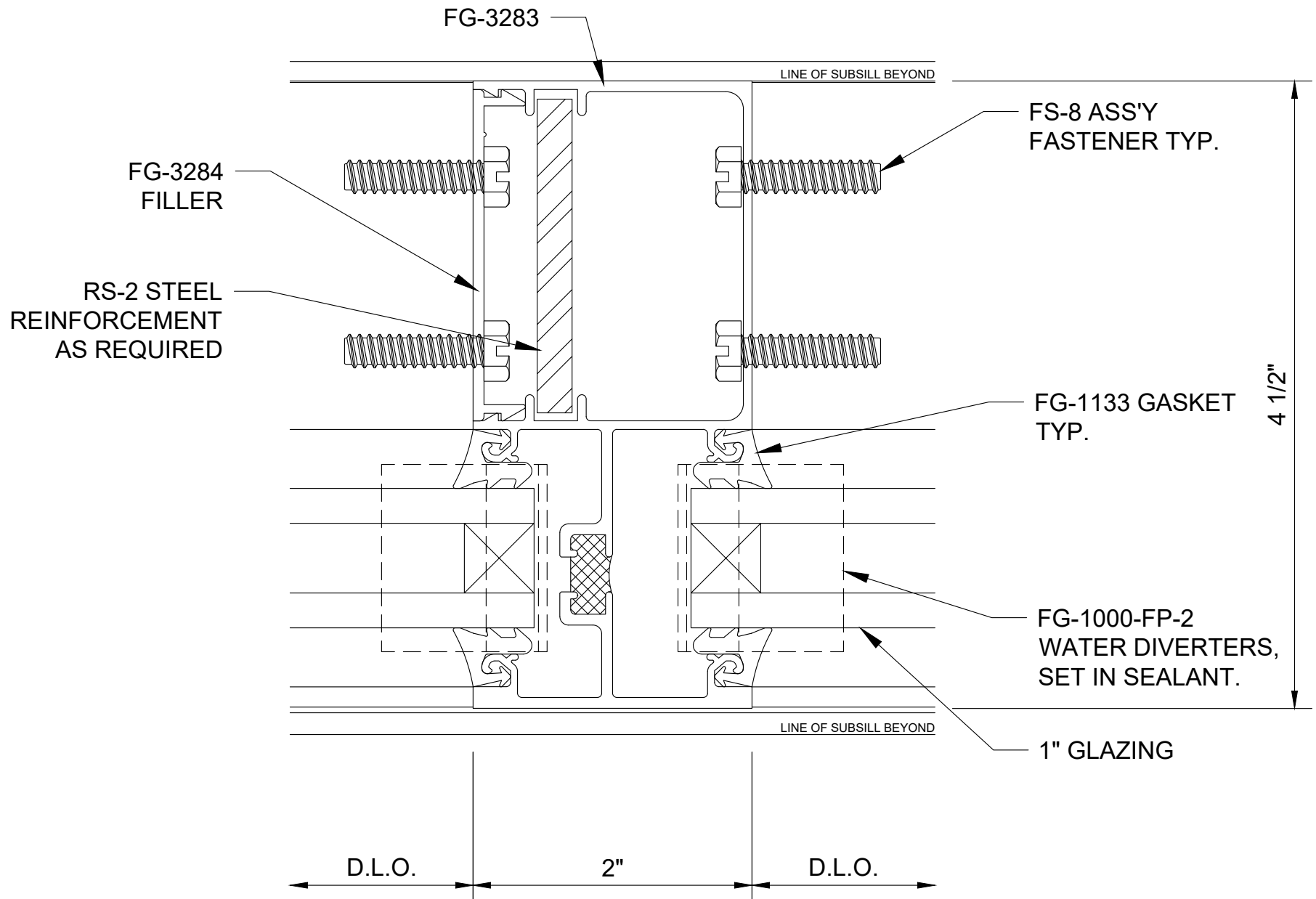
Series 3000 Thermal MultiPlane - Front Set Sidelite Base Sill - H4143



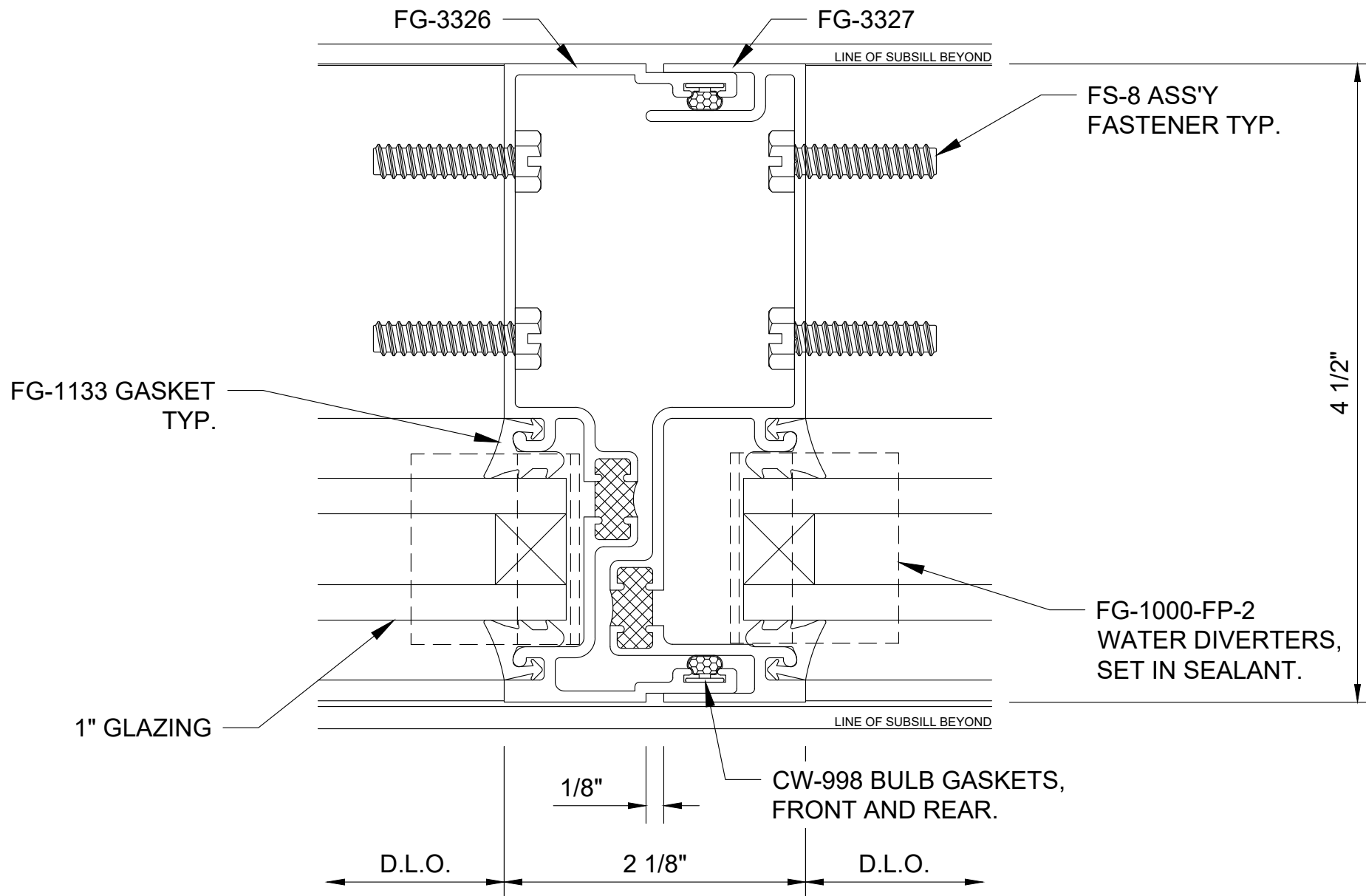
Series 3000 Thermal MultiPlane - Front Set Jamb - V4102



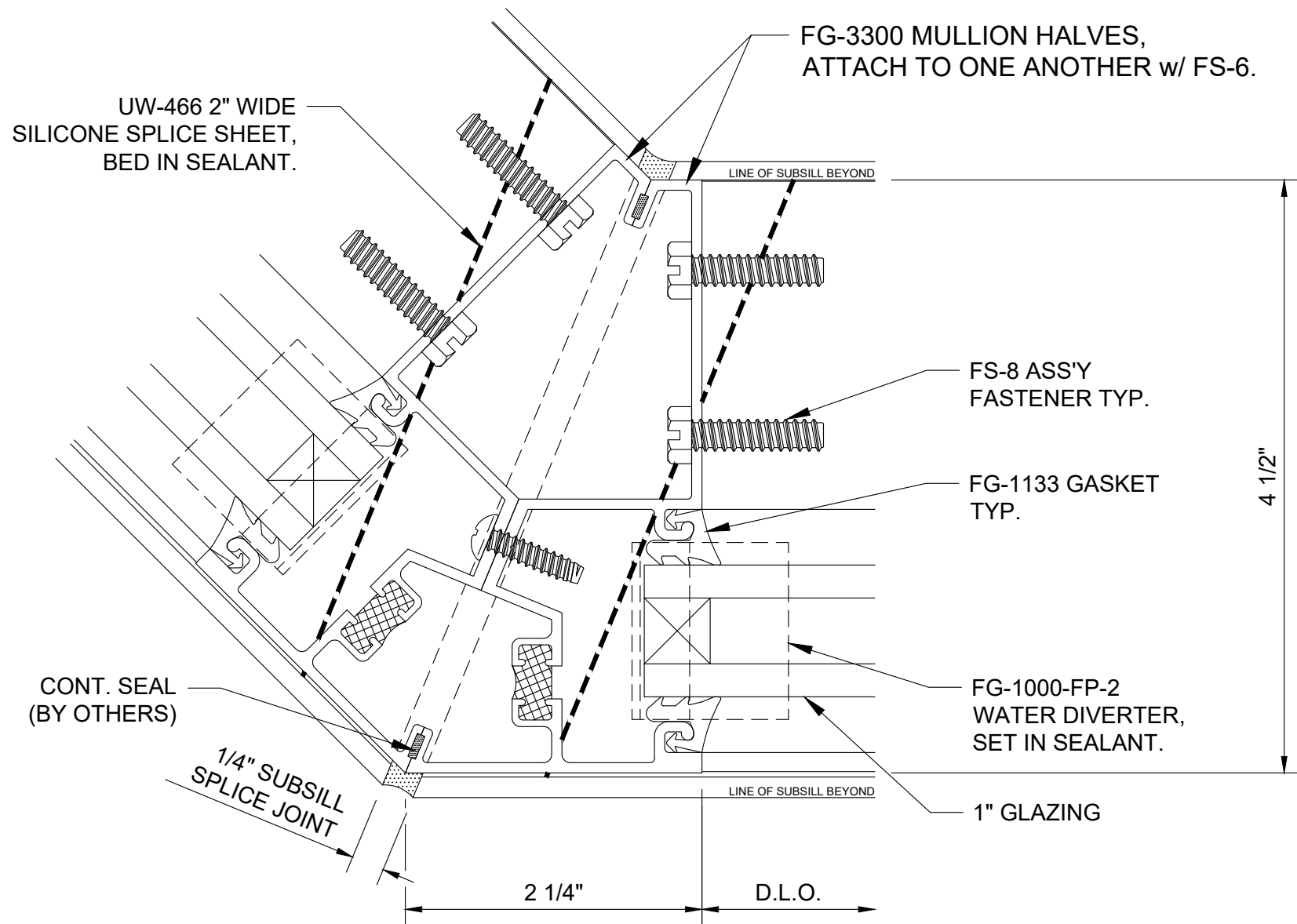
Series 3000 Thermal MultiPlane - Front Set Heavy Vertical - V4105



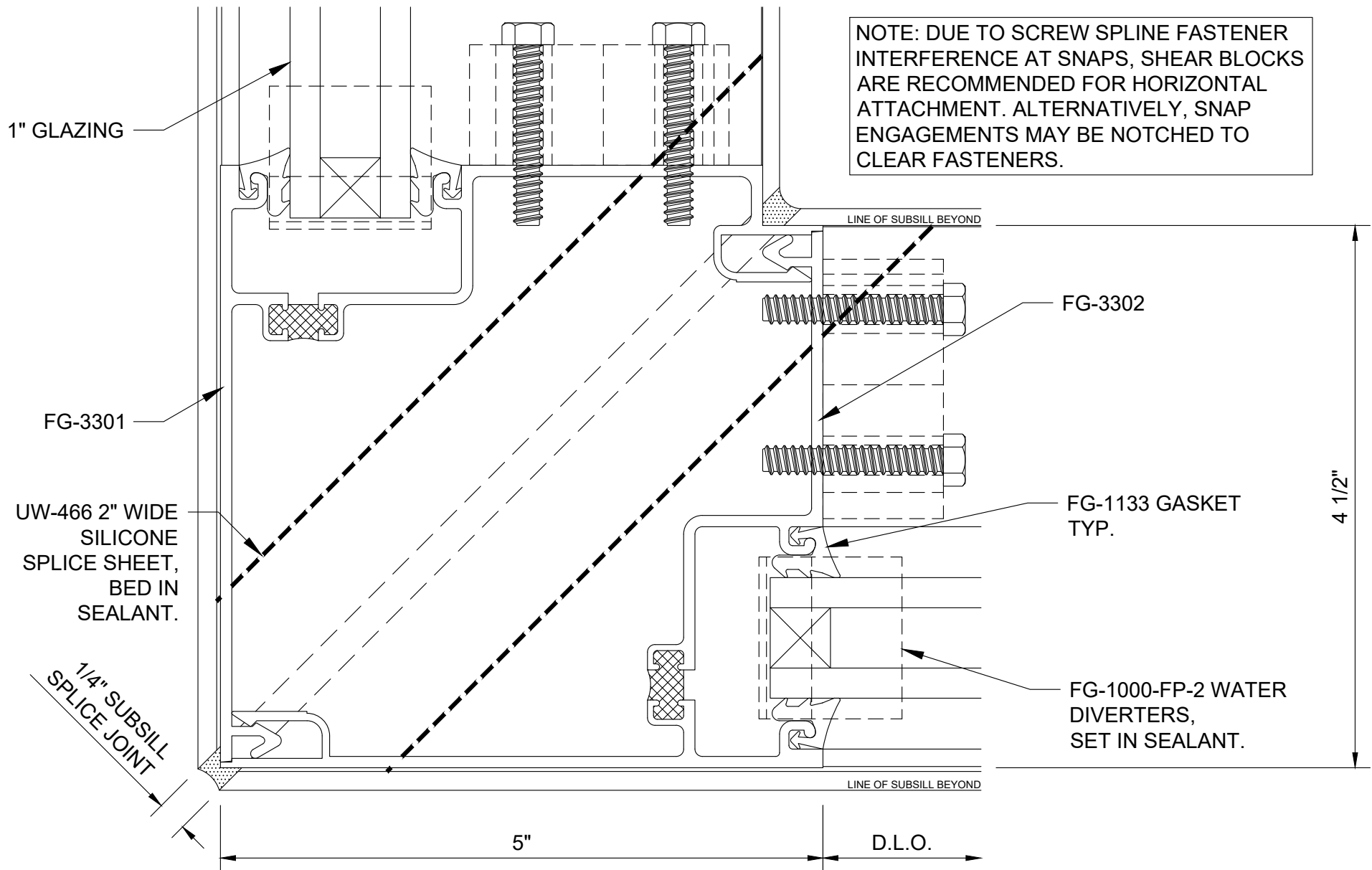
Series 3000 Thermal MultiPlane - Front Set
Typical Vertical - V4106



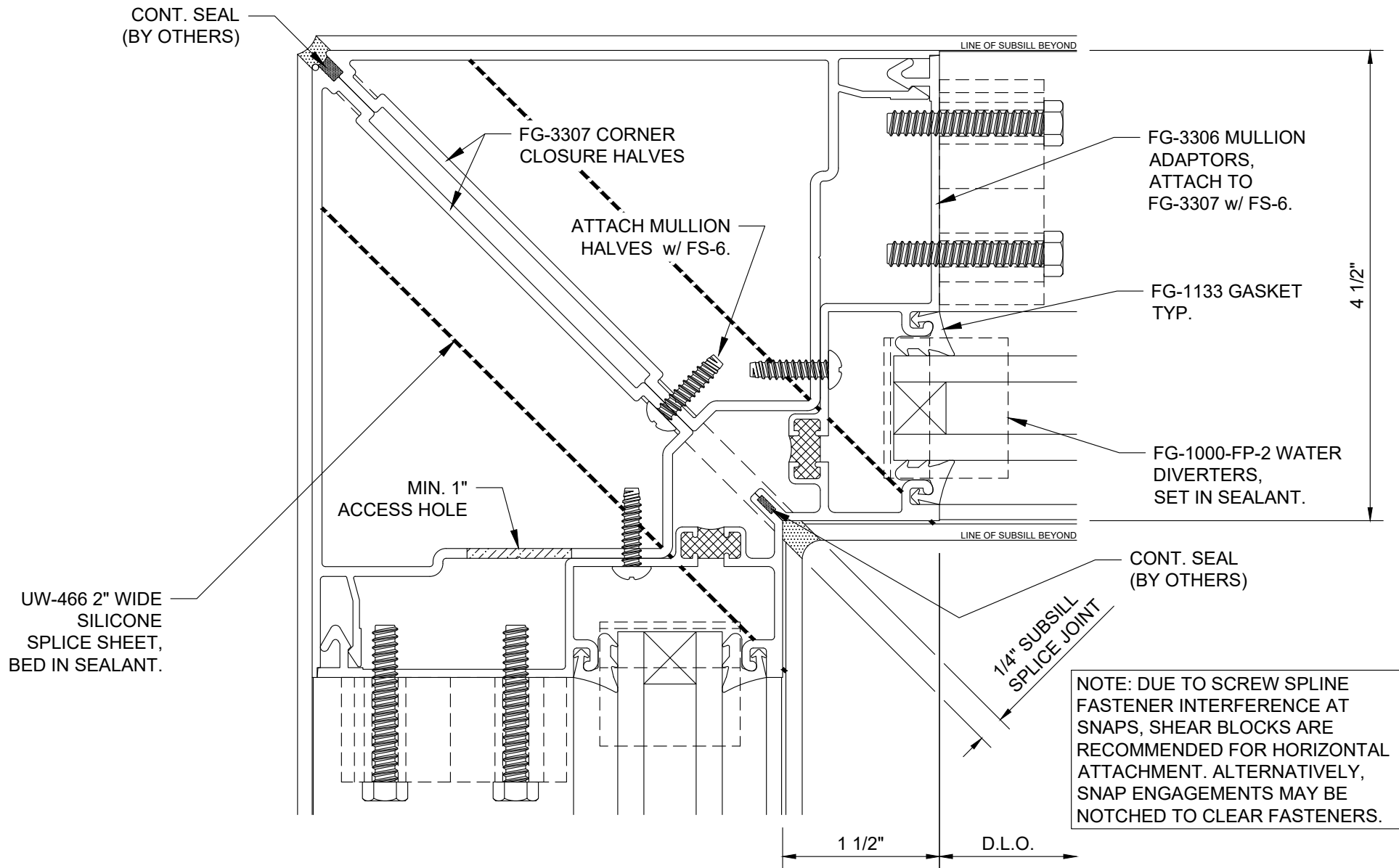
Series 3000 Thermal MultiPlane - Front Set Expansion Vertical - V4107



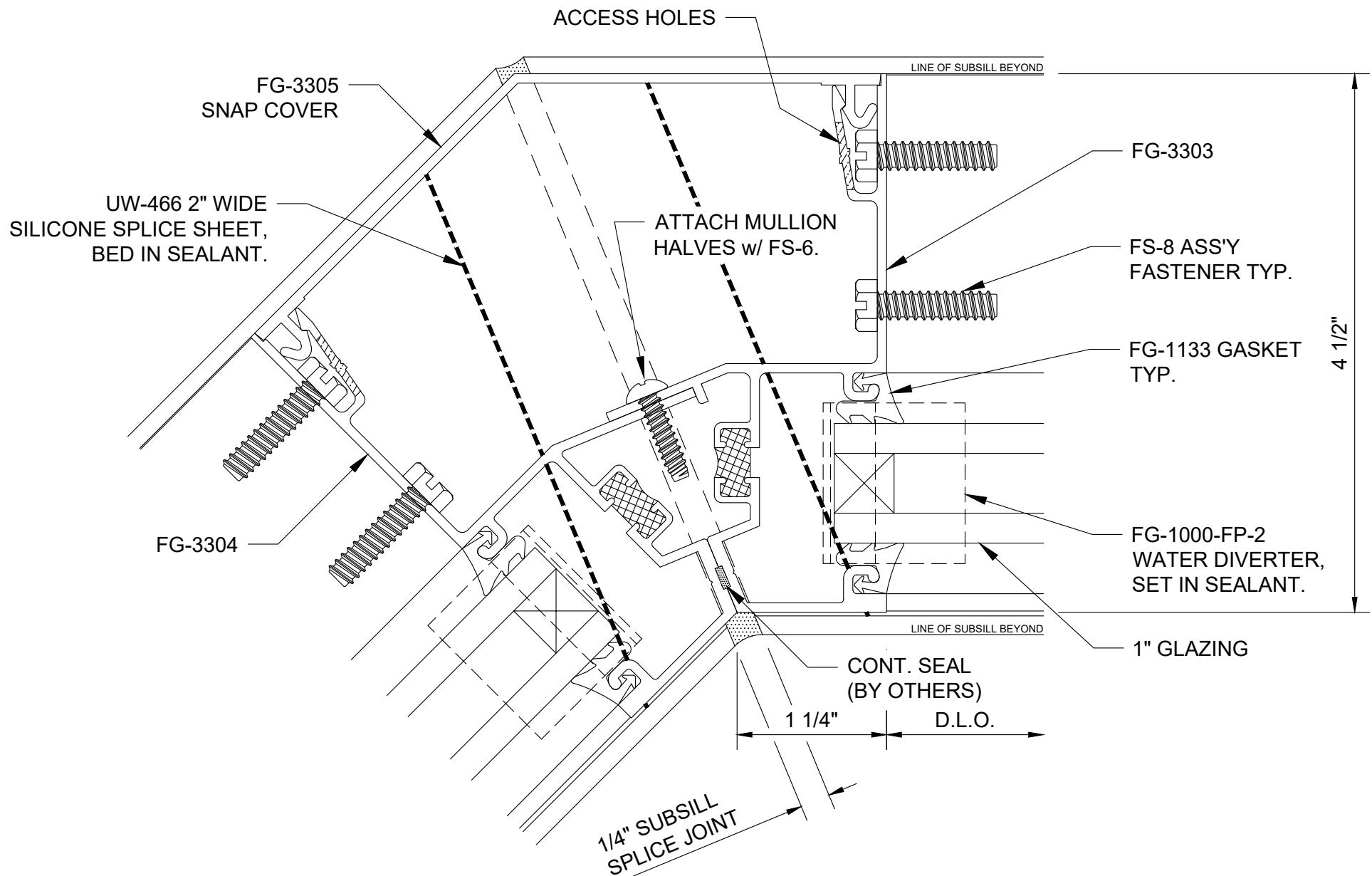
Series 3000 Thermal MultiPlane - Front Set 135° Outside Corner - V4110



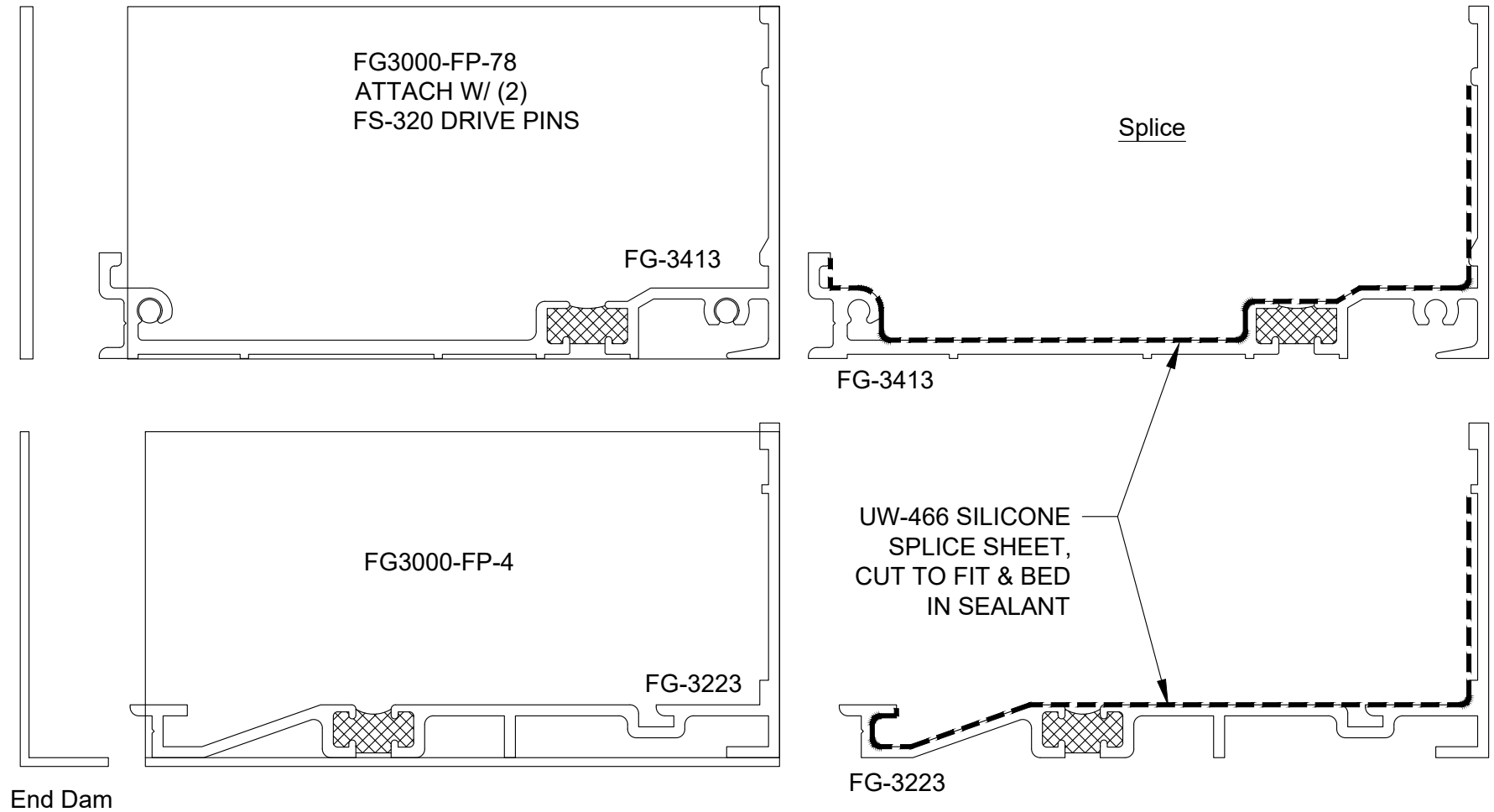
Series 3000 Thermal MultiPlane - Front Set 90° Outside Corner - V4111



Series 3000 Thermal MultiPlane - Front Set 90° Inside Corner - V4112

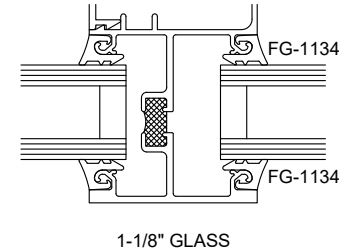
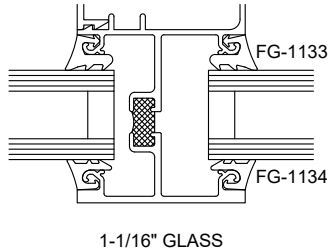
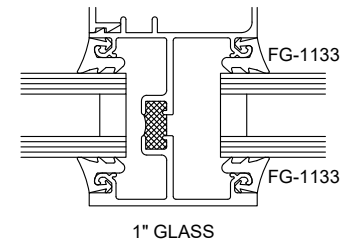
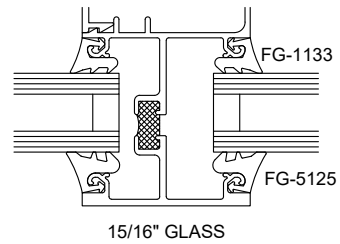
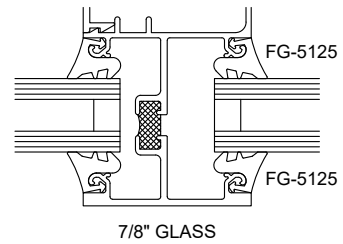
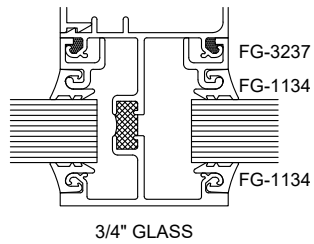
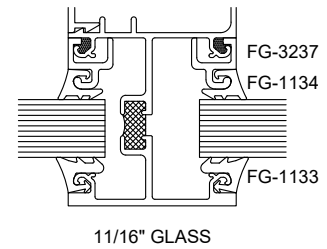
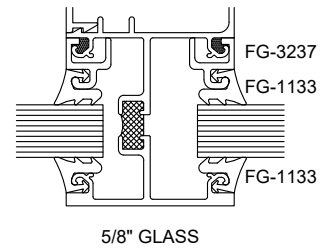
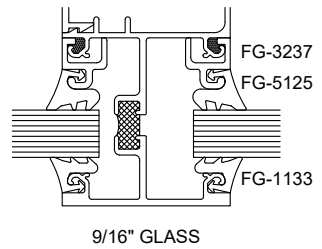
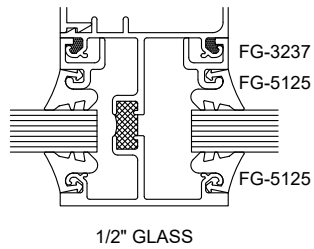
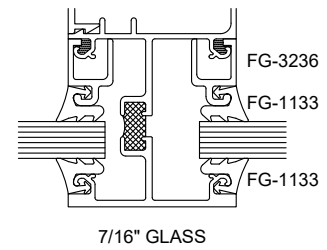
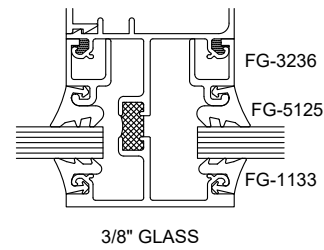
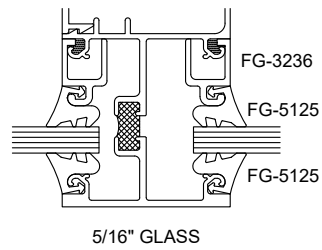
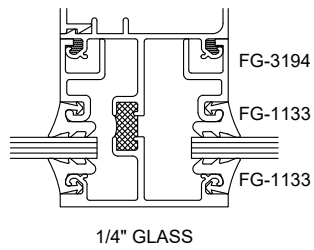


Series 3000 Thermal MultiPlane - Front Set 135° Inside Corner - V4114



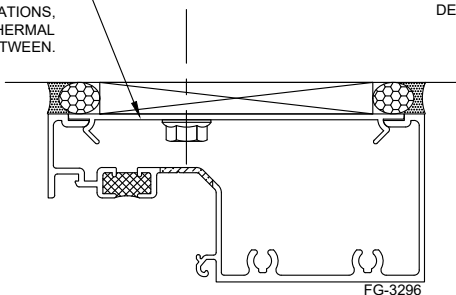
Note: Ref installation manual for additional splice & end dam info.

Series 3000 Thermal MultiPlane - Front Set Subsill Splicing and End Dams - M0950

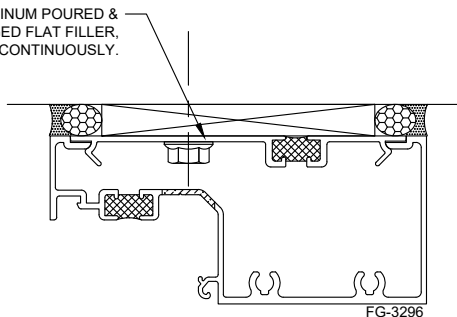


Series 3000/6000 Thermal MultiPlane - Front Set Glazing Options - M4148

FG-2122 ALUM. FILLER
IN 4" LENGTHS AT
ANCHOR LOCATIONS,
RUN FG-2188 THERMAL
FILLER BETWEEN.

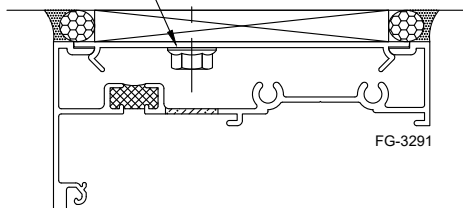


FG-3648 ALUMINUM POURED &
DEBRIDGED FLAT FILLER,
RUN CONTINUOUSLY.

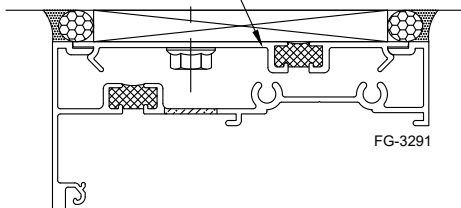


OUTSIDE GLAZED HEAD

FG-2122 ALUM. FILLER
IN 4" LENGTHS AT
ANCHOR LOCATIONS,
RUN FG-2188 THERMAL
FILLER BETWEEN.

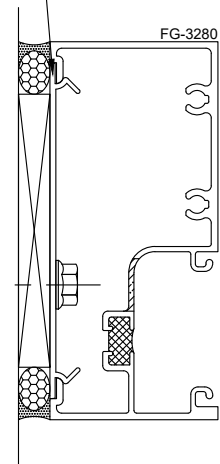


FG-3648 ALUMINUM
POURED & DEBRIDGED
FLAT FILLER,
RUN CONTINUOUSLY.

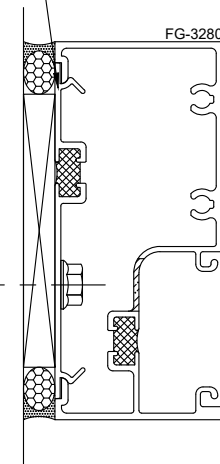


INSIDE GLAZED HEAD

FG-2122 ALUM. FILLER
IN 4" LENGTHS AT
ANCHOR LOCATIONS,
RUN FG-2188 THERMAL
FILLER BETWEEN.



FG-3648 ALUMINUM POURED
& DEBRIDGED FLAT FILLER,
RUN CONTINUOUSLY.



JAMB

NOTE THAT IF JAMB IS UNANCHORED, FG-2188
THERMAL FILLER MAY BE RUN CONTINUOUSLY.

Series 3000/6000 Thermal MultiPlane - Front Set Perimeter Filler Options - M4151