

# Oldcastle BuildingEnvelope®

1-866-Oldcastle (653-2278) - [www.obe.com](http://www.obe.com)

## SERIES 3000 THERMAL MULTIPLANE STOREFRONT 2" X 4-1/2" w/ 1" TYP. INFILL / 2-SIDED FRONT SET SSG SYSTEM

*(Drawing numbers---i.e., H4161---used as CAD detail reference only)*

### Elevation

#### **Horizontal Details**

H4161	Intermediate Horizontal
H4162	Head
H4165	Head at Captured Corner
H4168	Sill Option 1
H4169	Sill Option 2

#### **Vertical Details**

V4162	Jamb
V4165	Captured Vertical
V4168	SSG Vertical

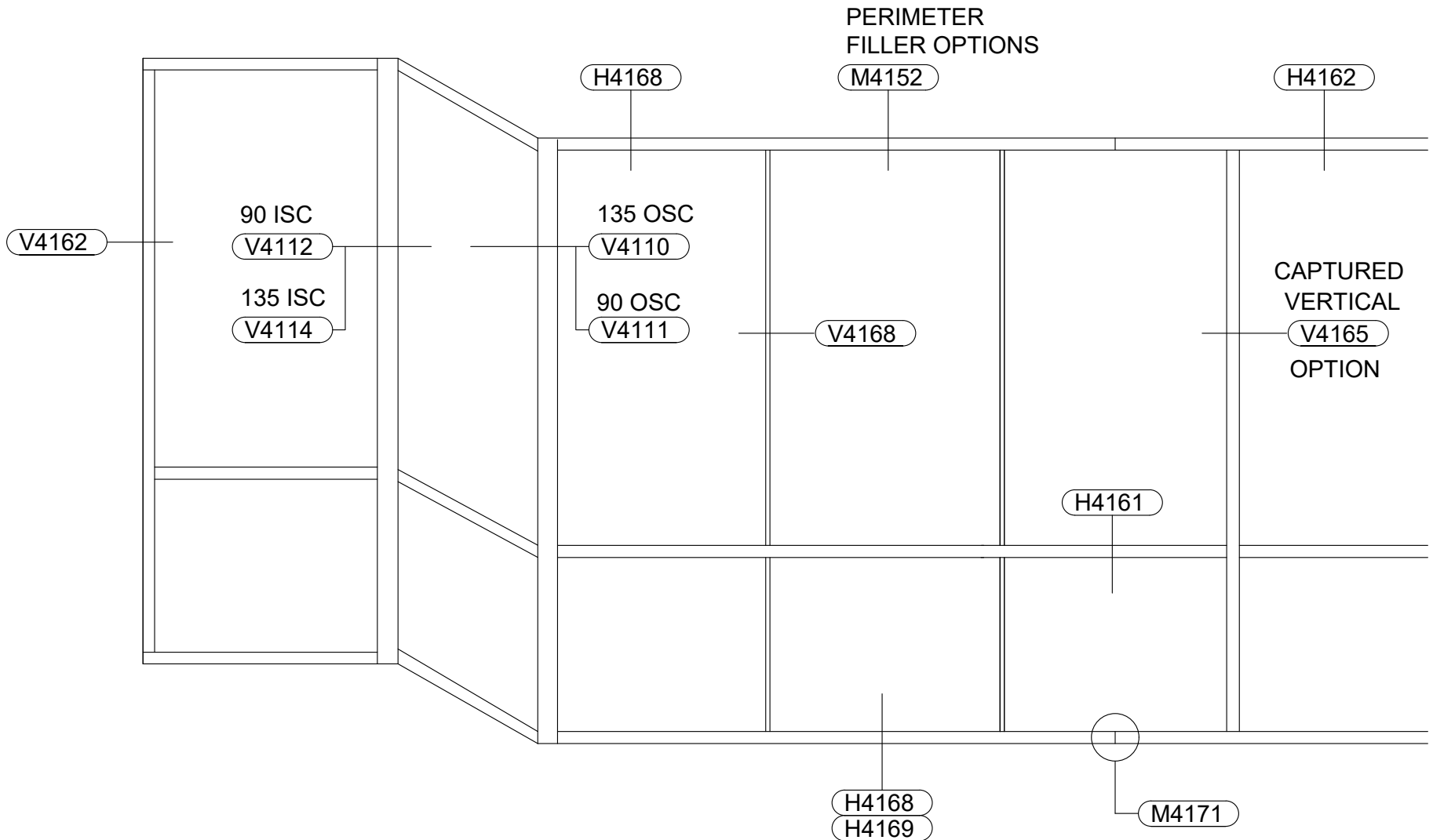
#### **Corner Details**

V4110	135° Outside Corner
V4111	90° Outside Corner
V4112	90° Inside Corner
V4114	135° Inside Corner

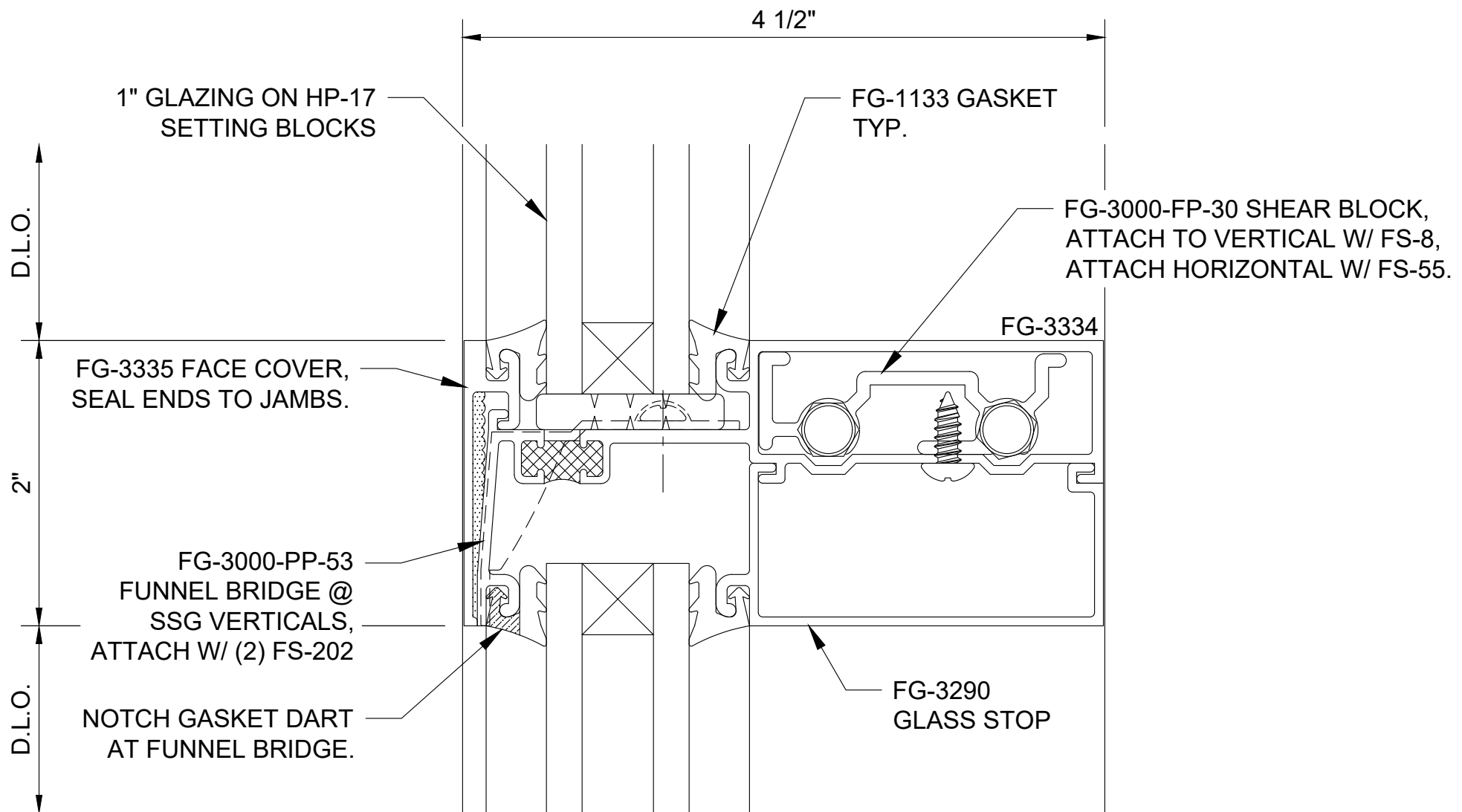
#### **Misc. Details**

M4152	Perimeter Filler Options
M4171	Head/Sill/Subsill Splice & EndDam

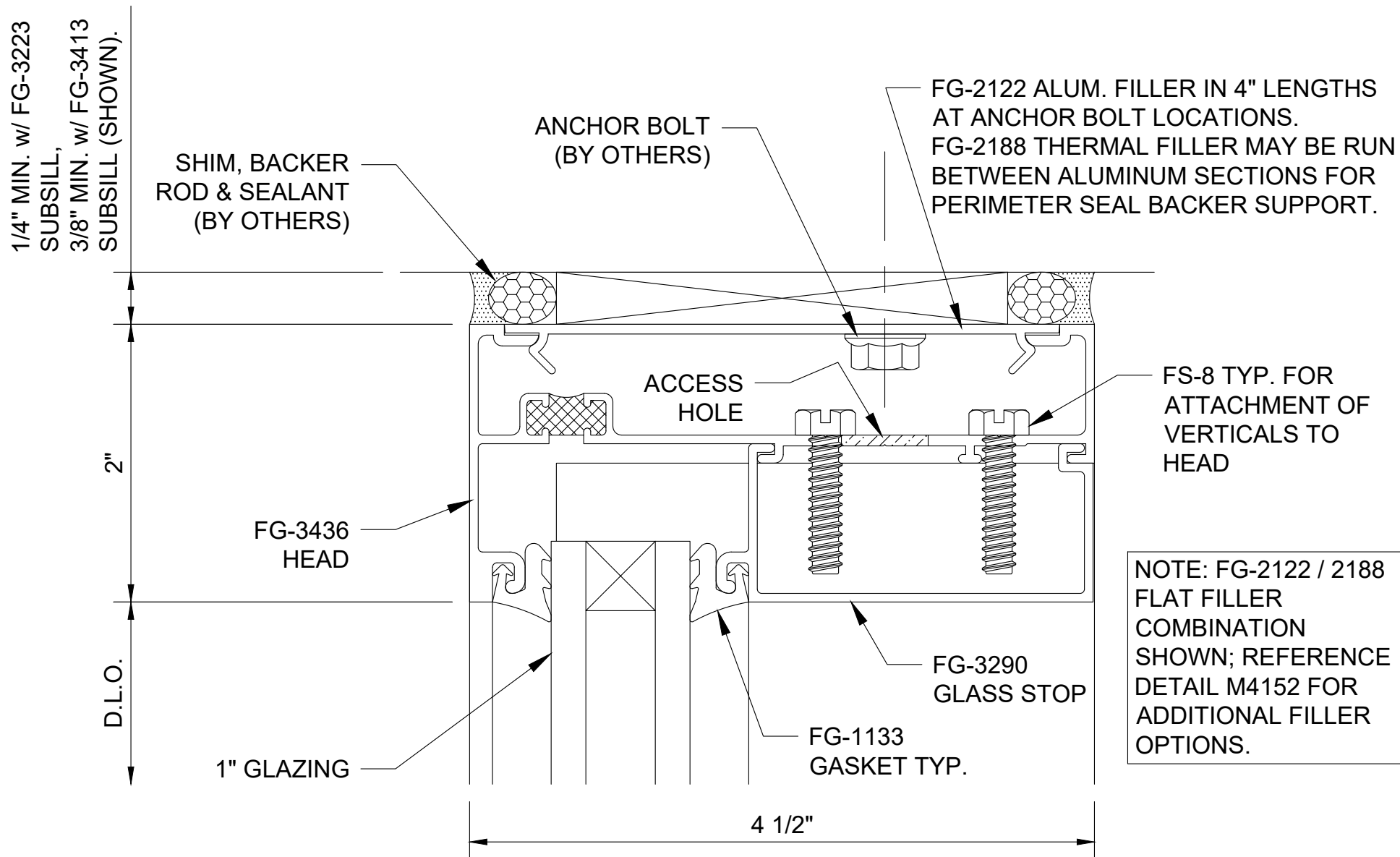
## Table of Contents



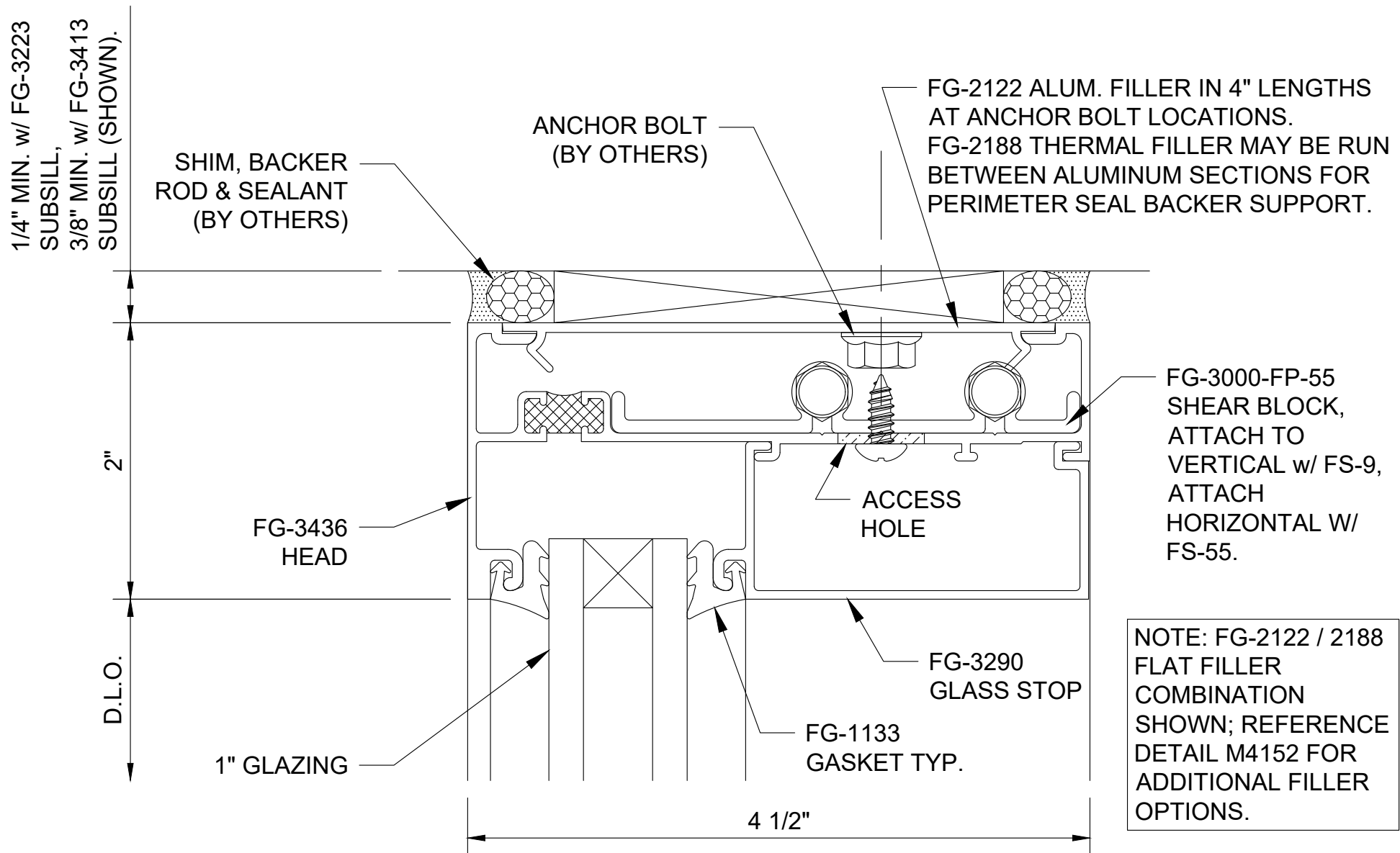
Series 3000 Thermal MultiPlane - Front Set 2-Sided SSG System  
2" x 4-1/2" w/ 1" Typ. Infill - Elevation



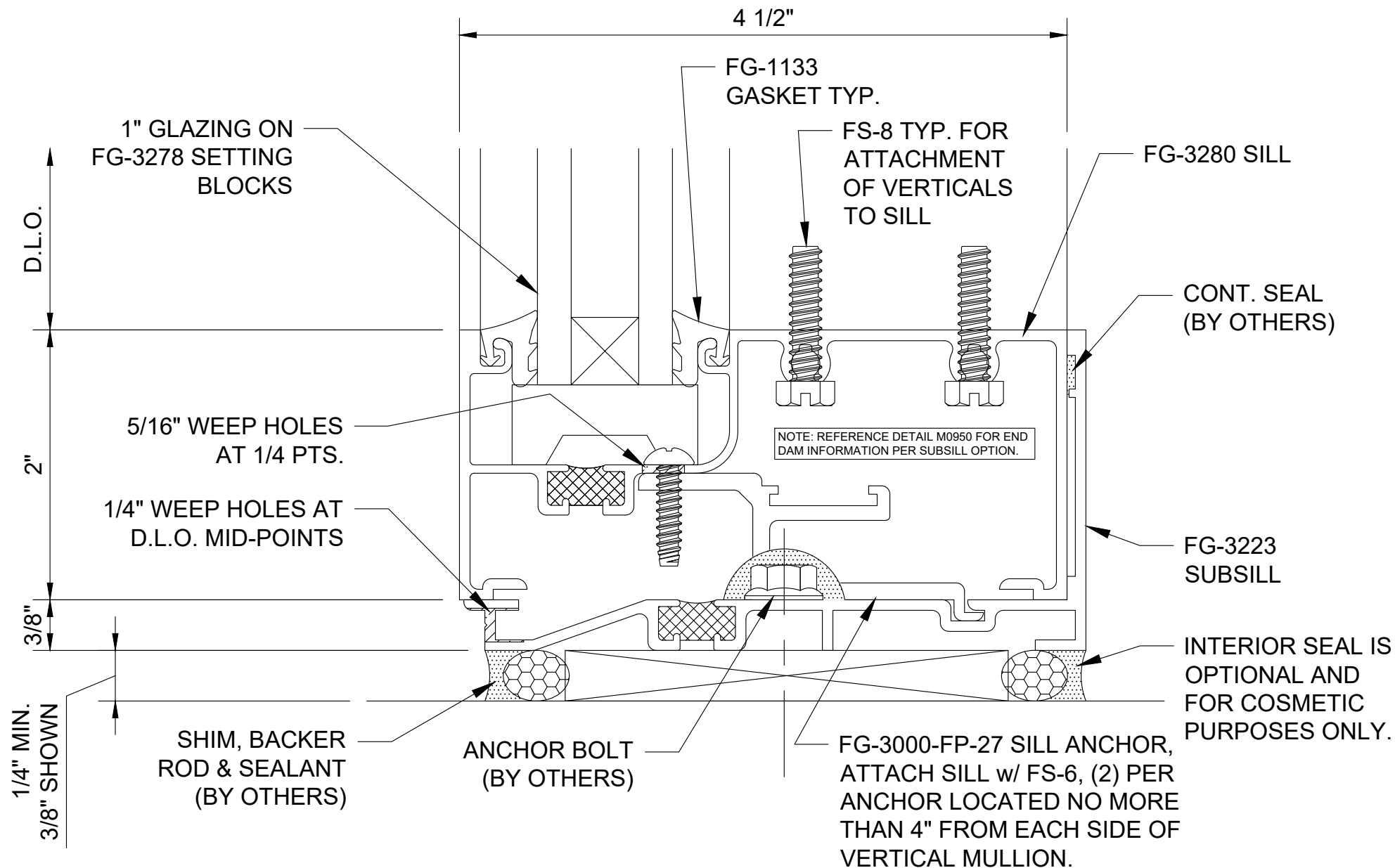
## Series 3000 Thermal MultiPlane - Front Set SSG System Intermediate Horizontal - H4161



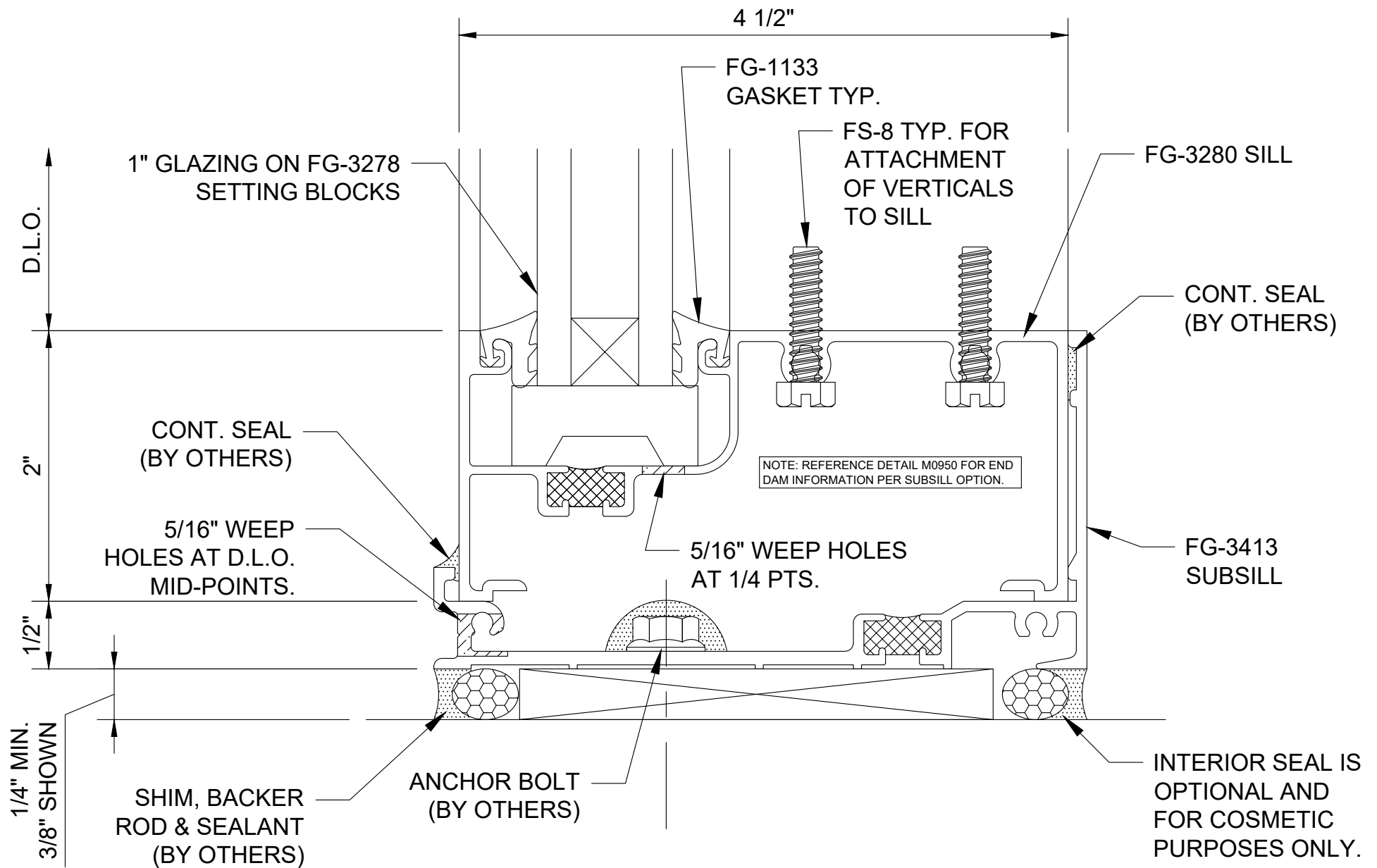
## Series 3000 Thermal MultiPlane - Front Set SSG System Head - H4162



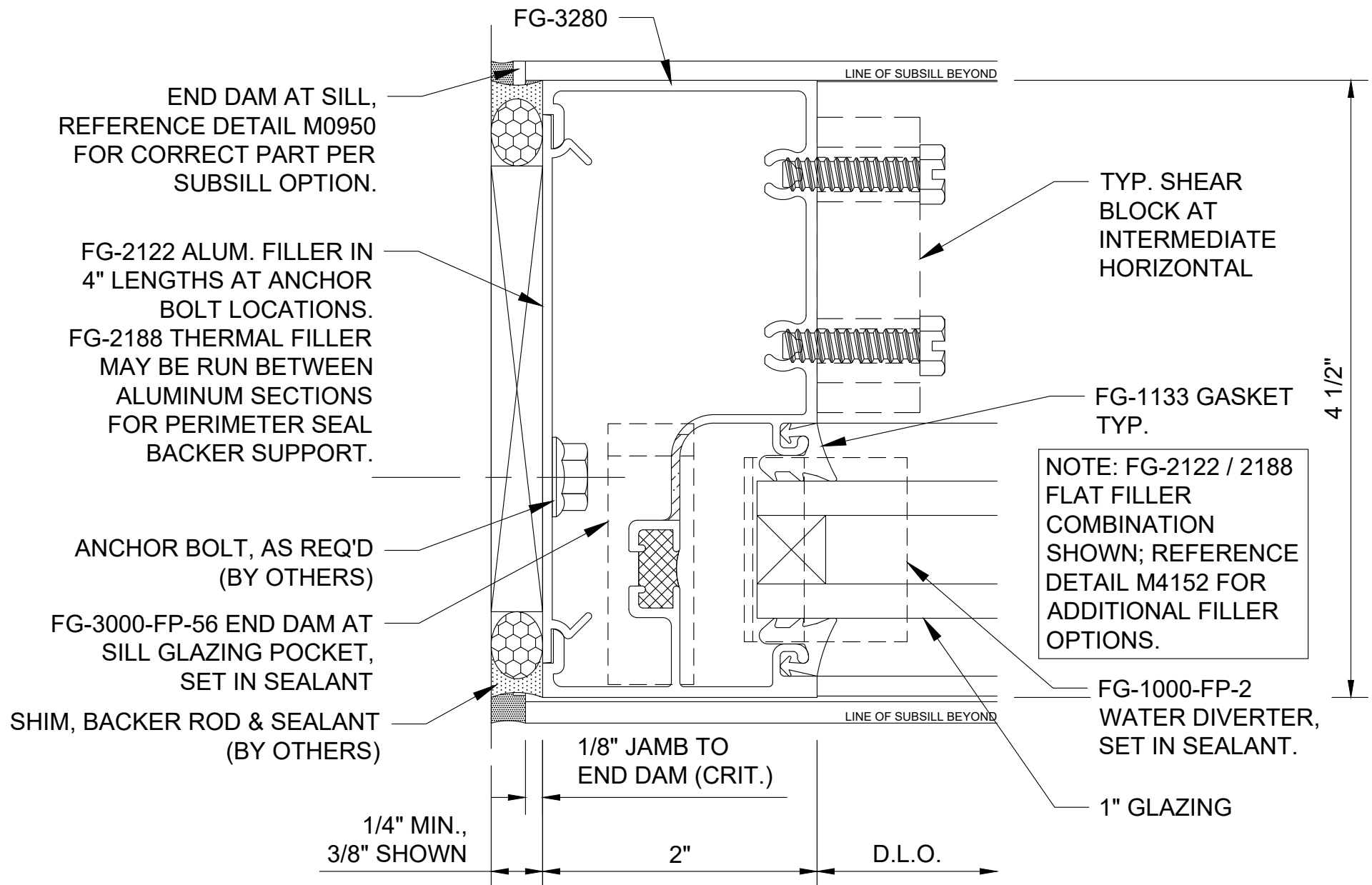
Series 3000 Thermal MultiPlane - Front Set SSG System  
Head at Captured Corner - H4165



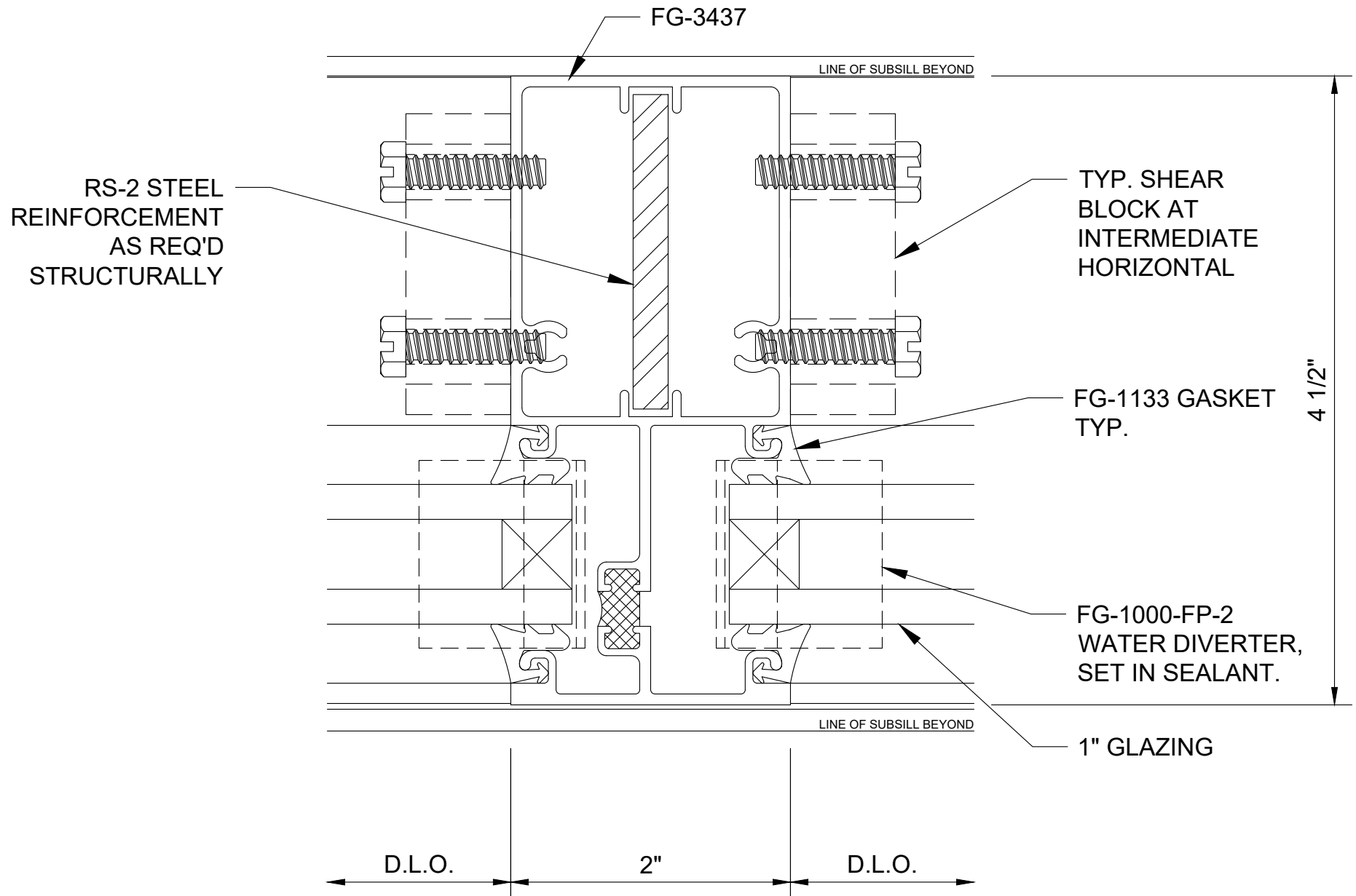
## Series 3000 Thermal MultiPlane - Front Set SSG System Sill - H4168



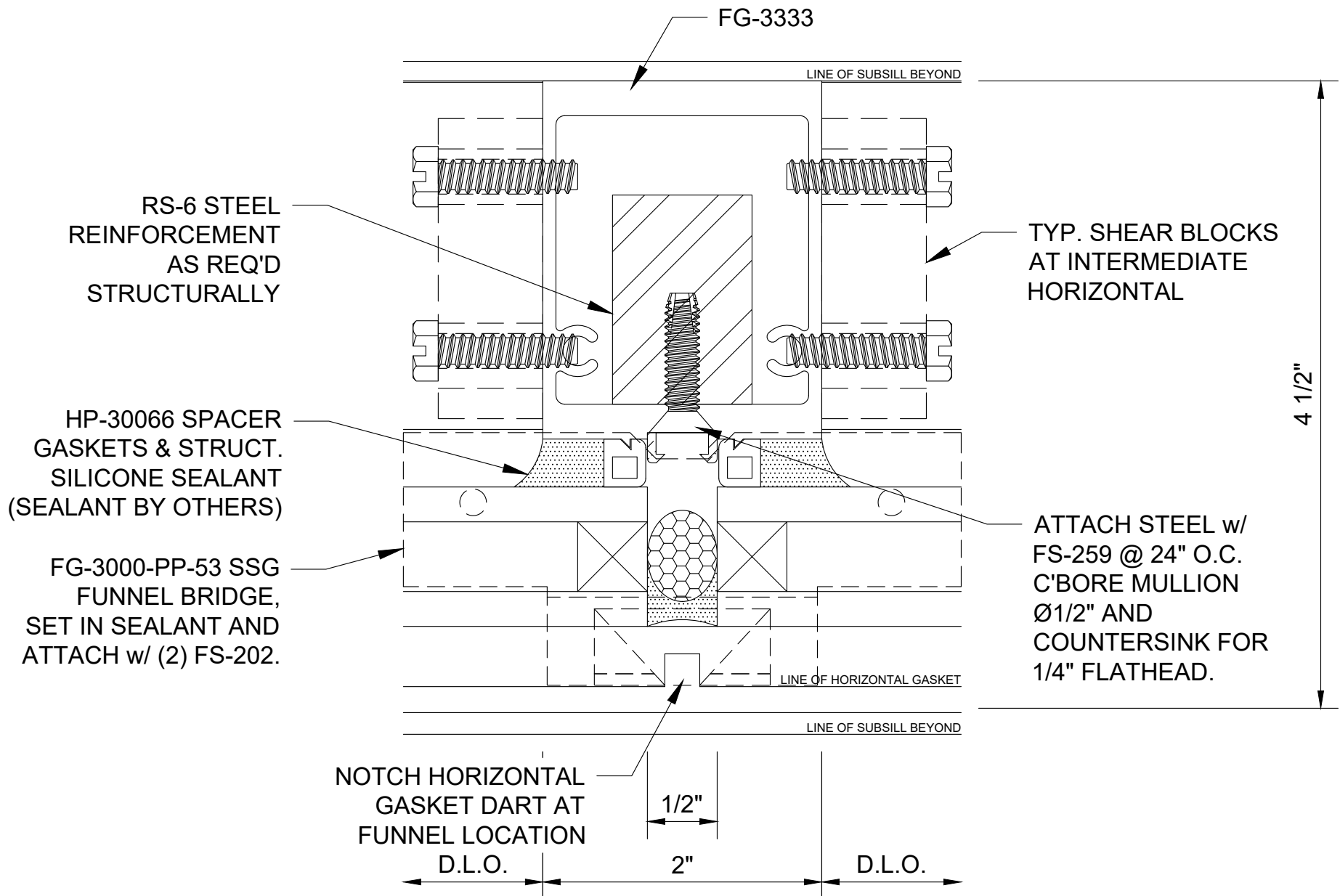
## Series 3000 Thermal MultiPlane - Front Set SSG System Sill Option - H4169



## Series 3000 Thermal MultiPlane - Front Set SSG System Jamb - V4162

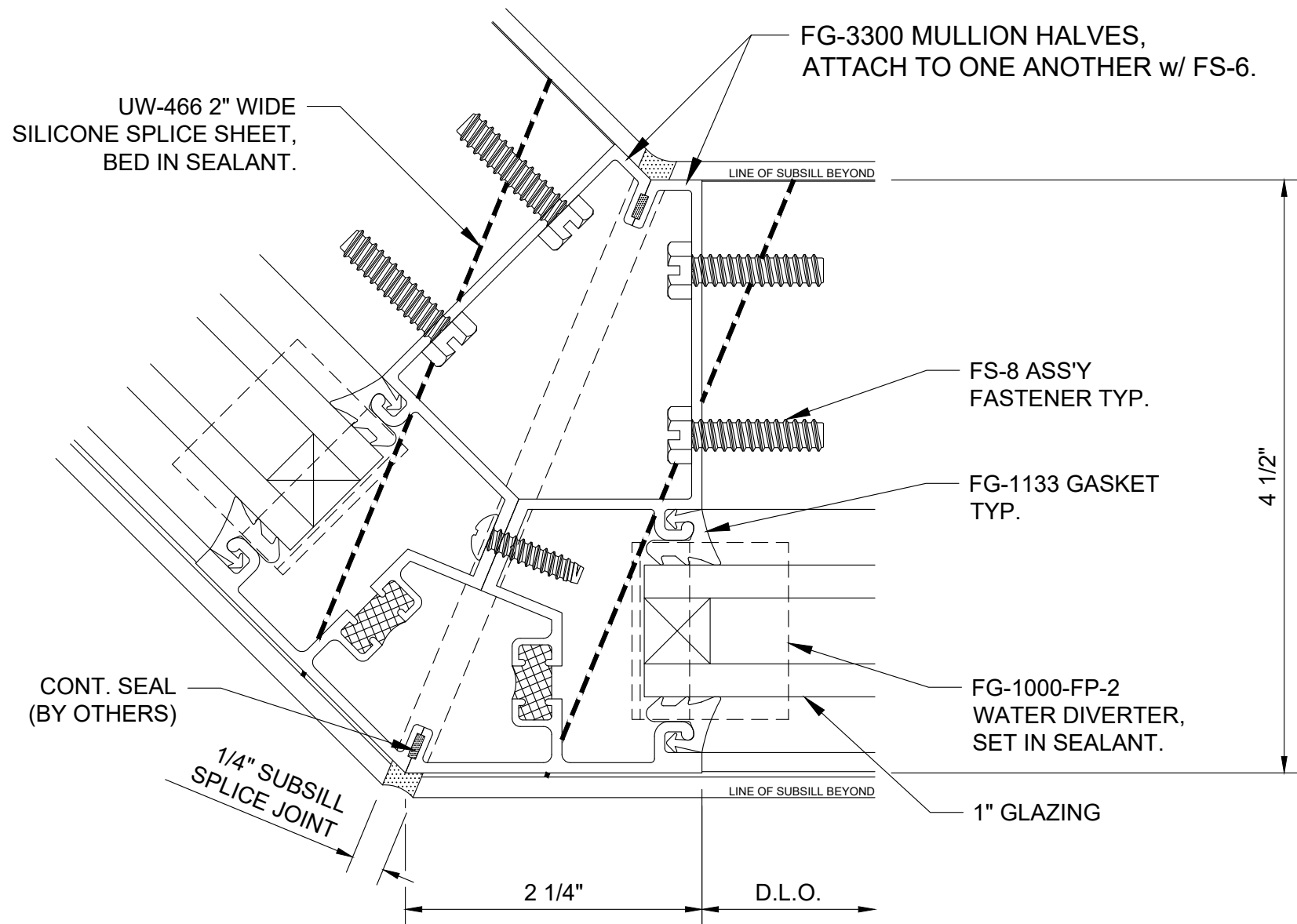


## Series 3000 Thermal MultiPlane - Front Set SSG System Captured Vertical - V4168

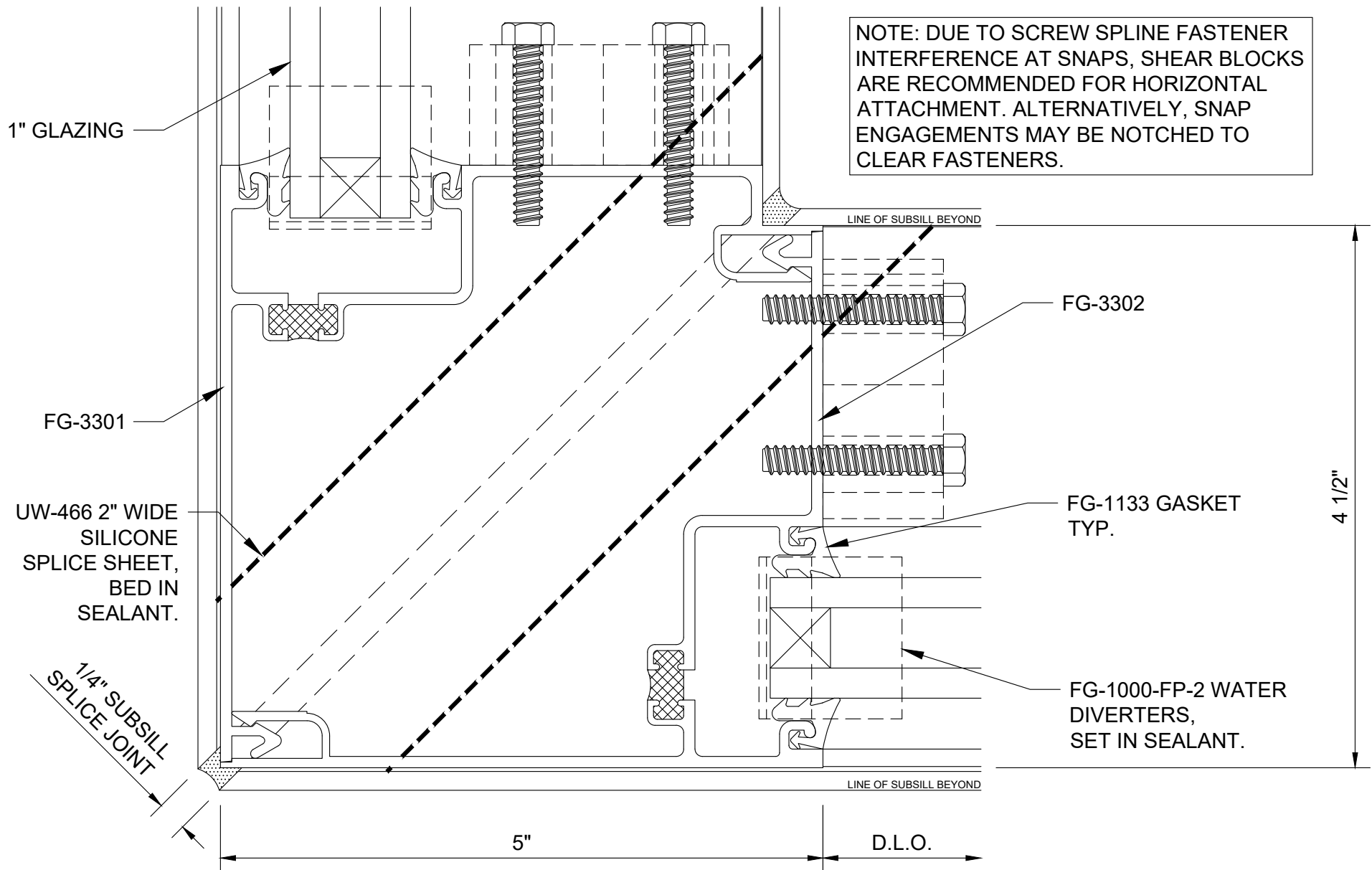


## Series 3000 Thermal MultiPlane - Front Set SSG System

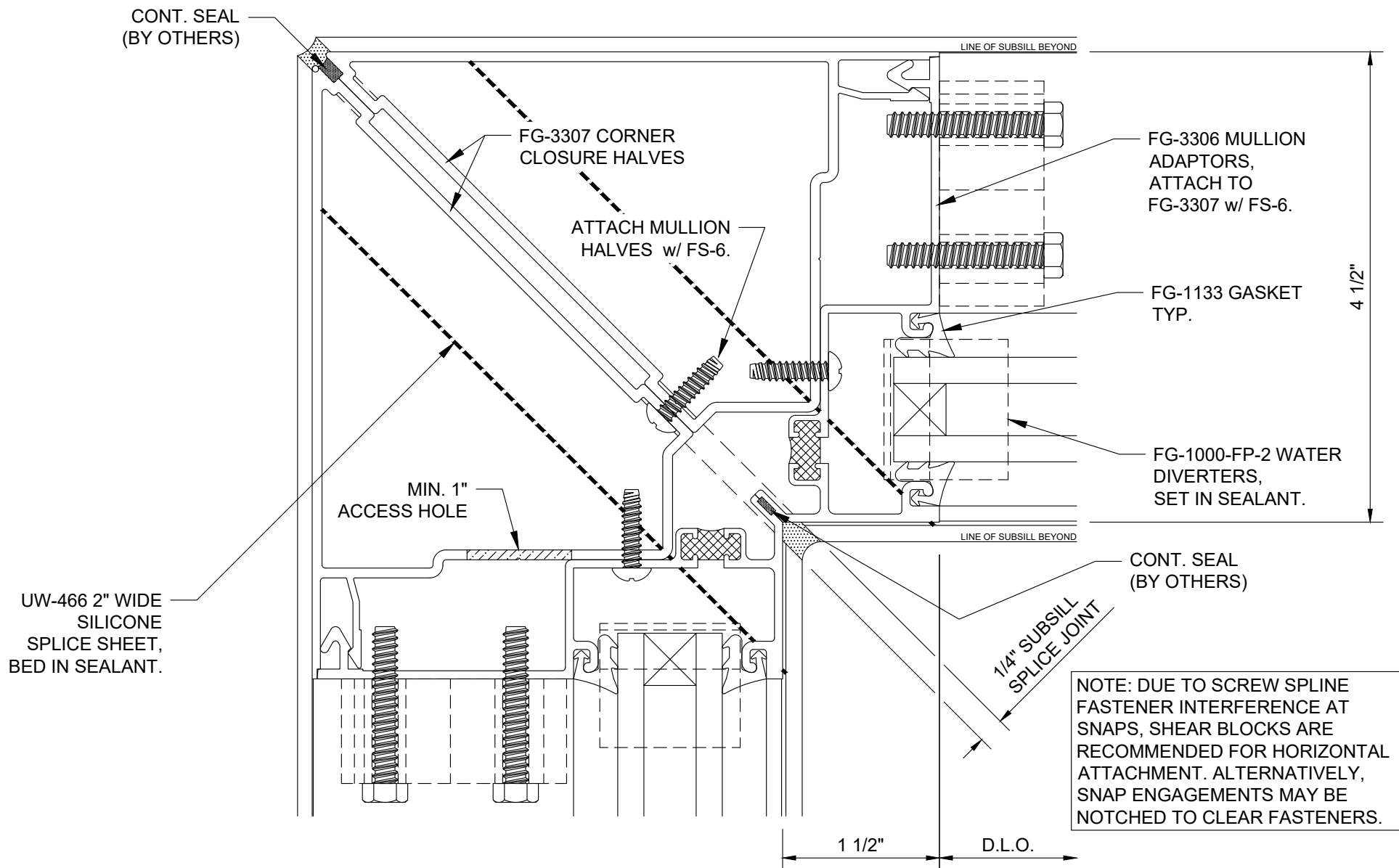
### SSG Vertical - V4168



## Series 3000 Thermal MultiPlane - Front Set SSG System 135° Outside Corner - V4110

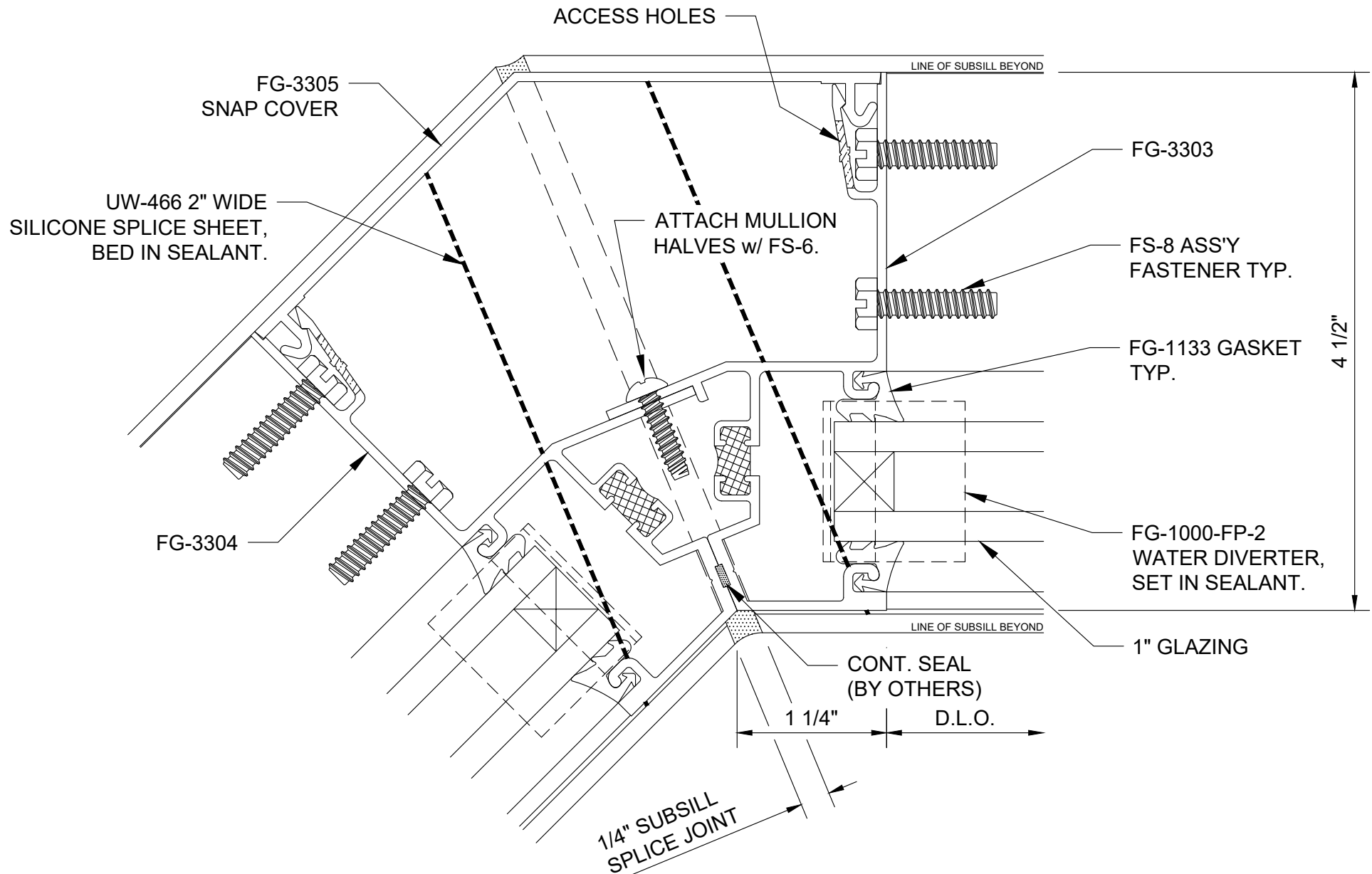


Series 3000 Thermal MultiPlane - Front Set SSG System  
90° Outside Corner - V4111



## Series 3000 Thermal MultiPlane - Front Set SSG System

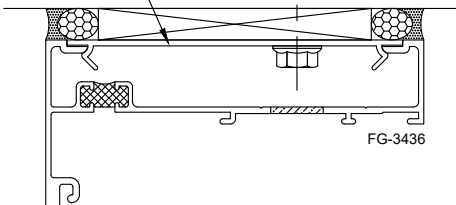
### 90° Inside Corner - V4112



## Series 3000 Thermal MultiPlane - Front Set SSG System

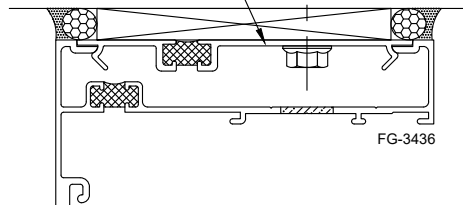
### 135° Inside Corner - V4114

FG-2122 ALUM. FILLER  
IN 4" LENGTHS AT  
ANCHOR LOCATIONS,  
RUN FG-2188 THERMAL  
FILLER BETWEEN.



FG-3436

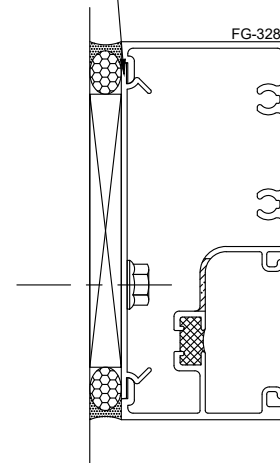
FG-3648 ALUMINUM  
POURED & DEBRIDGED  
FLAT FILLER,  
RUN CONTINUOUSLY.



FG-3436

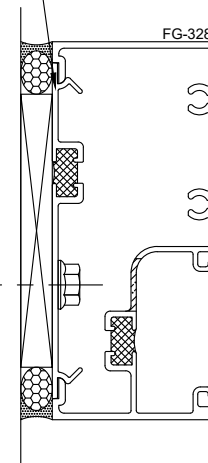
## HEAD

FG-2122 ALUM. FILLER  
IN 4" LENGTHS AT  
ANCHOR LOCATIONS,  
RUN FG-2188 THERMAL  
FILLER BETWEEN.



FG-3280

FG-3648 ALUMINUM POURED  
& DEBRIDGED FLAT FILLER,  
RUN CONTINUOUSLY.

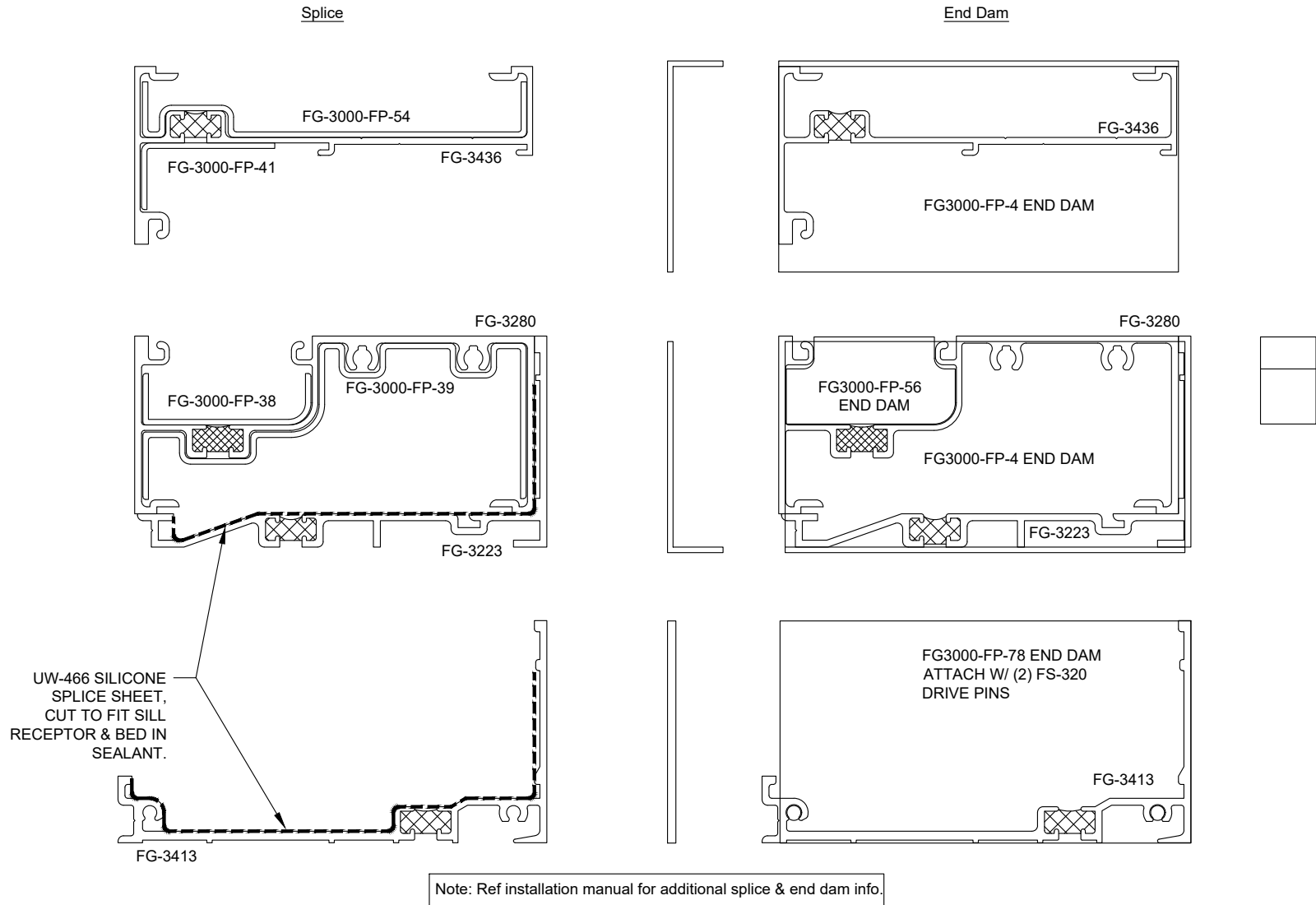


FG-3280

## JAMB

NOTE THAT IF JAMB IS UNANCHORED, FG-2188 THERMAL FILLER MAY BE RUN CONTINUOUSLY.

# Series 3000 Thermal MultiPlane - Front Set SSG Perimeter Filler Options - M4152



## Series 3000 Thermal MultiPlane - Front Set SSG System Splicing and End Dam Information - M4171