

Oldcastle BuildingEnvelope®

1-866-Oldcastle (653-2278) - www.obe.com

SERIES 3000 THERMAL MULTIPLANE STOREFRONT 2" X 4-1/2" w/ 1" TYP. INFILL / CENTER SET

(Drawing numbers---i.e., H0901--used as CAD detail reference only)

Elevation

Horizontal Details

H0901	Intermediate Horizontal - Outside Glazed
H0902	Head - Outside Glazed
H0903	Sill - Outside Glazed Option 1
H0910	Sill - Outside Glazed Option 2
H0912	Head w/ Receptor
H0914	Intermediate Horizontal - Inside Glazed
H0915	Head - Inside Glazed
H0916	Sill - Inside Glazed Option 1
H0917	Sill - Inside Glazed Option 2
H0919	Horizontal at Operable Window
H0941	Horizontal - High Profile
H0943	High Sidelite Base Sill

Vertical Details

V0902	Jamb
V0905	Heavy Vertical
V0906	Typical Vertical
V0907	Expansion Vertical

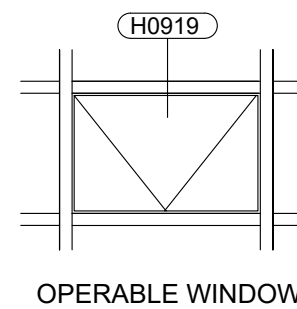
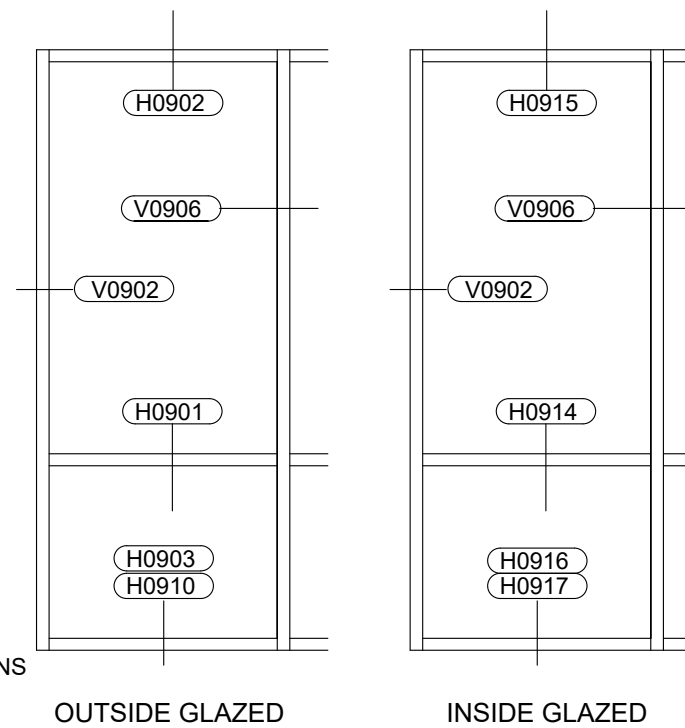
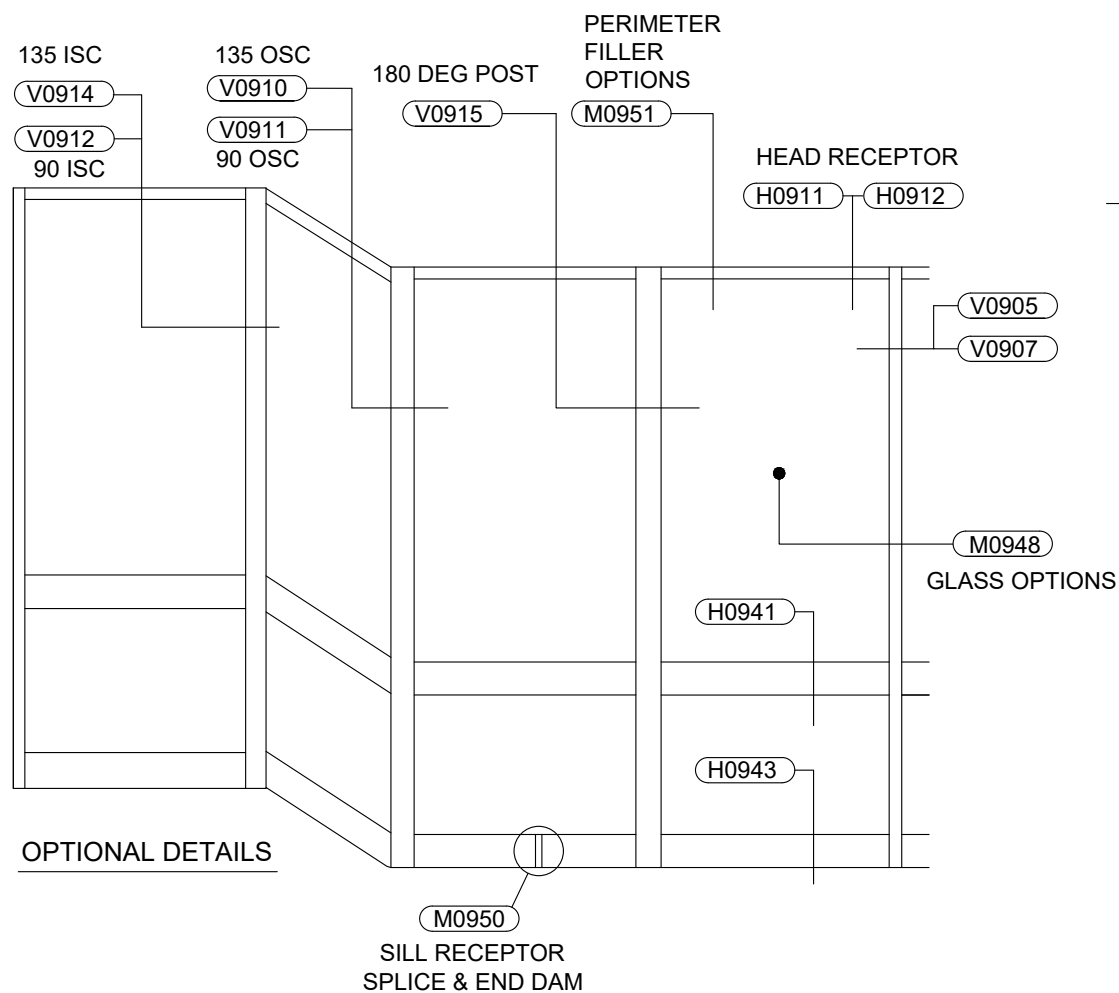
Corner Details

V0910	135° Outside Corner
V0911	90° Outside Corner
V0912	90° Inside Corner
V0914	135° Inside Corner
V0915	180° Post

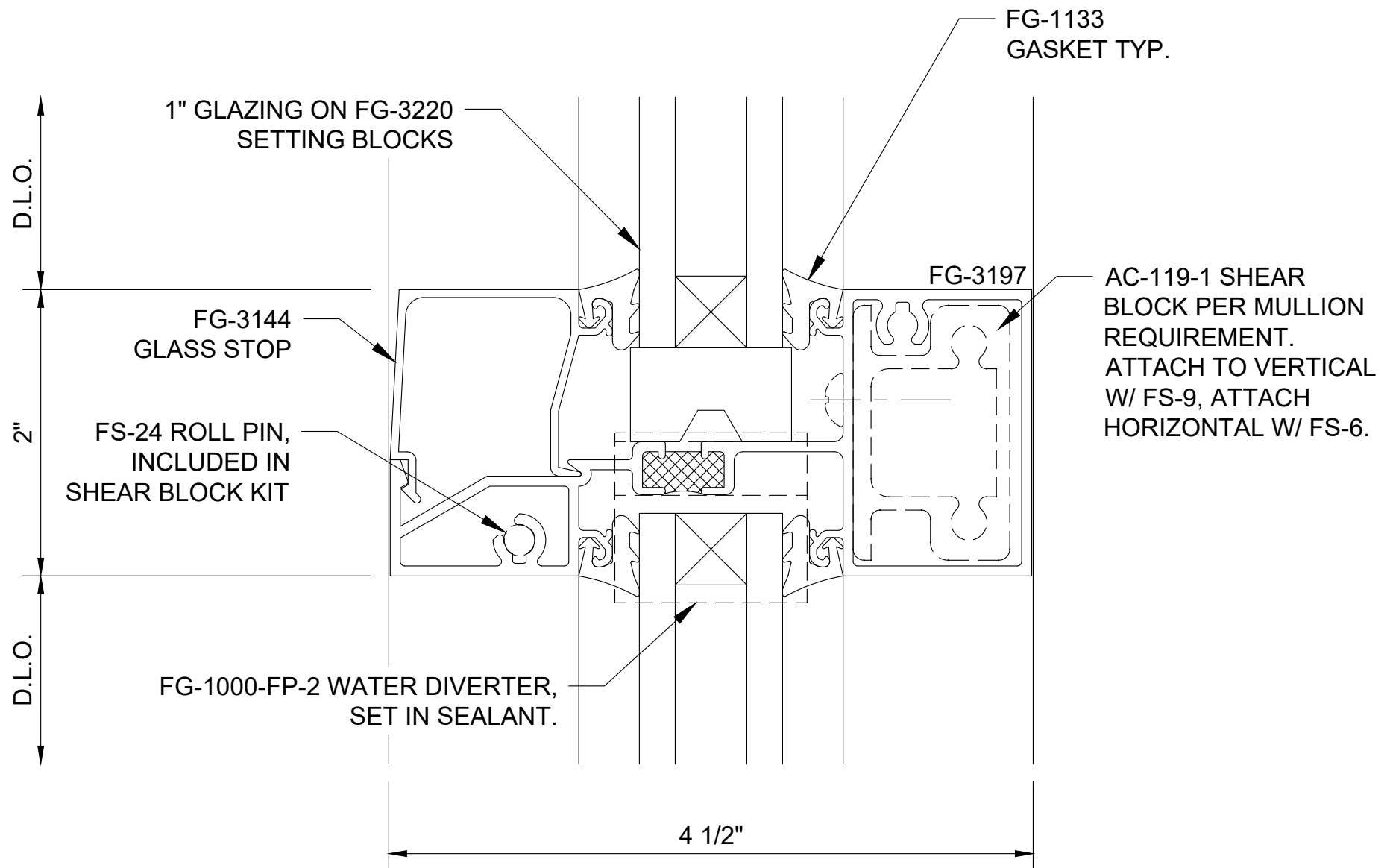
Misc. Details

M0948	Glass Options
M0950	SubSill Splicing & End Dam
M0951	Perimeter Filler Options

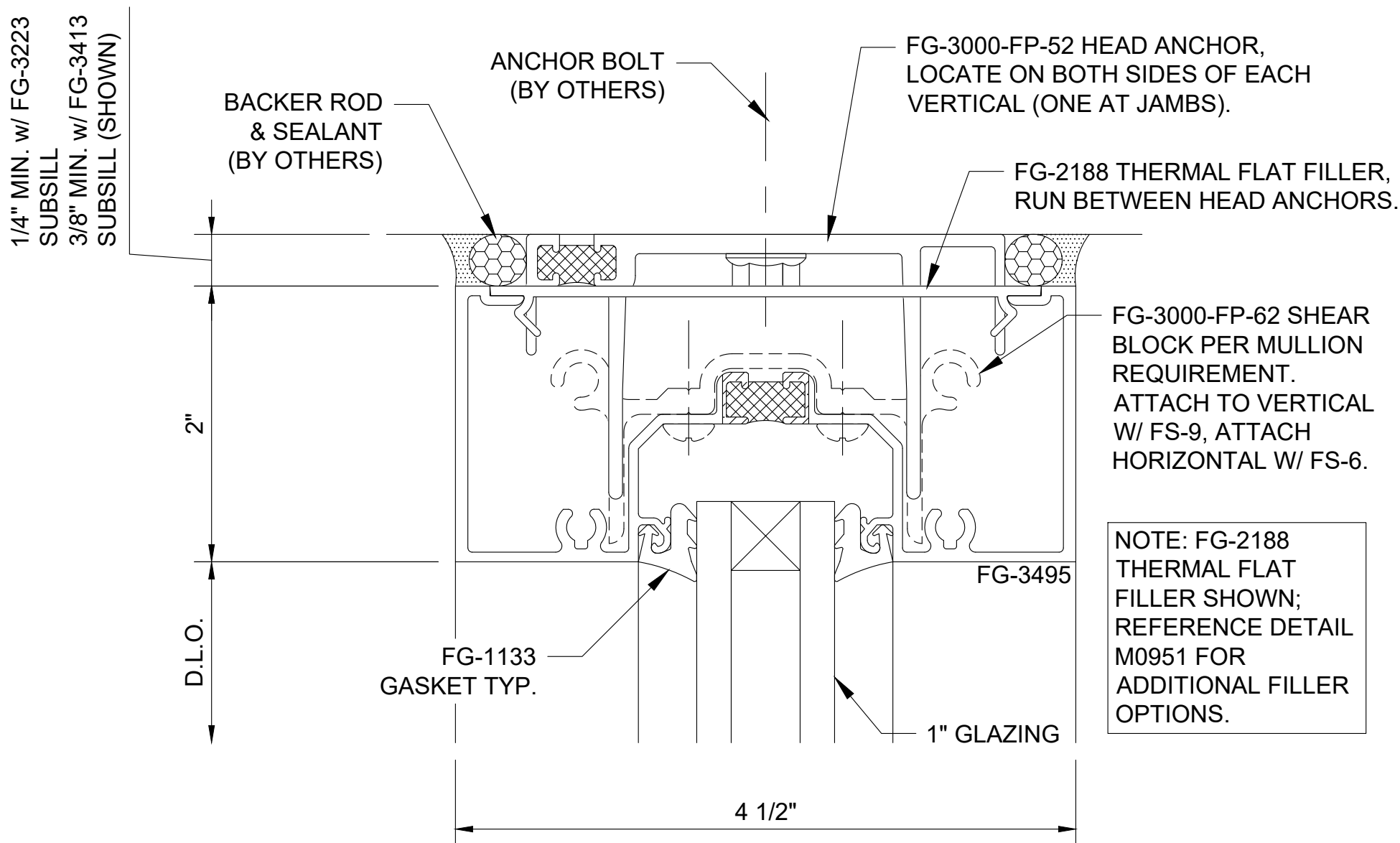
Table of Contents



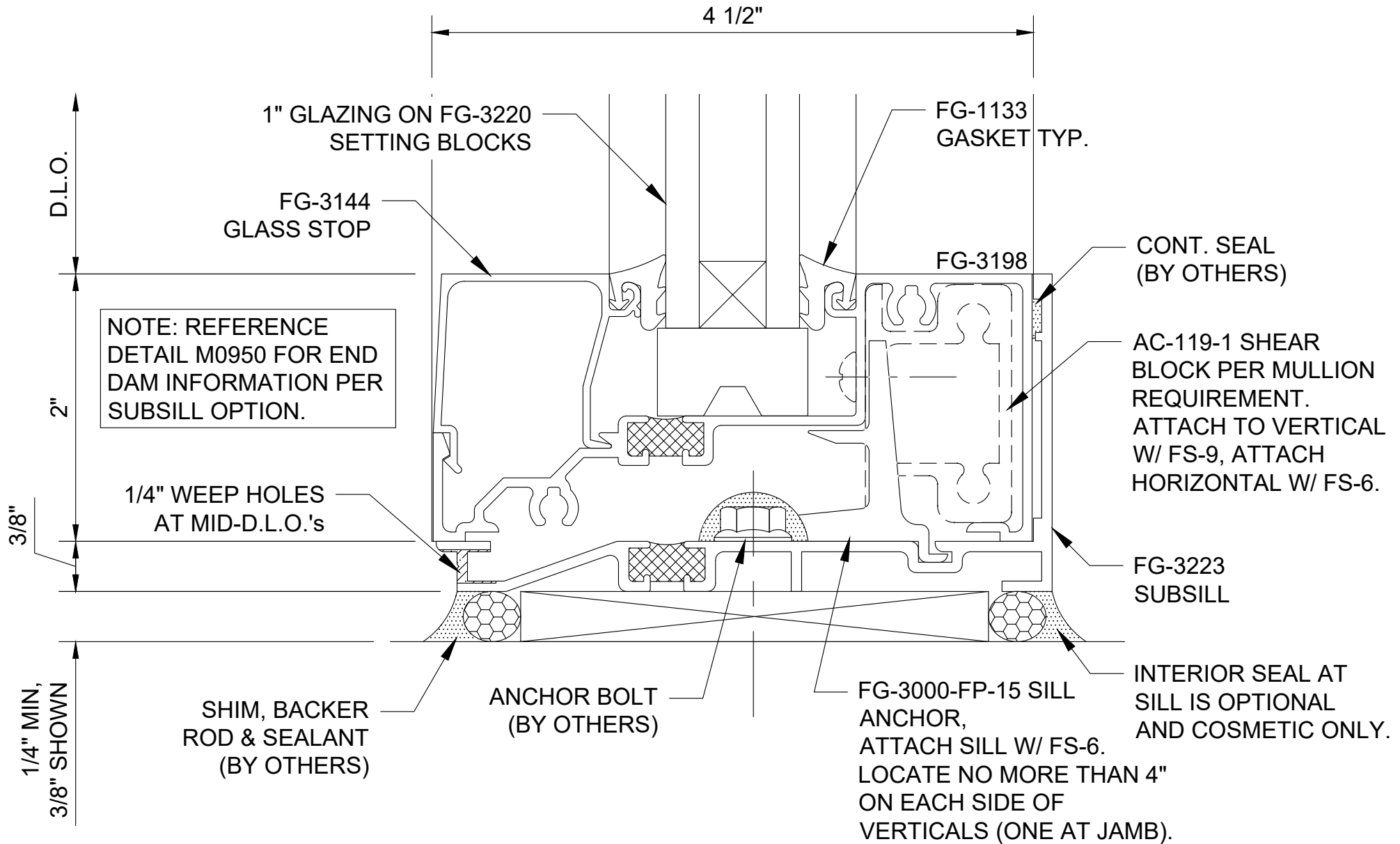
Series 3000 Thermal MultiPlane - Center Set 2" x 4-1/2" Thermally Broken Storefront for 1" Typ. Infill - Elevation



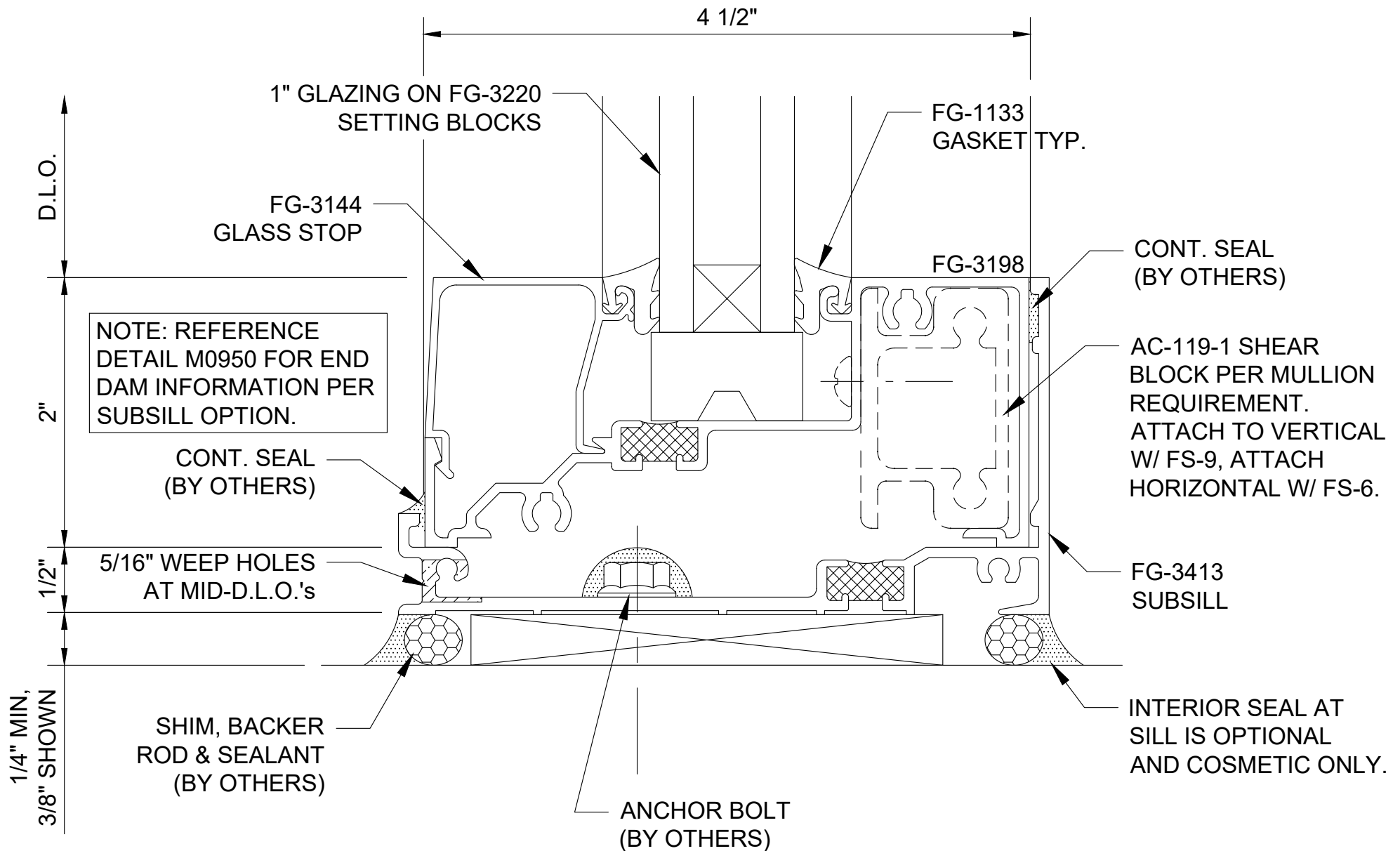
Series 3000 Thermal MultiPlane - Center Set Intermediate Horizontal - Outside Glazed - H0901



Series 3000 Thermal MultiPlane - Center Set Head - Outside Glazed - H0902

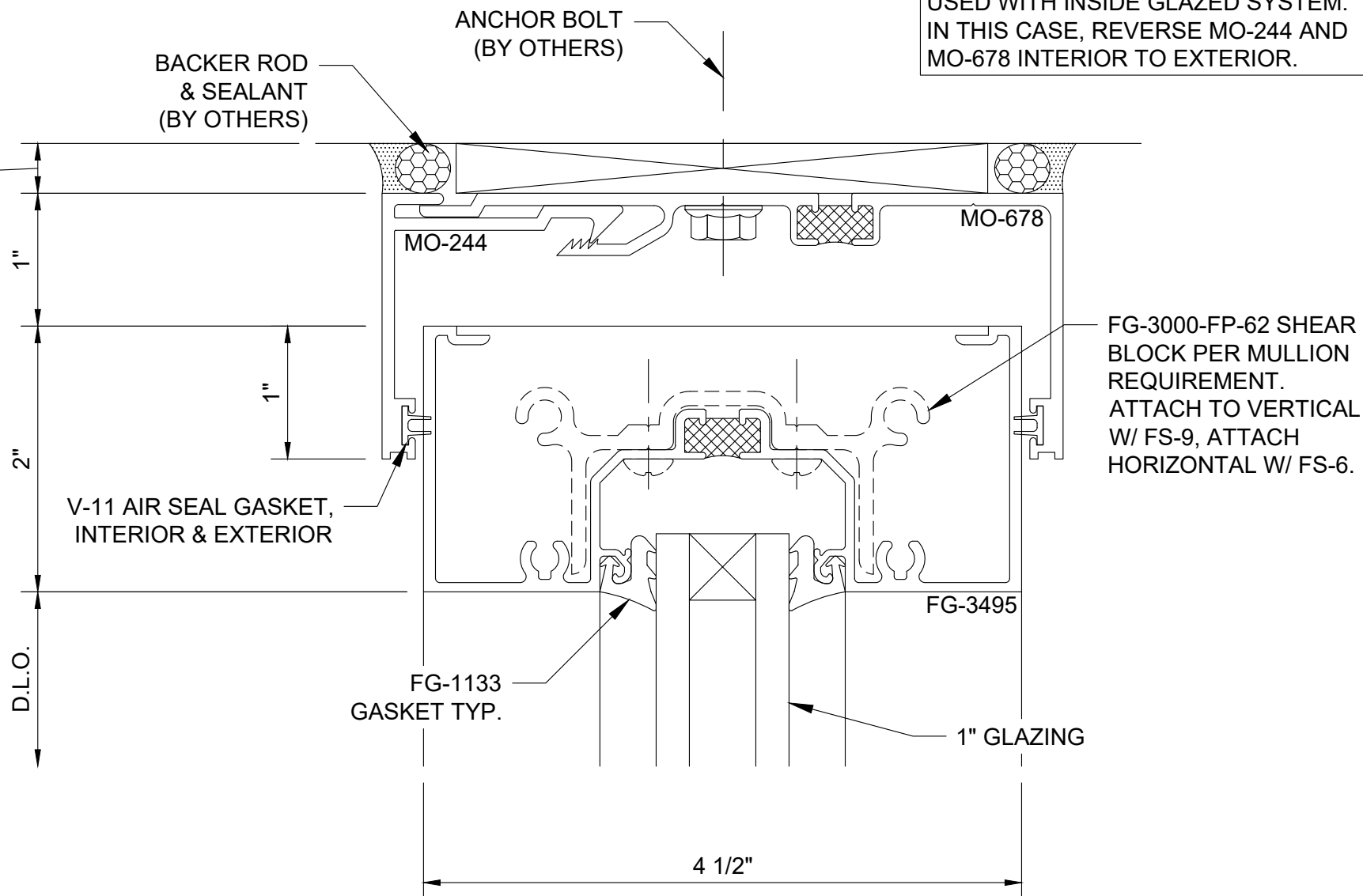


Series 3000 Thermal MultiPlane - Center Set Sill - Outside Glazed - H0903



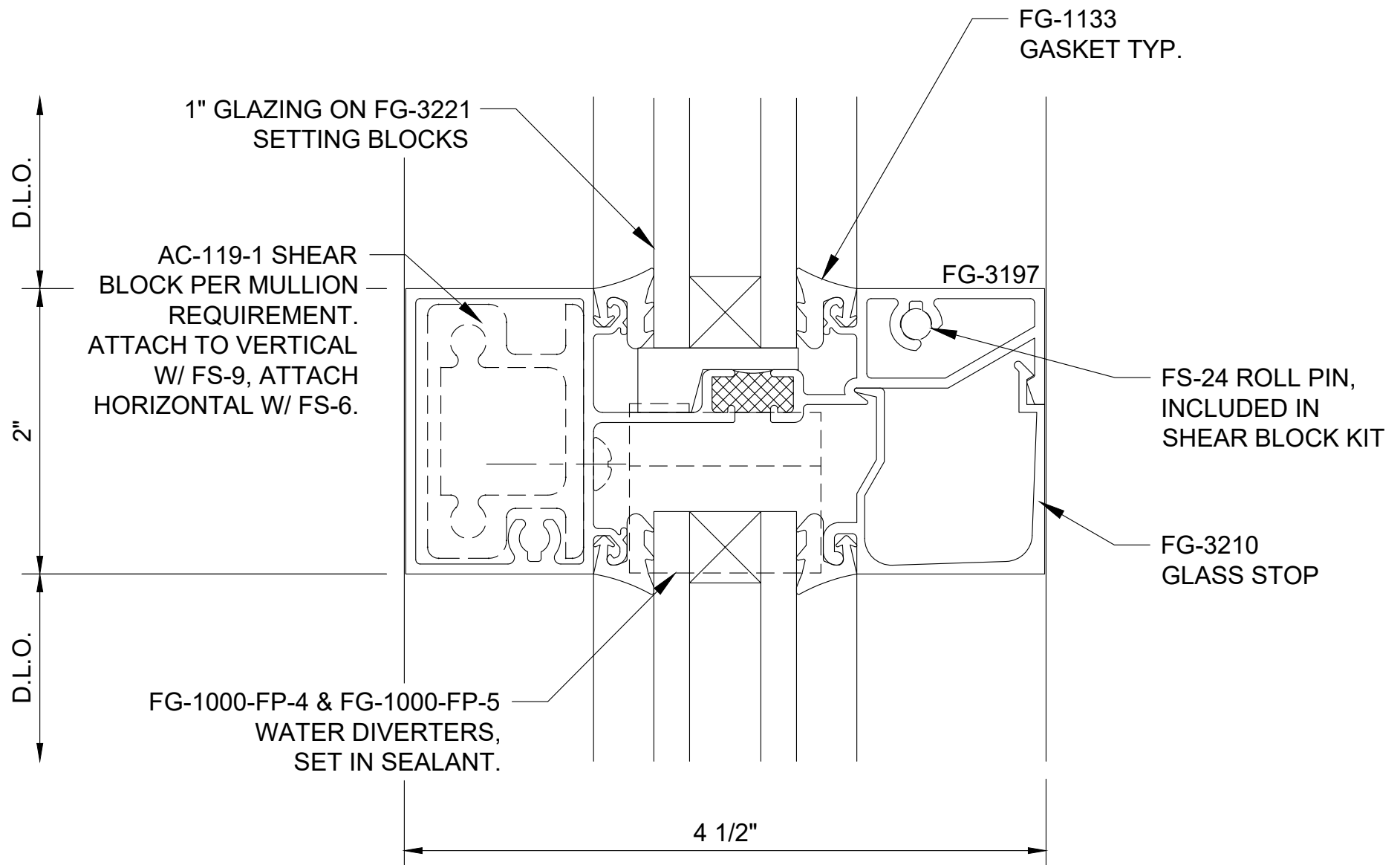
Series 3000 Thermal MultiPlane - Center Set Sill Option - Outside Glazed - H0910

1/4" MIN. w/ FG-3223
SUBSILL
3/8" MIN. w/ FG-3413
SUBSILL (SHOWN)

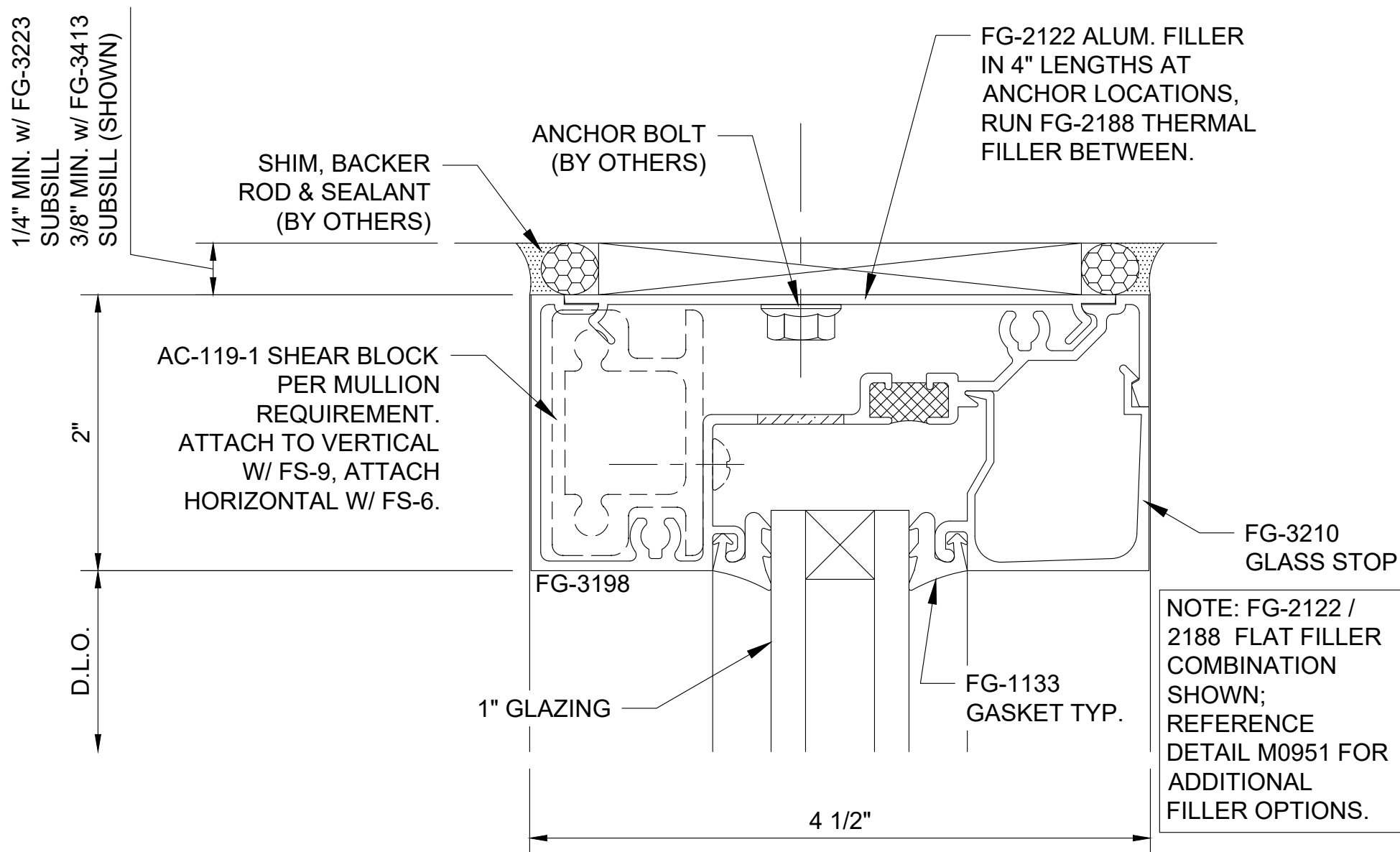


NOTE: HEAD RECEPTOR MAY ALSO BE USED WITH INSIDE GLAZED SYSTEM. IN THIS CASE, REVERSE MO-244 AND MO-678 INTERIOR TO EXTERIOR.

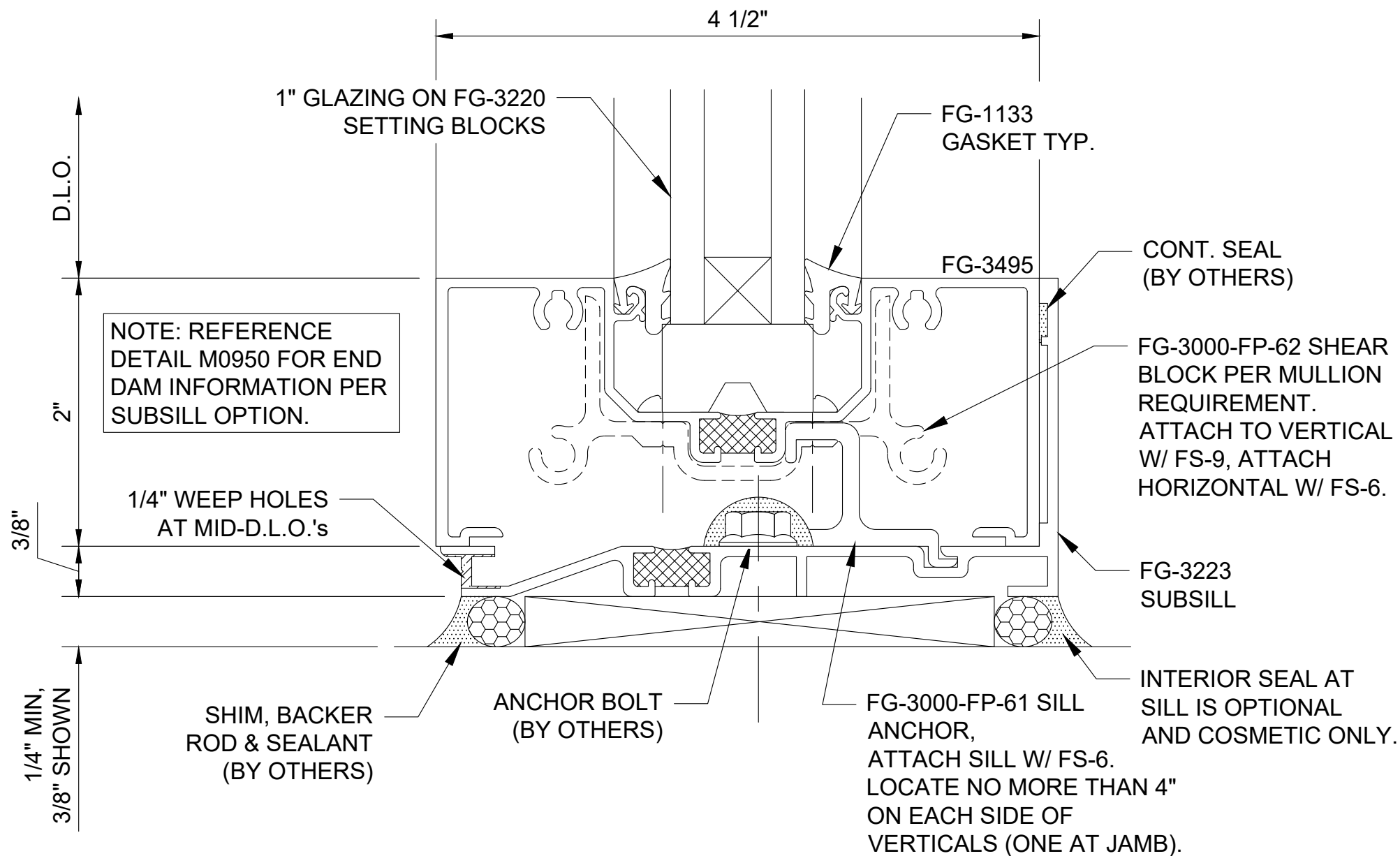
Series 3000 Thermal MultiPlane - Center Set Head w/ Receptor - H0912



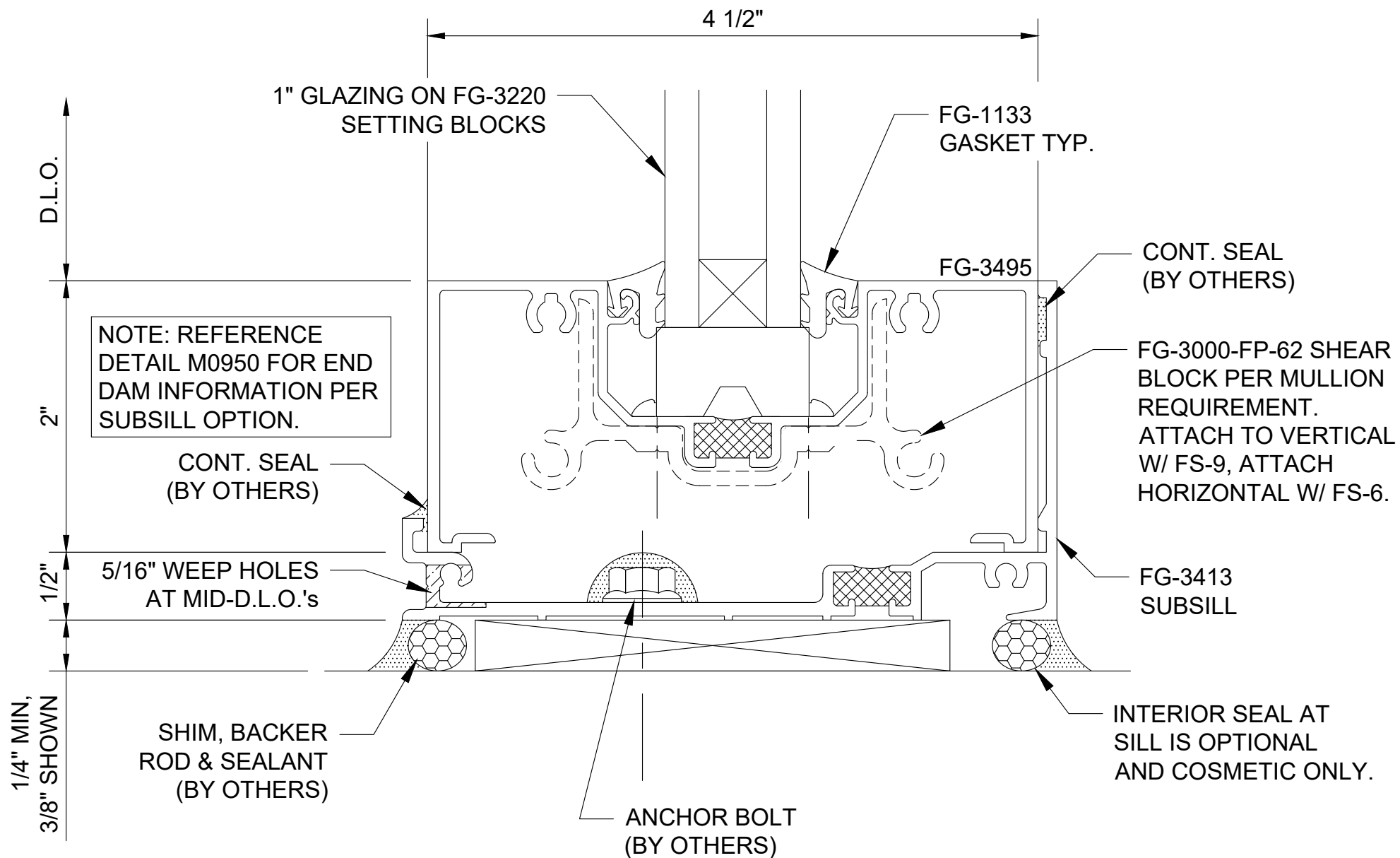
**Series 3000 Thermal MultiPlane - Center Set
Intermediate Horizontal - Inside Glazed - H0914**



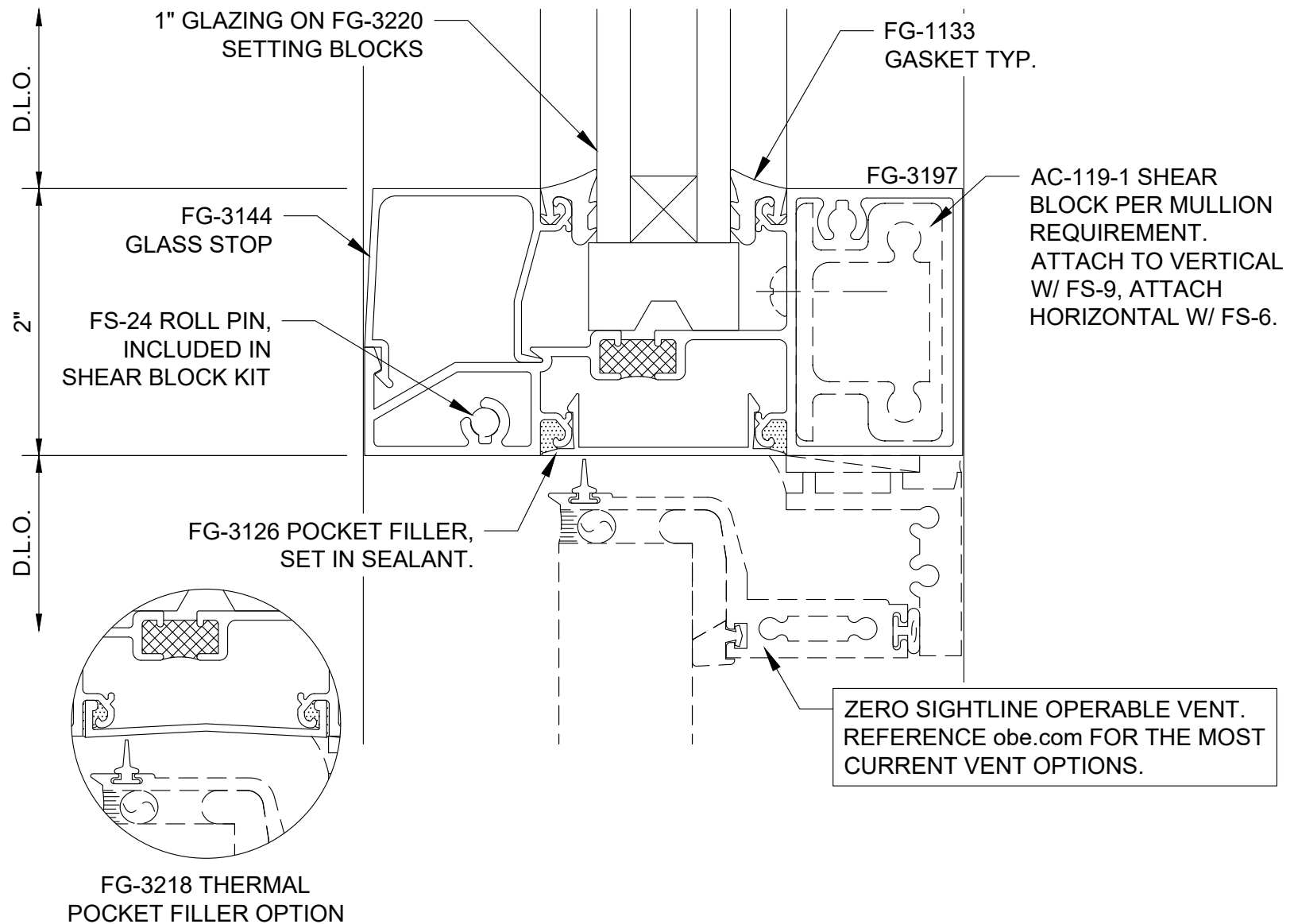
Series 3000 Thermal MultiPlane - Center Set Head - Inside Glazed - H0915



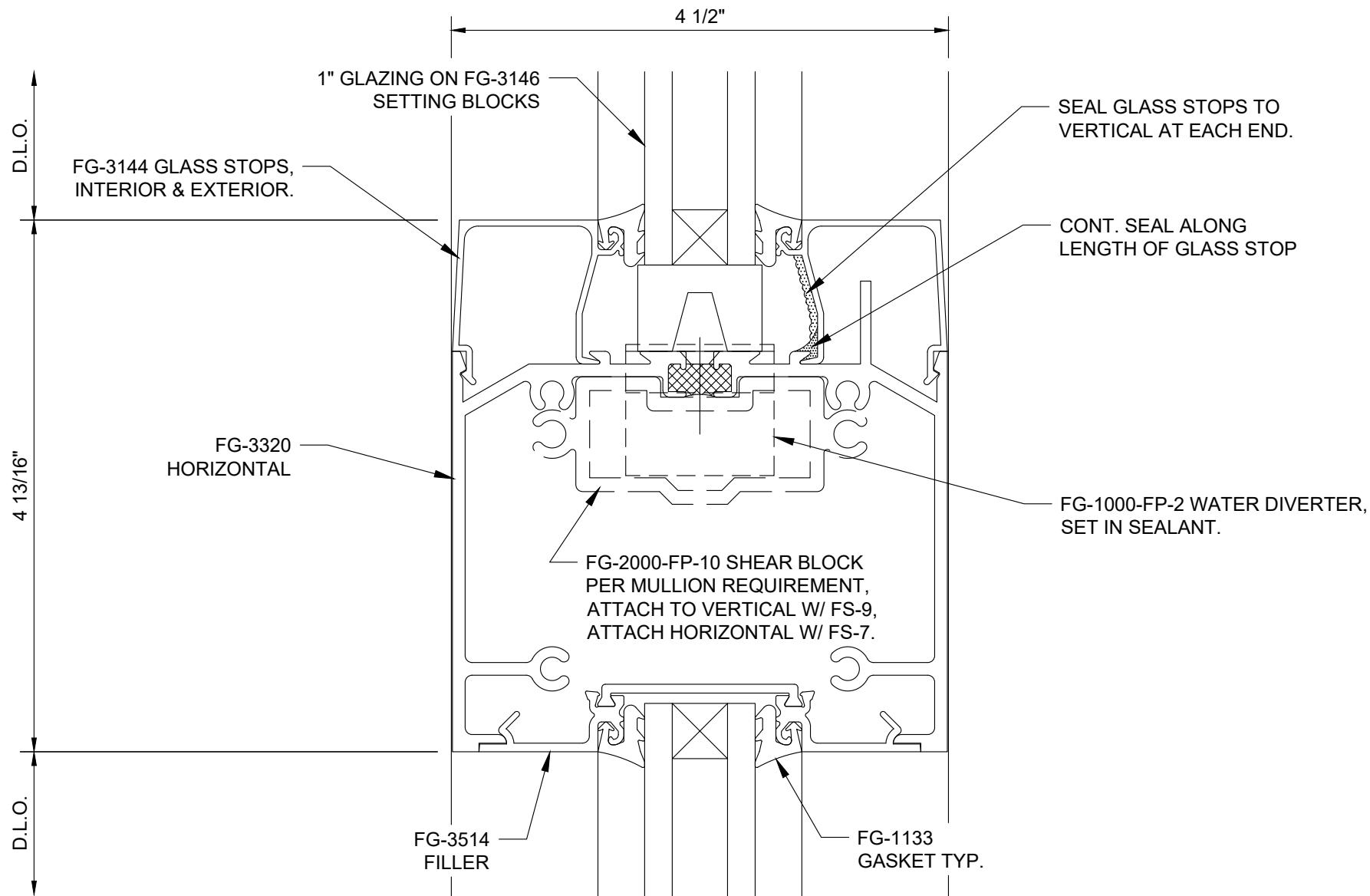
Series 3000 Thermal MultiPlane - Center Set Sill - Inside Glazed - H0916



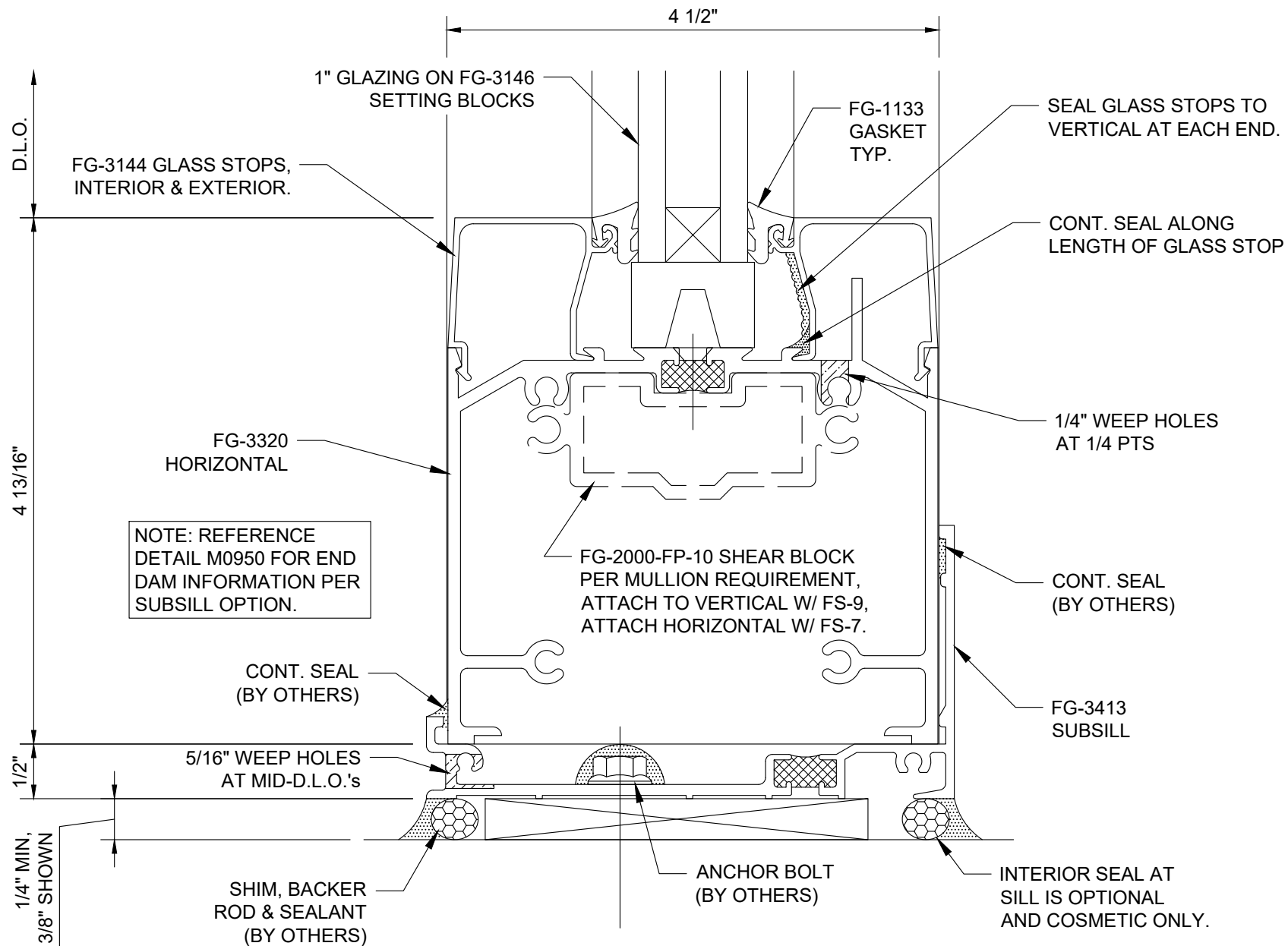
Series 3000 Thermal MultiPlane - Center Set Sill Option - Inside Glazed - H0917



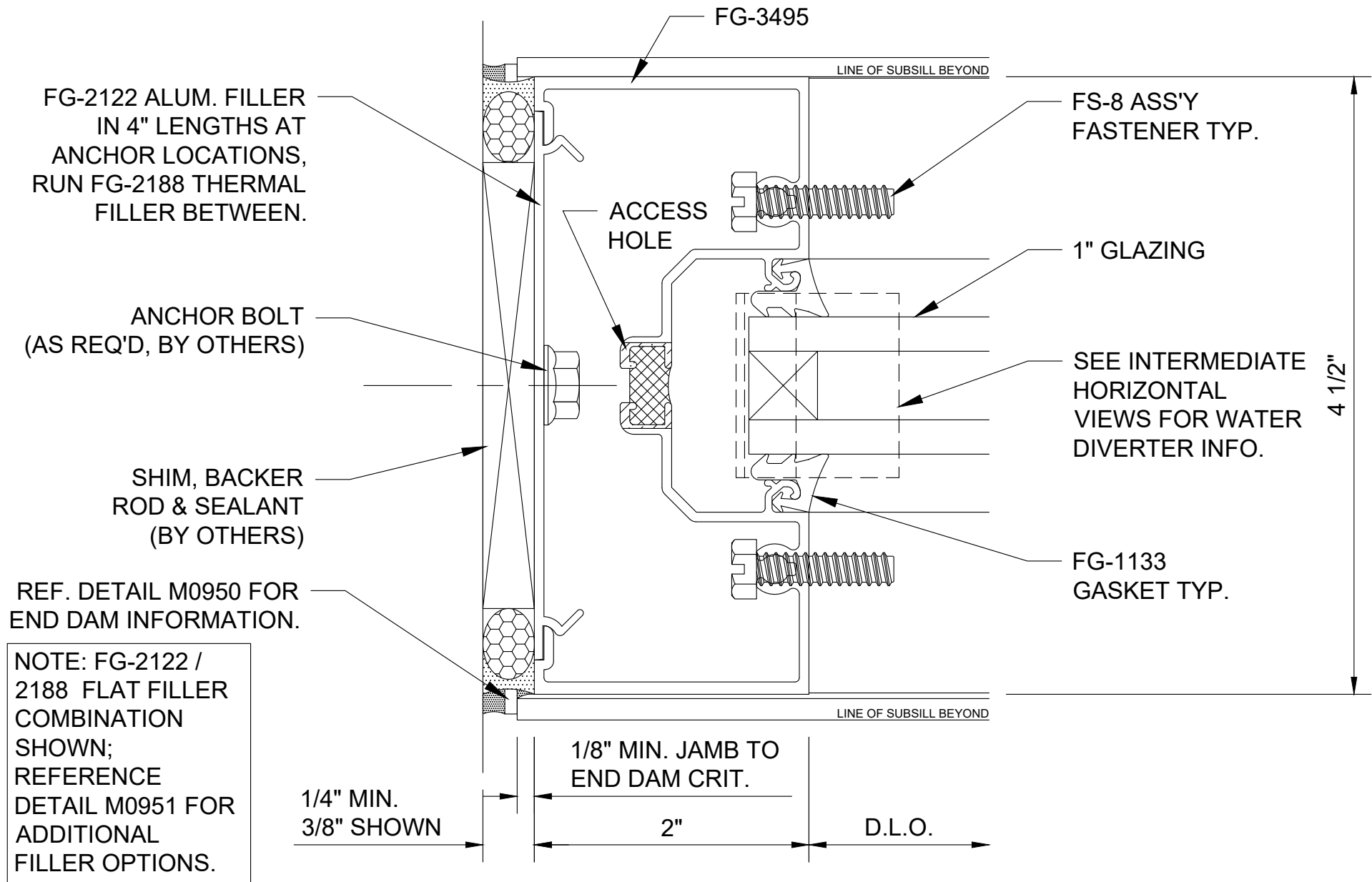
Series 3000 Thermal MultiPlane - Center Set Horizontal at Operable Window - H0919



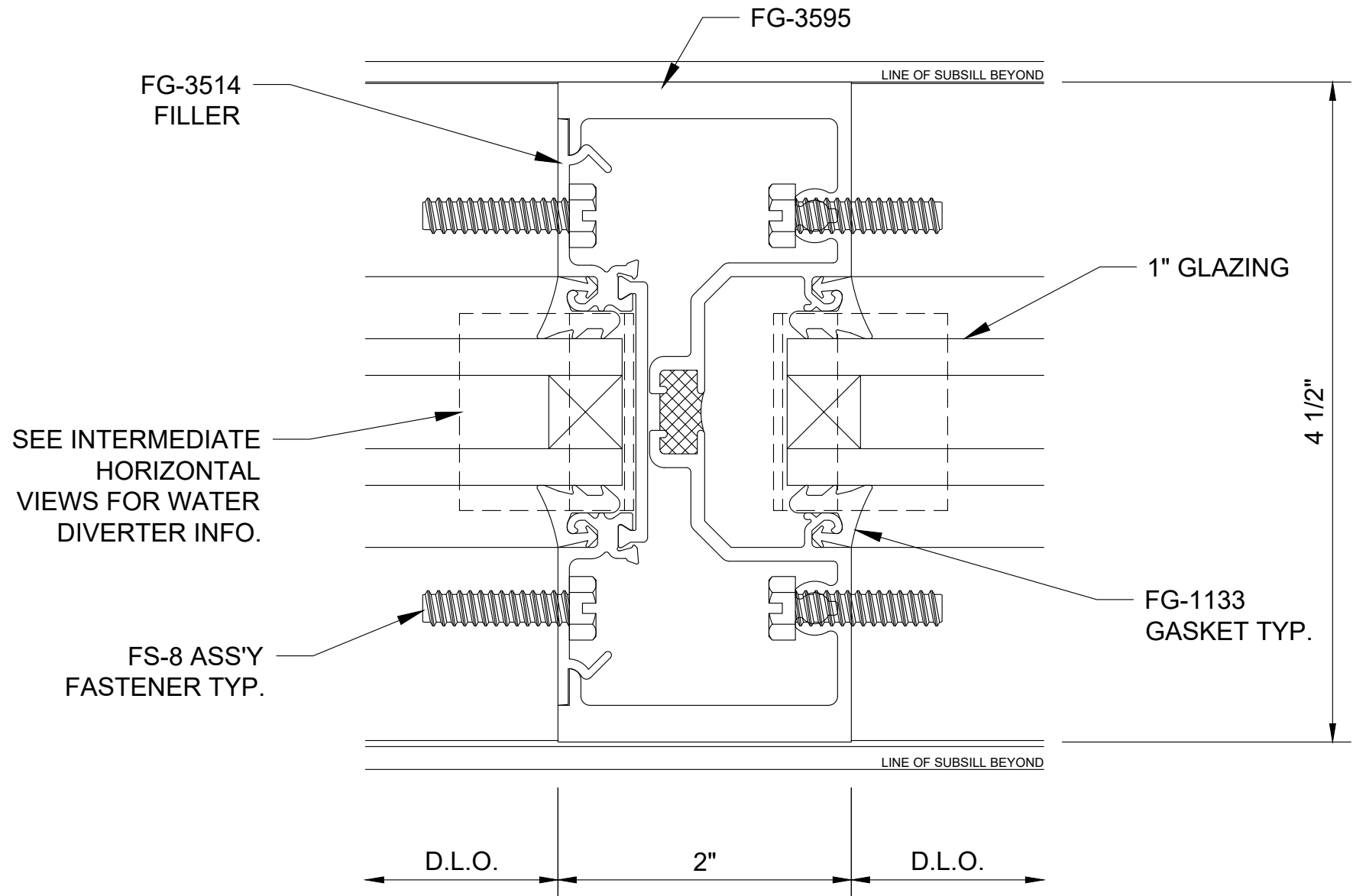
Series 3000 Thermal MultiPlane - Center Set Sidelite Base Horizontal - H0941



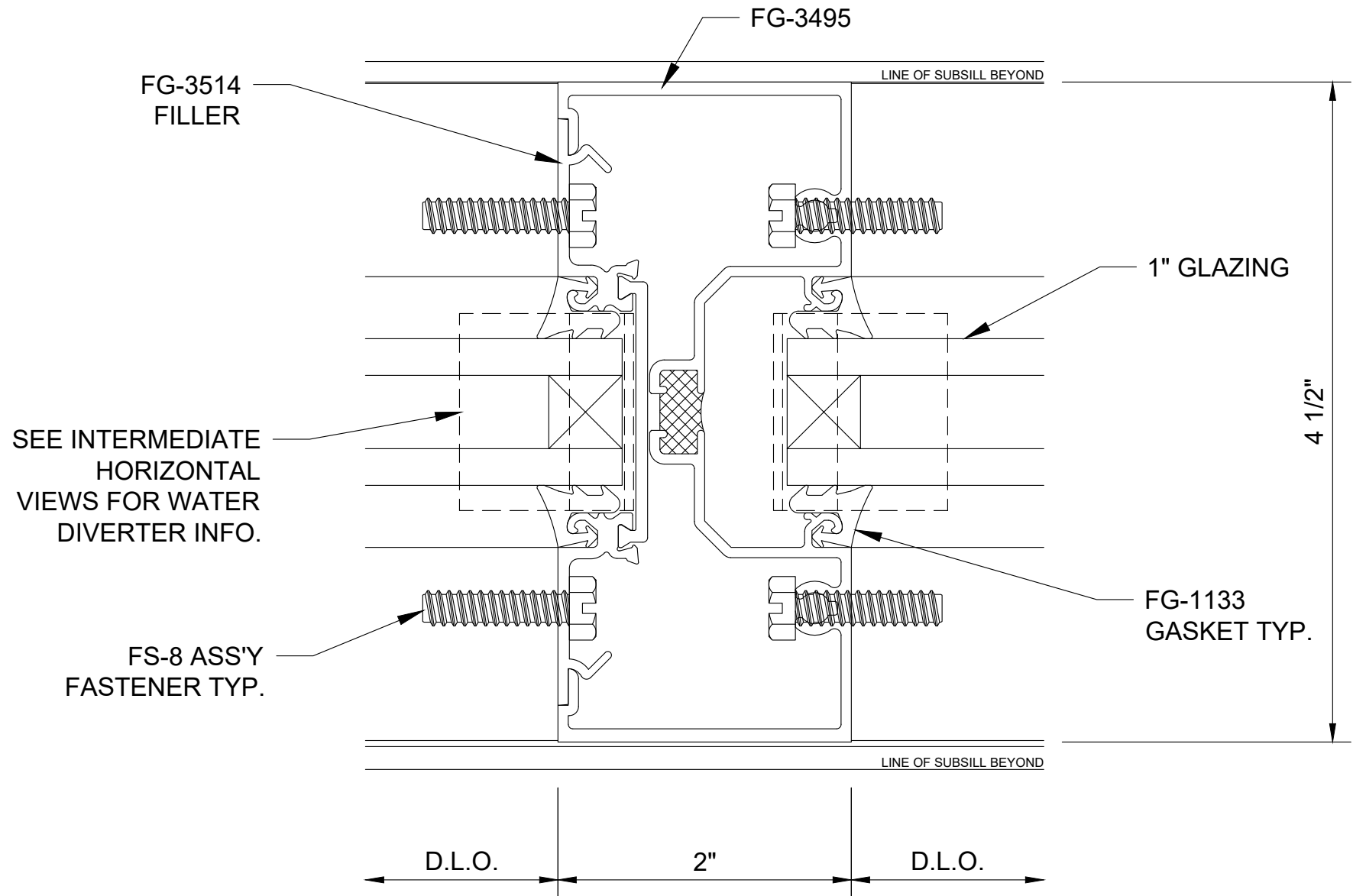
Series 3000 Thermal MultiPlane - Center Set Sidelite Base Sill - H0943



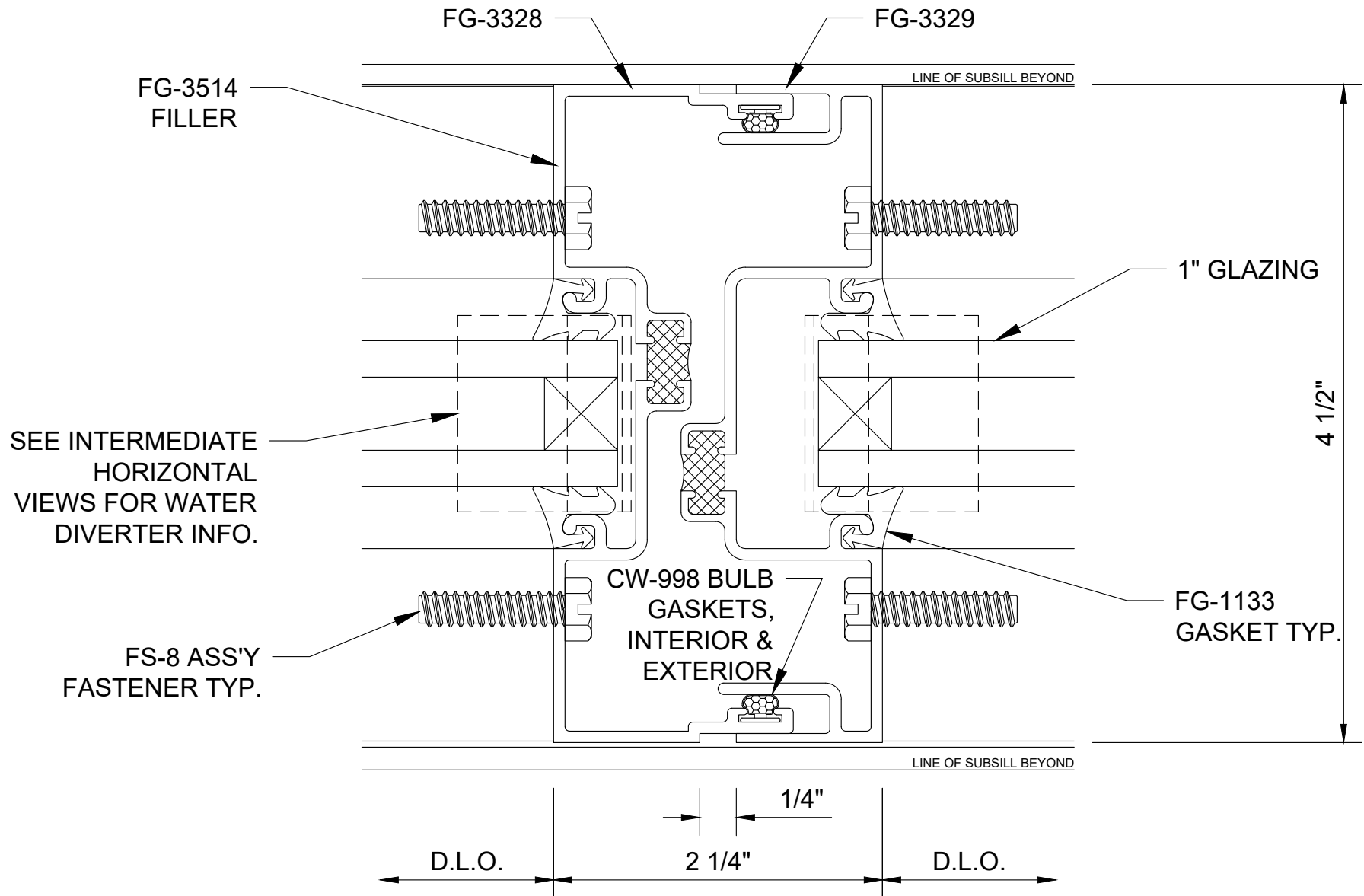
Series 3000 Thermal MultiPlane - Center Set Jamb - V0902



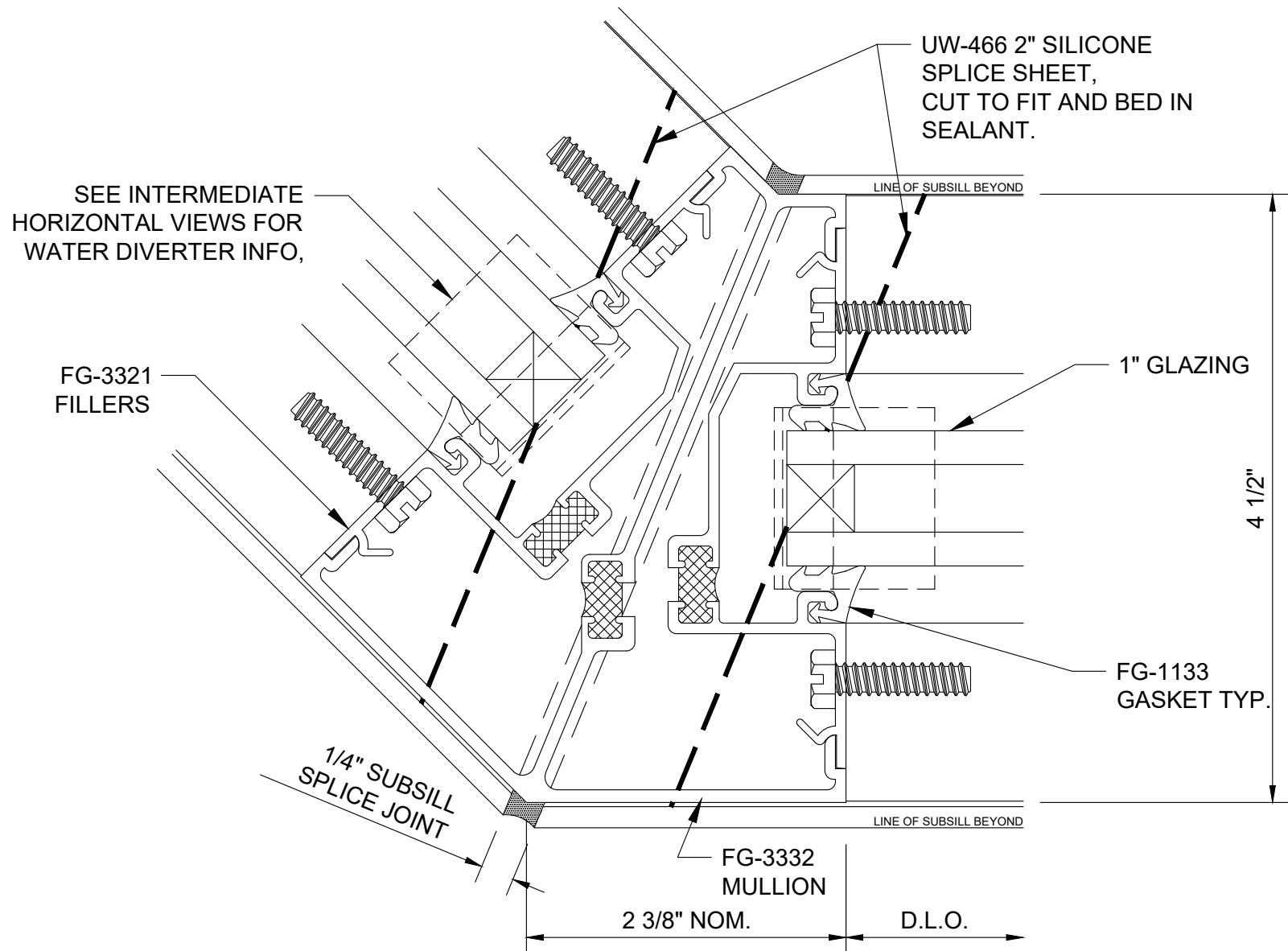
Series 3000 Thermal MultiPlane - Center Set Heavy Vertical - V0905



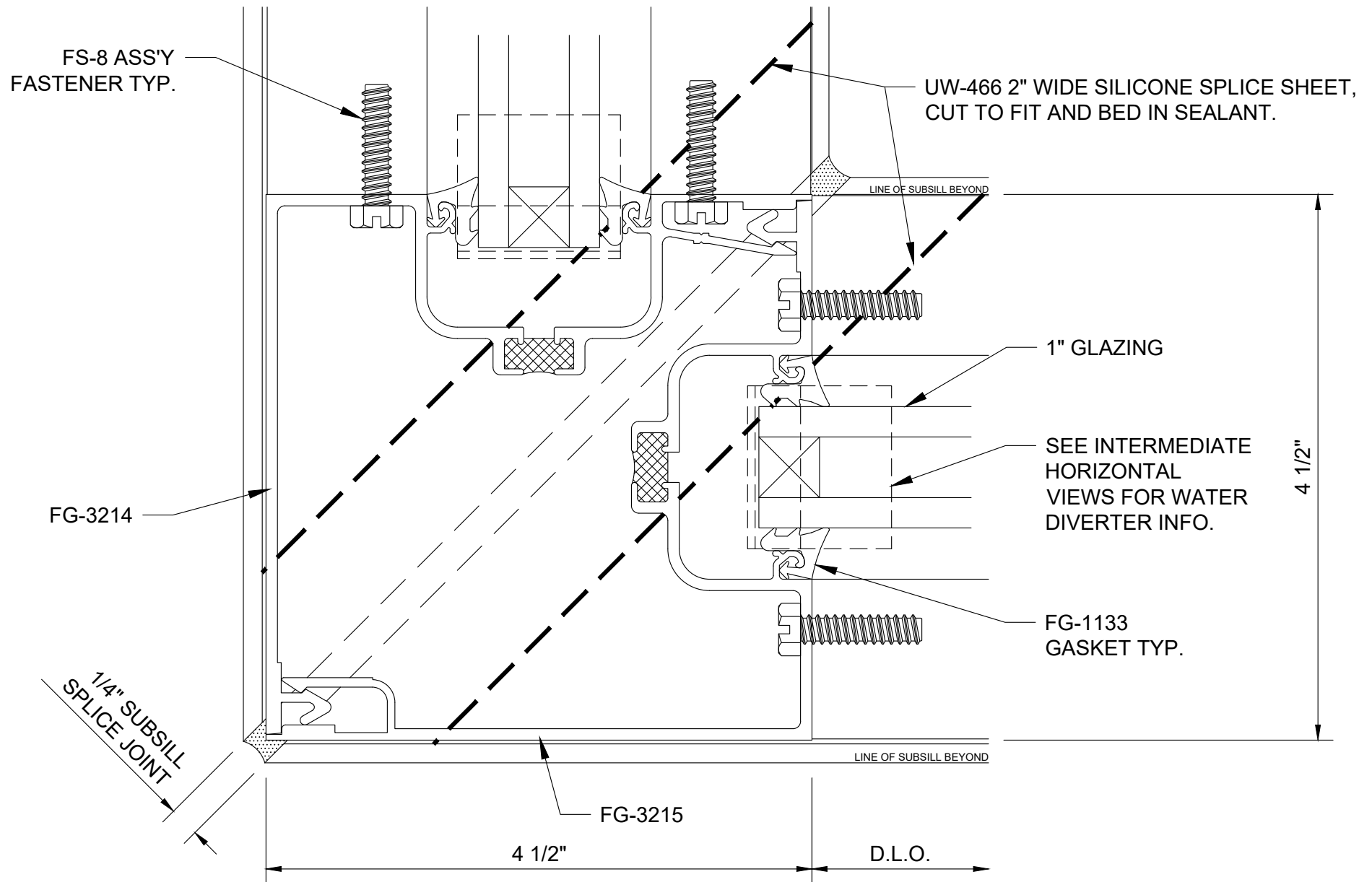
Series 3000 Thermal MultiPlane - Center Set Typical Vertical - V0906



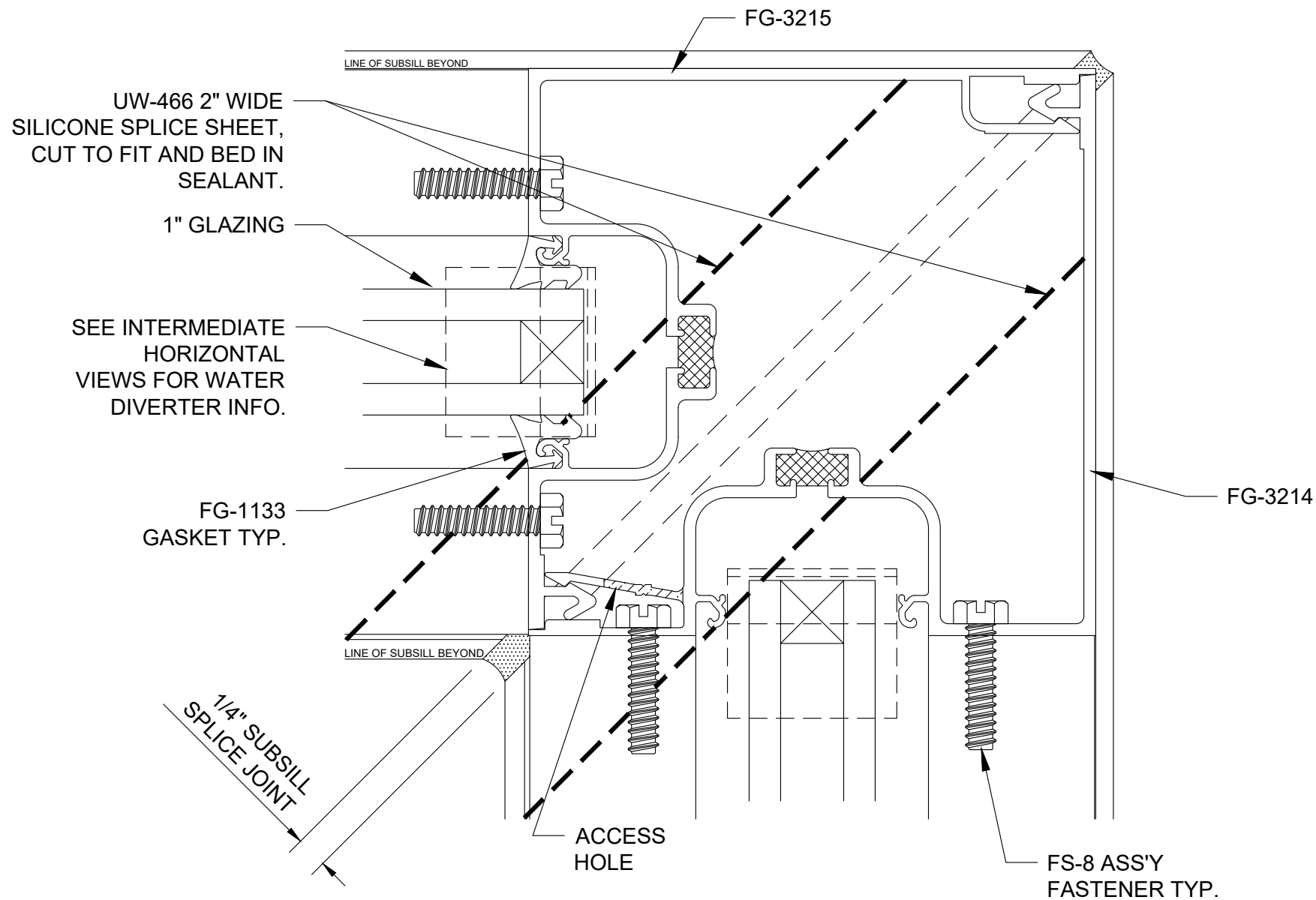
Series 3000 Thermal MultiPlane - Center Set Expansion Vertical - V0907



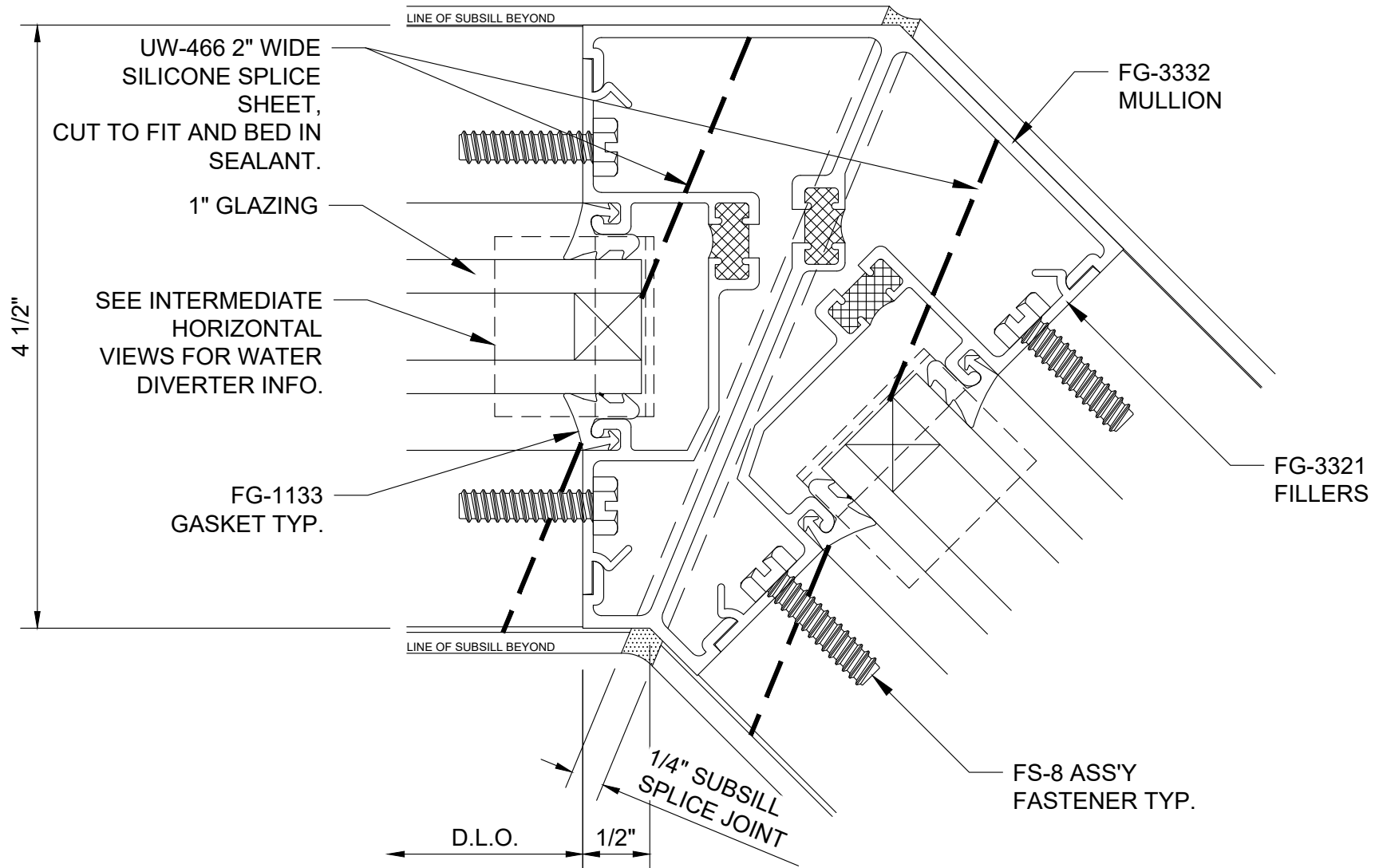
Series 3000 Thermal MultiPlane - Center Set 135° Outside Corner - V0910



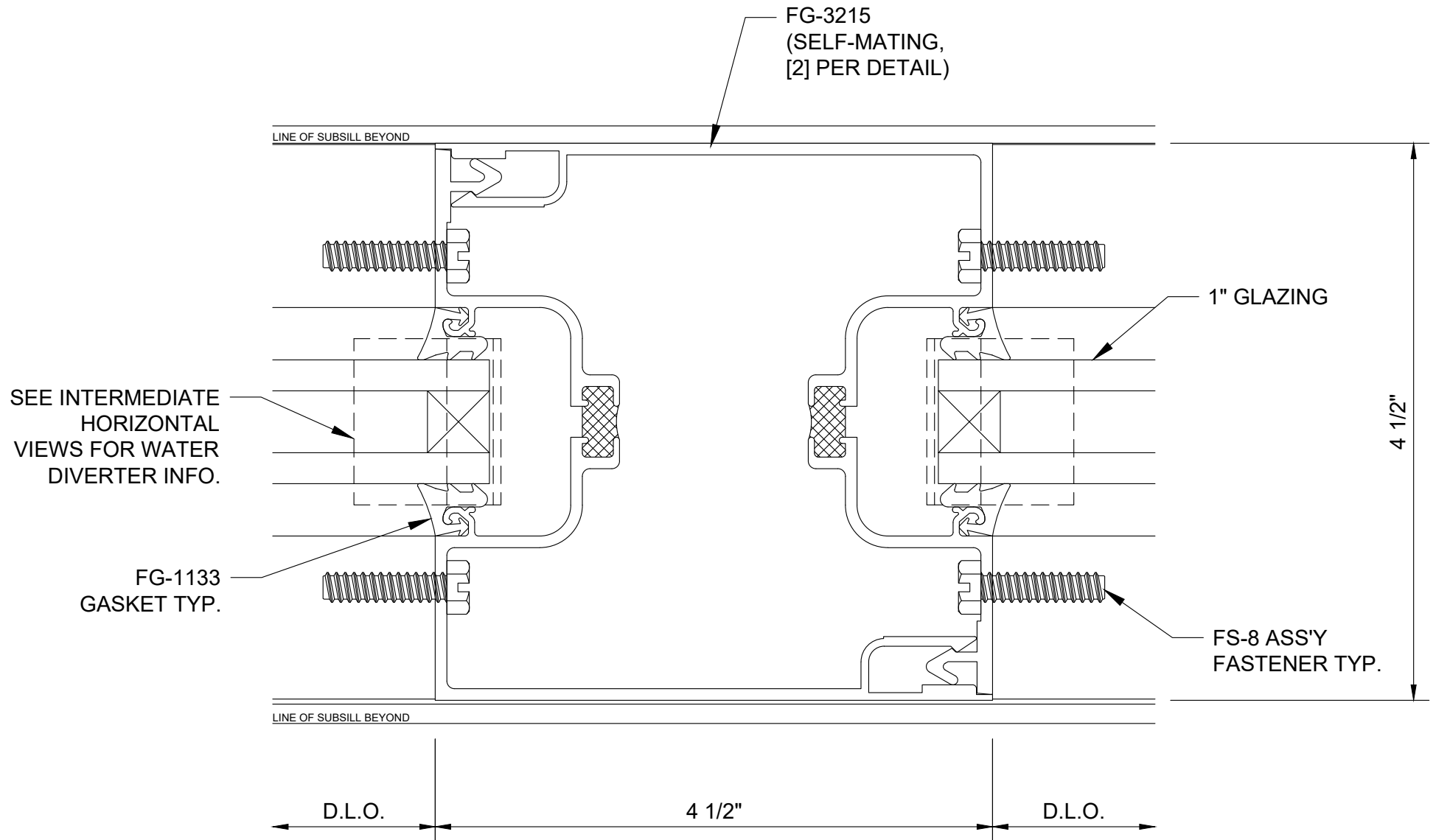
Series 3000 Thermal MultiPlane - Center Set
90° Outside Corner - V0911



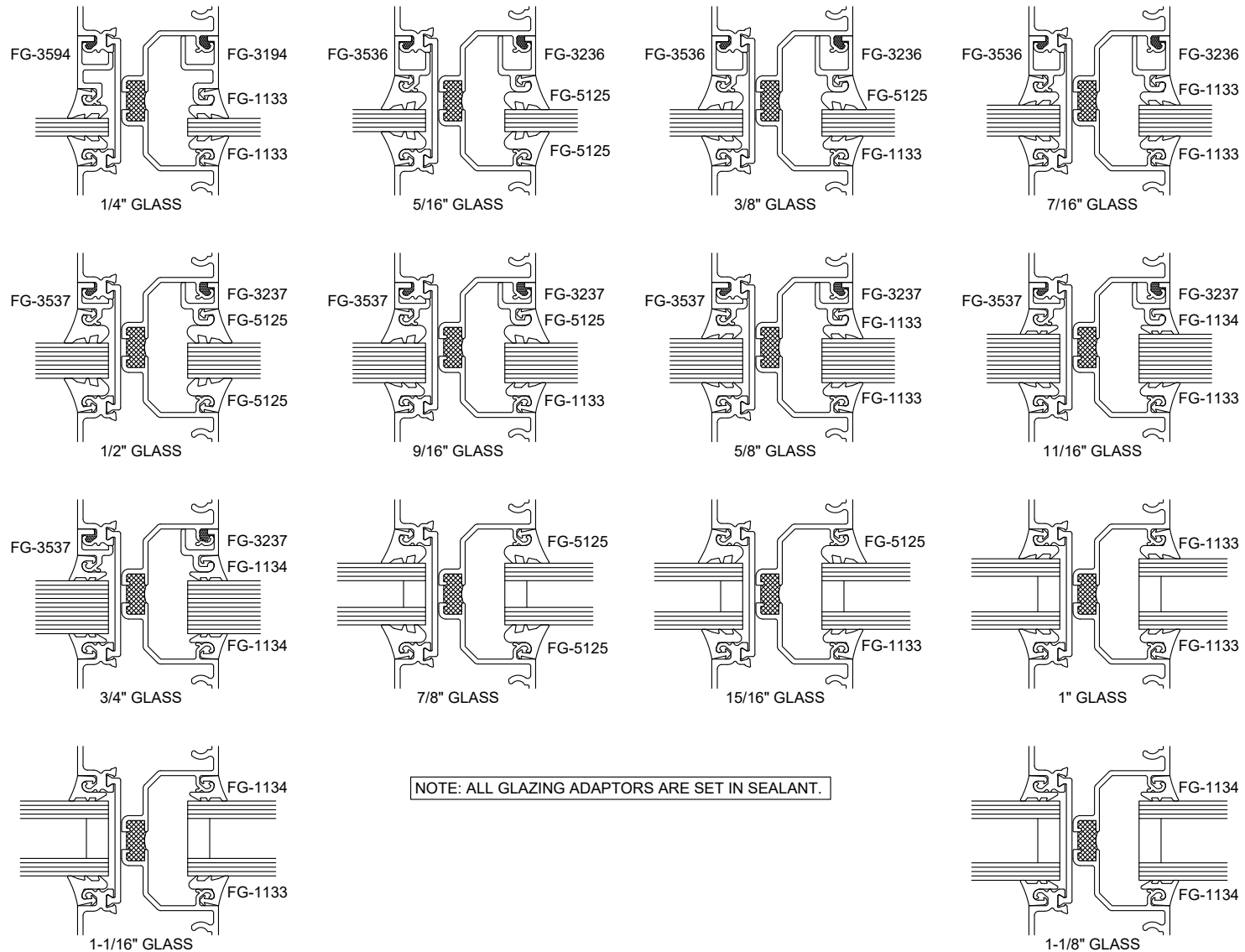
Series 3000 Thermal MultiPlane - Center Set 90° Inside Corner - V0912



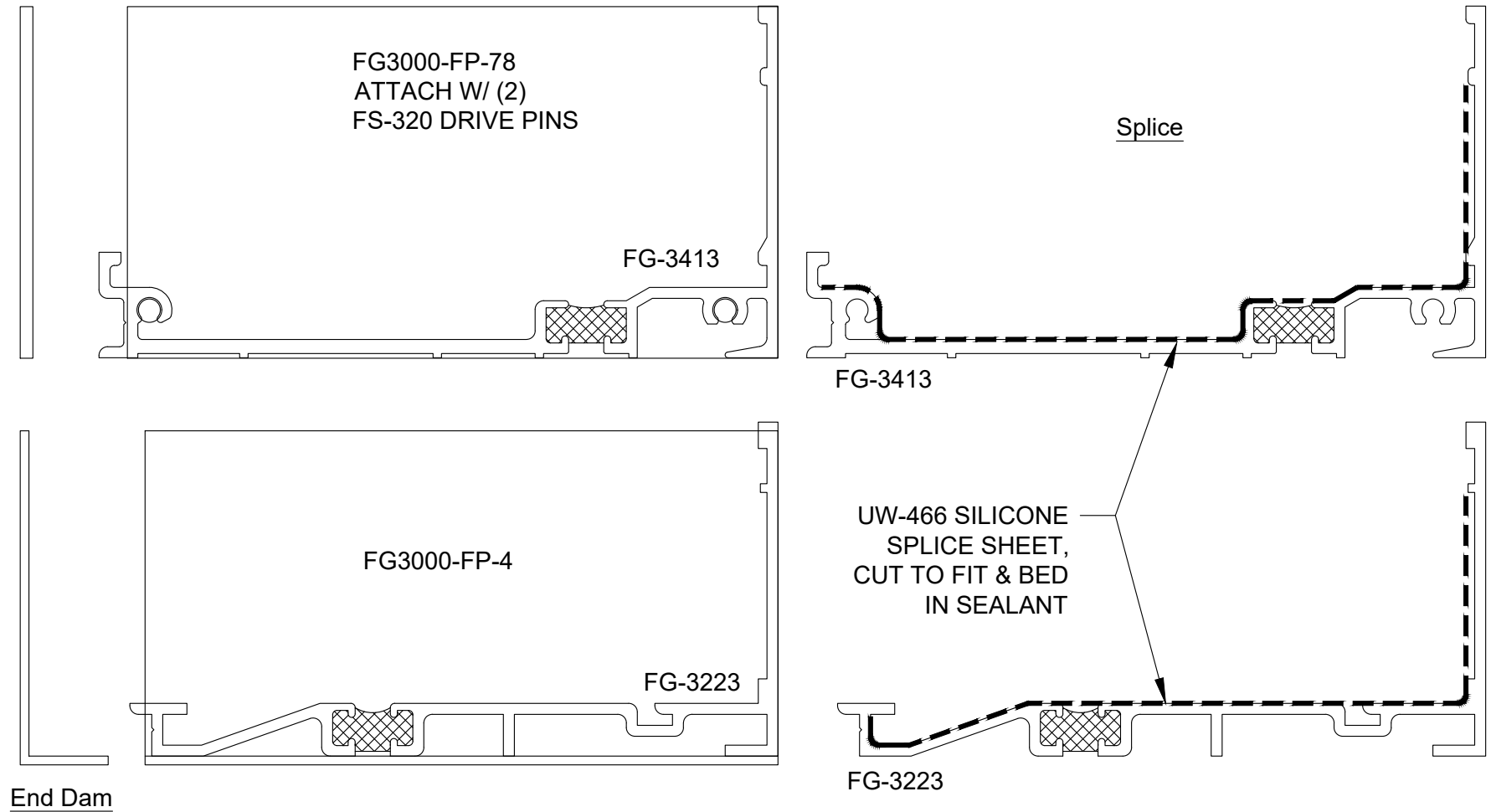
Series 3000 Thermal MultiPlane - Center Set 135° Inside Corner - V0914



Series 3000 Thermal MultiPlane - Center Set 180° Post - V0915

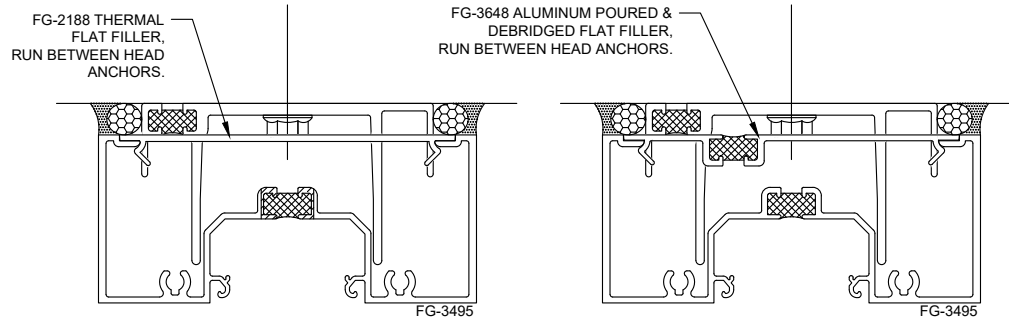


Series 3000/6000 Thermal MultiPlane - Center Set Glazing Options - M0948

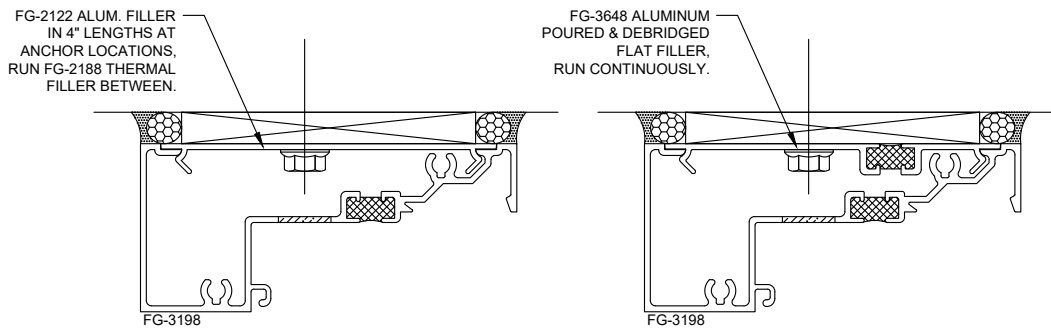


Note: Ref installation manual for additional splice & end dam info.

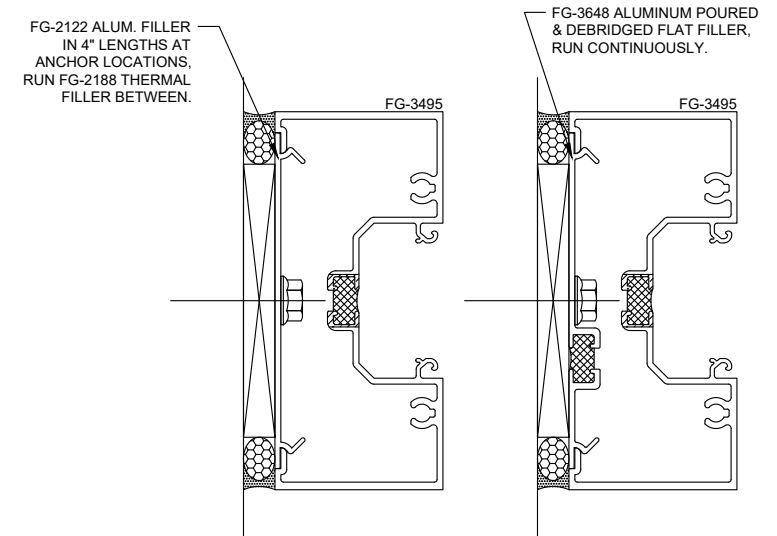
Series 3000 Thermal MultiPlane Subsill Splice & End Dam - M0950



OUTSIDE GLAZED HEAD



INSIDE GLAZED HEAD



JAMB

NOTE THAT IF JAMB IS UNANCHORED, FG-2188 THERMAL FILLER MAY BE RUN CONTINUOUSLY.

Series 3000 Thermal MultiPlane - Center Set Perimeter Filler Options - M0951