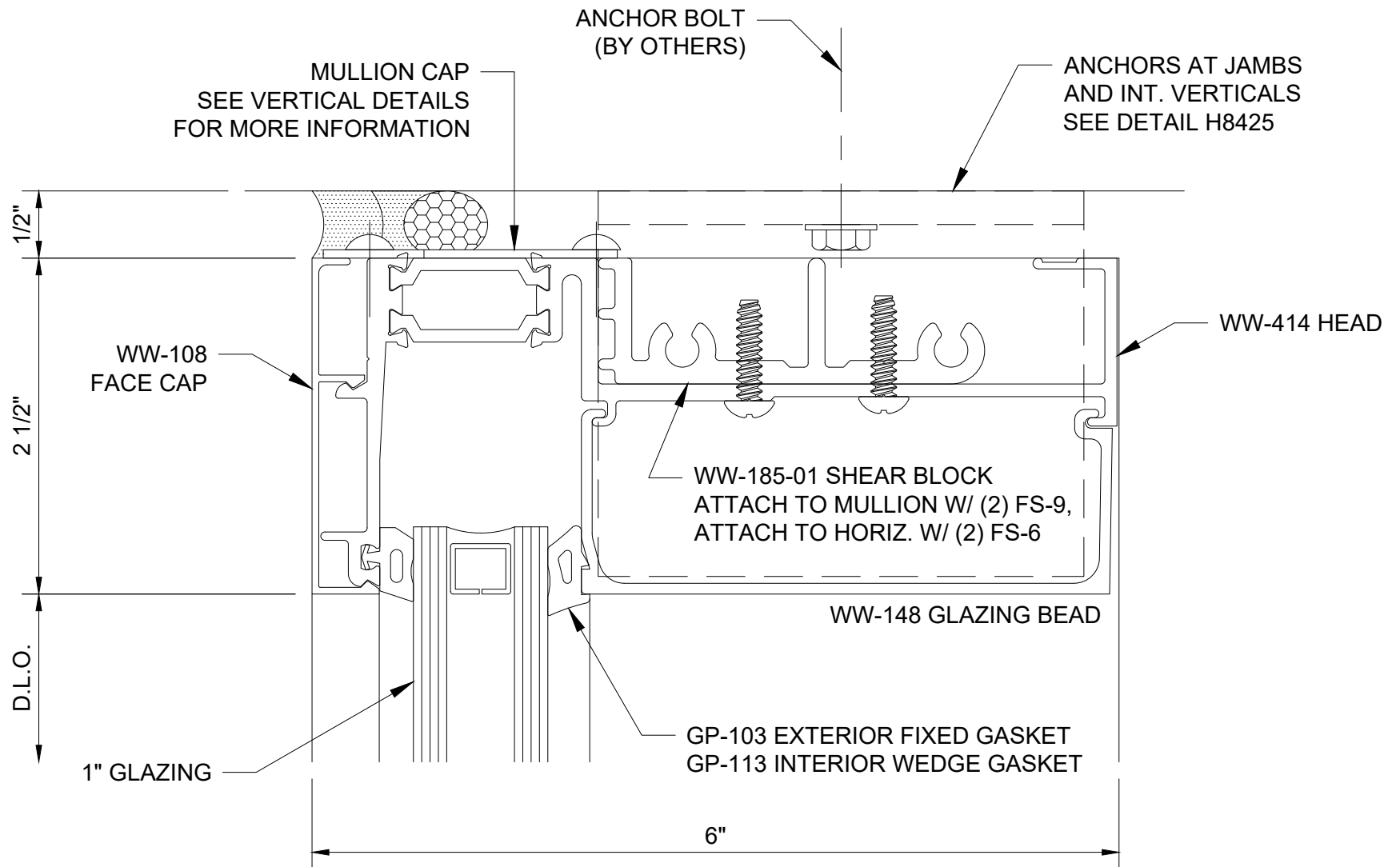
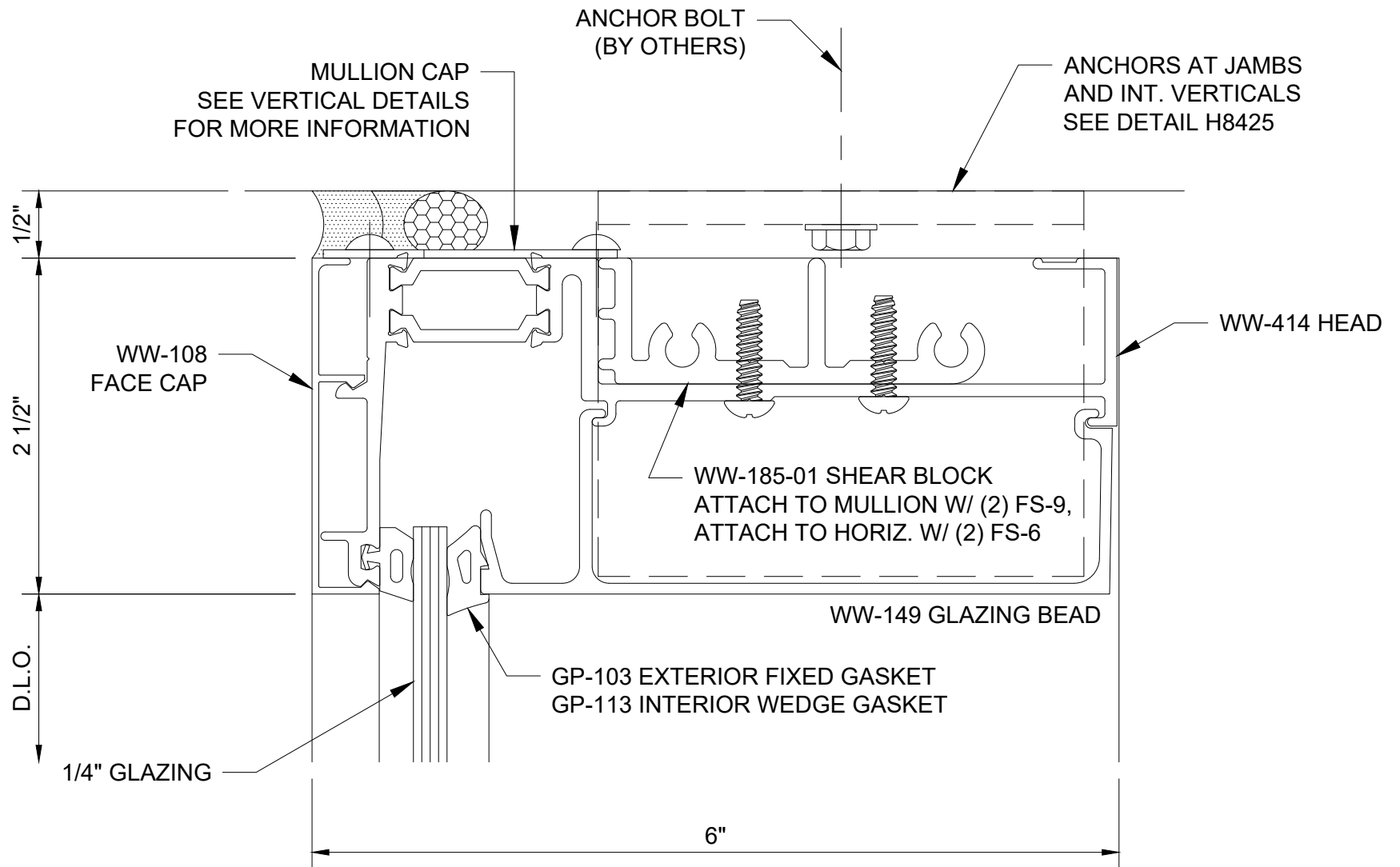


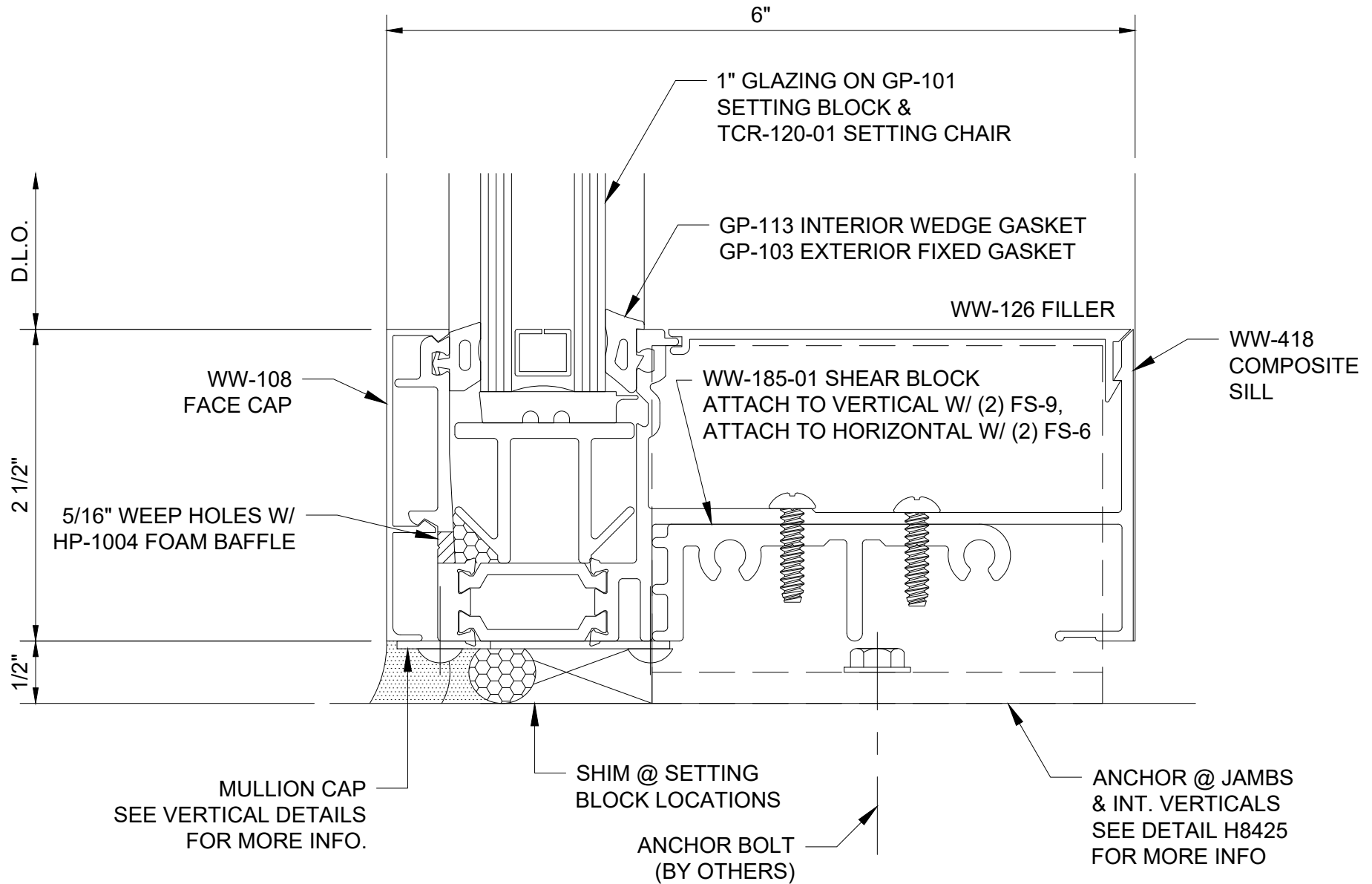
## Reliance™-TC IG - Thermal Composite Inside Glazed Curtain Wall 2-1/2" x 6" w/ 1" Glazing - Elevation



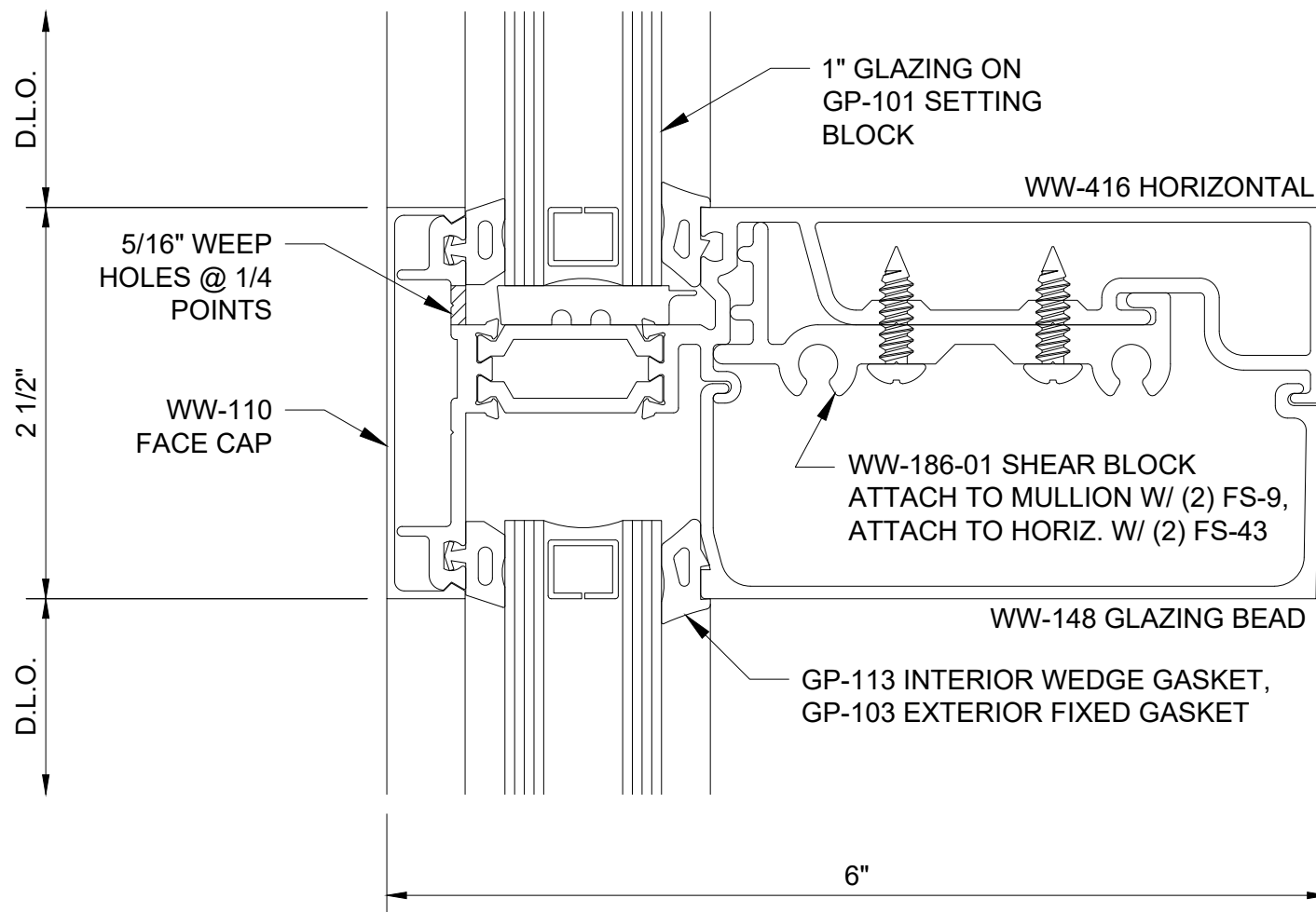
## Reliance™-TC IG Head at Vision - H8501



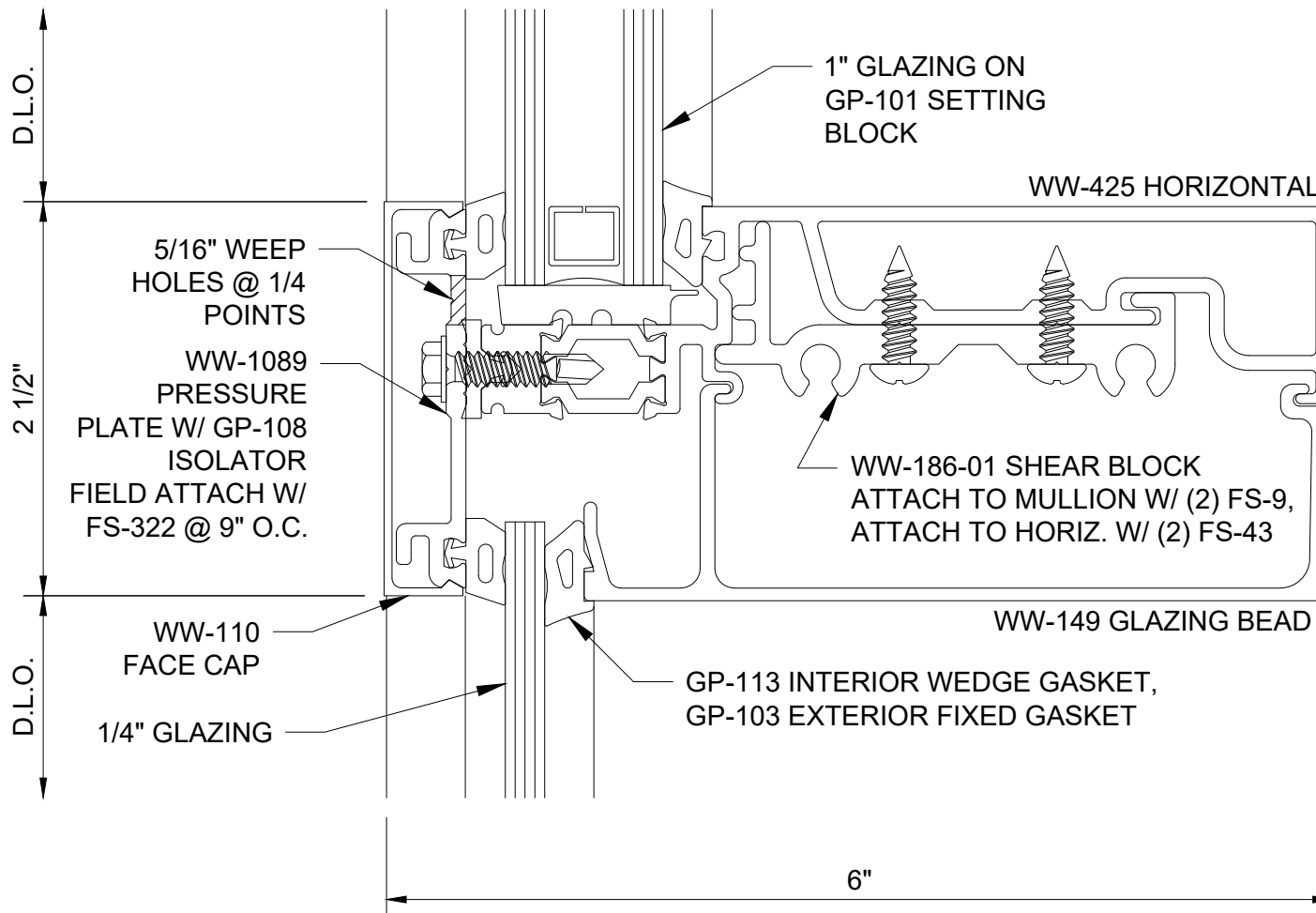
## Reliance™-TC IG Head at Spandrel - H8502



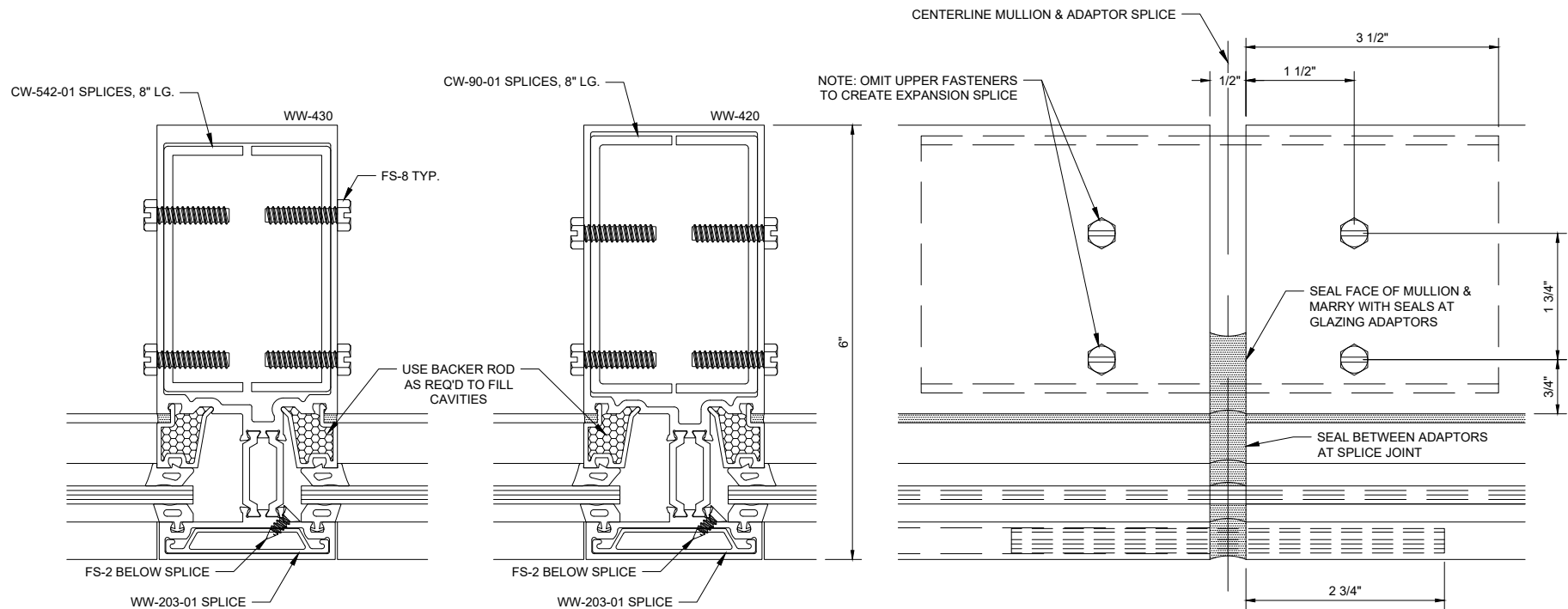
## Reliance™-TC IG Sill - H8504



## Reliance™-TC IG Intermediate Horizontal - H8505

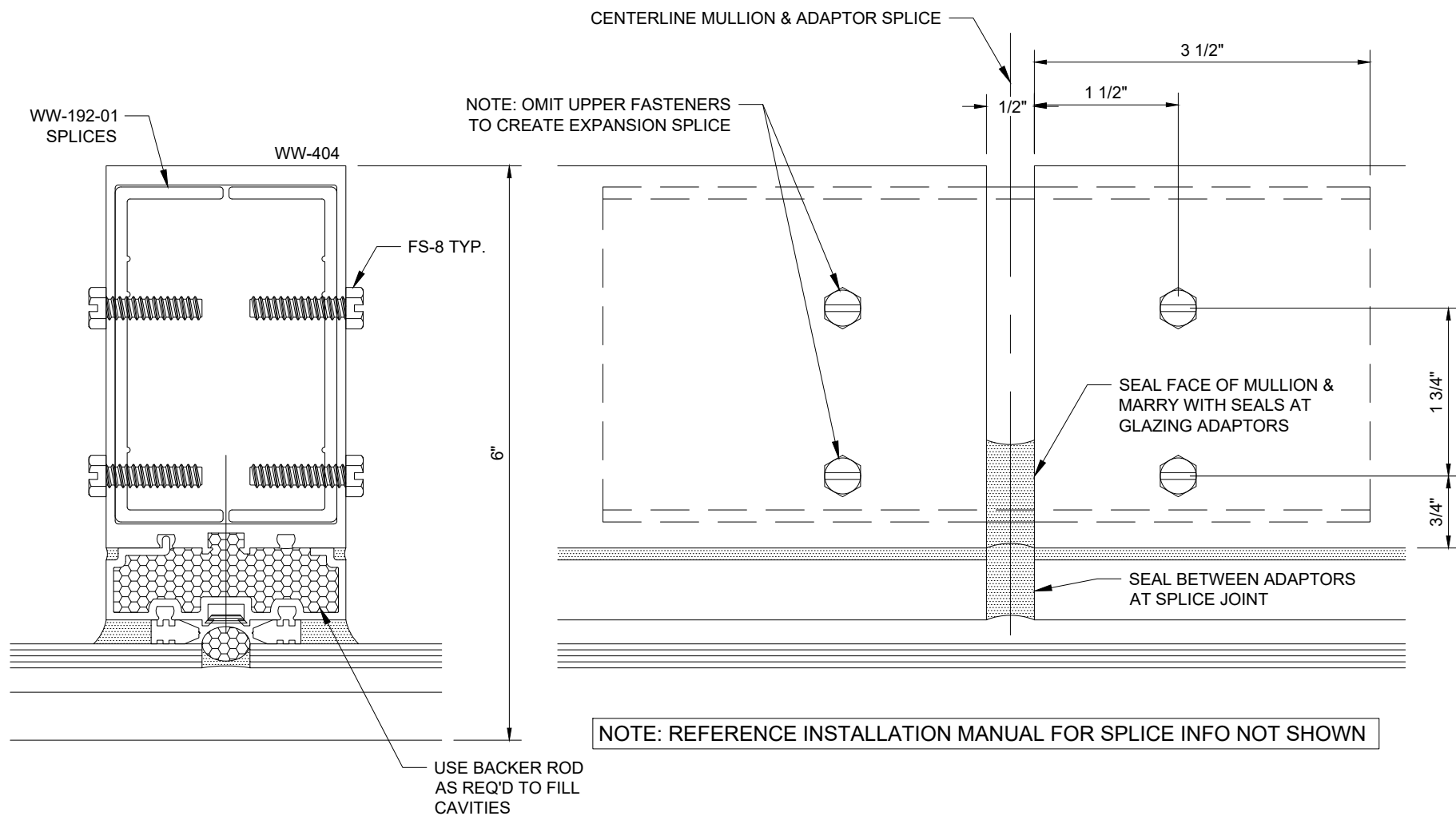


## Reliance™-TC IG Intermediate Horizontal at Vision Over Spandrel - H8511



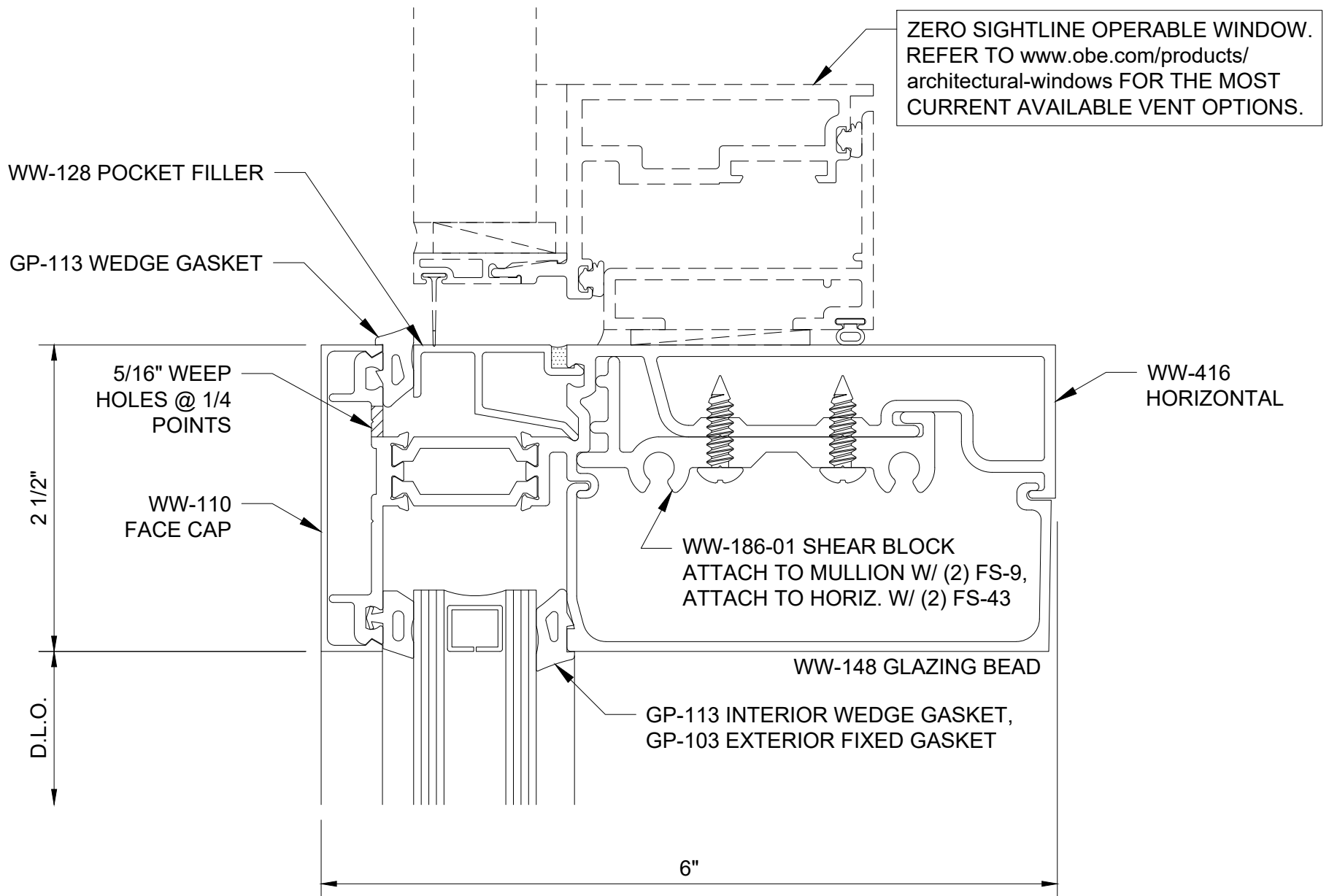
NOTE: REFERENCE INSTALLATION MANUAL FOR SPLICE INFO NOT SHOWN

## Reliance™-TC IG Captured Vertical - Mullion Splice - H8514

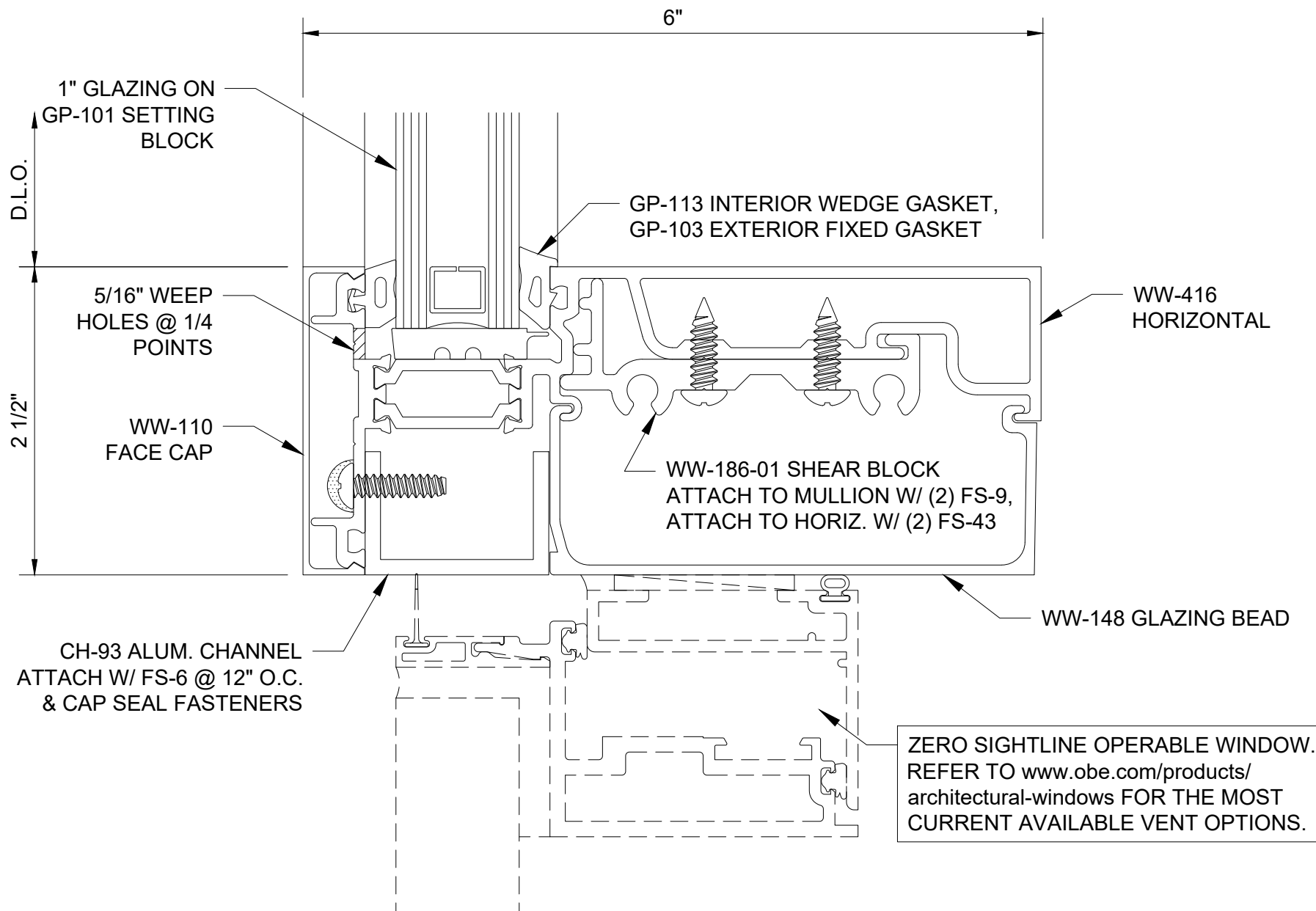


## Reliance™-TC IG SSG Vertical - Mullion Splice - H8515



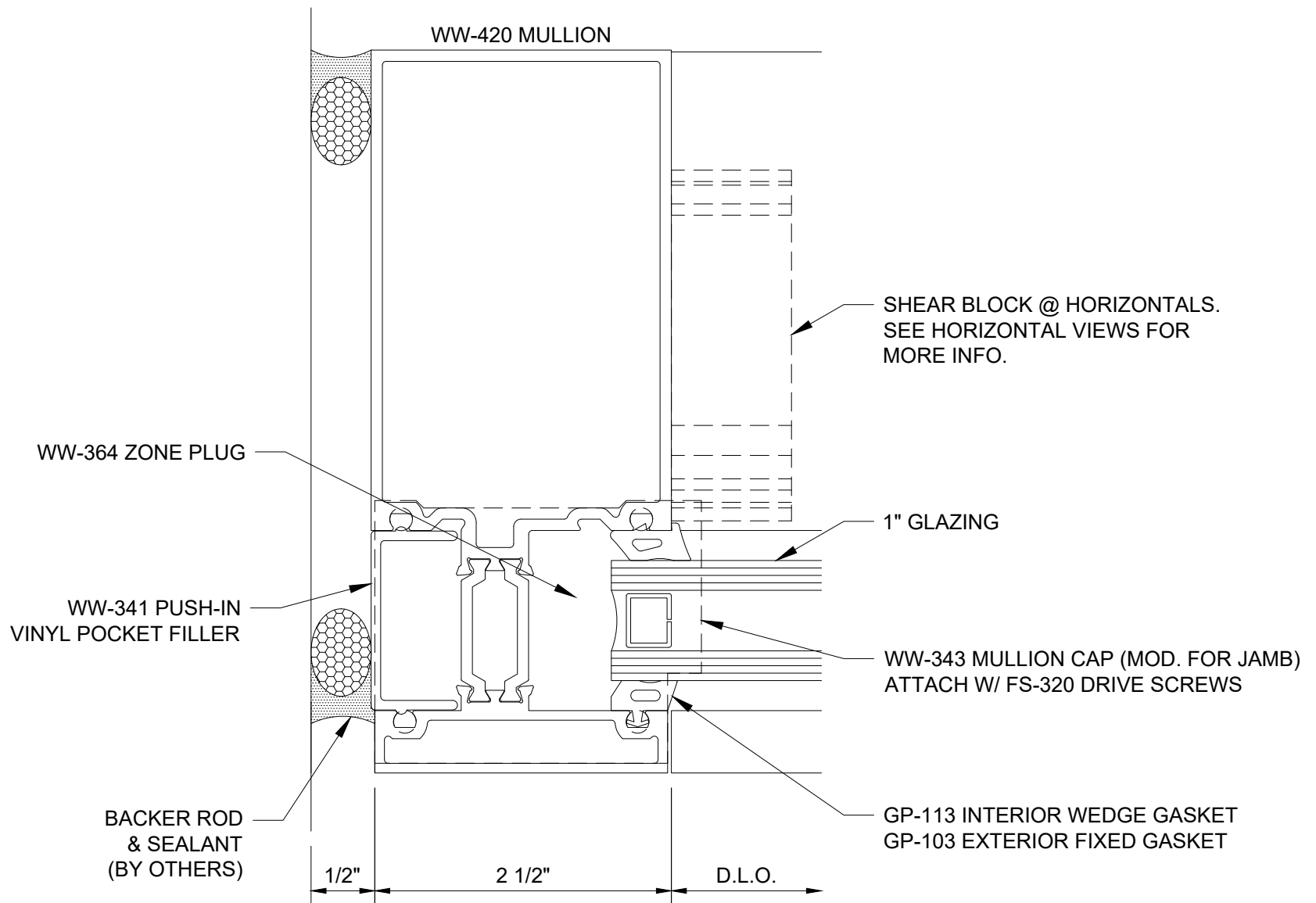


## Reliance™-TC IG Horizontal at Operable Window - H8594

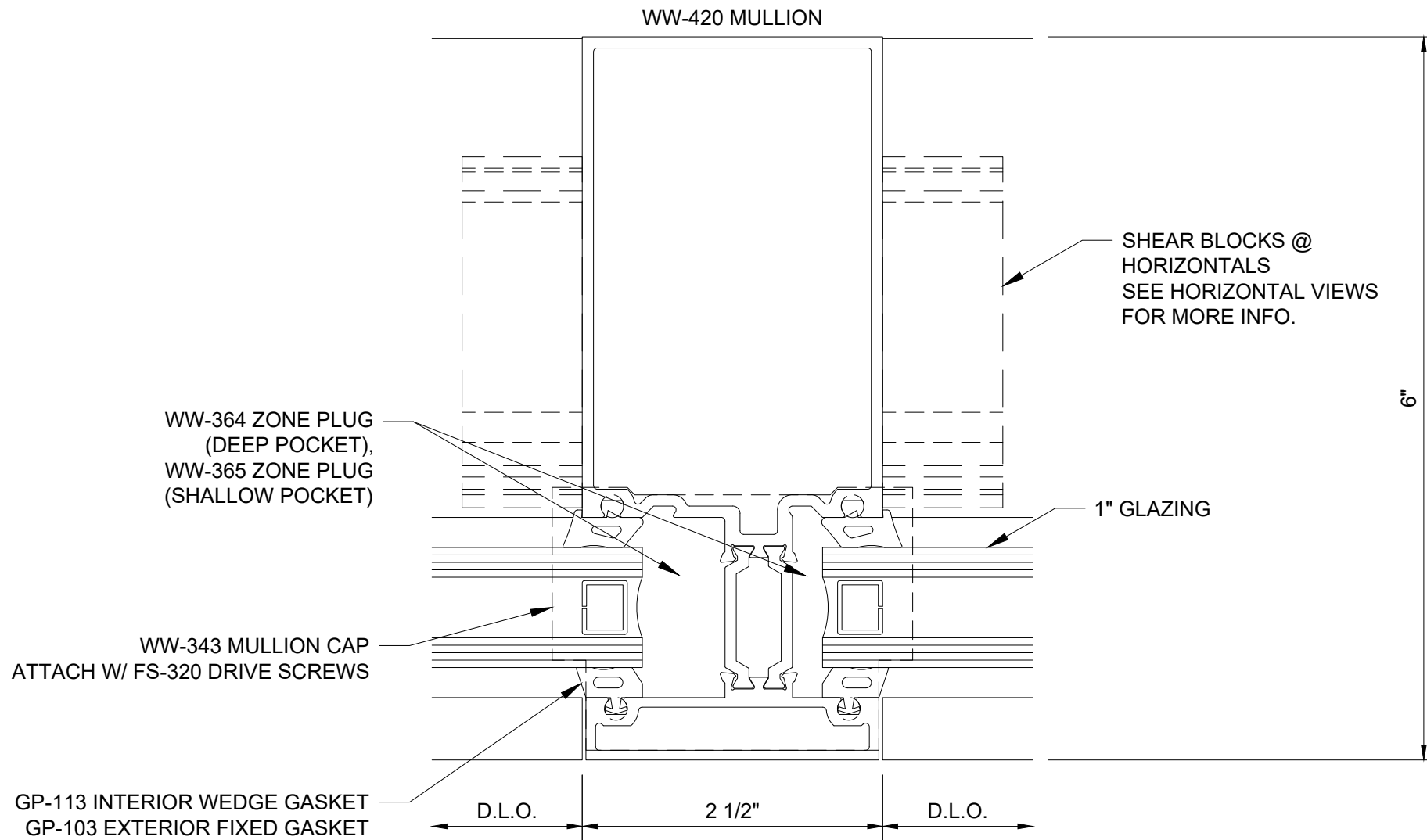


## Reliance™-TC IG

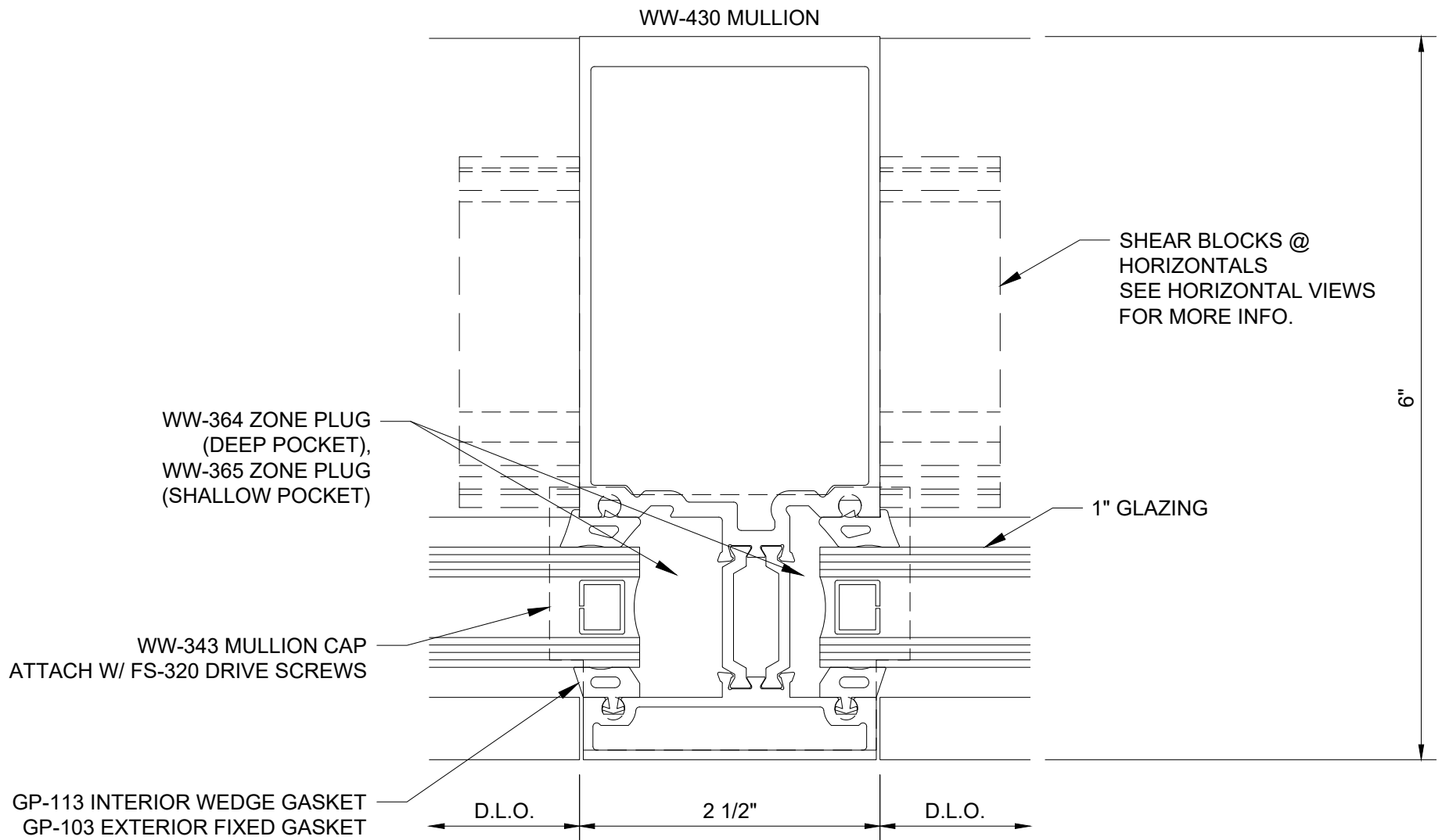
### Horizontal at Operable Window - H8596



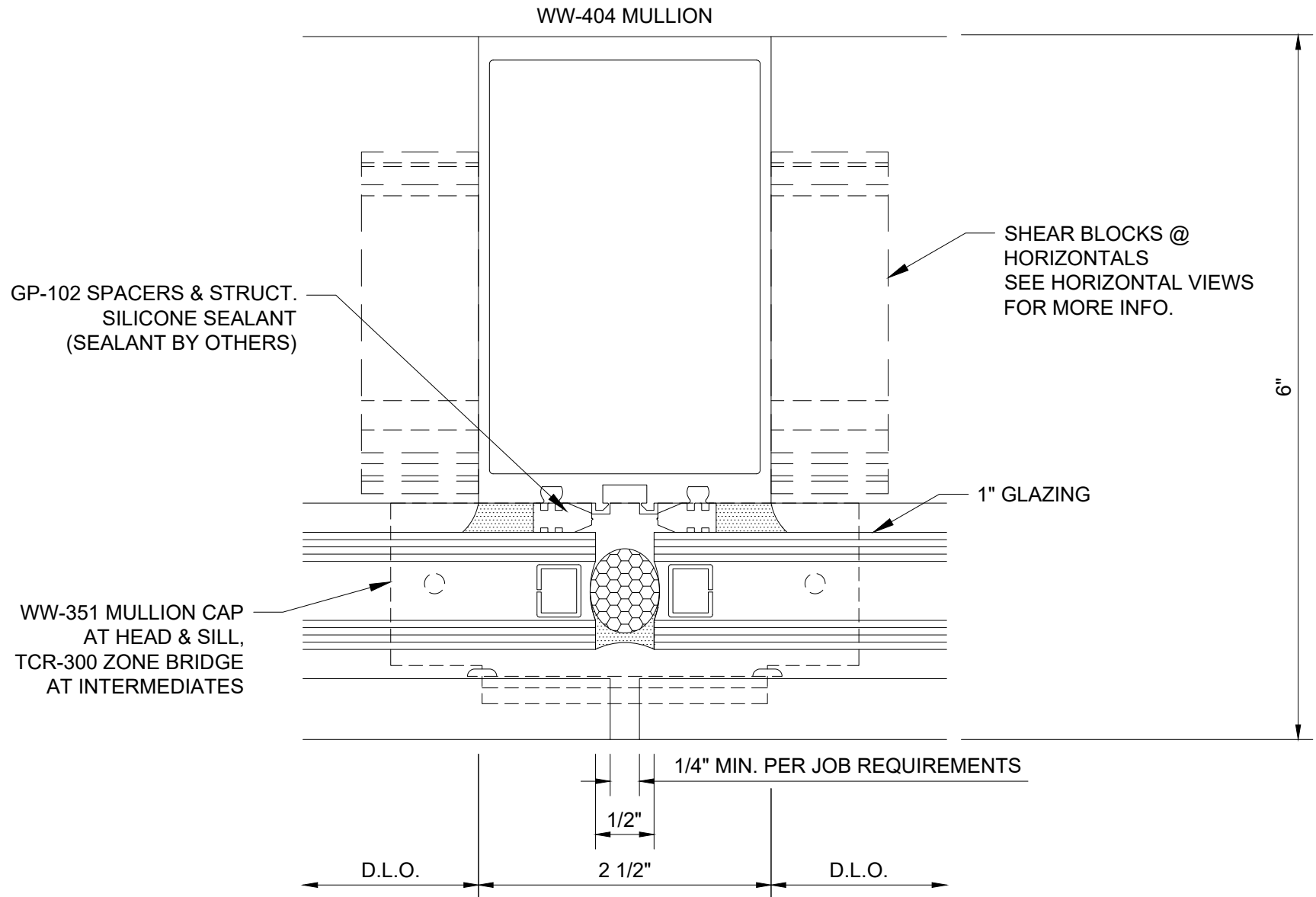
**Reliance™-TC IG**  
**Jamb - V8501**



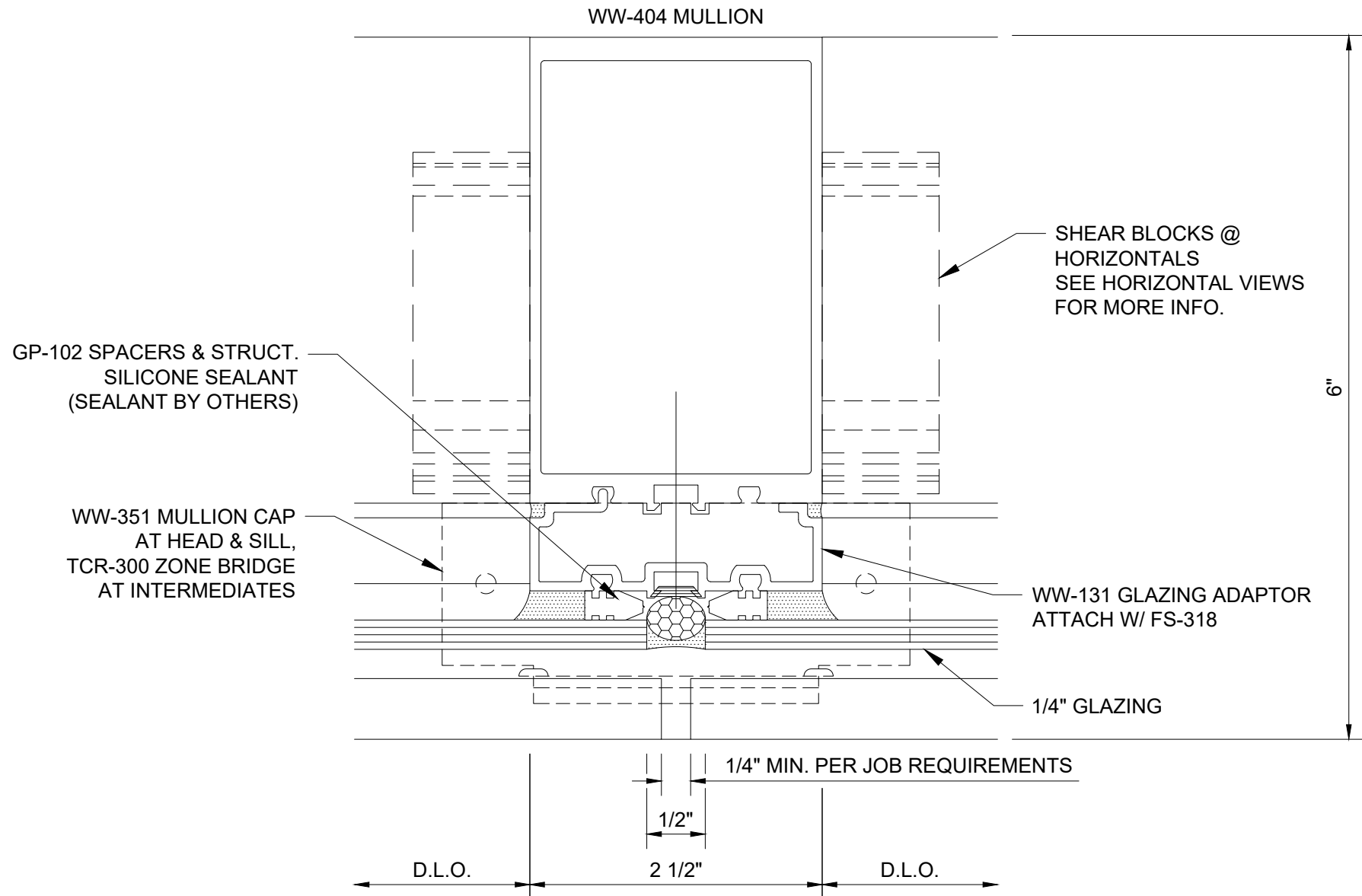
## Reliance™-TC IG Vertical - V8502



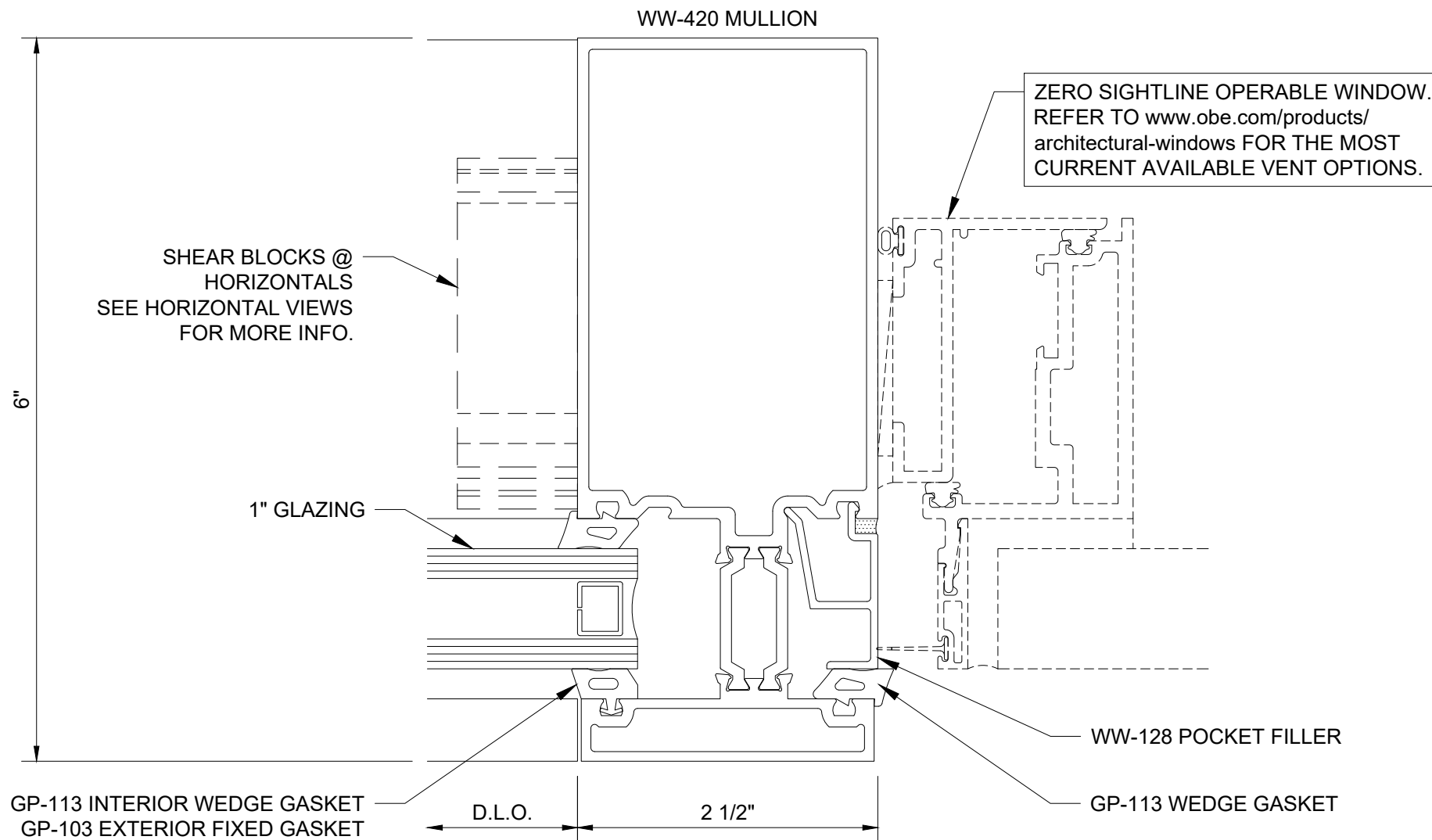
**Reliance™-TC IG**  
**Heavy Vertical - V8505**



## Reliance™-TC IG SOG Vertical - V8552

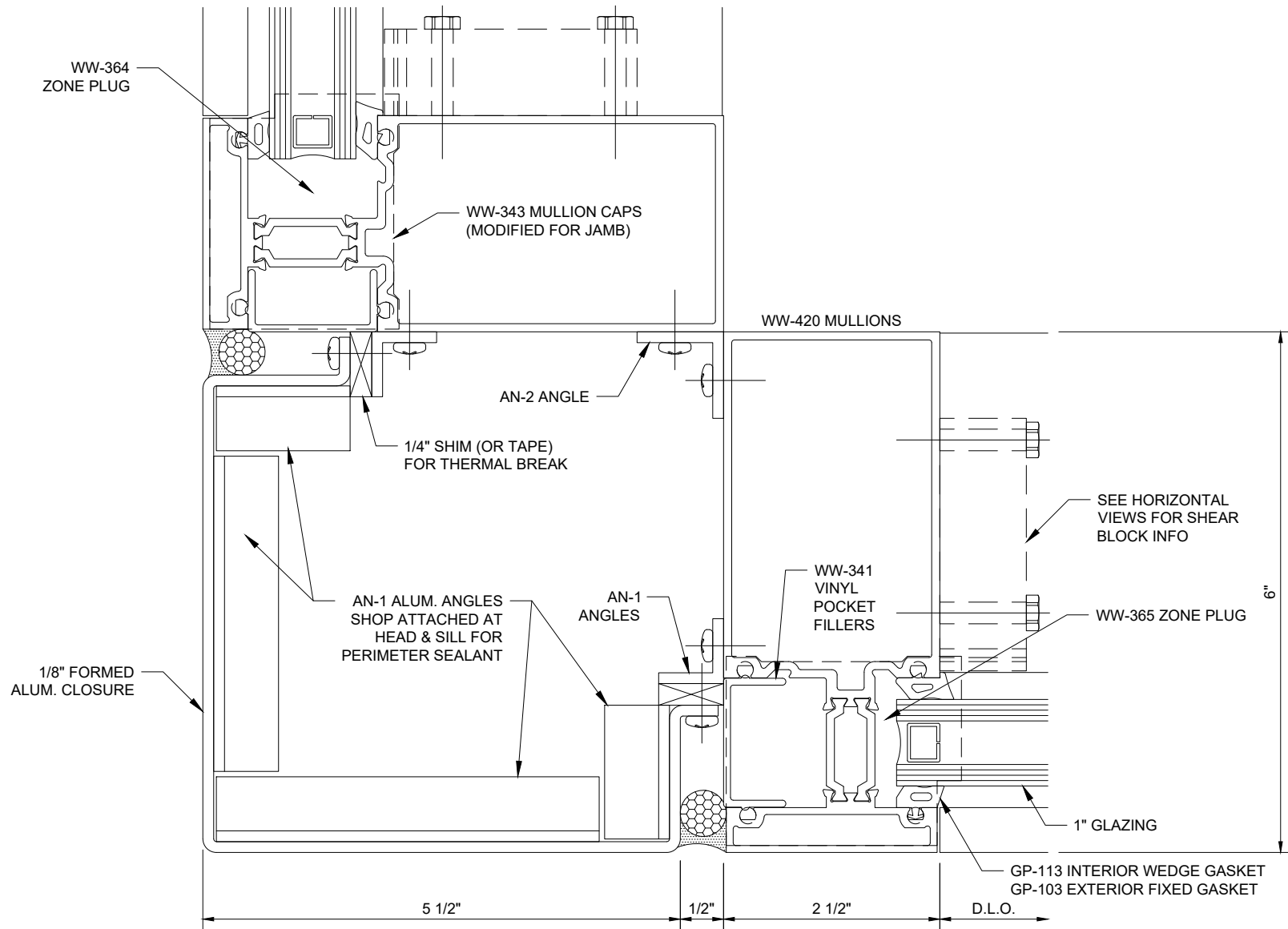


## Reliance™-TC IG SSG Vertical at Spandrel - V8557

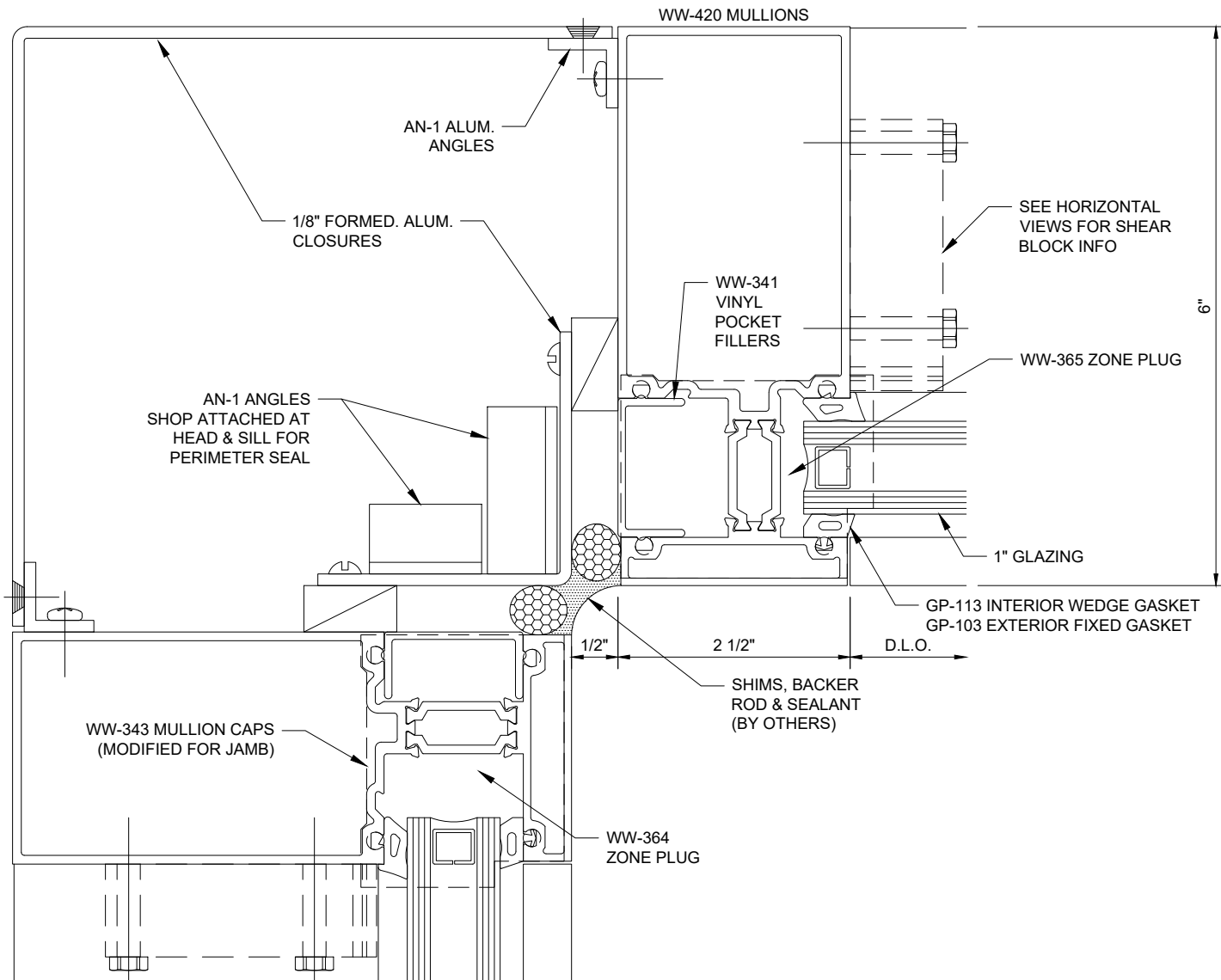


**Reliance™-TC IG**  
**Vertical at Operable Window - V8592**

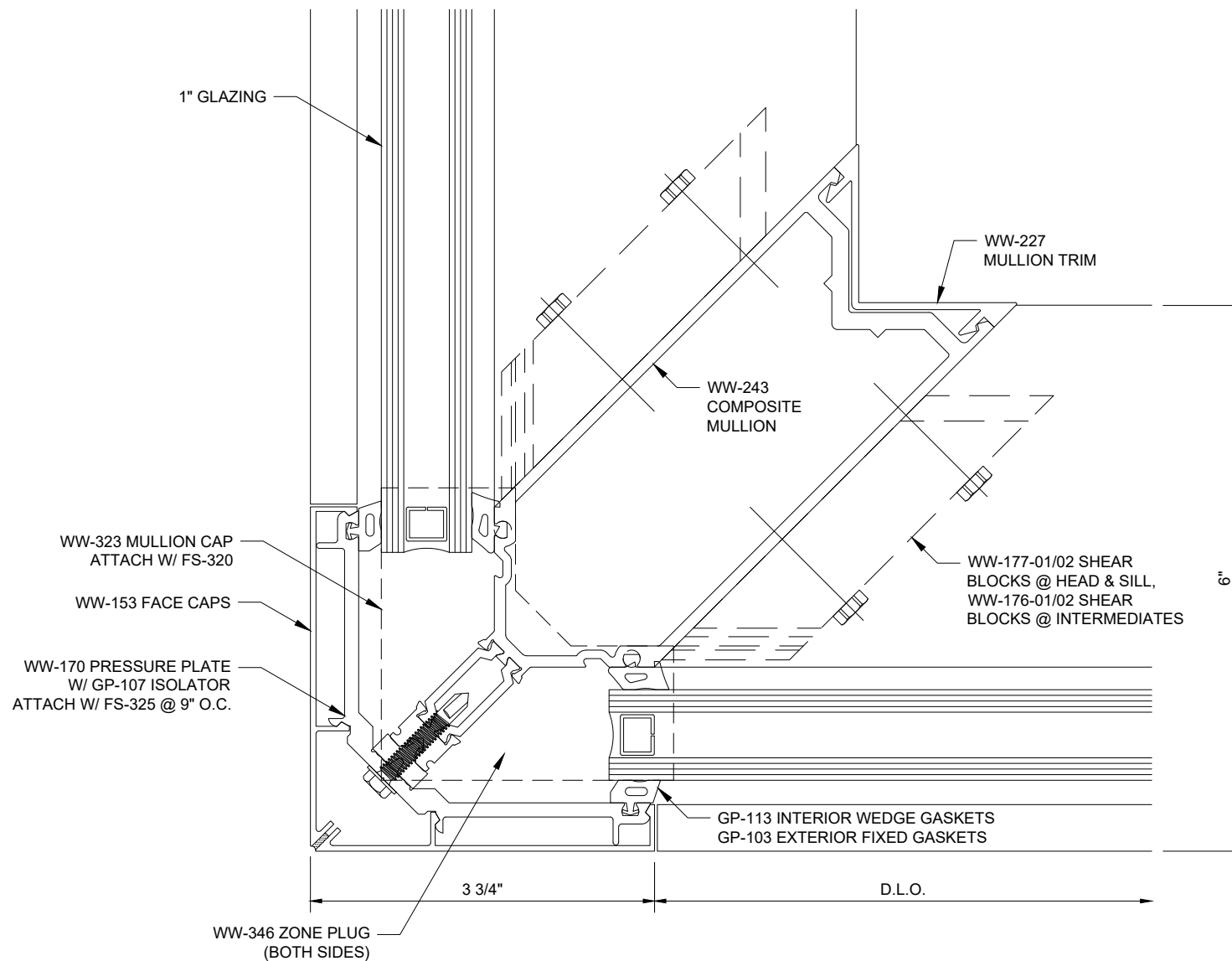




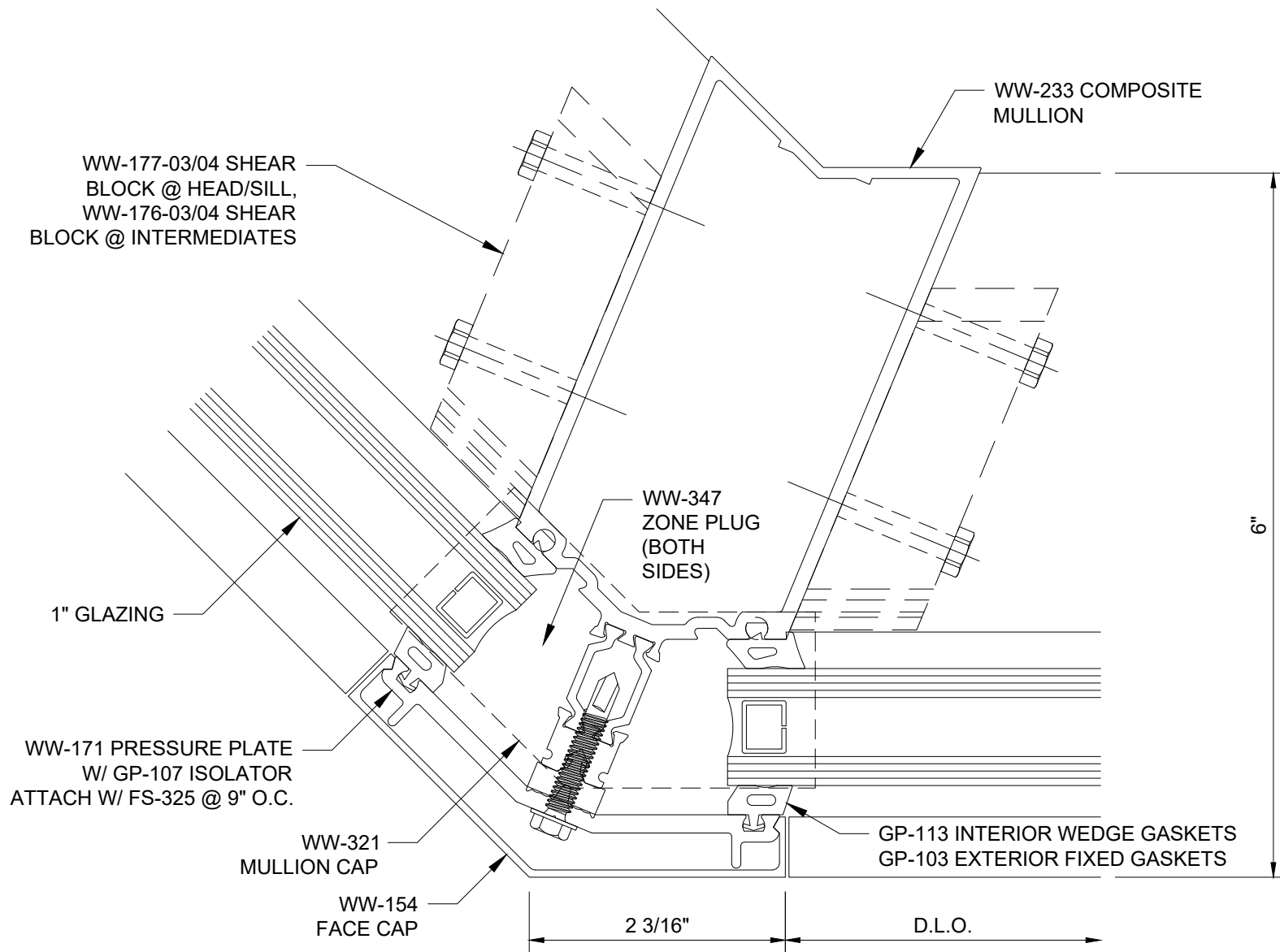
## Reliance™-TC IG 90° Outside Corner - V8515



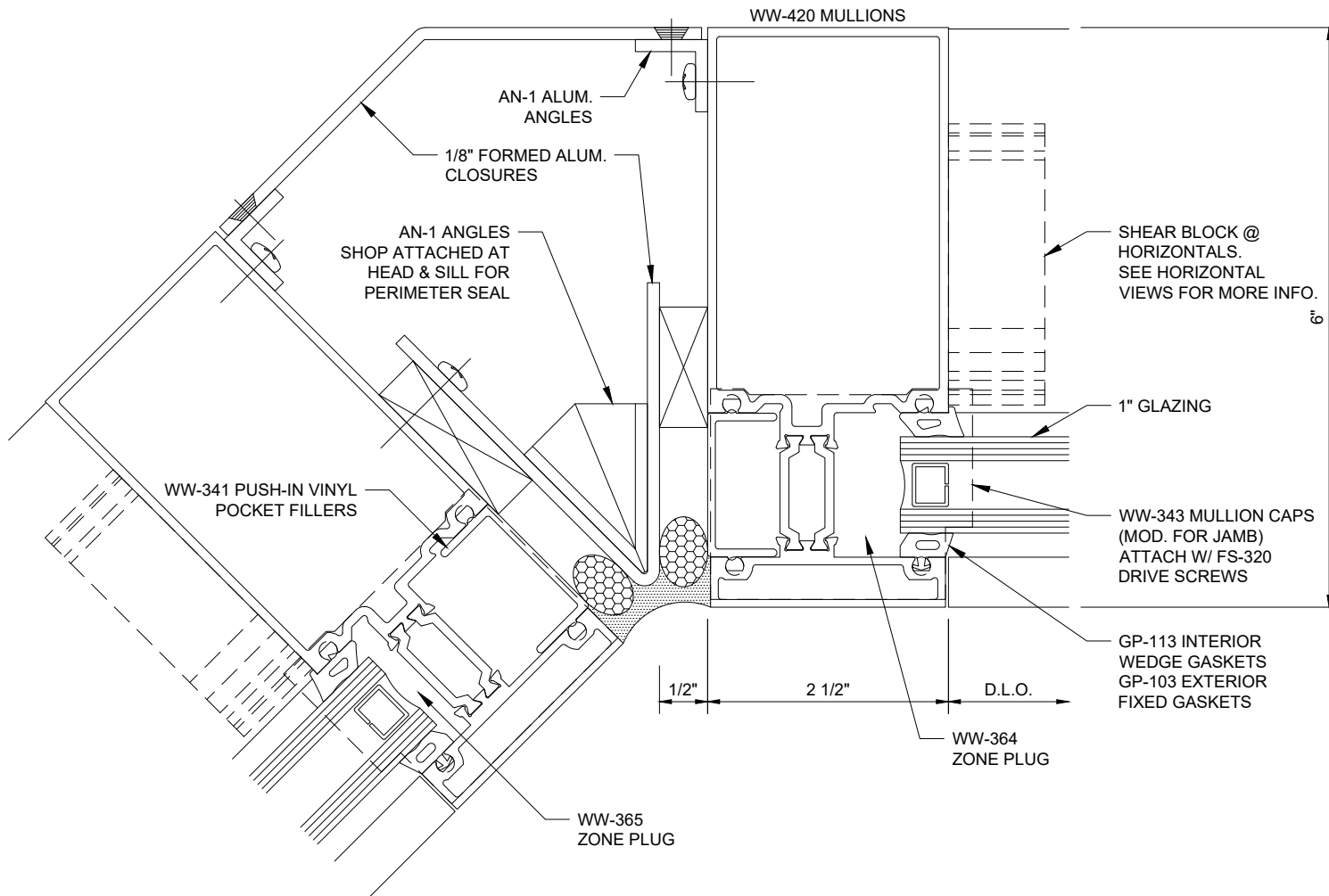
## Reliance™-TC IG 90° Inside Corner - V8517



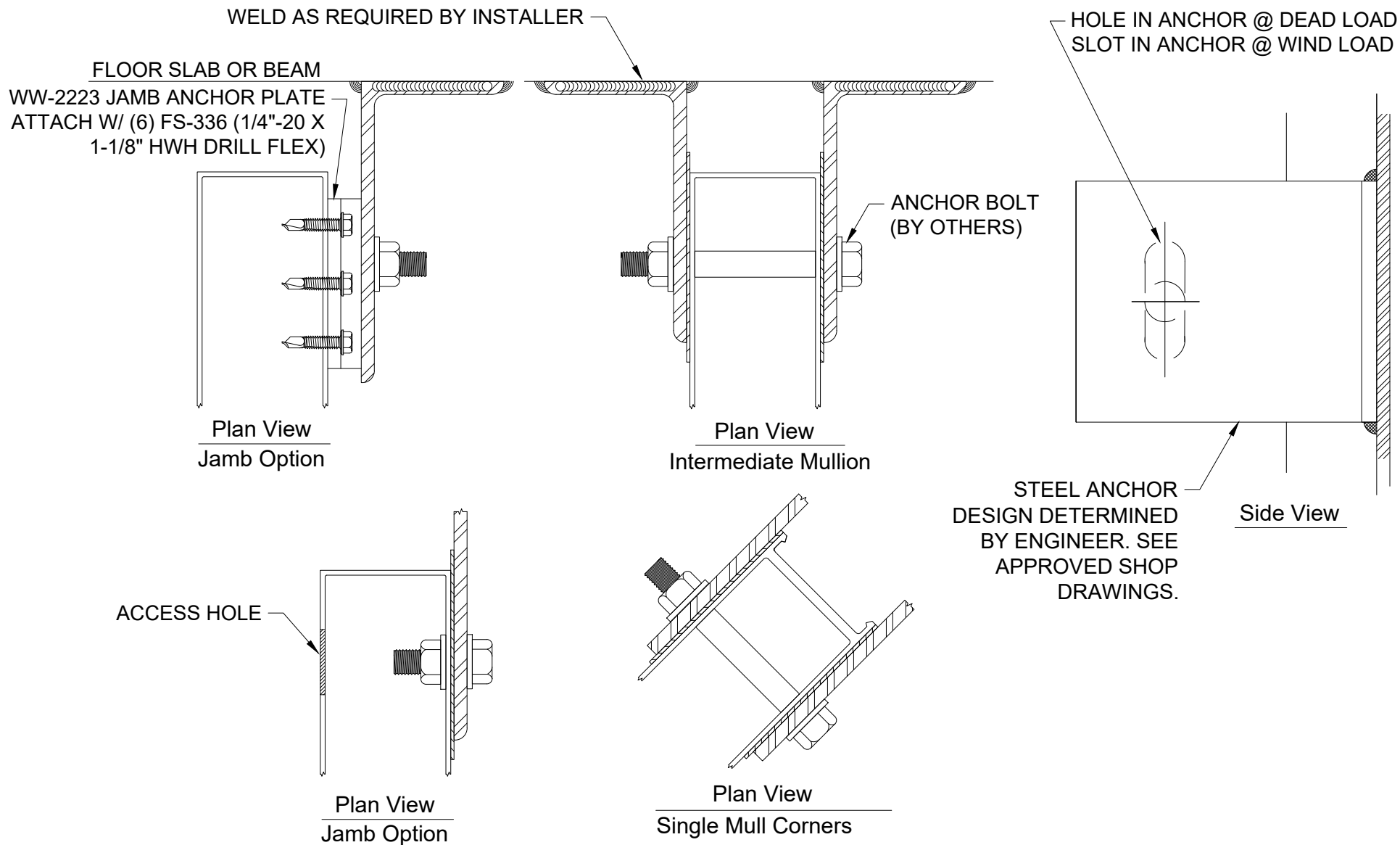
## Reliance™-TC IG 90° Outside Corner - V8521



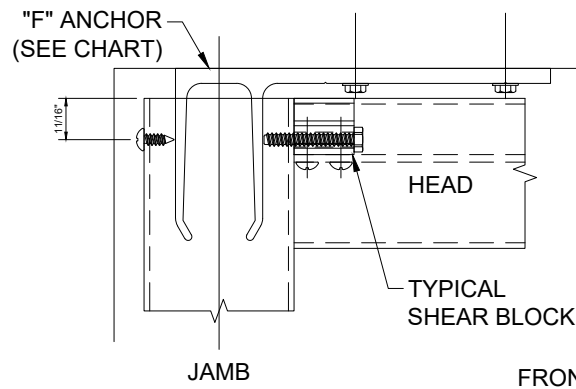
## Reliance™-TC IG 135° Outside Corner - V8523



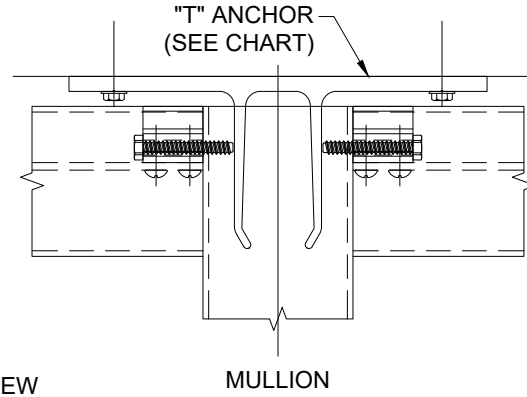
## Reliance™-TC IG 135° Inside Corner - V8527



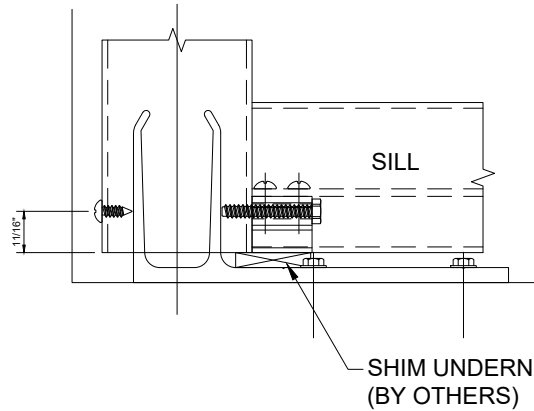
## Reliance™-TC IG Steel Anchor - H0042



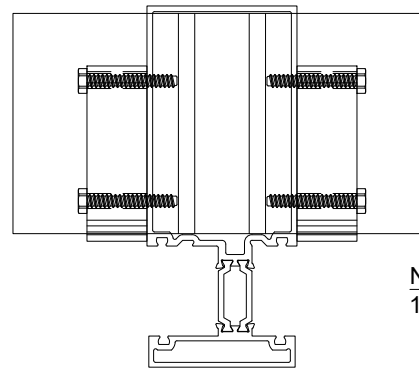
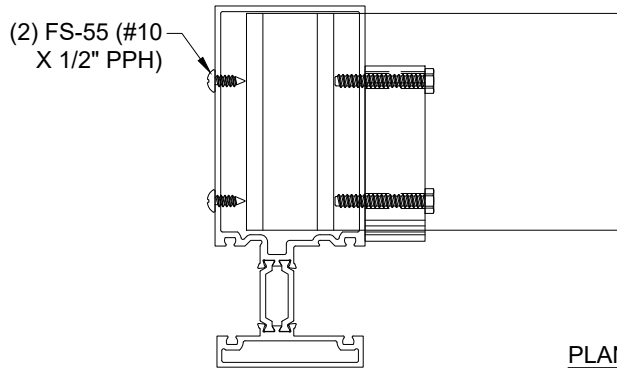
FRONT VIEW



MULLION



PLAN VIEW



"F" ANCHOR CHART	
PART NO.	MULLION
WW-103-05	WW-520
WW-103-06	WW-420
WW-103-07	WW-530
WW-103-08	WW-430

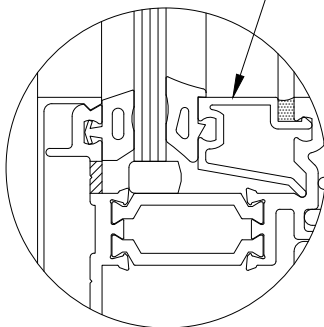
"T" ANCHOR CHART	
PART NO.	MULLION
WW-102-08	WW-504 / WW-520
WW-102-09	WW-404 / WW-420
WW-102-10	WW-530
WW-102-11	WW-430
WW-102-12	WW-243 (90° CORNER, 6" & 7-1/4" SYTEMS)
WW-102-13	WW-234 (135° CORNER, 7-1/4" SYSTEM)
WW-102-14	WW-233 (135° CORNER, 6" SYSTEM)

**NOTE:**

1. ANCHOR BOLT SIZE AND LOCATION DETERMINED BY STRUCTURAL ENGINEER

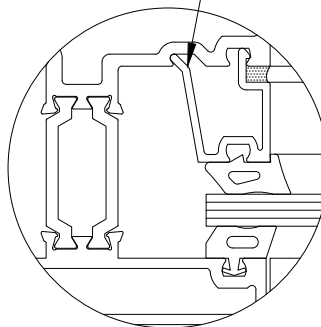
## Reliance™-TC IG "F" & "T" Anchors - H8425

WW-145 ADAPTOR, SET IN SEALANT  
HP-17 SETTING BLOCK (MODIFIED)



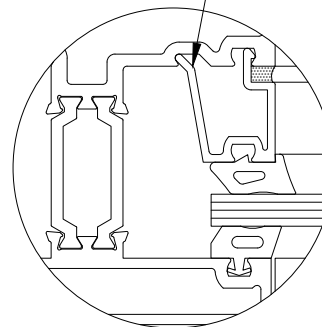
HORIZONTAL

WW-145 ADAPTOR,  
SET IN SEALANT



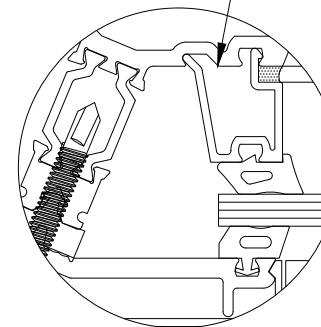
JAMB

WW-145 ADAPTOR,  
SET IN SEALANT



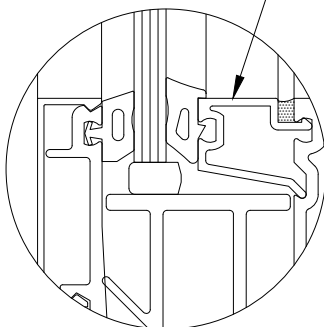
MULLION

WW-145 ADAPTOR,  
SET IN SEALANT



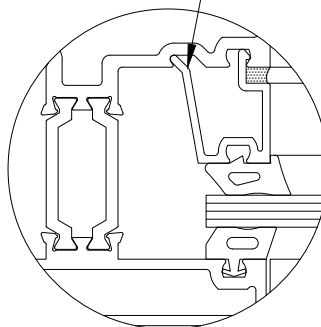
135° OUTSIDE CORNER

WW-145 ADAPTOR, SET IN SEALANT  
HP-17 SETTING BLOCK (MODIFIED)



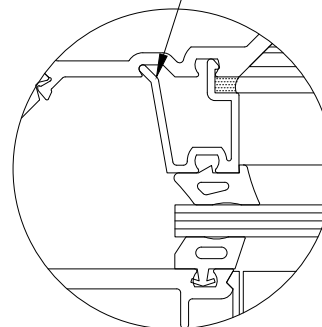
SILL

WW-145 ADAPTOR,  
SET IN SEALANT



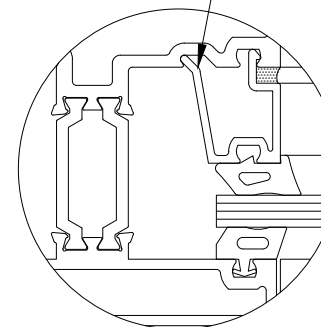
90° INSIDE CORNER

WW-145 ADAPTOR,  
SET IN SEALANT



90° OUTSIDE CORNER

WW-145 ADAPTOR,  
SET IN SEALANT



135° INSIDE CORNER

## Reliance™-TC IG Adaptor for 1/4" Glazing - H8499