

# Oldcastle BuildingEnvelope®

1-866-Oldcastle (653-2278) - [www.obe.com](http://www.obe.com)

## FG-2000

### 1-3/4" x 4-1/2" NON-THERMAL CENTER SET STOREFRONT W/ 1/4" TYP. INFILL

Elevation *(Drawing numbers---i.e., V0501---used as CAD detail reference only)*

#### **Horizontal Details**

H0501	Intermediate Horizontal - Outside Glazed
H0502	Head - Outside Glazed
H0503	Sill - Outside Glazed
H0504	Sill - Outside Glazed - 8 p.s.f.
H0505	Sill - Outside Glazed Option
H0506	Intermediate Horizontal - Stack Assembly
H0507	Head - Stack Assembly
H0508	Sill - Stack Assembly
H0511	Head w/ 1-piece Receptor
H0512	Head w/ 2-piece Receptor
H0514	Intermediate Horizontal - Inside Glazed
H0515	Head - Inside Glazed
H0516	Sill - Inside Glazed
H0519	Horizontal at Operable Window
H0543	Sidelite Base Sill

#### **Vertical Details**

V0501	Jamb
V0502	Jamb Option
V0503	Typical Vertical
V0504	Vertical - Stack Assembly
V0506	Vertical Option
V0507	Expansion Vertical

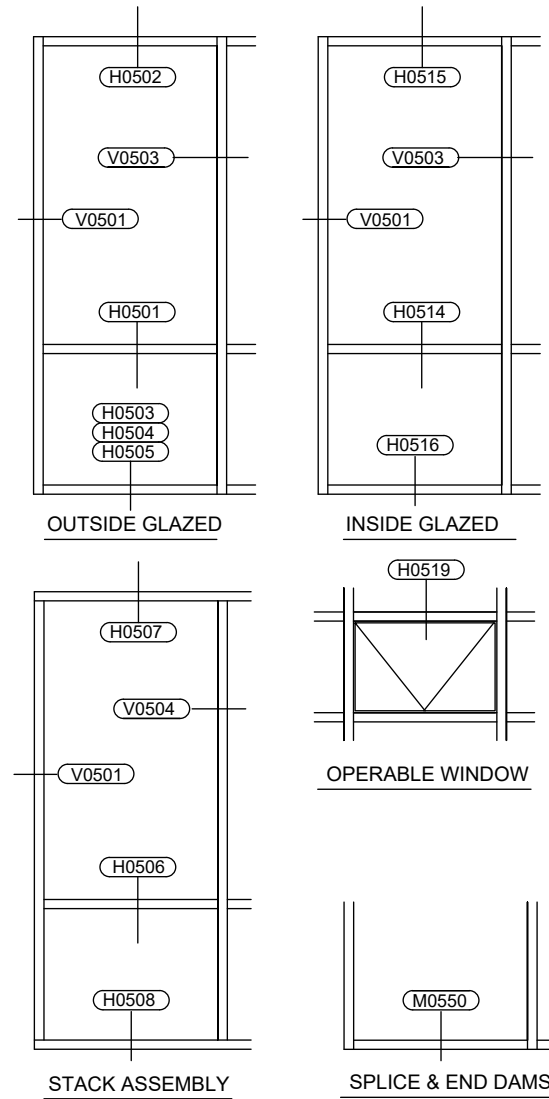
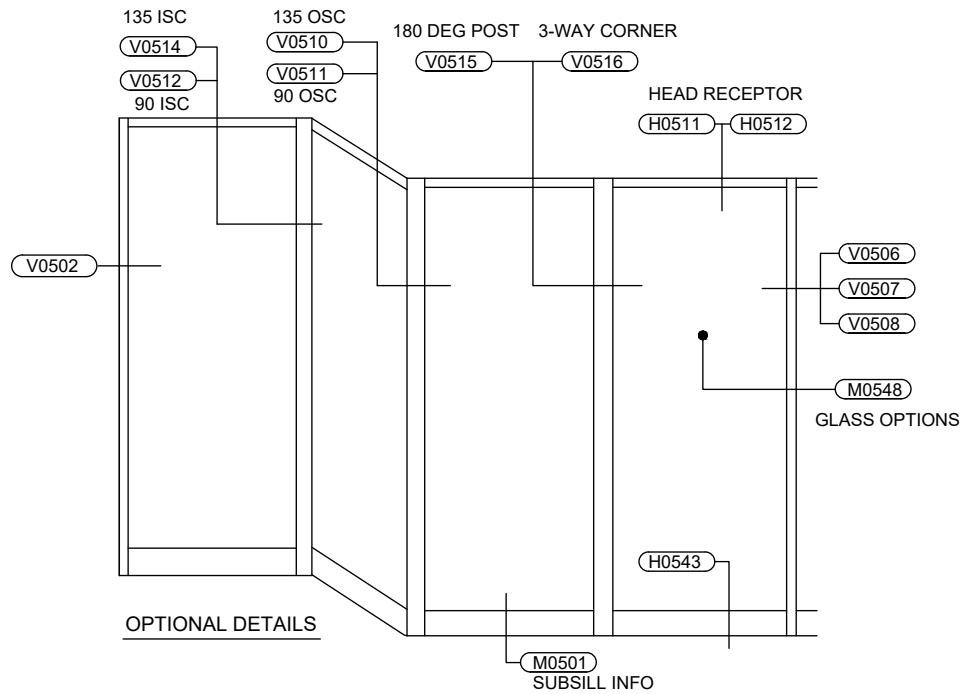
#### **Corner Details**

V0508	Adjustable Vertical
V0510	135° Outside Corner
V0511	90° Outside Corner
V0512	90° Inside Corner
V0514	135° Inside Corner
V0515	180° Post
V0516	3-way Post

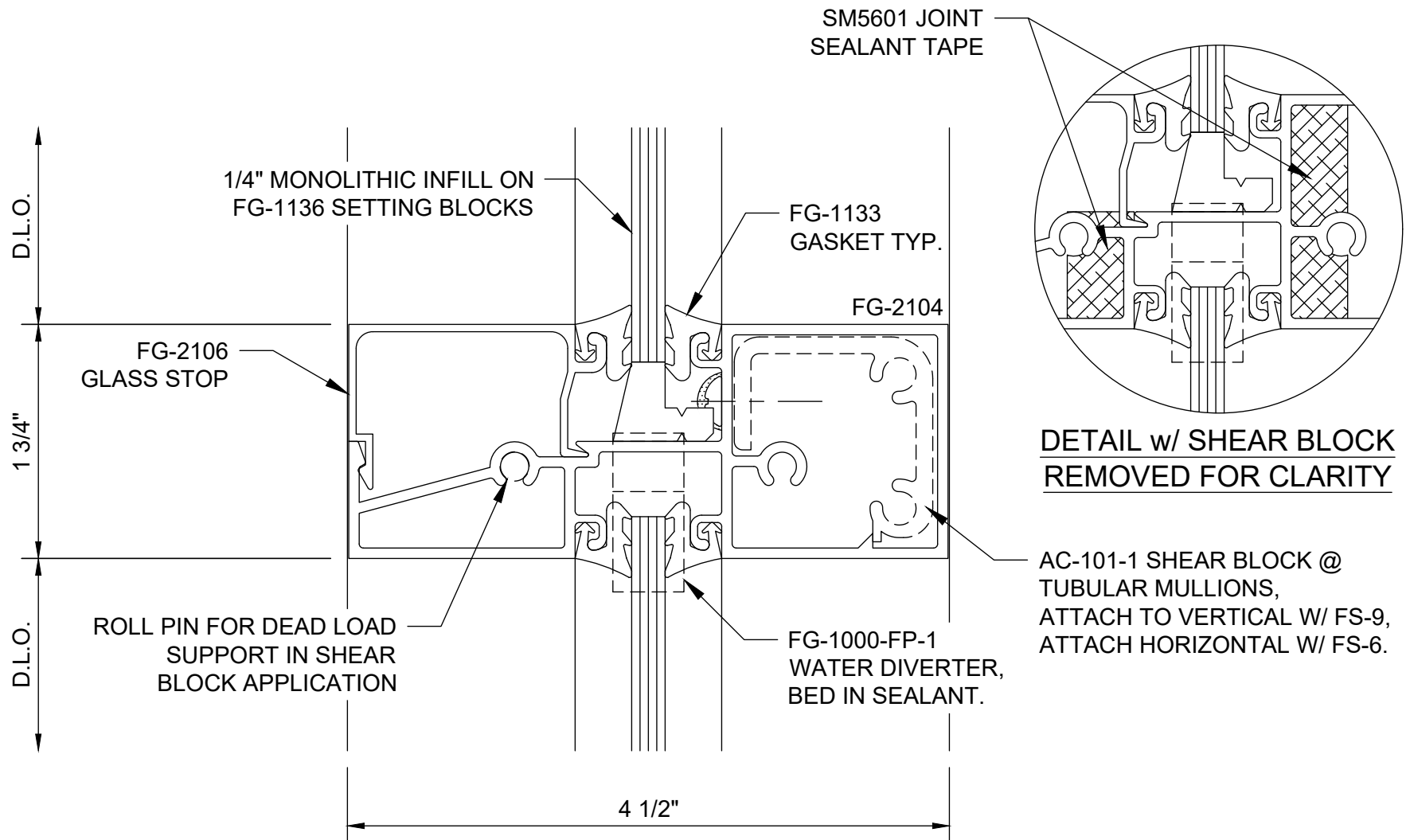
#### **Misc. Details**

M0501	Subsill Splicing and End Dam
M0548	Glazing Options

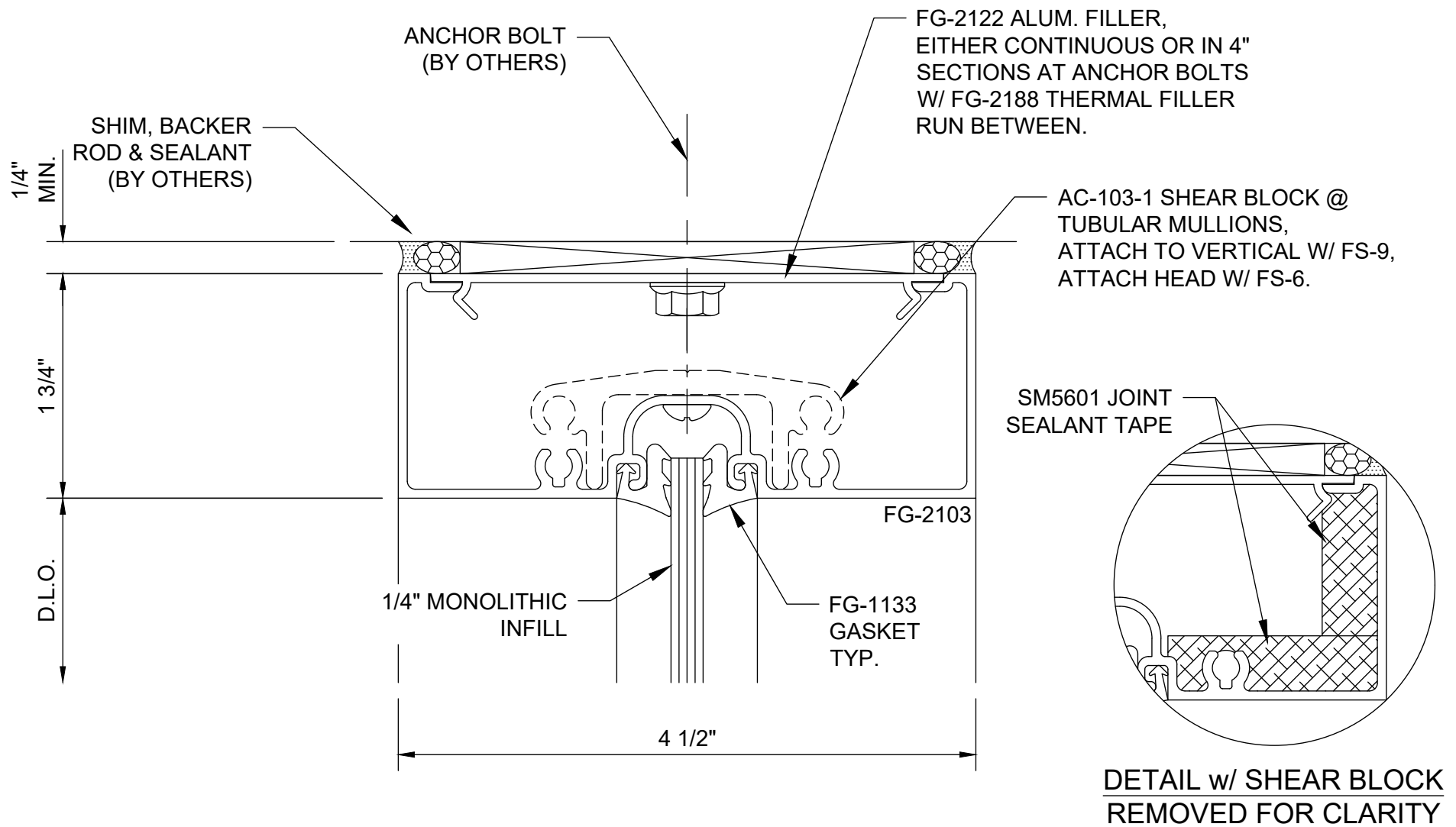
## Table of Contents



# FG-2000 1-3/4" x 4-1/2" Center Set Storefront w/ 1/4" Typ. Infill - Elevation

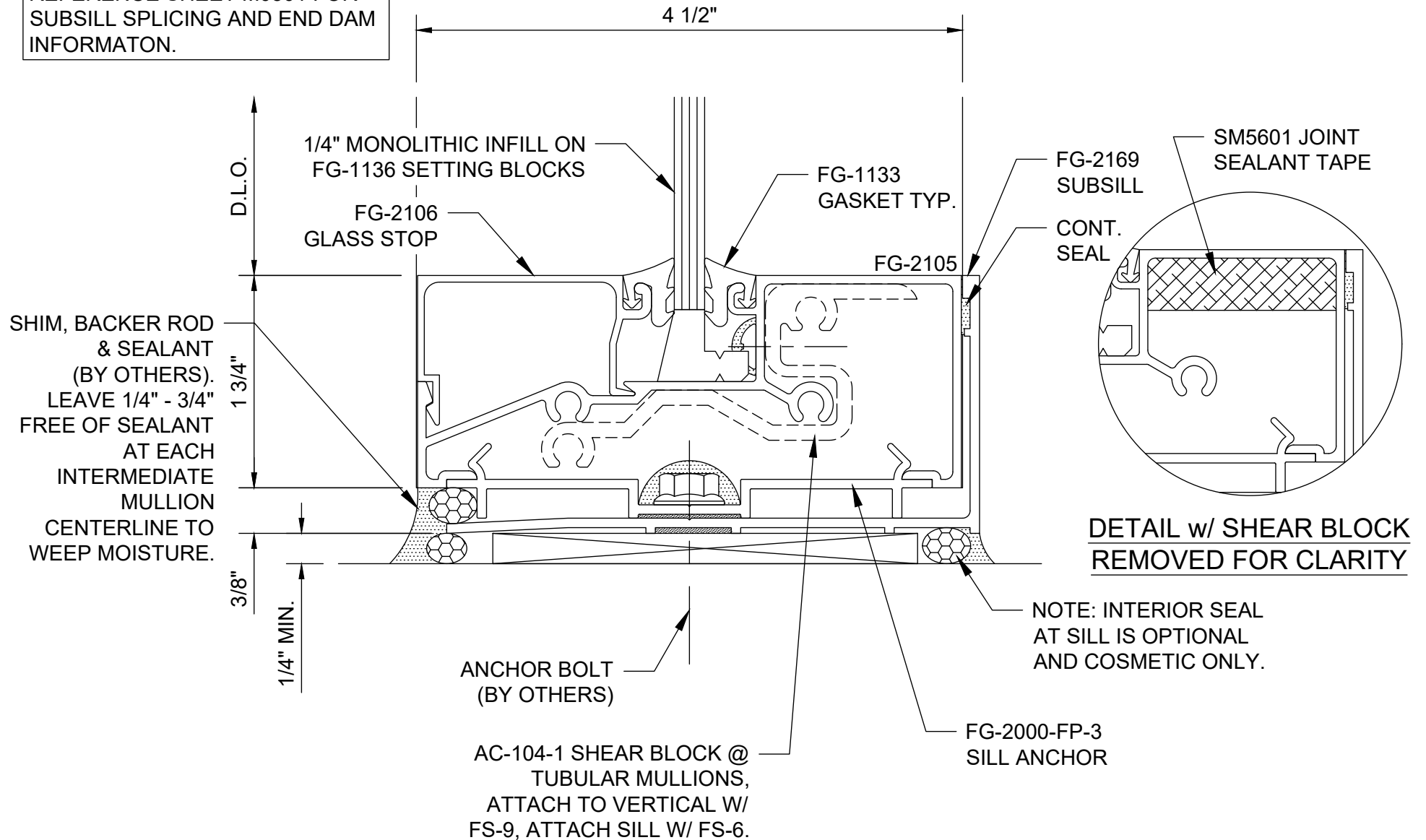


## FG-2000 Intermediate Horizontal - Outside Glazed - H0501



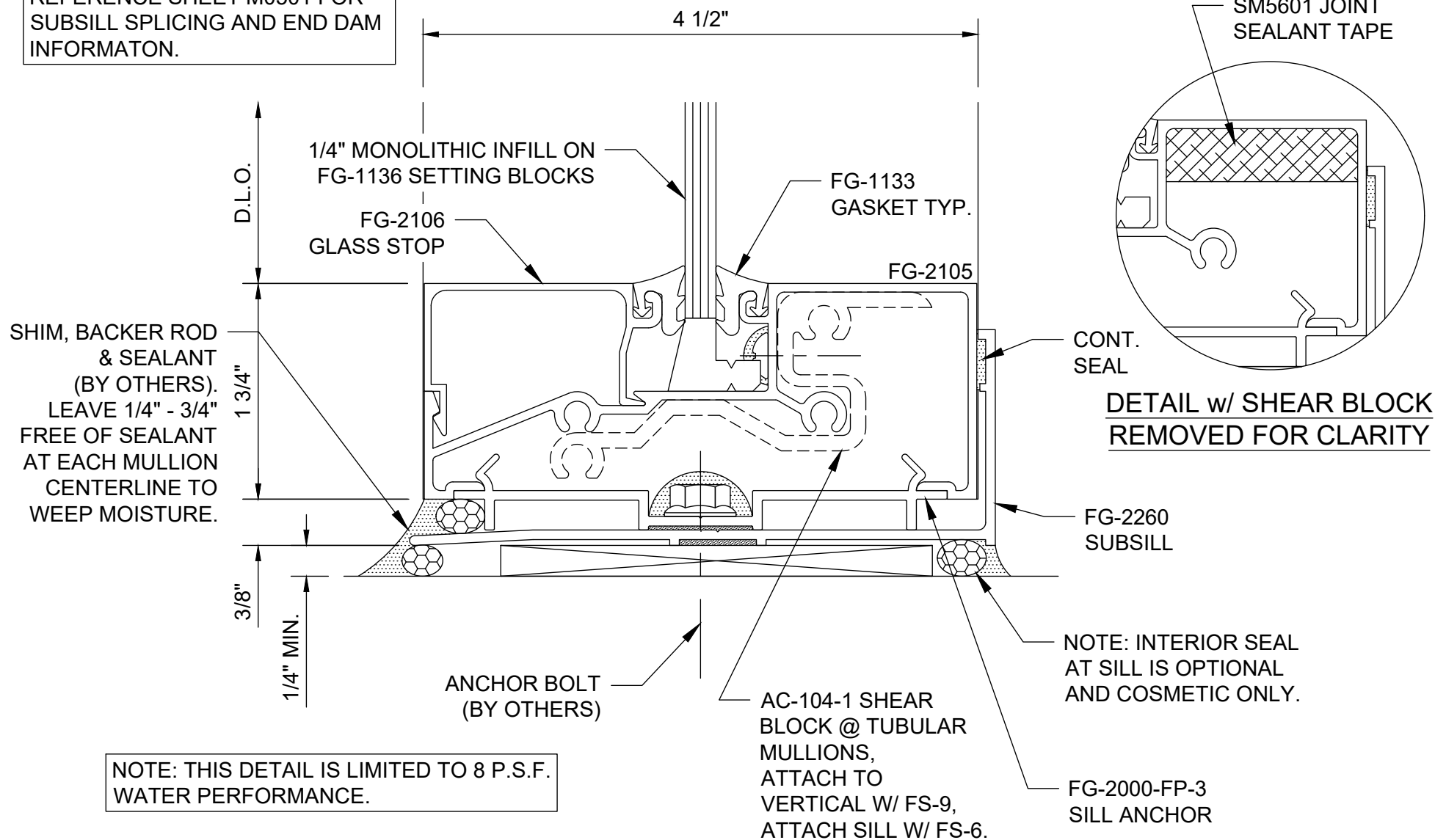
## FG-2000 Head - Outside Glazed - H0502

REFERENCE SHEET M0501 FOR  
SUBSILL SPLICING AND END DAM  
INFORMATON.



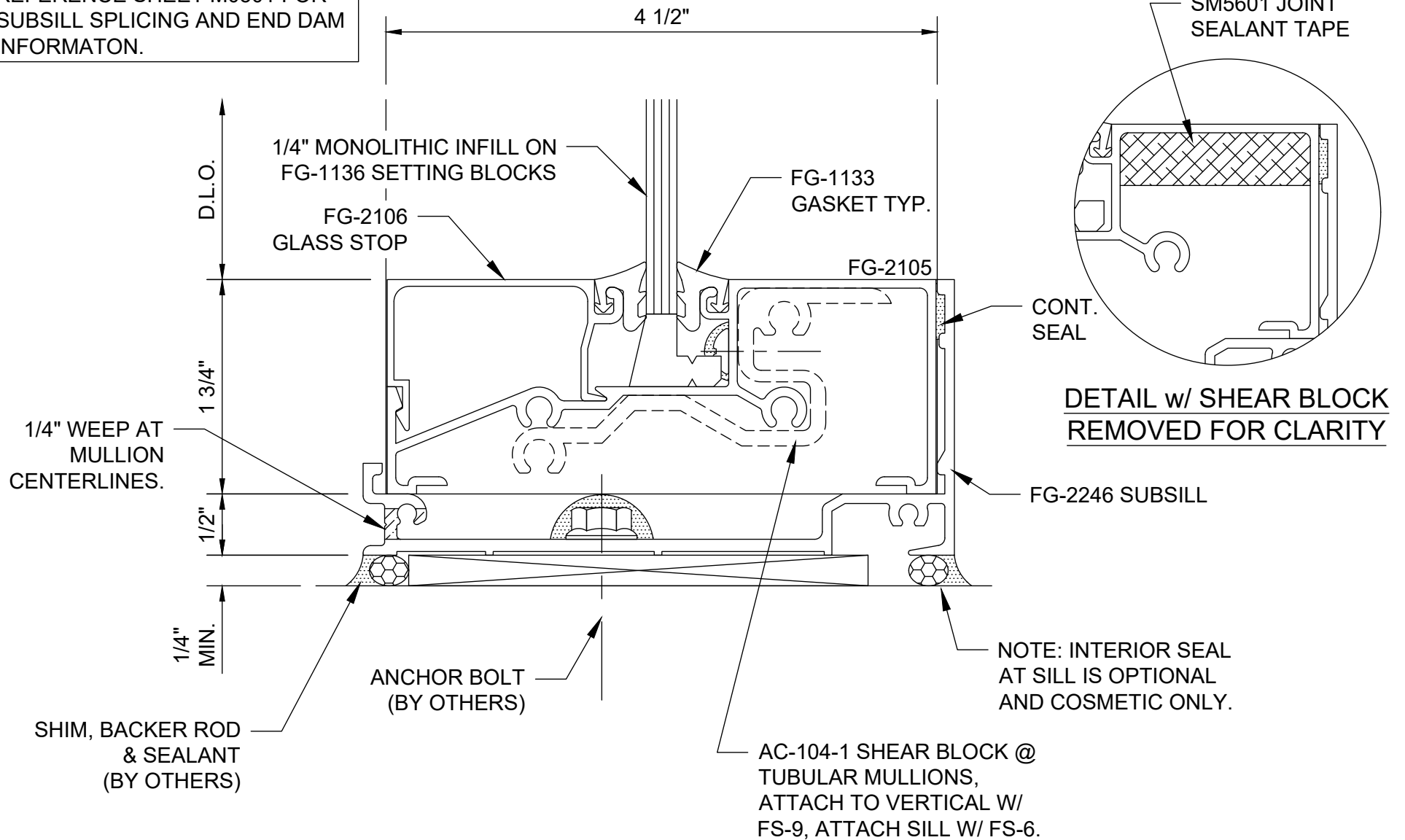
## FG-2000 Sill - Outside Glazed - H0503

REFERENCE SHEET M0501 FOR  
SUBSILL SPLICING AND END DAM  
INFORMATON.

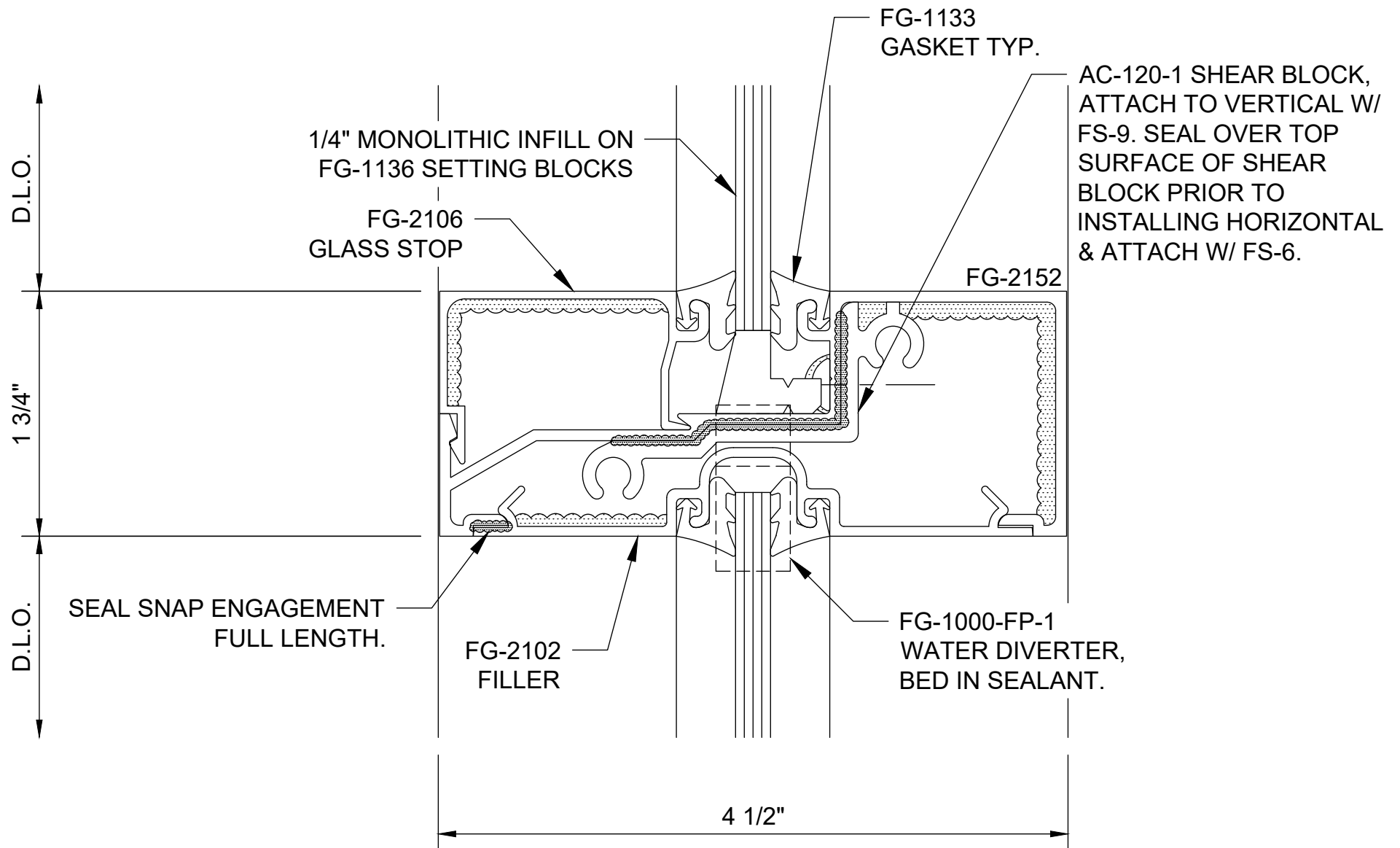


## FG-2000 Sill - Outside Glazed - 8 p.s.f. Water - H0504

REFERENCE SHEET M0501 FOR  
SUBSILL SPLICING AND END DAM  
INFORMATON.

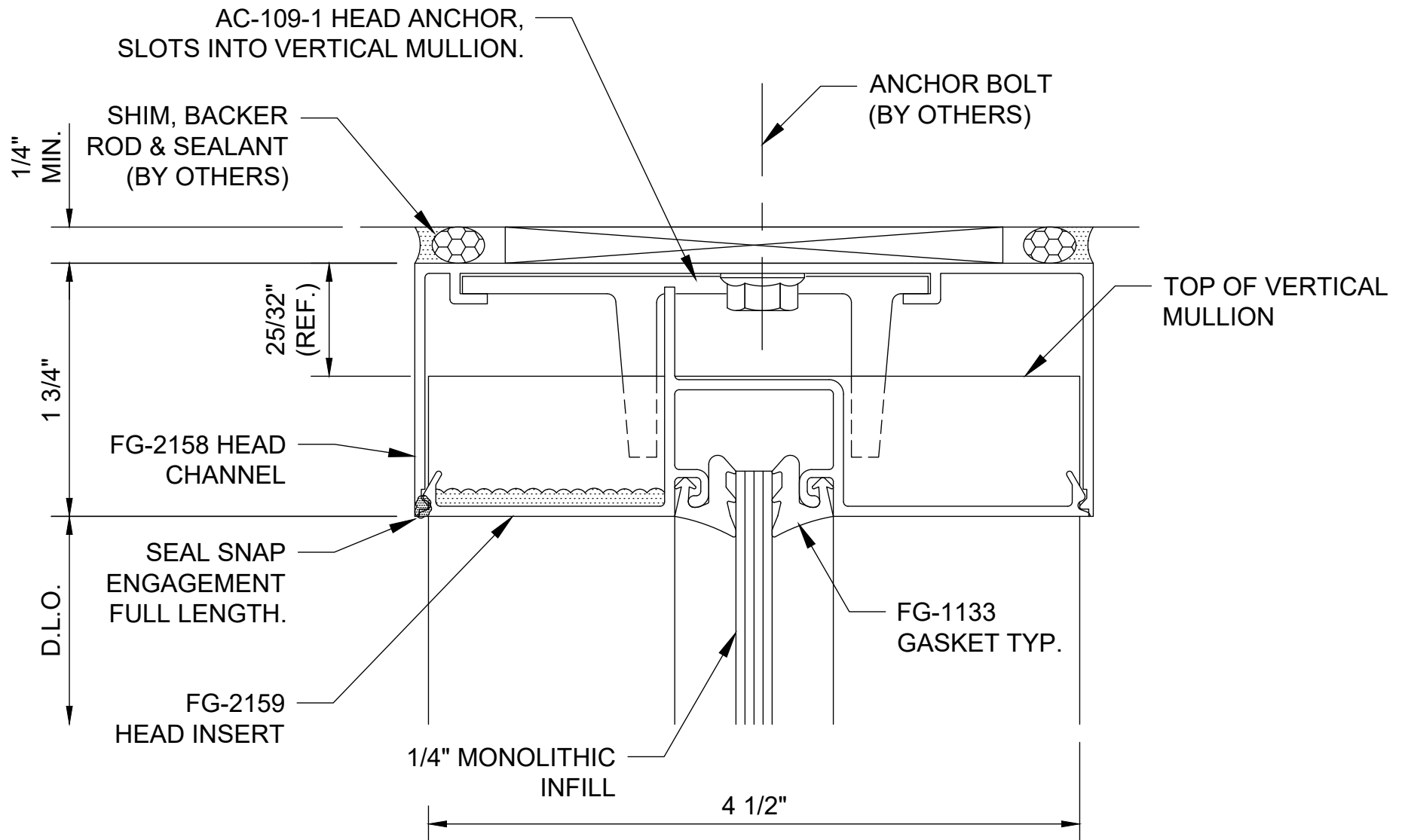


## FG-2000 Sill Option - Outside Glazed - H0505



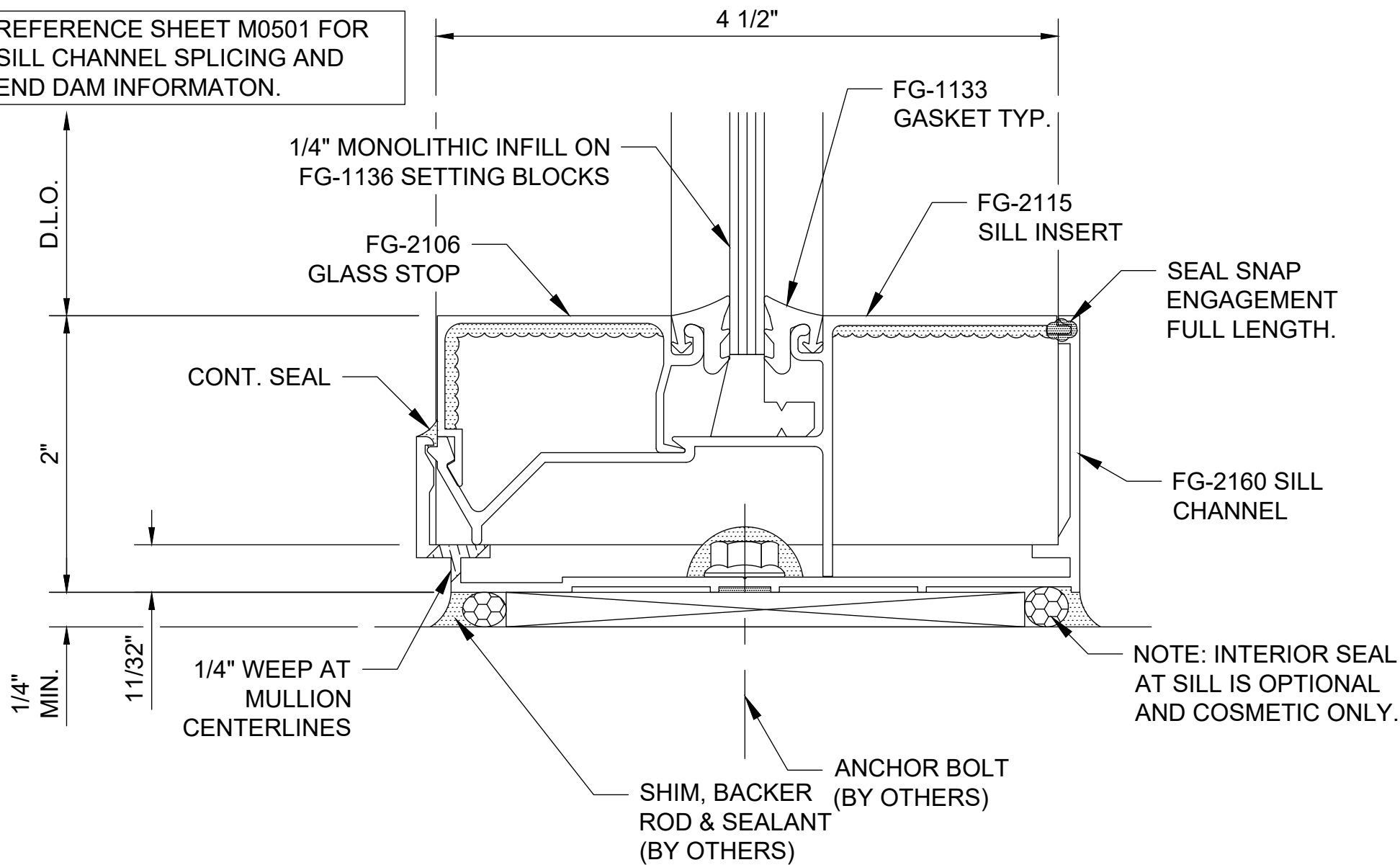
## FG-2000 Intermediate Horizontal - Stack Assembly System - H0506



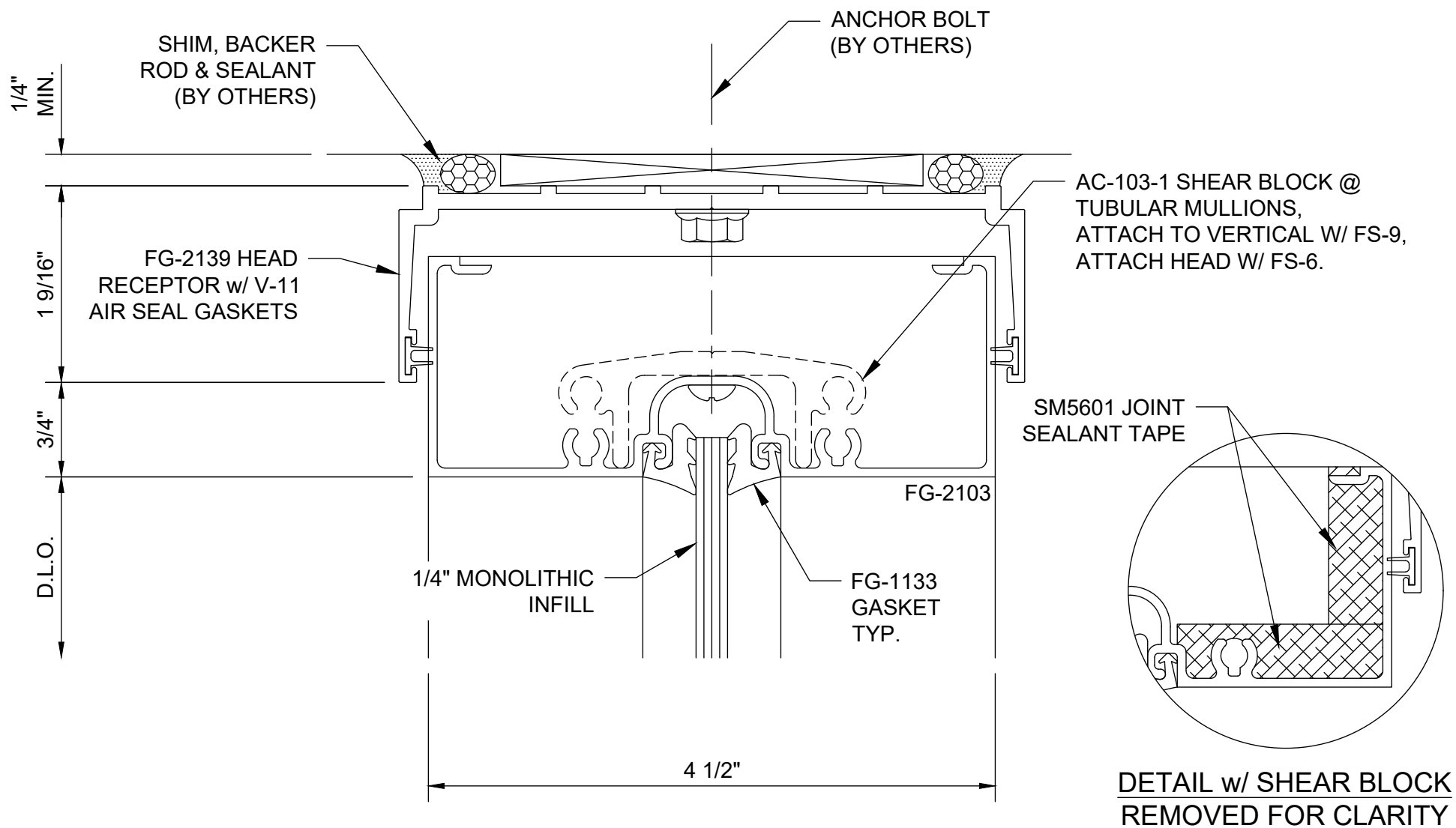


**FG-2000**  
**Head - Stack Assembly System - H0507**

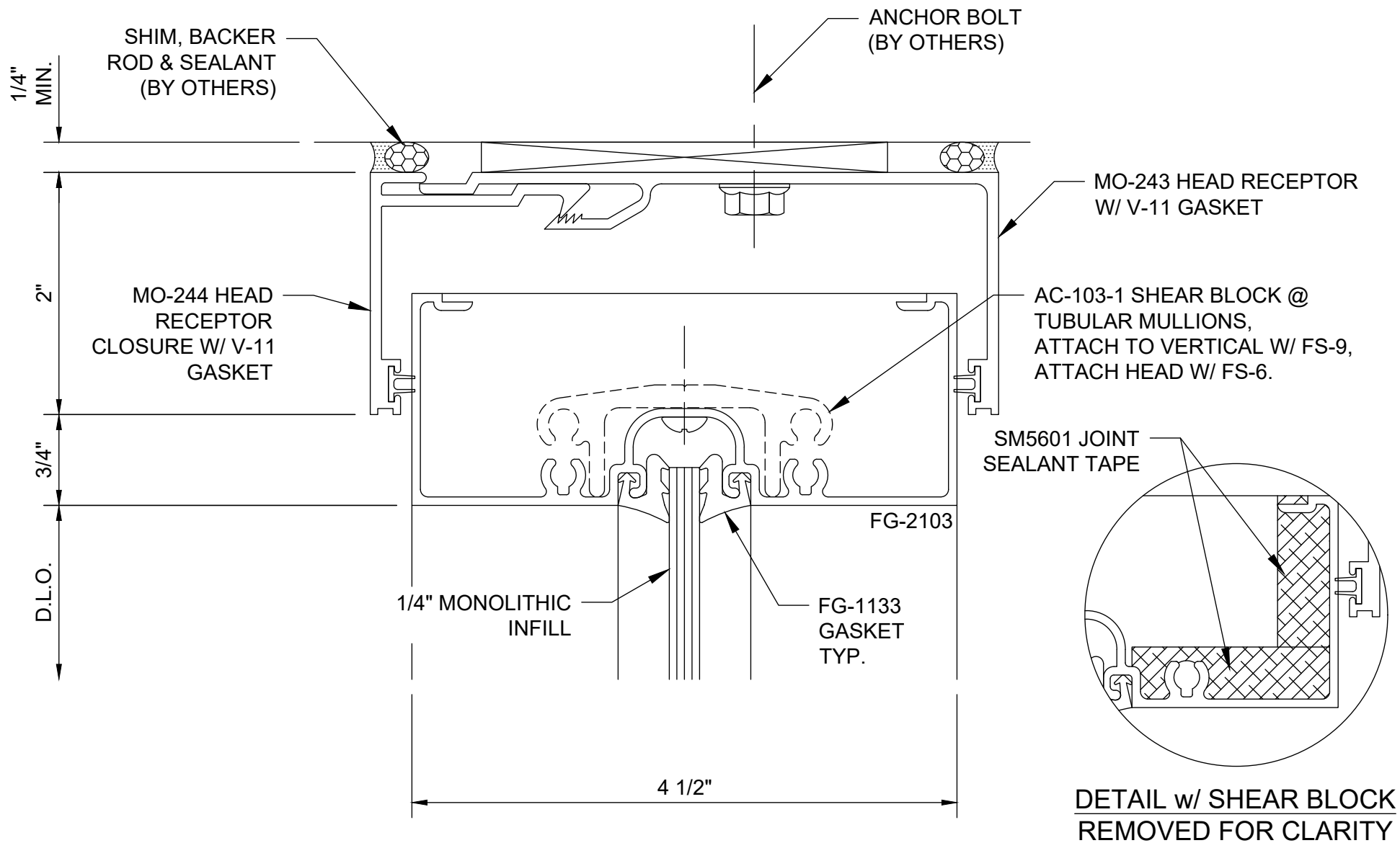
REFERENCE SHEET M0501 FOR  
SILL CHANNEL SPlicing AND  
END DAM INFORMATON.



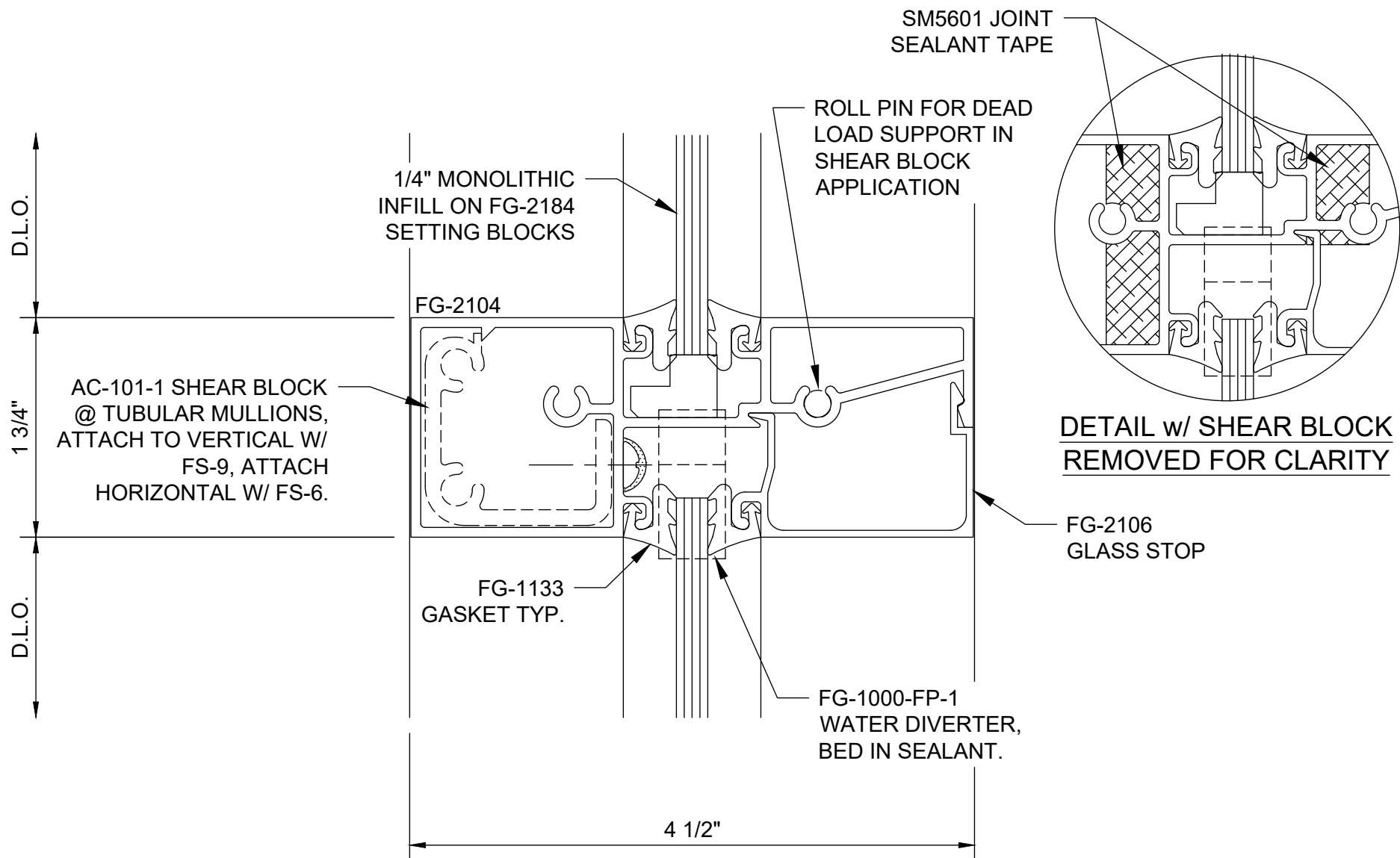
## FG-2000 Sill - Stack Assembly System - H0508



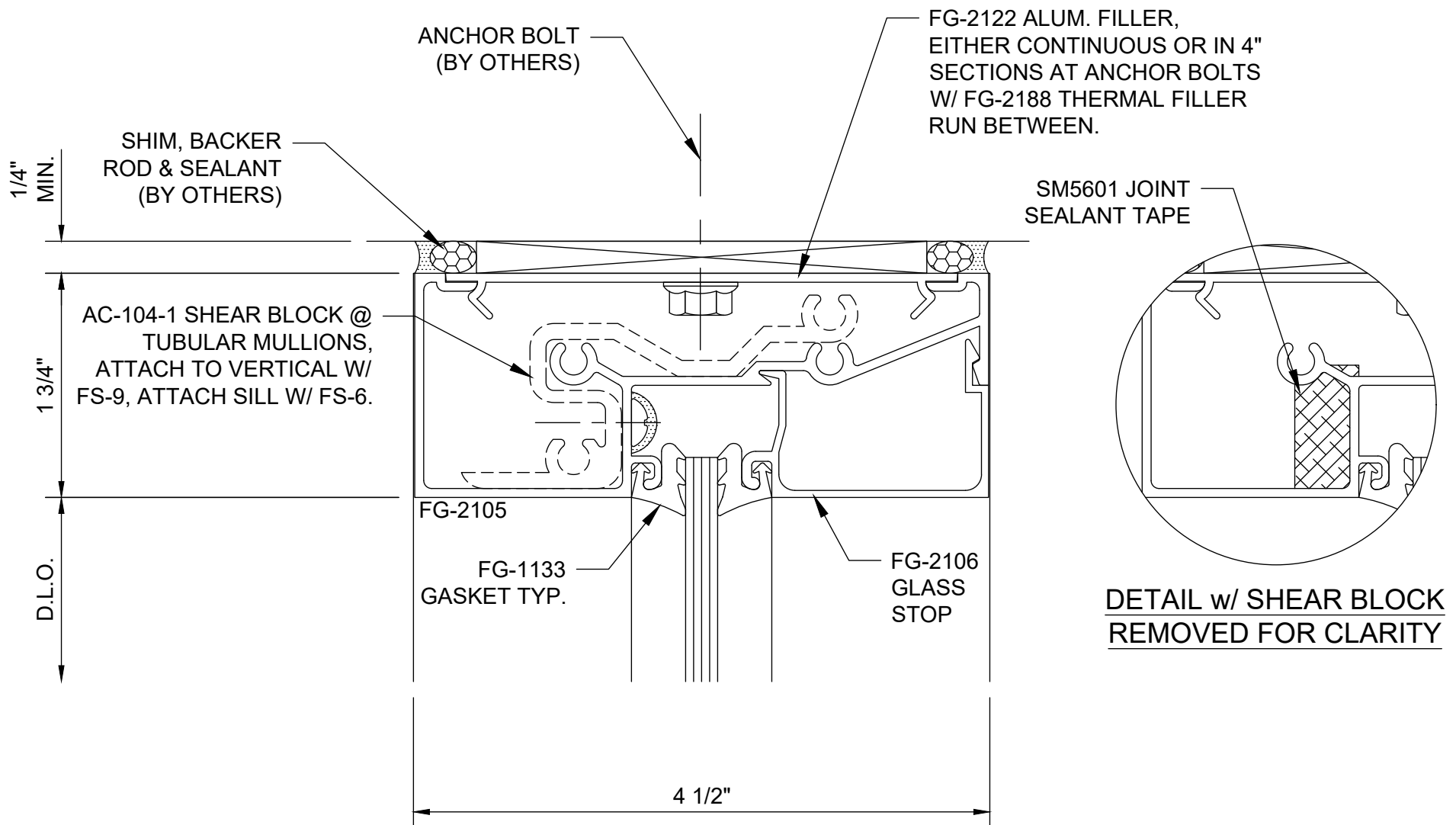
## FG-2000 Head w/ 1-piece Receptor - H0511



## FG-2000 Head w/ 2-piece Receptor - H0512

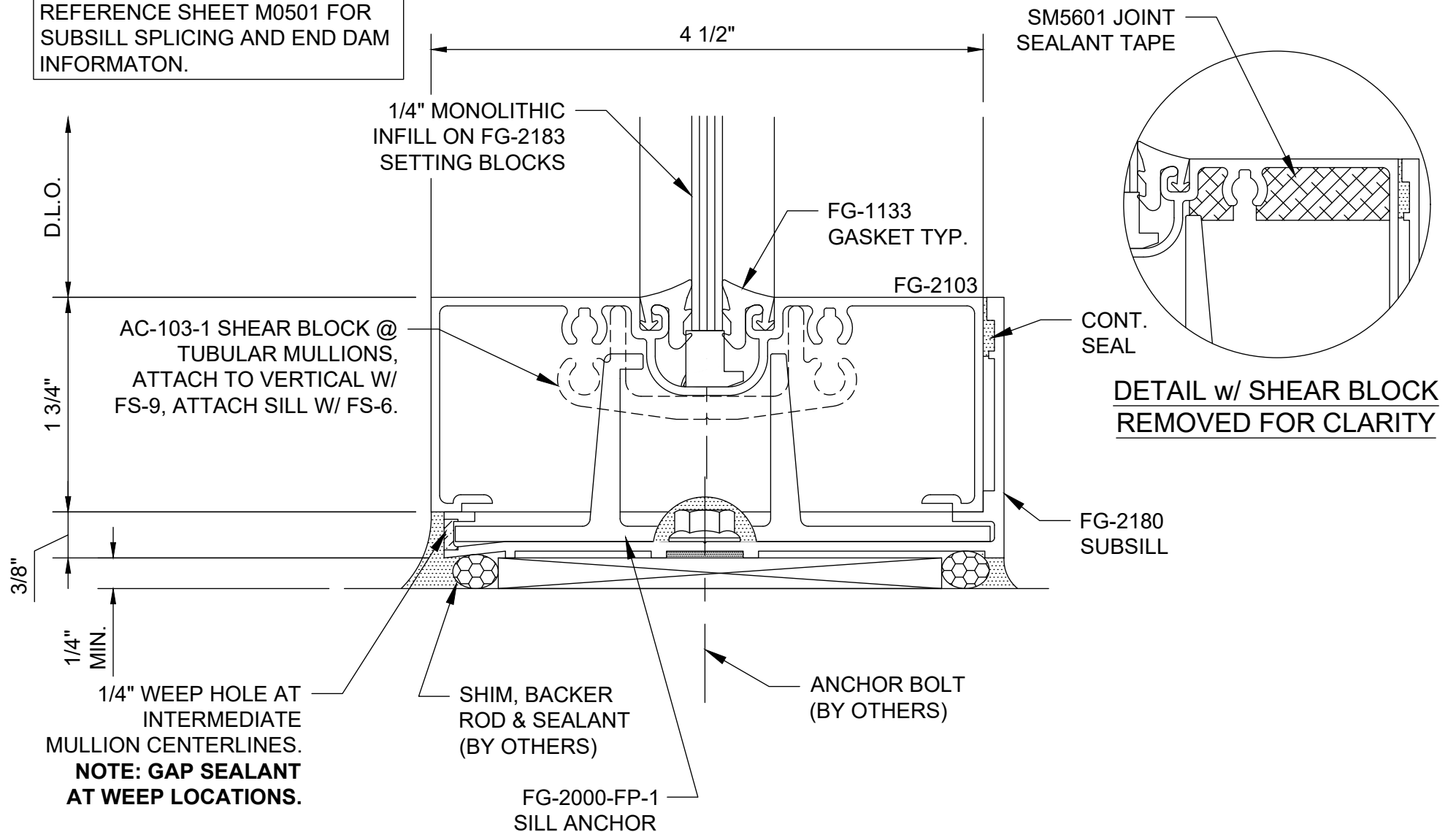


## FG-2000 Intermediate Horizontal - Inside Glazed - H0514

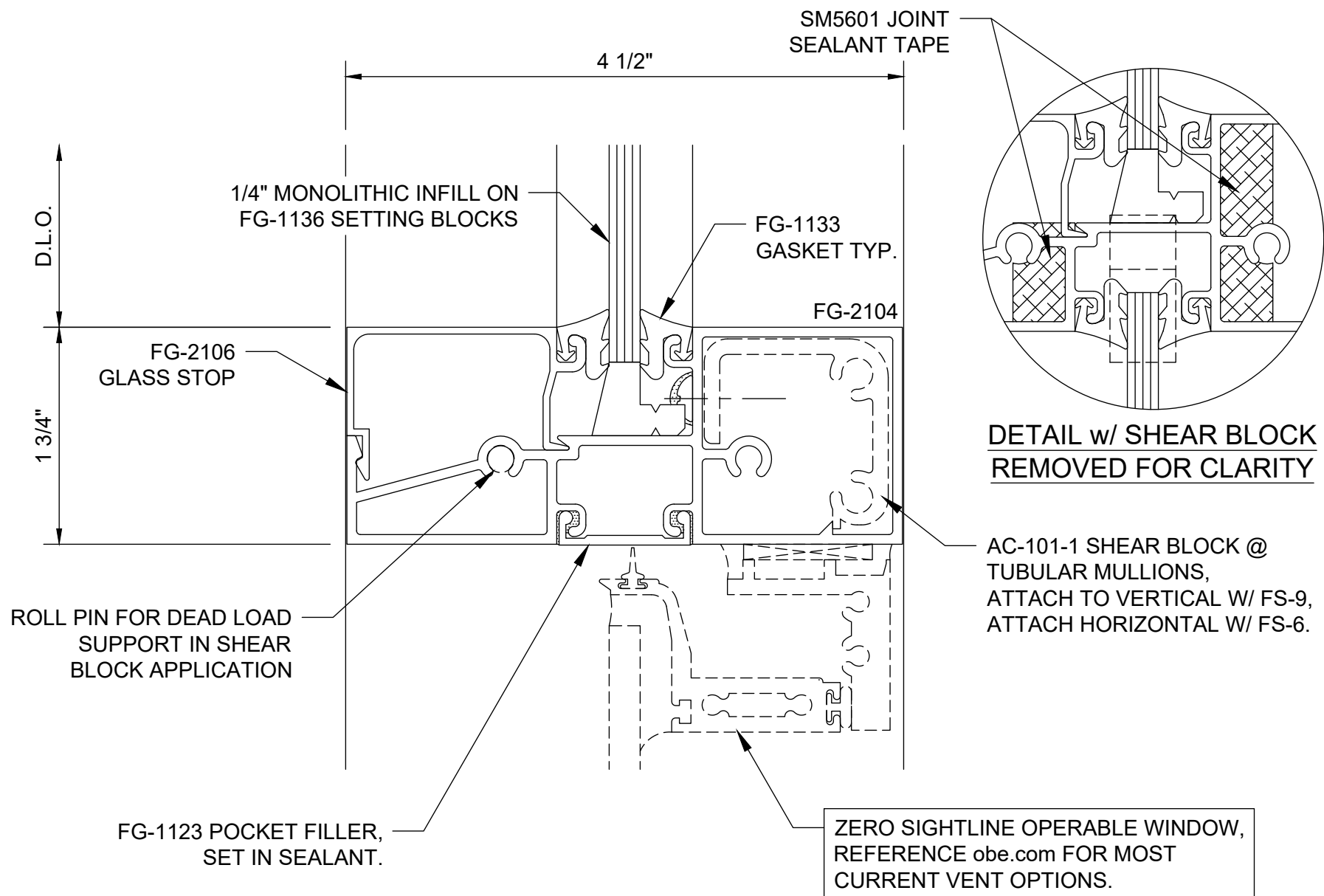


## FG-2000 Head - Inside Glazed - H0515

REFERENCE SHEET M0501 FOR  
SUBSILL SPLICING AND END DAM  
INFORMATON.

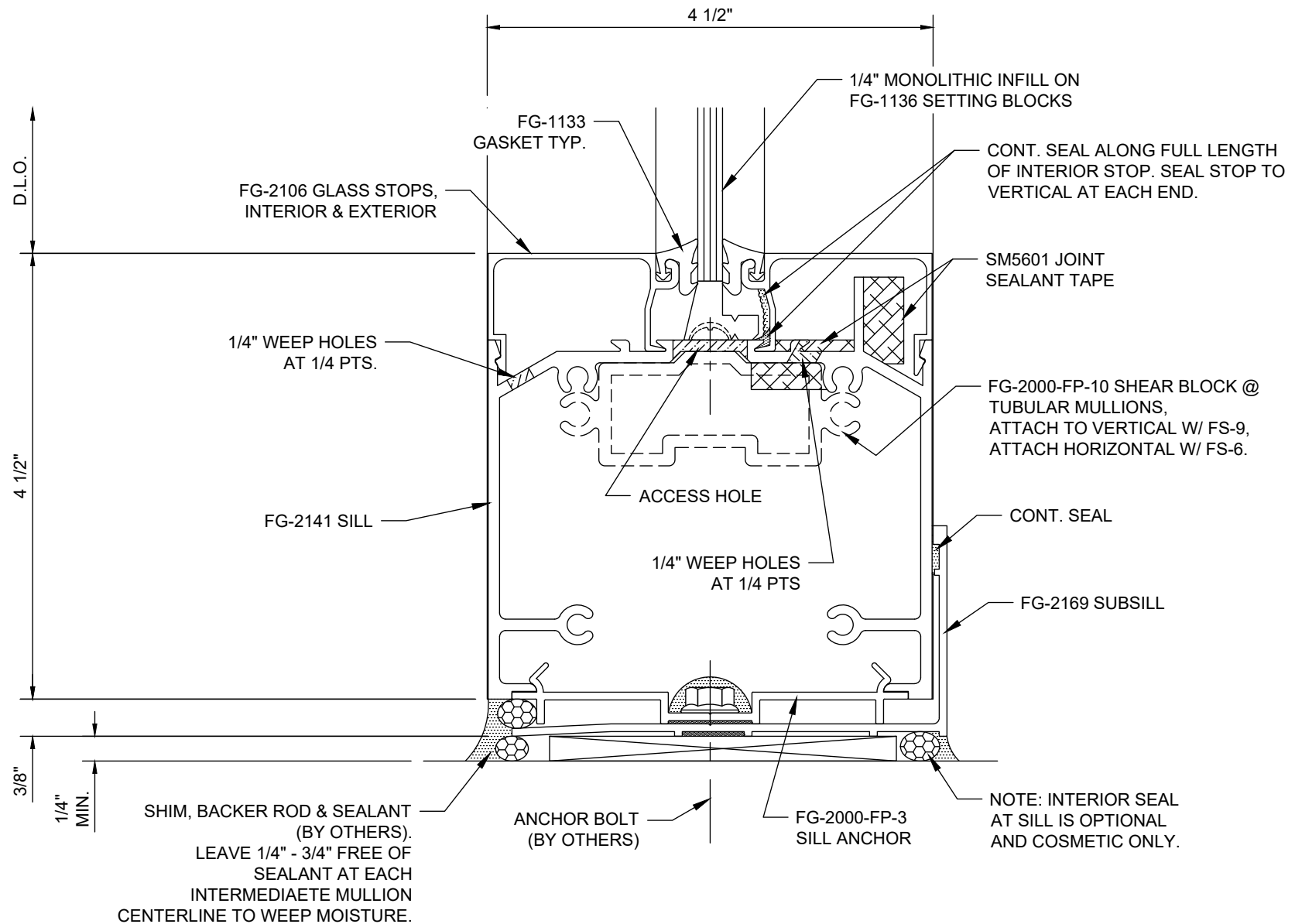


## FG-2000 Sill - Inside Glazed - H0516

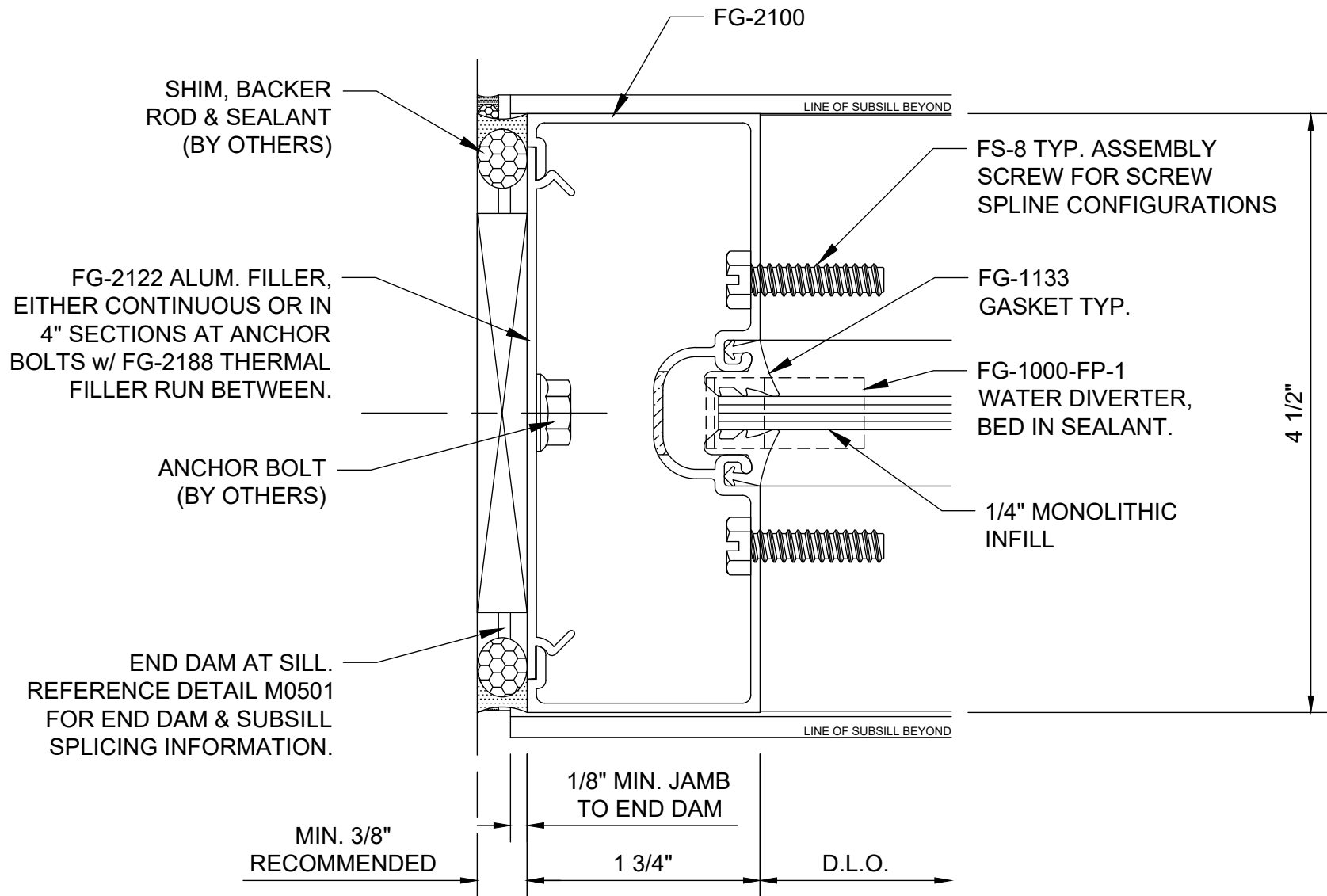


## FG-2000 Horizontal at Operable Window - H0519

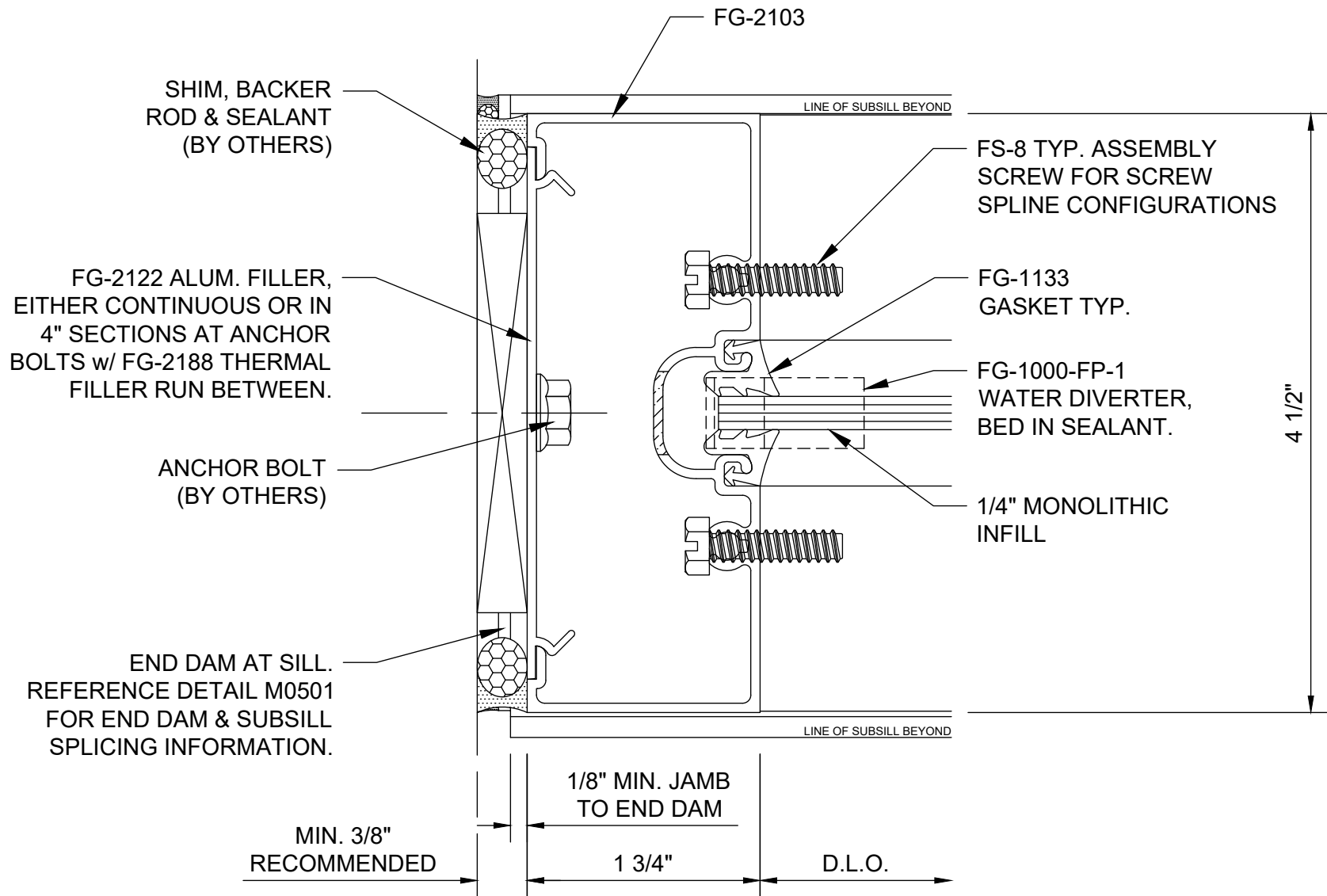




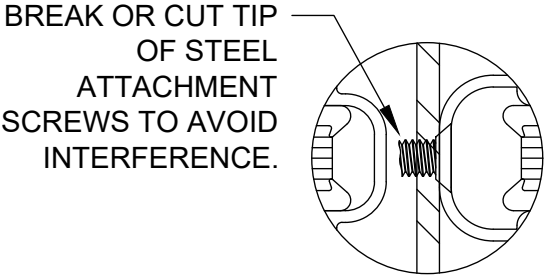
## FG-2000 Sidelite Base Sill - H0543



## FG-2000 Jamb - V0501

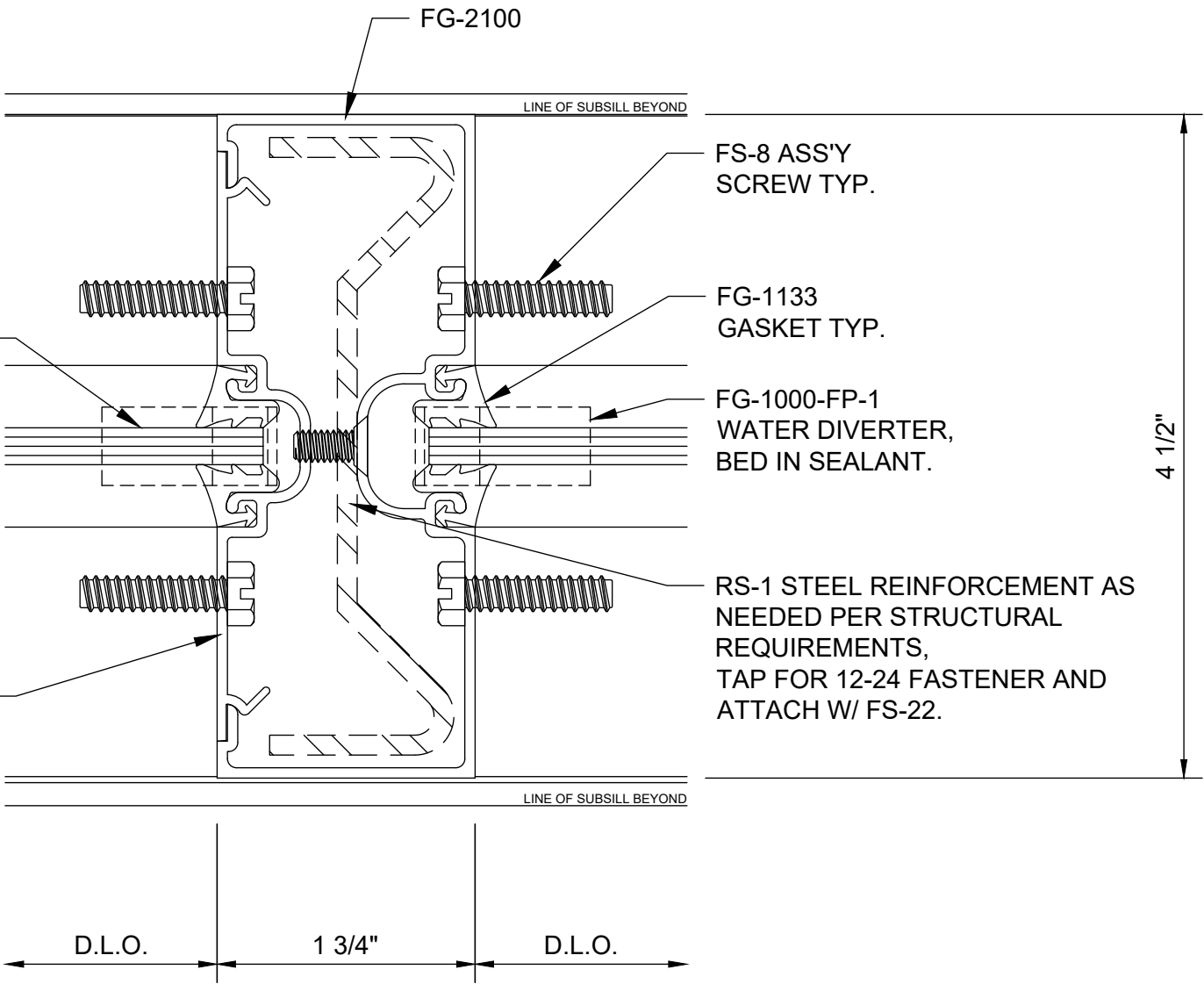


## FG-2000 Jamb Option - V0502

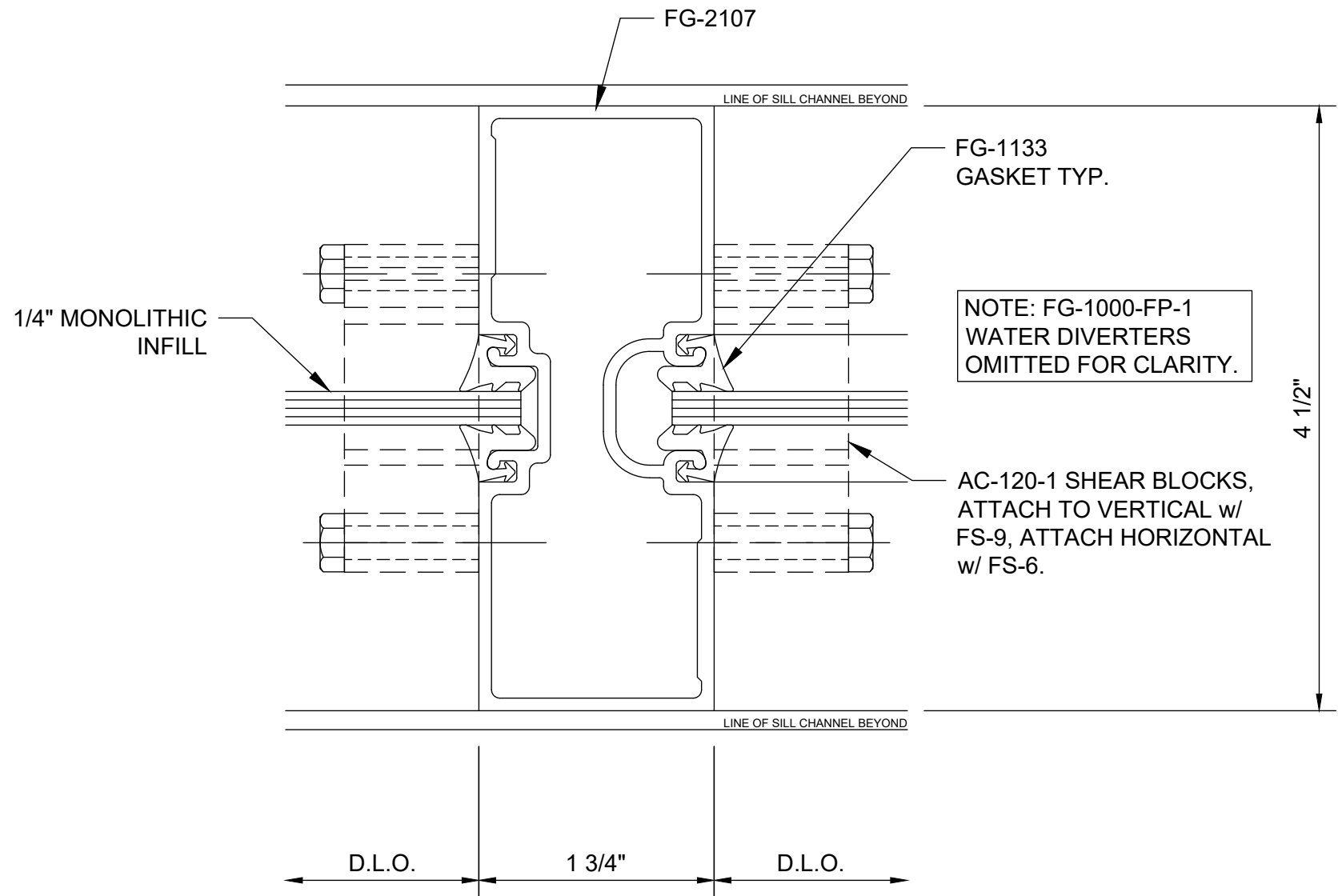


1/4" MONOLITHIC  
INFILL

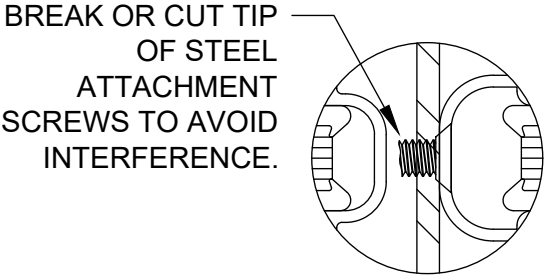
FG-2102  
FILLER



FG-2000  
Typical Vertical - V0503

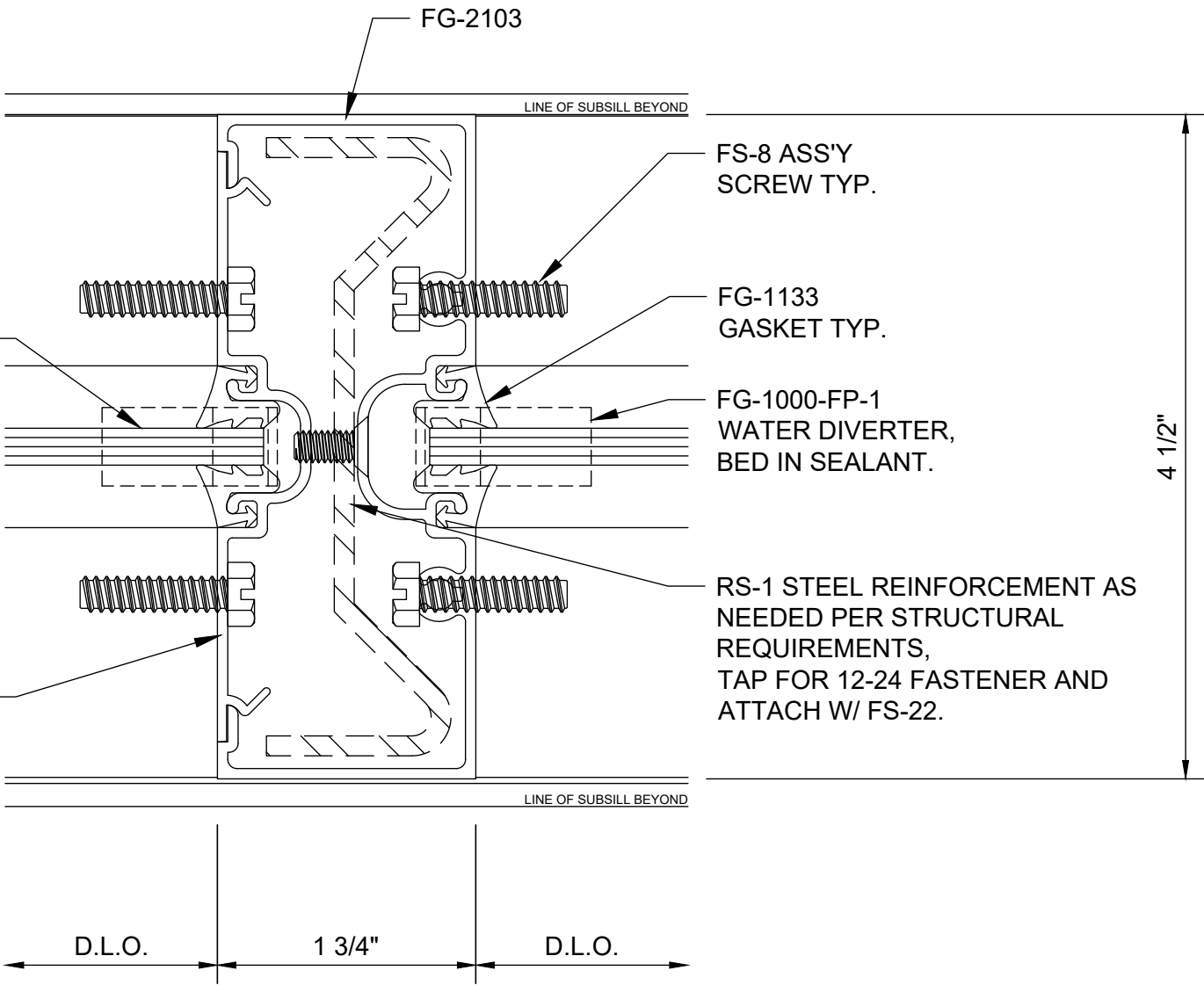


## FG-2000 Intermediate Vertical - Stack System - V0504

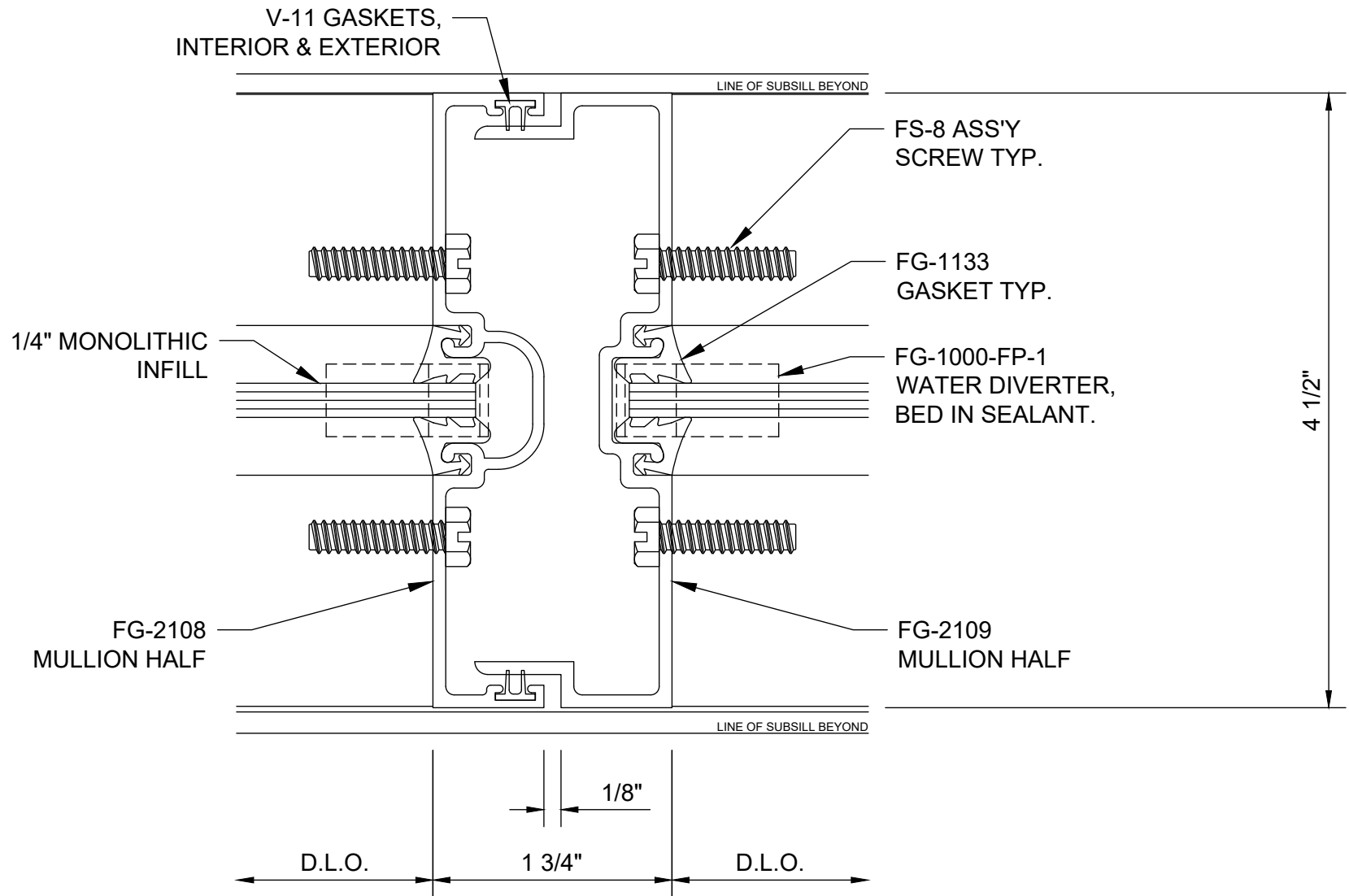


1/4" MONOLITHIC INFILL

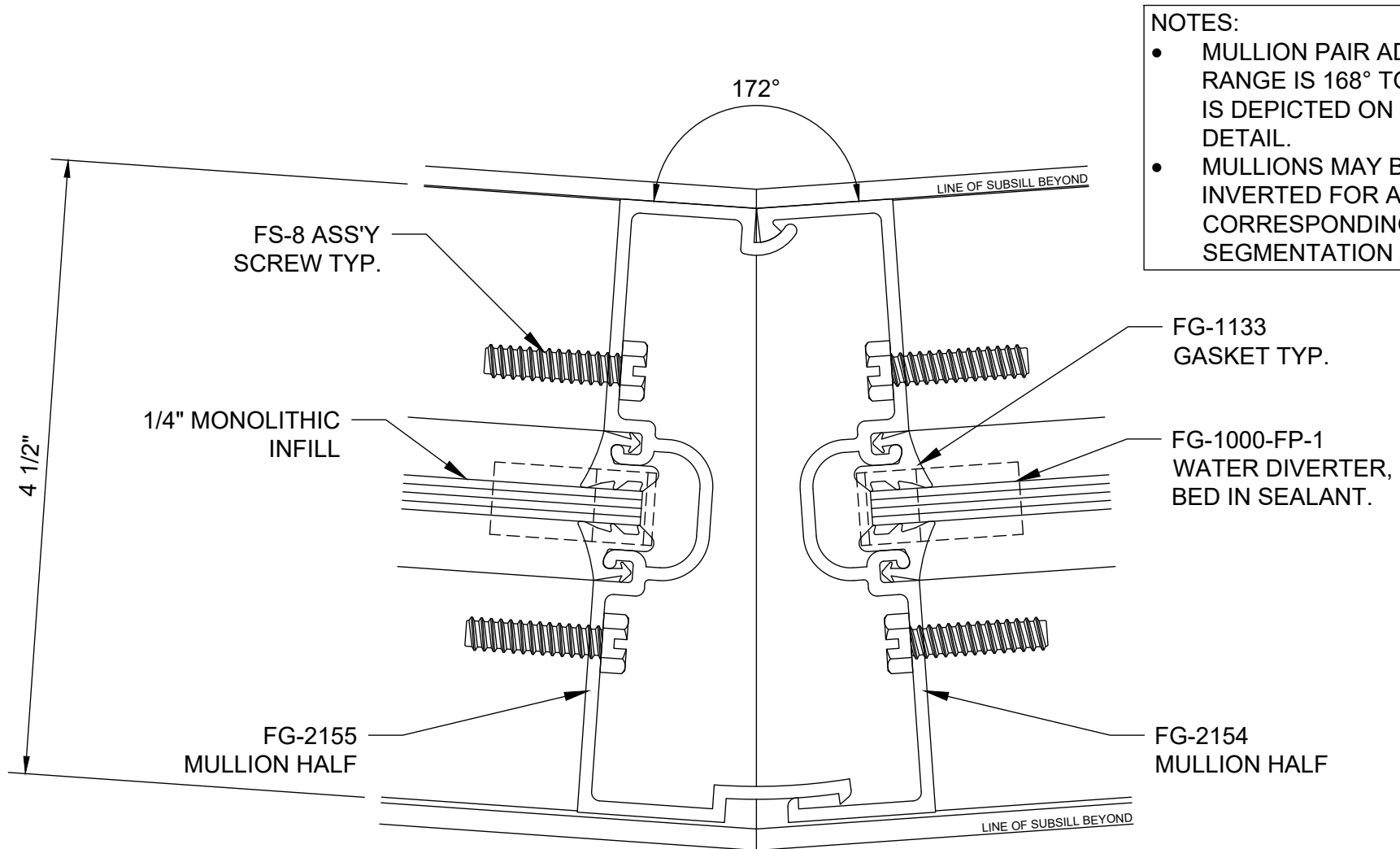
FG-2102 FILLER



FG-2000  
Vertical Option - V0506



## FG-2000 Expansion Vertical - V0507

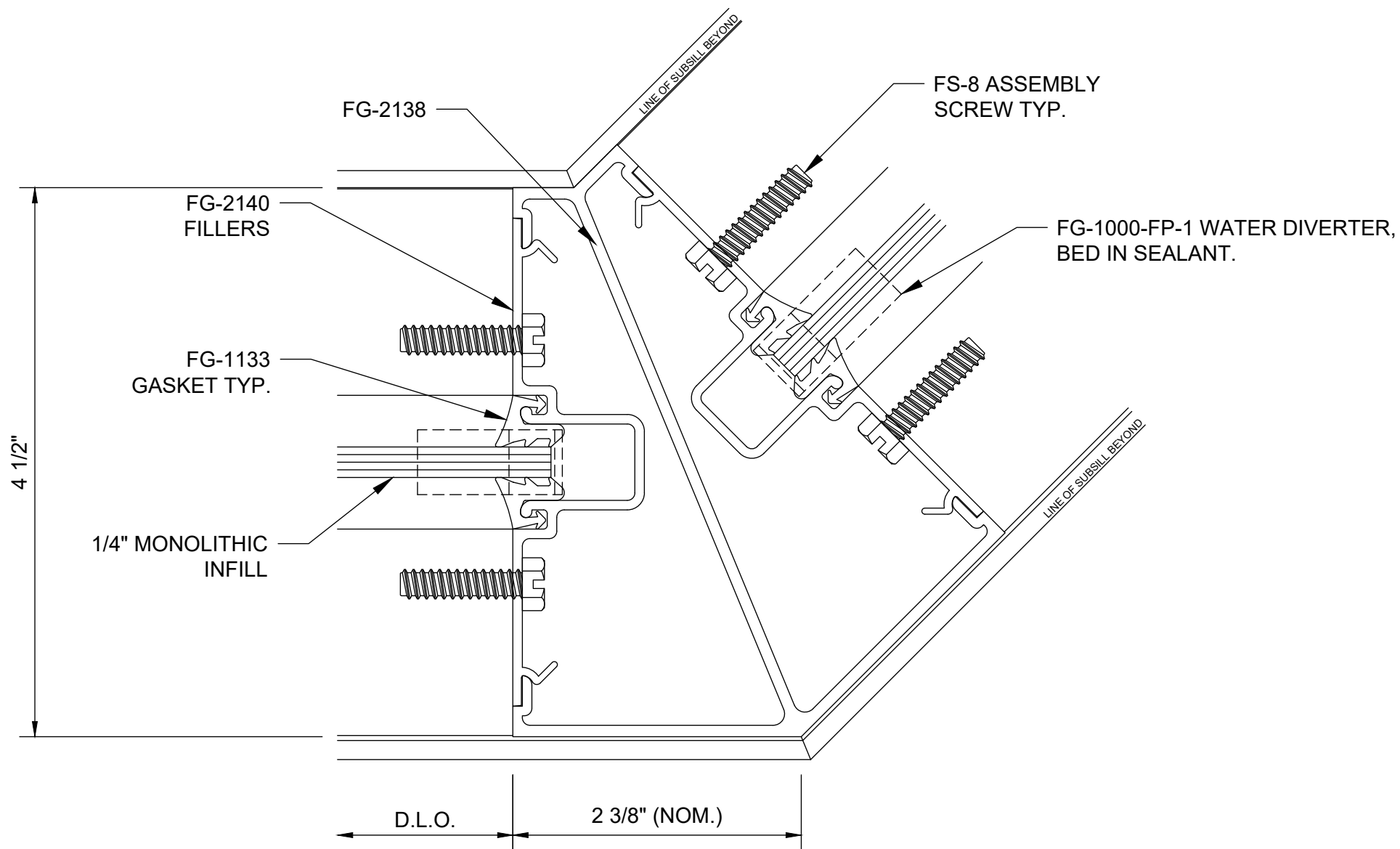


NOTES:

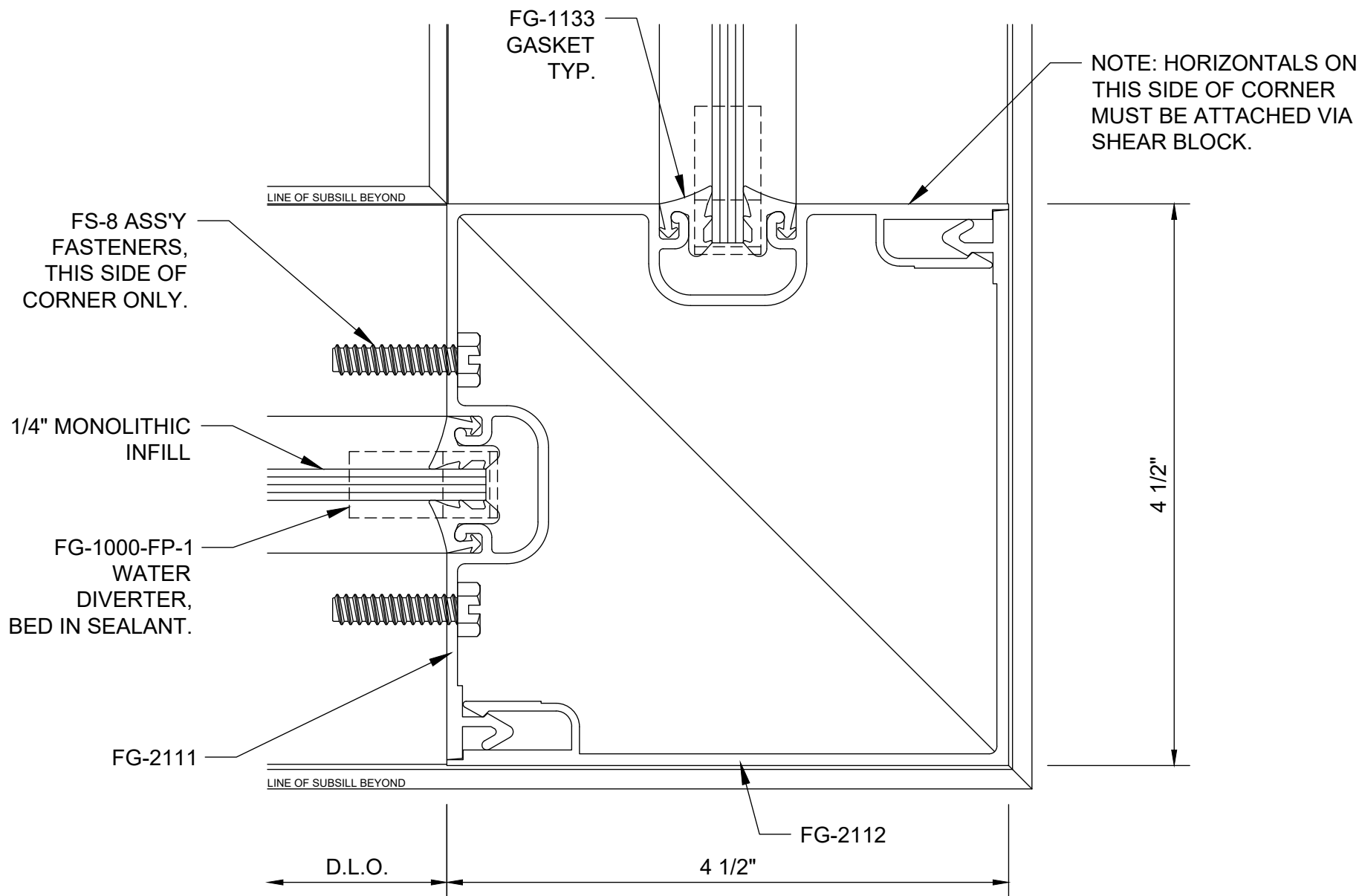
- MULLION PAIR ADJUSTMENT RANGE IS 168° TO 178°. 172° IS DEPICTED ON THIS DETAIL.
- MULLIONS MAY BE INVERTED FOR ACCESS TO CORRESPONDING INSIDE SEGMENTATION ANGLES.

## FG-2000 Adjustable Vertical - V0508

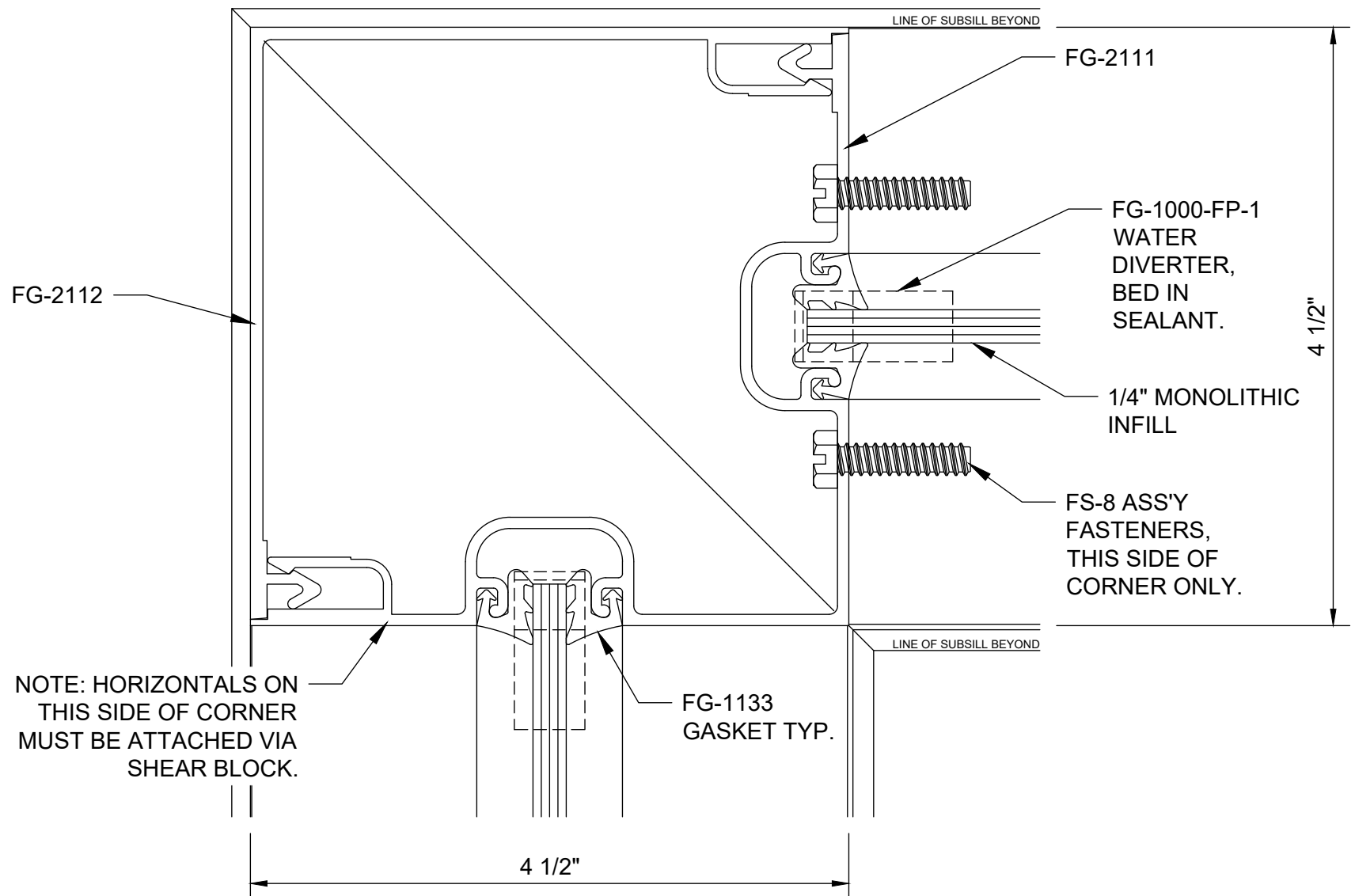




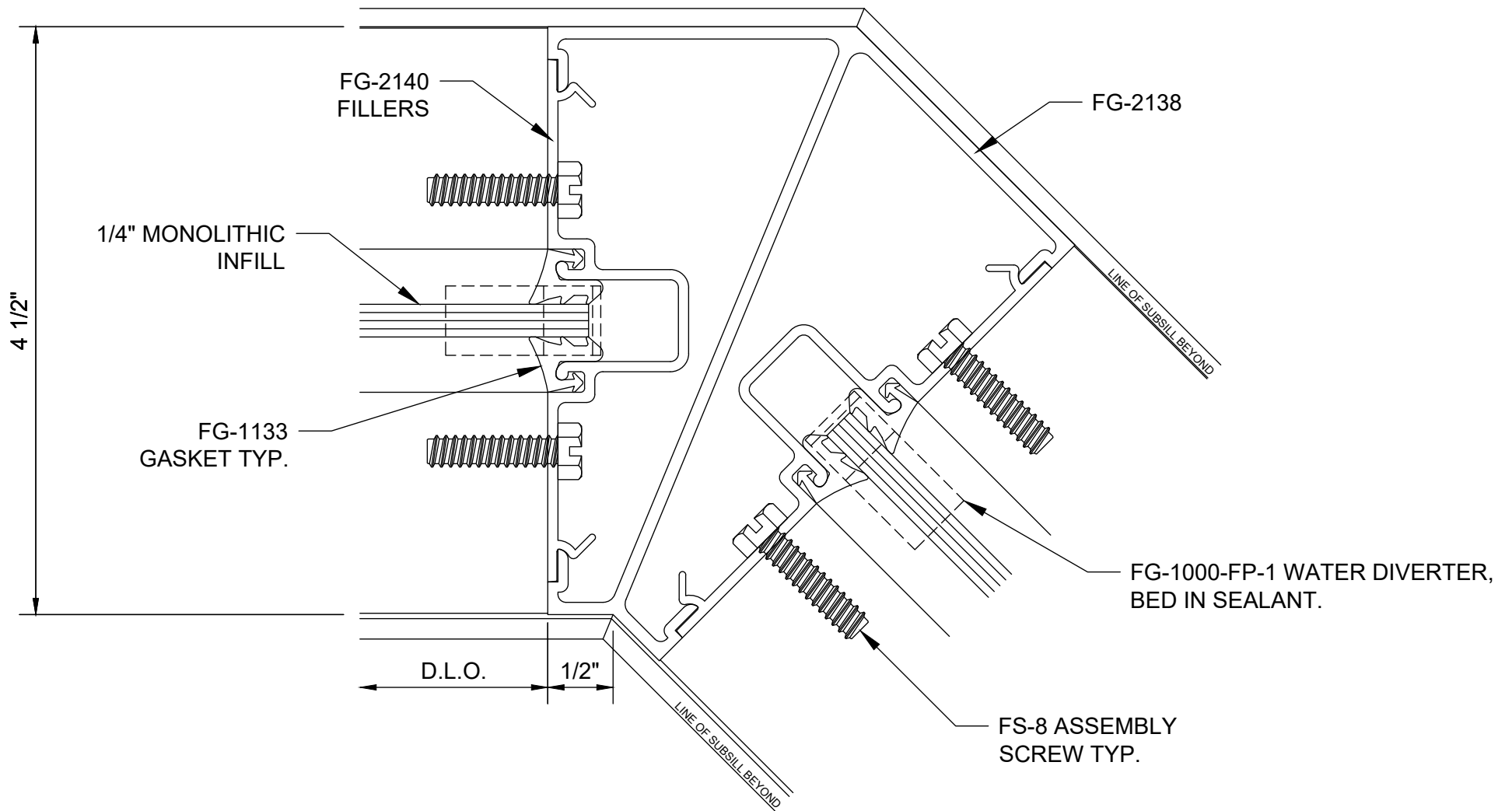
## FG-2000 135° Outside Corner - V0510



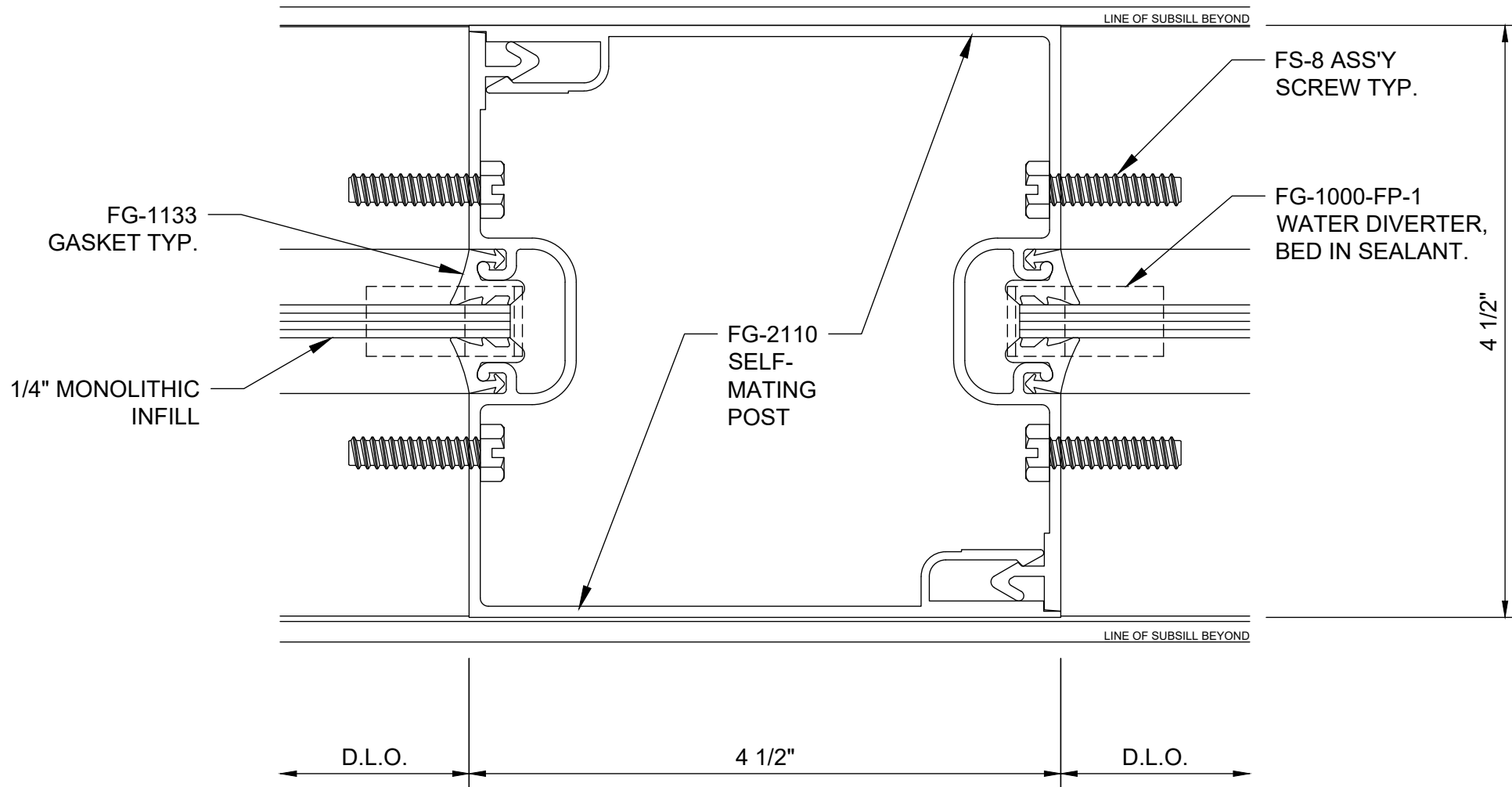
## FG-2000 90° Outside Corner - V0511



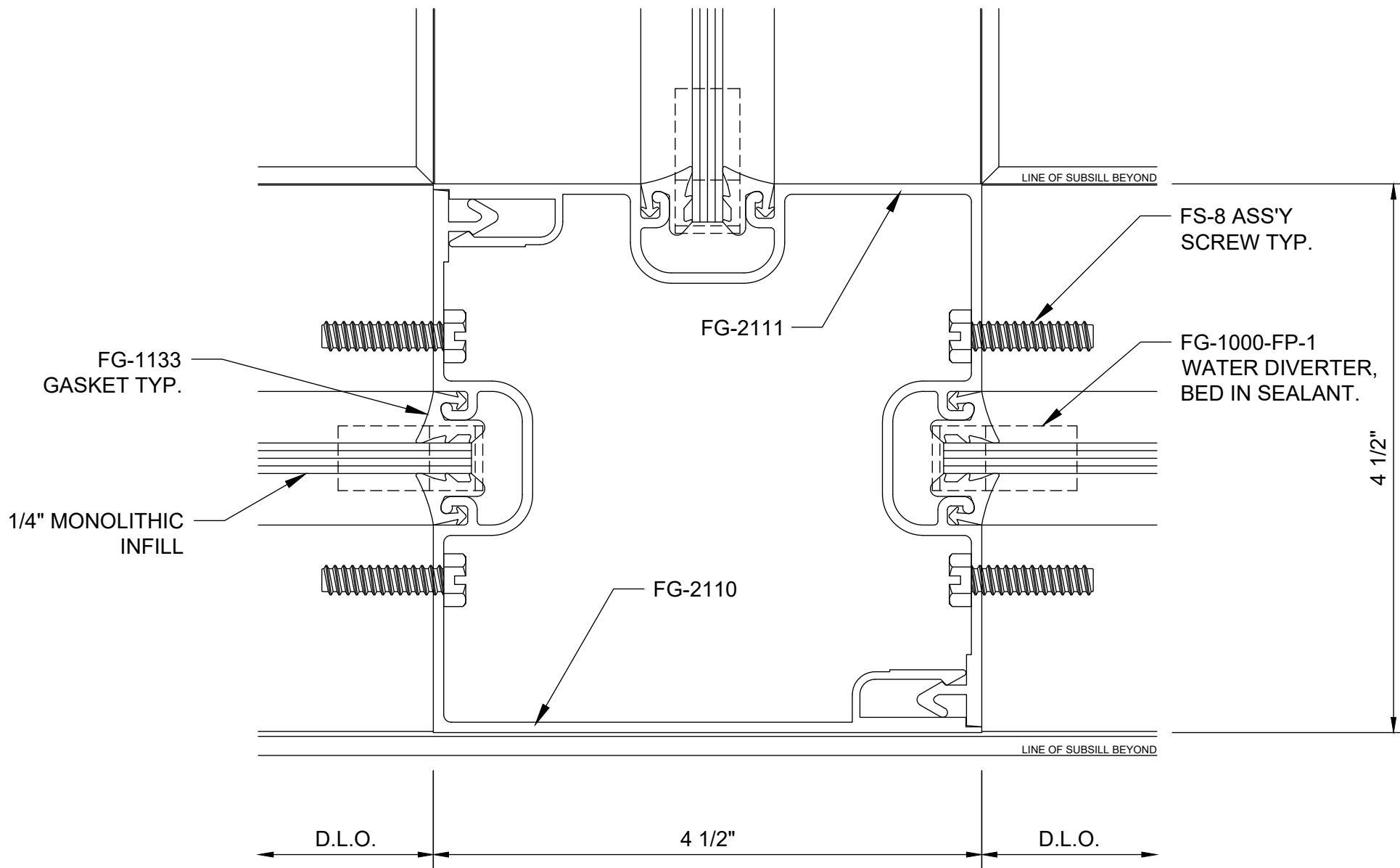
**FG-2000**  
**90° Inside Corner - V0512**



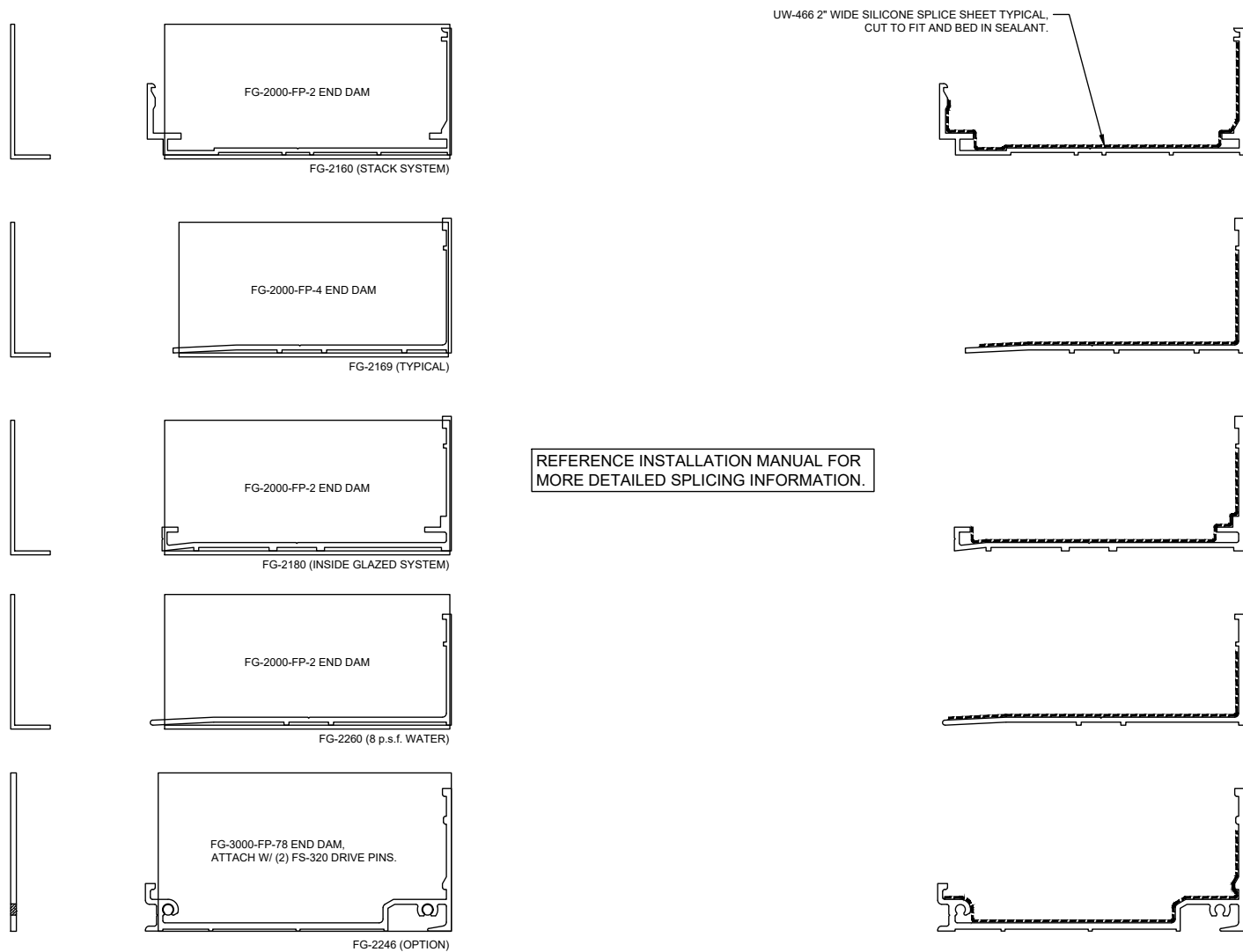
## FG-2000 135° Inside Corner - V0514



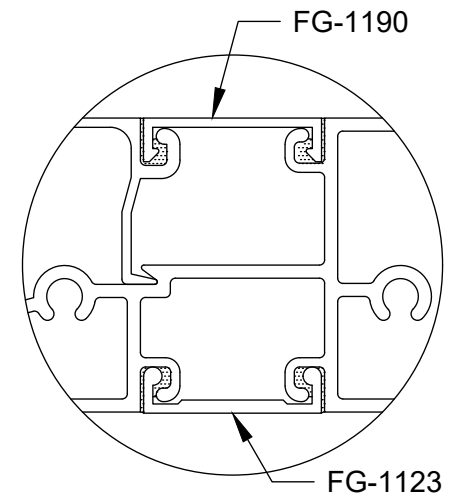
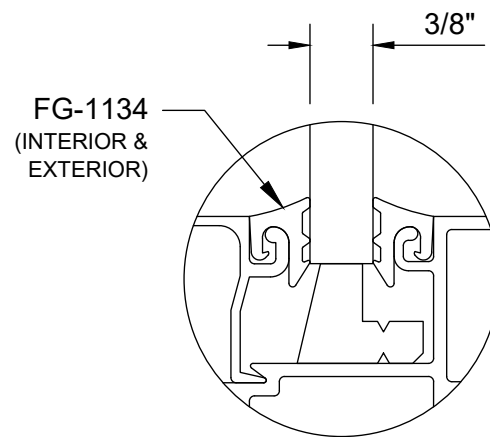
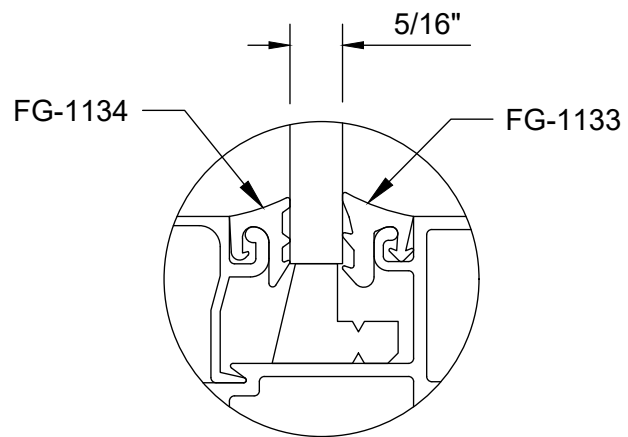
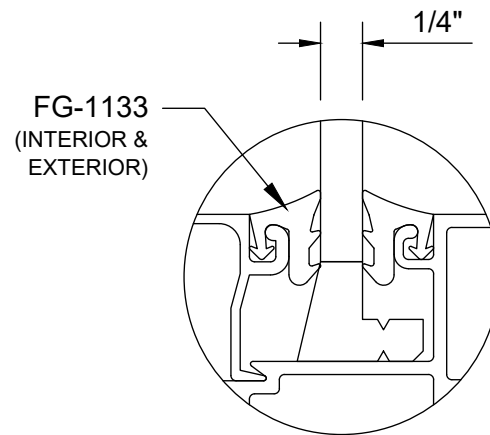
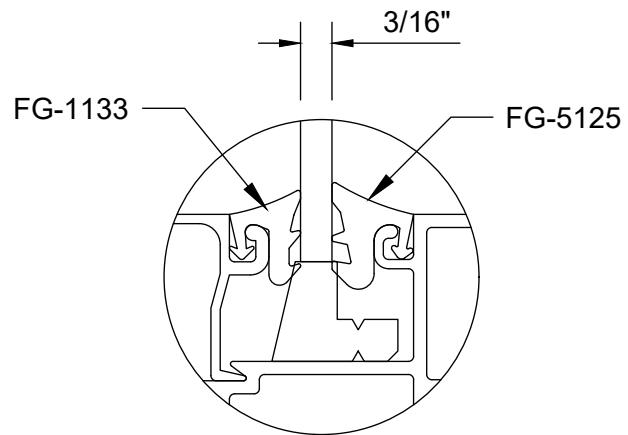
FG-2000  
180° Post - V0515



FG-2000  
3-Way Post - V0516



## FG-2000 Subsill End Dams and Splicing - M0501



**POCKET FILLER OPTIONS  
(SET IN SEALANT)**

## FG-2000 Glazing Options - M0548