

Oldcastle BuildingEnvelope®

1-866-Oldcastle (653-2278) - www.obe.com

Reliance™-HTC

2-1/2" X 7-1/4" w/ 1-3/4" Triple Glazed Typical Infill

(Drawing numbers---i.e., V9701---used as CAD detail reference only)

Elevation

Horizontal Details

H9701	Head
H9702	Intermediate Horizontal
H9703	Horizontal at Vision over Spandrel
H9704	Horizontal at Vision over Spandrel w/ Back Pan
H9708	Sill
H9709	Horizontal at Operable Window - Flat Frame
H9710	Horizontal at Operable Window - Pocket Frame

Vertical Details

V9701	Jamb
V9702	Typical Vertical
V9703	Jamb at Spandrel
V9704	Intermediate Vertical at Spandrel
V9705	Jamb at Spandrel w/ Back Pan
V9706	Intermediate Vertical at Spandrel w/ Back Pan

V9707	Vertical at Operable Window - Flat Frame
V9708	Vertical at Operable Window - Pocket Frame
V9716	SSG Vertical
V9718	SSG Vertical at Spandrel
V9719	Vertical at SSG to Captured Transition

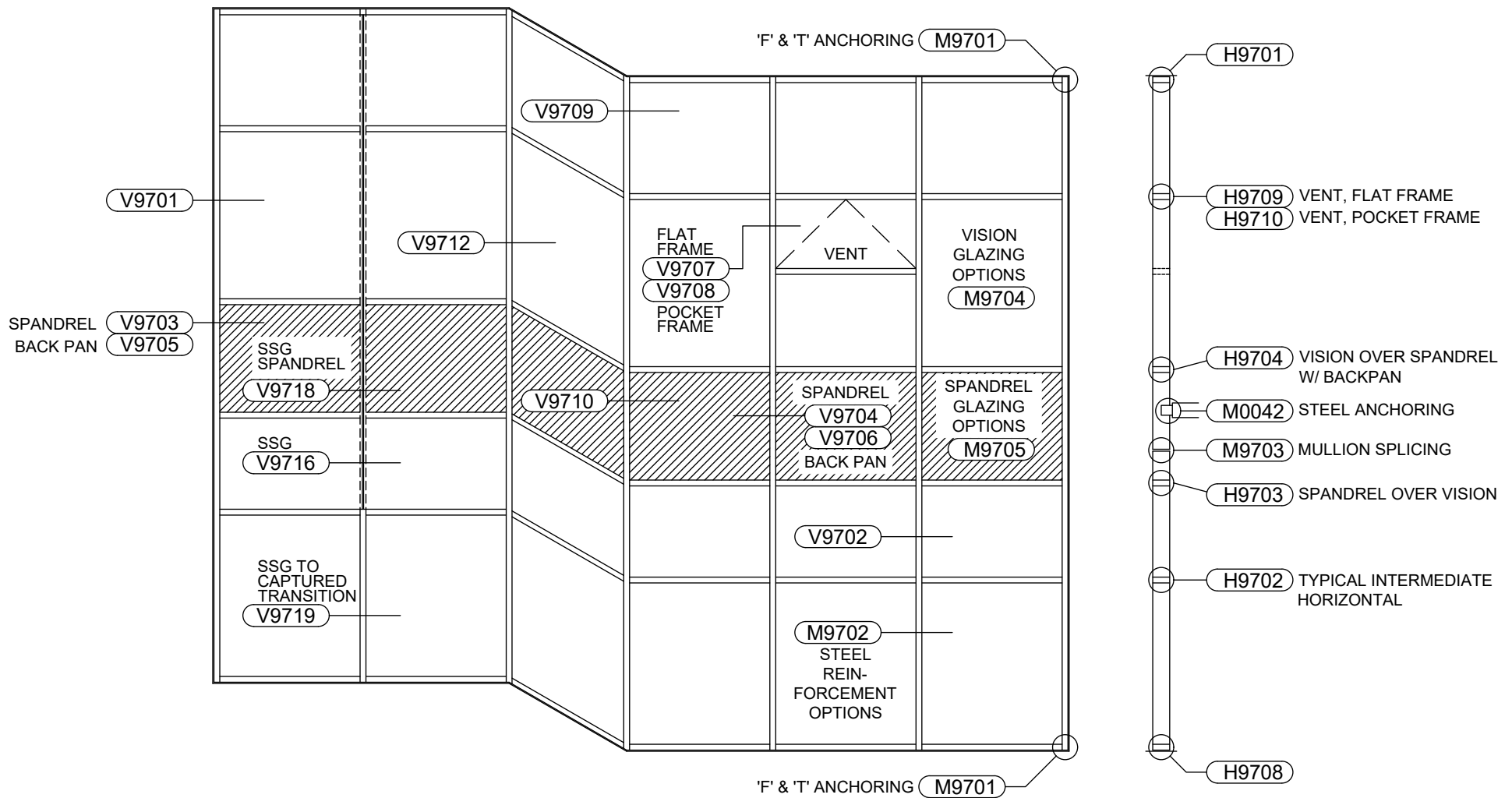
Corner Details

V9709	90° Outside Corner
V9710	90° Outside Corner at Spandrel
V9712	90° Inside Corner

Misc. Details

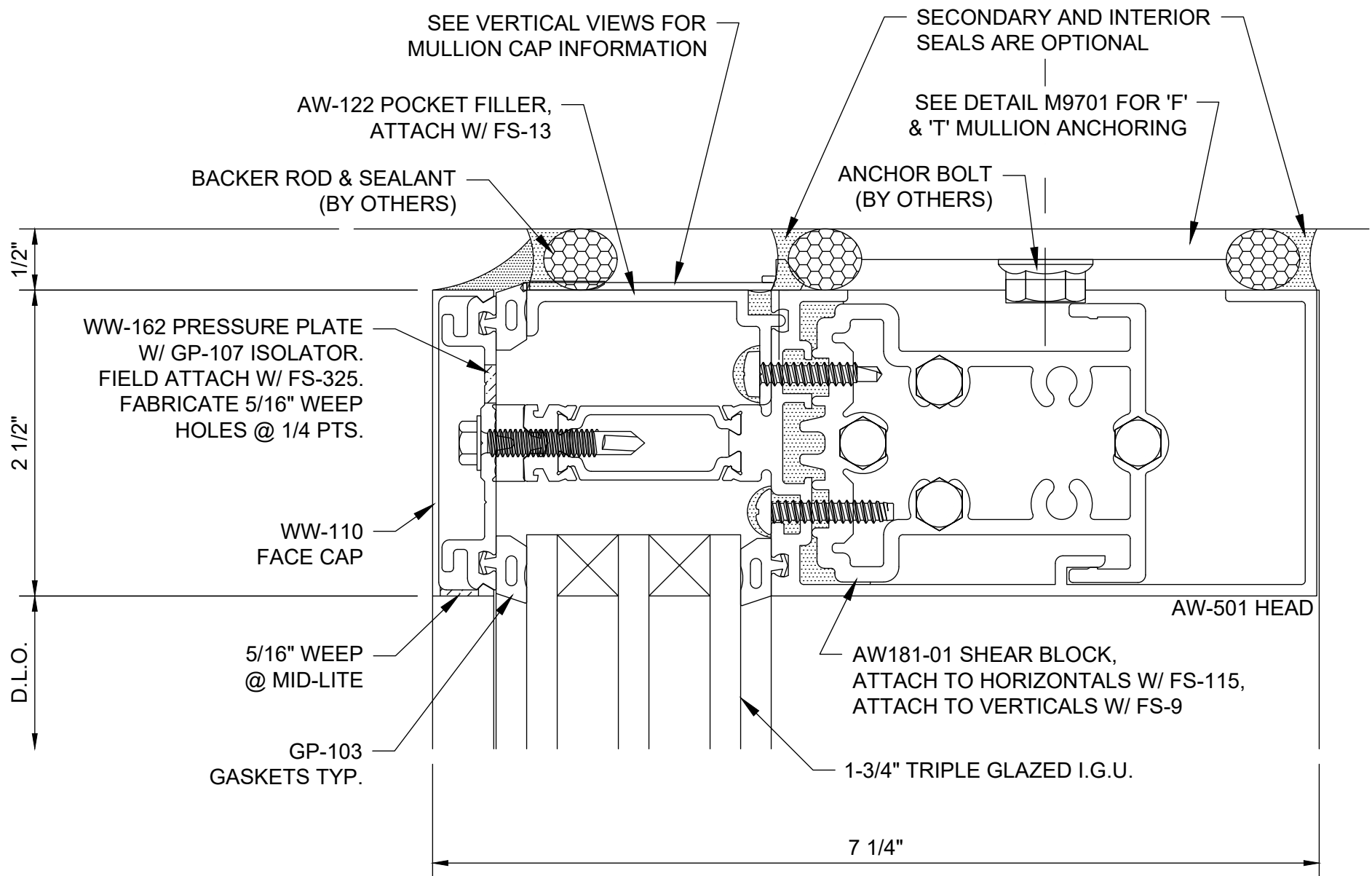
M0042	Steel Mid-Span Anchoring
M9701	'F' & 'T' Mullion Anchoring
M9702	Steel Reinforcement Options
M9703	Mullion Splicing
M9704	Vision Glazing Options
M9705	Spandrel Glazing Options

Table of Contents

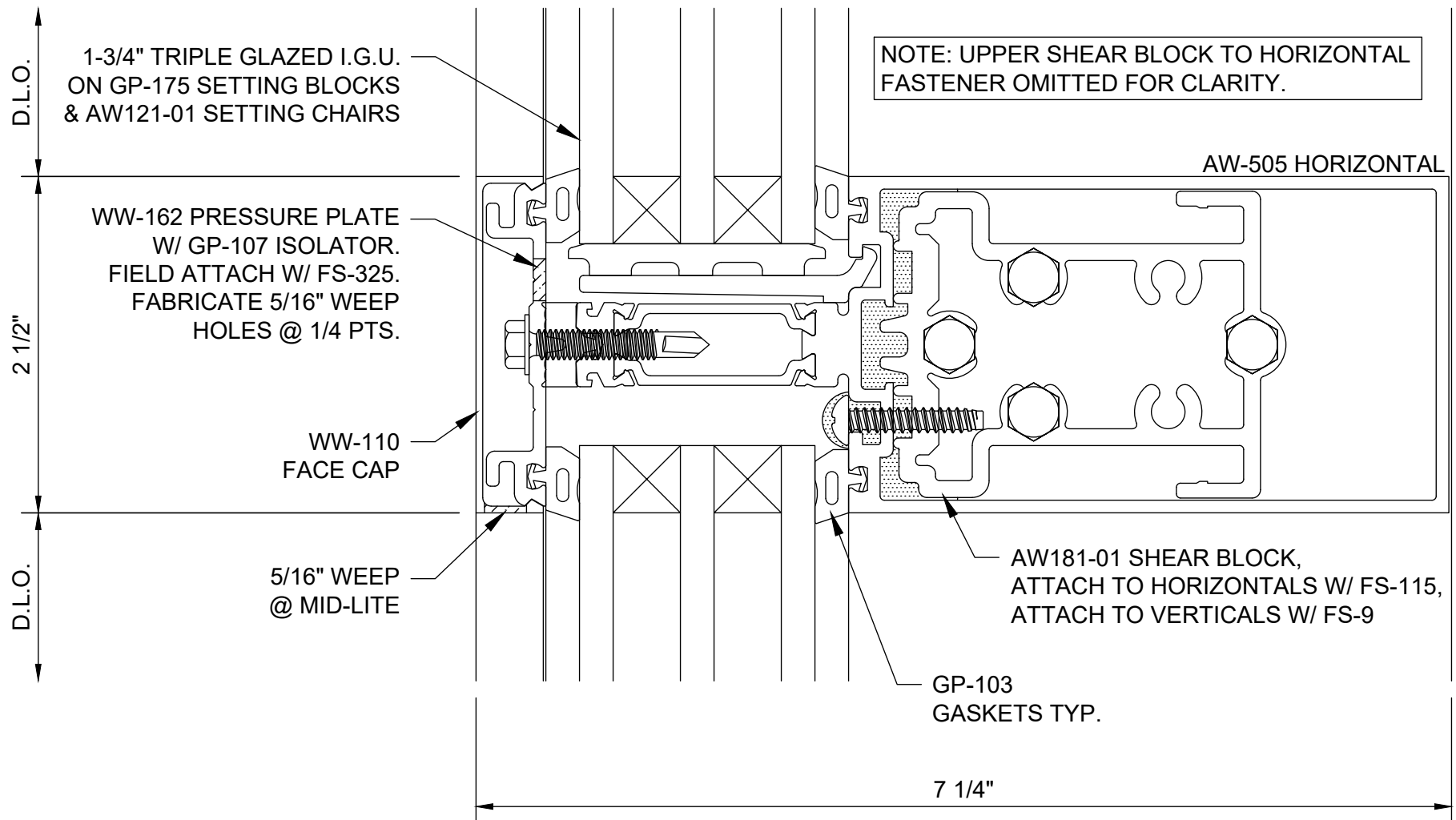


Reliance™-HTC

2-1/2" x 7-1/4" w/ 1-3/4" Triple Glazed Typical Infill - Elevation



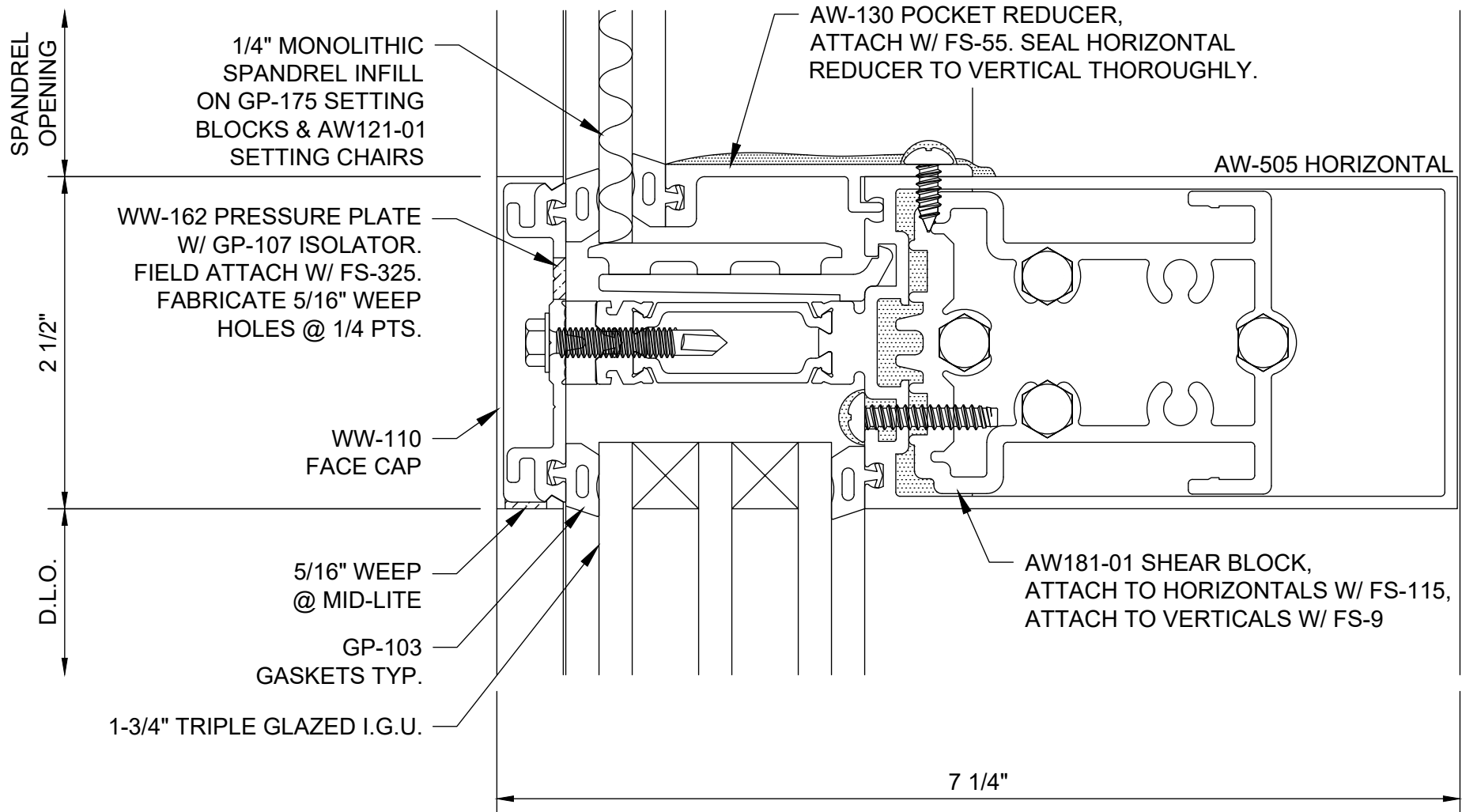
Reliance™-HTC Head - H9701



Reliance™-HTC Intermediate Horizontal - H9702

NOTES:

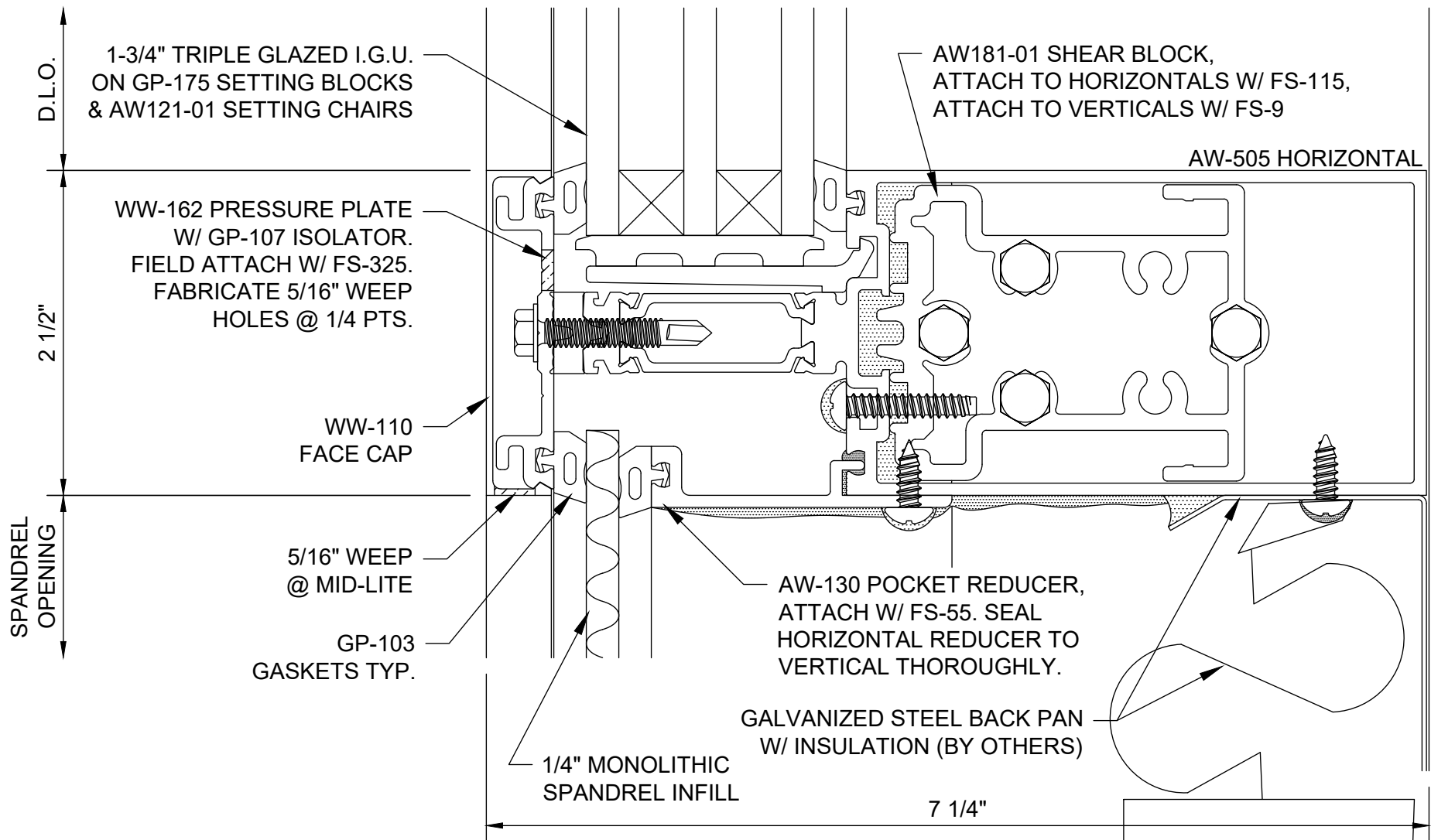
1. UPPER SHEAR BLOCK TO HORIZONTAL FASTENER OMITTED FOR CLARITY.
2. 1/4" SPANDREL INFILL SHOWN; SEE DETAIL M9705 FOR ADDITIONAL SPANDREL INFILL OPTIONS.



Reliance™-HTC Horizontal at Spandrel over Vision - H9703

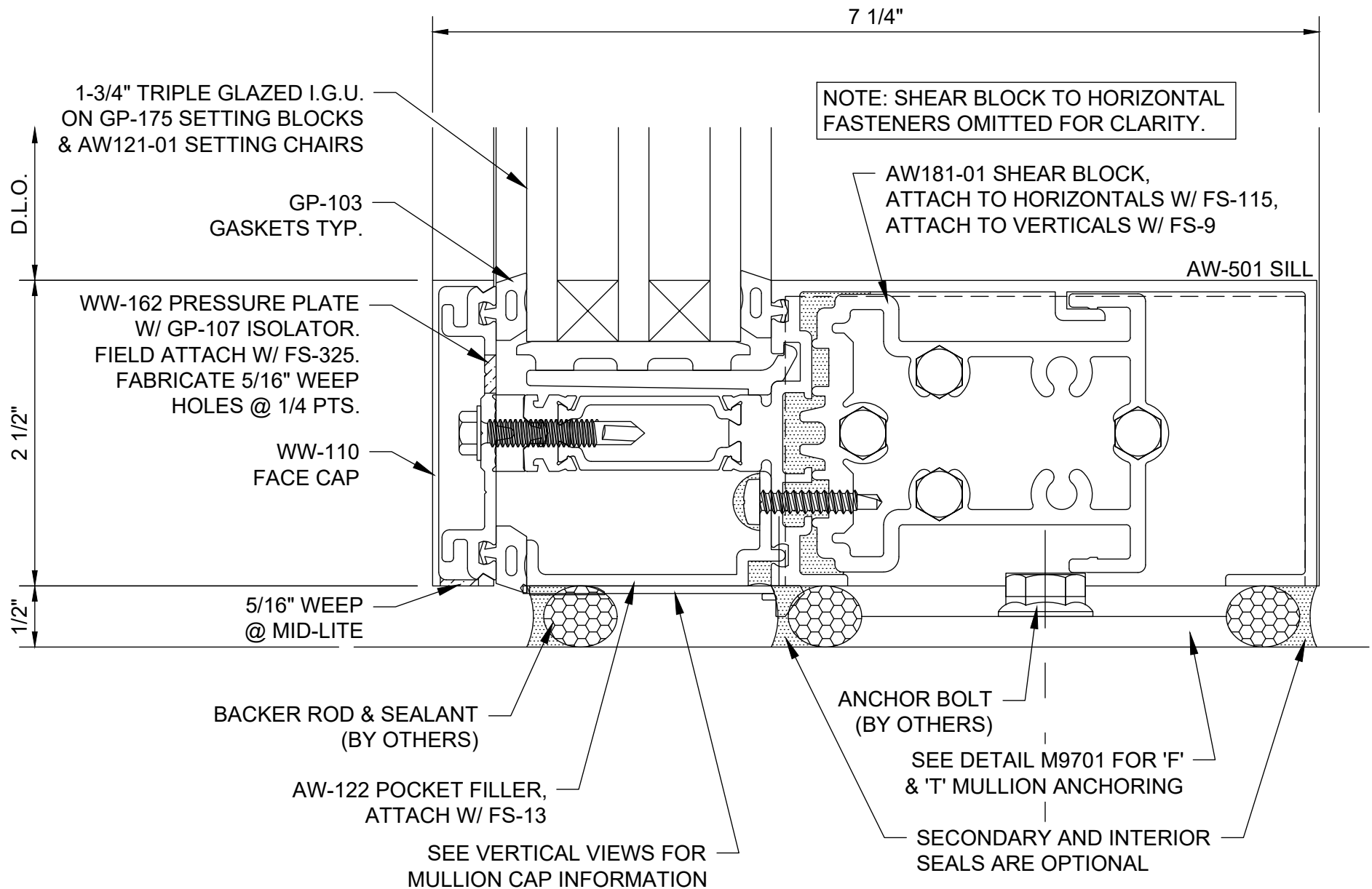
NOTES:

1. UPPER SHEAR BLOCK TO HORIZONTAL FASTENER OMITTED FOR CLARITY.
2. 1/4" SPANDREL INFILL SHOWN AT BACKPAN; SEE DETAIL M9705 FOR ADDITIONAL SPANDREL INFILL OPTIONS.

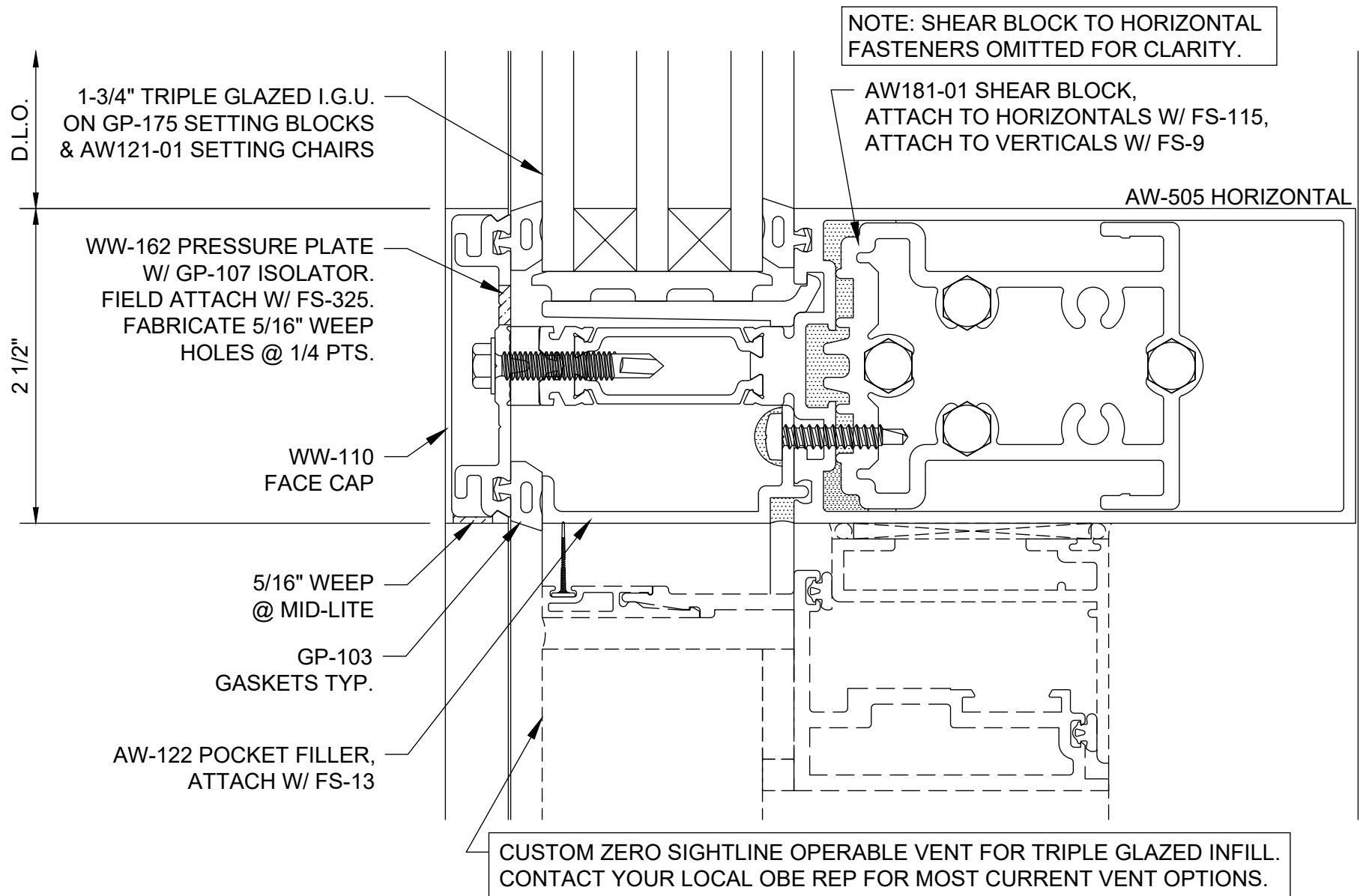


Reliance™-HTC

Horizontal at Vision over Spandrel w/ Backpan - H9704

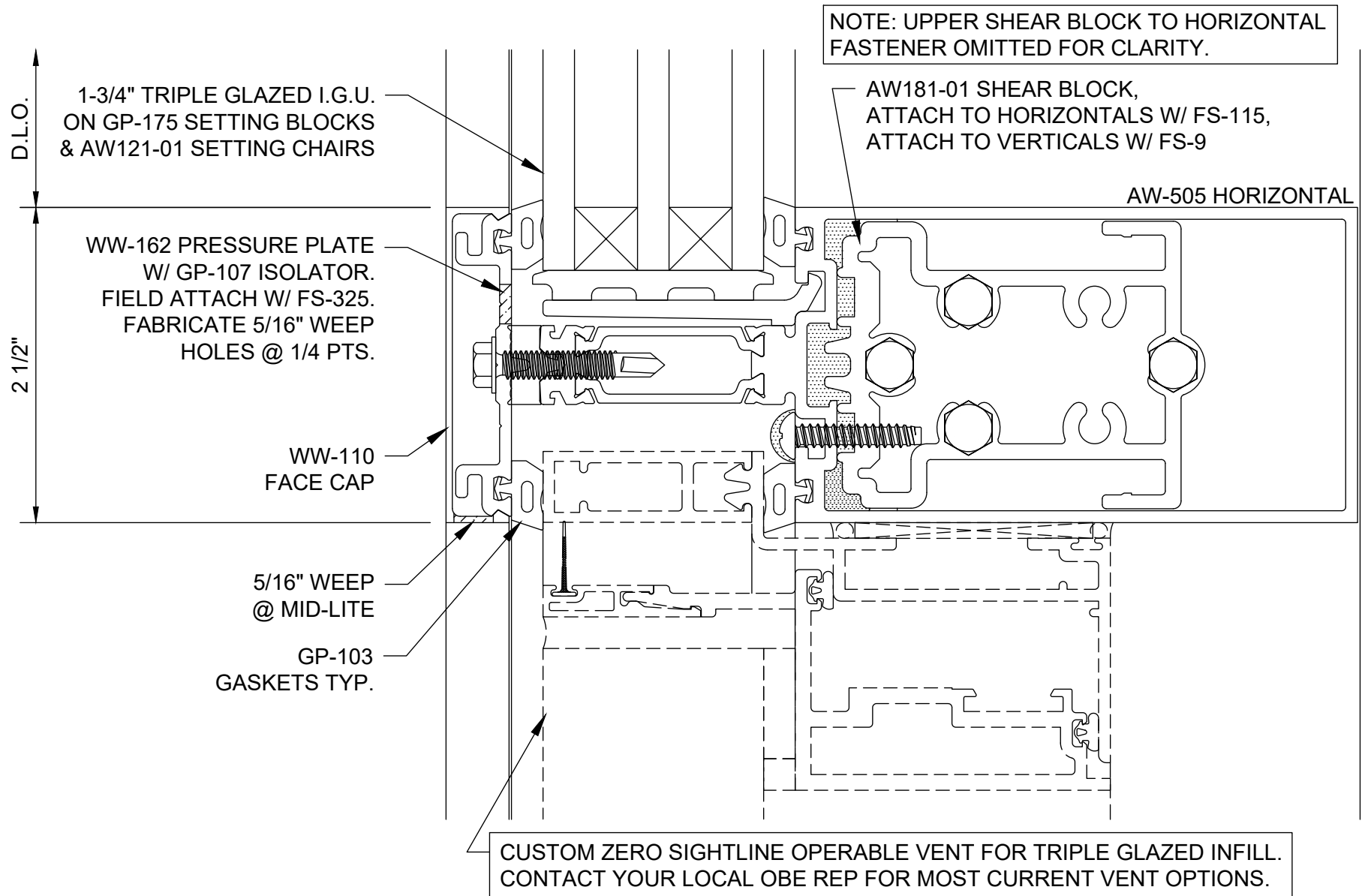


Reliance™-HTC Sill - H9708



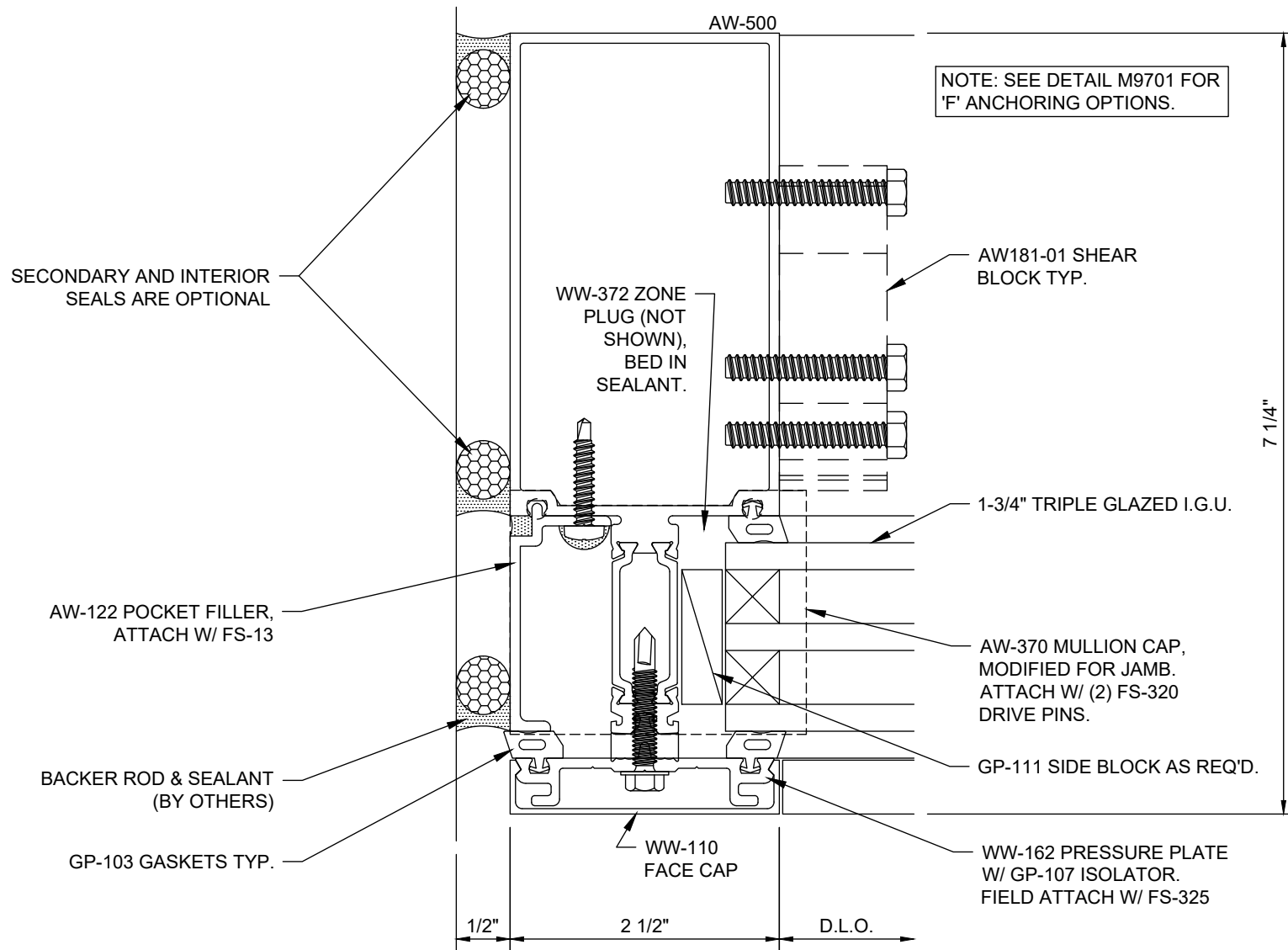
Reliance™-HTC

Horizontal at Operable Window - Flat Frame - H9709

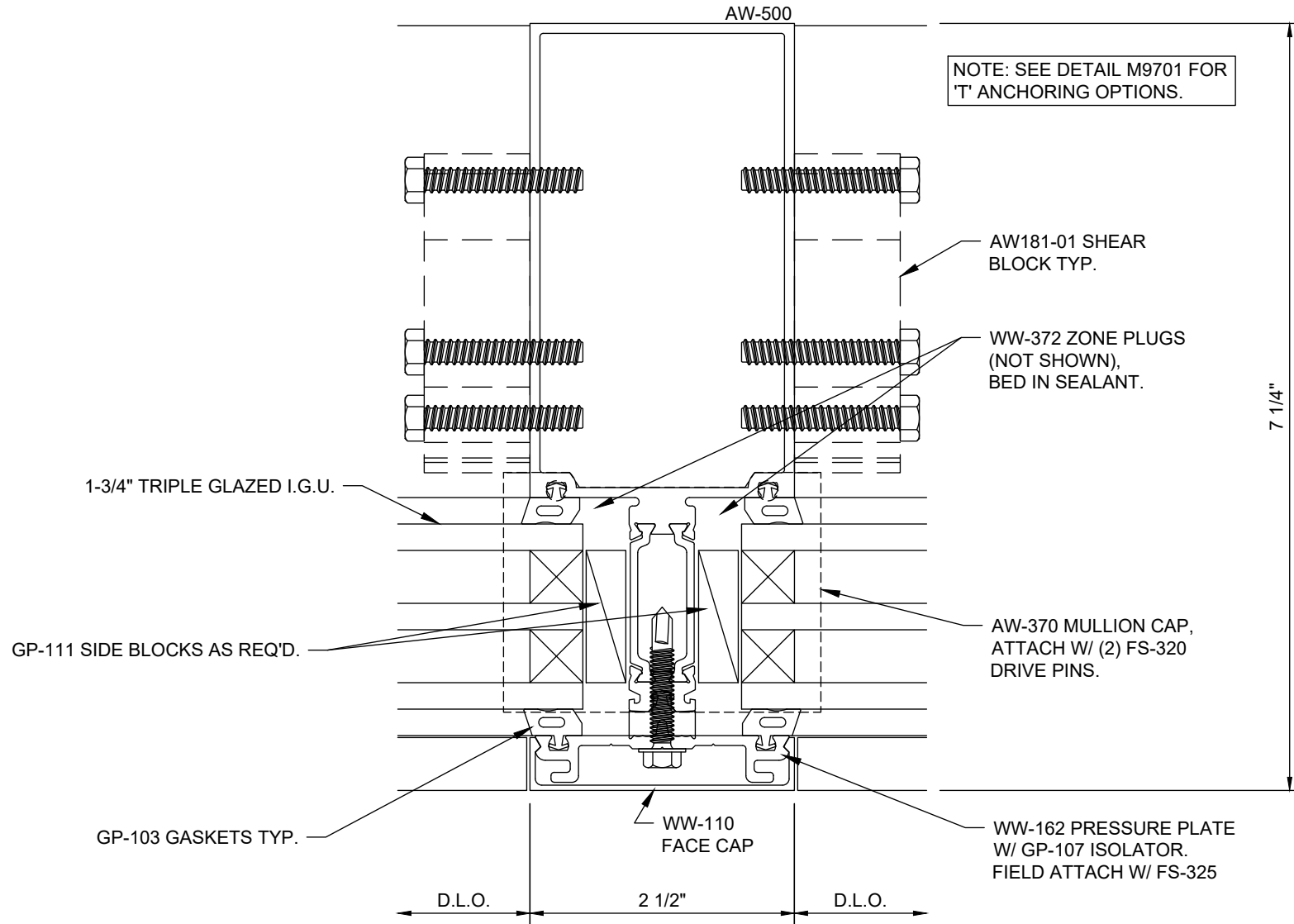


Reliance™-HTC

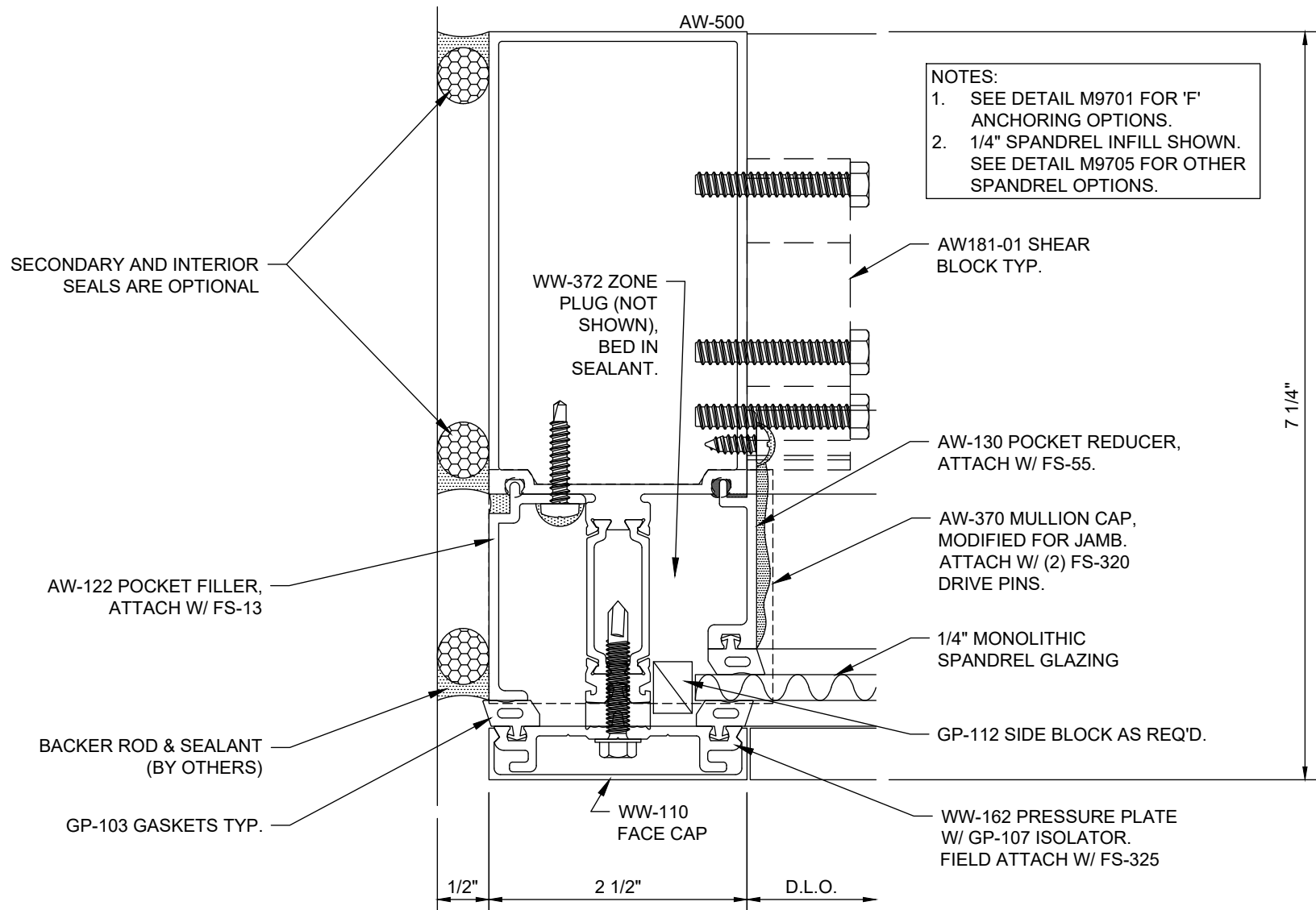
Horizontal at Operable Window - Pocket Frame - H9710



Reliance™-HTC Jamb - V9701



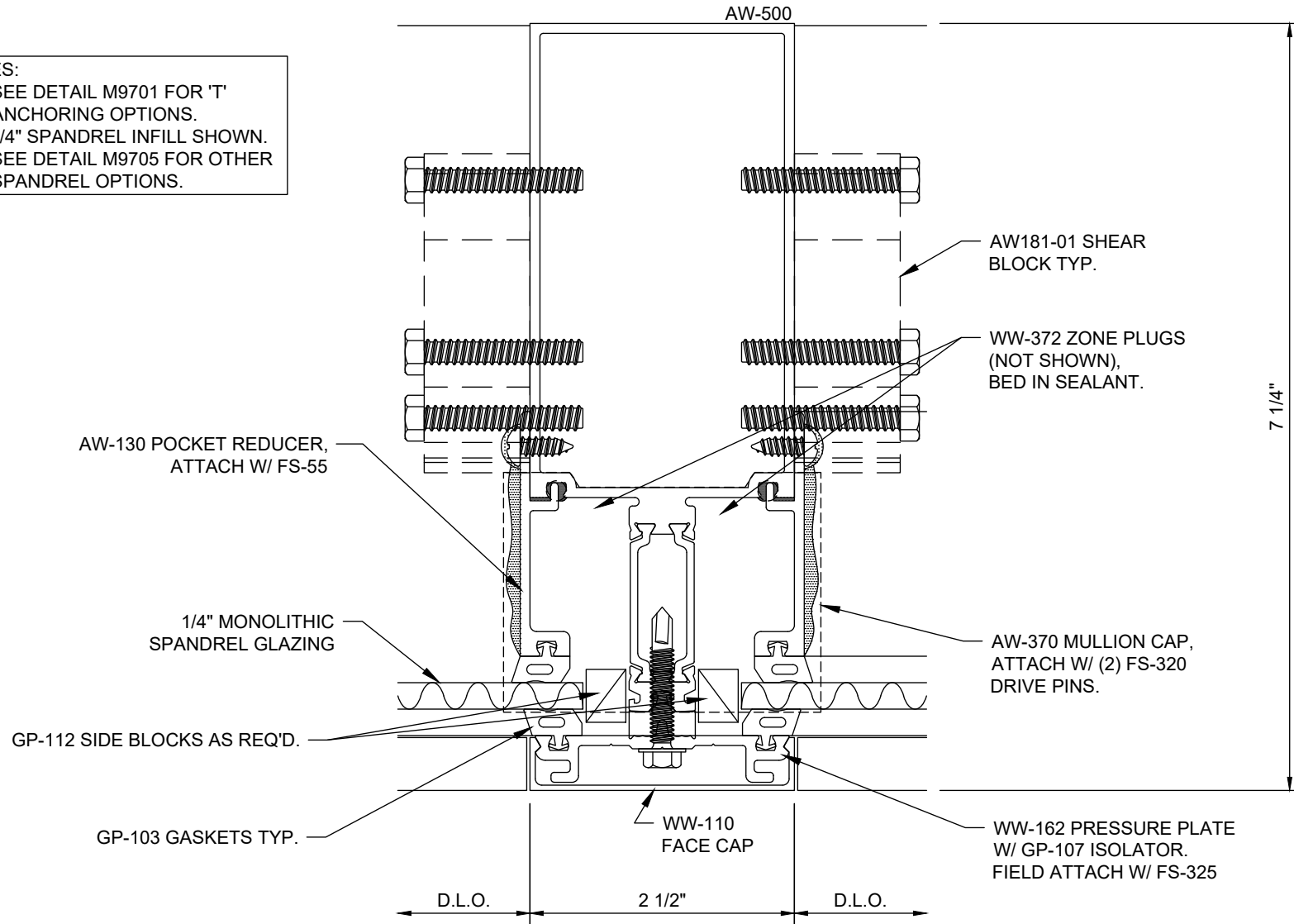
Reliance™-HTC Typical Vertical - V9702



Reliance™-HTC Jamb at Spandrel - V9703

NOTES:

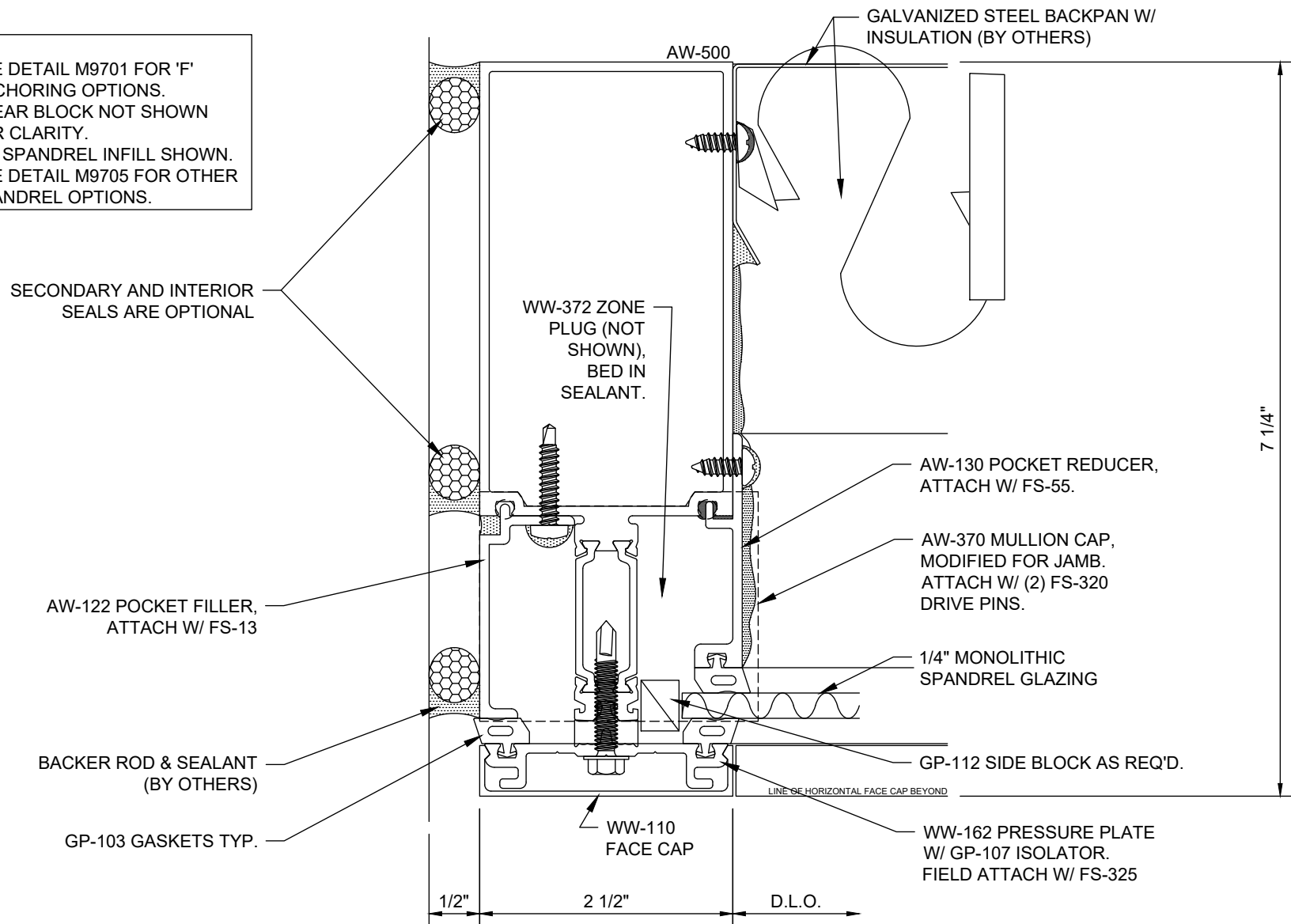
1. SEE DETAIL M9701 FOR 'T' ANCHORING OPTIONS.
2. 1/4" SPANDREL INFILL SHOWN. SEE DETAIL M9705 FOR OTHER SPANDREL OPTIONS.



Reliance™-HTC Vertical at Spandrel - V9704

NOTES:

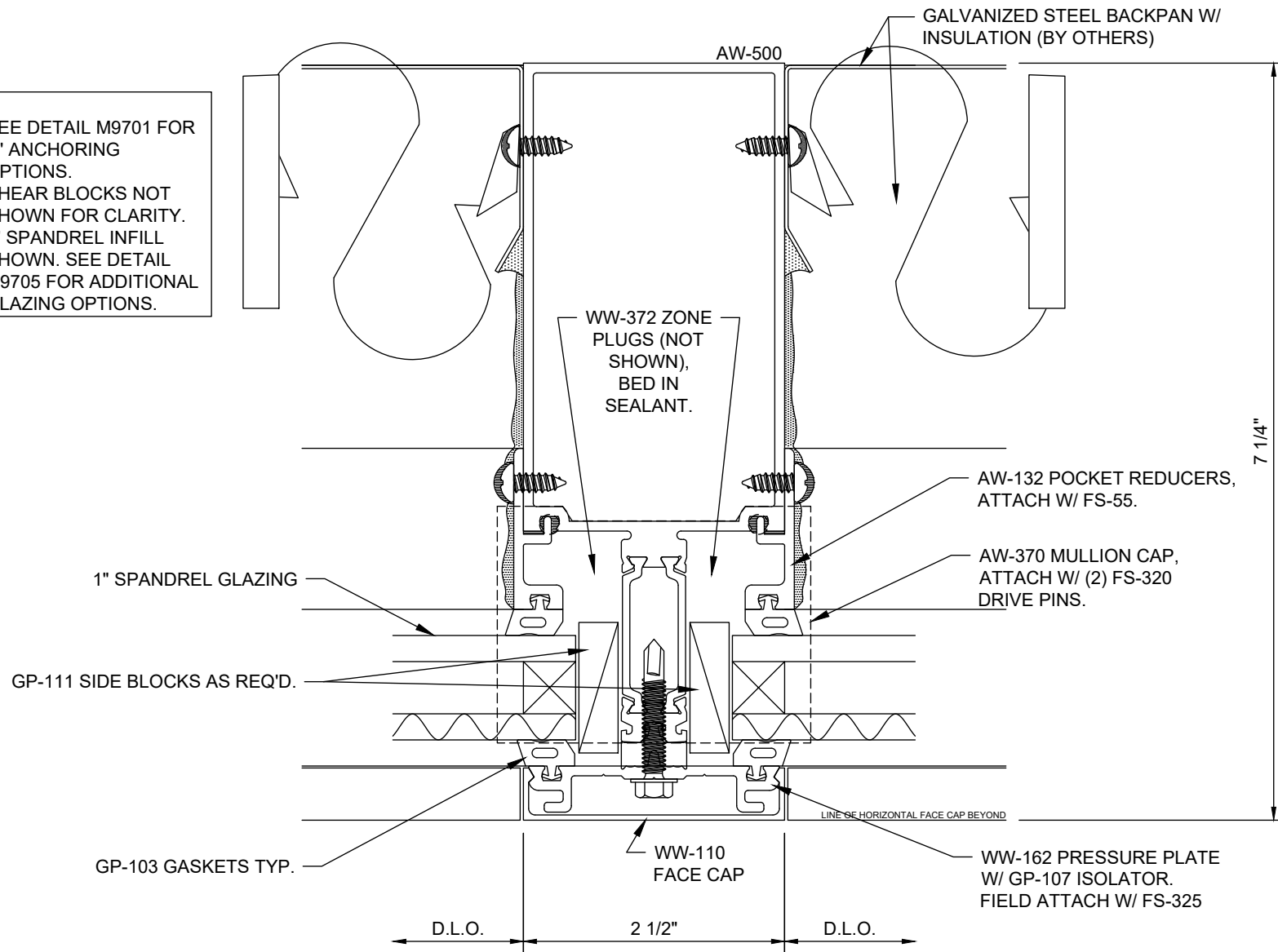
1. SEE DETAIL M9701 FOR 'F' ANCHORING OPTIONS.
2. SHEAR BLOCK NOT SHOWN FOR CLARITY.
3. 1/4" SPANDREL INFILL SHOWN. SEE DETAIL M9705 FOR OTHER SPANDREL OPTIONS.



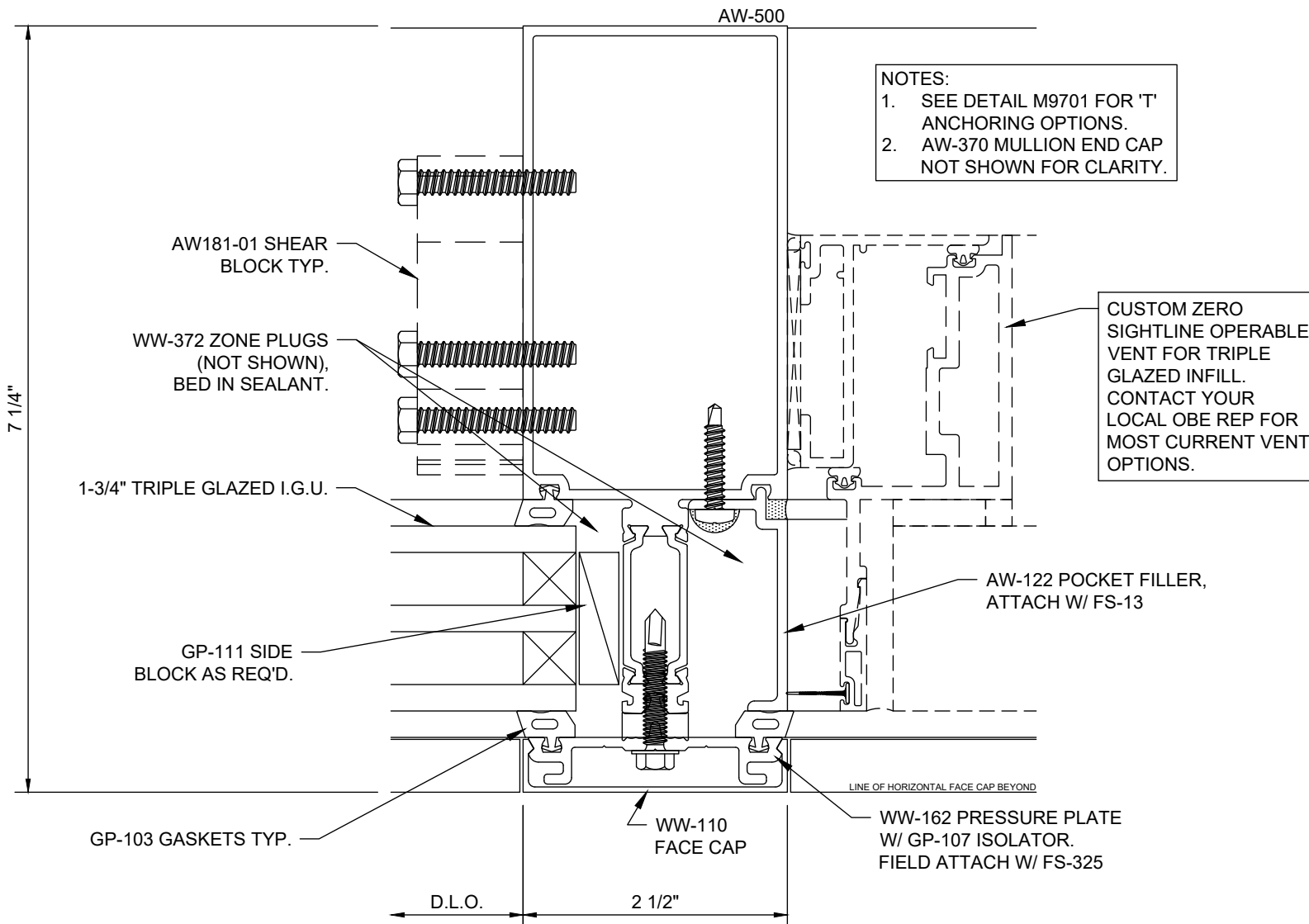
Reliance™-HTC Jamb at Spandrel w/ Backpan - V9705

NOTES:

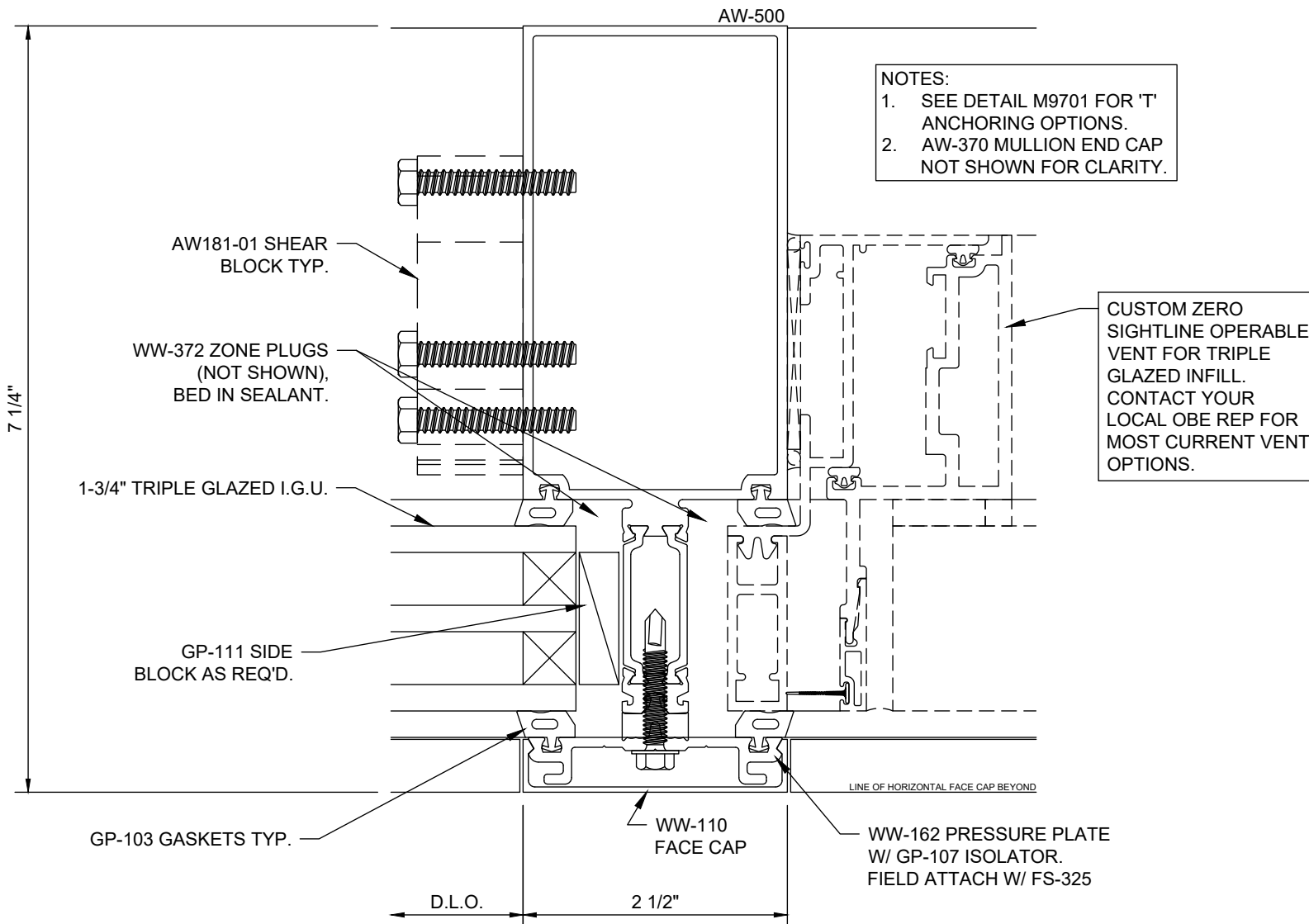
1. SEE DETAIL M9701 FOR 'T' ANCHORING OPTIONS.
2. SHEAR BLOCKS NOT SHOWN FOR CLARITY.
3. 1" SPANDREL INFILL SHOWN. SEE DETAIL M9705 FOR ADDITIONAL GLAZING OPTIONS.



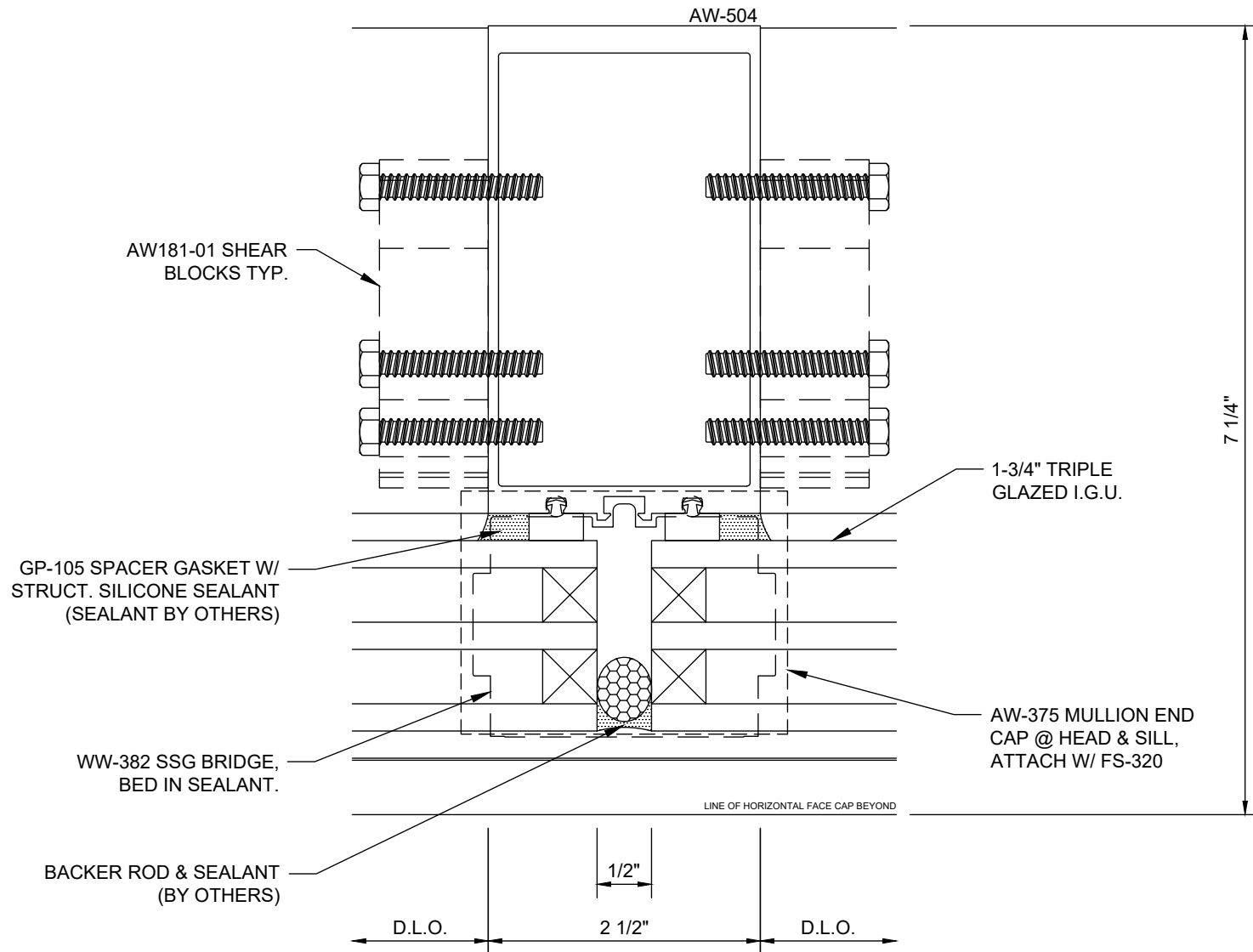
Reliance™-HTC Vertical at Spandrel w/ Backpan - V9706



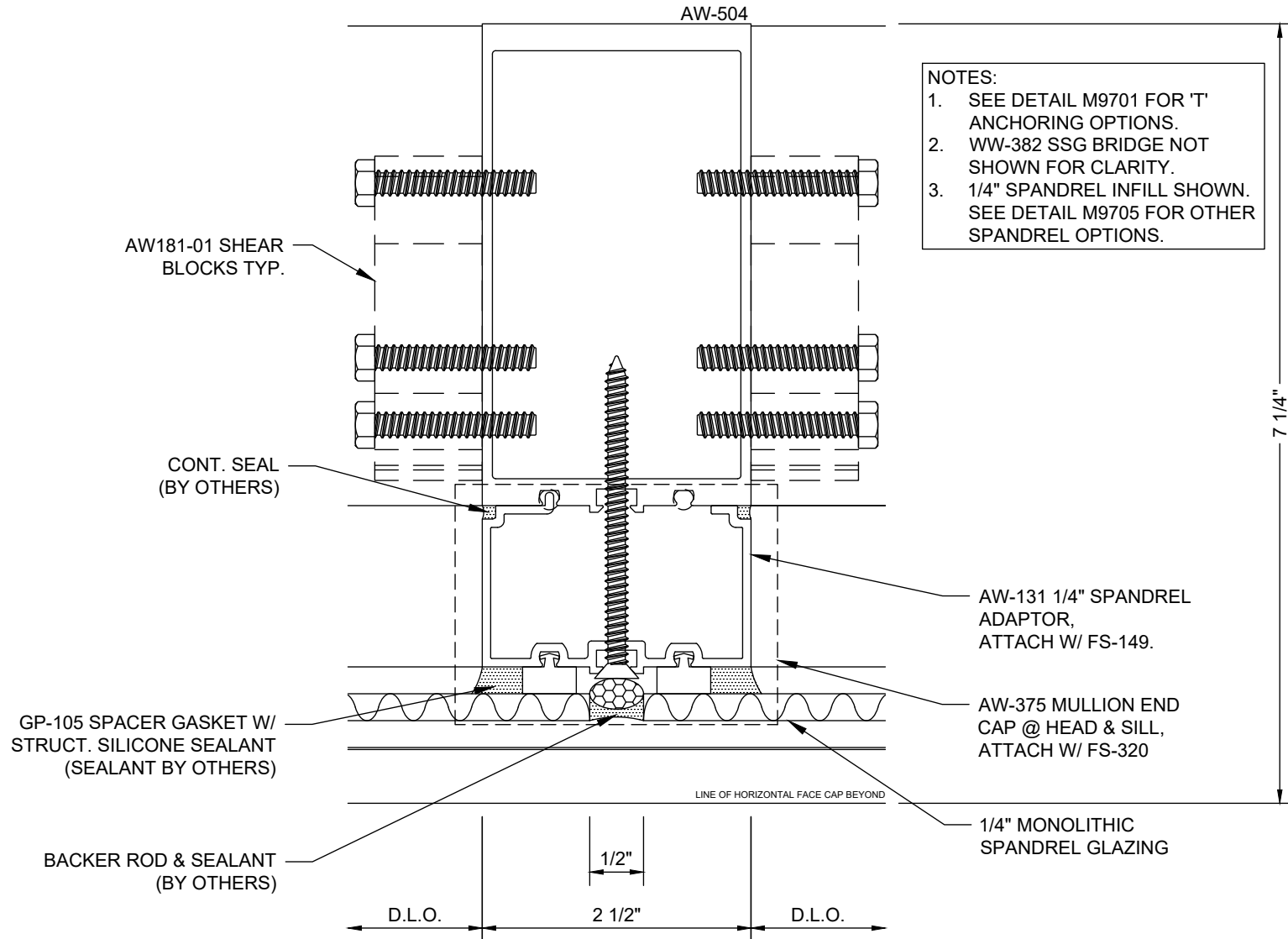
Reliance™-HTC Vertical at Operable Window - Flat Frame - V9707



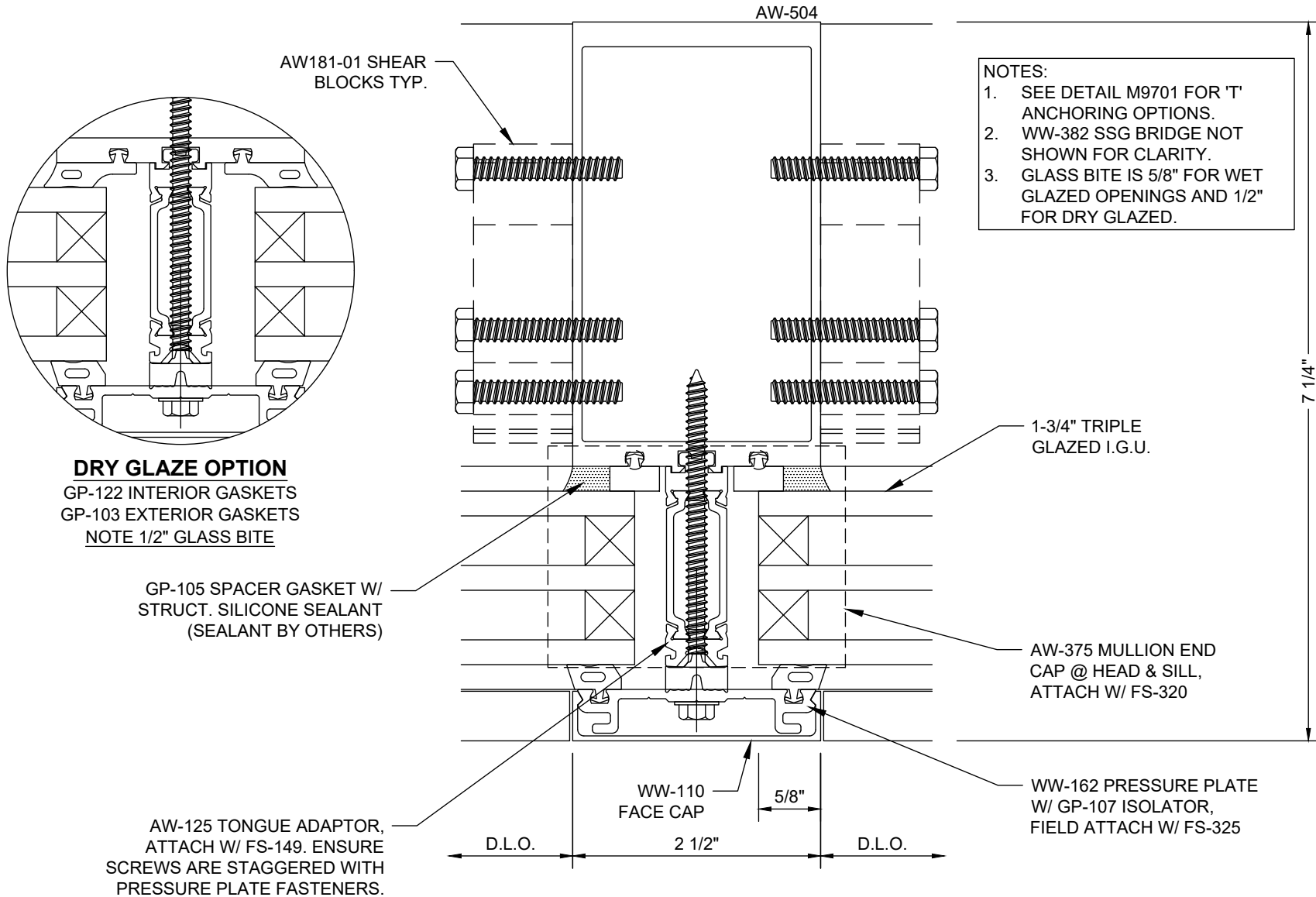
Reliance™-HTC Vertical at Operable Window - Pocket Frame - V9708



Reliance™-HTC SSG Vertical - V9716

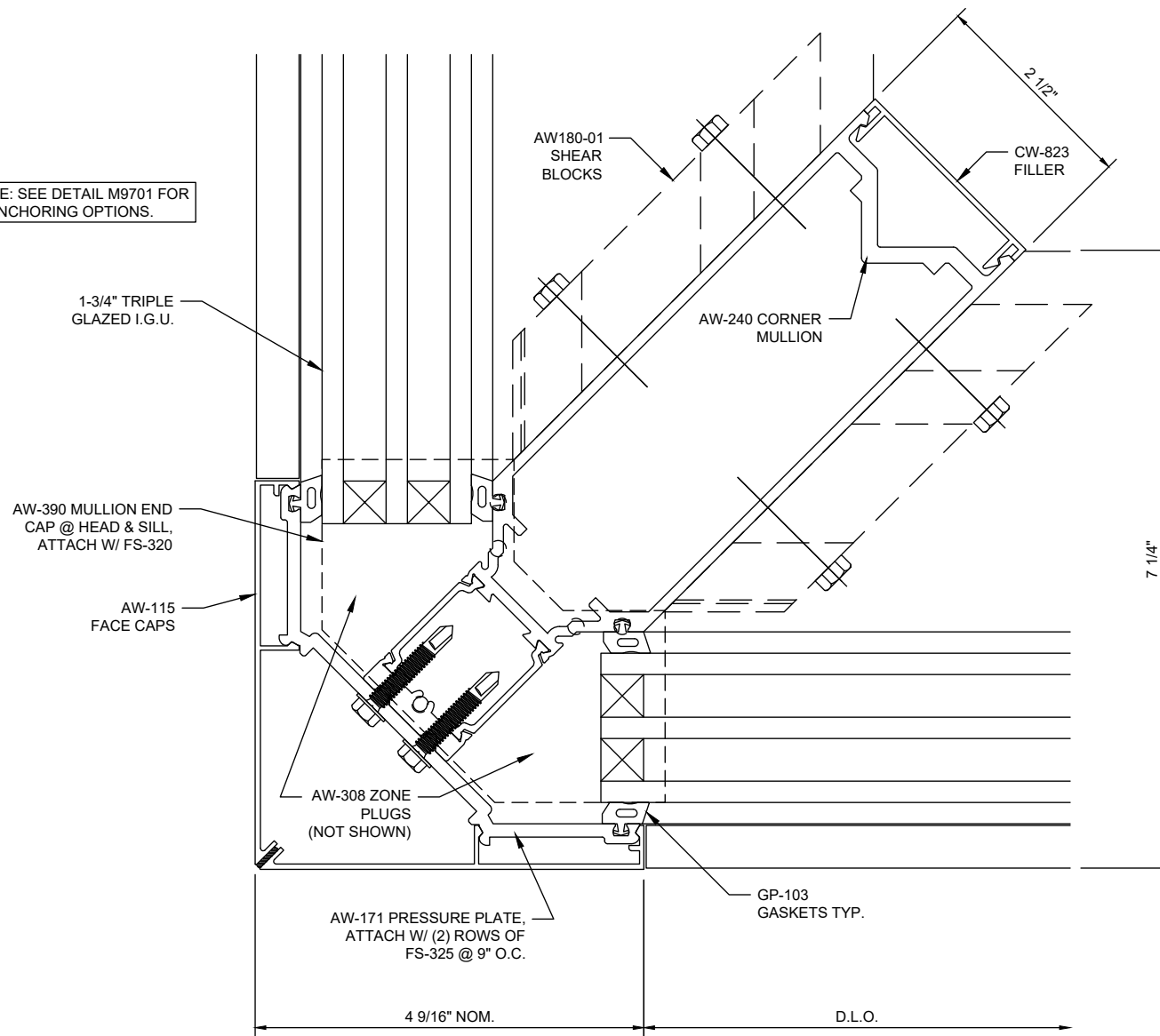


Reliance™-HTC SSG Vertical at Spandrel - V9718



Reliance™-HTC Vertical at SSG to Captured Transition - V9719

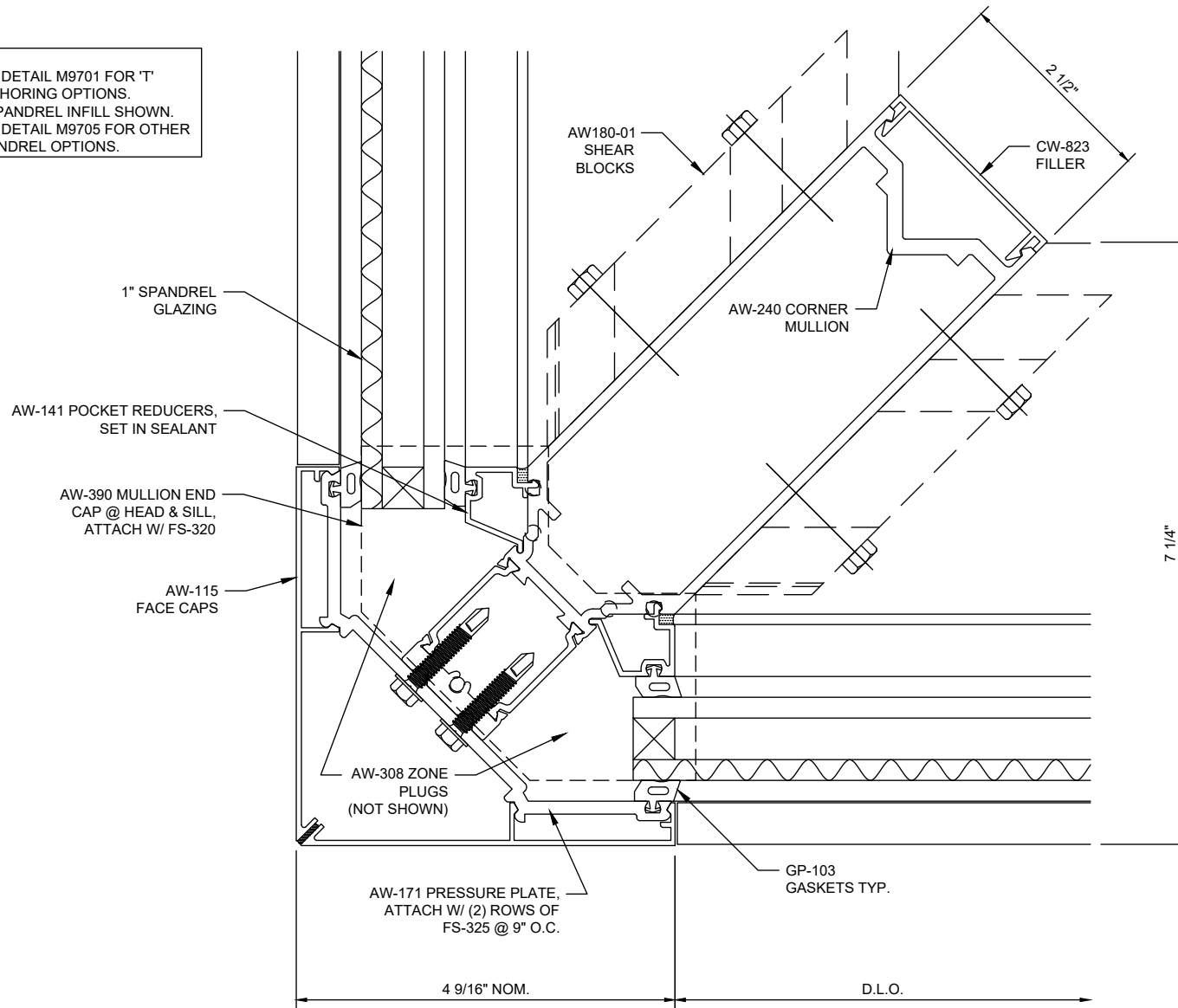
NOTE: SEE DETAIL M9701 FOR
'T' ANCHORING OPTIONS.



Reliance™-HTC 90° Outside Corner - V9709

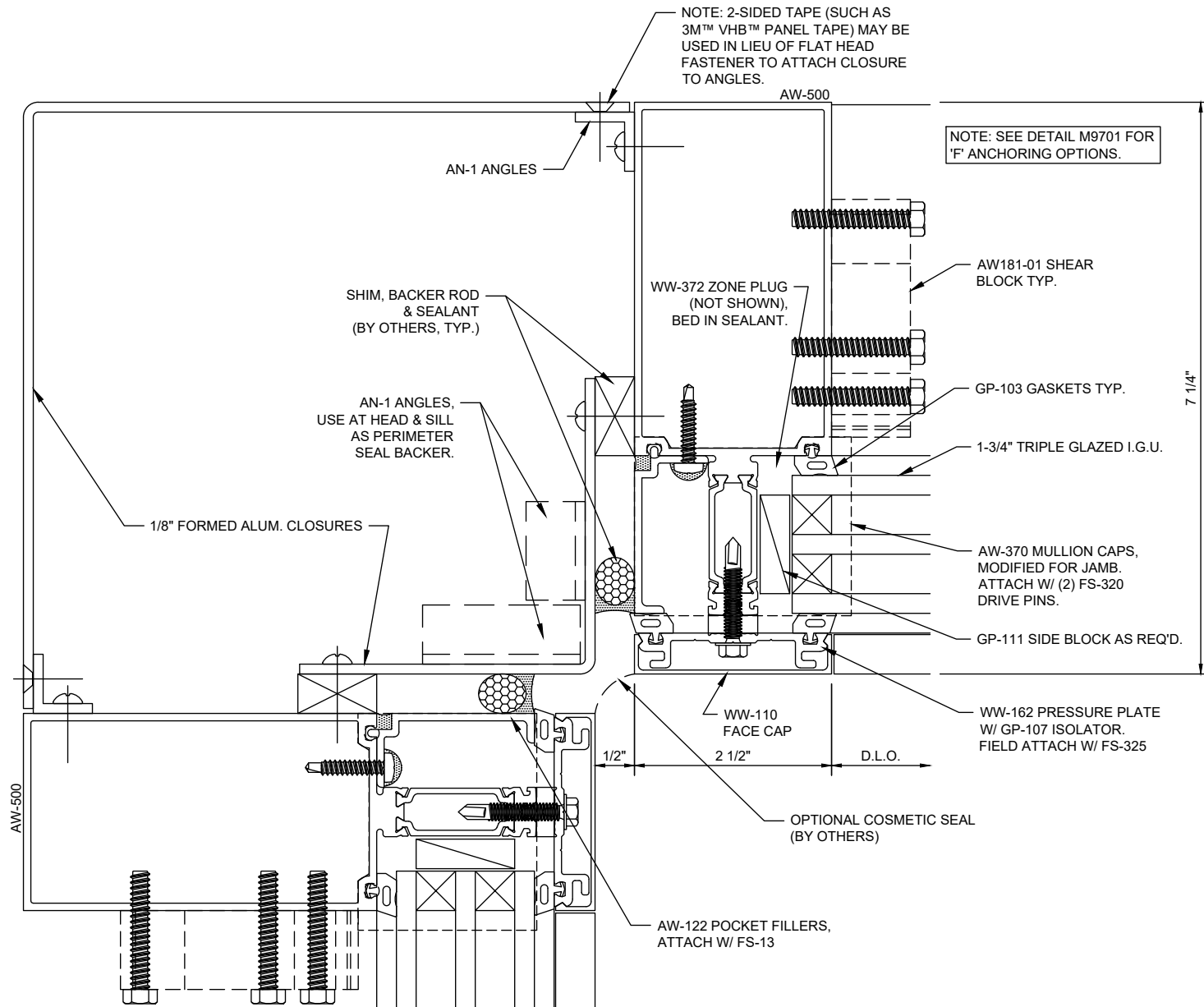
NOTES:

1. SEE DETAIL M9701 FOR 'T' ANCHORING OPTIONS.
2. 1" SPANDREL INFILL SHOWN. SEE DETAIL M9705 FOR OTHER SPANDREL OPTIONS.

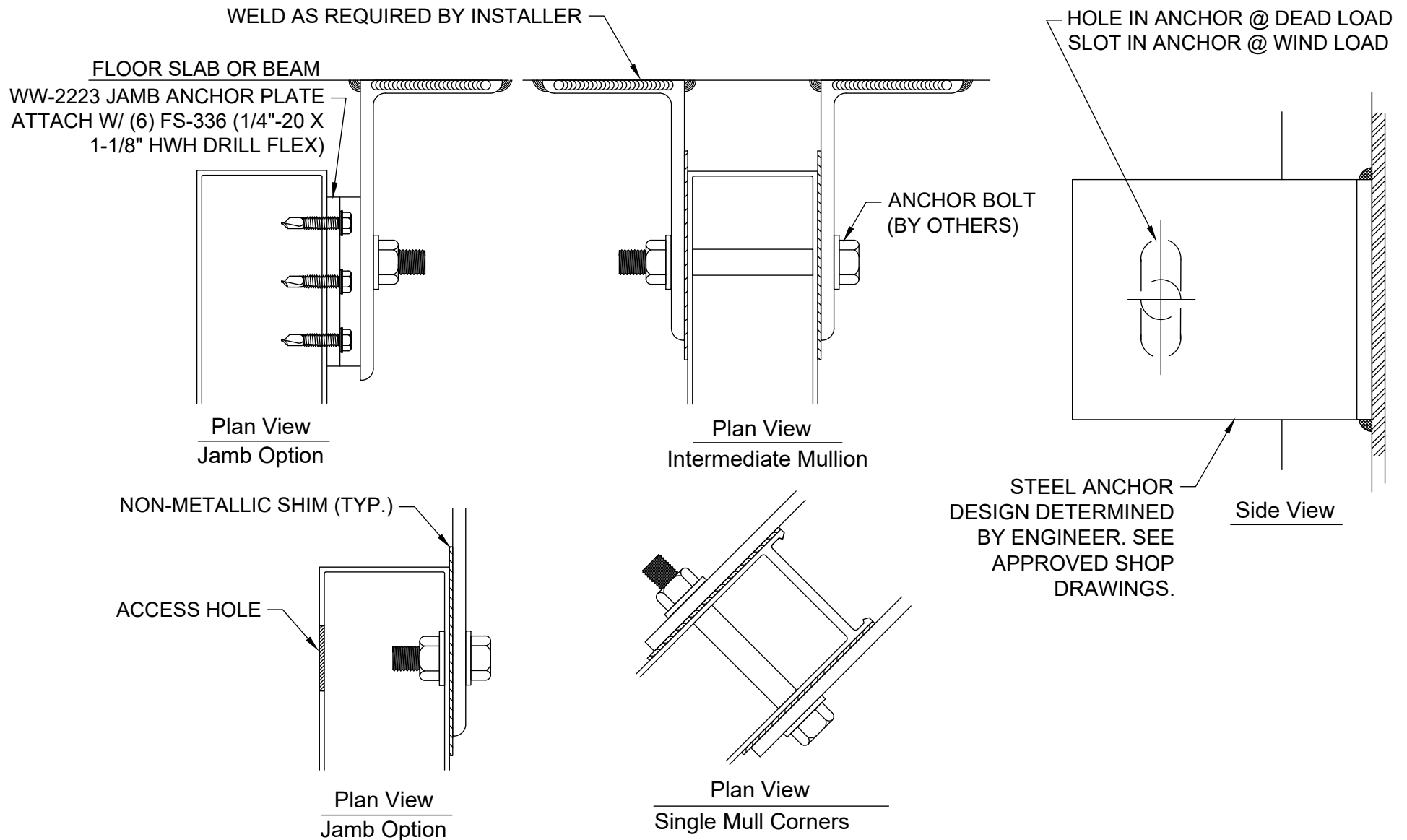


Reliance™-HTC

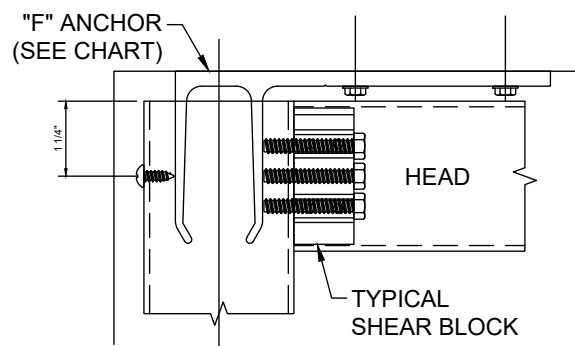
90° Outside Corner at Spandrel - V9710



Reliance™-HTC 90° Inside Corner - V9712



Standard Curtain Wall Steel Anchoring - M0042

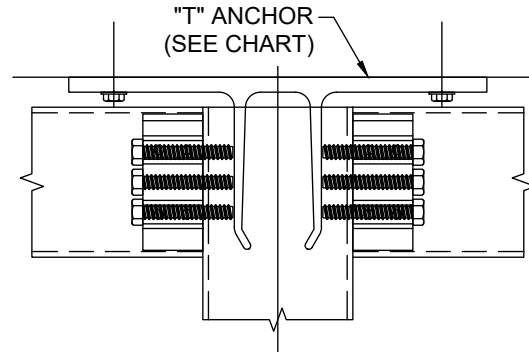


JAMB

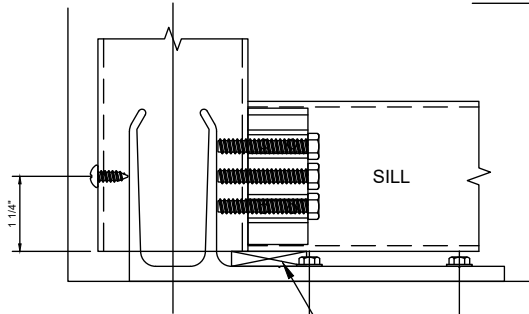
HEAD

TYPICAL
SHEAR BLOCK

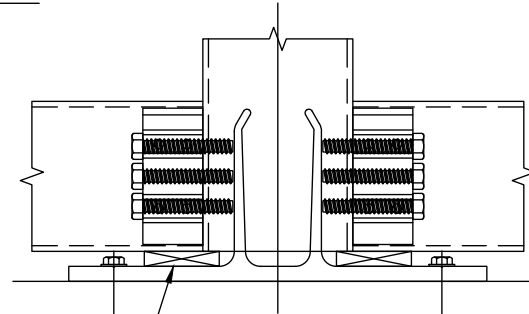
FRONT VIEW



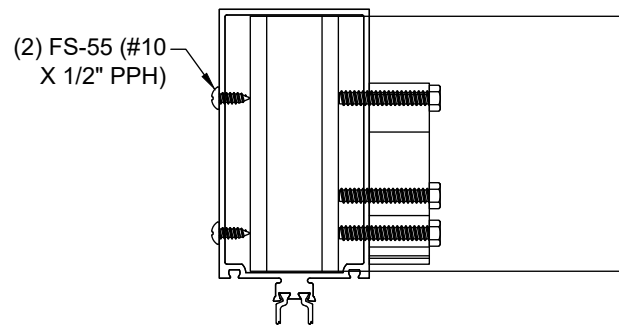
MULLION



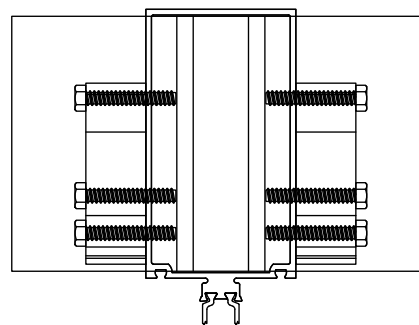
SHIM UNDERNEATH MULLION
(BY OTHERS)



ANCHOR BOLT
(SEE NOTE)



(2) FS-55 (#10
X 1/2" PPH)



PLAN VIEW

"F" ANCHOR CHART

PART NO.	MULLION
WW-103-11	AW-500 / AW-550
WW-103-12	AW-504
WW-103-13	AW-800 / AW-850
WW-103-14	AW-804

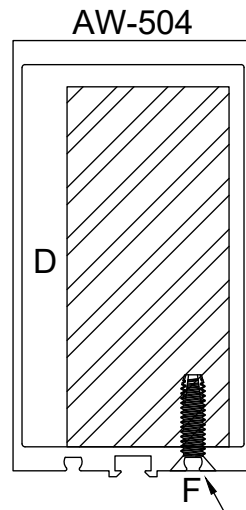
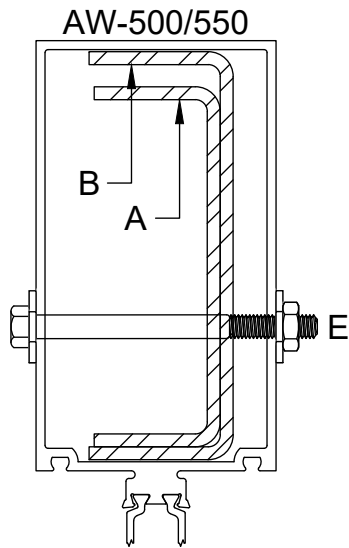
"T" ANCHOR CHART

PART NO.	MULLION
WW-102-16	AW-500 / AW-550
WW-102-17	AW-504
WW-102-18	AW-240 / AW-241 (90°, SHALLOW)
WW-102-19	AW-250 / AW-251 (90°, DEEP)
WW-102-20	AW-800 / AW-850
WW-102-21	AW-804

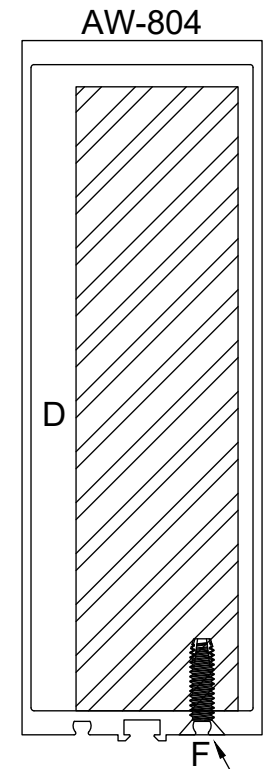
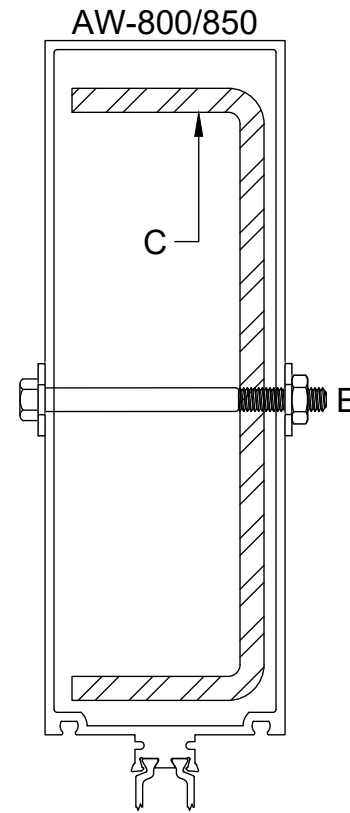
NOTE:

1. REFERENCE INSTALLATION MANUAL FOR MORE INFORMATION.
2. ANCHOR BOLT SIZE AND LAYOUT DETERMINED PER PROJECT VIA STRUCTURAL REVIEW. REFERENCE APPROVED SHOP DRAWINGS.

Reliance™-HTC 'F' and 'T' Mullion Anchoring - M9701



DRILL AND COUNTERSINK FOR
1/4" FLAT HEAD FASTENER AND
ATTACH W/ FS-259, SPACING
PER STRUCTURAL REVIEW.
REMOVE SPACER GASKET DART
AT FASTENER LOCATIONS.



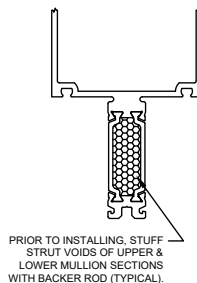
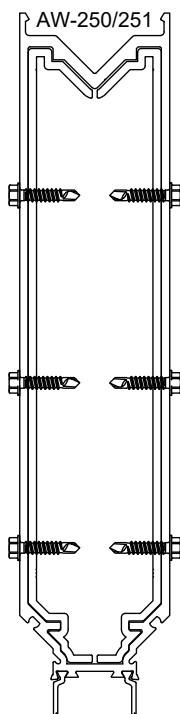
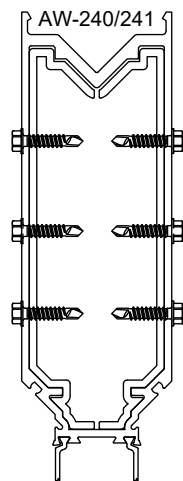
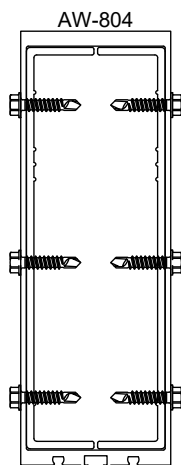
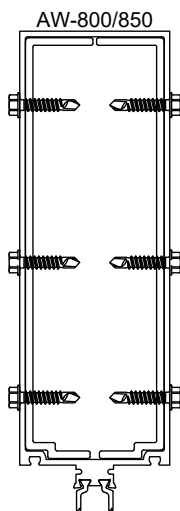
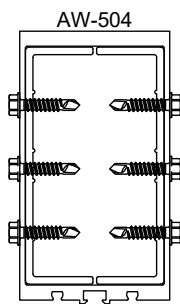
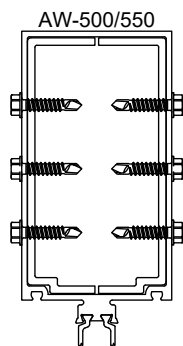
DRILL AND COUNTERSINK FOR
1/4" FLAT HEAD FASTENER AND
ATTACH W/ FS-259, SPACING
PER STRUCTURAL REVIEW.
REMOVE SPACER GASKET DART
AT FASTENER LOCATIONS.

STEEL REINFORCING CHART	
A	PP-17 (1 5/16" X 3 3/4" 10 GA.)
B	PP-16 (1 1/2" X 4 1/4" 10 GA.)
C	RS-36 (2" X 6-3/8" X 1/4" THICK)
D	STEEL BAR OPTION (BY OTHERS)
E	1/4"-20 X 3" HEX HEAD BOLT 1/4"-20 HEX NUT & WASHERS
F	FS-259 (1/4"-20 X 1" PFH THREAD CUTTING SCREW)

NOTES:

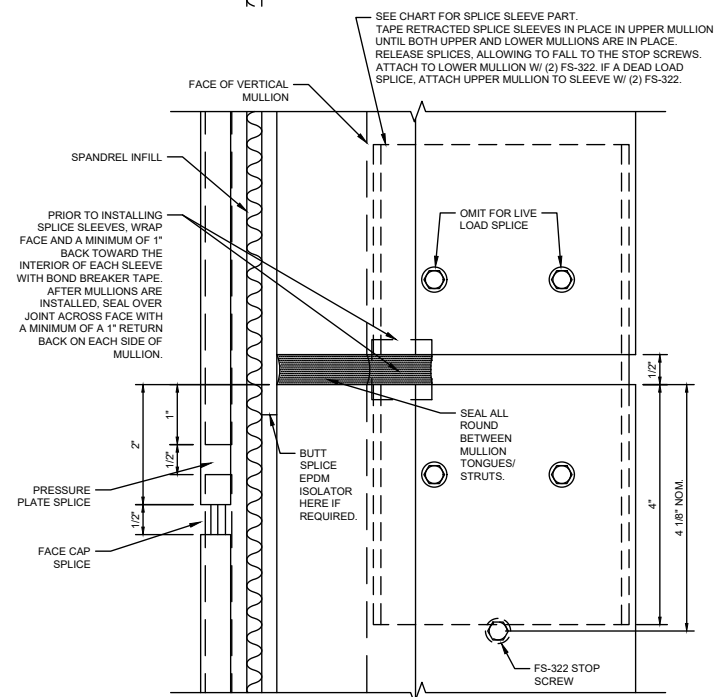
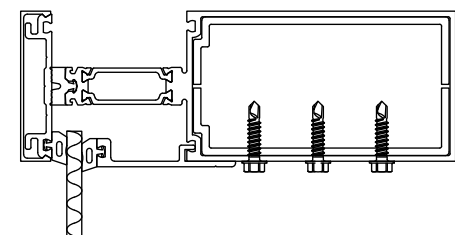
1. STEEL REQUIREMENTS AND ATTACHMENT LAYOUT
DETERMINED PER PROJECT VIA STRUCTURAL REVIEW.
REFERENCE APPROVED SHOP DRAWINGS.

Reliance™-HTC Steel Reinforcement - M9702



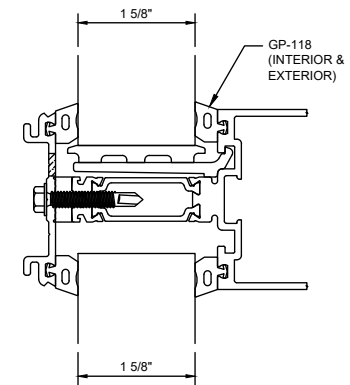
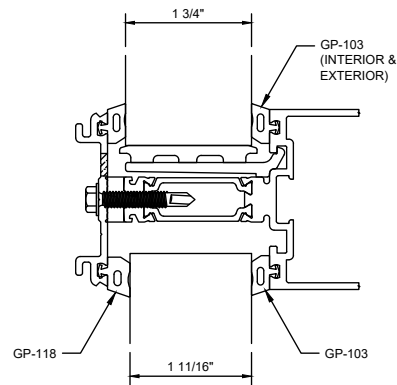
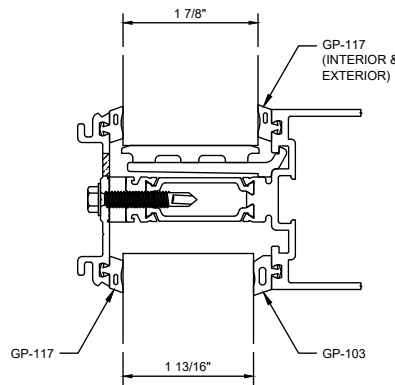
MULLION SPLICE CHART	
MULLION	SPLICE PART
AW-500 AW-550	AW-194-01
AW-504	AW-195-01
AW-800 AW-850	AW196-01
AW-804	AW-197-01
AW-240 AW-241	AW-198-01
AW-250 AW-251	AW-200-01

- NOTES:
1. FS-322 (#12-14 X 1" HWH DRILLING SCREW) IS TYPICAL FOR ATTACHMENT OF SPLICE SLEEVES.
 2. FS-322 STOP SCREWS SHOWN DASHED.
 3. DETAIL DRAWN FOR A TOTAL OF 1/2" MOVEMENT (PLUS/MINUS 1/4").
 4. SPLICE DETAIL SHOWS THE 1-3/4" GLAZED SHALLOW SYSTEM W/ 1/4" SPANDREL INFILL. OTHER SYSTEM CONFIGURATIONS ARE SIMILAR. SEE DETAIL M970X FOR INFILL OPTIONS AND SPANDREL ADAPTORS.
 5. CAPTURED VERTICAL SPLICE PROCEDURE IS SHOWN; REFERENCE INSTALLATION MANUAL FOR SSG VERTICAL SPLICE PROCEDURE.

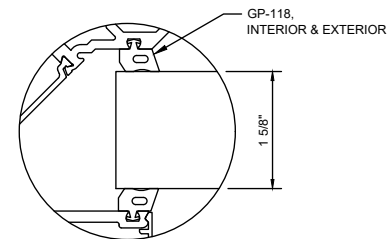
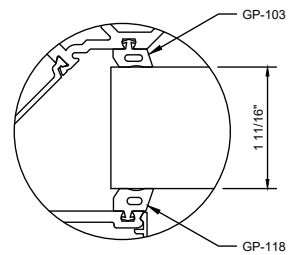
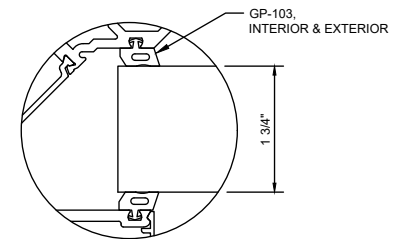
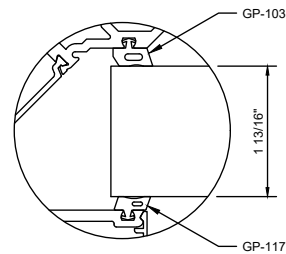
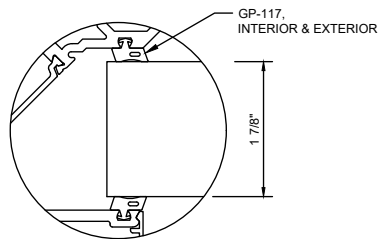


PROFILE VIEW

Reliance™-HTC Mullion Splicing - M9703



HORIZONTAL & VERTICAL VISION GLAZING OPTIONS

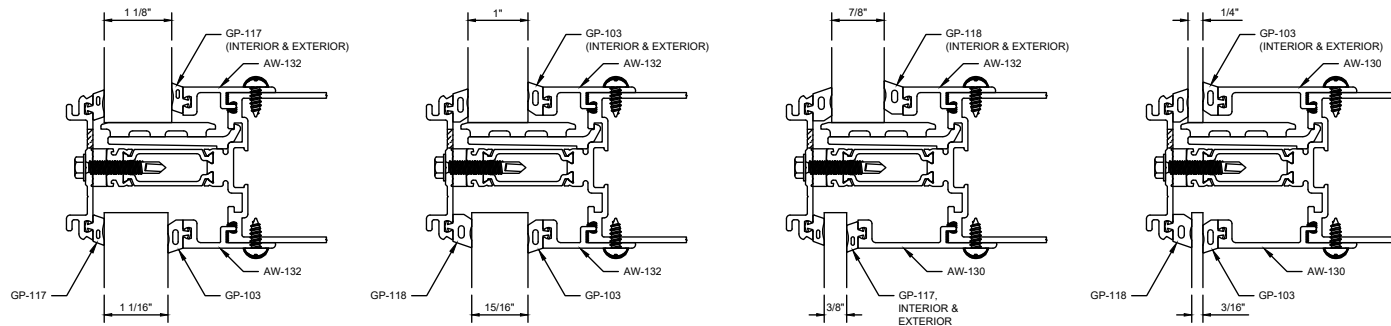


CORNER VISION GLAZING OPTIONS

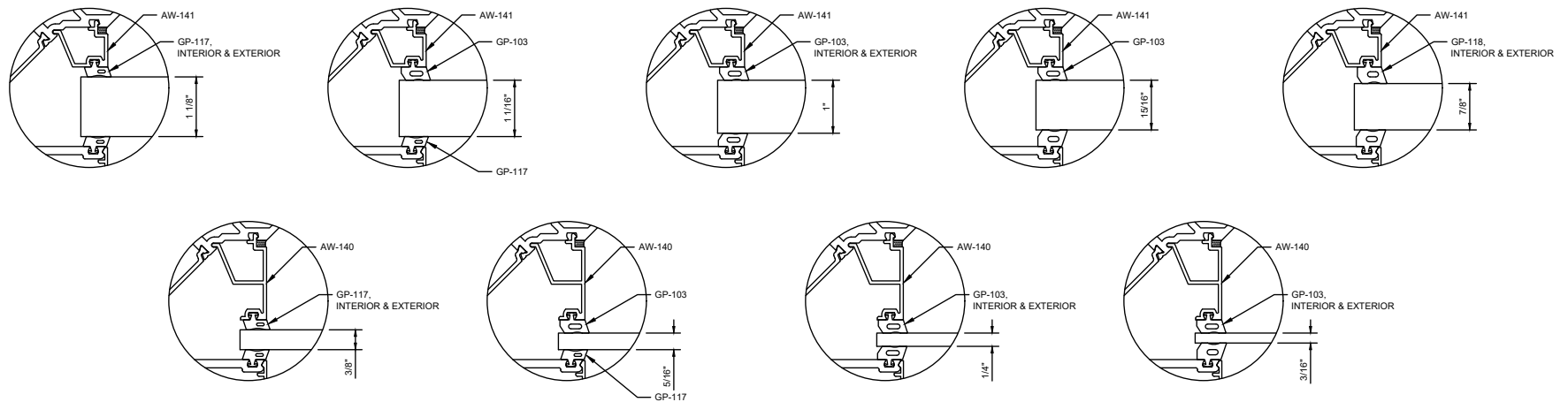
NOTES:

1. ALL INFILL OPTIONS USE AW-121-01 SETTING CHAIRS AND GP-175 SETTING BLOCKS.
2. GLASS POCKET DIMENSION IS 2-1/4\".
3. NOTE THAT IF SSG VERTICALS ARE INCLUDED IN PROJECT, A GLAZING OPTION USING GP-103 ON THE INTERIOR SHOULD BE USED FOR PROPER GLASS ALIGNMENT WITH VERTICAL SSG SPACERS.

Reliance™-HTC Vision Glazing Options - M9704



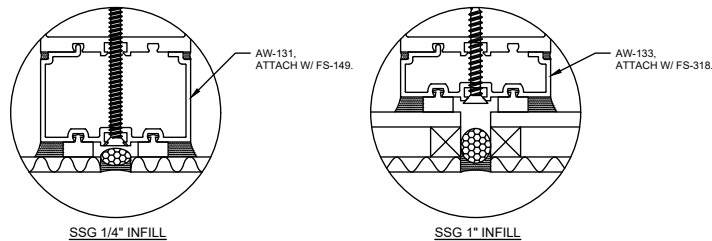
HORIZONTAL & VERTICAL SPANDREL GLAZING OPTIONS



CORNER SPANDREL GLAZING OPTIONS

NOTES:

1. FS-55 IS TYPICAL FOR ATTACHMENT OF SCREW-APPLIED SPANDREL ADAPTORS. ATTACH @ 12" O.C. & CAP SEAL ALL FASTENERS.
2. ALL INFILL OPTIONS USE AW-121 SETTING CHAIRS AND GP-175 SETTING BLOCKS.
3. ALL SPANDREL ADAPTORS ARE SET IN SEALANT.
4. GLASS POCKET DIMENSION IS 1-1/2" WITH AW-132/AW-141, AND 3/4" WITH AW-130/AW-140.
5. ATTACH SSG SPANDREL ADAPTORS W/ FS-149 (#12 X 3" PFH SMS) @12" O.C. FOR 1/4" INFILL, OR FS-318 (#12 X 1-3/4" PFH SMS) @ 12" O.C. FOR 1" INFILL.



SSG SPANDREL GLAZING OPTIONS

Reliance™-HTC Spandrel Glazing Options - M9705