

# Oldcastle BuildingEnvelope®

1-866-Oldcastle (653-2278) - [www.obe.com](http://www.obe.com)

## Reliance™-HTC 2-1/2" X 10" w/ 1-3/4" Triple Glazed Typical Infill

*(Drawing numbers---i.e., V9731---used as CAD detail reference only)*

### Elevation

V9737	Vertical at Operable Window - Flat Frame
V9738	Vertical at Operable Window - Pocket Frame
V9746	SSG Vertical
V9748	SSG Vertical at Spandrel
V9749	Vertical at SSG to Captured Transition

### **Horizontal Details**

H9731	Head
H9732	Intermediate Horizontal
H9733	Horizontal at Vision over Spandrel
H9734	Horizontal at Vision over Spandrel w/ Back Pan
H9738	Sill
H9739	Horizontal at Operable Window - Flat Frame
H9740	Horizontal at Operable Window - Pocket Frame

### **Corner Details**

V9739	90° Outside Corner
V9740	90° Outside Corner at Spandrel
V9742	90° Inside Corner

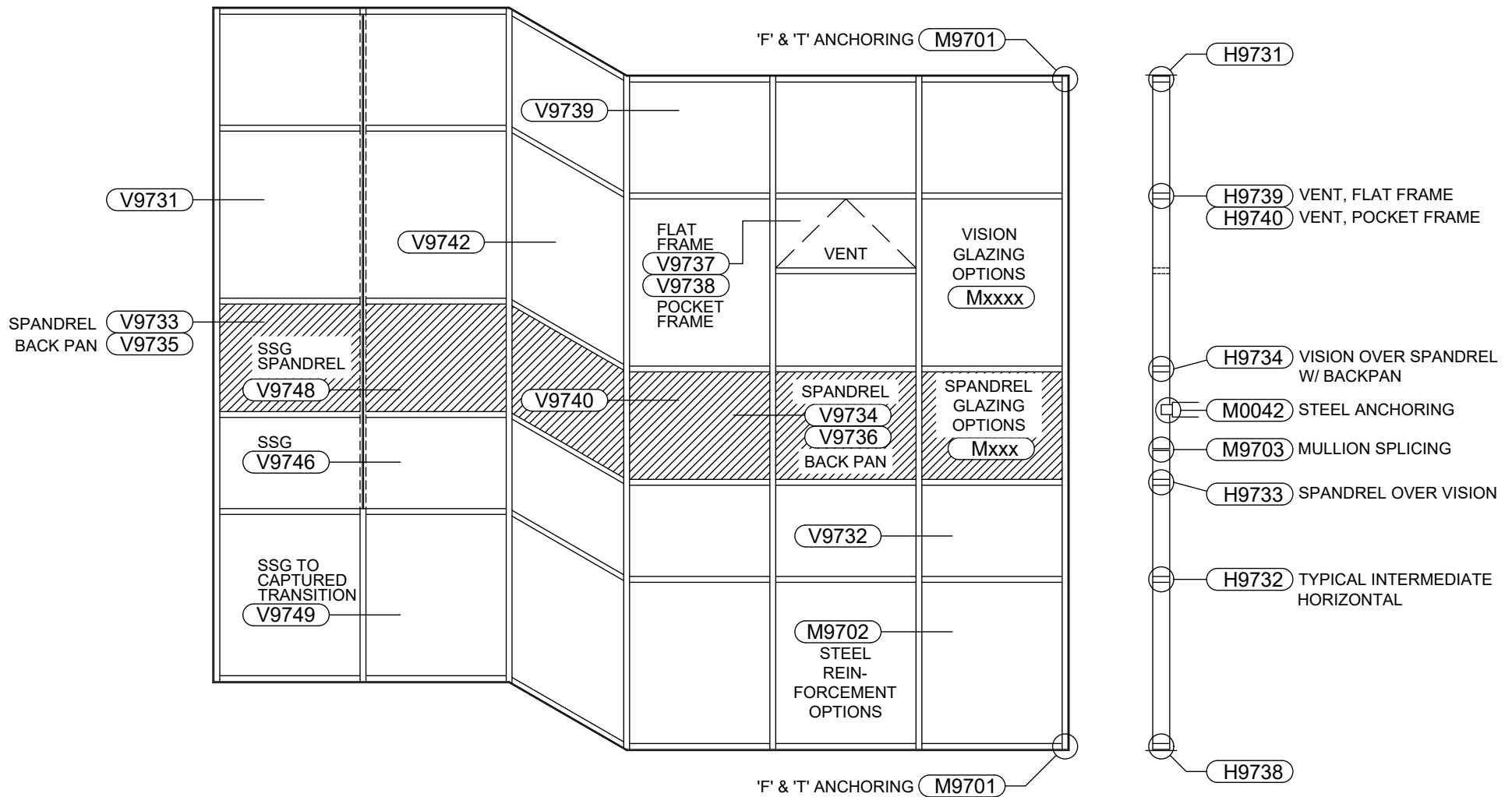
### **Vertical Details**

V9731	Jamb
V9732	Typical Vertical
V9733	Jamb at Spandrel
V9734	Intermediate Vertical at Spandrel
V9735	Jamb at Spandrel w/ Back Pan
V9736	Intermediate Vertical at Spandrel w/ Back Pan

### **Misc. Details**

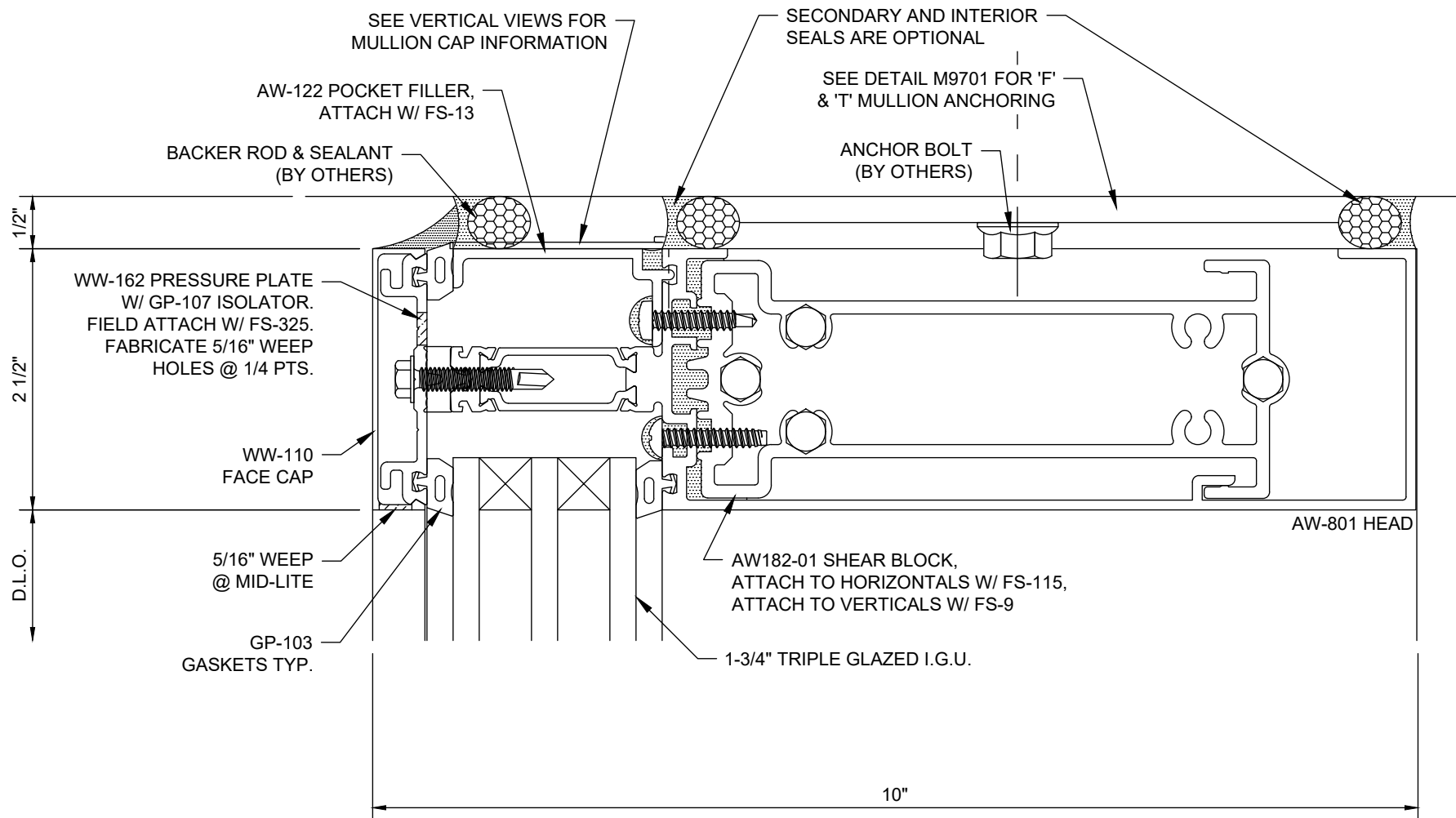
M0042	Steel Mid-Span Anchoring
M9701	'F' & 'T' Mullion Anchoring
M9702	Steel Reinforcement Options
M9703	Mullion Splicing
M9704	Vision Glazing Options
M9705	Spandrel Glazing Options

## Table of Contents

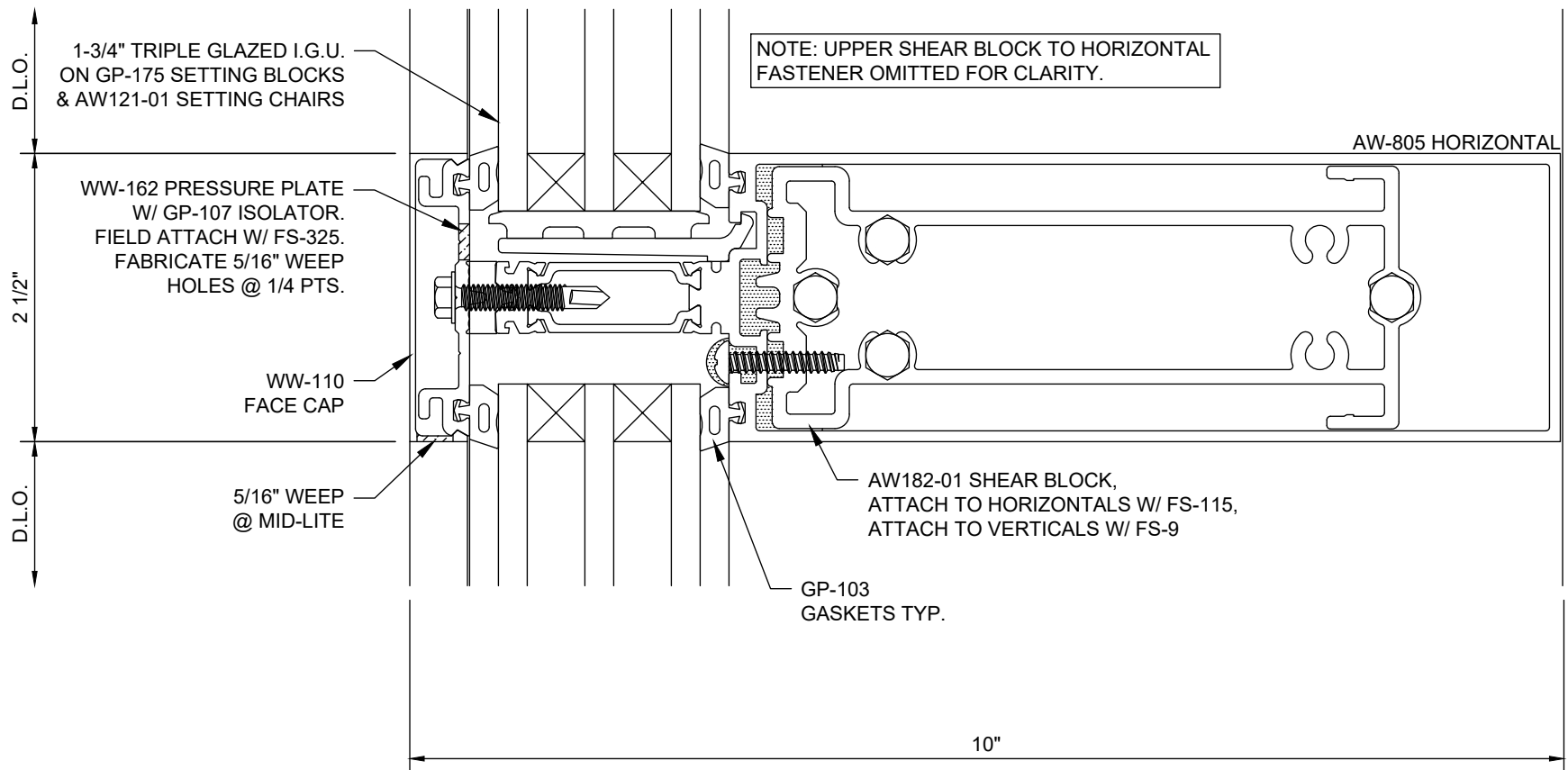


## Reliance™-HTC

### 2-1/2" x 10" w/ 1-3/4" Triple Glazed Typical Infill - Elevation



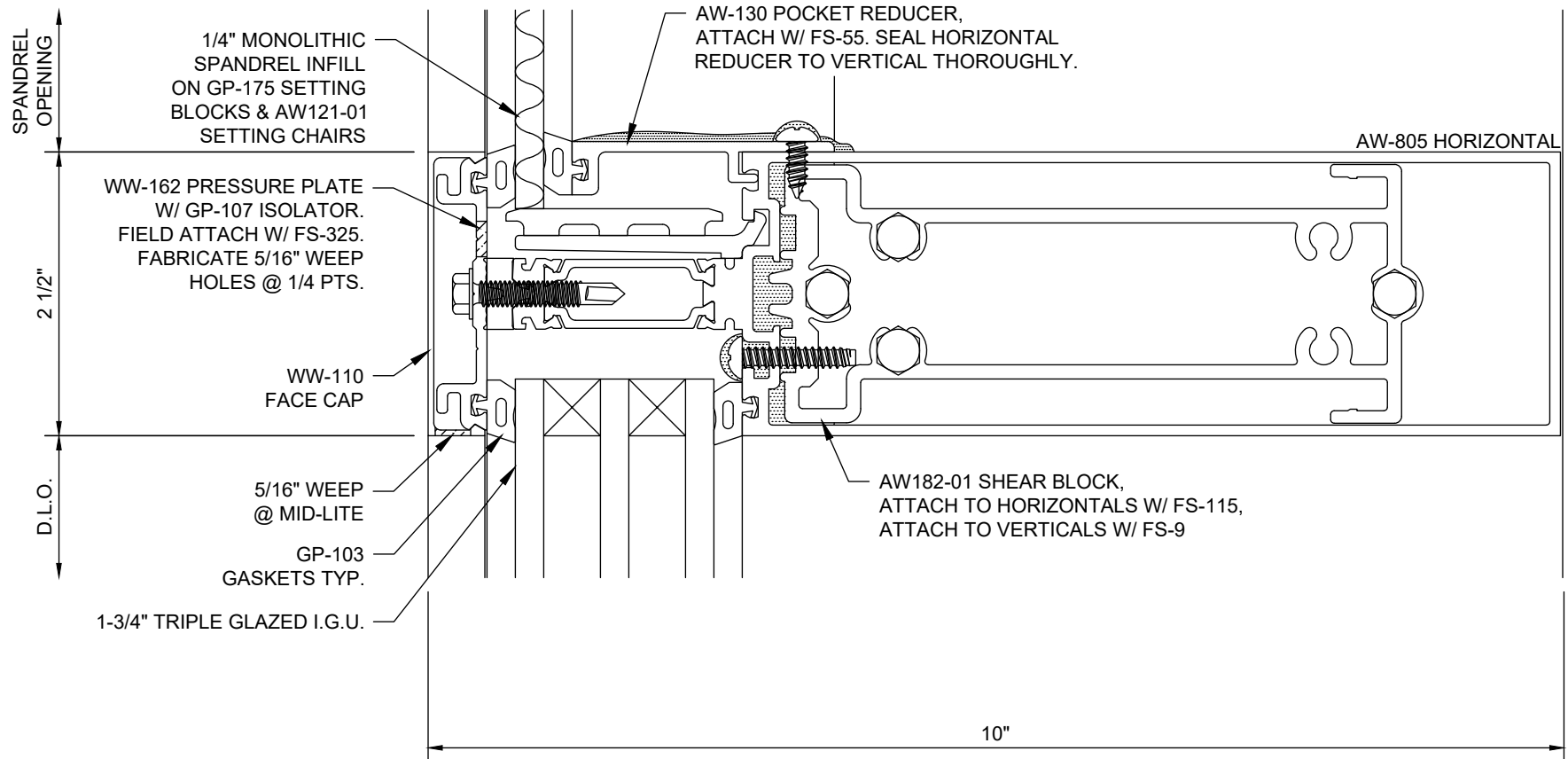
## Reliance™-HTC Head - H9731



## Reliance™-HTC Intermediate Horizontal - H9732

NOTES:

1. UPPER SHEAR BLOCK TO HORIZONTAL FASTENER OMITTED FOR CLARITY.
2. 1/4" SPANDREL INFILL SHOWN; SEE DETAIL M9705 FOR ADDITIONAL SPANDRELL INFILL OPTIONS.

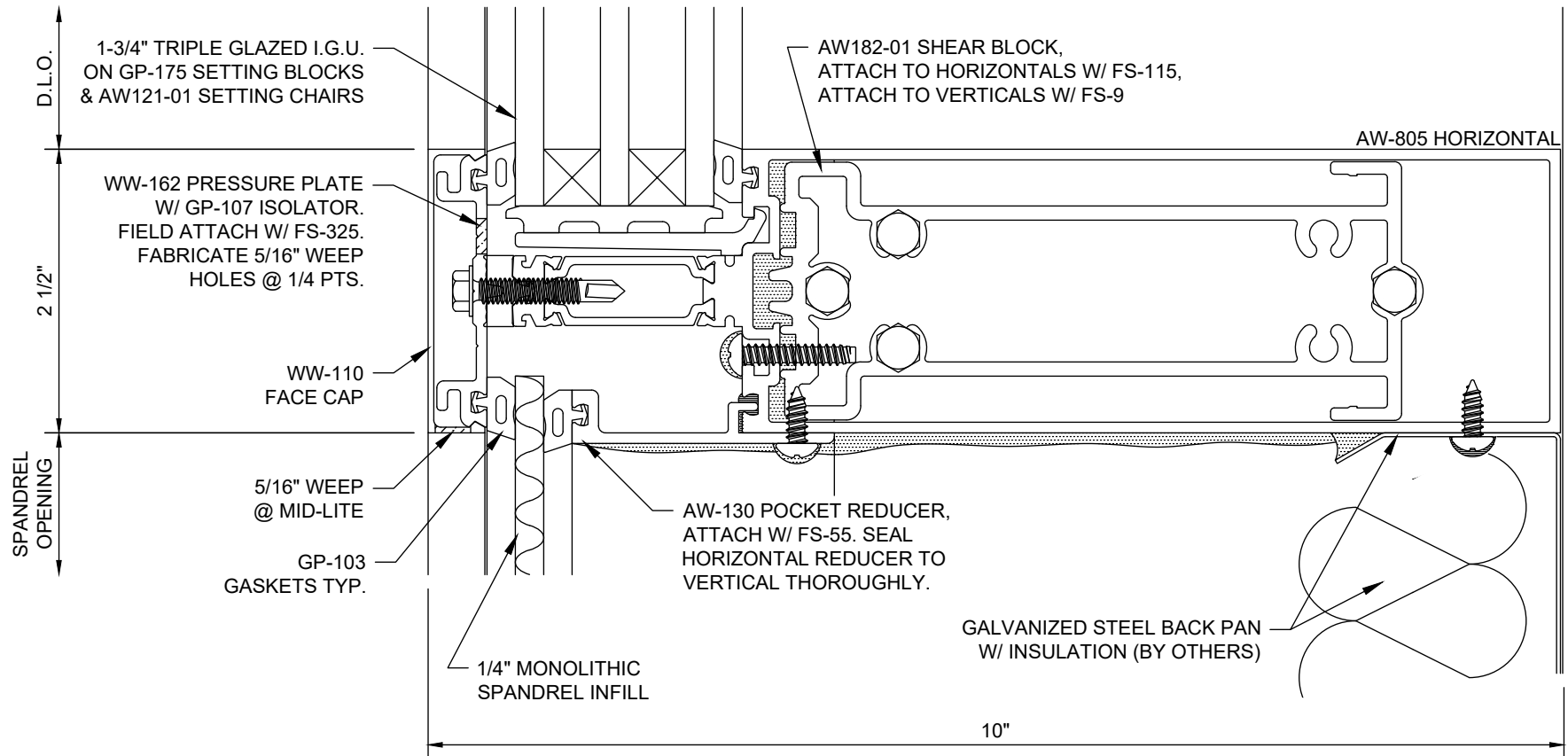


## Reliance™-HTC

### Horizontal at Spandrel over Vision - H9733

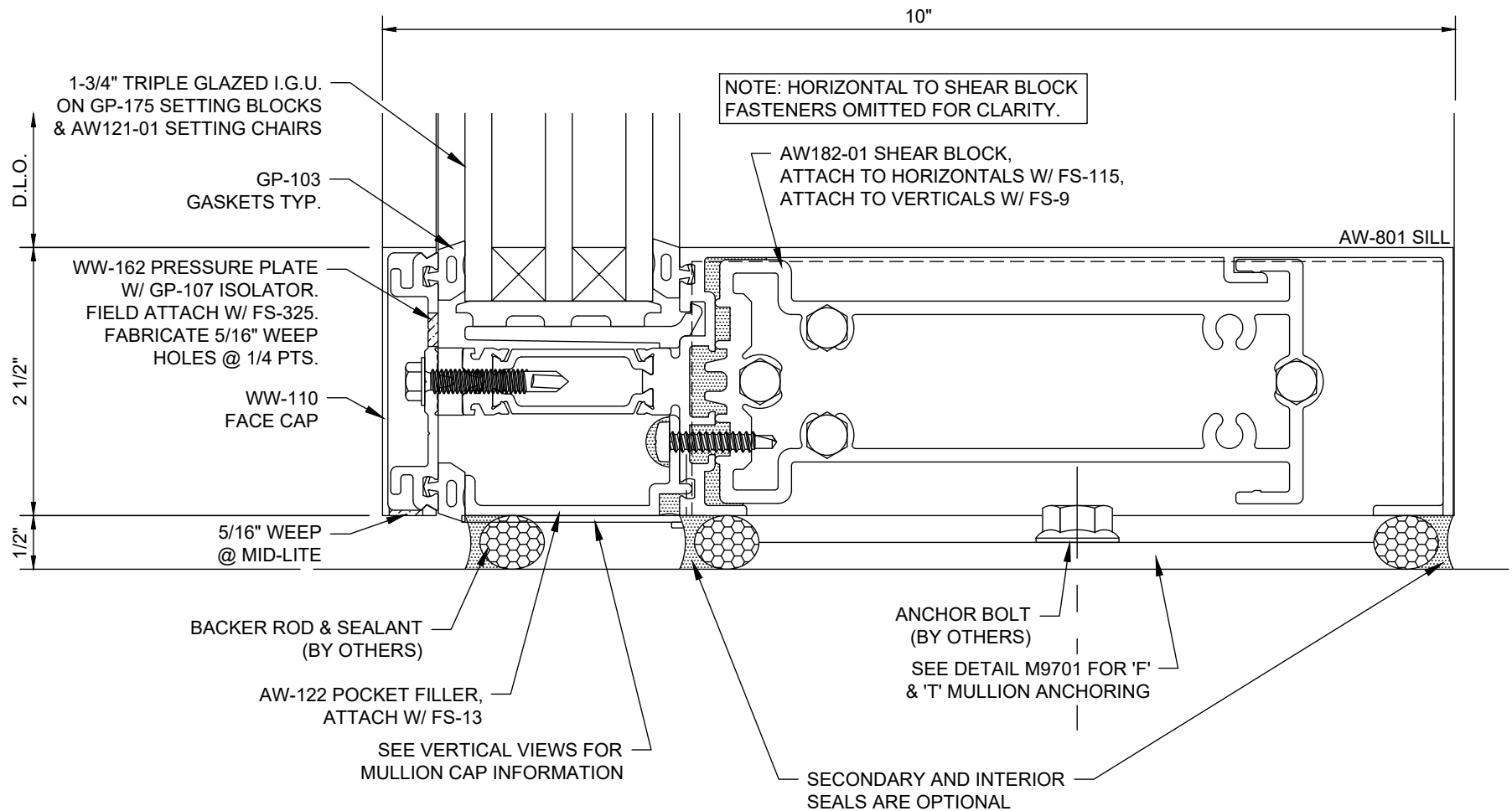
NOTES:

1. UPPER SHEAR BLOCK TO HORIZONTAL FASTENER OMITTED FOR CLARITY.
2. 1/4" SPANDREL INFILL SHOWN AT BACKPAN; SEE DETAIL M9705 FOR ADDITIONAL SPANDREL INFILL OPTIONS.

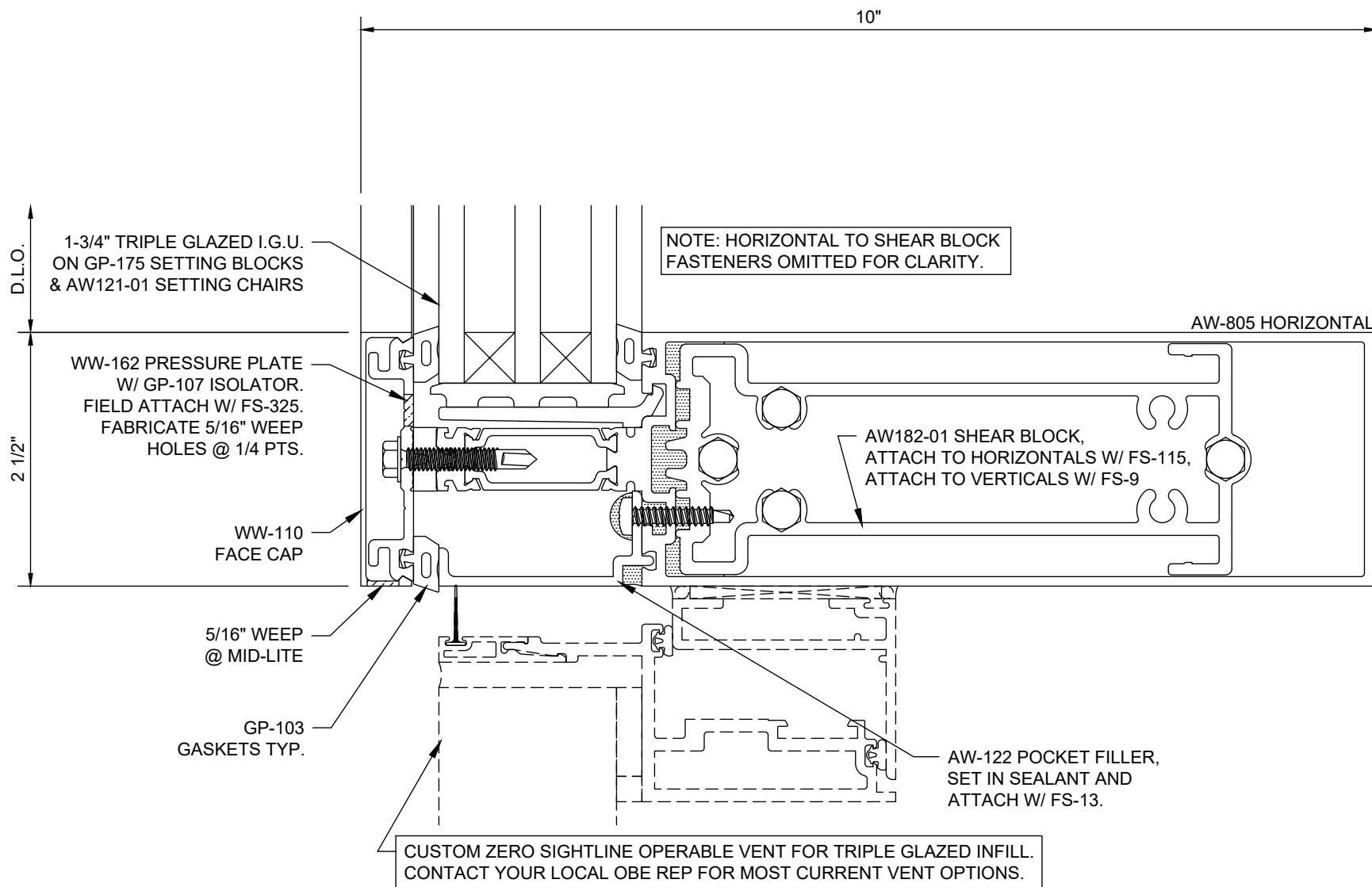


## Reliance™-HTC

### Horizontal at Vision over Spandrel with Back Pan - H9734

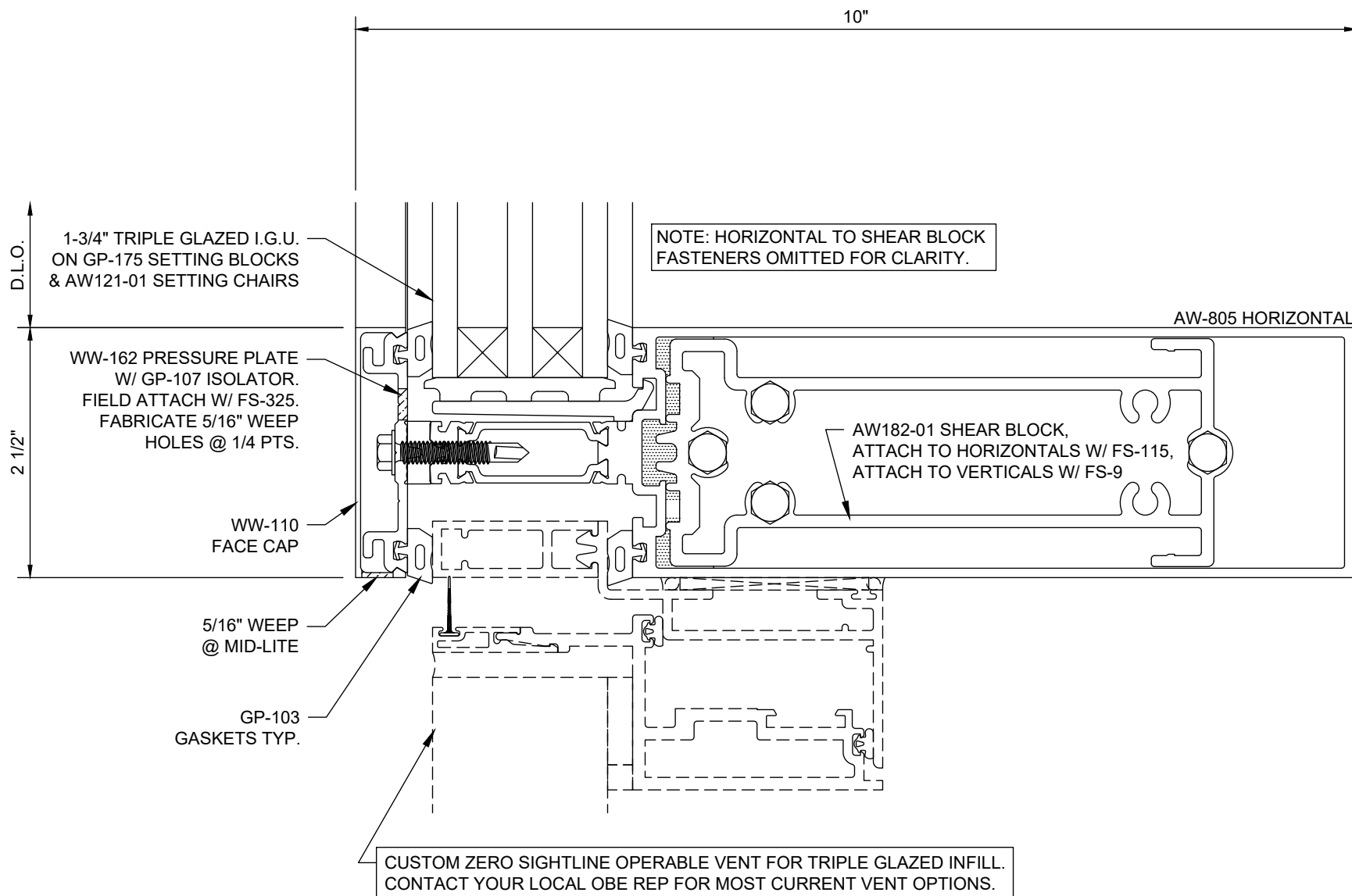


## Reliance™-HTC Sill - H9738



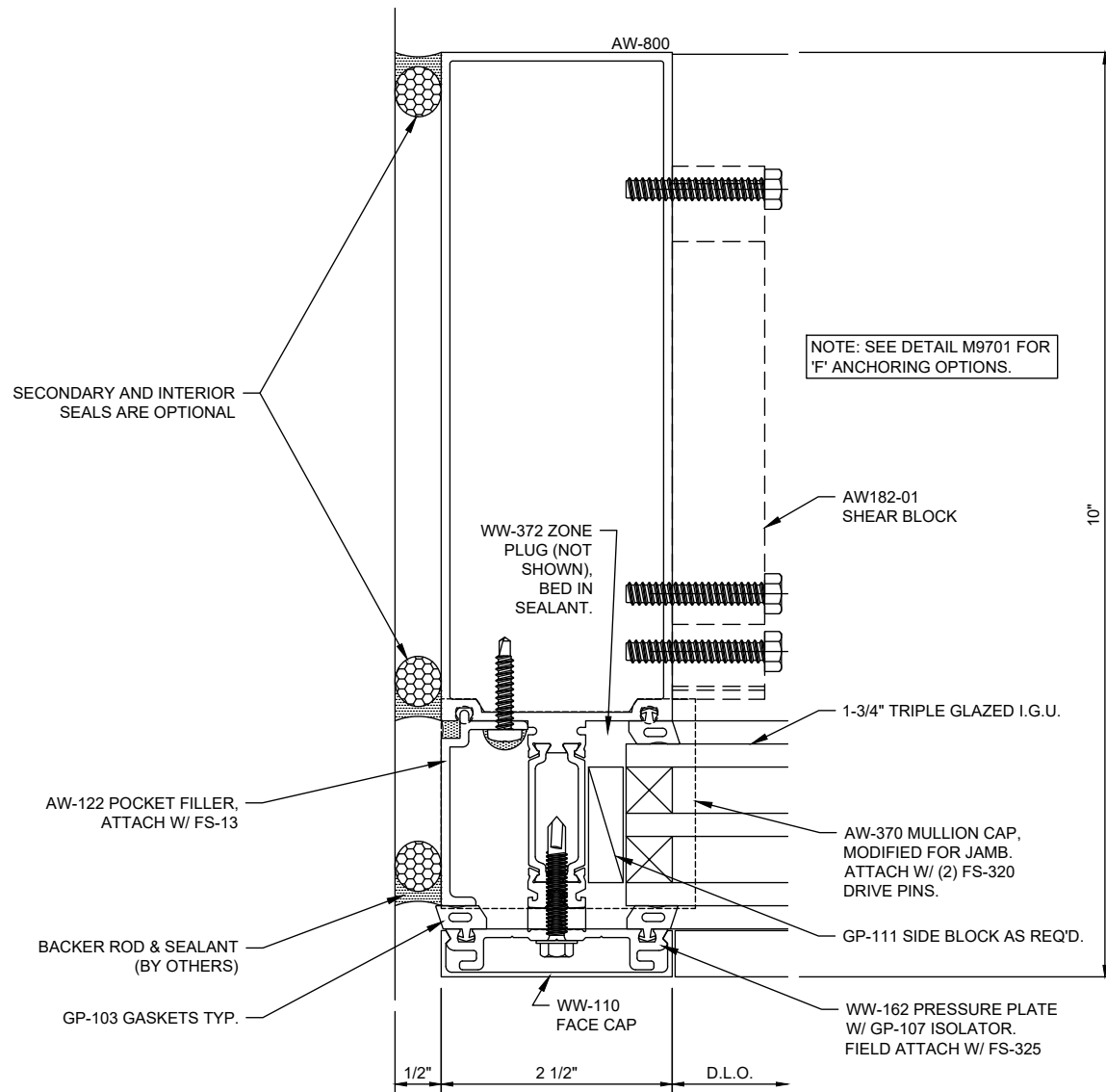
## Reliance™-HTC

### Horizontal at Operable Window - Flat Frame - H9739

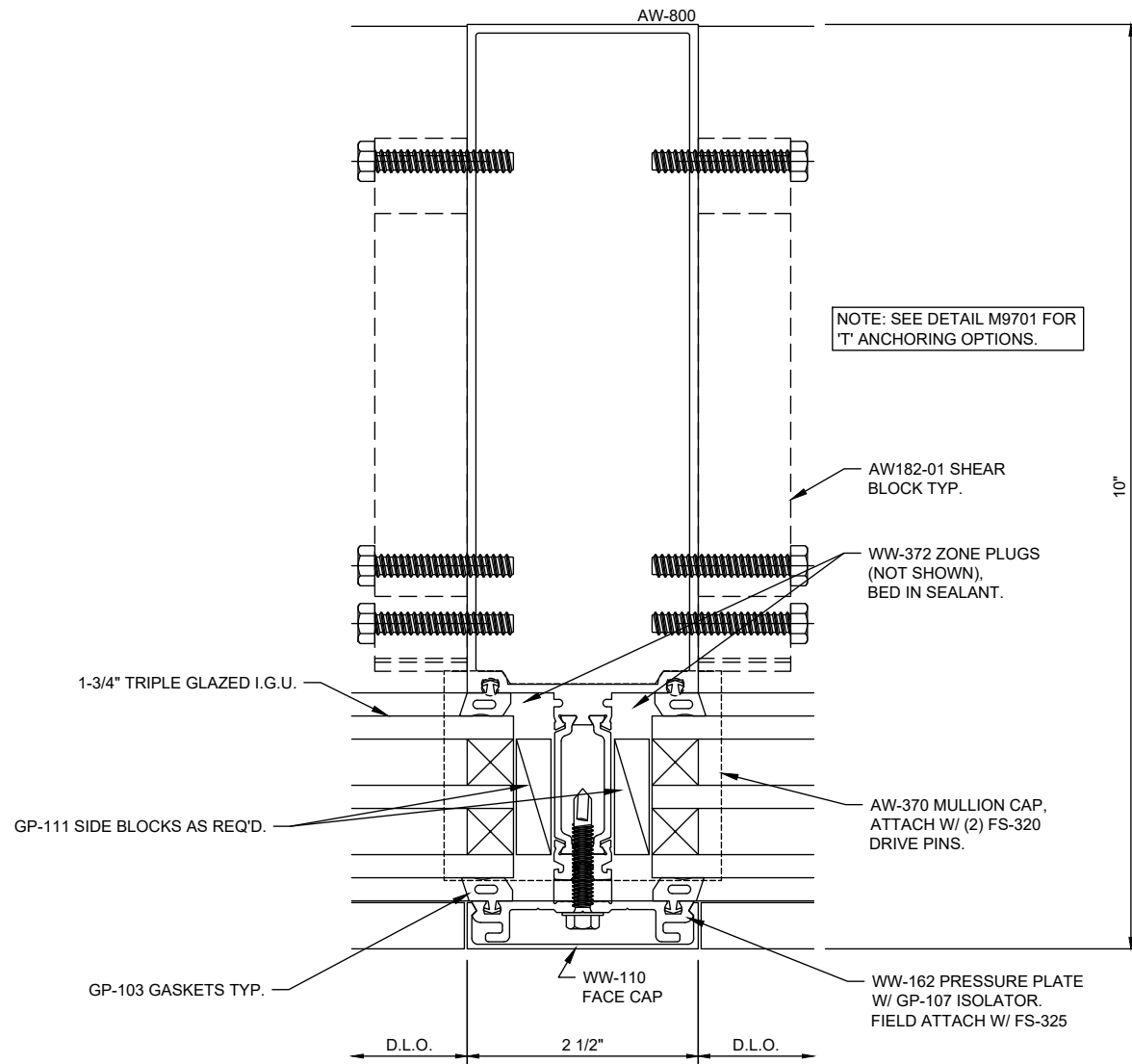


## Reliance™-HTC

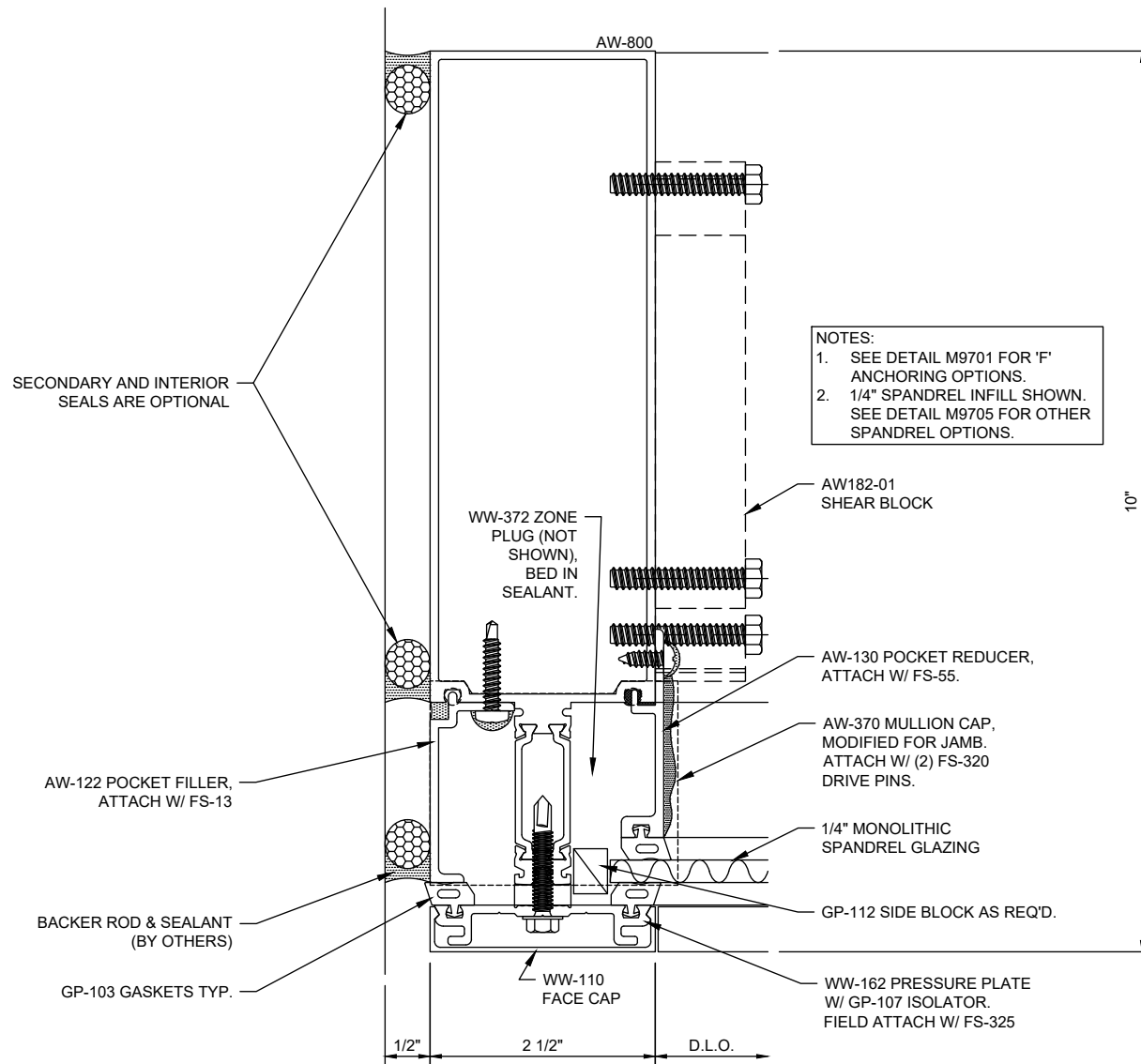
### Horizontal at Operable Window - Pocket Frame - H9740



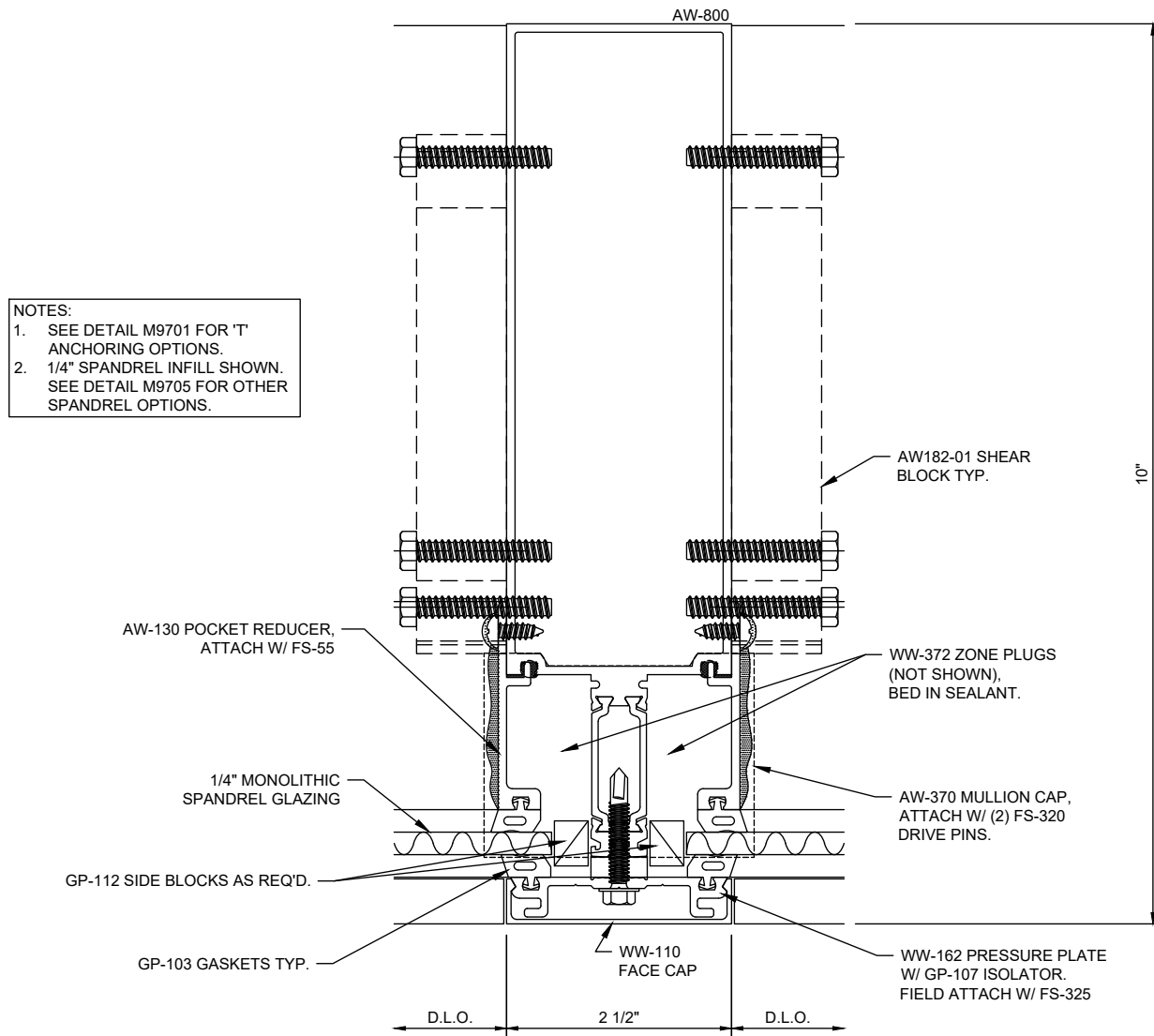
## Reliance™-HTC Jamb - V9731



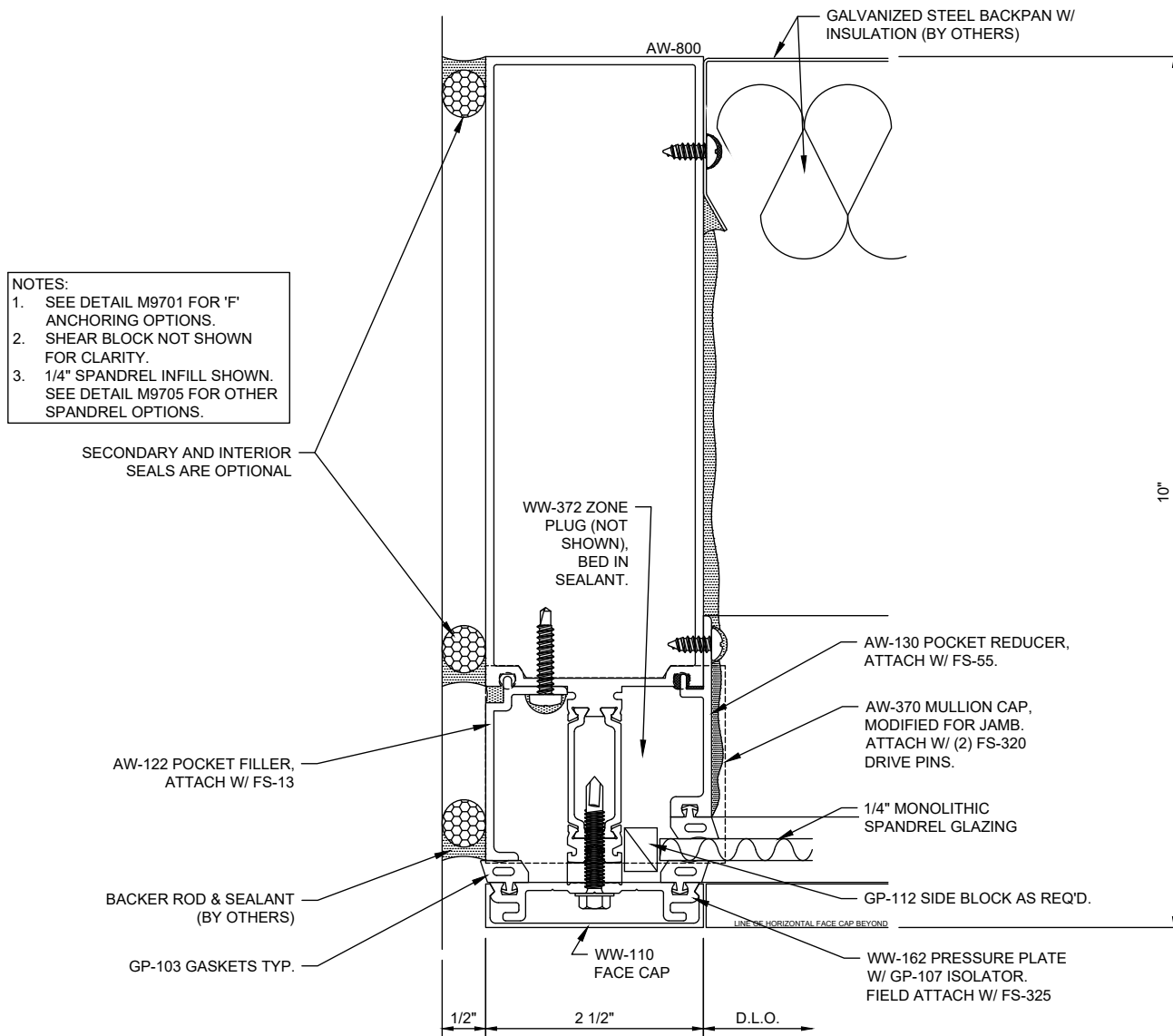
## Reliance™-HTC Typical Vertical - V9732



## Reliance™-HTC Jamb at Spandrel - V9733

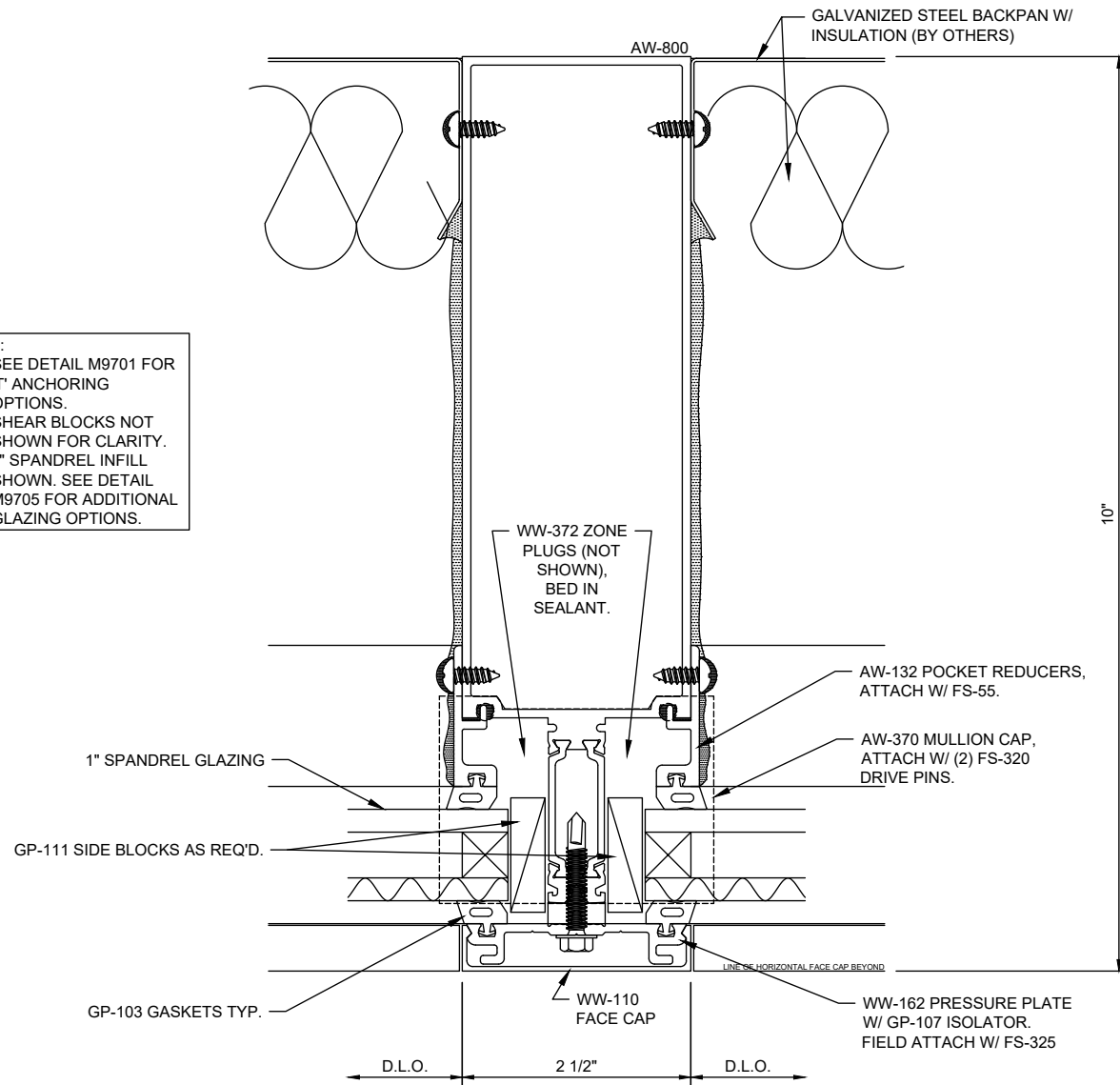


## Reliance™-HTC Intermediate Vertical at Spandrel - V9734



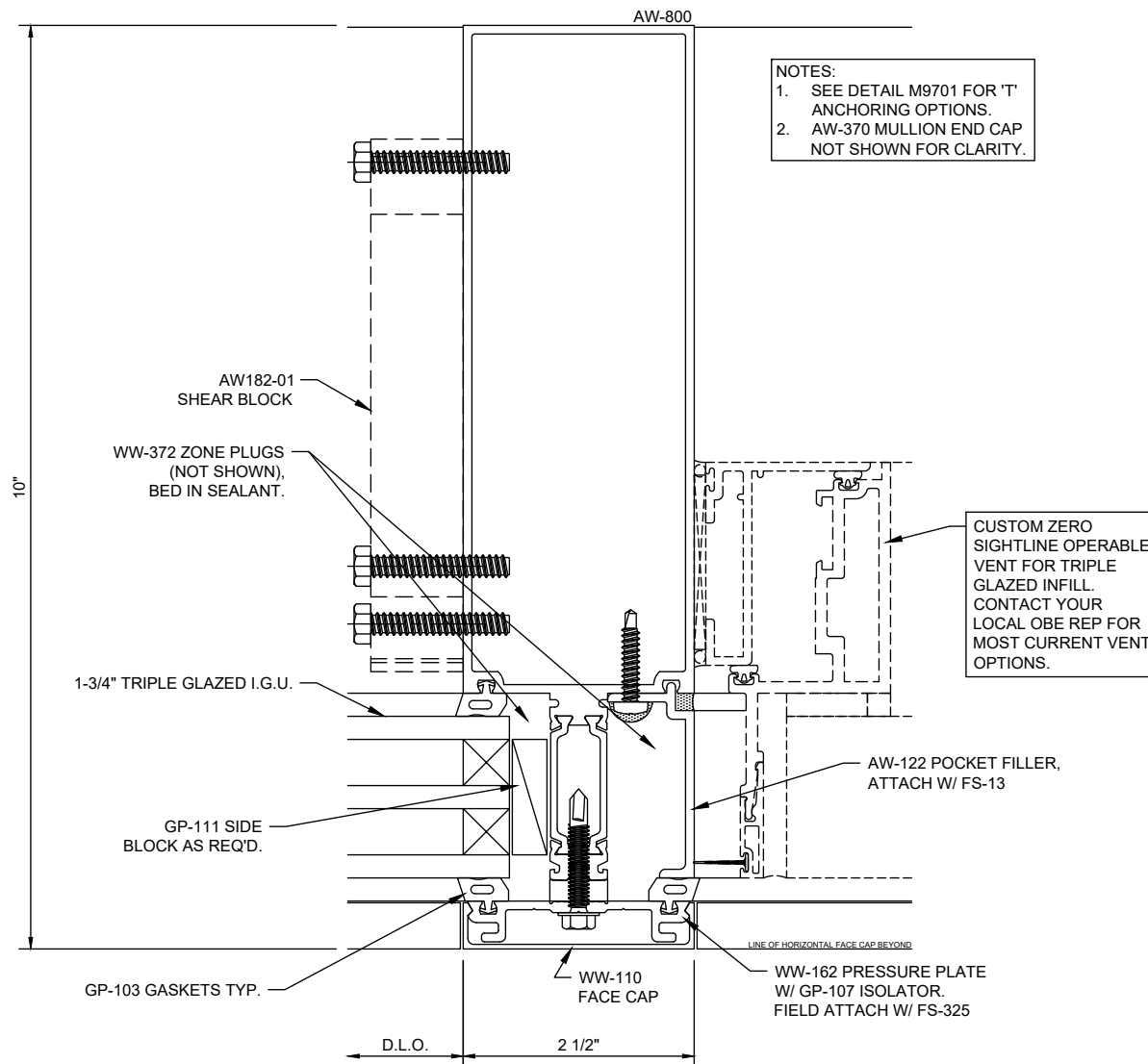
## Reliance™-HTC Jamb at Spandrel w/ Back Pan - V9735

- NOTES:
1. SEE DETAIL M9701 FOR 'T' ANCHORING OPTIONS.
  2. SHEAR BLOCKS NOT SHOWN FOR CLARITY.
  3. 1" SPANDREL INFILL SHOWN. SEE DETAIL M9705 FOR ADDITIONAL GLAZING OPTIONS.



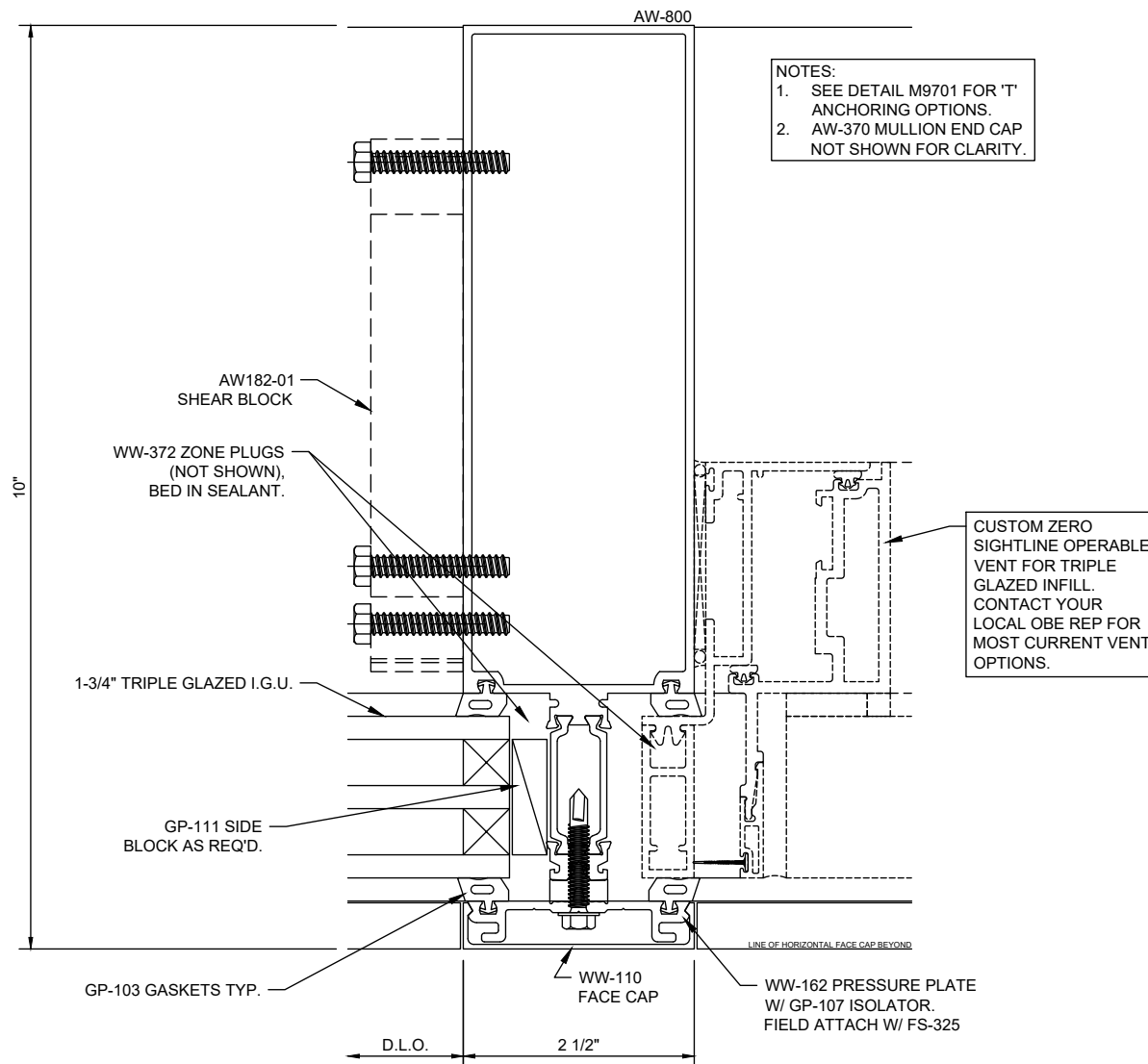
## Reliance™-HTC

### Vertical at Spandrel w/ Back Pan - V9736

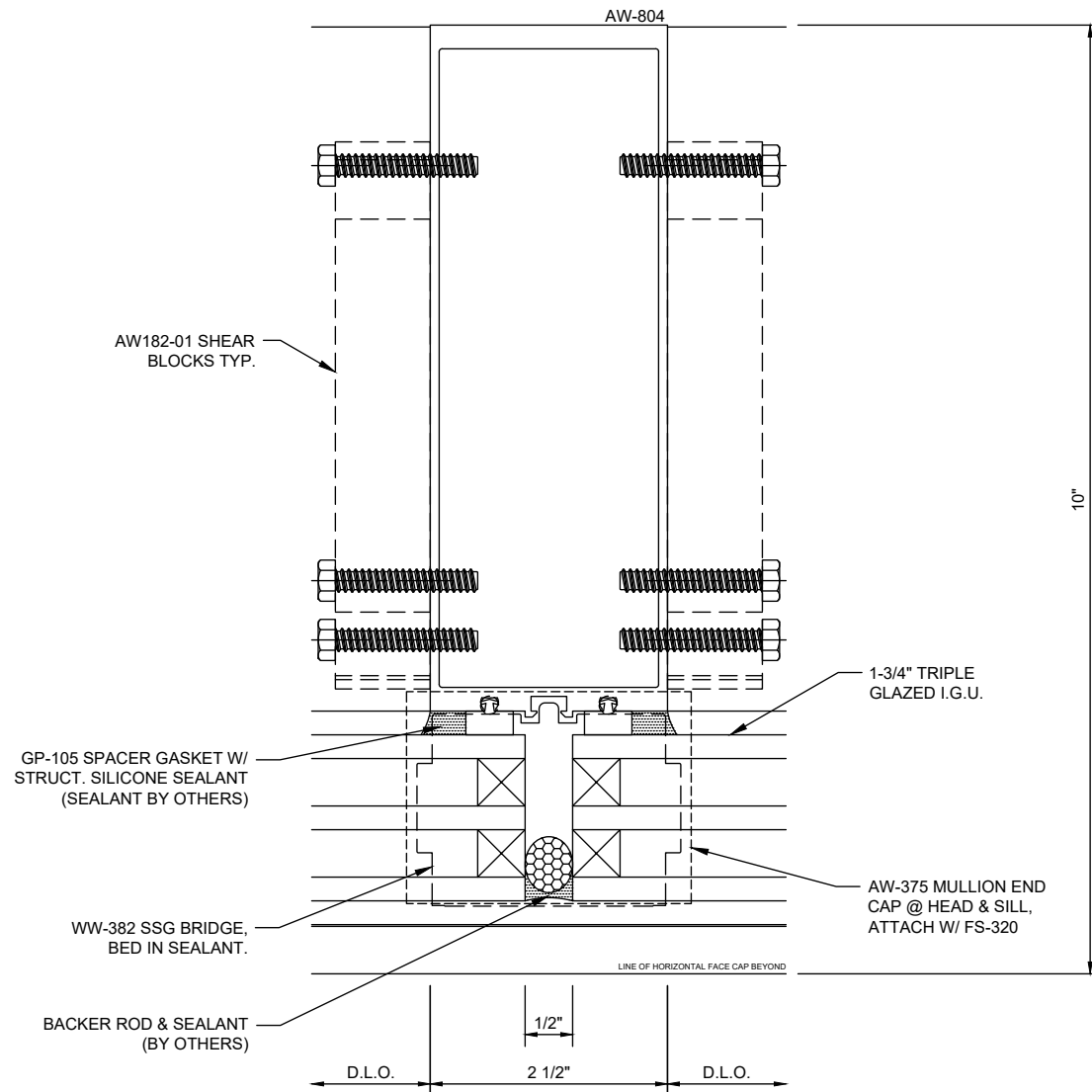


## Reliance™-HTC

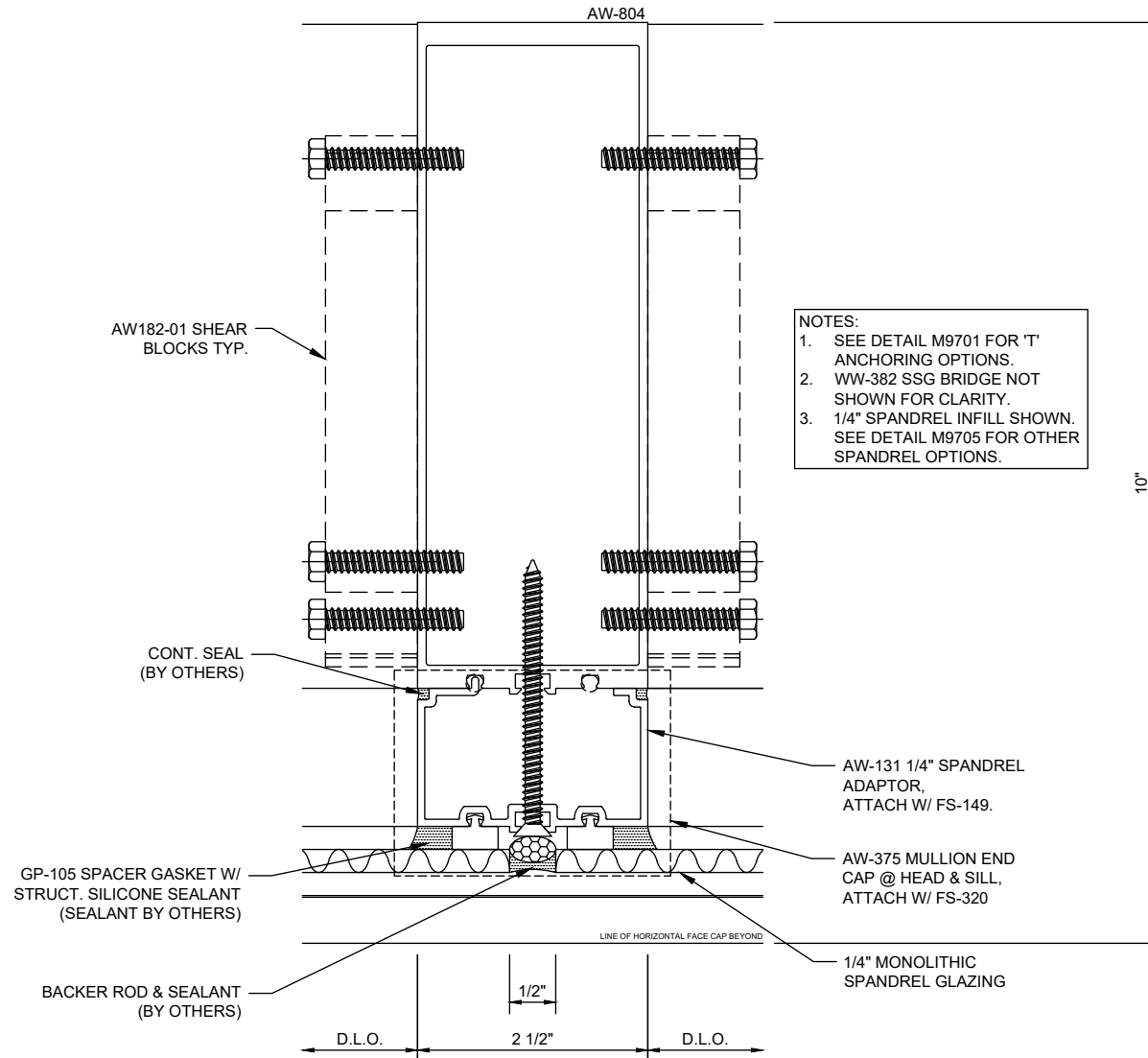
### Vertical at Operable Window - Flat Frame - V9737



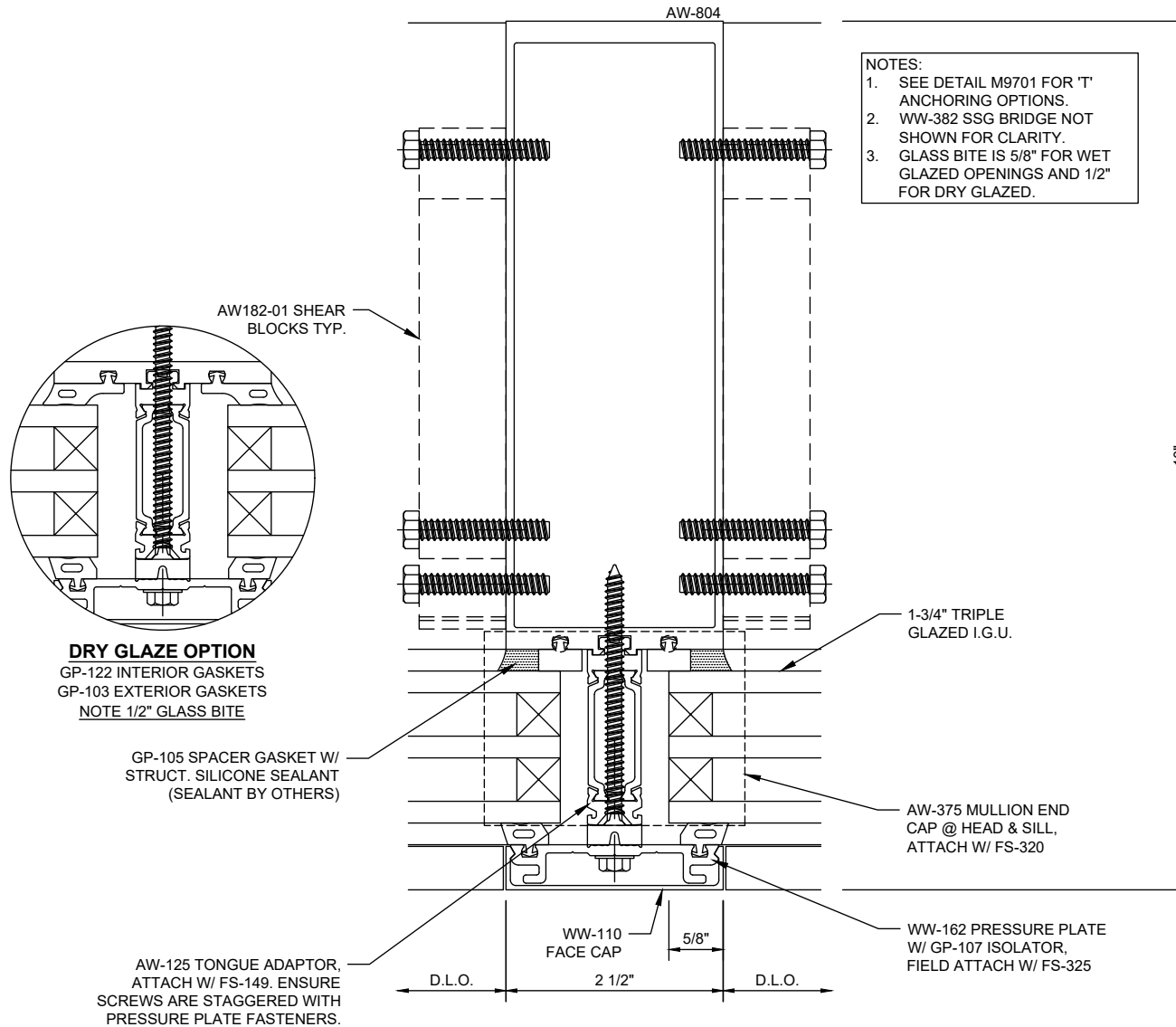
## Reliance™-HTC Vertical at Operable Window - Pocket Frame - V9738



## Reliance™-HTC SSG Vertical - V9746



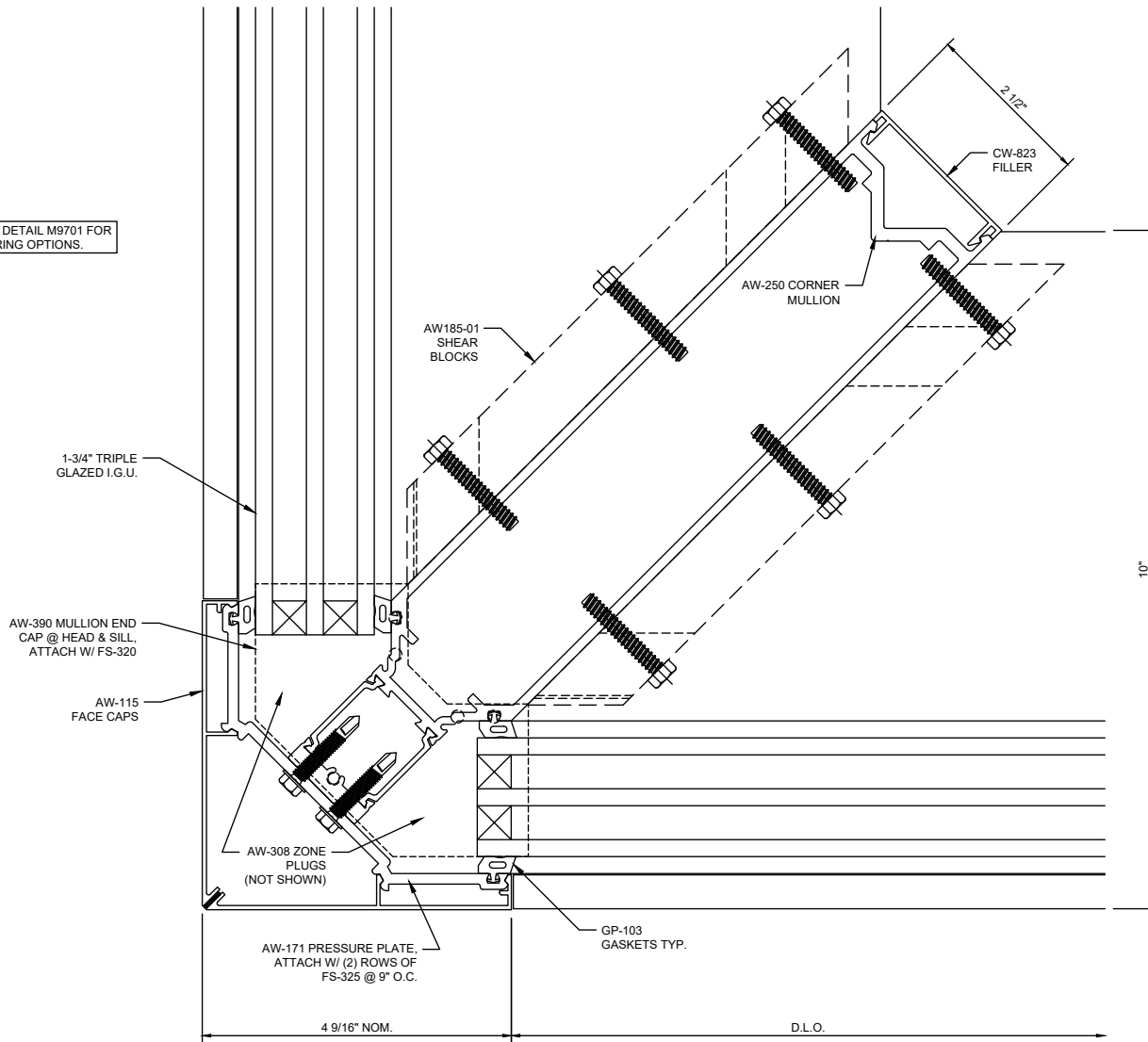
## Reliance™-HTC SSG Vertical at Spandrel - V9748



## Reliance™-HTC

### Vertical at SSG to Captured Transition - V9749

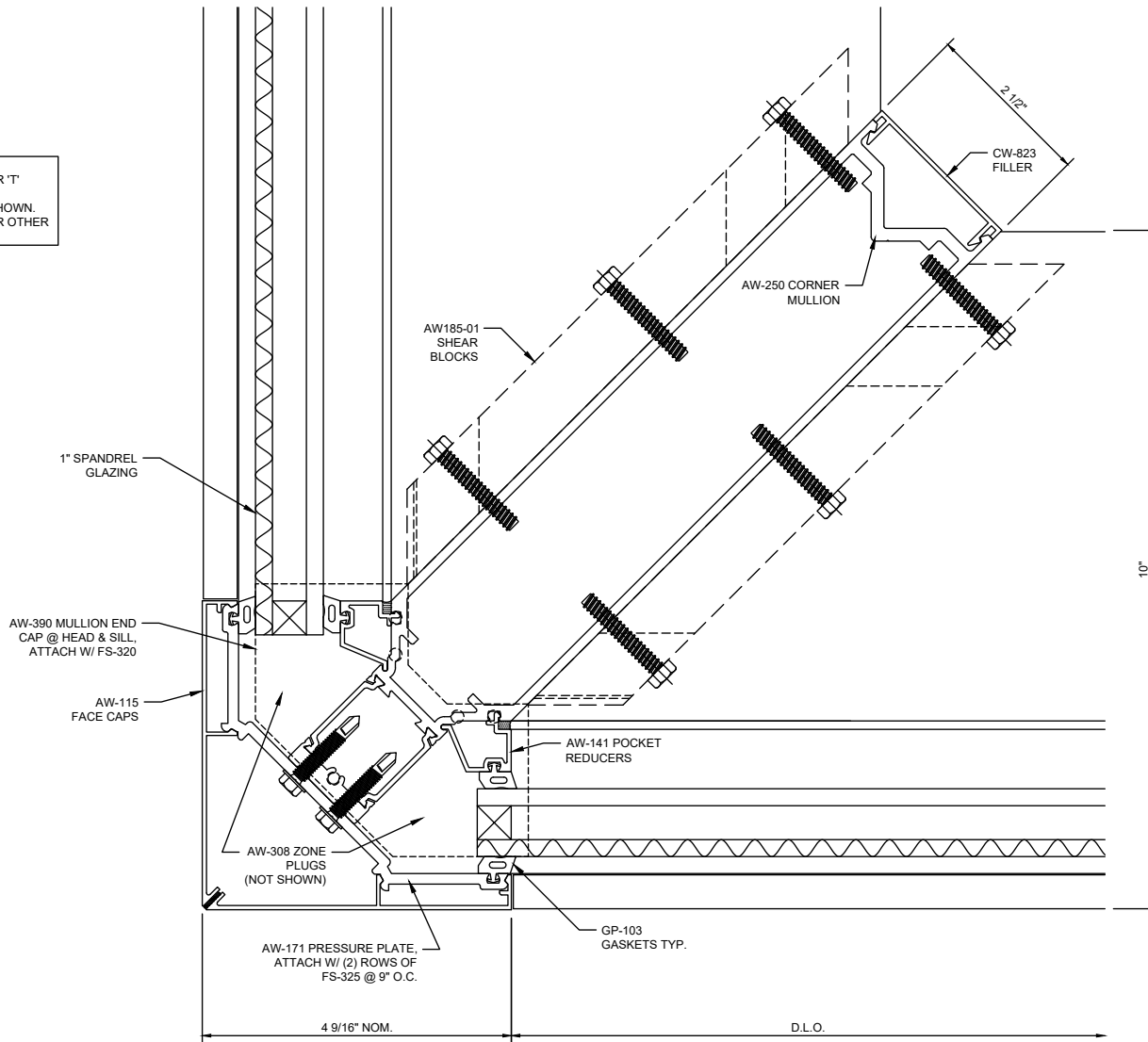
NOTE: SEE DETAIL M9701 FOR  
"T" ANCHORING OPTIONS.



## Reliance™-HTC 90° Outside Corner - V9739

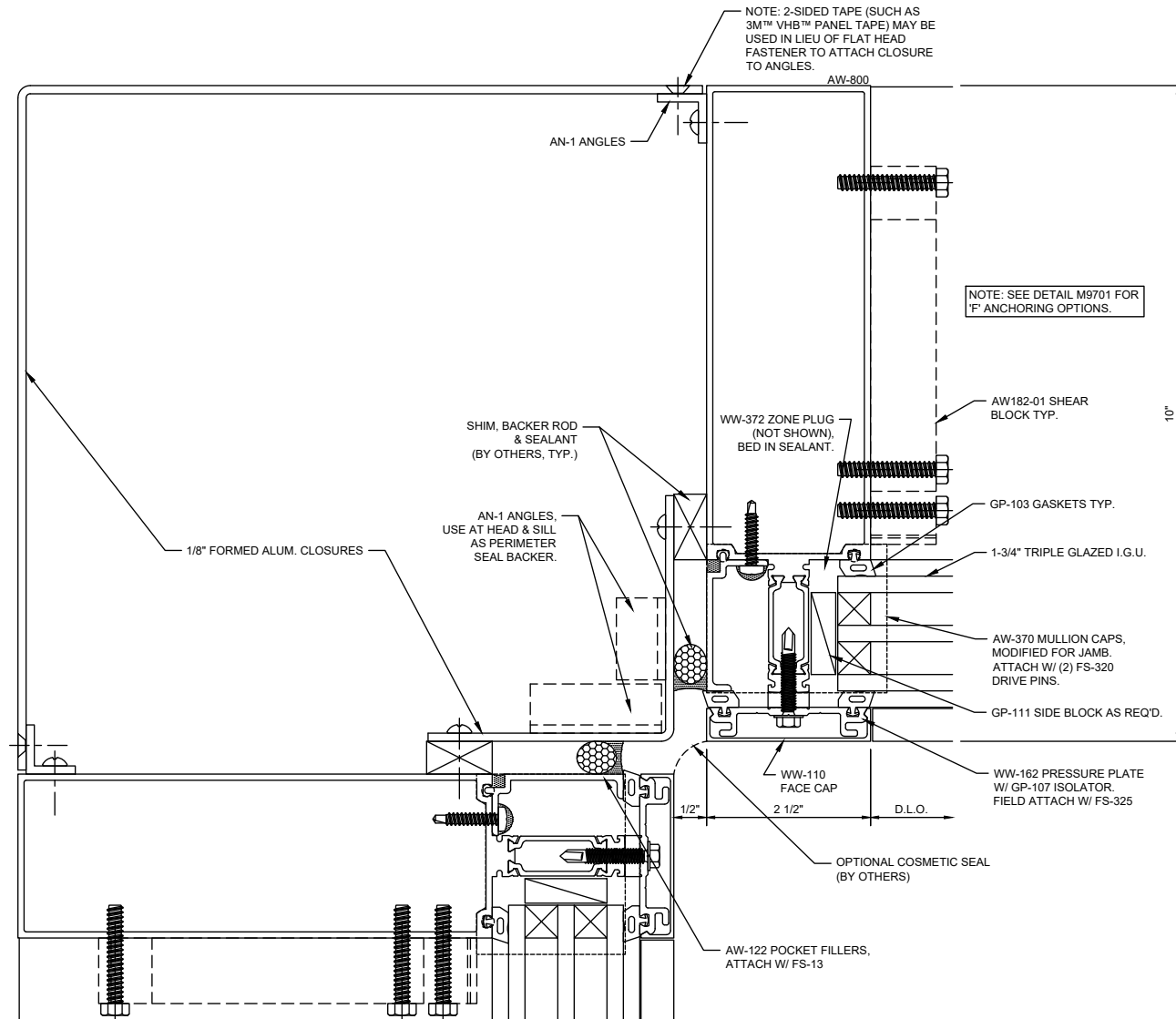
NOTES:

1. SEE DETAIL M9701 FOR 'T' ANCHORING OPTIONS.
2. 1" SPANDREL INFILL SHOWN. SEE DETAIL M9705 FOR OTHER SPANDREL OPTIONS.

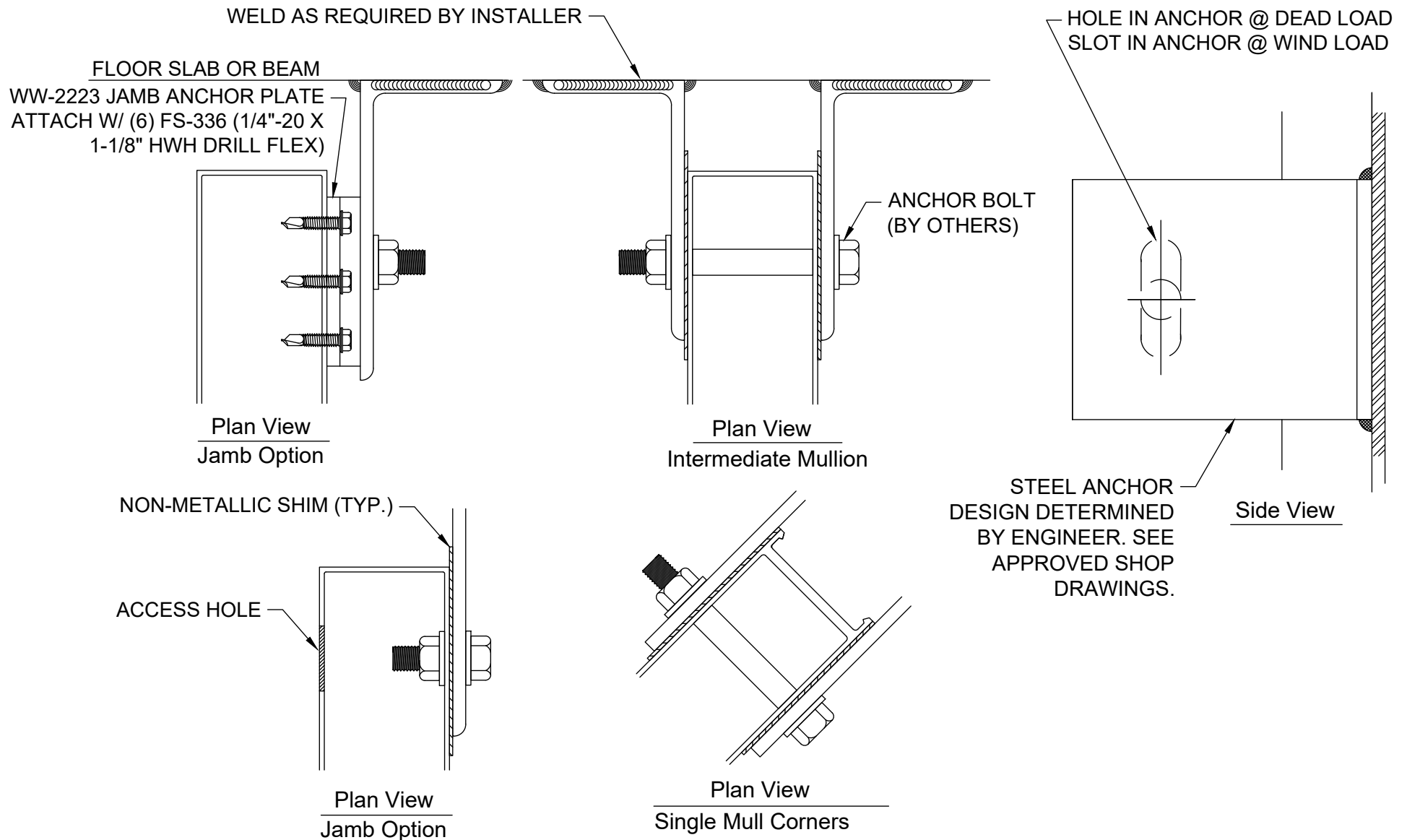


## Reliance™-HTC

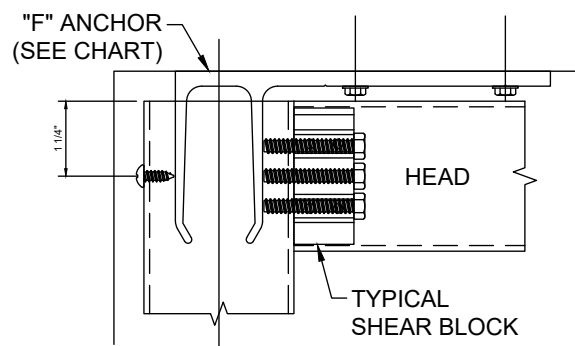
### 90° Outside Corner at Spandrel - V9740



## Reliance™-HTC 90° Inside Corner - V9742



## Standard Curtain Wall Steel Anchoring - M0042

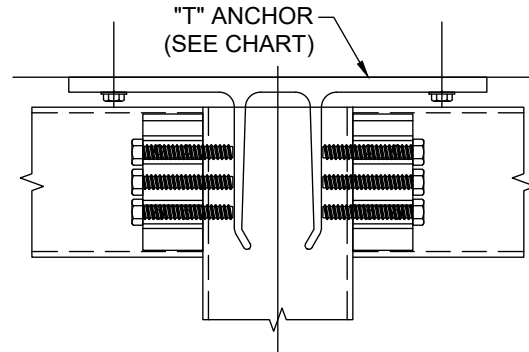


JAMB

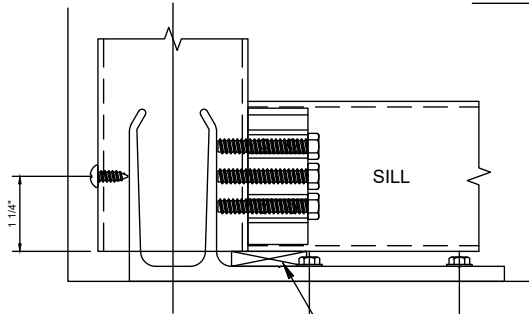
HEAD

TYPICAL  
SHEAR BLOCK

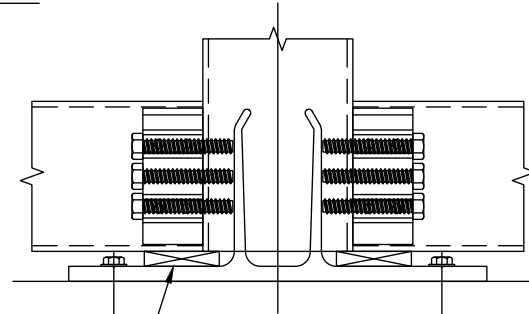
FRONT VIEW



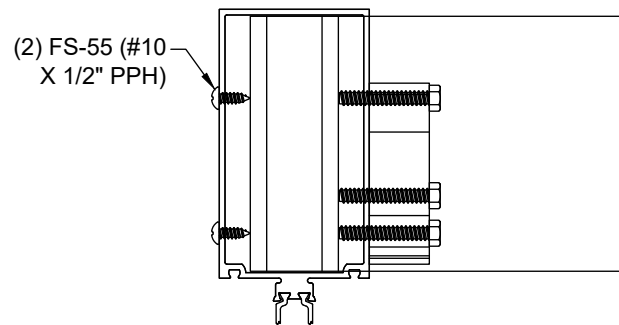
MULLION



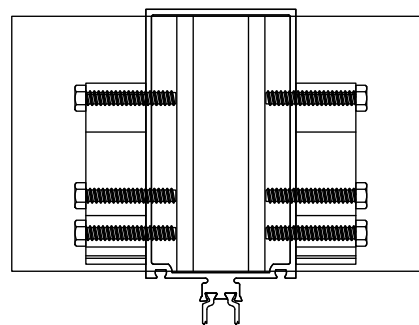
SHIM UNDERNEATH MULLION  
(BY OTHERS)



ANCHOR BOLT  
(SEE NOTE)



(2) FS-55 (#10  
X 1/2" PPH)



PLAN VIEW

"F" ANCHOR CHART

PART NO.	MULLION
WW-103-11	AW-500 / AW-550
WW-103-12	AW-504
WW-103-13	AW-800 / AW-850
WW-103-14	AW-804

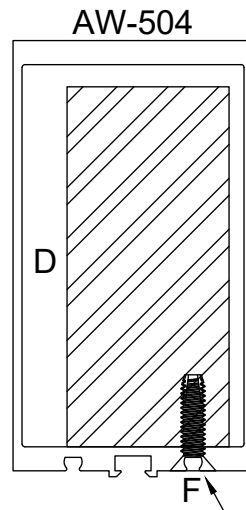
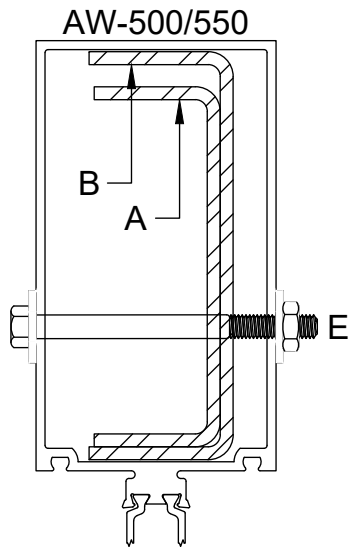
"T" ANCHOR CHART

PART NO.	MULLION
WW-102-16	AW-500 / AW-550
WW-102-17	AW-504
WW-102-18	AW-240 / AW-241 (90°, SHALLOW)
WW-102-19	AW-250 / AW-251 (90°, DEEP)
WW-102-20	AW-800 / AW-850
WW-102-21	AW-804

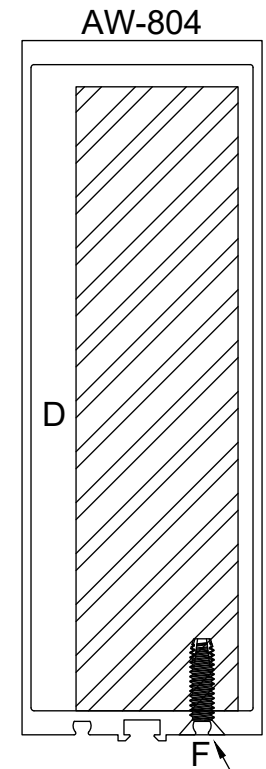
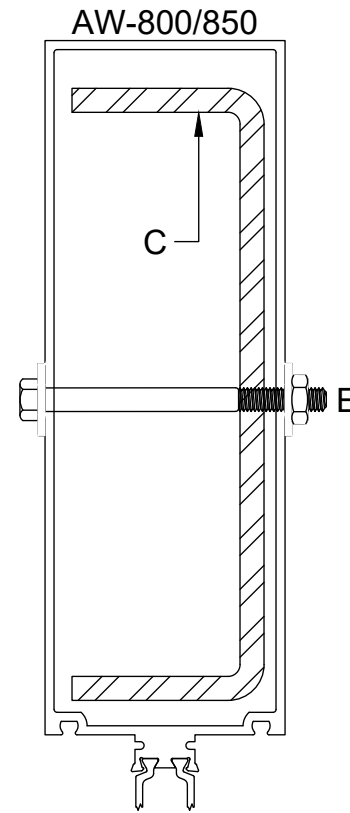
**NOTE:**

1. REFERENCE INSTALLATION MANUAL FOR MORE INFORMATION.
2. ANCHOR BOLT SIZE AND LAYOUT DETERMINED PER PROJECT VIA STRUCTURAL REVIEW. REFERENCE APPROVED SHOP DRAWINGS.

# Reliance™-HTC 'F' and 'T' Mullion Anchoring - M9701



DRILL AND COUNTERSINK FOR  
1/4" FLAT HEAD FASTENER AND  
ATTACH W/ FS-259, SPACING  
PER STRUCTURAL REVIEW.  
REMOVE SPACER GASKET DART  
AT FASTENER LOCATIONS.



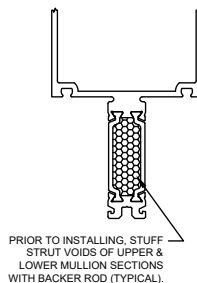
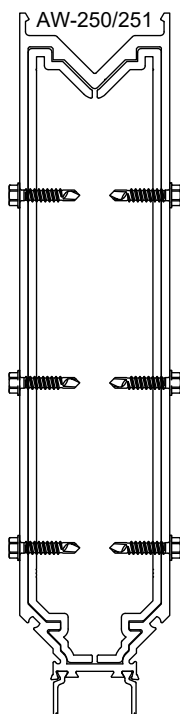
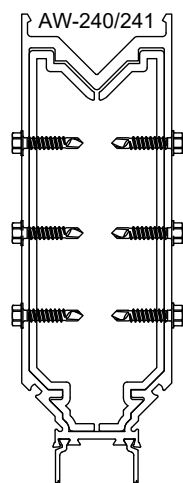
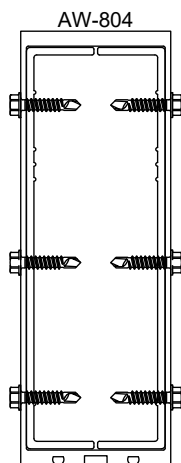
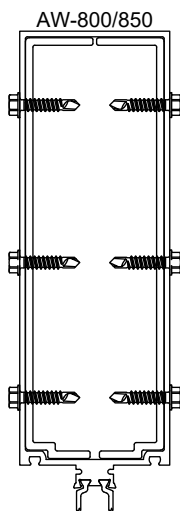
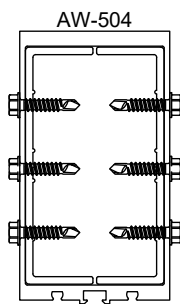
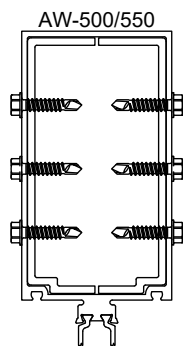
DRILL AND COUNTERSINK FOR  
1/4" FLAT HEAD FASTENER AND  
ATTACH W/ FS-259, SPACING  
PER STRUCTURAL REVIEW.  
REMOVE SPACER GASKET DART  
AT FASTENER LOCATIONS.

STEEL REINFORCING CHART	
A	PP-17 (1 5/16" X 3 3/4" 10 GA.)
B	PP-16 (1 1/2" X 4 1/4" 10 GA.)
C	RS-36 (2" X 6-3/8" X 1/4" THICK)
D	STEEL BAR OPTION (BY OTHERS)
E	1/4"-20 X 3" HEX HEAD BOLT 1/4"-20 HEX NUT & WASHERS
F	FS-259 (1/4"-20 X 1" PFH THREAD CUTTING SCREW)

#### NOTES:

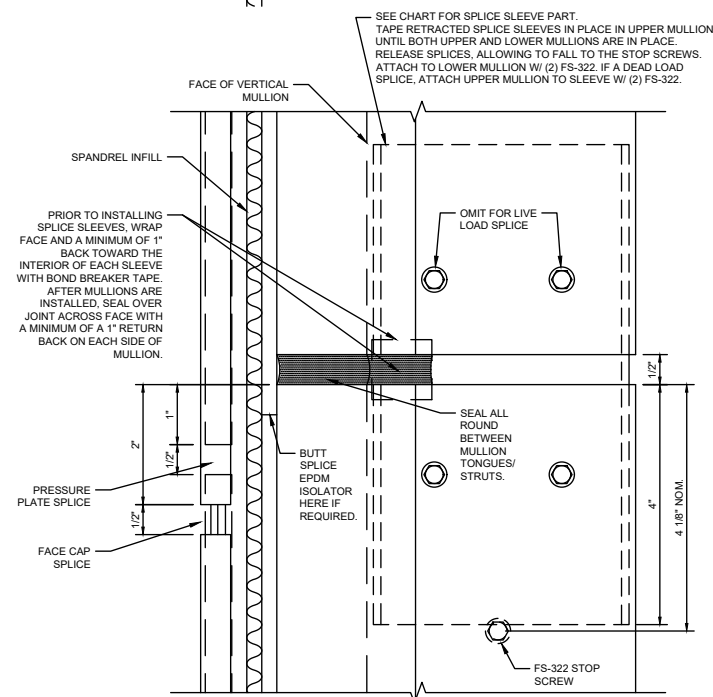
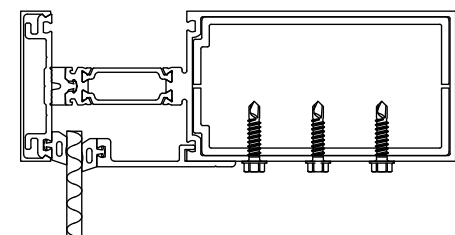
1. STEEL REQUIREMENTS AND ATTACHMENT LAYOUT  
DETERMINED PER PROJECT VIA STRUCTURAL REVIEW.  
REFERENCE APPROVED SHOP DRAWINGS.

## Reliance™-HTC Steel Reinforcement - M9702



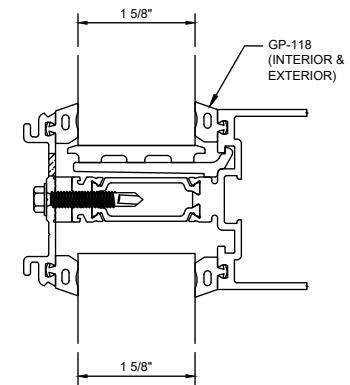
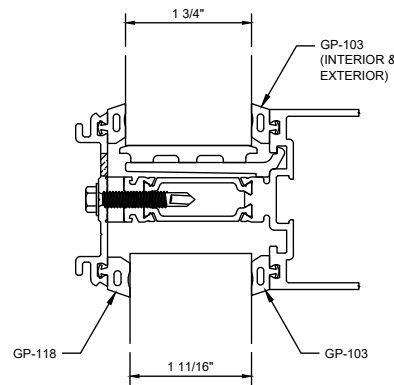
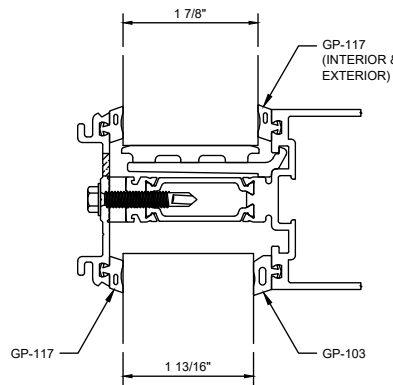
MULLION SPLICE CHART	
MULLION	SPLICE PART
AW-500 AW-550	AW-194-01
AW-504	AW-195-01
AW-800 AW-850	AW196-01
AW-804	AW-197-01
AW-240 AW-241	AW-198-01
AW-250 AW-251	AW-200-01

- NOTES:
1. FS-322 (#12-14 X 1" HWH DRILLING SCREW) IS TYPICAL FOR ATTACHMENT OF SPLICE SLEEVES.
  2. FS-322 STOP SCREWS SHOWN DASHED.
  3. DETAIL DRAWN FOR A TOTAL OF 1/2" MOVEMENT (PLUS/MINUS 1/4").
  4. SPLICE DETAIL SHOWS THE 1-3/4" GLAZED SHALLOW SYSTEM W/ 1/4" SPANDREL INFILL. OTHER SYSTEM CONFIGURATIONS ARE SIMILAR. SEE DETAIL M970X FOR INFILL OPTIONS AND SPANDREL ADAPTORS.
  5. CAPTURED VERTICAL SPLICE PROCEDURE IS SHOWN; REFERENCE INSTALLATION MANUAL FOR SSG VERTICAL SPLICE PROCEDURE.

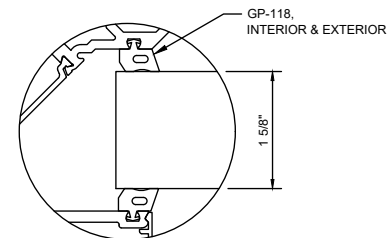
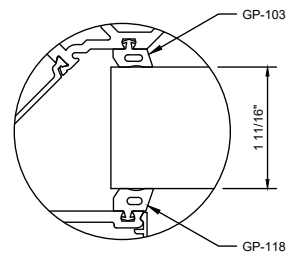
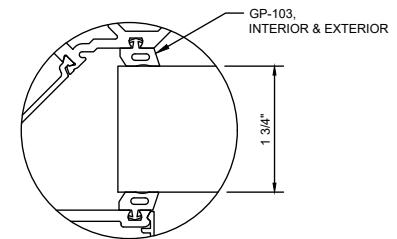
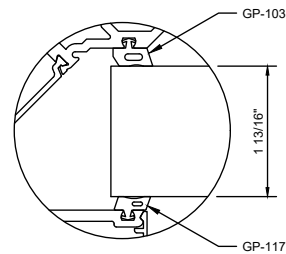
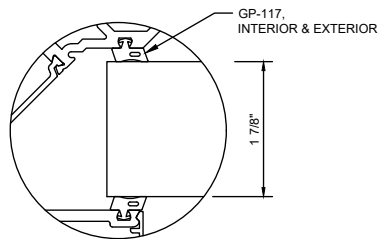


PROFILE VIEW

## Reliance™-HTC Mullion Splicing - M9703



### HORIZONTAL & VERTICAL VISION GLAZING OPTIONS

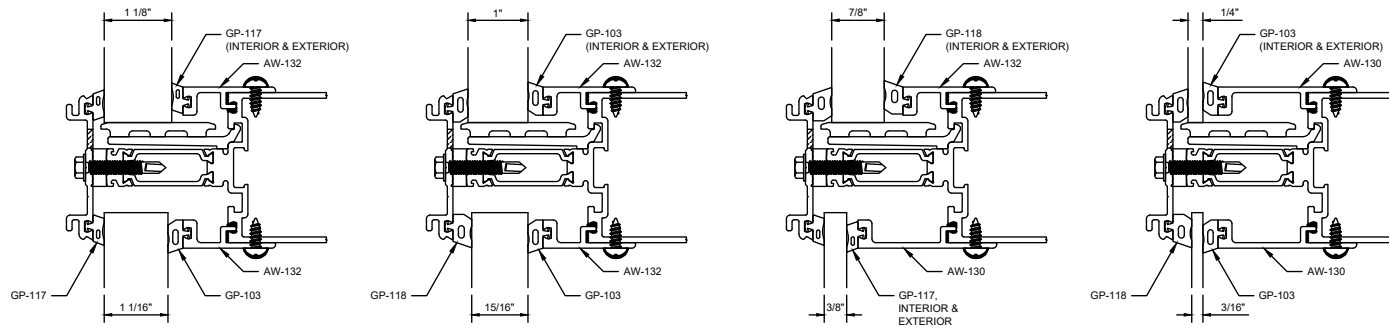


### CORNER VISION GLAZING OPTIONS

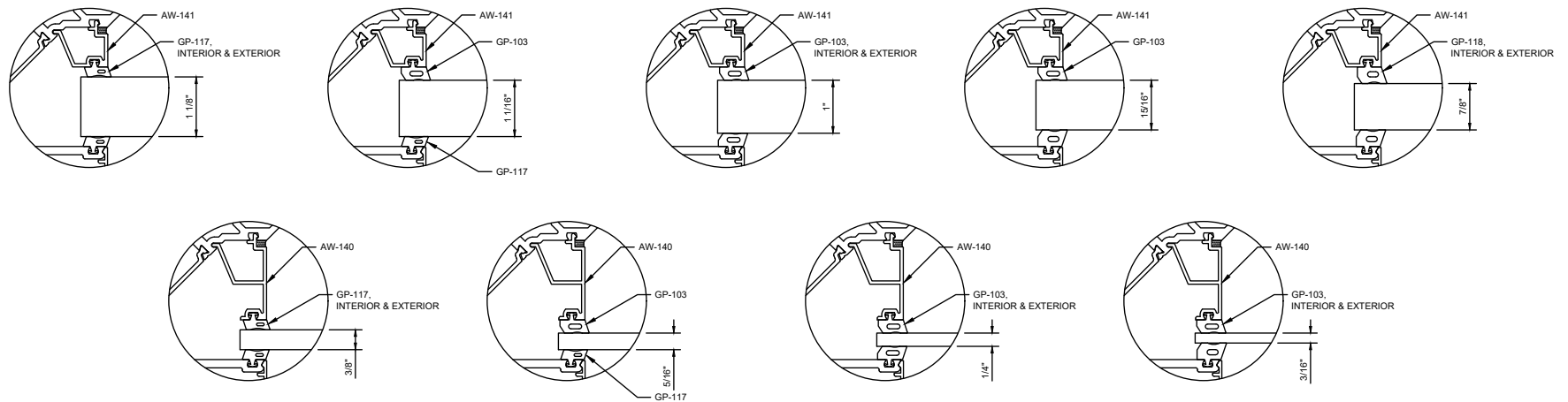
#### NOTES:

1. ALL INFILL OPTIONS USE AW-121-01 SETTING CHAIRS AND GP-175 SETTING BLOCKS.
2. GLASS POCKET DIMENSION IS 2-1/4\".
3. NOTE THAT IF SSG VERTICALS ARE INCLUDED IN PROJECT, A GLAZING OPTION USING GP-103 ON THE INTERIOR SHOULD BE USED FOR PROPER GLASS ALIGNMENT WITH VERTICAL SSG SPACERS.

## Reliance™-HTC Vision Glazing Options - M9704



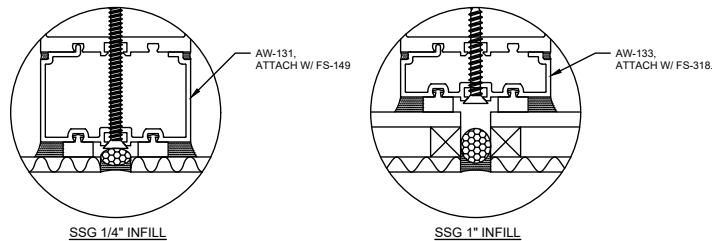
HORIZONTAL & VERTICAL SPANDREL GLAZING OPTIONS



CORNER SPANDREL GLAZING OPTIONS

**NOTES:**

1. FS-55 IS TYPICAL FOR ATTACHMENT OF SCREW-APPLIED SPANDREL ADAPTORS. ATTACH @ 12" O.C. & CAP SEAL ALL FASTENERS.
2. ALL INFILL OPTIONS USE AW-121 SETTING CHAIRS AND GP-175 SETTING BLOCKS.
3. ALL SPANDREL ADAPTORS ARE SET IN SEALANT.
4. GLASS POCKET DIMENSION IS 1-1/2" WITH AW-132/AW-141, AND 3/4" WITH AW-130/AW-140.
5. ATTACH SSG SPANDREL ADAPTORS W/ FS-149 (#12 X 3" PFH SMS) @ 12" O.C. FOR 1/4" INFILL, OR FS-318 (#12 X 1-3/4" PFH SMS) @ 12" O.C. FOR 1" INFILL.



SSG SPANDREL GLAZING OPTIONS

# Reliance™-HTC Spandrel Glazing Options - M9705