

Oldcastle BuildingEnvelope®

1-866-Oldcastle (653-2278) - www.obe.com

<Product Name and Configuration> <System Dimensions> w/ X" Typical Infill

(Drawing numbers---i.e., V9831---used as CAD detail reference only)

Elevation

V9846

SSG Vertical

V9848

SSG Vertical at Spandrel

V9849

Vertical at SSG to Captured Transition

Horizontal Details

H9831 Head

H9832 Intermediate Horizontal

H9833 Horizontal at Vision over Spandrel

H9834 Horizontal at Vision over Spandrel w/ Back Pan

H9838 Sill

H9839 Horizontal at Operable Window - Flat Frame

Corner Details

V9839 90° Outside Corner

V9840 90° Outside Corner at Spandrel

V9842 90° Inside Corner

Vertical Details

V9831 Jamb

V9832 Typical Vertical

V9833 Jamb at Spandrel

V9834 Intermediate Vertical at Spandrel

V9835 Jamb at Spandrel w/ Back Pan

V9836 Intermediate Vertical at Spandrel w/ Back Pan

V9837 Vertical at Operable Window - Flat Frame

Misc. Details

M0042 Steel Mid-Span Anchoring

M9701 'F' & 'T' Mullion Anchoring

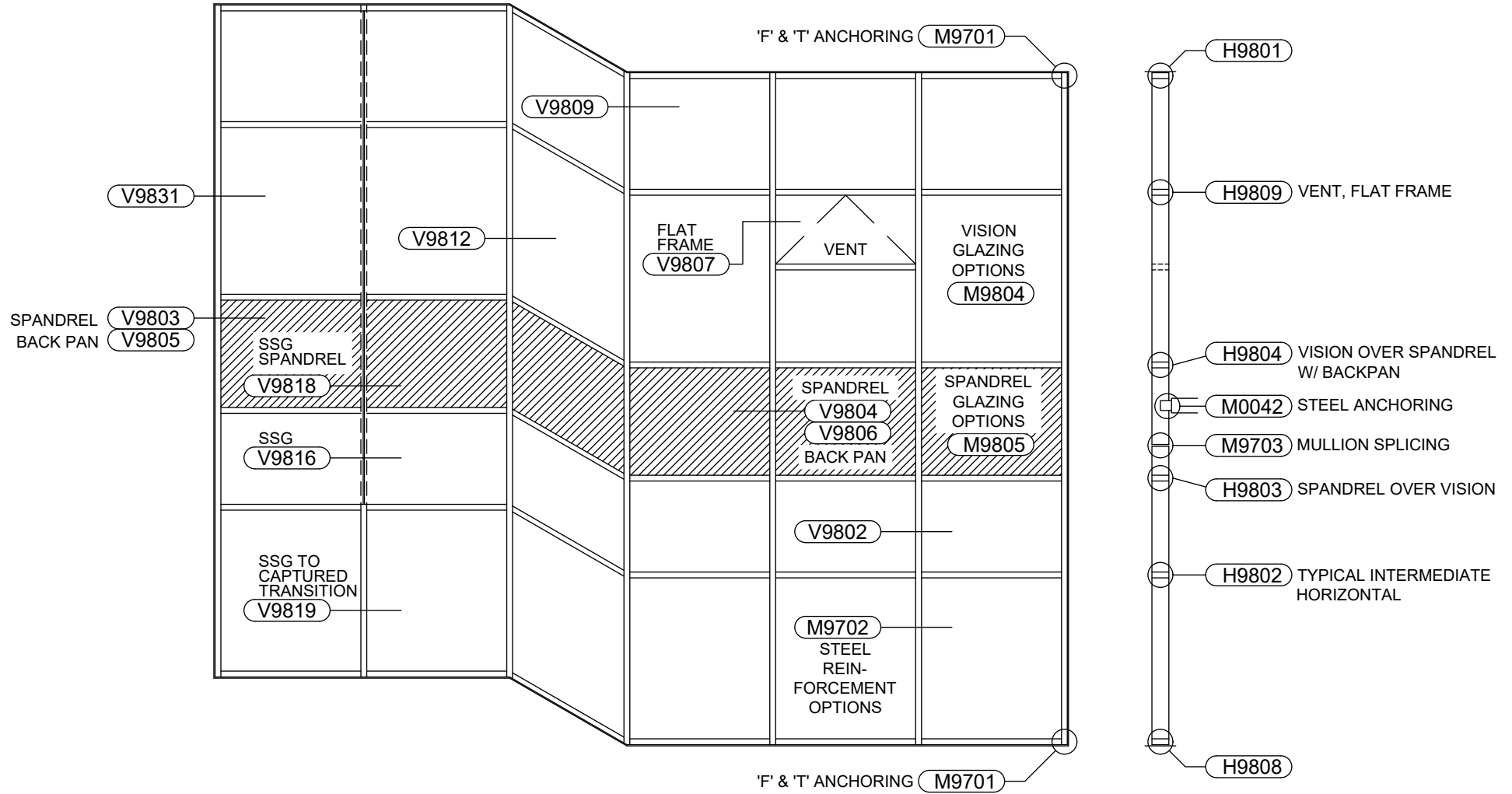
M9702 Steel Reinforcement Options

M9703 Mullion Splicing

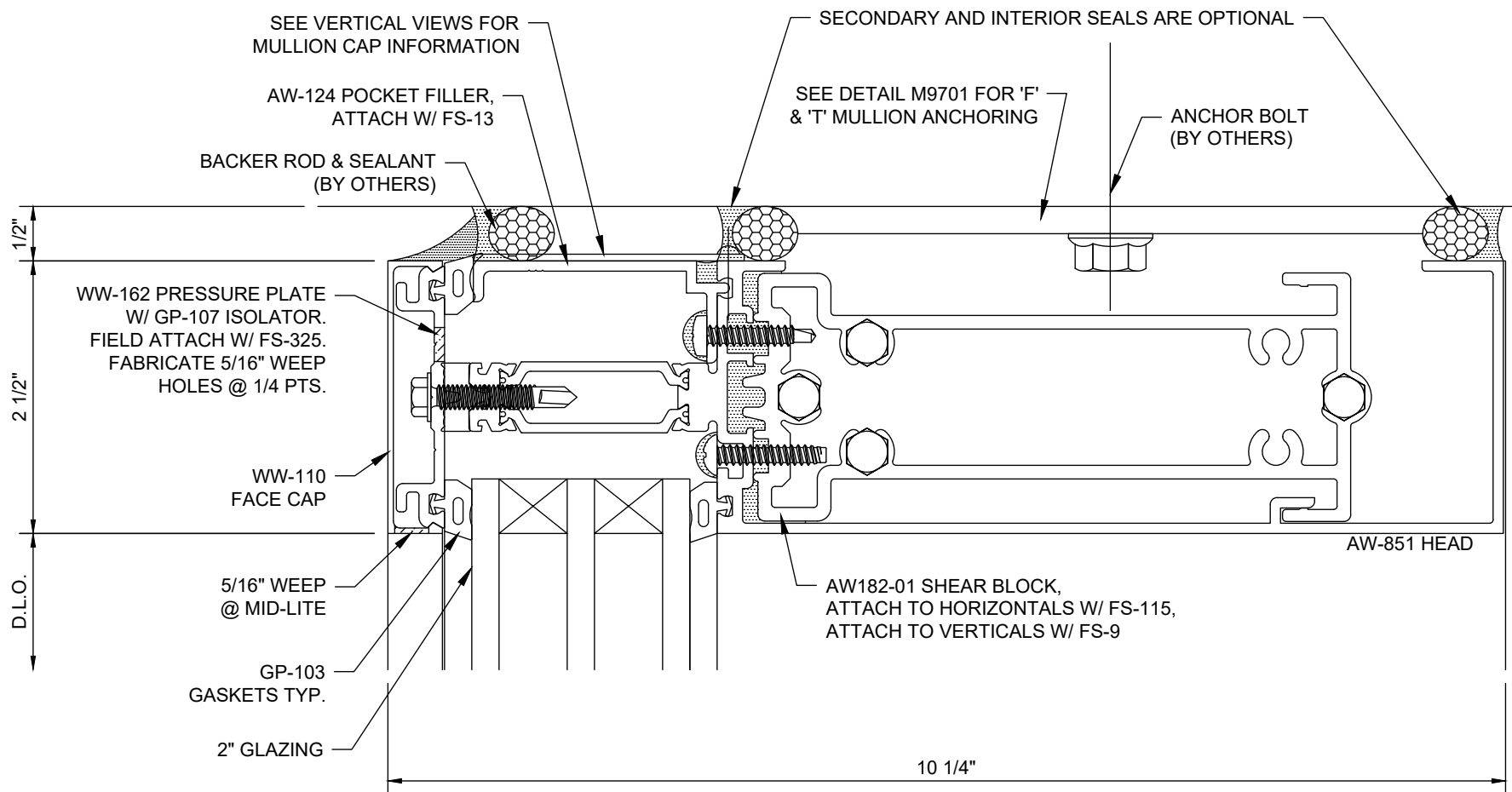
M9804 Vision Glazing Options

M9805 Spandrel Glazing Options

Table of Contents

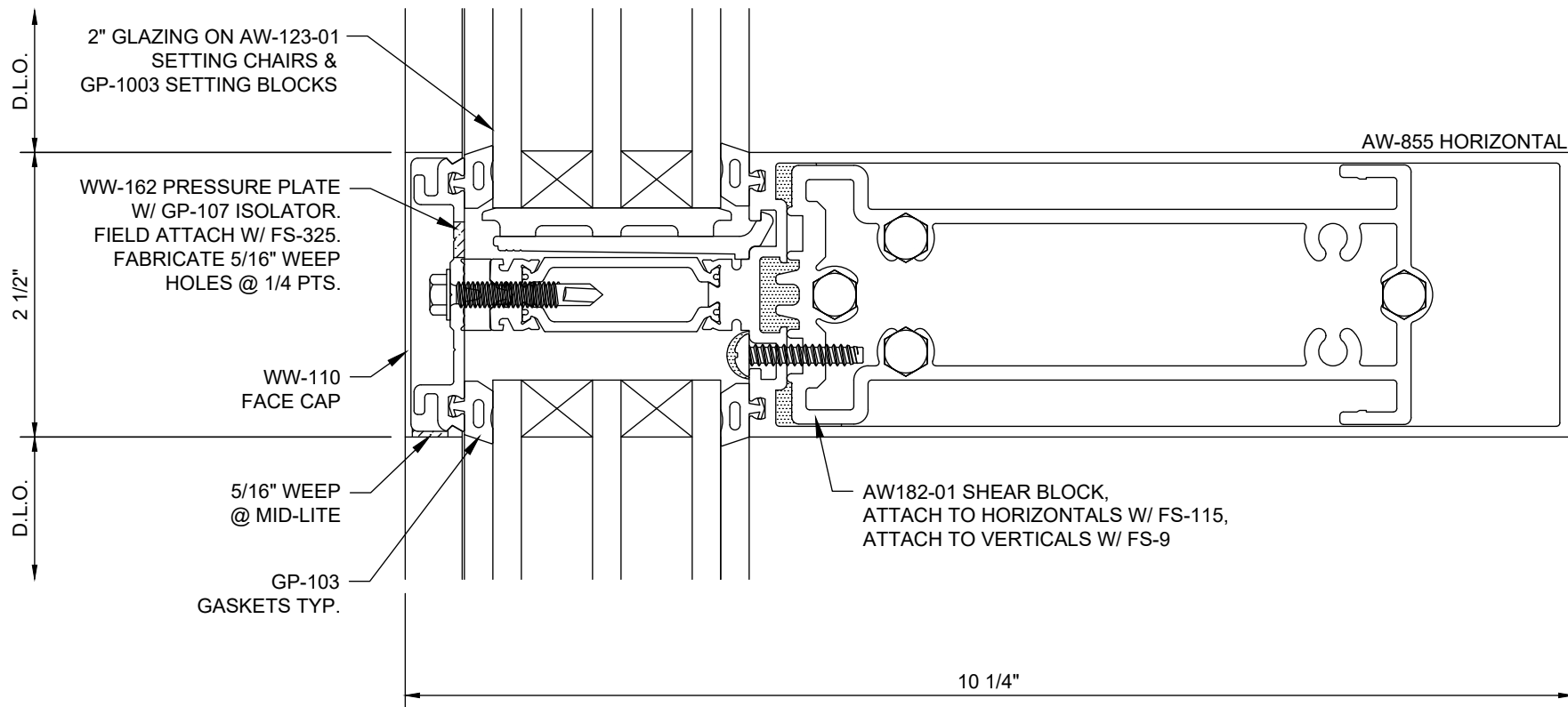


Reliance®-HTC 2-1/2" x 10-1/4" w/ 2" Typical Infill - Elevation



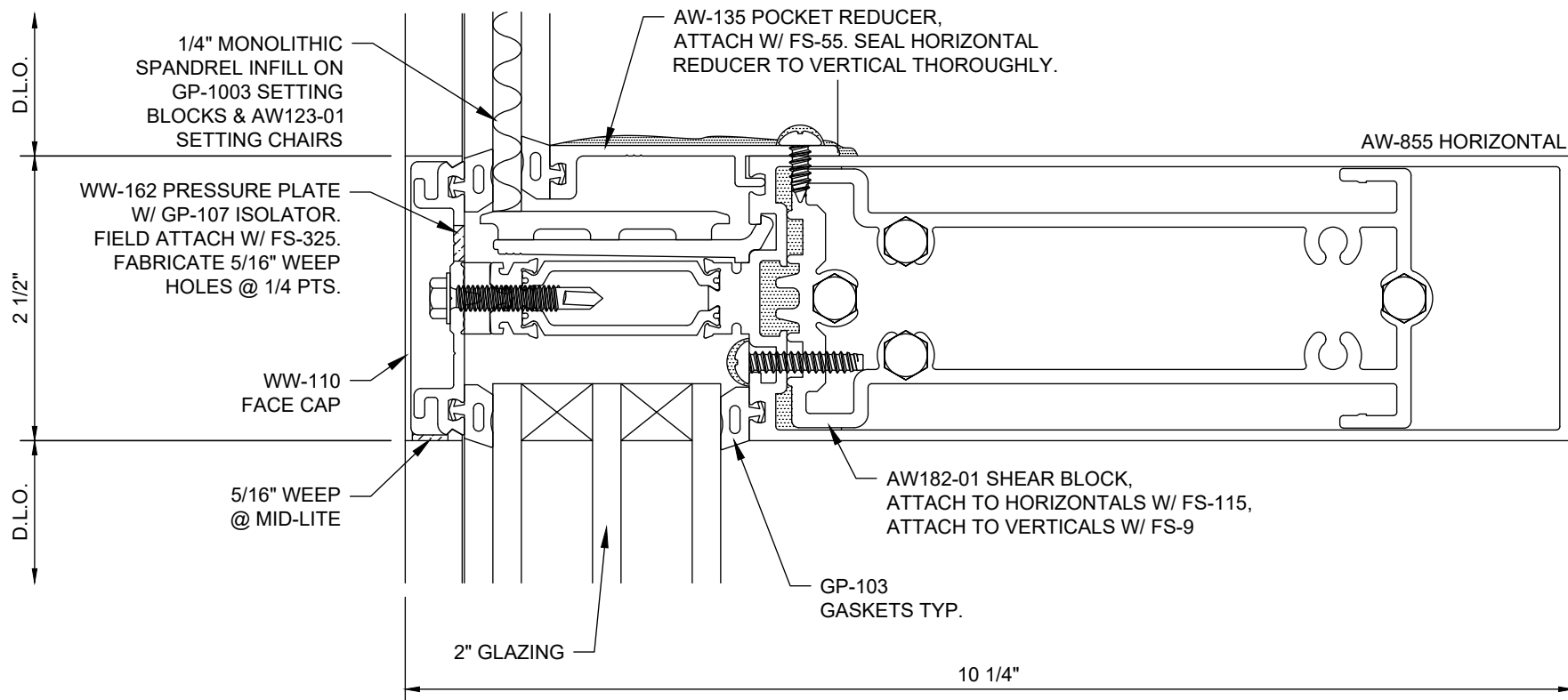
NOTE: UPPER SHEAR BLOCK TO HORIZONTAL FASTENER OMITTED FOR CLARITY.

Reliance®-HTC Head - H9831



NOTE: UPPER SHEAR BLOCK TO HORIZONTAL
FASTENER OMITTED FOR CLARITY.

Reliance®-HTC Intermediate Horizontal - H9832



NOTES:

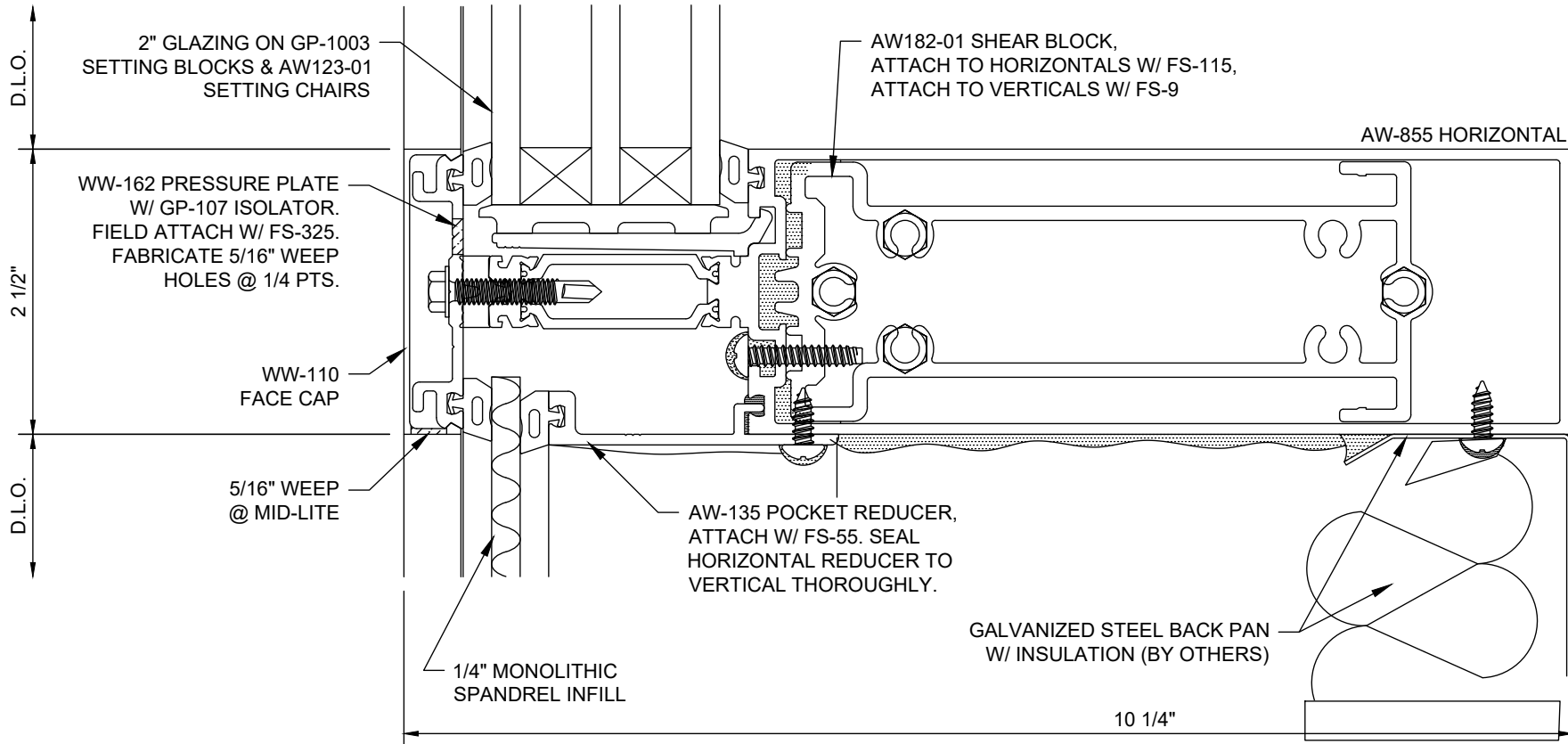
1. UPPER SHEAR BLOCK TO HORIZONTAL FASTENER OMITTED FOR CLARITY.
2. 1/4" SPANDREL INFILL SHOWN; SEE DETAIL M9805 FOR ADDITIONAL SPANDRELL INFILL OPTIONS.

Reliance®-HTC

Horizontal at 1/4" Spandrel over Vision - H9833

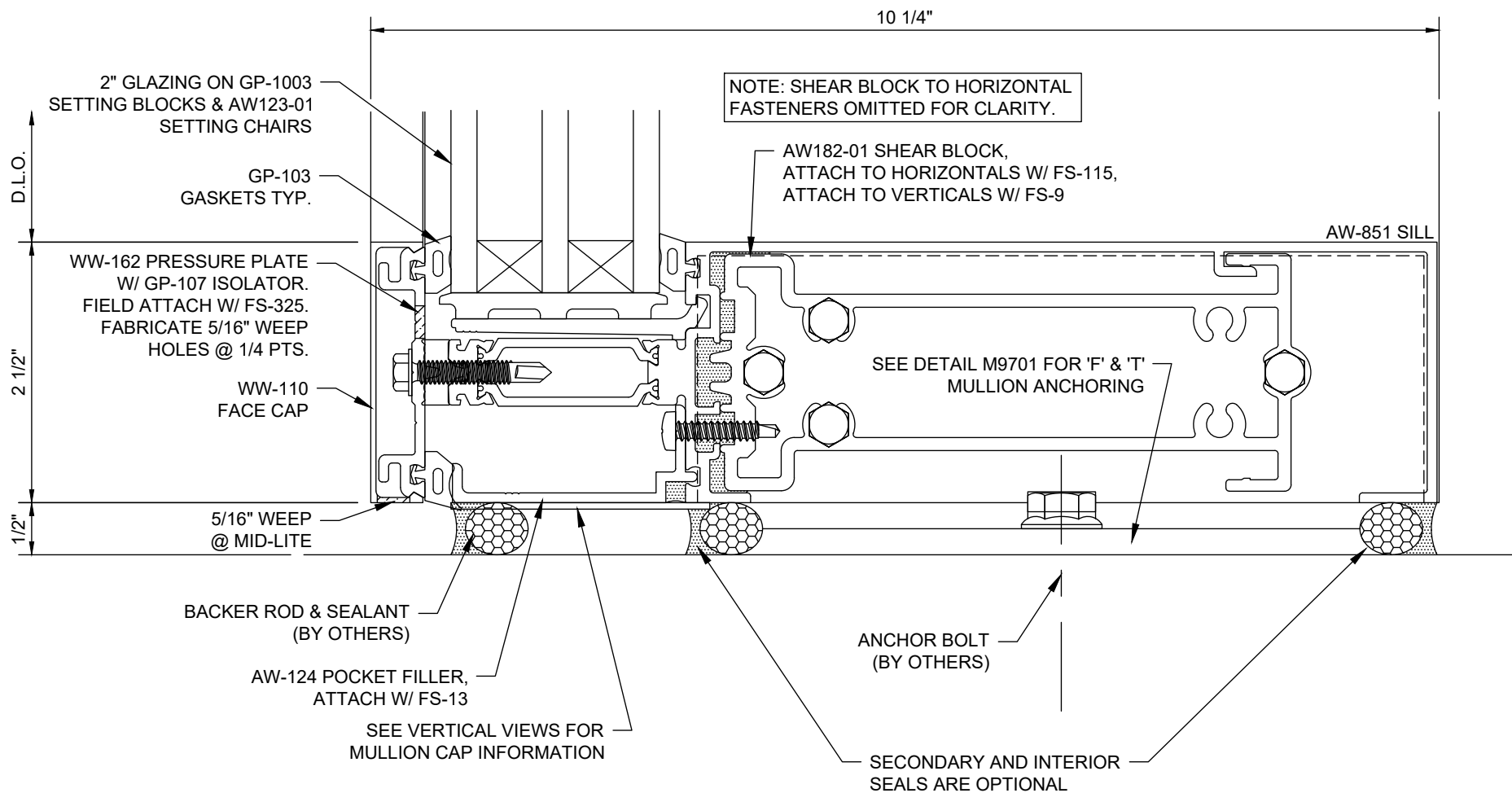
NOTES:

1. UPPER SHEAR BLOCK TO HORIZONTAL FASTENER OMITTED FOR CLARITY.
2. 1/4" SPANDREL INFILL SHOWN; SEE DETAIL M9805 FOR ADDITIONAL SPANDREL INFILL OPTIONS.

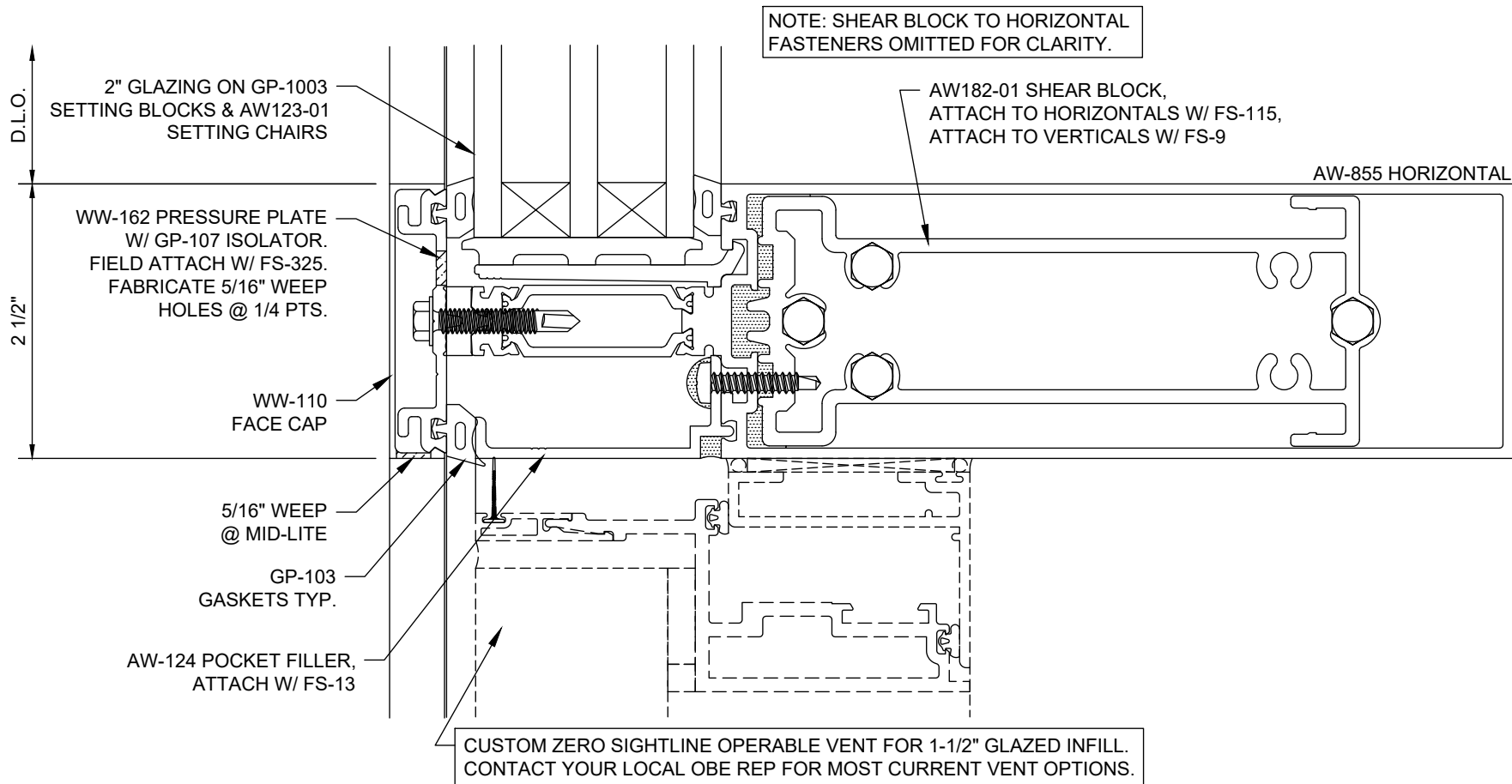


Reliance®-HTC

Horizontal at Vision over 1/4" Spandrel w/ Backpan - H9834

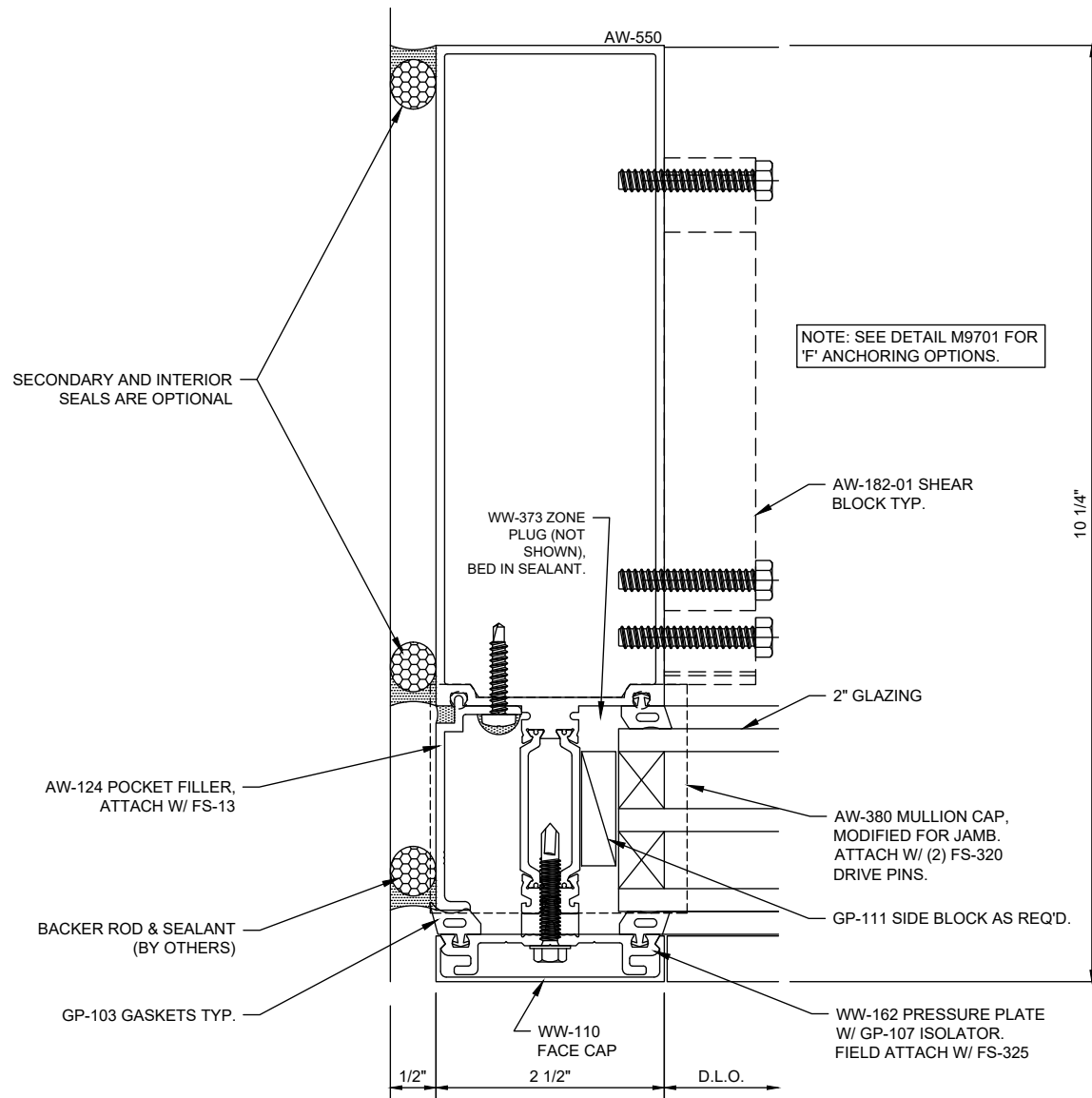


Reliance®-HTC Sill - H9838

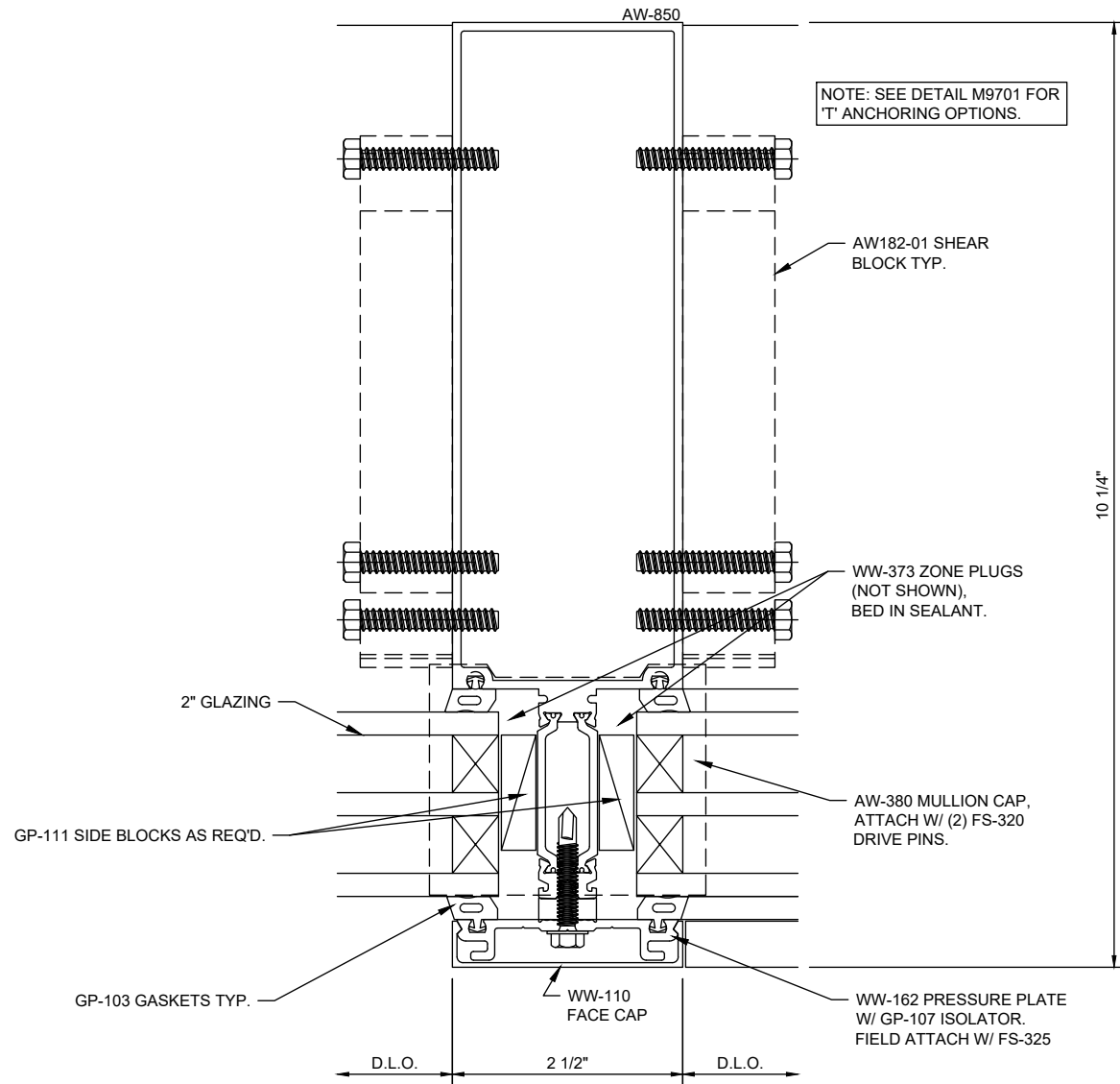


Reliance®-HTC

Horizontal at Operable Window - Flat Frame - H9839

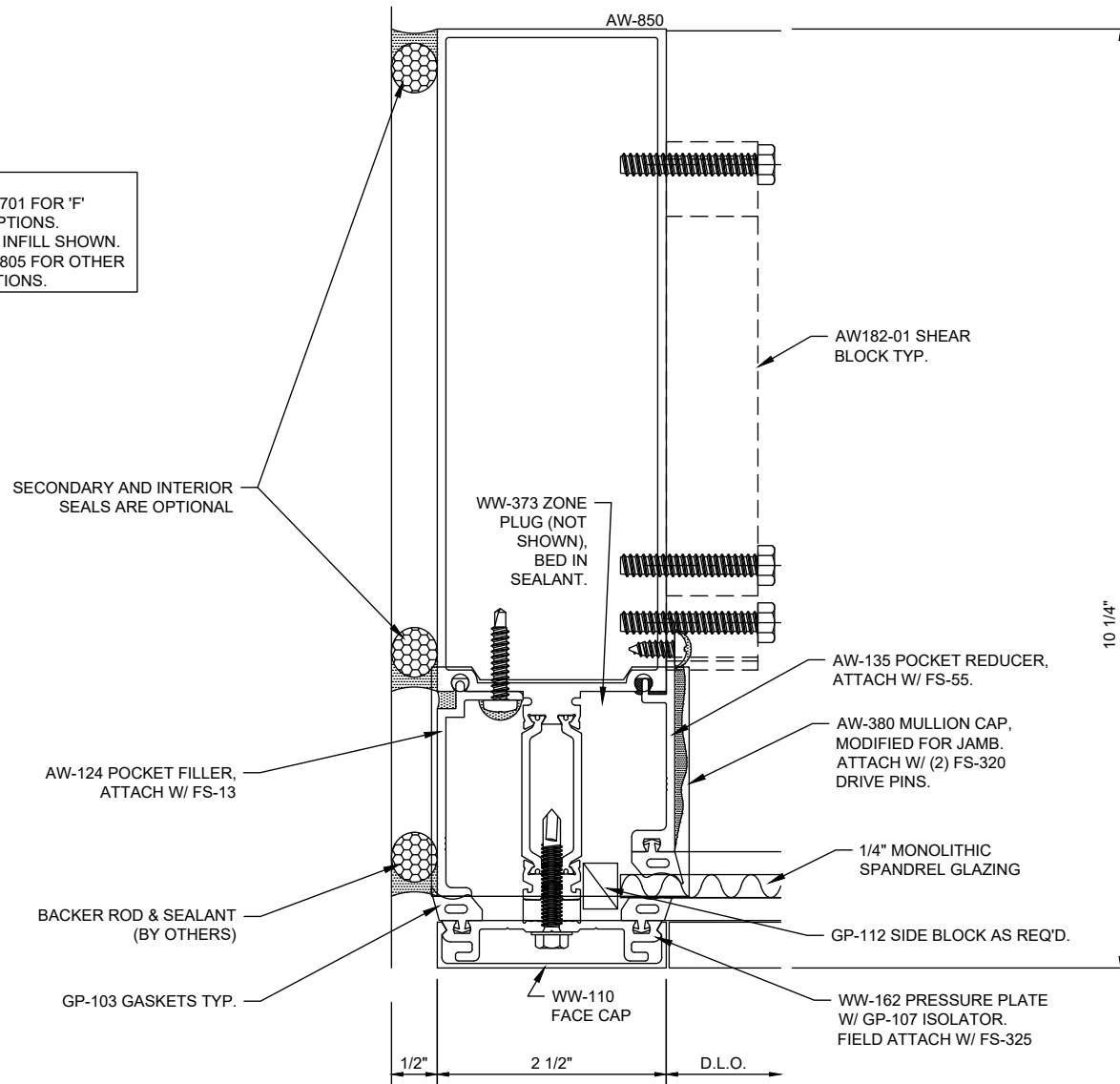


Reliance®-HTC Jamb - V9831



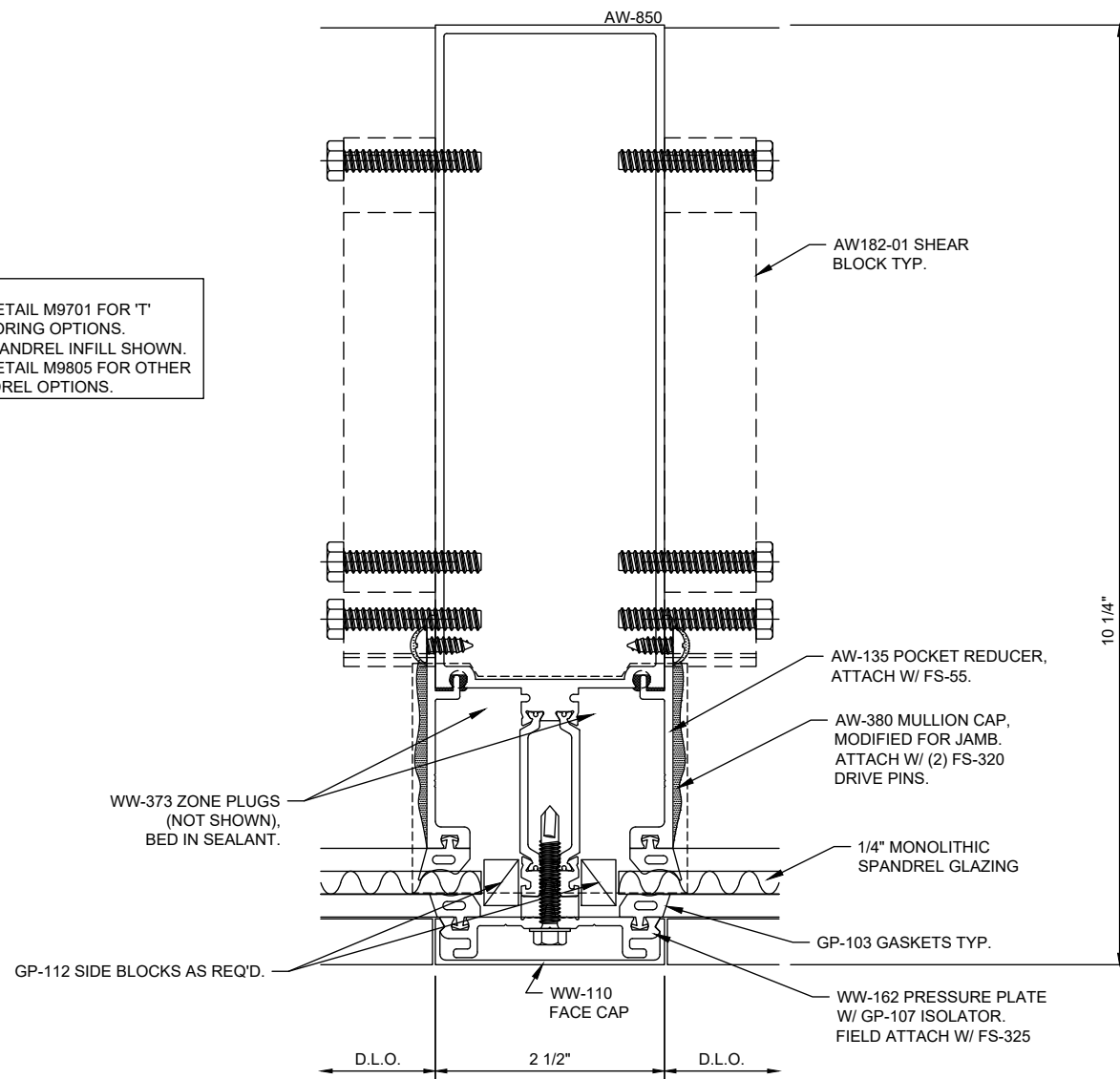
Reliance®-HTC Typical Vertical - V9832

- NOTES:
1. SEE DETAIL M9701 FOR 'F' ANCHORING OPTIONS.
 2. 1/4" SPANDREL INFILL SHOWN. SEE DETAIL M9805 FOR OTHER SPANDREL OPTIONS.



Reliance®-HTC Jamb at 1/4" Spandrel Glazing - V9833

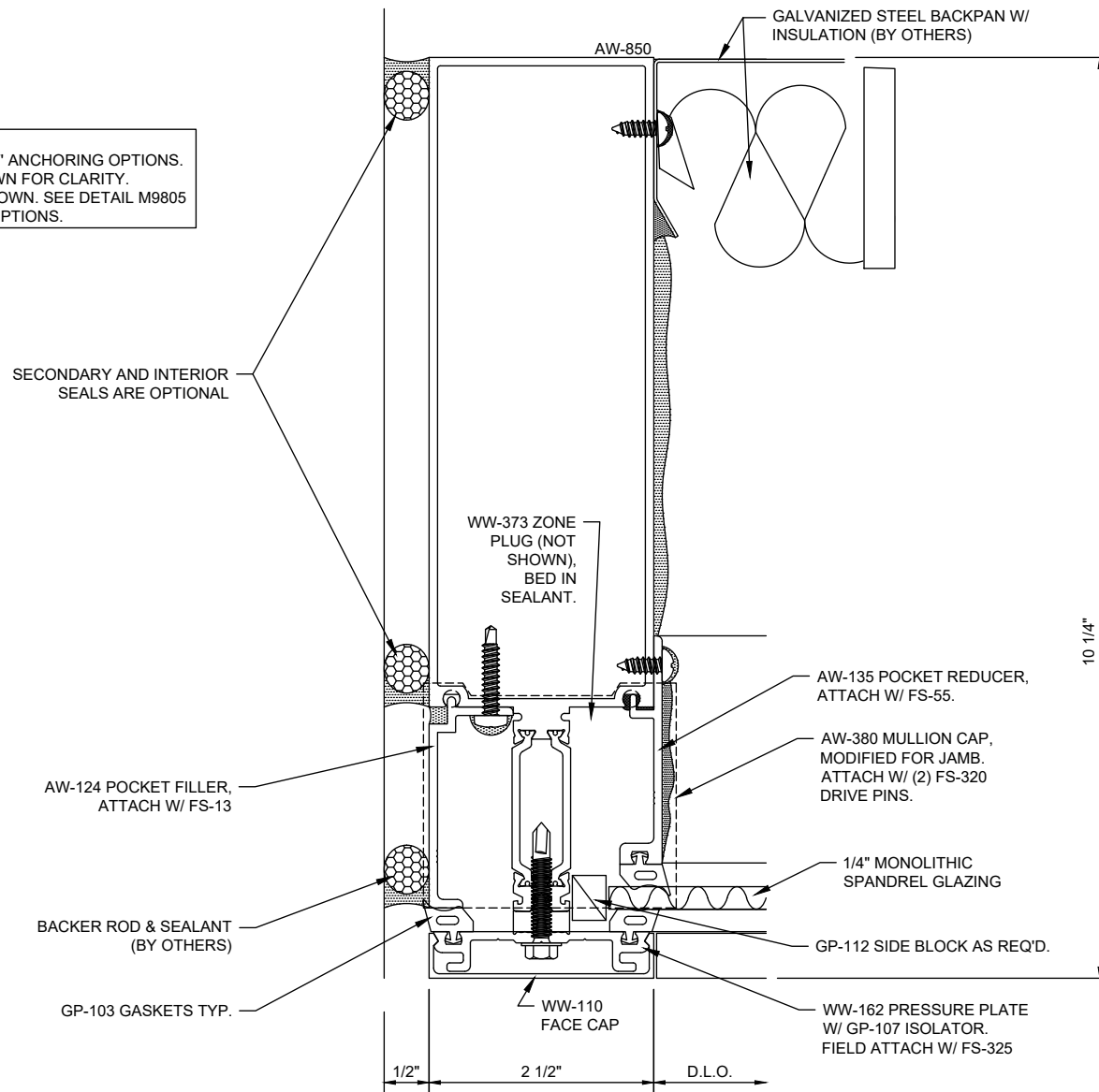
- NOTES:
1. SEE DETAIL M9701 FOR "T" ANCHORING OPTIONS.
 2. 1/4" SPANDREL INFILL SHOWN. SEE DETAIL M9805 FOR OTHER SPANDREL OPTIONS.



Reliance®-HTC Vertical at 1/4" Spandrel Glazing - V9834

NOTES:

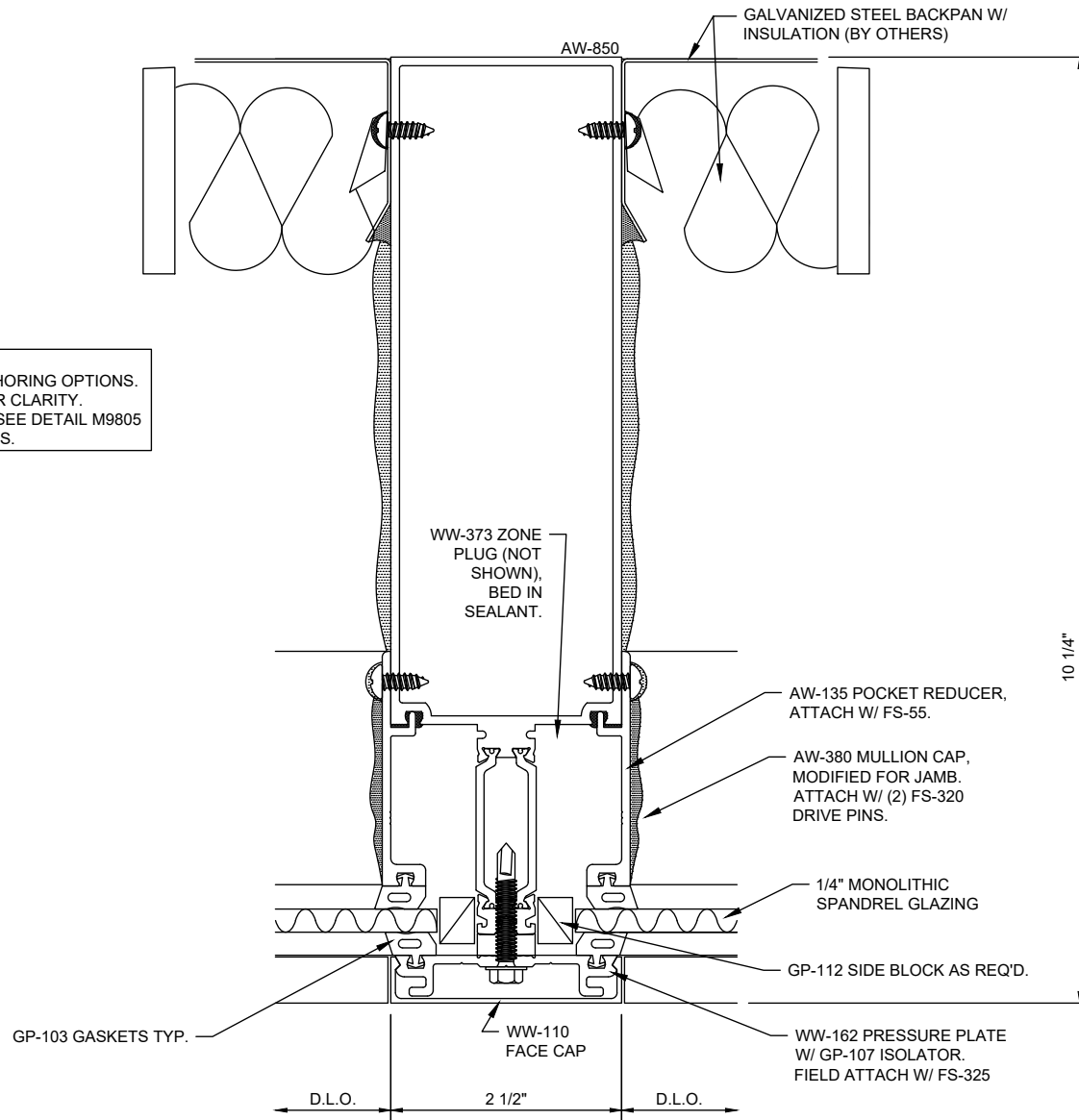
1. SEE DETAIL M9701 FOR 'F' ANCHORING OPTIONS.
2. SHEAR BLOCK NOT SHOWN FOR CLARITY.
3. 1/4" SPANDREL INFILL SHOWN. SEE DETAIL M9805 FOR OTHER SPANDREL OPTIONS.



Reliance®-HTC Jamb at 1/4" Spandrel Infill w/ Backpan - V9835

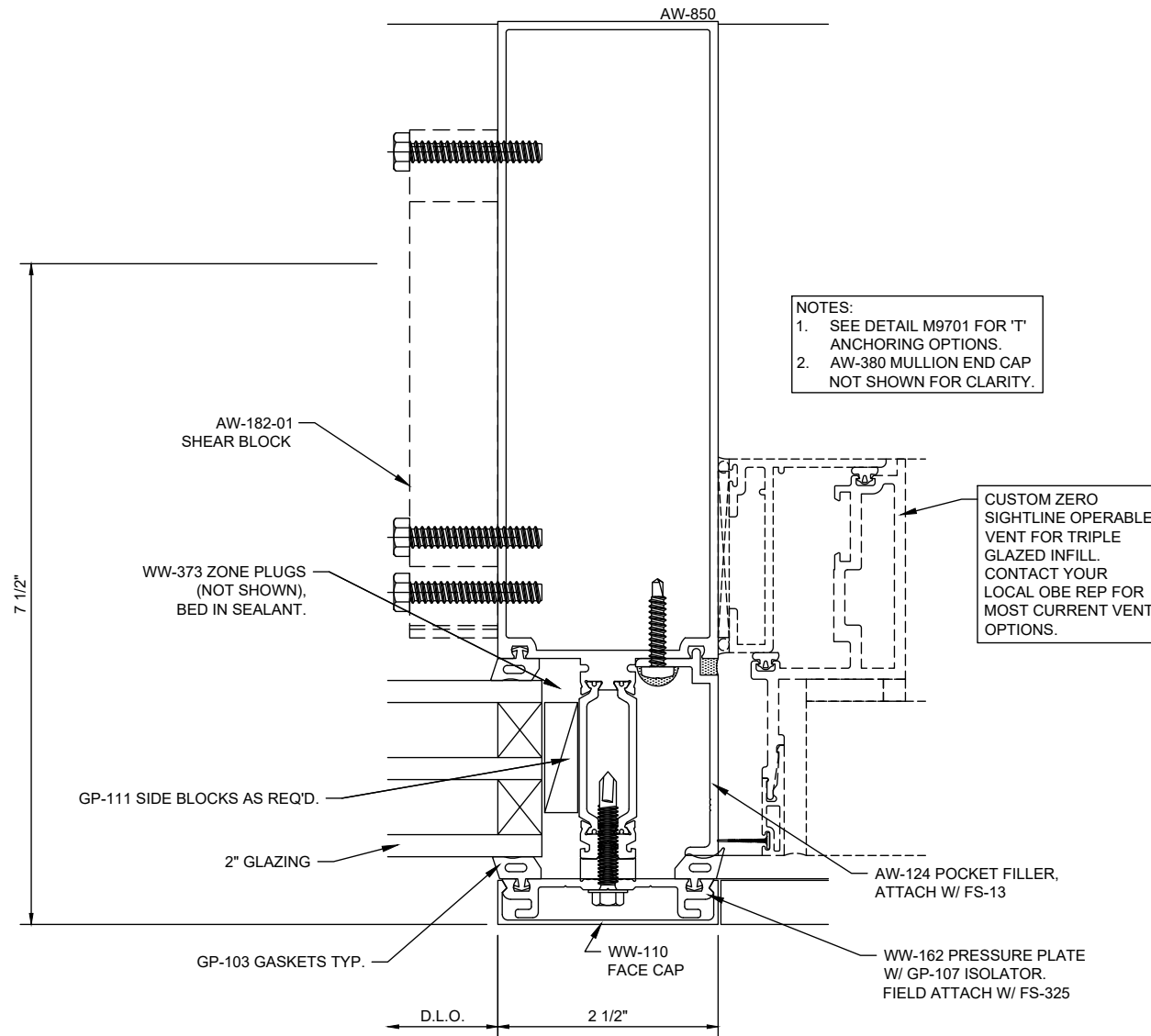
NOTES:

1. SEE DETAIL M9701 FOR 'T' ANCHORING OPTIONS.
2. SHEAR BLOCK NOT SHOWN FOR CLARITY.
3. 1/4" SPANDREL INFILL SHOWN. SEE DETAIL M9805 FOR OTHER SPANDREL OPTIONS.



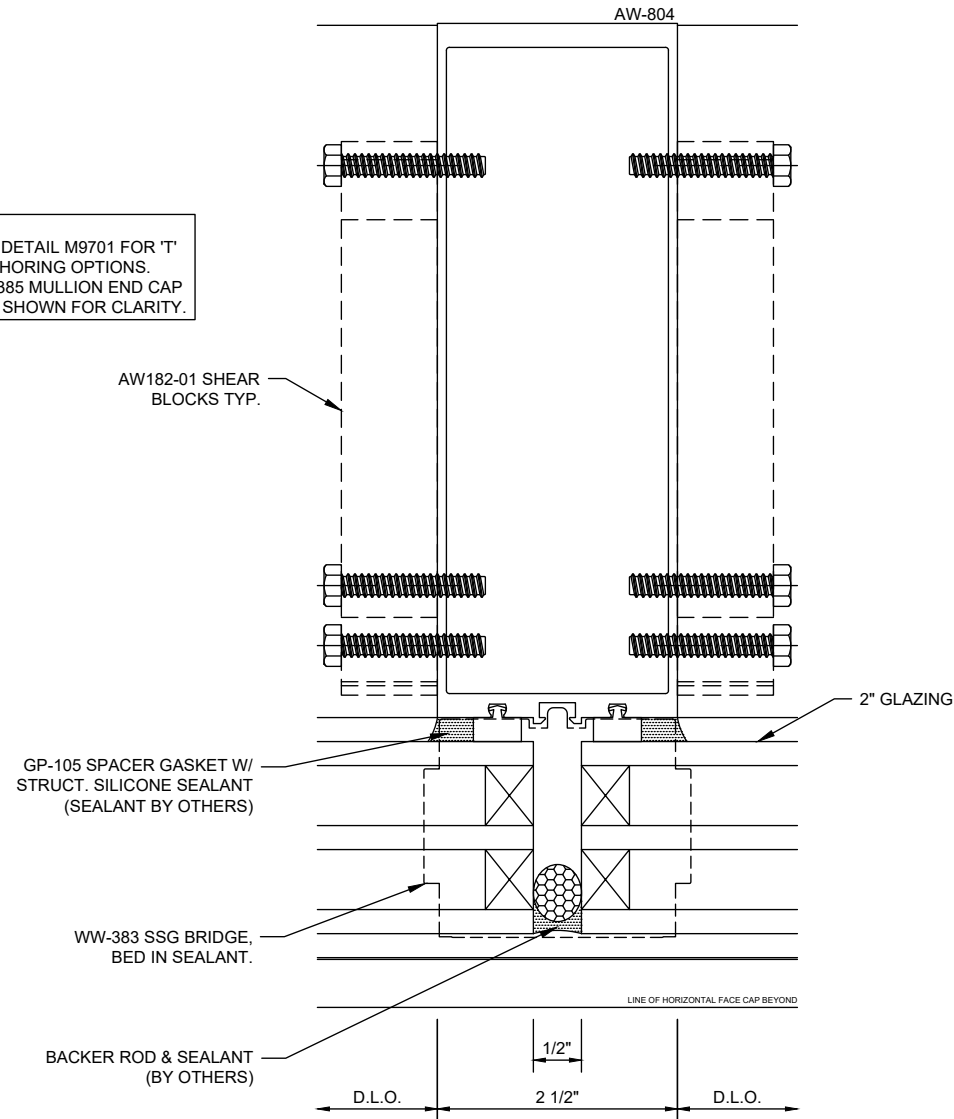
Reliance®-HTC

Vertical at 1/4" Spandrel Infill w/ Backpan - V9836



Reliance®-HTC Vertical at Operable Window - V9837

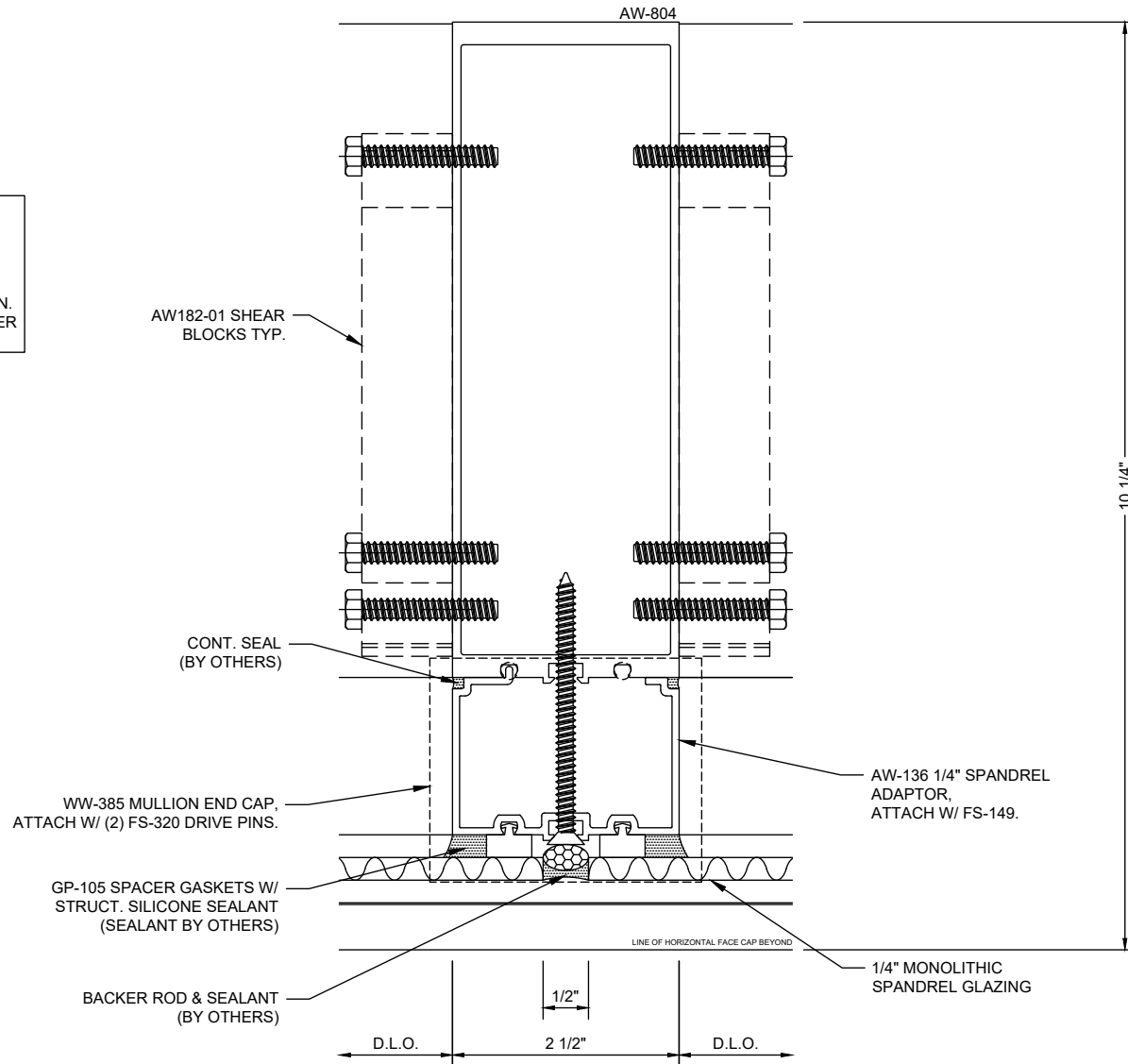
- NOTES:
1. SEE DETAIL M9701 FOR 'T' ANCHORING OPTIONS.
 2. AW-385 MULLION END CAP NOT SHOWN FOR CLARITY.



Reliance®-HTC SSG Vertical - V9846

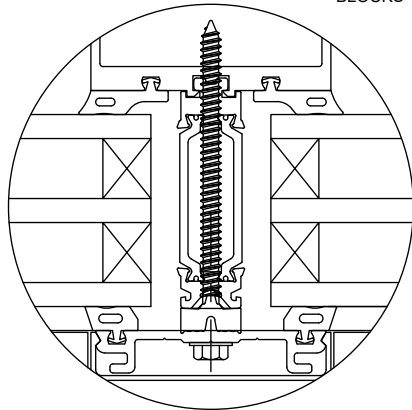
NOTES:

1. SEE DETAIL M9701 FOR 'T' ANCHORING OPTIONS.
2. WW-383 SSG BRIDGE NOT SHOWN FOR CLARITY.
3. 1/4" SPANDREL INFILL SHOWN. SEE DETAIL M9805 FOR OTHER SPANDREL OPTIONS.



Reliance®-HTC SSG Vertical at 1/4" Spandrel Glazing - V9848

- NOTES:
1. SEE DETAIL M9701 FOR 'T' ANCHORING OPTIONS.
 2. WW-383 SSG BRIDGE NOT SHOWN FOR CLARITY.
 3. GLASS BITE IS 5/8" FOR WET GLAZED OPENINGS AND 1/2" FOR DRY GLAZED.



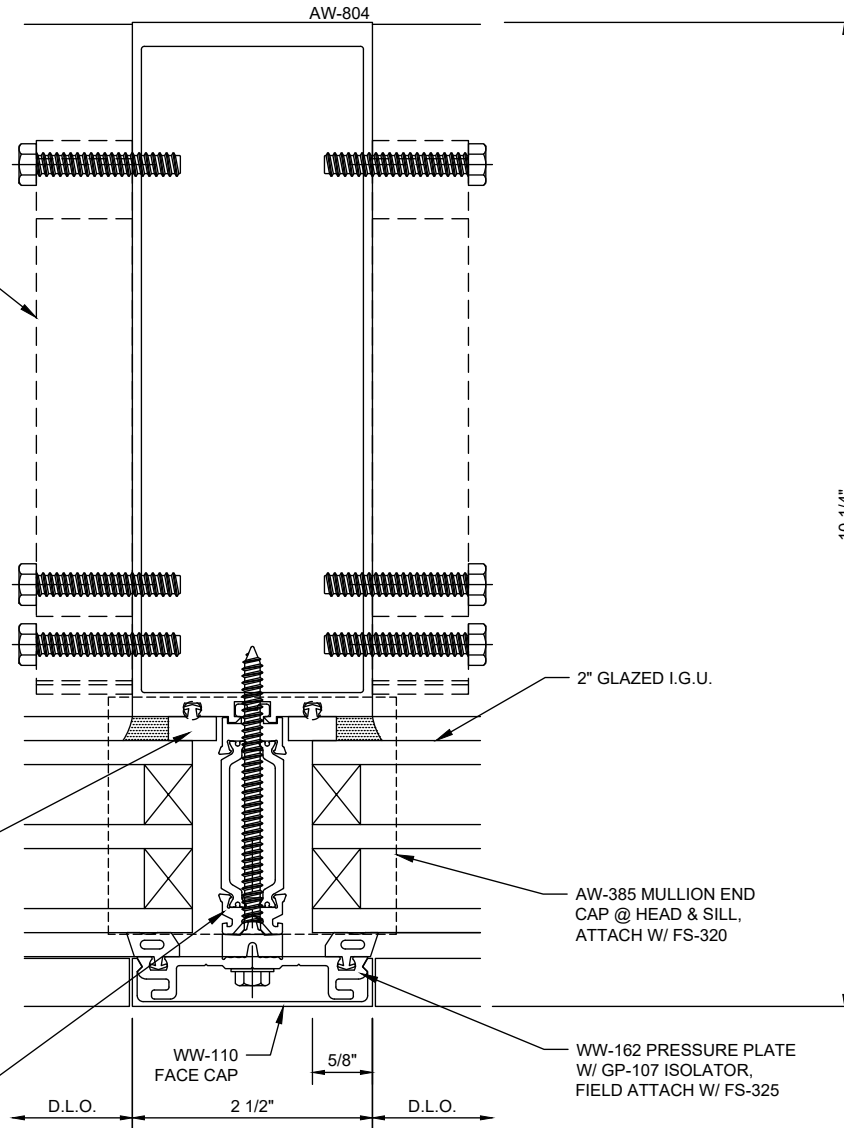
DRY GLAZE OPTION

GP-122 INTERIOR GASKETS
GP-103 EXTERIOR GASKETS
NOTE 1/2" GLASS BITE

GP-105 SPACER GASKET W/
STRUCT. SILICONE SEALANT
(SEALANT BY OTHERS)

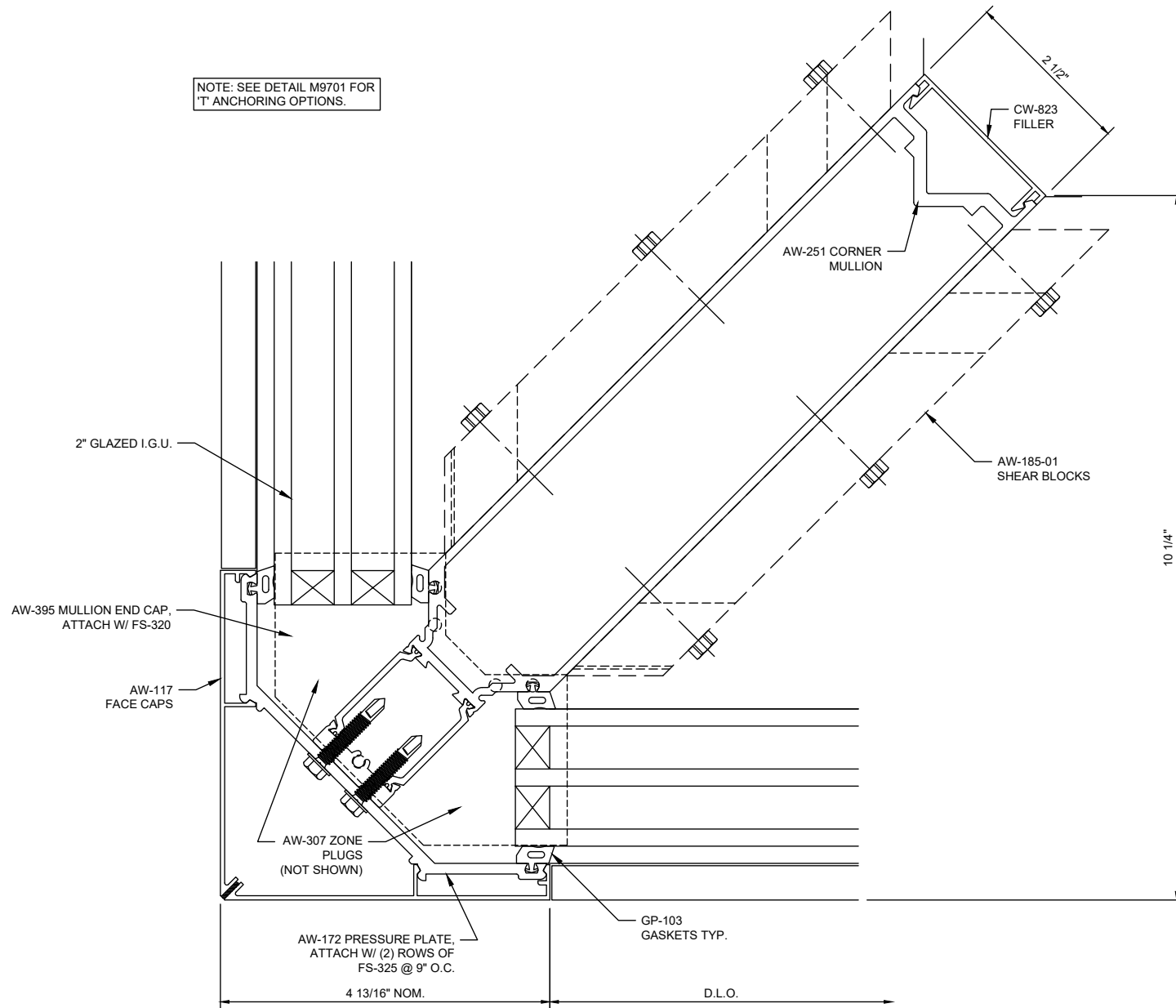
AW-126 TONGUE ADAPTOR,
ATTACH W/ FS-149. ENSURE
SCREWS ARE STAGGERED WITH
PRESSURE PLATE FASTENERS.

AW182-01 SHEAR
BLOCKS TYP.



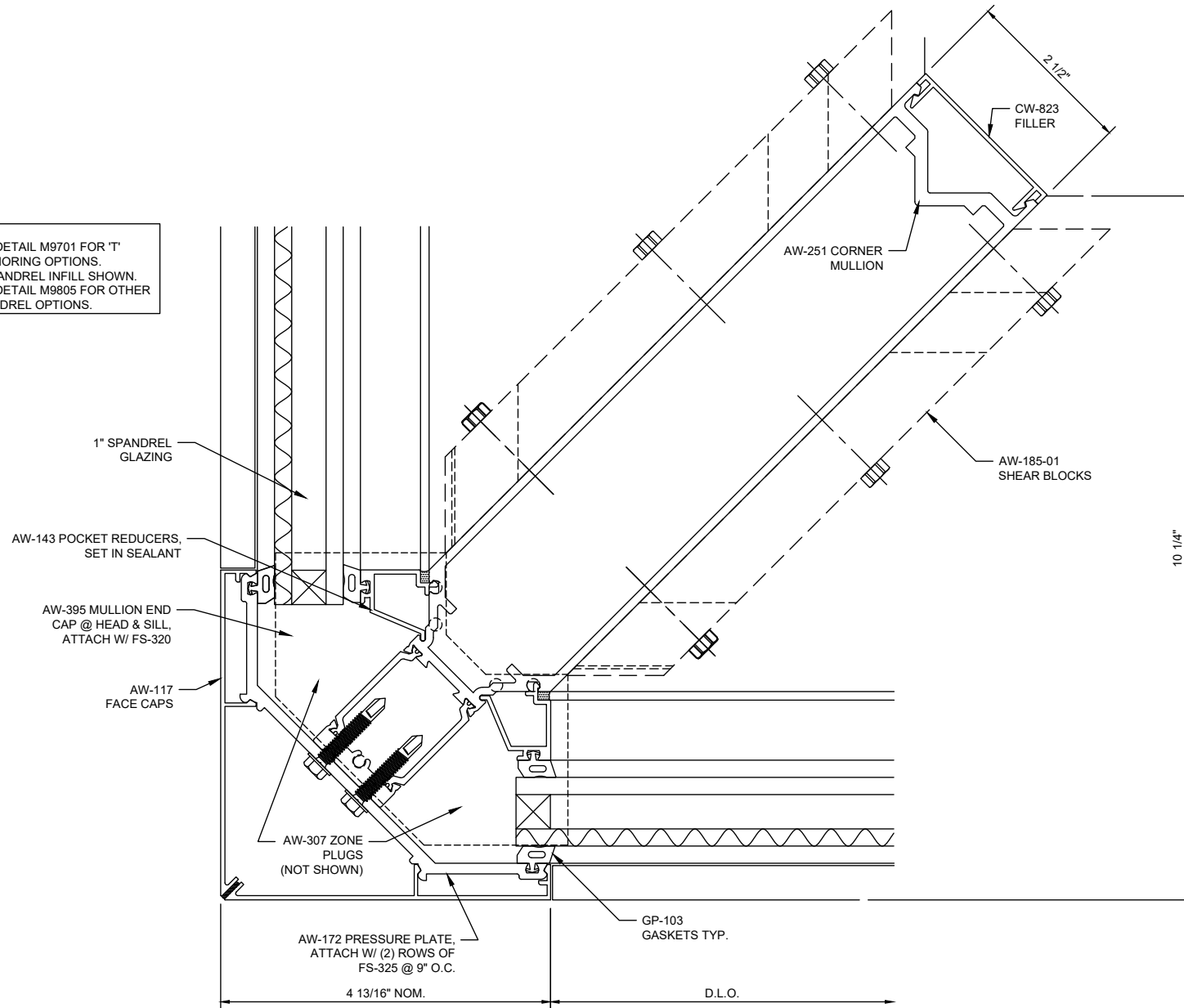
Reliance®-HTC

Vertical at SSG to Captured Transition - V9849



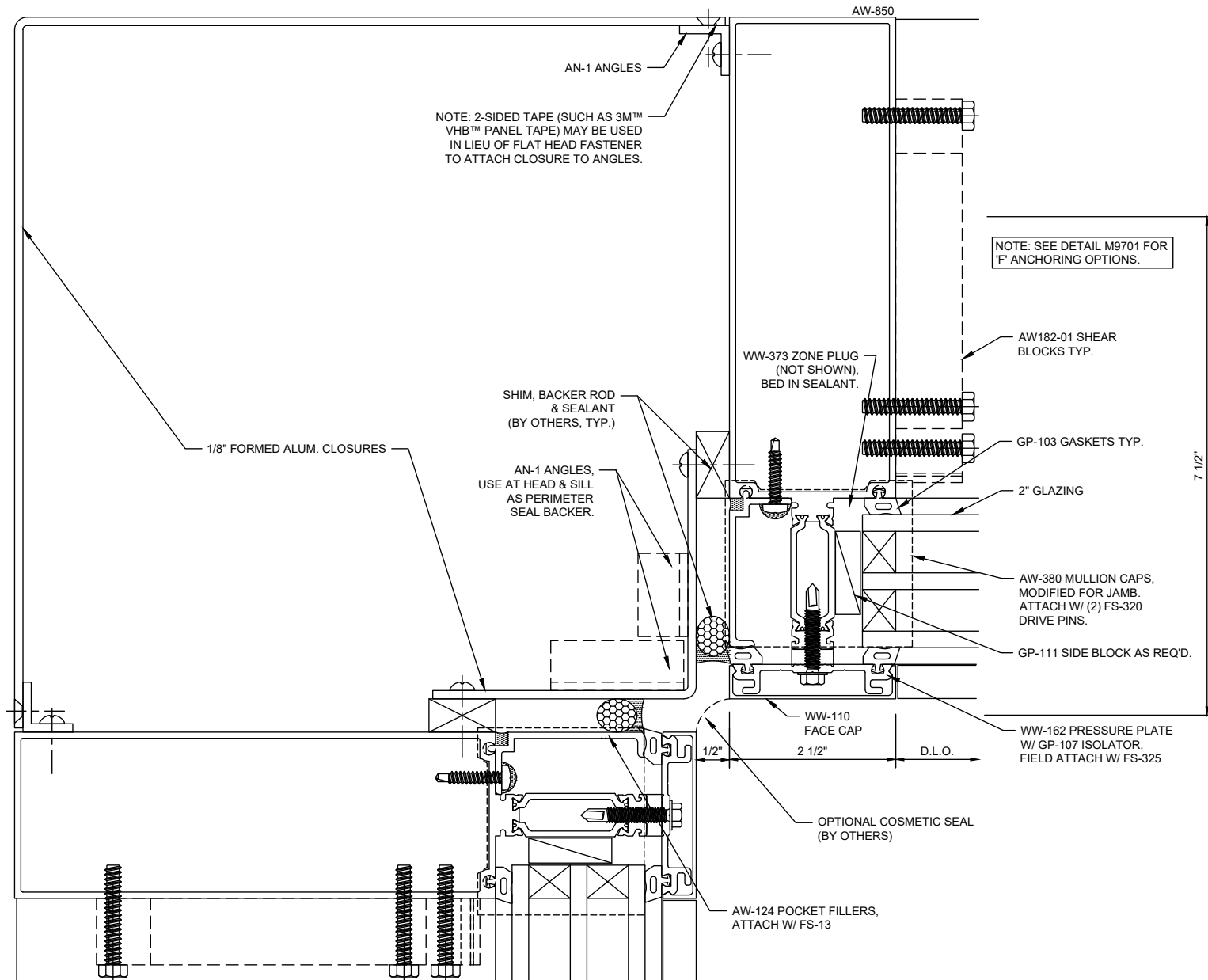
Reliance®-HTC 90° Outside Corner - V9839

- NOTES:
1. SEE DETAIL M9701 FOR "T" ANCHORING OPTIONS.
 2. 1" SPANDREL INFILL SHOWN. SEE DETAIL M9805 FOR OTHER SPANDREL OPTIONS.

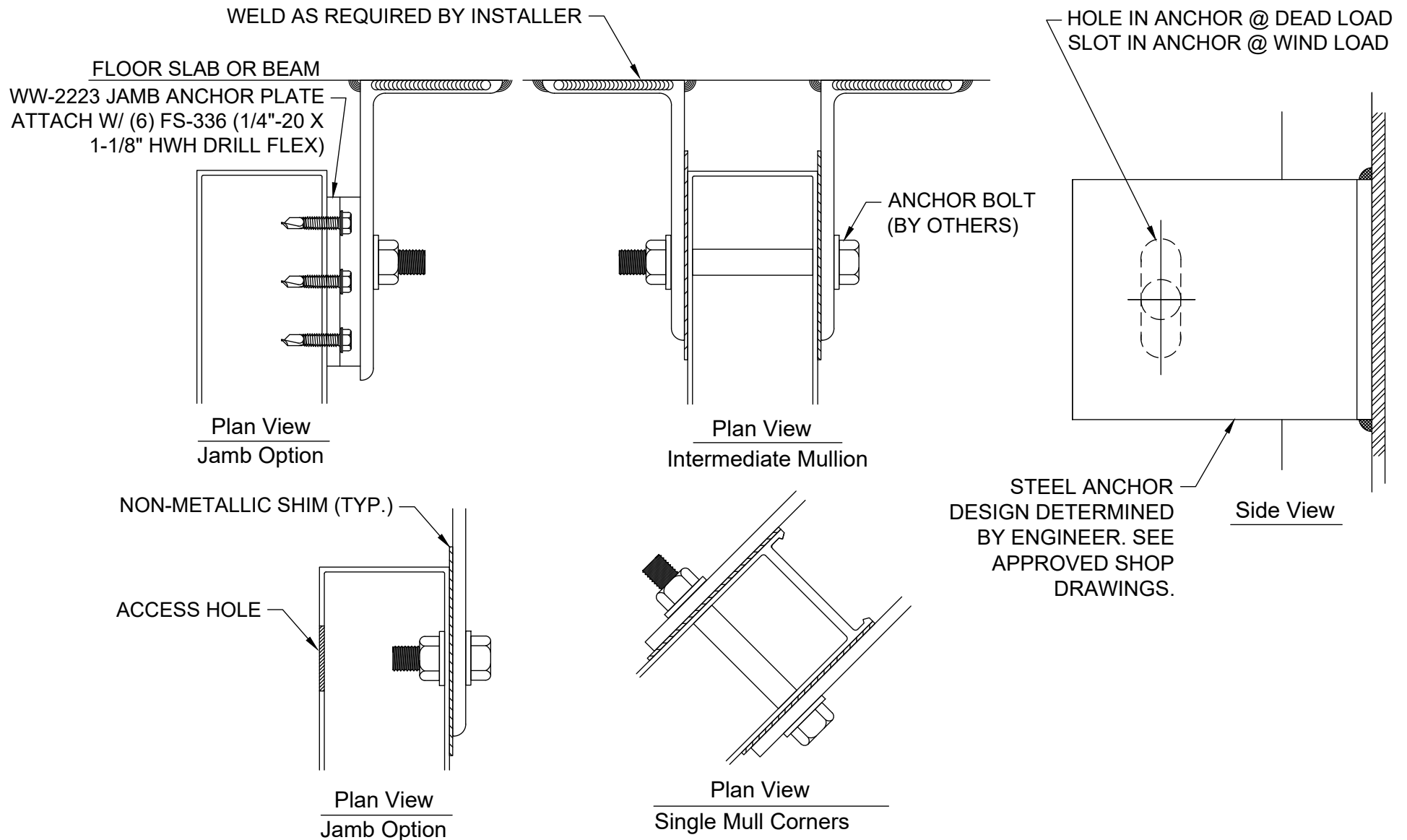


Reliance®-HTC

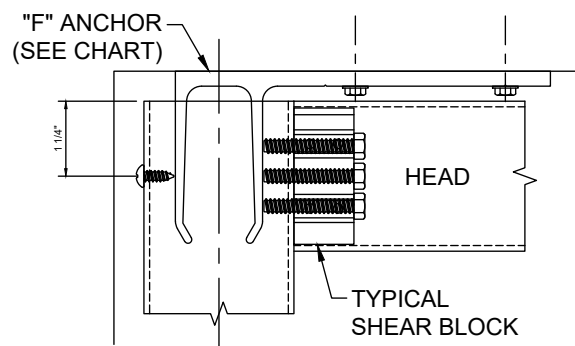
90° Outside Corner at 1" Spandrel Infill - V9840



Reliance®-HTC 90° Inside Corner - V9842



Standard Curtain Wall Steel Anchoring - M0042

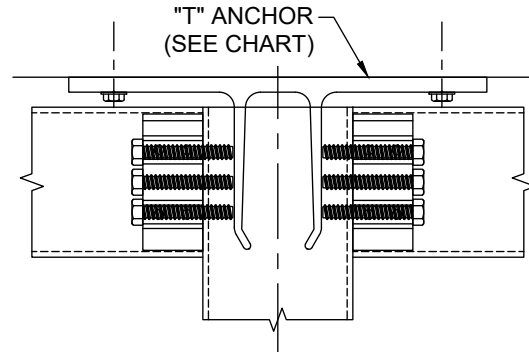


JAMB

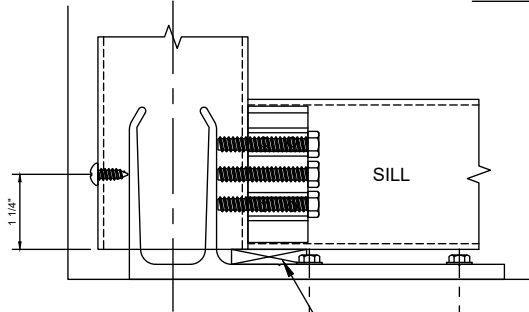
HEAD

TYPICAL
SHEAR BLOCK

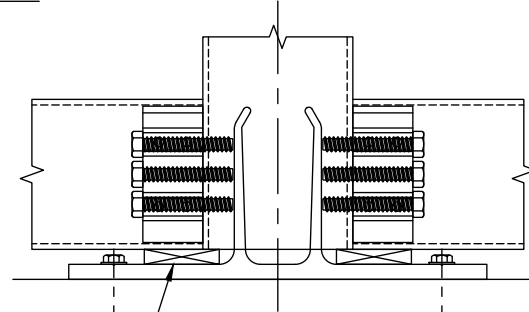
FRONT VIEW



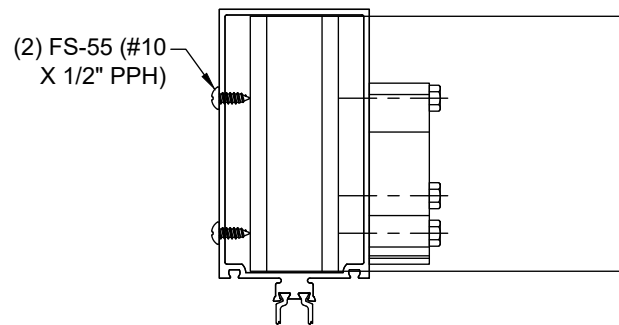
MULLION



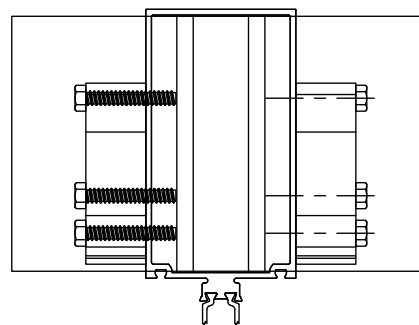
SHIM UNDERNEATH MULLION
(BY OTHERS)



ANCHOR BOLT
(SEE NOTE)



(2) FS-55 (#10
X 1/2" PPH)



PLAN VIEW

"F" ANCHOR CHART

PART NO.	MULLION
WW-103-11	AW-500 / AW-550
WW-103-12	AW-504
WW-103-13	AW-800 / AW-850
WW-103-14	AW-804

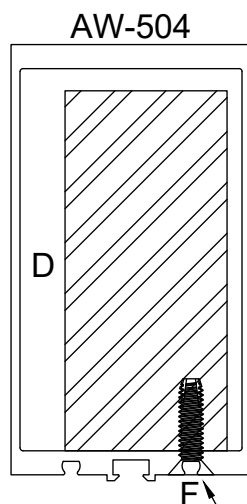
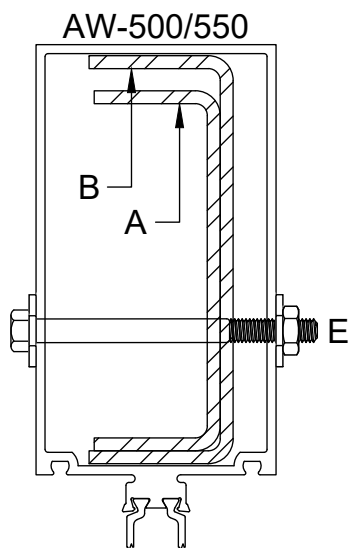
"T" ANCHOR CHART

PART NO.	MULLION
WW-102-16	AW-500 / AW-550
WW-102-17	AW-504
WW-102-18	AW-240 / AW-241 (90°, SHALLOW)
WW-102-19	AW-250 / AW-251 (90°, DEEP)
WW-102-20	AW-800 / AW-850
WW-102-21	AW-804

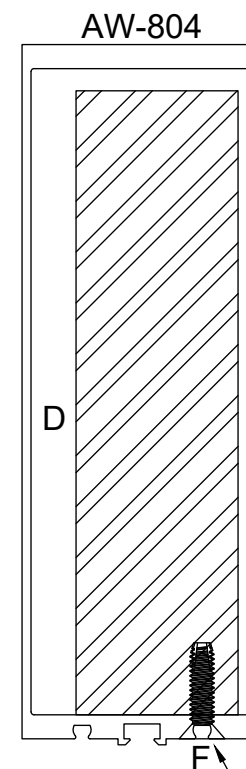
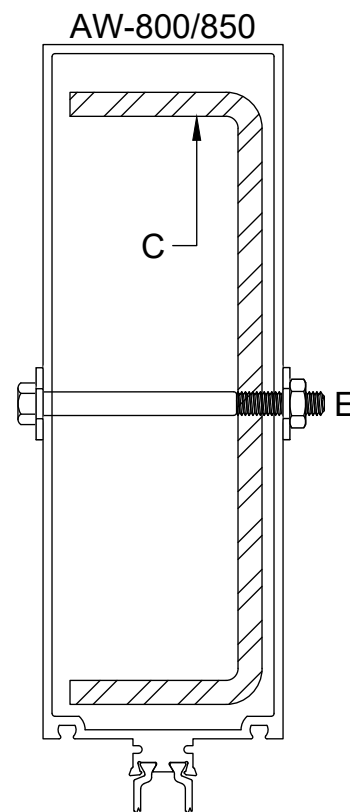
NOTE:

1. REFERENCE INSTALLATION MANUAL FOR MORE INFORMATION.
2. ANCHOR BOLT SIZE AND LAYOUT DETERMINED PER PROJECT VIA STRUCTURAL REVIEW. REFERENCE APPROVED SHOP DRAWINGS.

Reliance™-HTC 'F' and 'T' Mullion Anchoring - M9701



DRILL AND COUNTERSINK FOR
1/4" FLAT HEAD FASTENER AND
ATTACH W/ FS-259, SPACING
PER STRUCTURAL REVIEW.
REMOVE SPACER GASKET DART
AT FASTENER LOCATIONS.



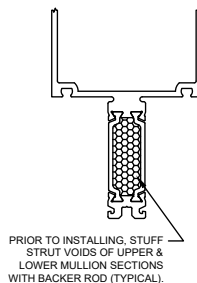
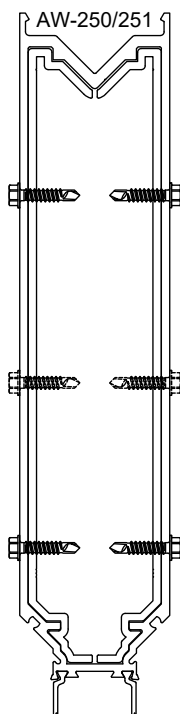
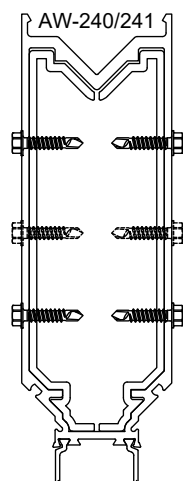
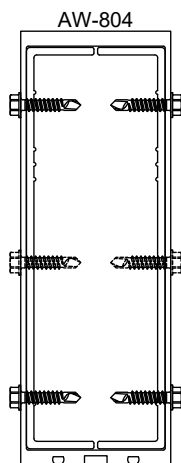
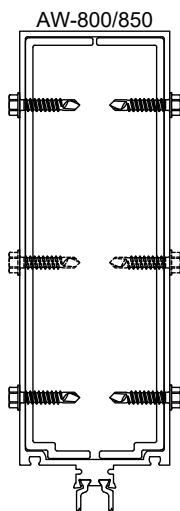
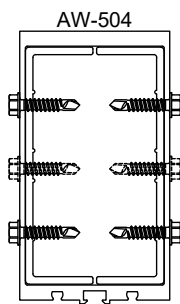
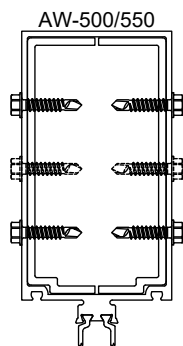
DRILL AND COUNTERSINK FOR
1/4" FLAT HEAD FASTENER AND
ATTACH W/ FS-259, SPACING
PER STRUCTURAL REVIEW.
REMOVE SPACER GASKET DART
AT FASTENER LOCATIONS.

STEEL REINFORCING CHART	
A	PP-17 (1 5/16" X 3 3/4" 10 GA.)
B	PP-16 (1 1/2" X 4 1/4" 10 GA.)
C	RS-36 (2" X 6-3/8" X 1/4" THICK)
D	STEEL BAR OPTION (BY OTHERS)
E	1/4"-20 X 3" HEX HEAD BOLT 1/4"-20 HEX NUT & WASHERS
F	FS-259 (1/4"-20 X 1" PFH THREAD CUTTING SCREW)

NOTES:

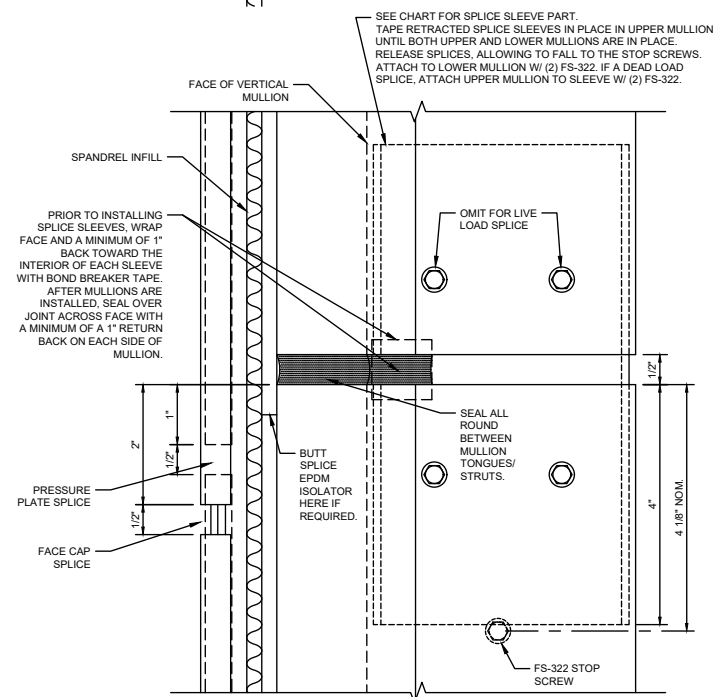
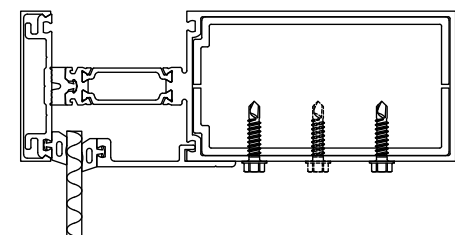
1. STEEL REQUIREMENTS AND ATTACHMENT LAYOUT
DETERMINED PER PROJECT VIA STRUCTURAL REVIEW.
REFERENCE APPROVED SHOP DRAWINGS.

Reliance™-HTC Steel Reinforcement - M9702



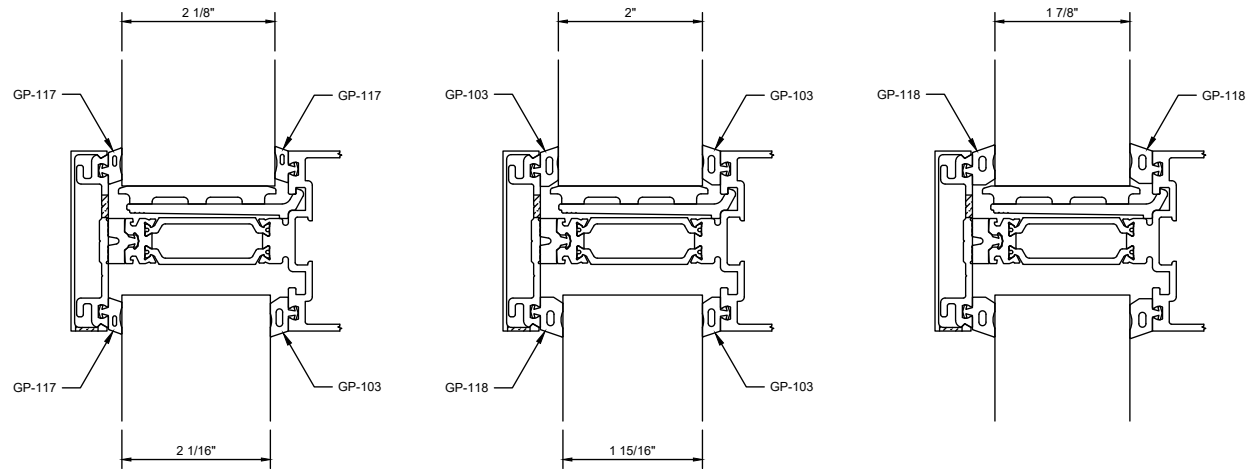
MULLION SPLICE CHART	
MULLION	SPLICE PART
AW-500 AW-550	AW-194-01
AW-504	AW-195-01
AW-800 AW-850	AW196-01
AW-804	AW-197-01
AW-240 AW-241	AW-198-01
AW-250 AW-251	AW-200-01

- NOTES:
1. FS-322 (#12-14 X 1" HWH DRILLING SCREW) IS TYPICAL FOR ATTACHMENT OF SPLICE SLEEVES.
 2. FS-322 STOP SCREWS SHOWN DASHED.
 3. DETAIL DRAWN FOR A TOTAL OF 1/2" MOVEMENT (PLUS/MINUS 1/4").
 4. SPLICE DETAIL SHOWS THE 1-3/4" GLAZED SHALLOW SYSTEM W/ 1/4" SPANDREL INFILL. OTHER SYSTEM CONFIGURATIONS ARE SIMILAR. SEE DETAIL M970X FOR INFILL OPTIONS AND SPANDREL ADAPTORS.
 5. CAPTURED VERTICAL SPLICE PROCEDURE IS SHOWN; REFERENCE INSTALLATION MANUAL FOR SSG VERTICAL SPLICE PROCEDURE.

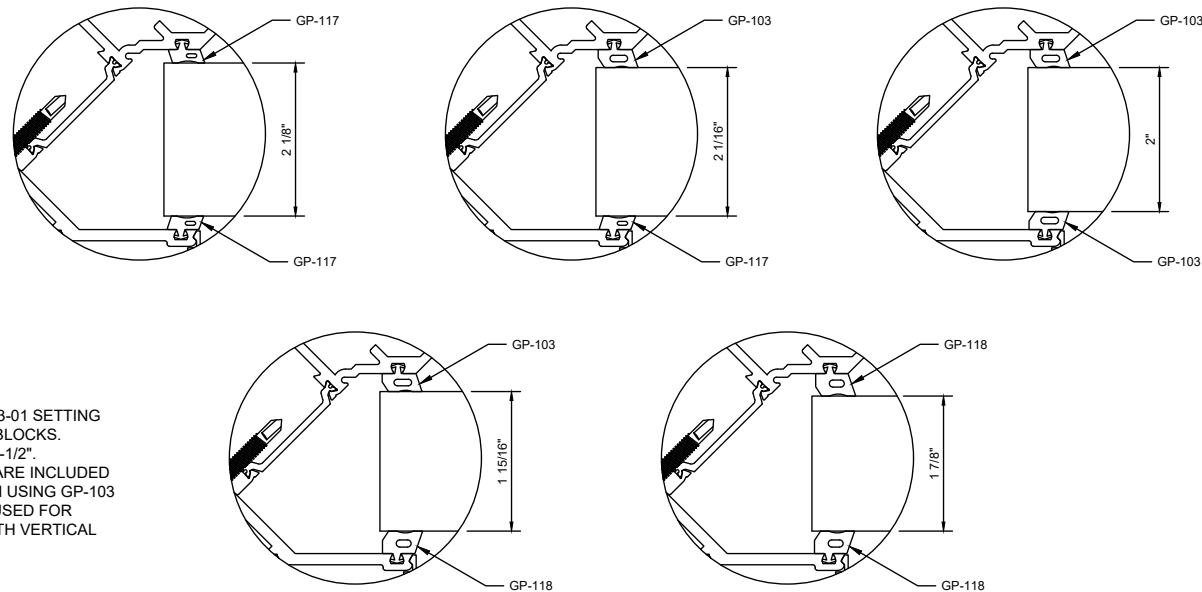


PROFILE VIEW

Reliance™-HTC Mullion Splicing - M9703



HORIZONTAL & VERTICAL VISION GLAZING OPTIONS

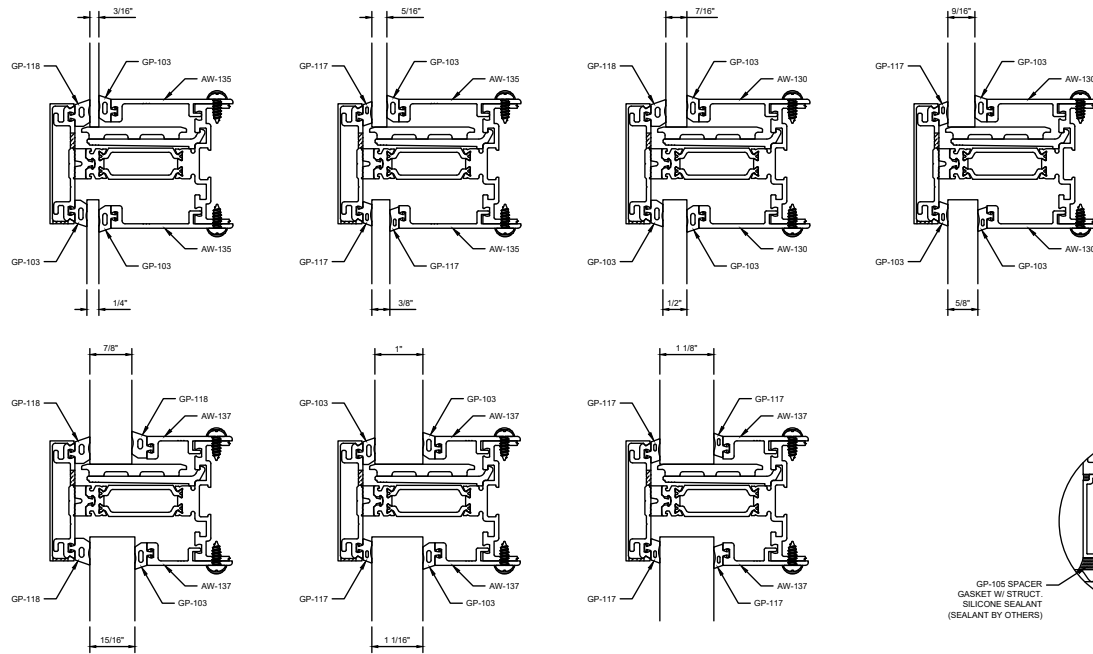


NOTES:

1. ALL INFILL OPTIONS USE AW-123-01 SETTING CHAIRS AND GP-1003 SETTING BLOCKS.
2. GLASS POCKET DIMENSION IS 2-1/2".
3. NOTE THAT IF SSG VERTICALS ARE INCLUDED IN PROJECT, A GLAZING OPTION USING GP-103 ON THE INTERIOR SHOULD BE USED FOR PROPER GLASS ALIGNMENT WITH VERTICAL SSG SPACERS.

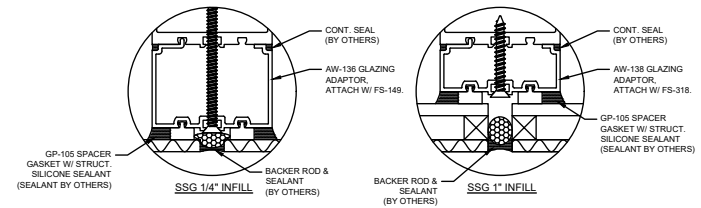
CORNER VISION GLAZING OPTIONS

Reliance™-HTC Vision Glazing Options - M9804

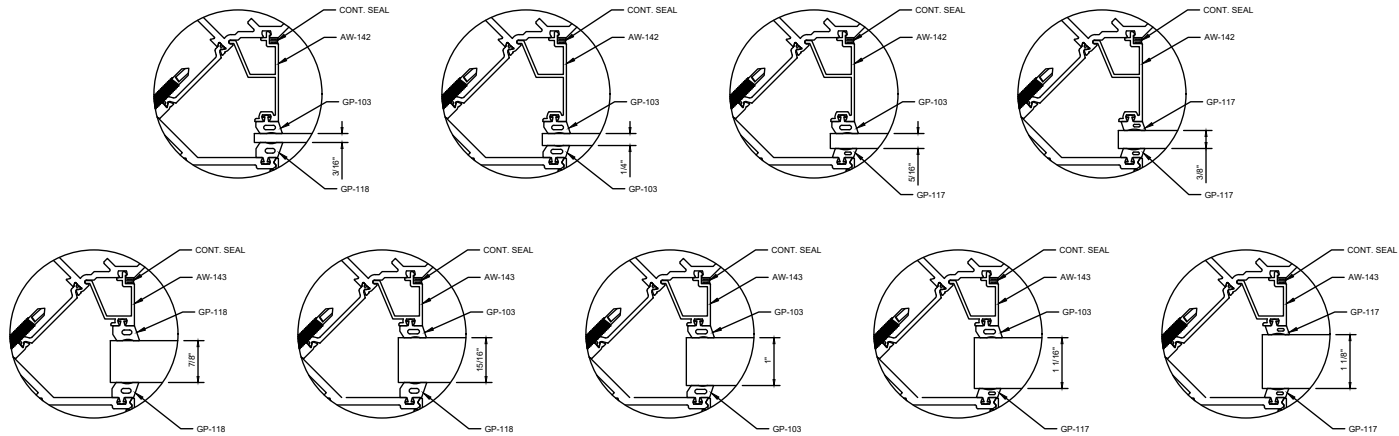


HORIZONTAL & VERTICAL SPANDREL GLAZING OPTIONS

- NOTES:
1. FS-55 IS TYPICAL FOR ATTACHMENT OF SCREW-APPLIED SPANDREL ADAPTORS UNLESS OTHERWISE NOTED. ATTACH @ 12" O.C. & CAP SEAL ALL FASTENERS.
 2. ALL INFILL OPTIONS USE AW-123-01 SETTING CHAIRS AND GP-1003 SETTING BLOCKS.
 3. ALL SPANDREL ADAPTORS ARE SET IN SEALANT.
 4. GLASS POCKET DIMENSION IS 1-1/2" WITH AW-137/AW-143, 1" WITH AW-130 AND 3/4" WITH AW-135/AW-142.
 5. ATTACH SSG SPANDREL ADAPTORS W/ FS-149 (#12 X 3" PFH SMS) @ 12" O.C. FOR 1/4" INFILL, OR FS-318 (#12 X 1-3/4" PFH SMS) @ 12" O.C. FOR 1" INFILL.
 6. NOTE THAT IF SSG VERTICALS ARE INCLUDED IN PROJECT, A GLAZING OPTION USING GP-103 ON THE INTERIOR SHOULD BE USED FOR PROPER GLASS ALIGNMENT WITH VERTICAL SSG SPACERS.



SSG SPANDREL GLAZING OPTIONS



CORNER SPANDREL GLAZING OPTIONS

Reliance™-HTC Spandrel Glazing Options - M9805