

# Oldcastle BuildingEnvelope®

1-866-Oldcastle (653-2278) - [www.obe.com](http://www.obe.com)

## ArmorDefend™ Plus Storefront - Wet Glazed 2-1/2" X 5" Center Set Storefront w/ 1-1/4" ArmorGarde™/ArmorGarde™ Plus Glazing

*(Drawing numbers---i.e., V0701---used as CAD detail reference only)*

### Elevation

#### **Horizontal Details**

H0701	Head Option 1
H0702	Head Option 2
H0704	Intermediate Horizontal
H0708	Sill Option 1
H0709	Sill Option 2

#### **Vertical Details**

V0701	Jamb Option 1
V0702	Jamb Option 2
V0704	Typical Vertical
V0706	Heavy Vertical
V0708	Expansion Vertical

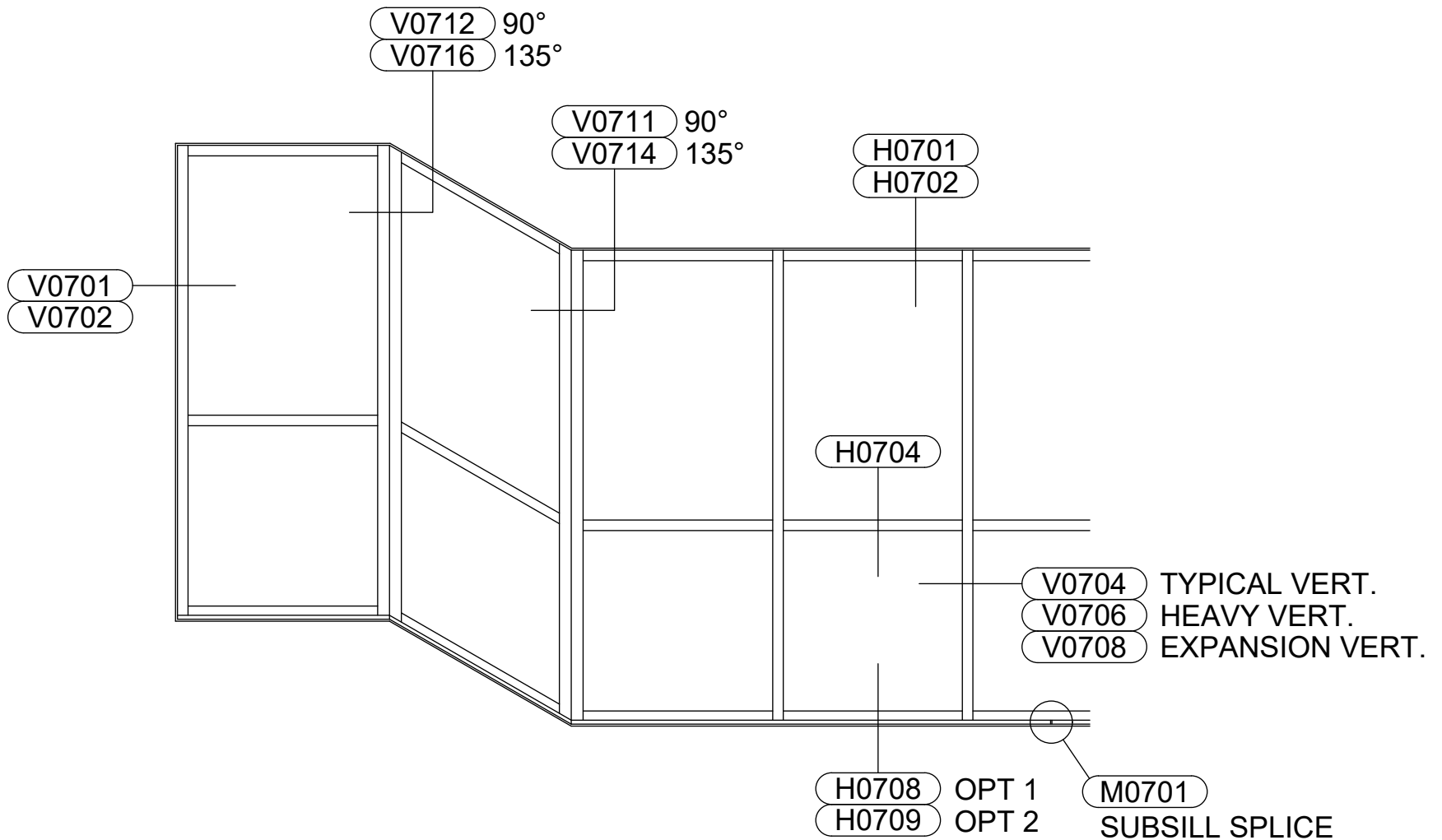
#### **Corner Details**

V0711	90° Outside Corner
V0712	90° Inside Corner
V0714	135° Outside Corner
V0716	135° Inside Corner

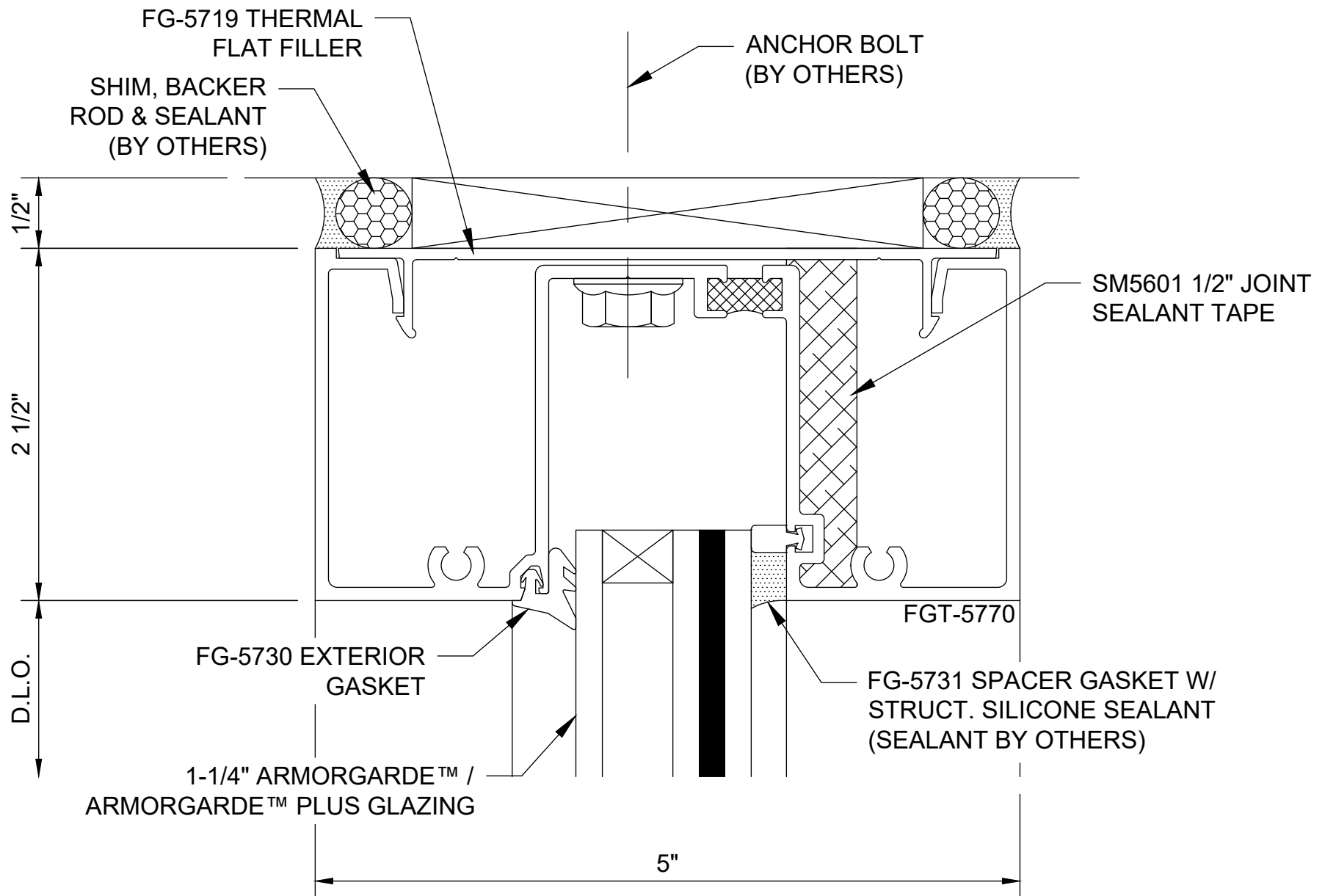
#### **Misc. Details**

M0701	Subsill Splicing & End Dam
-------	----------------------------

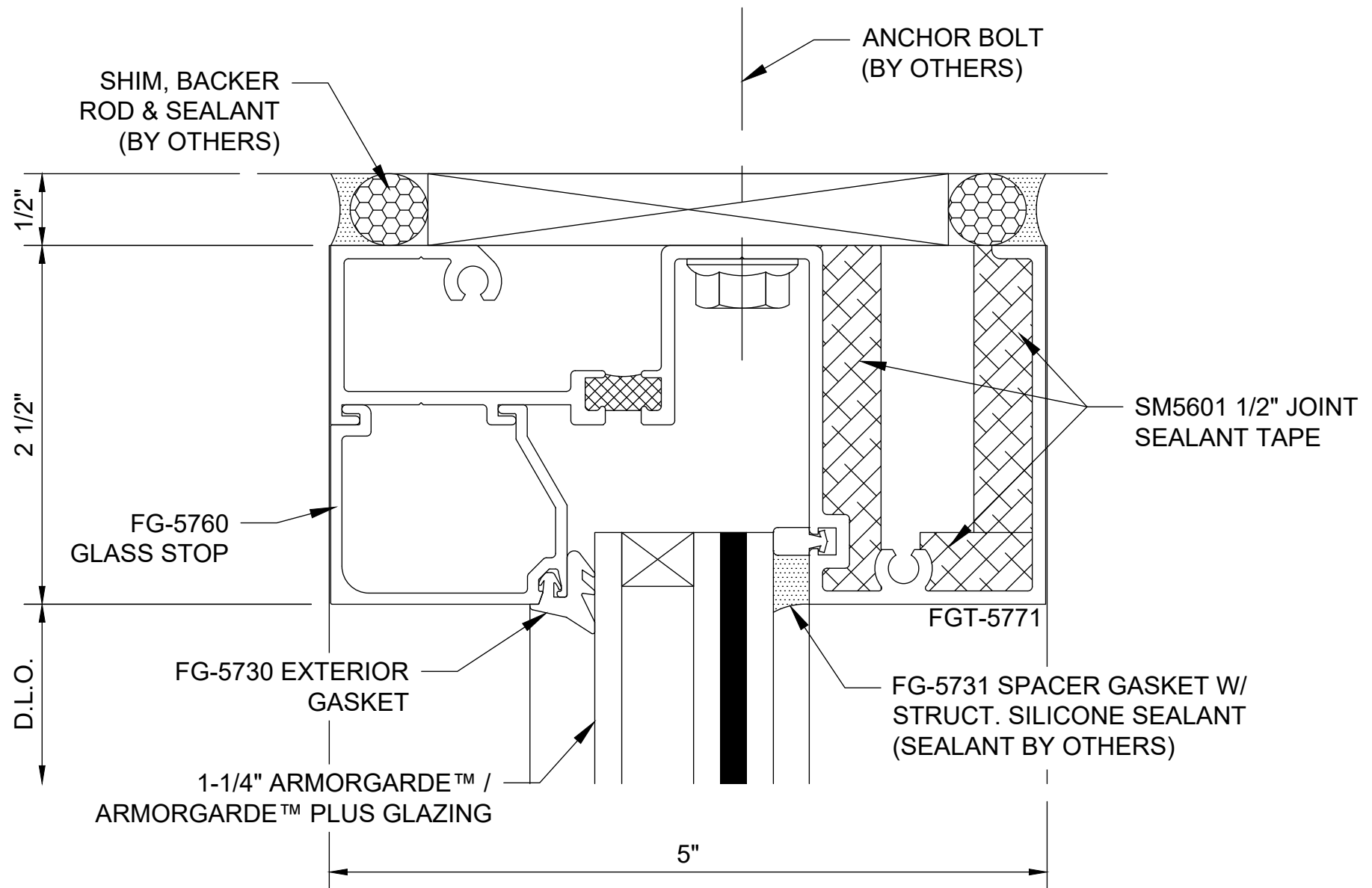
## Table of Contents



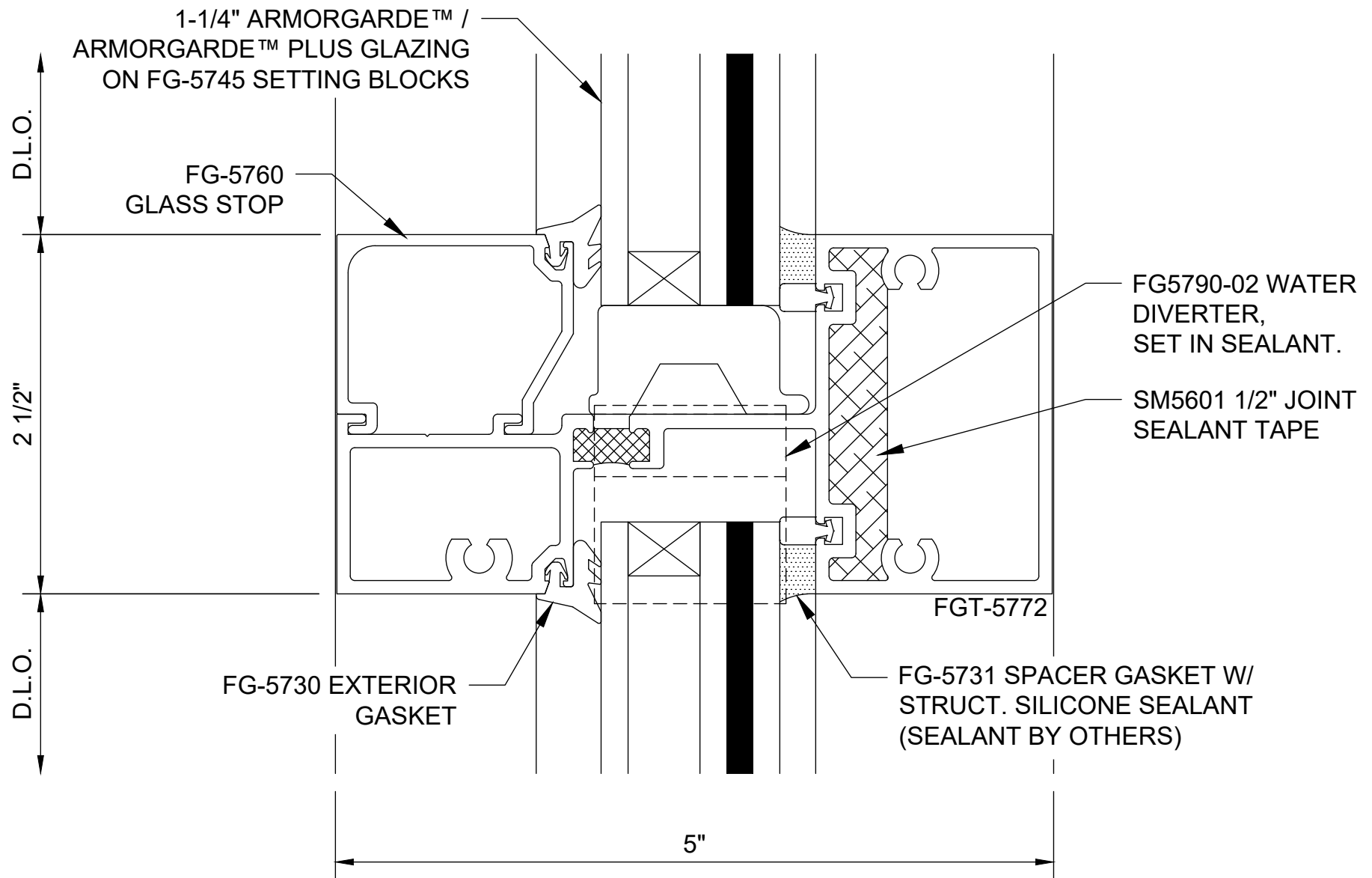
## ArmorDefend™ Plus Storefront - Wet Glazed Elevation / CAD Reference



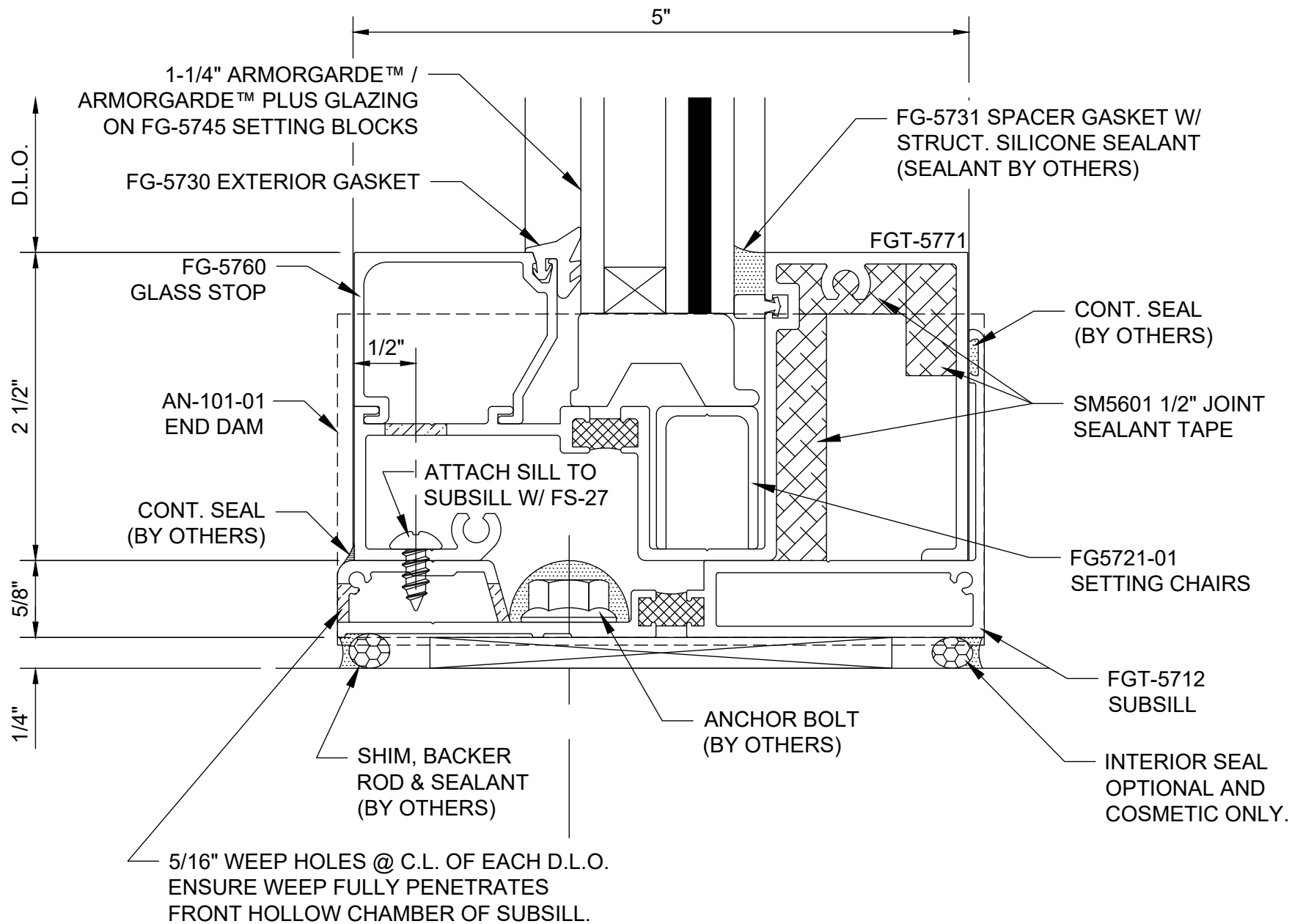
## ArmorDefend™ Plus Storefront - Wet Glazed Head Option 1 - H0701



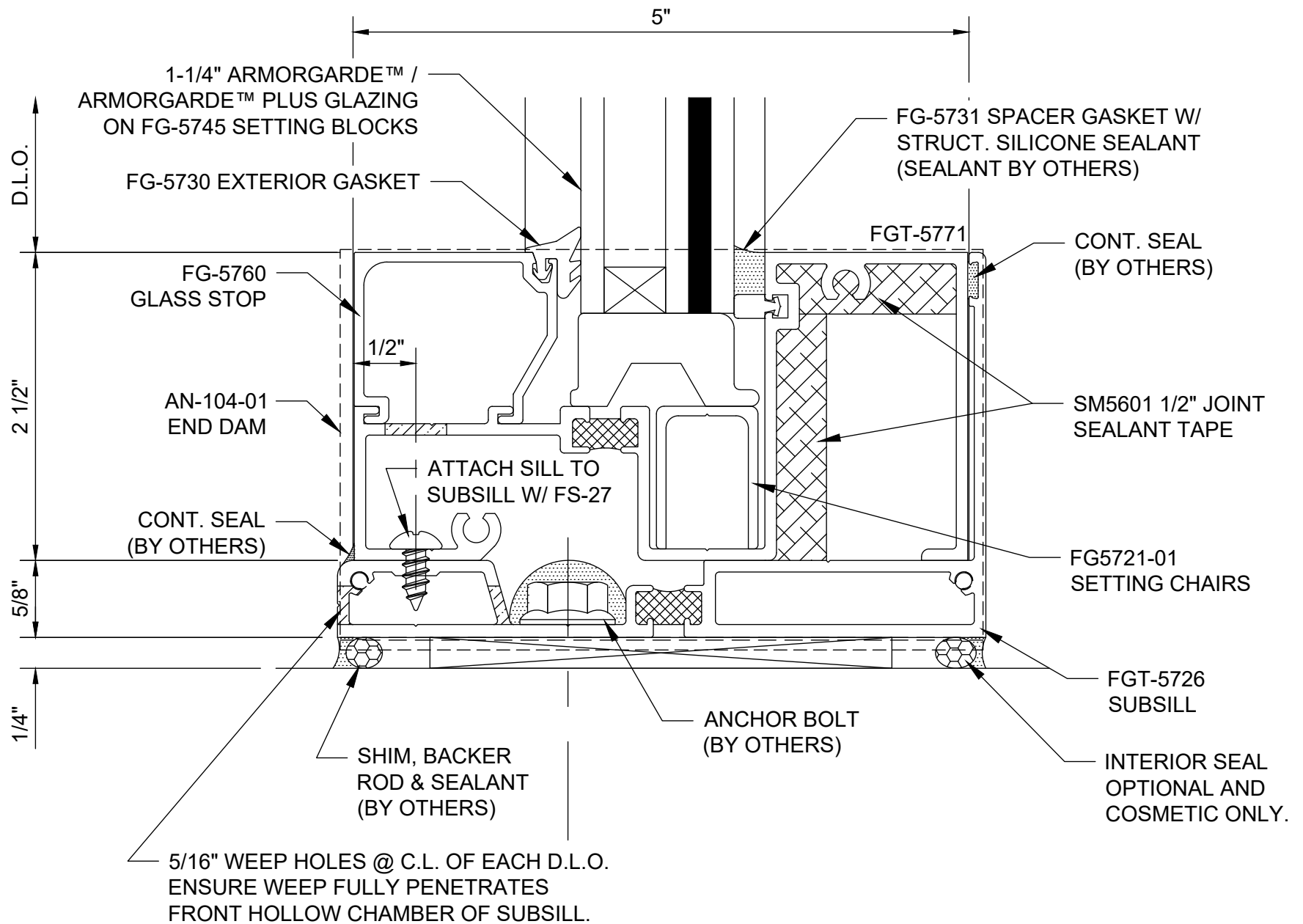
## ArmorDefend™ Plus Storefront - Wet Glazed Head Option 2 - H0702



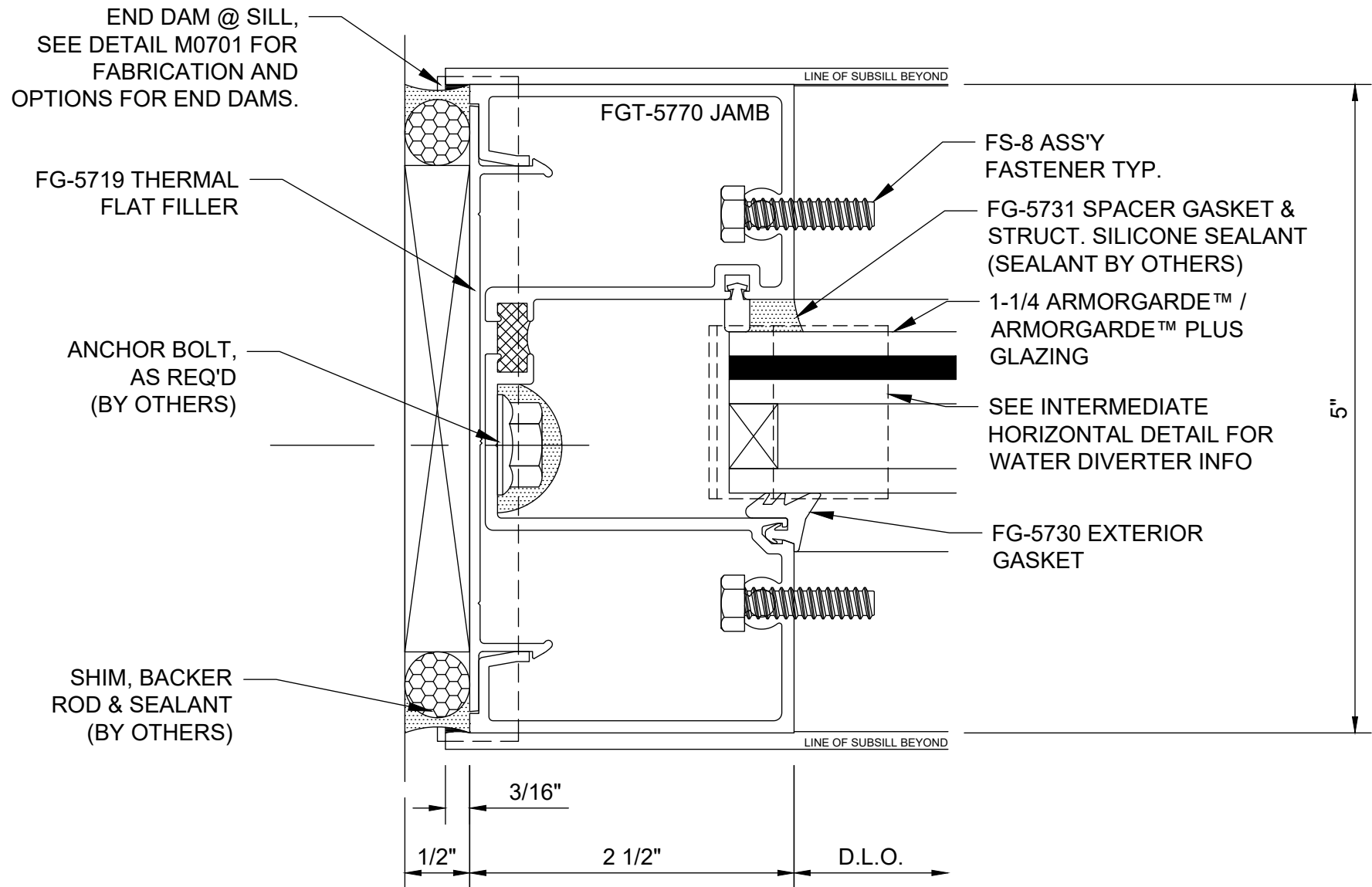
## ArmorDefend™ Plus Storefront - Wet Glazed Intermediate Horizontal - H0704



## ArmorDefend™ Plus Storefront - Wet Glazed Sill Option 1 - H0708

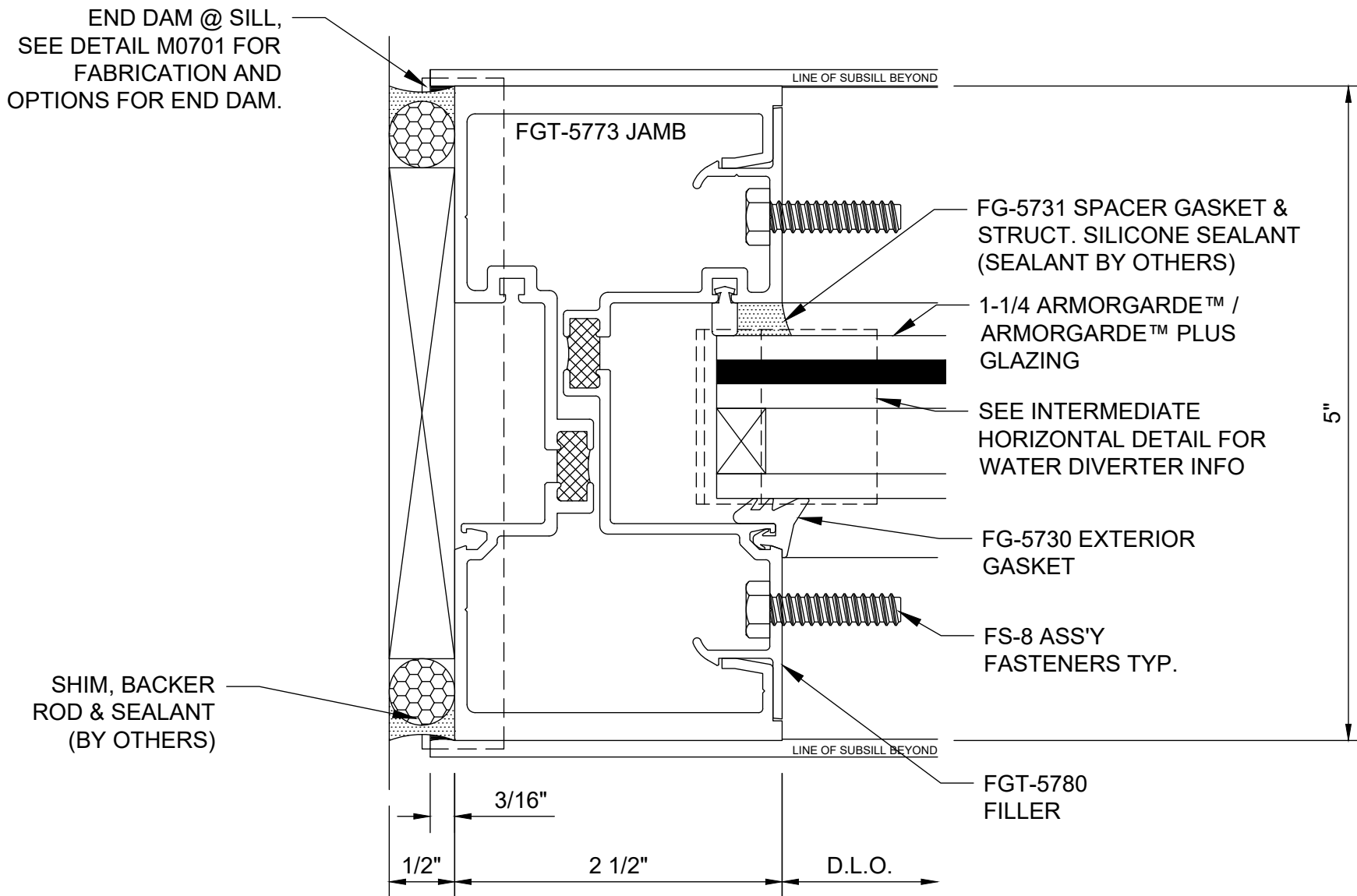


## ArmorDefend™ Plus Storefront - Wet Glazed Sill Option 2 - H0709

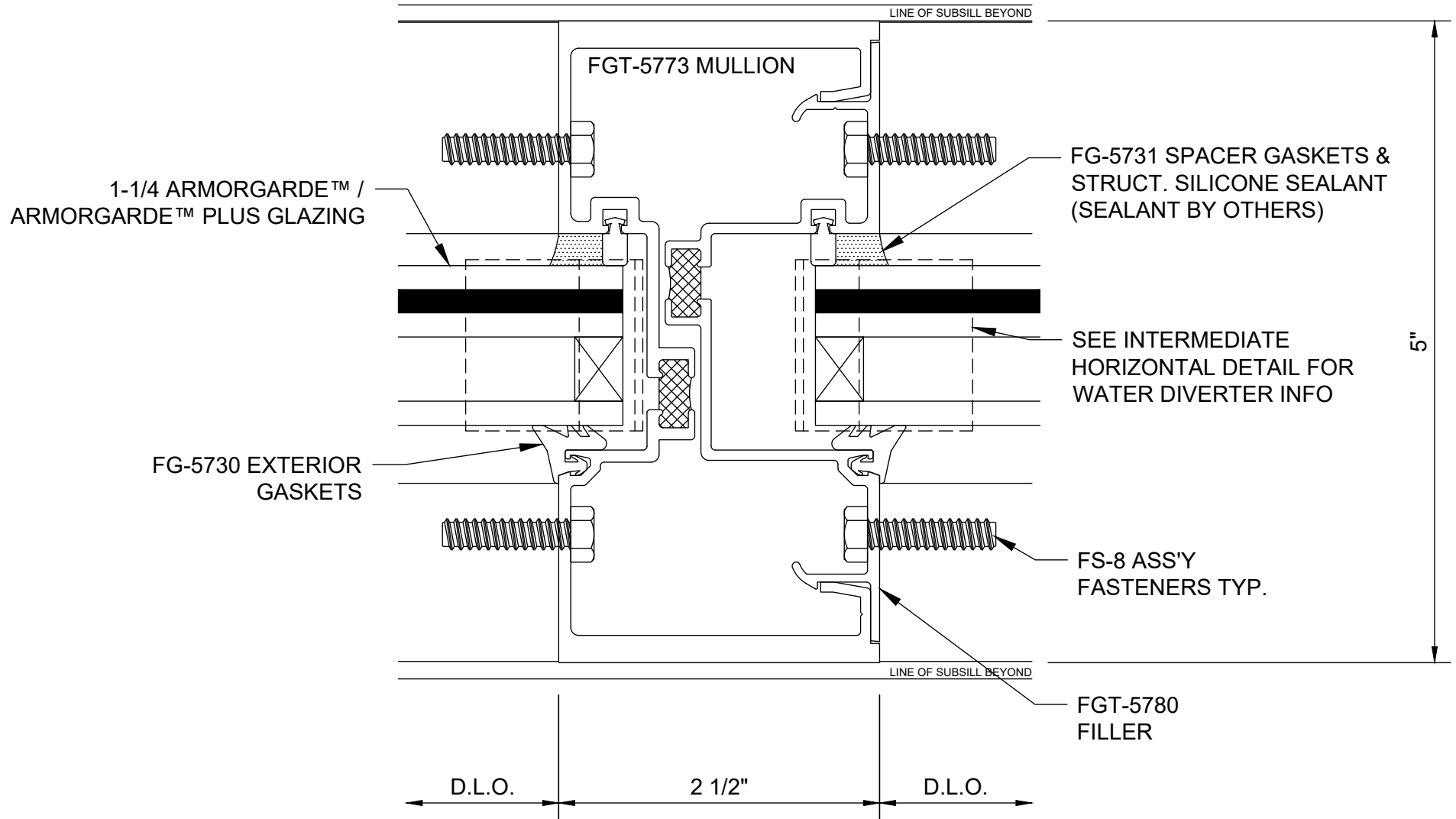


## ArmorDefend™ Plus Storefront - Wet Glazed Jamb Option 1 - V0701

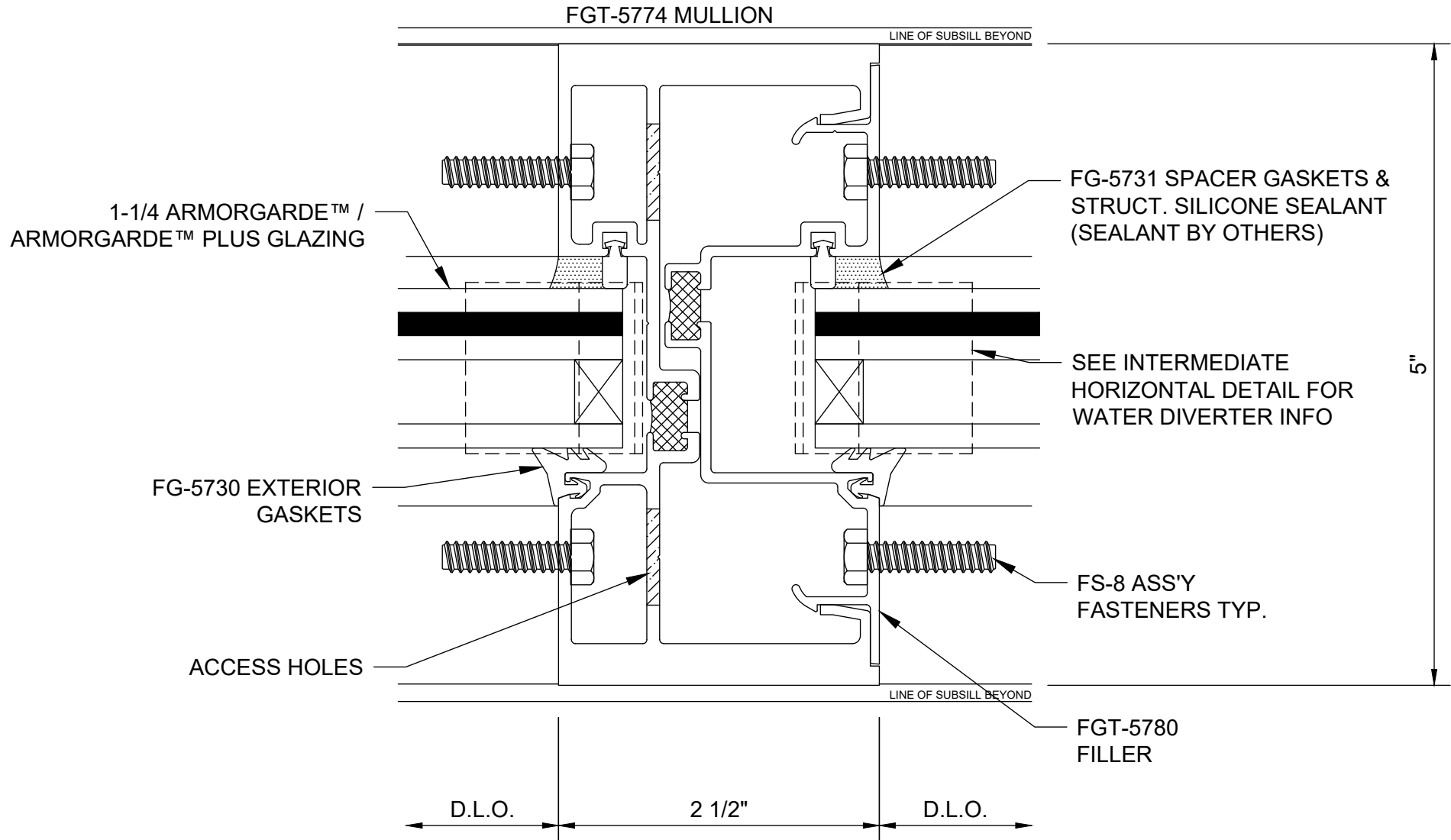




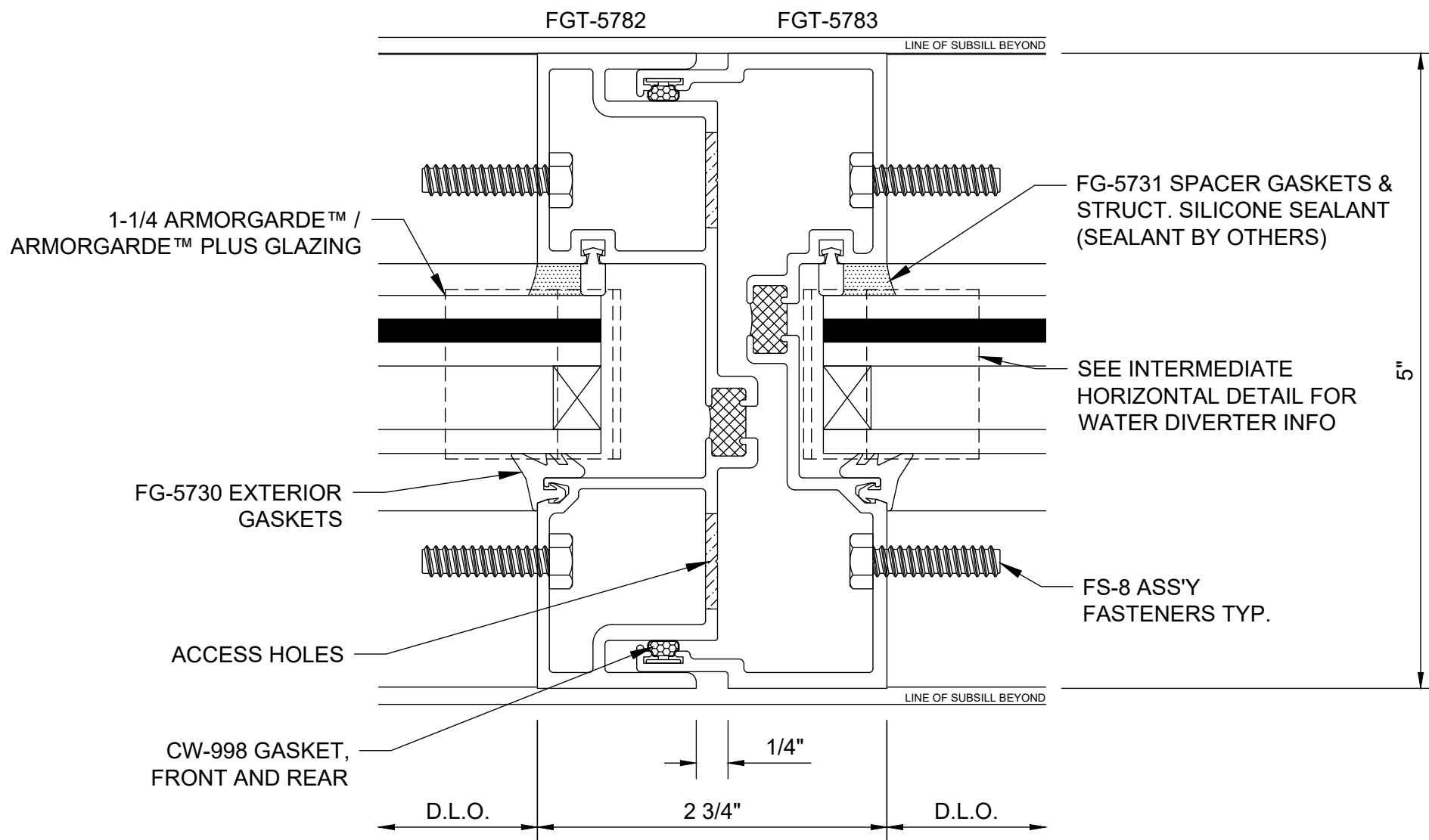
## ArmorDefend™ Plus Storefront - Wet Glazed Jamb Option 2 - V0702



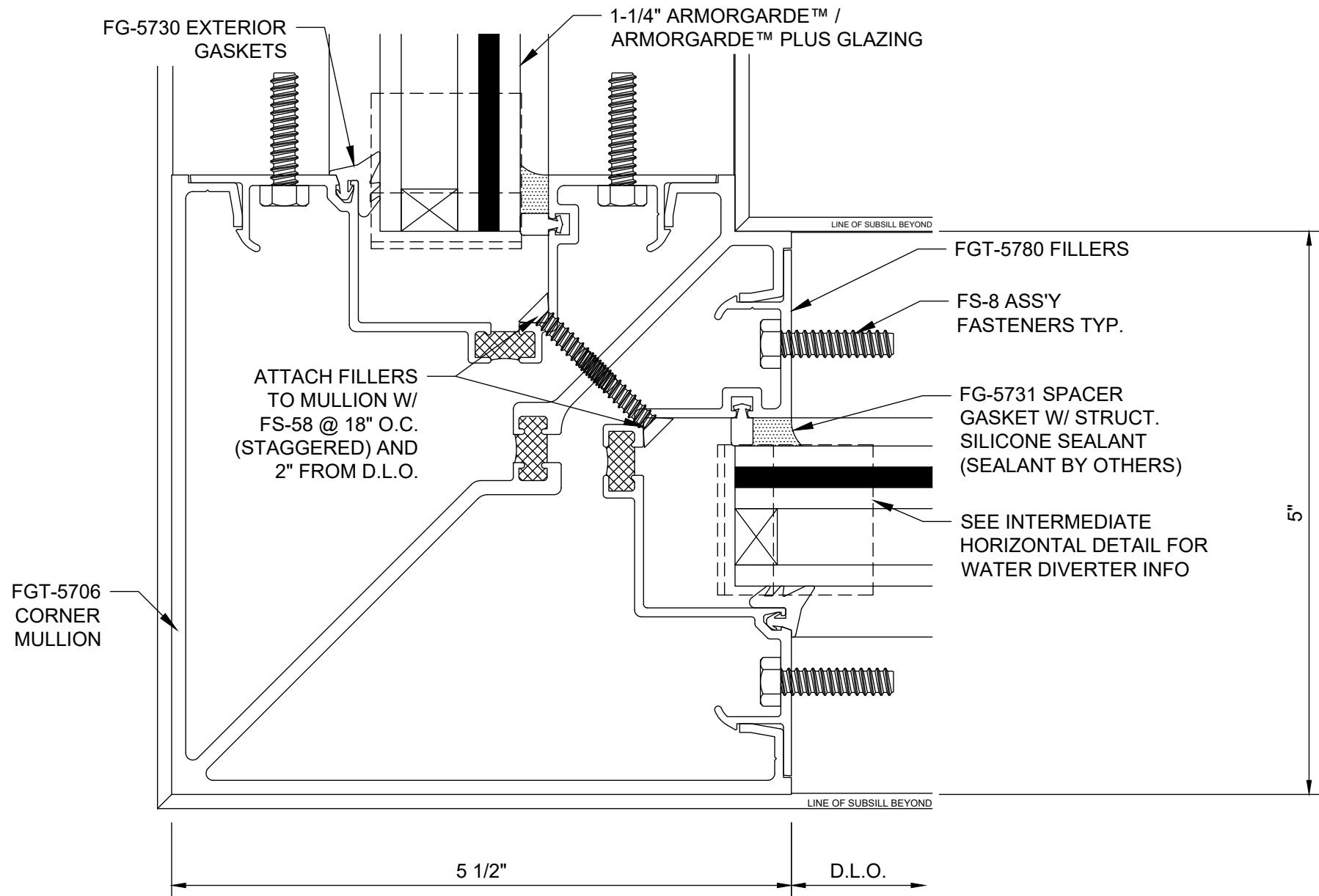
## ArmorDefend™ Plus Storefront - Wet Glazed Typical Vertical - V0704



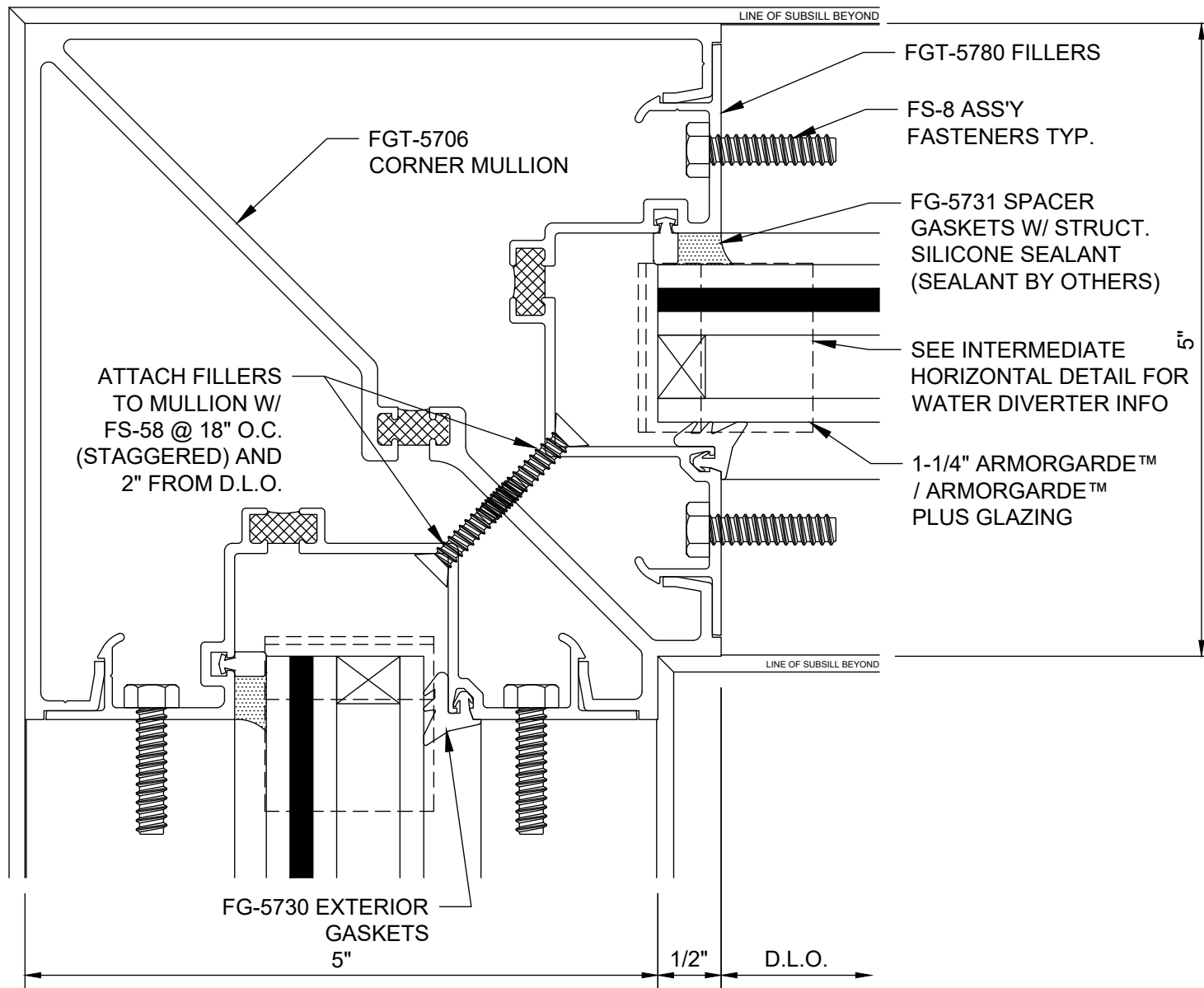
## ArmorDefend™ Plus Storefront - Wet Glazed Heavy Vertical - V0706



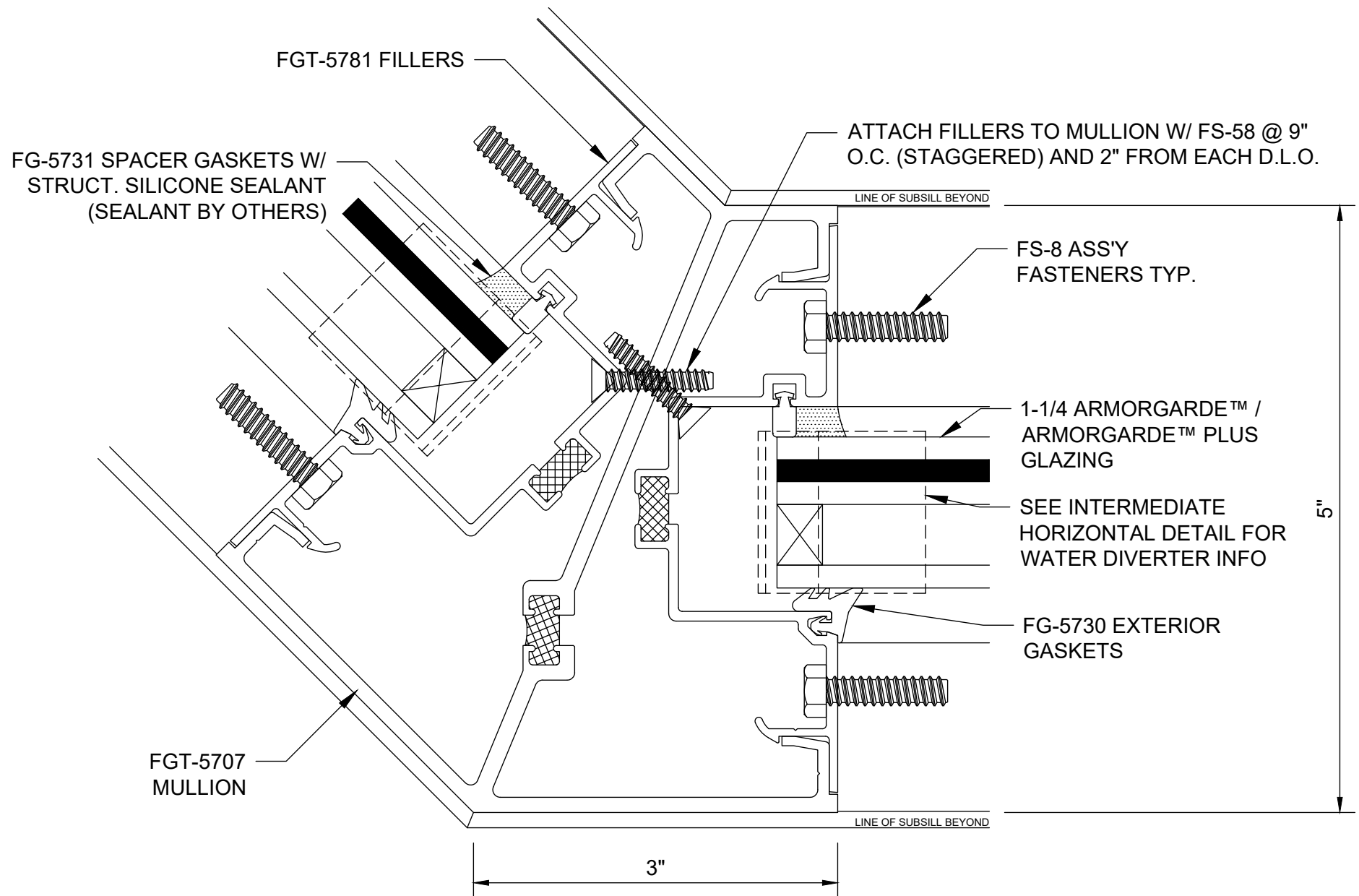
## ArmorDefend™ Plus Storefront - Wet Glazed Expansion Vertical - V0708



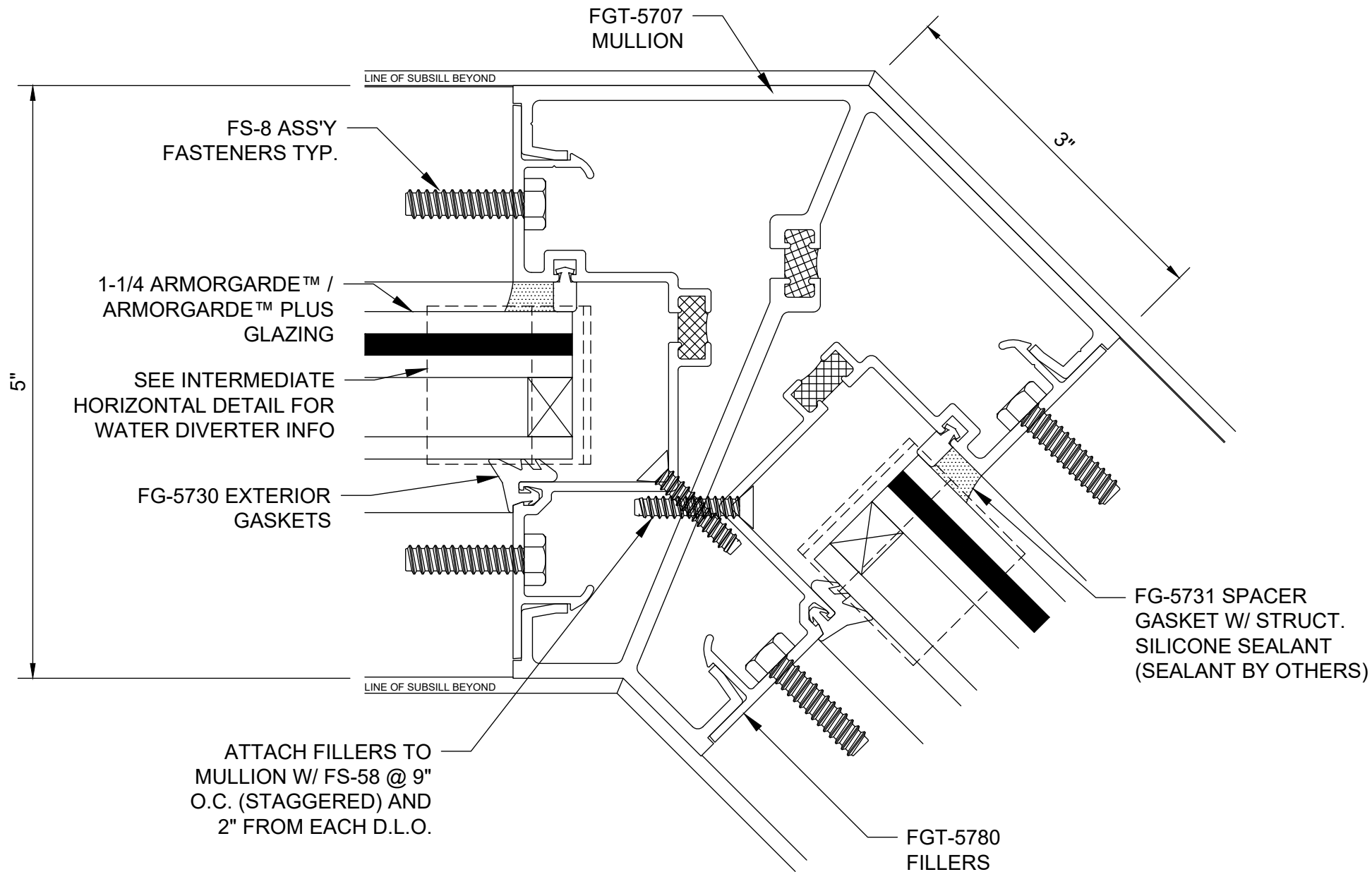
## ArmorDefend™ Plus Storefront - Wet Glazed 90° Outside Corner - V0711



## ArmorDefend™ Plus Storefront - Wet Glazed 90° Inside Corner - V0712



## ArmorDefend™ Plus Storefront - Wet Glazed 135° Outside Corner - V0714

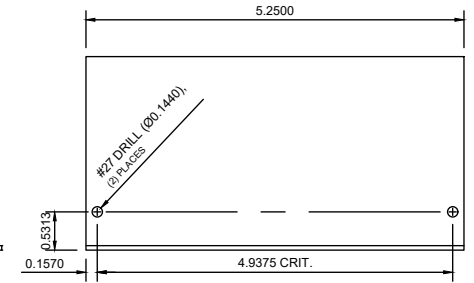
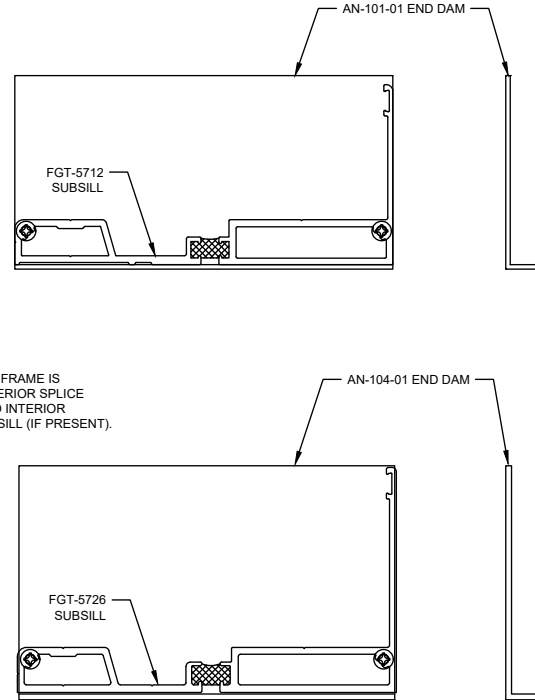
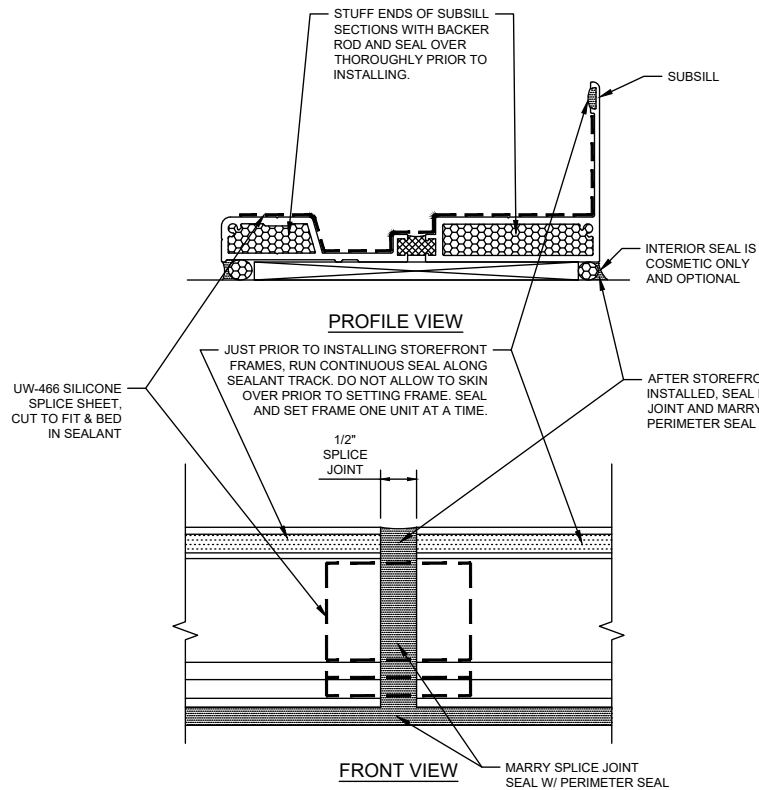


## ArmorDefend™ Plus Storefront - Wet Glazed 135° Inside Corner - V0716



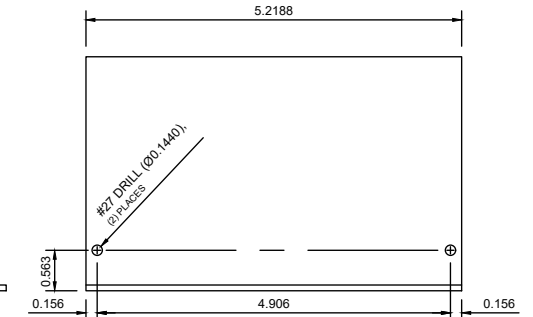
**NOTES:**

1. APPLY SM5601 ISOCRYL TAPE TO BOTTOM LEG OF END DAM PRIOR TO ATTACHMENT TO SUBSILL PER STOREFRONT MANUALS.
2. AFTER END DAM IS INSTALLED, SEAL ALL ROUND JOINERY WITH SUBSILL PER MANUALS.
3. SPLICING OF FGT-5712 SUBSILL SHOWN BELOW. PROCEDURE FOR FGT-5726 IS SIMILAR. ENSURE SILICONE SHEET TERMINATES JUST BELOW REAR SEALANT TRACK.
4. THE AN-104-01 END DAM COMES PRE-FABRICATED FOR SCREW ATTACHMENT TO SUBSILL. FAB SHOWN BELOW FOR AN-104-01 IS FOR REFERENCE ONLY. THE AN-101-01 END DAM IS CUT TO LENGTH ONLY AND REQUIRES CUSTOMER FABRICATION. SEE BELOW FOR FABRICATION.



**SIDE VIEW**

FABRICATION FOR END DAM ATTACHMENT TO FGT-5712 SUBSILL USING SCREW SPLINES. ATTACH W/ (2) FS-23



**SIDE VIEW**

FABRICATION FOR END DAM ATTACHMENT TO FGT-5726 SUBSILL USING SCREW SPLINES. PART COMES PRE-FABRICATED; FAB SHOWN FOR REFERENCE ONLY. ATTACH W/ (2) FS-23.

## ArmorDefend™ Plus Storefront Subsill Splicing & End Dam Attachment - M0701