

Oldcastle BuildingEnvelope®

1-866-Oldcastle (653-2278) - www.obe.com

ArmorDefend™ Plus Storefront - Dry Glazed 2-1/2" X 5" Center Set Storefront w/ 1-1/4" ArmorGarde™/ArmorGarde™ Plus Glazing

(Drawing numbers---i.e., V0731---used as CAD detail reference only)

Elevation

Horizontal Details

H0731	Head Option 1
H0732	Head Option 2
H0734	Intermediate Horizontal
H0738	Sill Option 1
H0739	Sill Option 2

Vertical Details

V0731	Jamb Option 1
V0732	Jamb Option 2
V0734	Typical Vertical
V7036	Heavy Vertical
V0738	Expansion Vertical

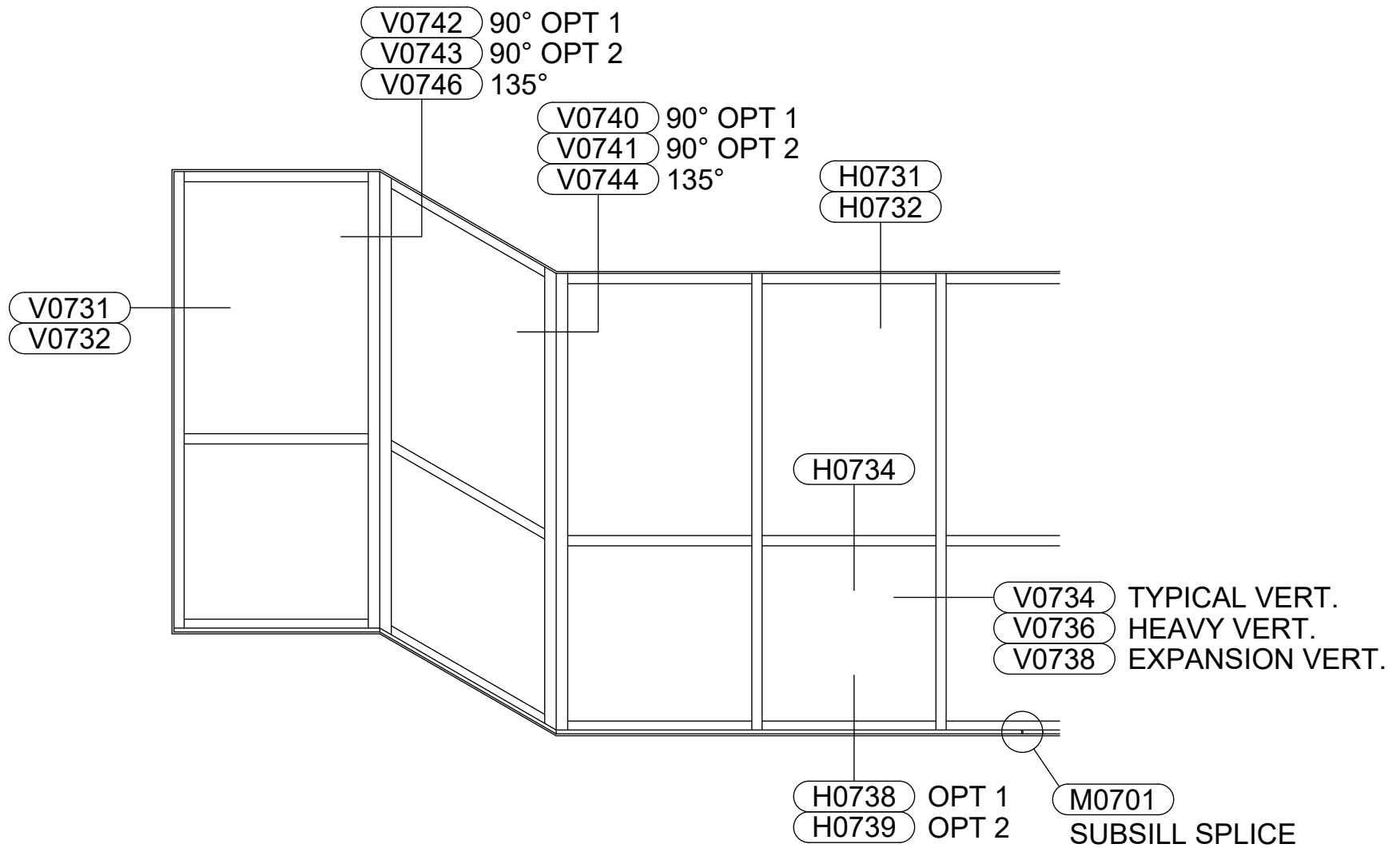
Corner Details

V0741	90° Outside Corner
V0742	90° Inside Corner
V0744	135° Outside Corner
V0746	135° Inside Corner

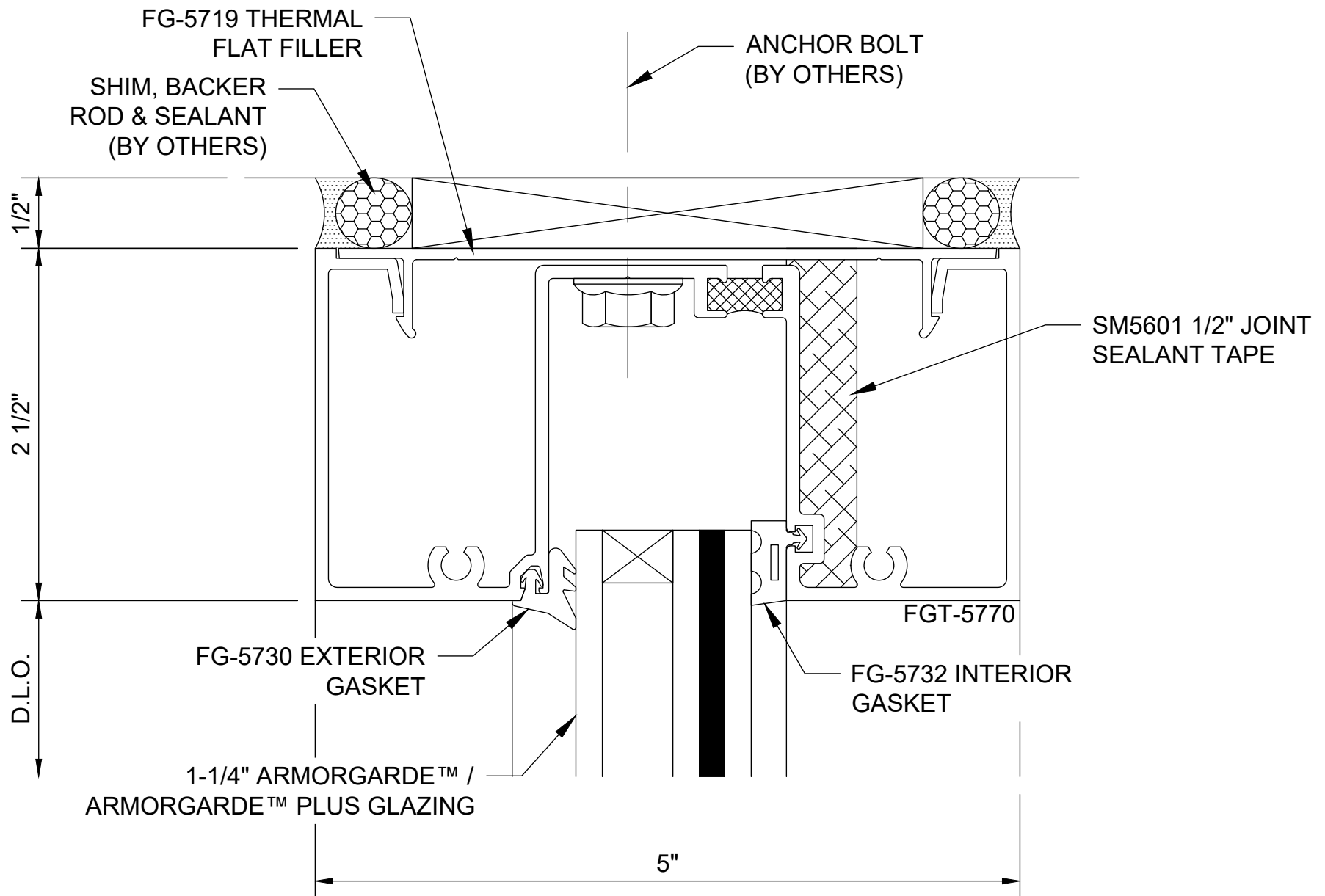
Misc. Details

M0701	Subsill Splicing & End Dam
-------	----------------------------

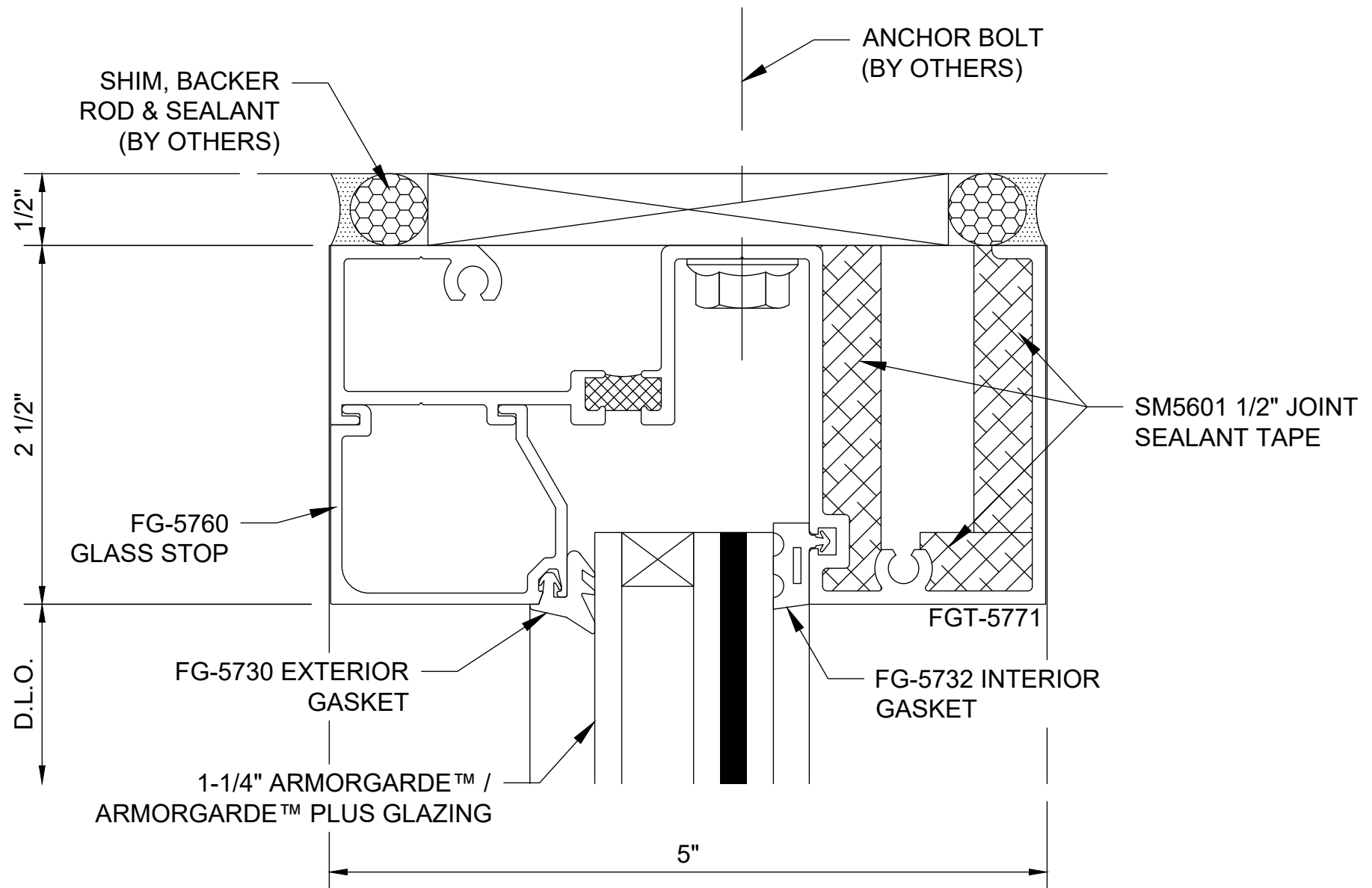
Table of Contents



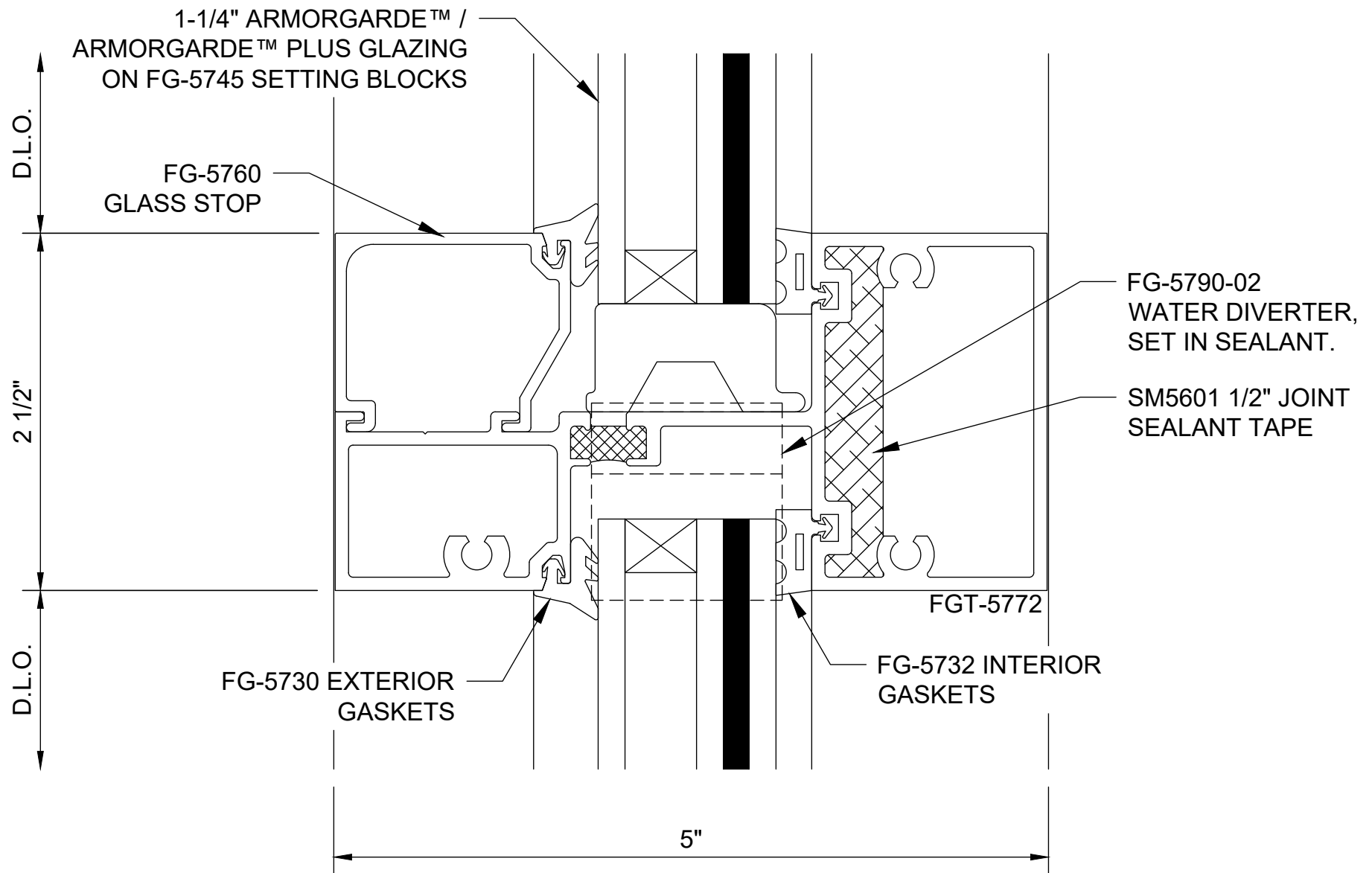
ArmorDefend™ Plus Storefront - Dry Glazed Elevation / CAD Reference



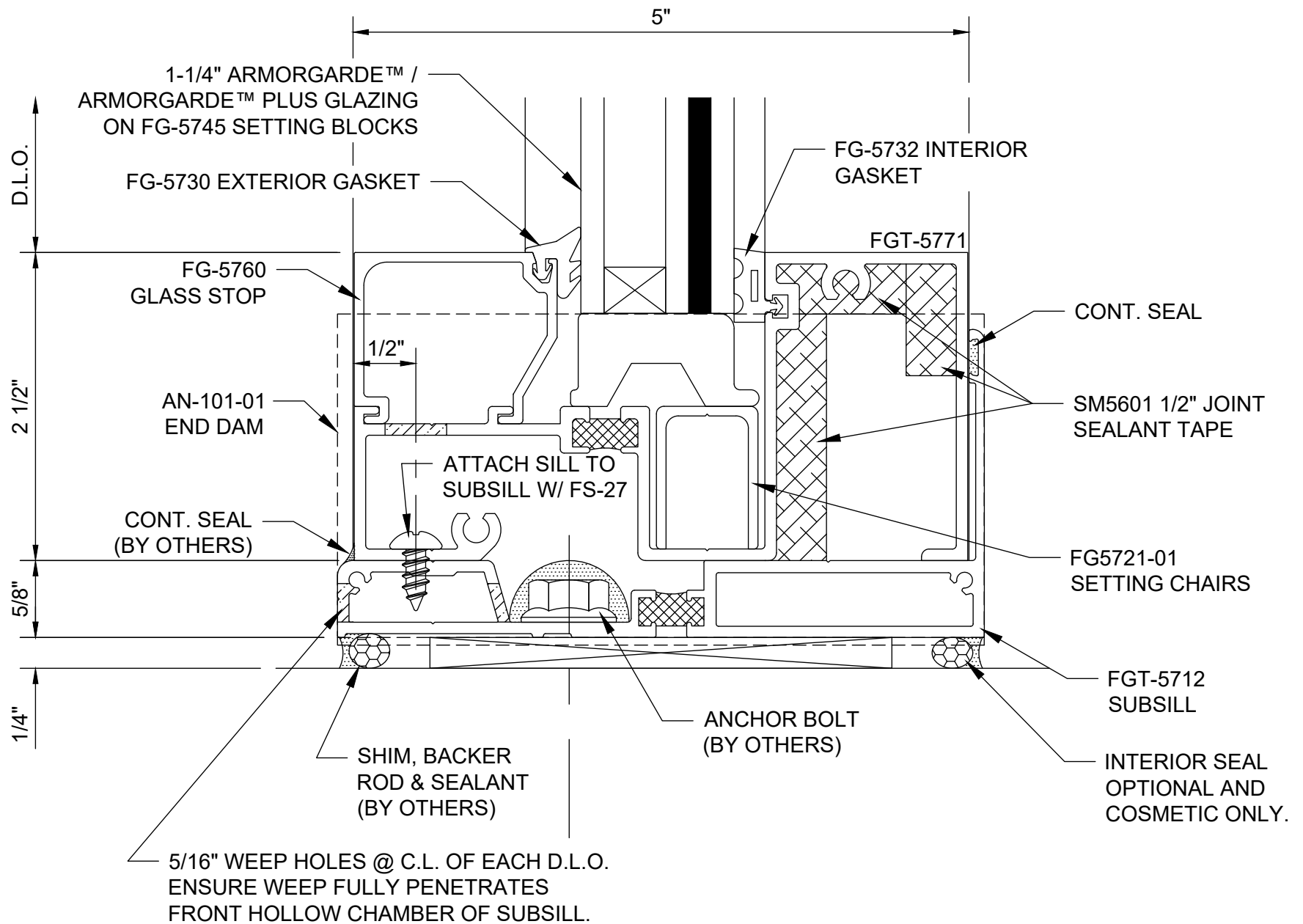
ArmorDefend™ Plus Storefront - Dry Glazed Head Option 1 - H0731



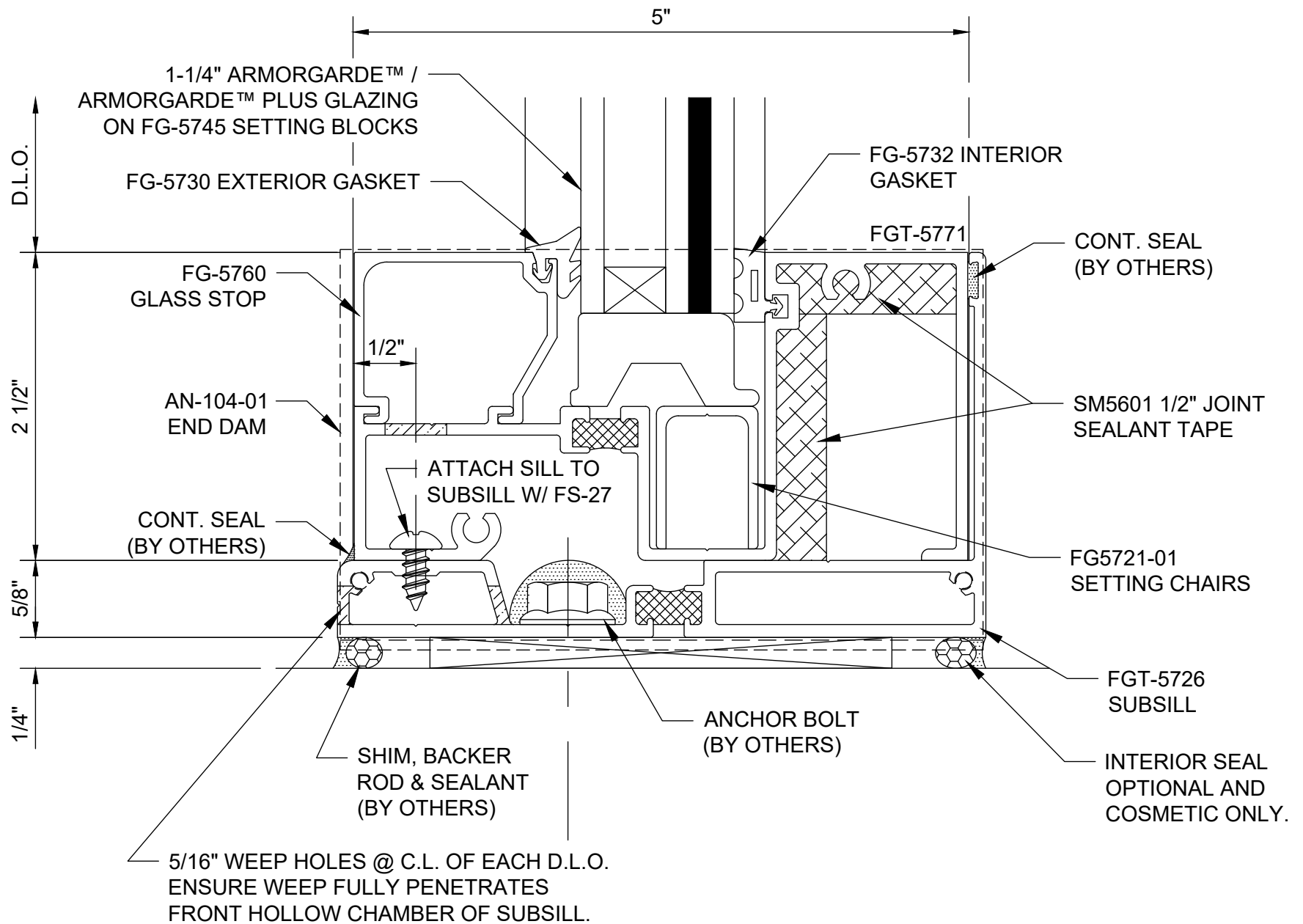
ArmorDefend™ Plus Storefront - Dry Glazed Head Option 2 - H0732



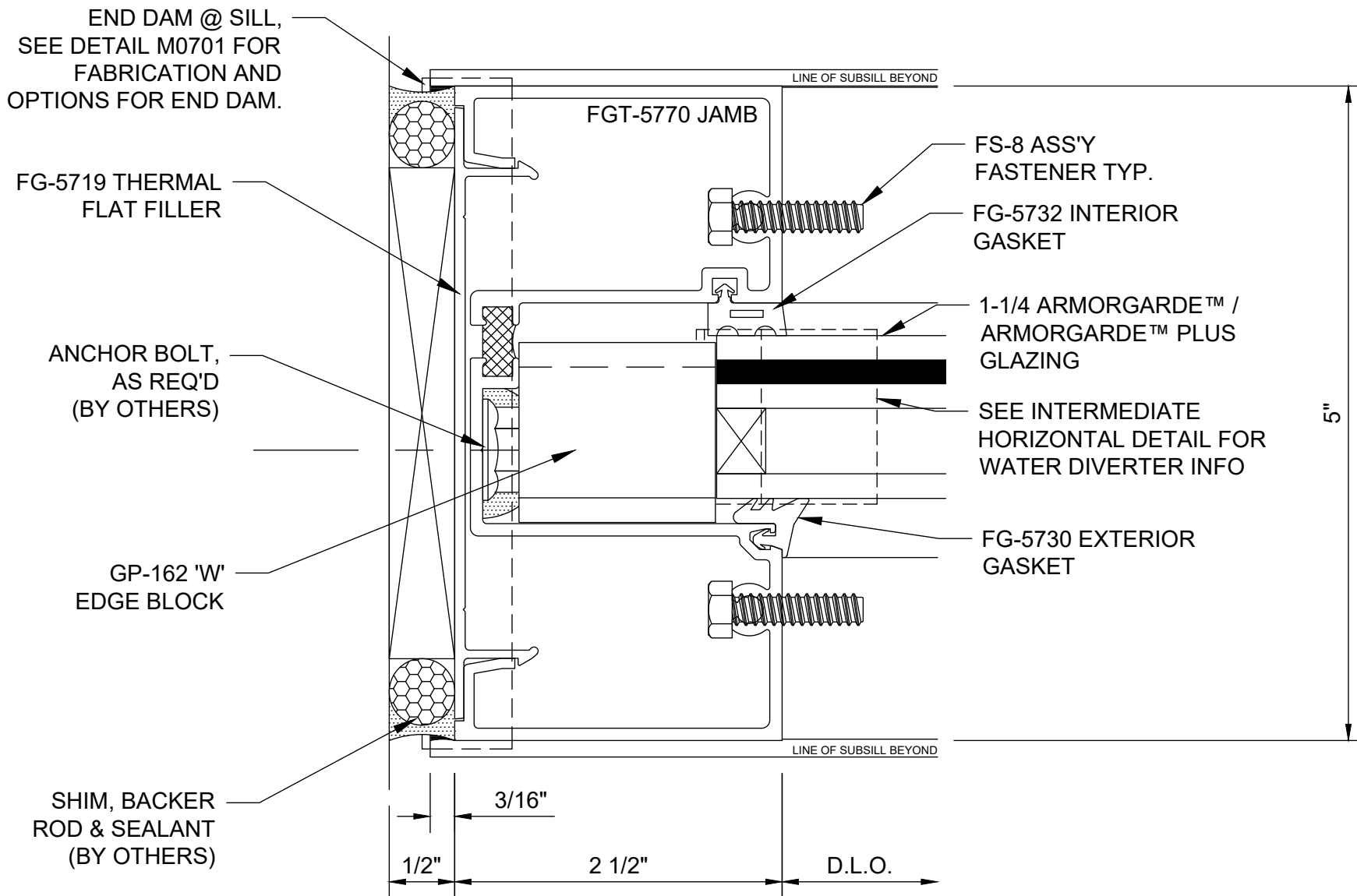
ArmorDefend™ Plus Storefront - Dry Glazed Intermediate Horizontal - H0734



ArmorDefend™ Plus Storefront - Dry Glazed Sill Option 1 - H0738

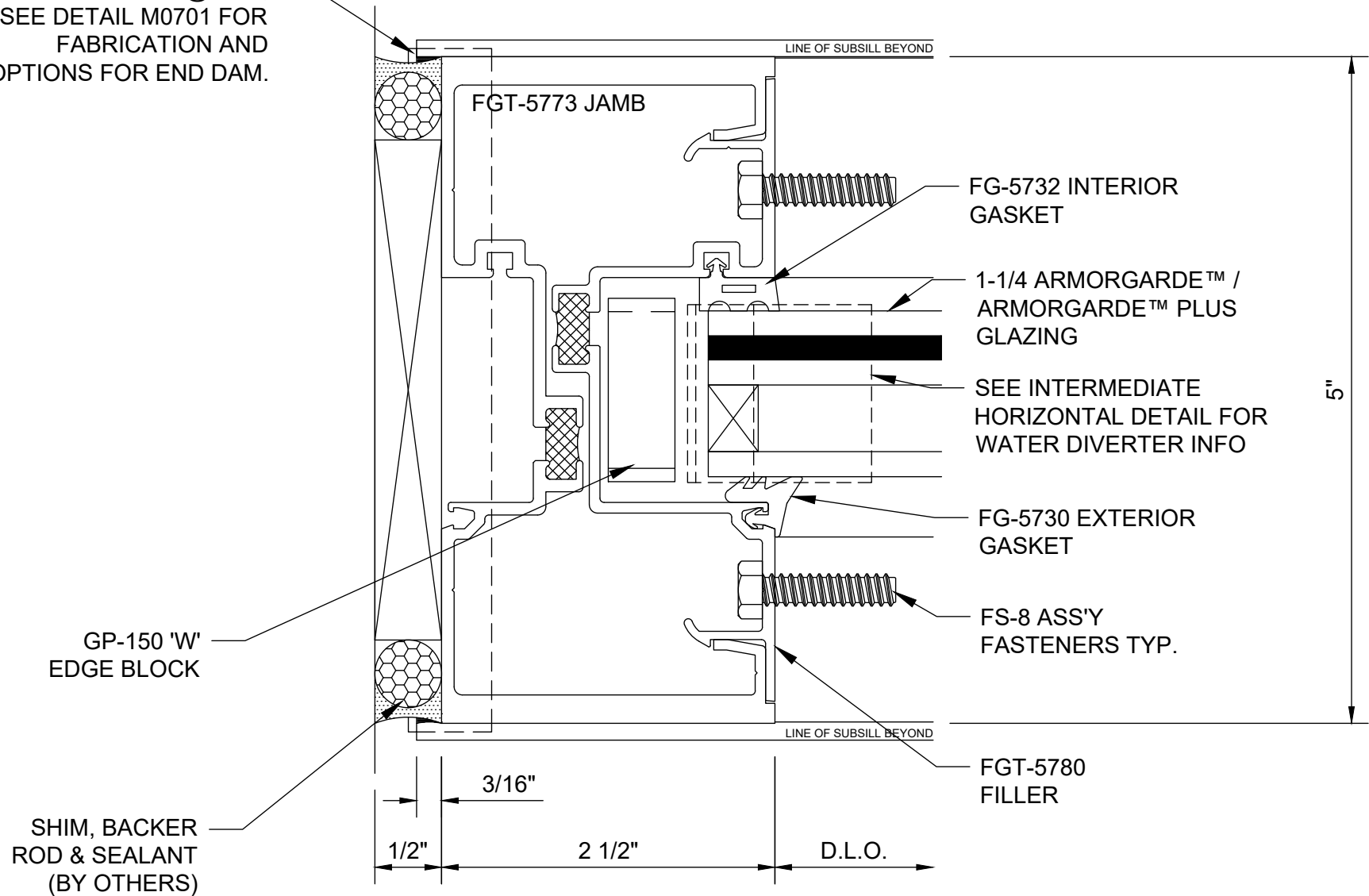


ArmorDefend™ Plus Storefront - Dry Glazed Sill Option 2 - H0739

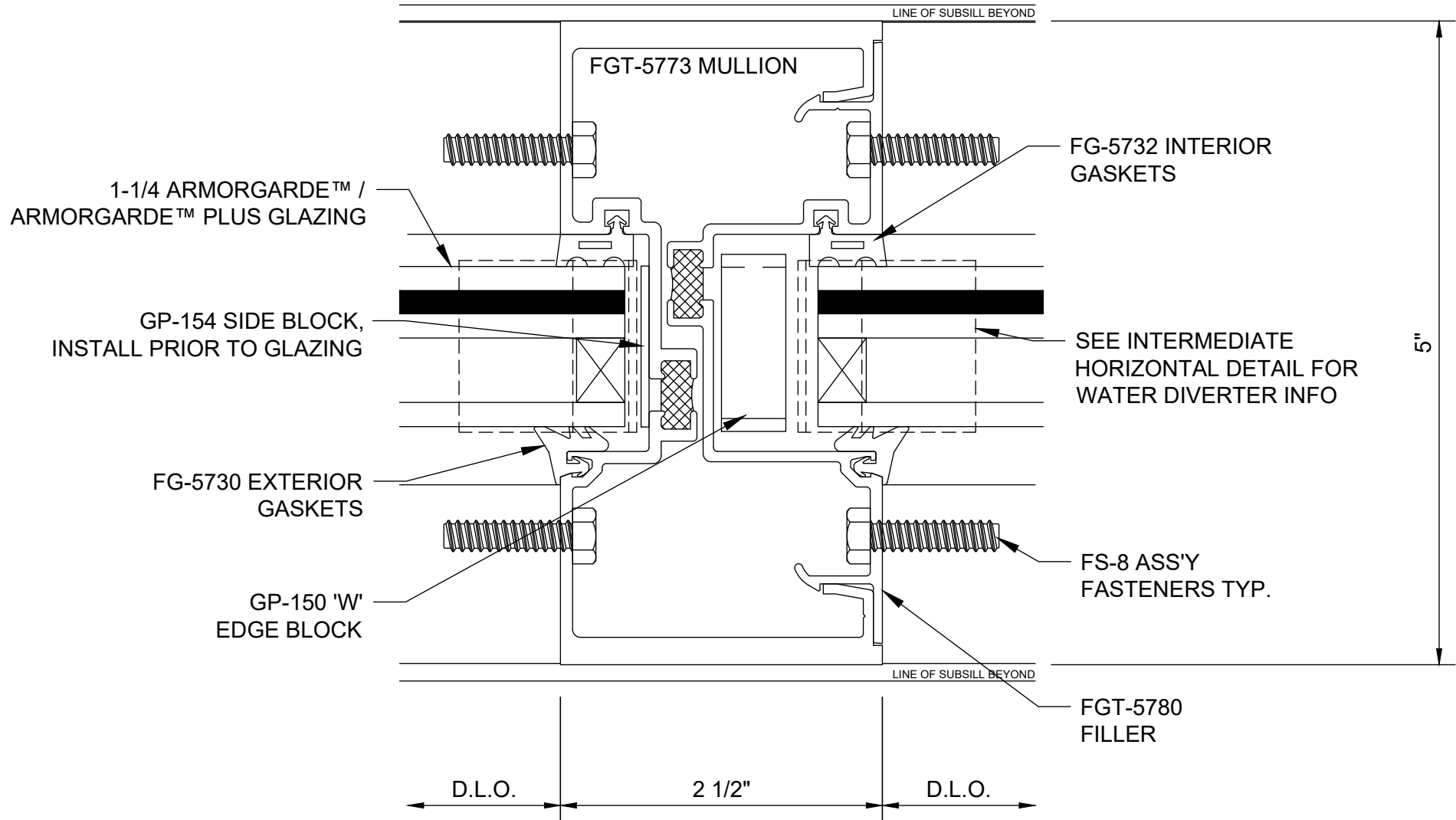


ArmorDefend™ Plus Storefront - Dry Glazed Jamb Option 1 - V0731

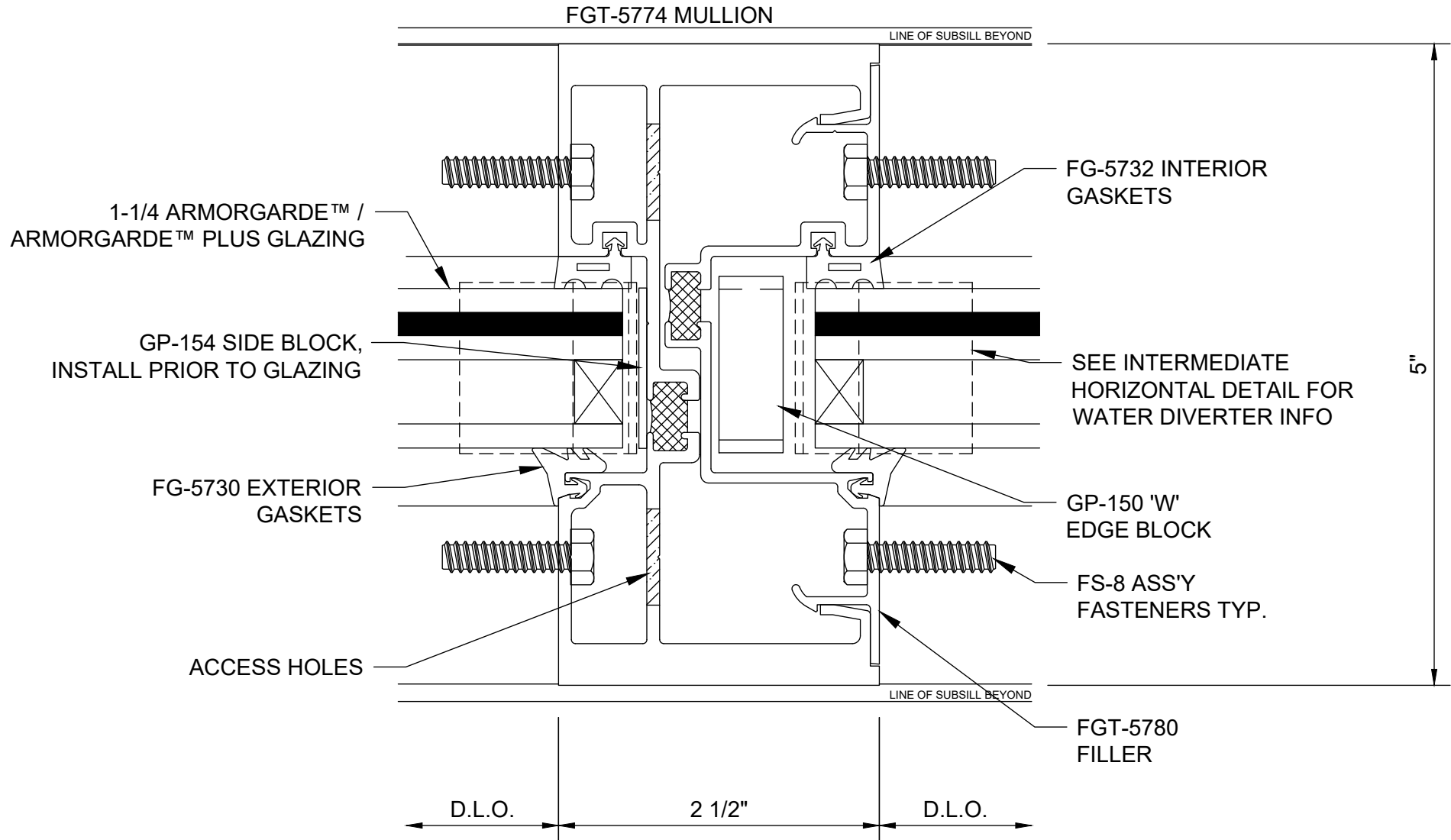
END DAM @ SILL,
SEE DETAIL M0701 FOR
FABRICATION AND
OPTIONS FOR END DAM.



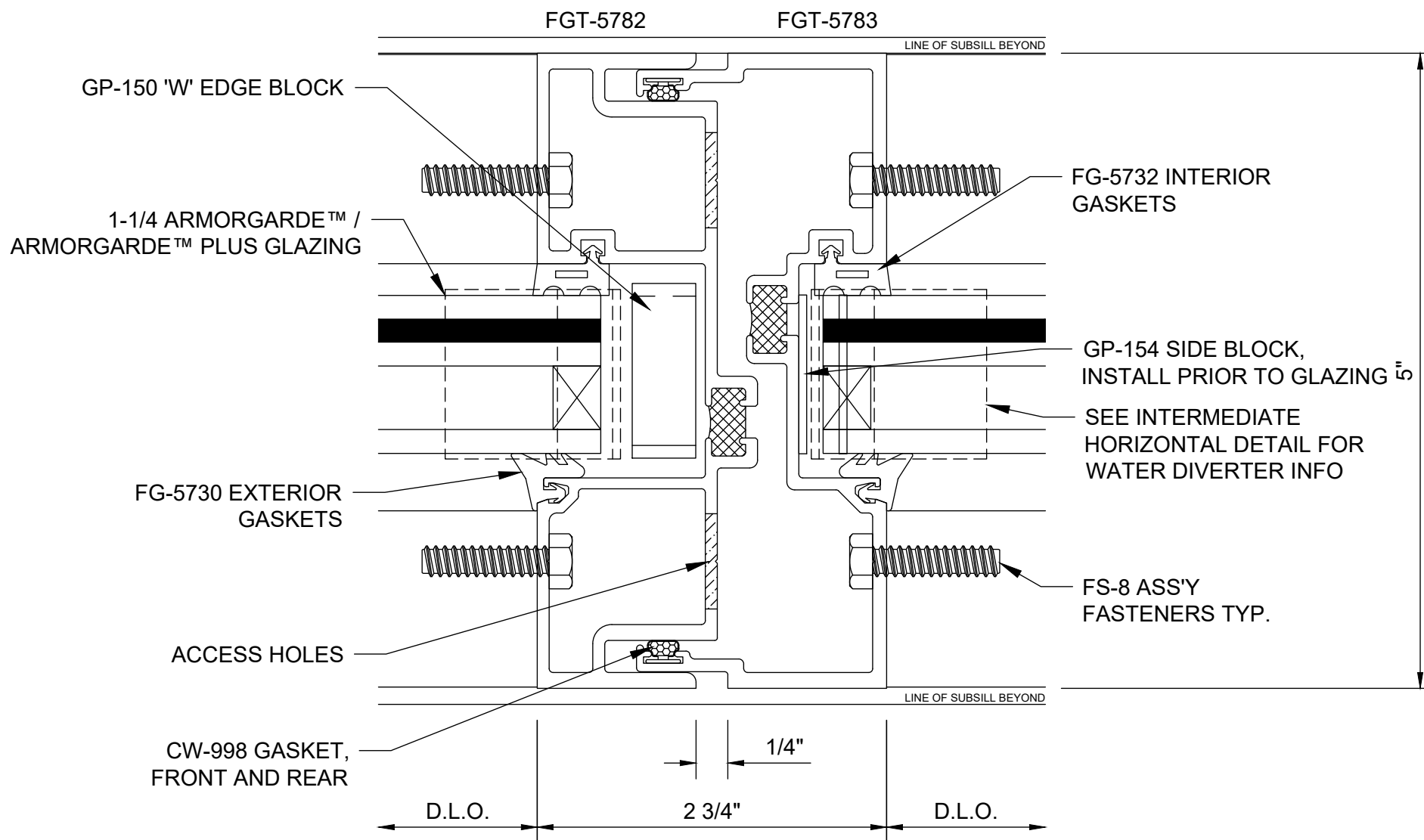
ArmorDefend™ Plus Storefront - Dry Glazed Jamb Option 2 - V0732



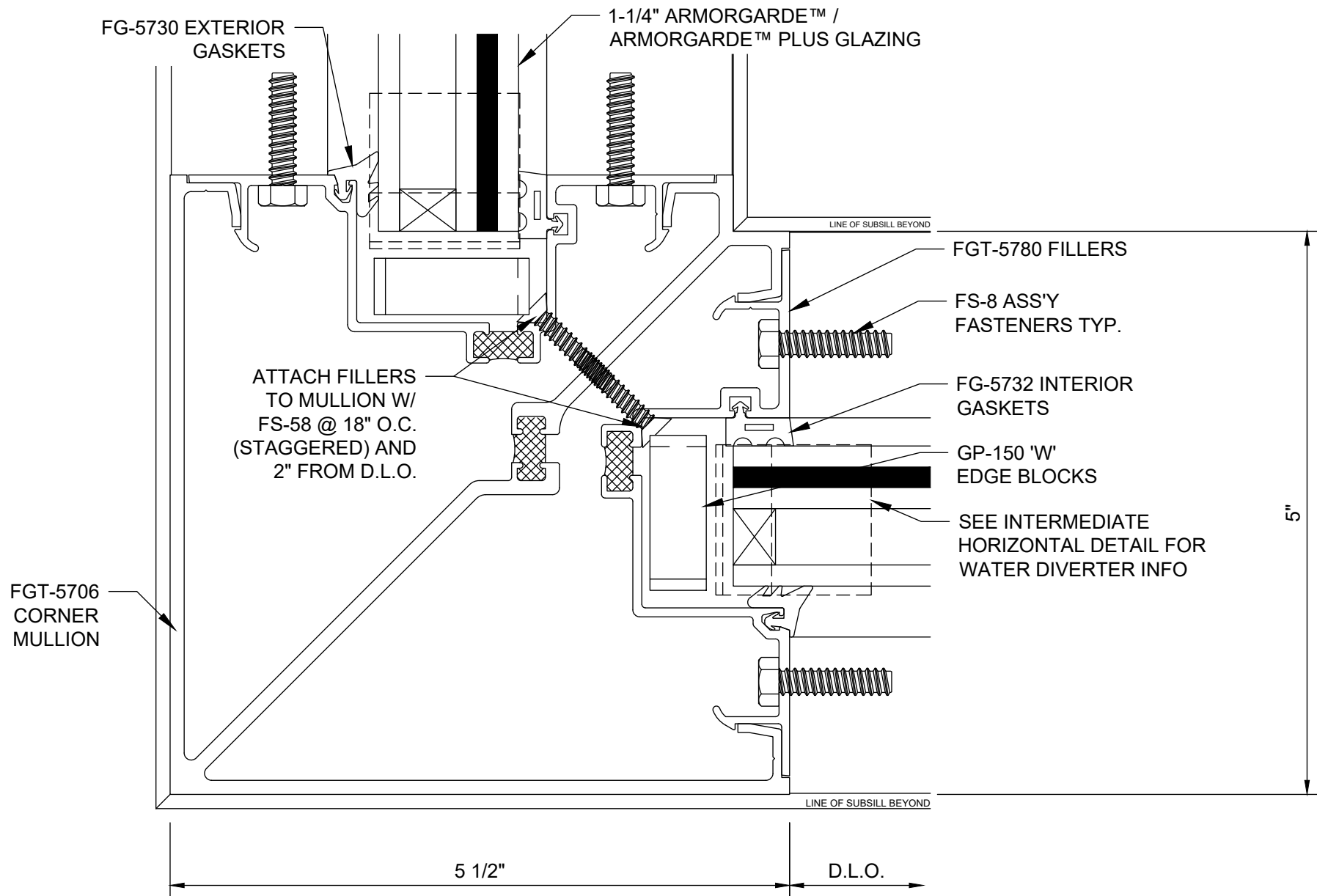
ArmorDefend™ Plus Storefront - Dry Glazed Typical Vertical - V0734



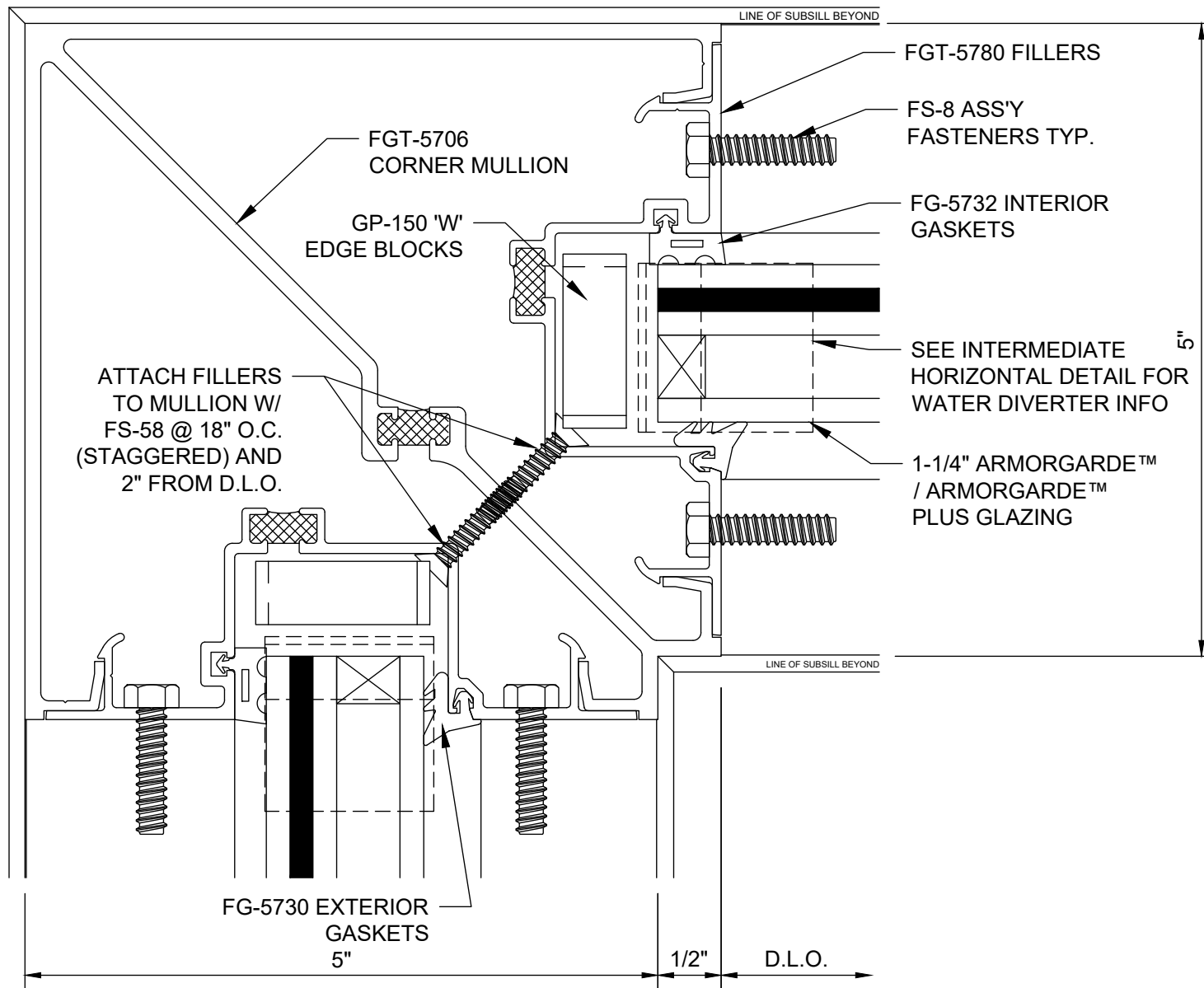
ArmorDefend™ Plus Storefront - Dry Glazed Heavy Vertical - V0734



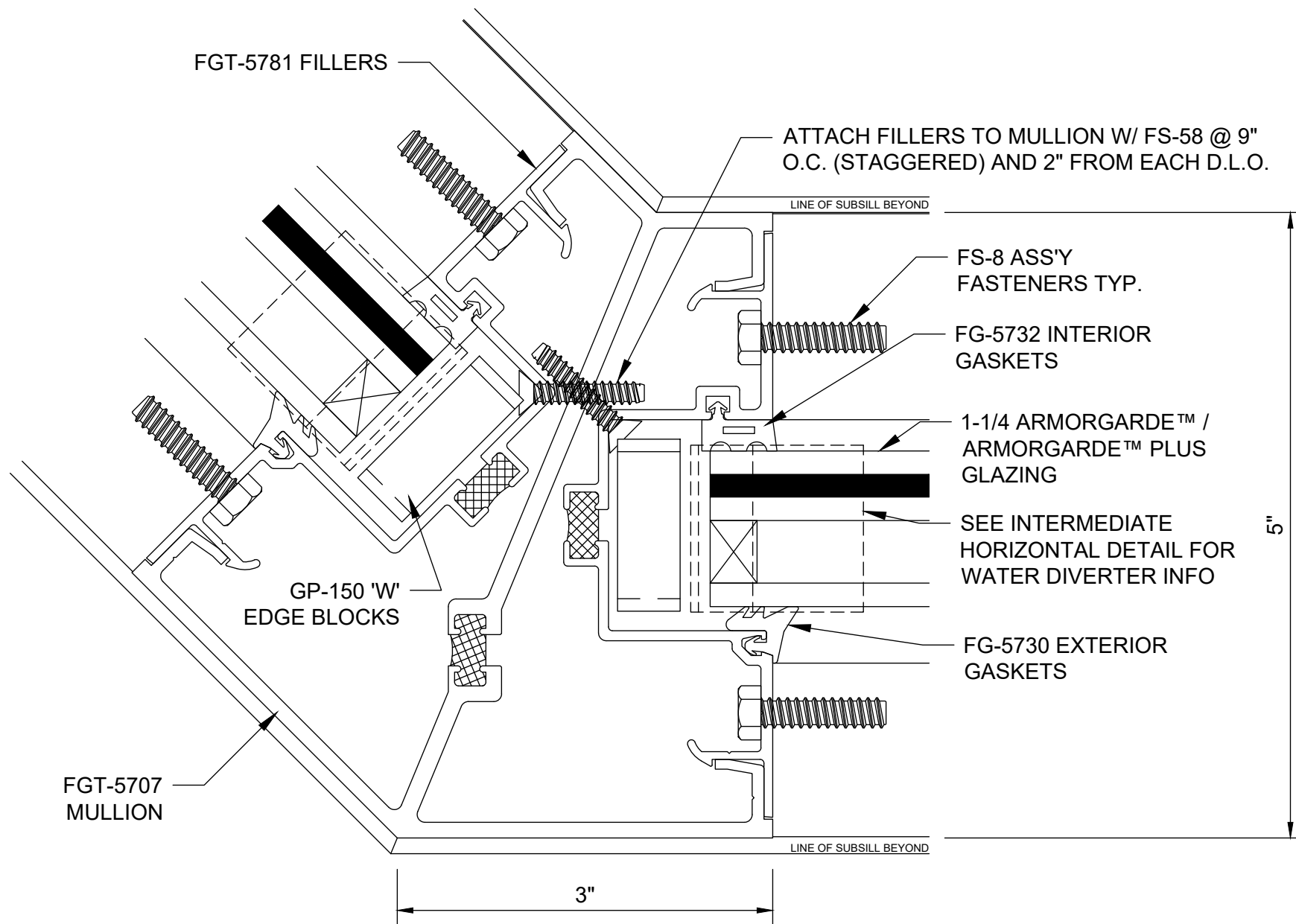
ArmorDefend™ Plus Storefront - Dry Glazed Expansion Vertical - V0738



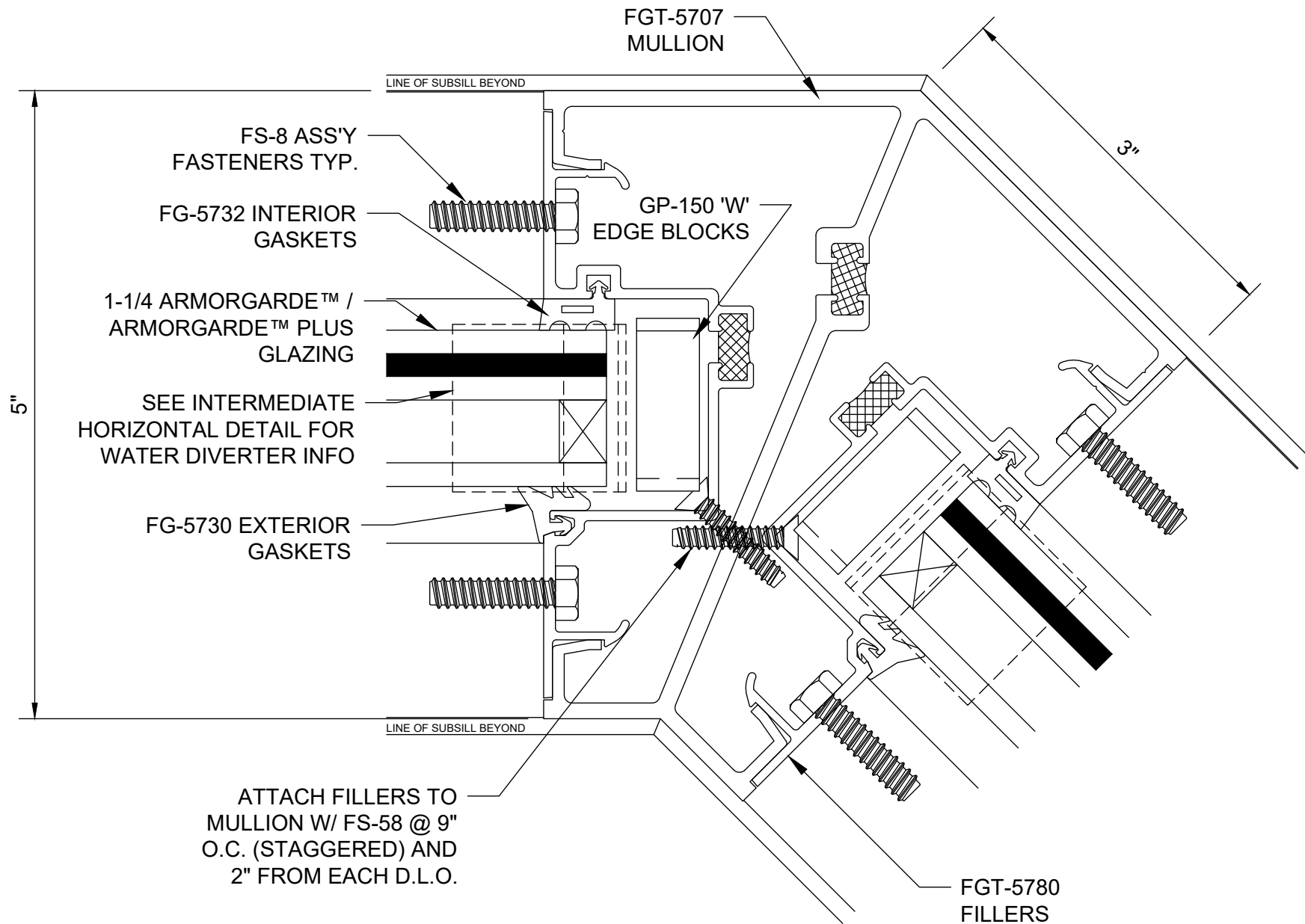
ArmorDefend™ Plus Storefront - Dry Glazed 90° Outside Corner - V0741



ArmorDefend™ Plus Storefront - Dry Glazed 90° Inside Corner - V0743



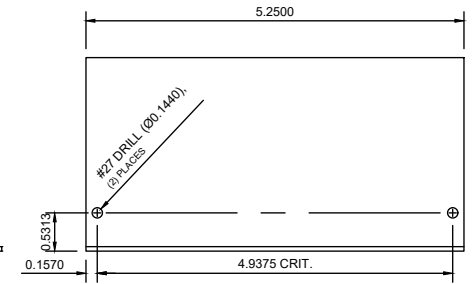
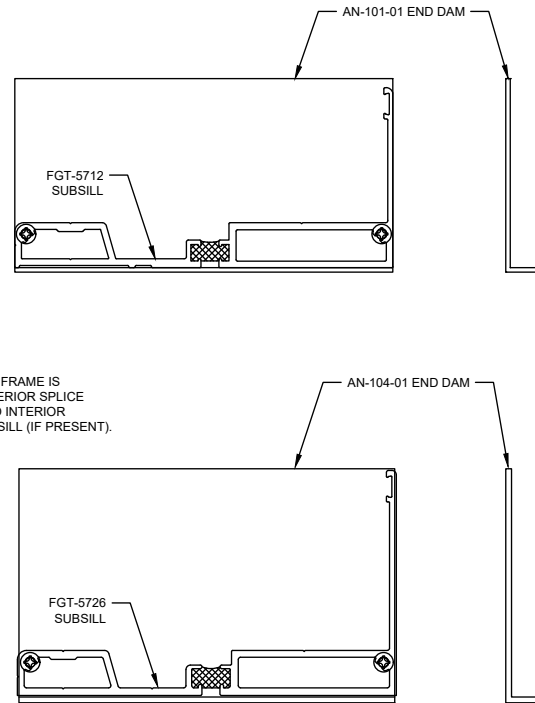
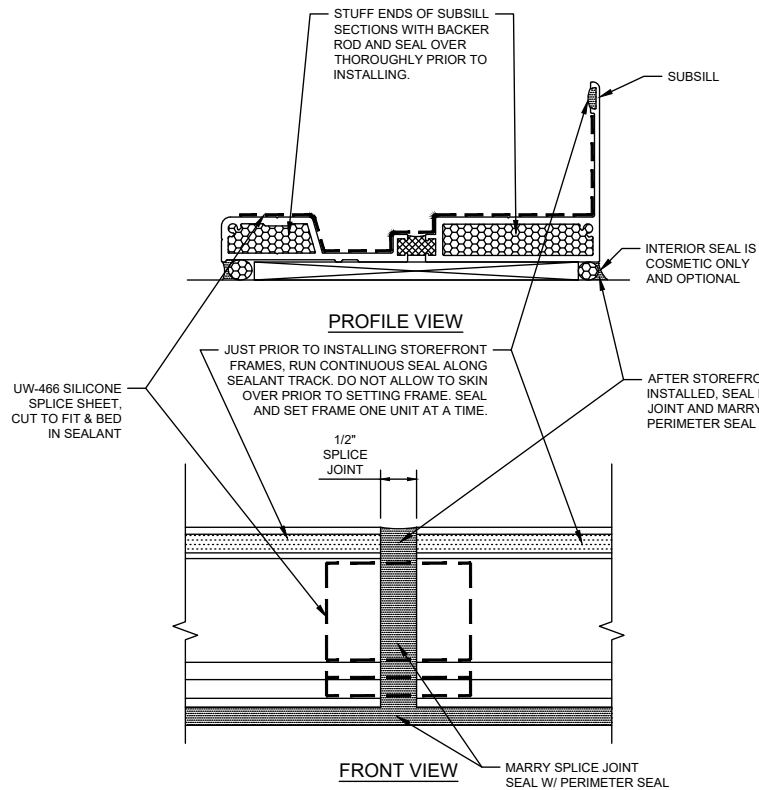
ArmorDefend™ Plus Storefront - Dry Glazed 135° Outside Corner - V0744



ArmorDefend™ Plus Storefront - Dry Glazed 135° Inside Corner - V0746

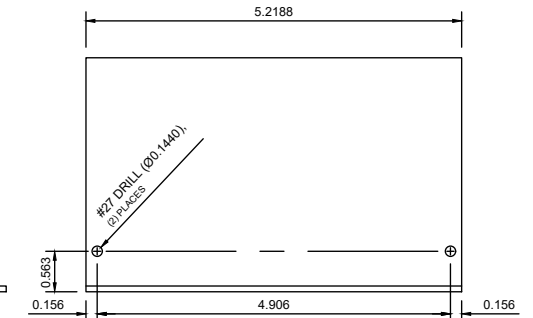
NOTES:

1. APPLY SM5601 ISOCRYL TAPE TO BOTTOM LEG OF END DAM PRIOR TO ATTACHMENT TO SUBSILL PER STOREFRONT MANUALS.
2. AFTER END DAM IS INSTALLED, SEAL ALL ROUND JOINERY WITH SUBSILL PER MANUALS.
3. SPLICING OF FGT-5712 SUBSILL SHOWN BELOW. PROCEDURE FOR FGT-5726 IS SIMILAR. ENSURE SILICONE SHEET TERMINATES JUST BELOW REAR SEALANT TRACK.
4. THE AN-104-01 END DAM COMES PRE-FABRICATED FOR SCREW ATTACHMENT TO SUBSILL. FAB SHOWN BELOW FOR AN-104-01 IS FOR REFERENCE ONLY. THE AN-101-01 END DAM IS CUT TO LENGTH ONLY AND REQUIRES CUSTOMER FABRICATION. SEE BELOW FOR FABRICATION.



SIDE VIEW

FABRICATION FOR END DAM ATTACHMENT TO FGT-5712 SUBSILL USING SCREW SPLINES. ATTACH W/ (2) FS-23



SIDE VIEW

FABRICATION FOR END DAM ATTACHMENT TO FGT-5726 SUBSILL USING SCREW SPLINES. PART COMES PRE-FABRICATED; FAB SHOWN FOR REFERENCE ONLY. ATTACH W/ (2) FS-23.

ArmorDefend™ Plus Storefront Subsill Splicing & End Dam Attachment - M0701