

# Oldcastle BuildingEnvelope®

1-866-Oldcastle (653-2278) - [www.obe.com](http://www.obe.com)

## Reliance™ Veneer System 2-1/2" Sightline w/ 1" Typical Infill - Table of Contents

*(Drawing numbers---i.e., H2931---used as CAD detail reference only)*

### Elevation

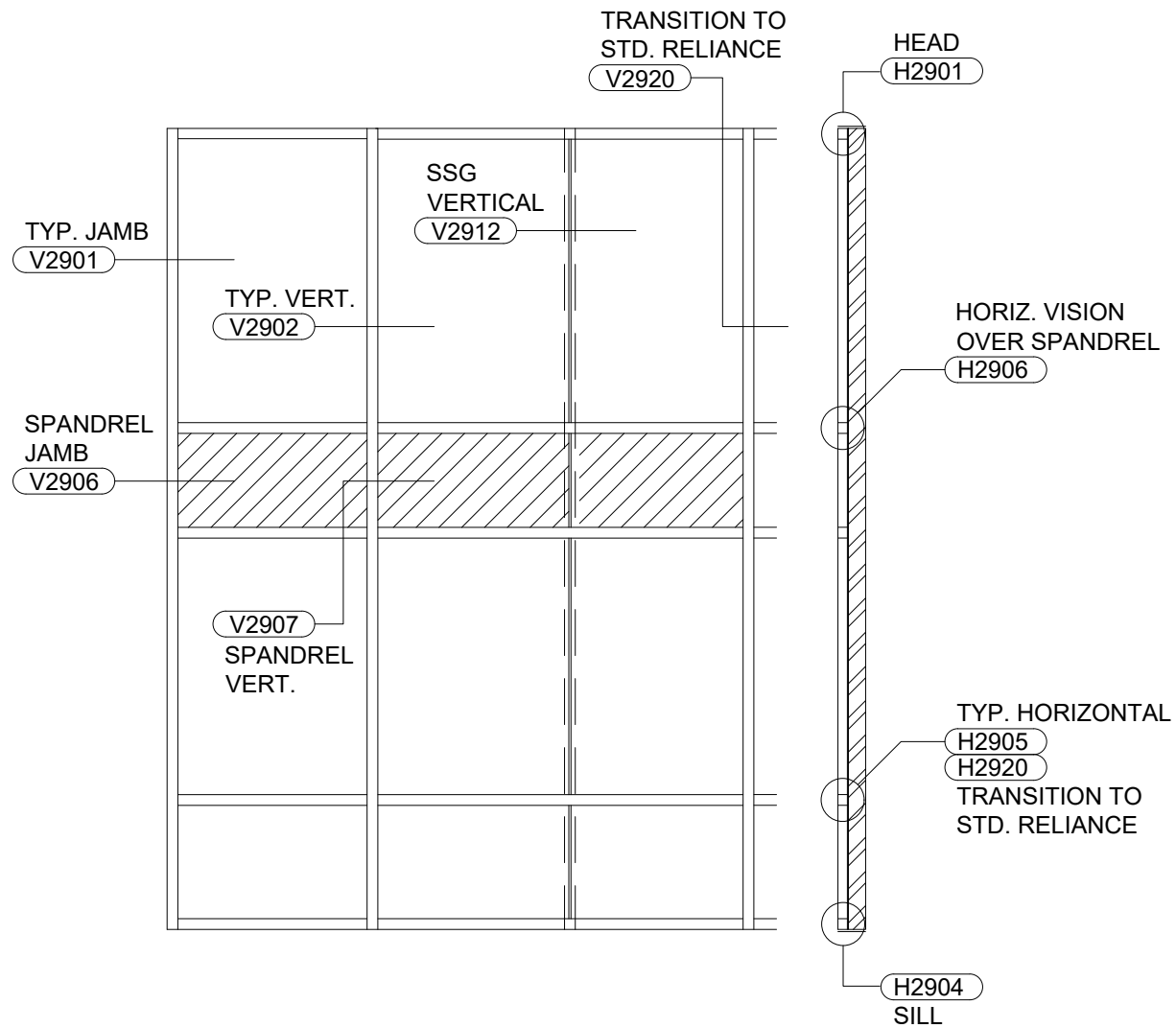
#### **Horizontal Details**

H2901	Head
H2904	Sill
H2905	Intermediate Horizontal
H2906	Intermediate Horizontal at Vision over Spandrel
H2920	Horizontal at Transition to Standard Reliance CW

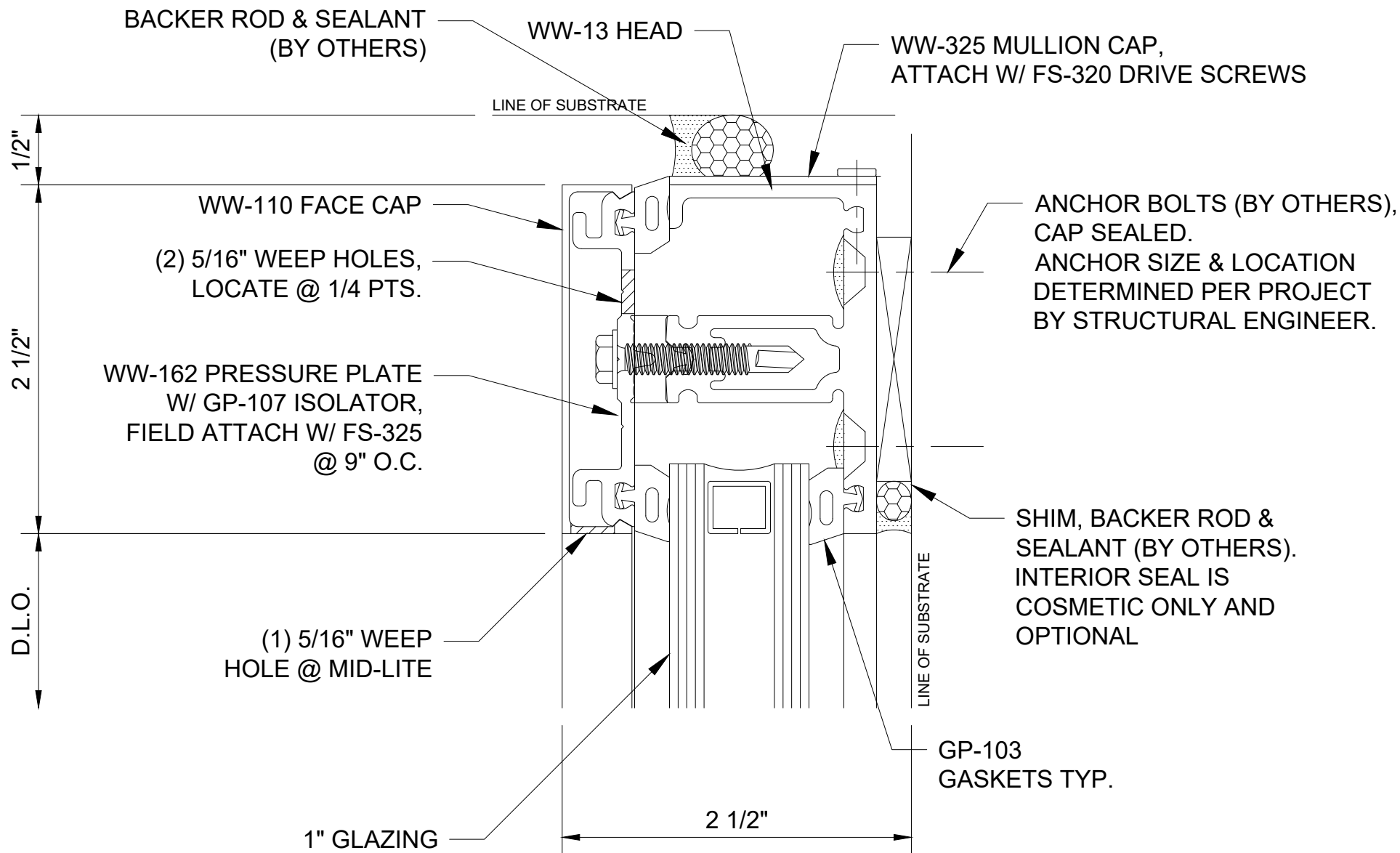
#### **Vertical Details**

V2901	Jamb
V2902	Intermediate Vertical
V2906	Jamb at Spandrel
V2907	Intermediate Vertical at Spandrel
V2912	SSG Vertical
V2920	Vertical at Transition to Reliance CW

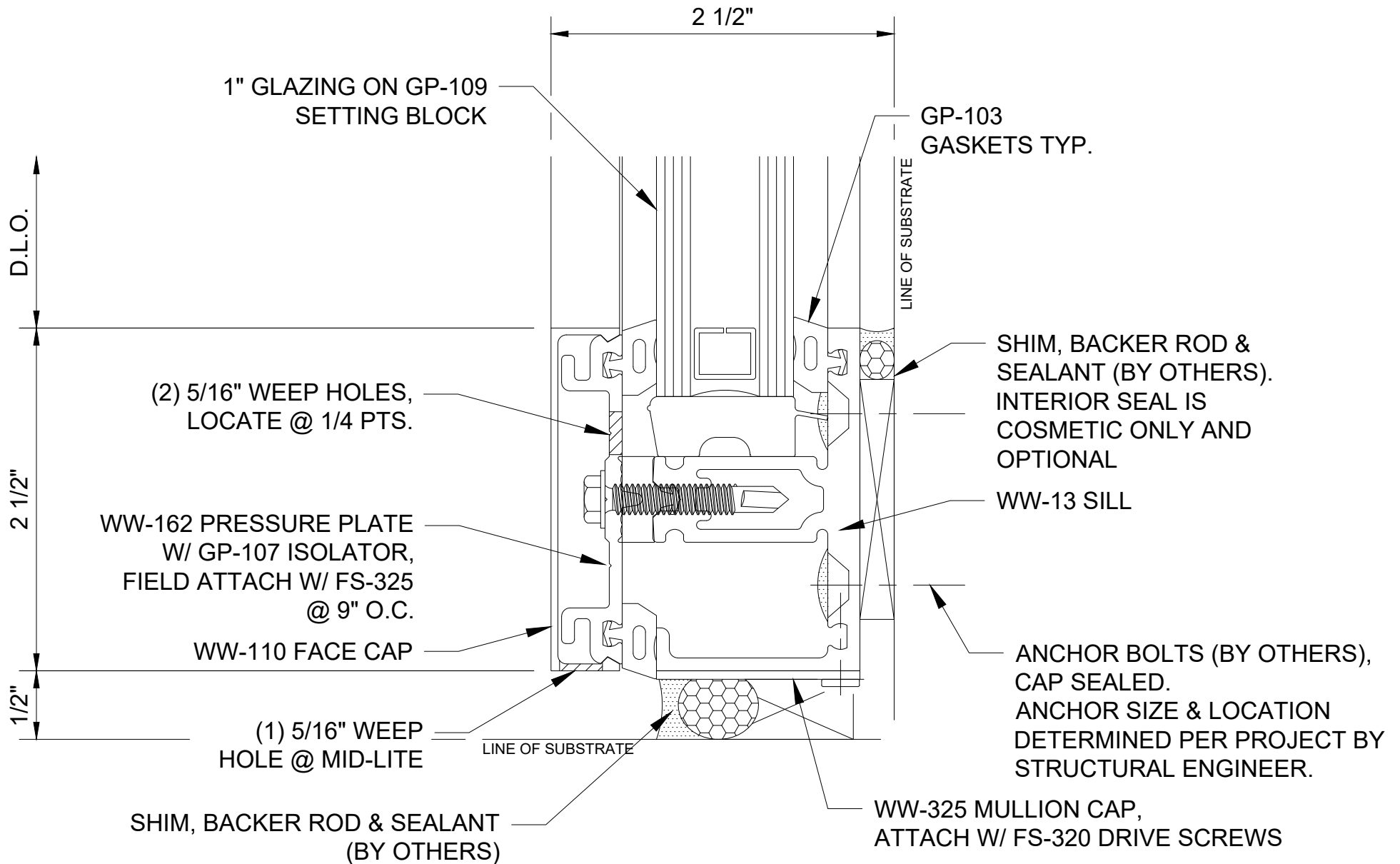
## Table of Contents



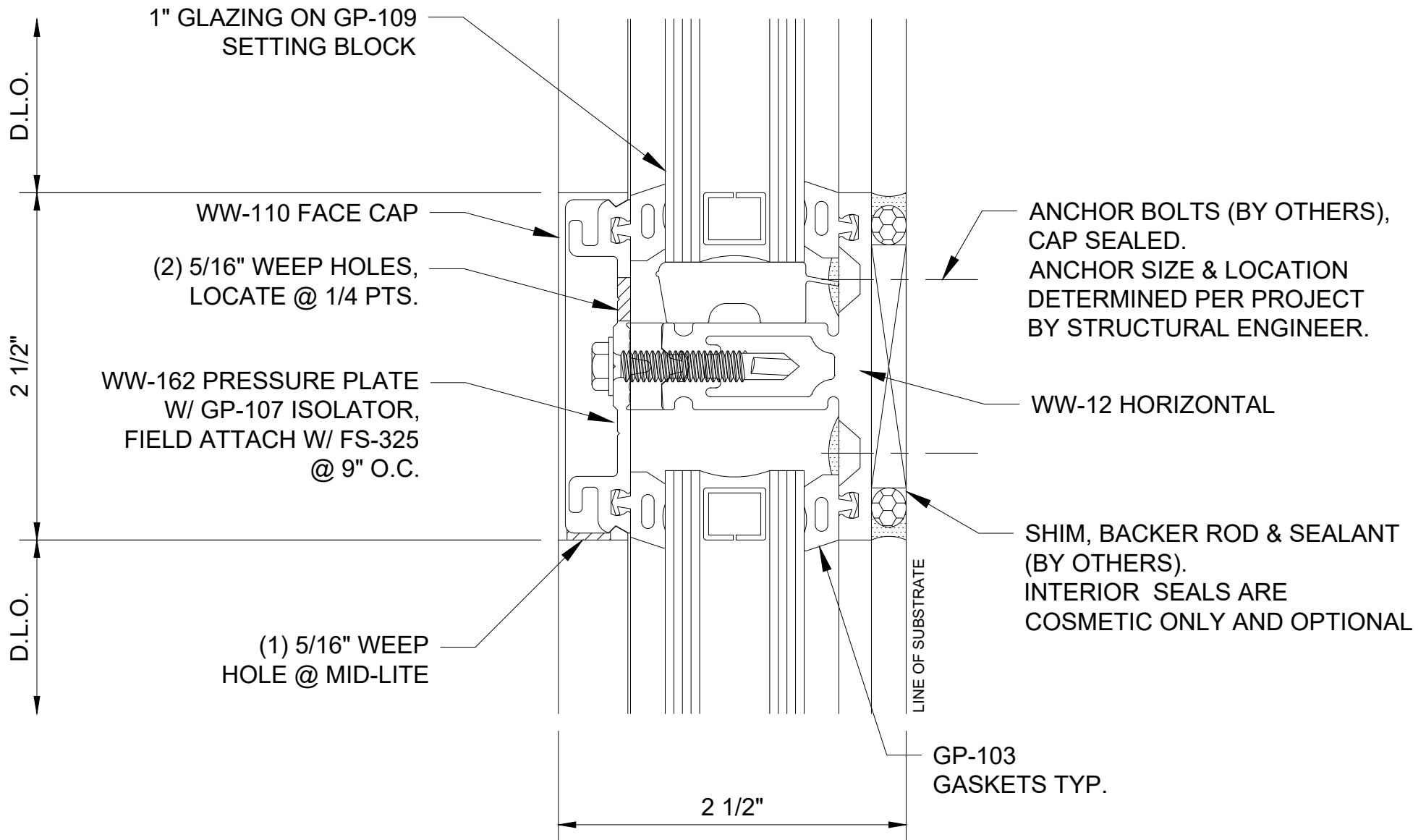
## Reliance™ Veneer System 2-1/2" Sightline w/ 1" Typical Infill - Elevation



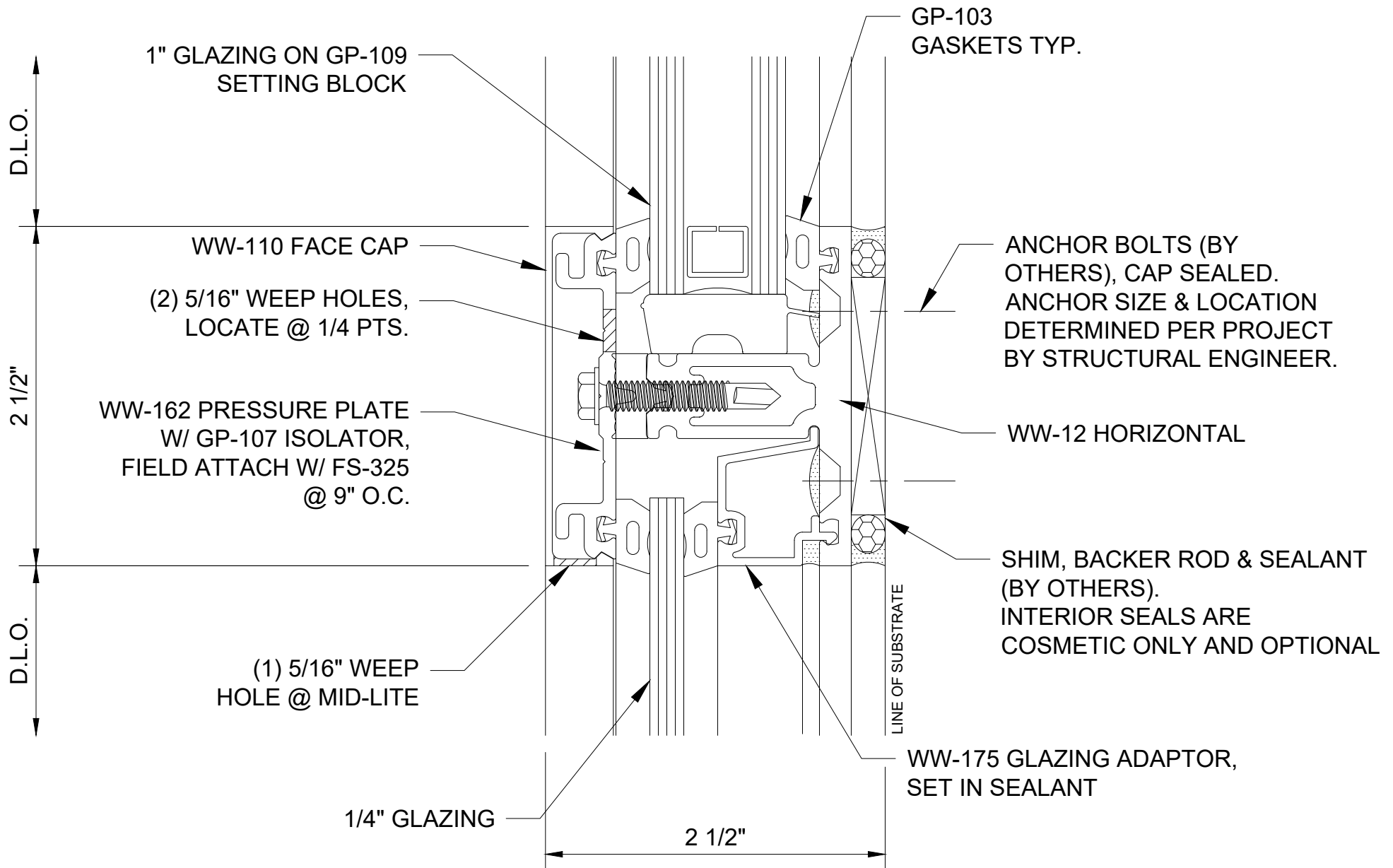
## Reliance™ Veneer System Head - H2901



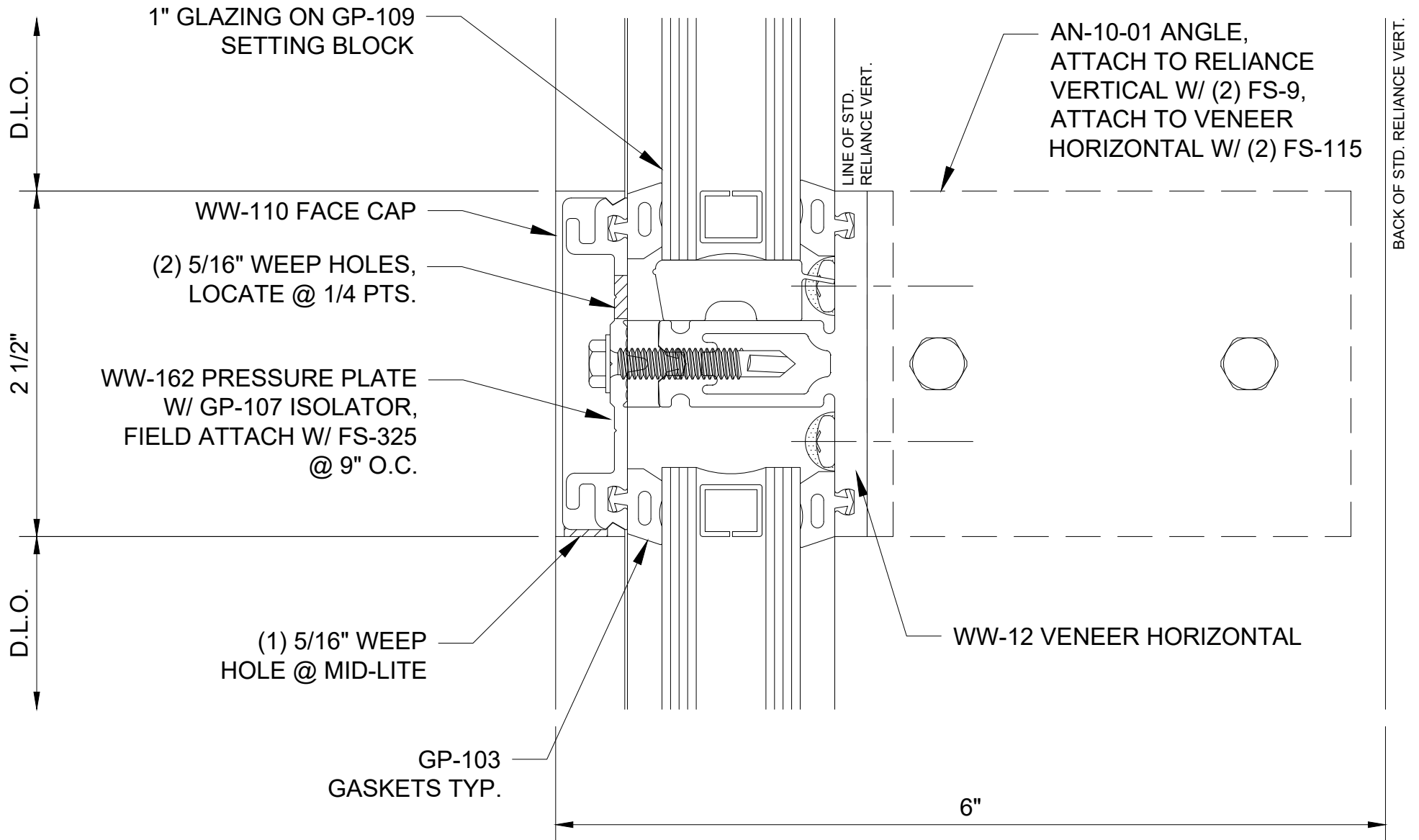
## Reliance™ Veneer System Sill - H2904



## Reliance™ Veneer System Intermediate Horizontal - H2905

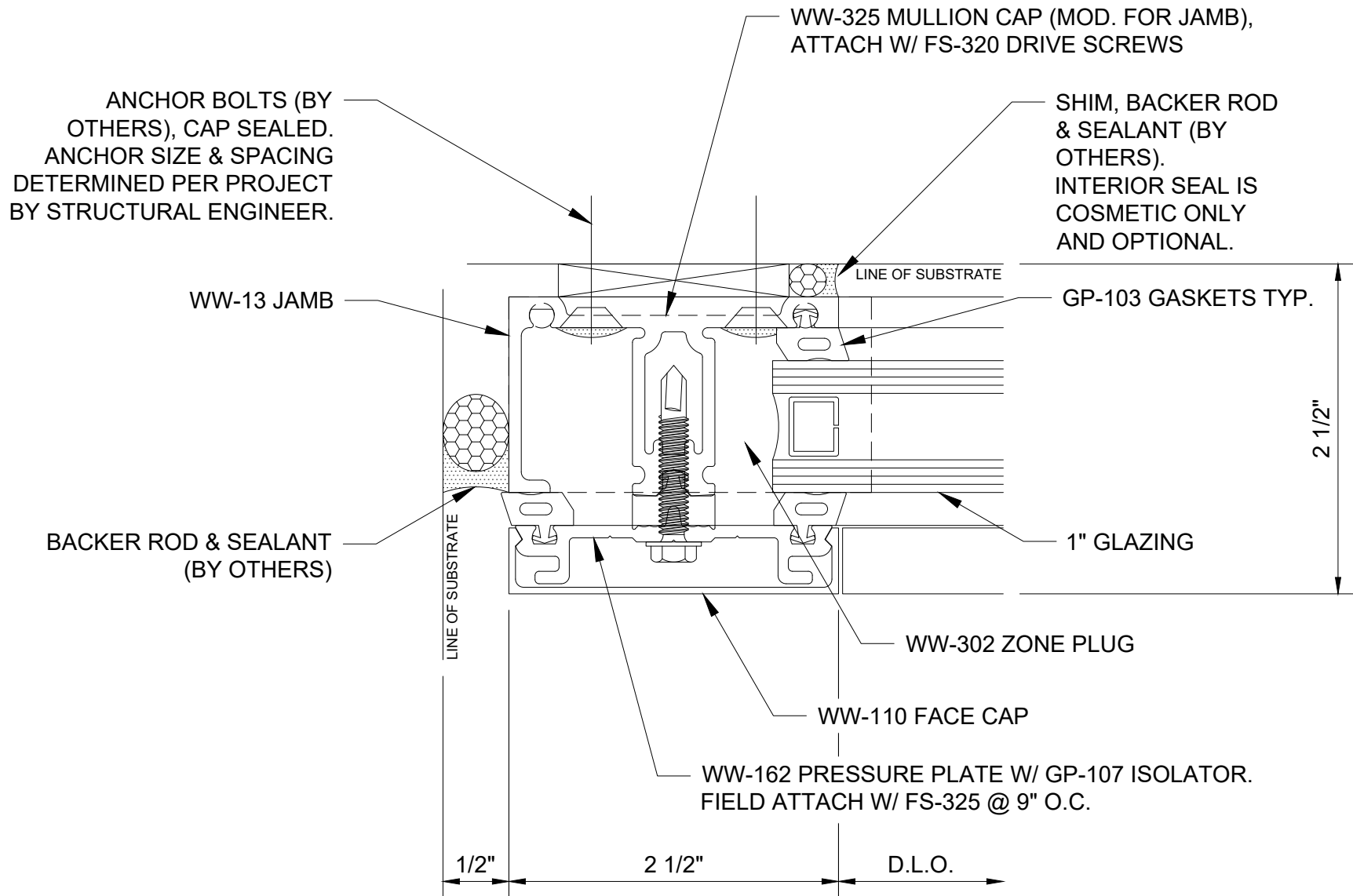


## Reliance™ Veneer System Horizontal at Vision over Spandrel - H2906



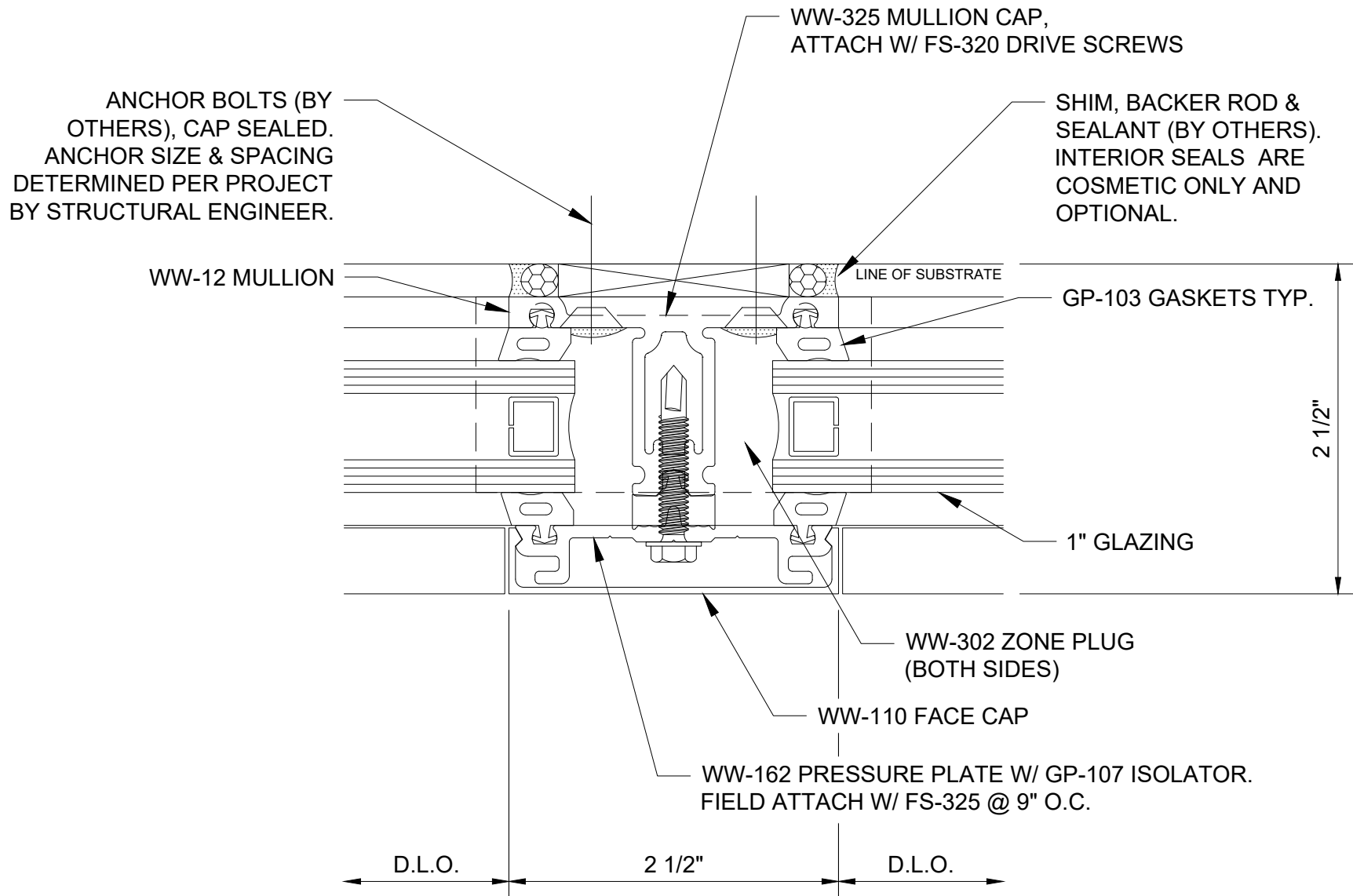
## Reliance™ Veneer System

### Horizontal at Transition to Standard Reliance Curtain Wall - H2920

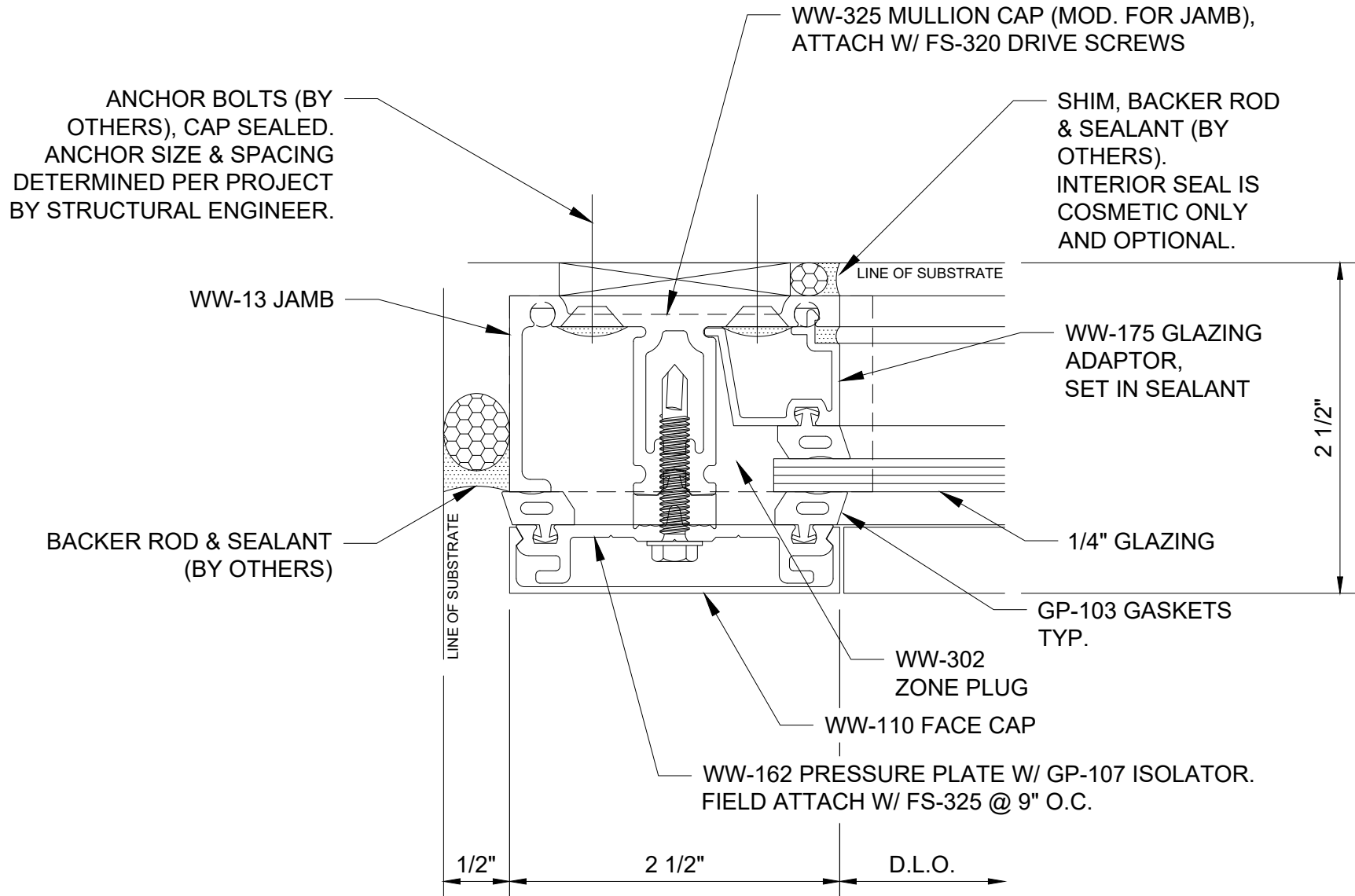


## Reliance™ Veneer System Jamb - V2901

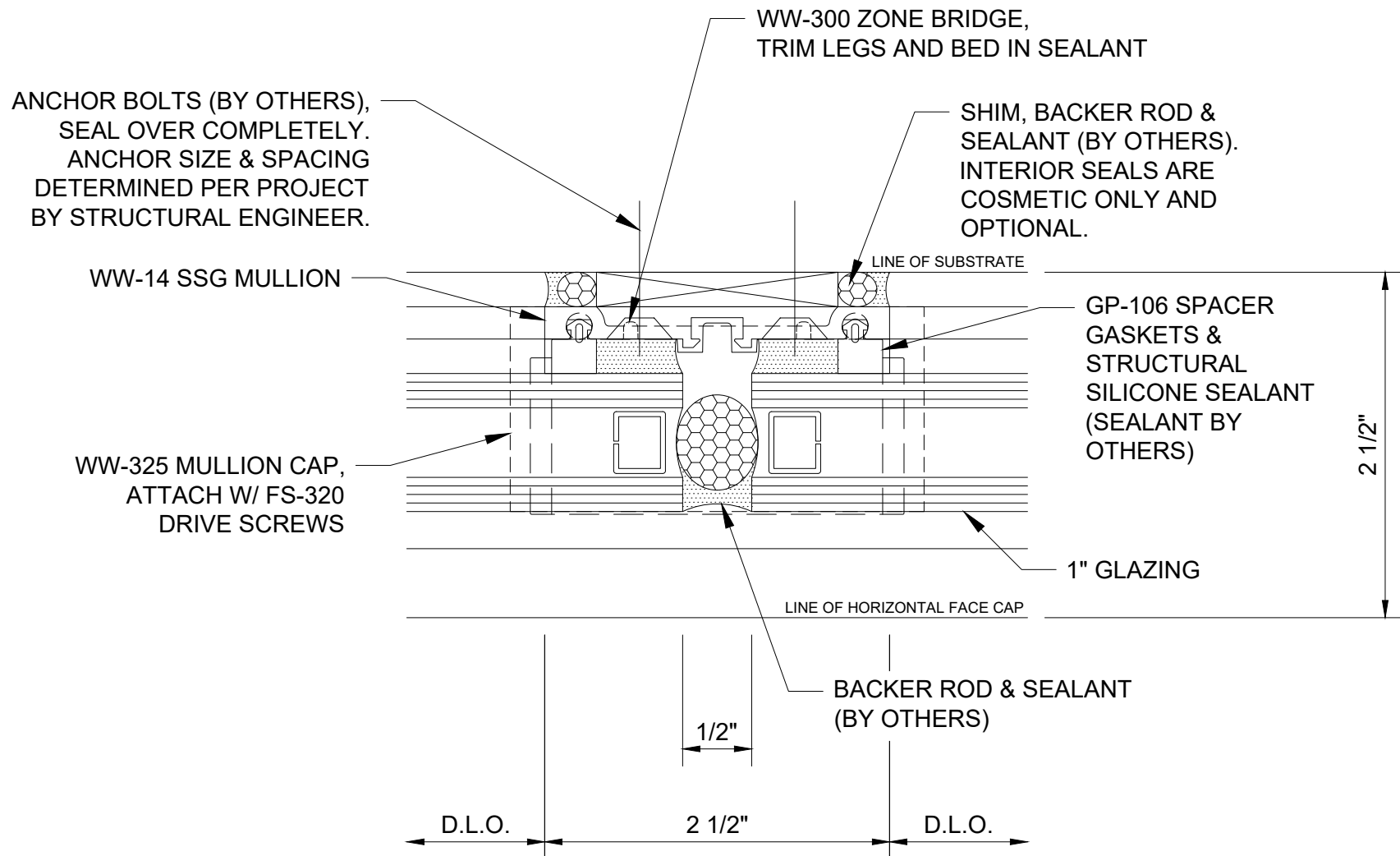




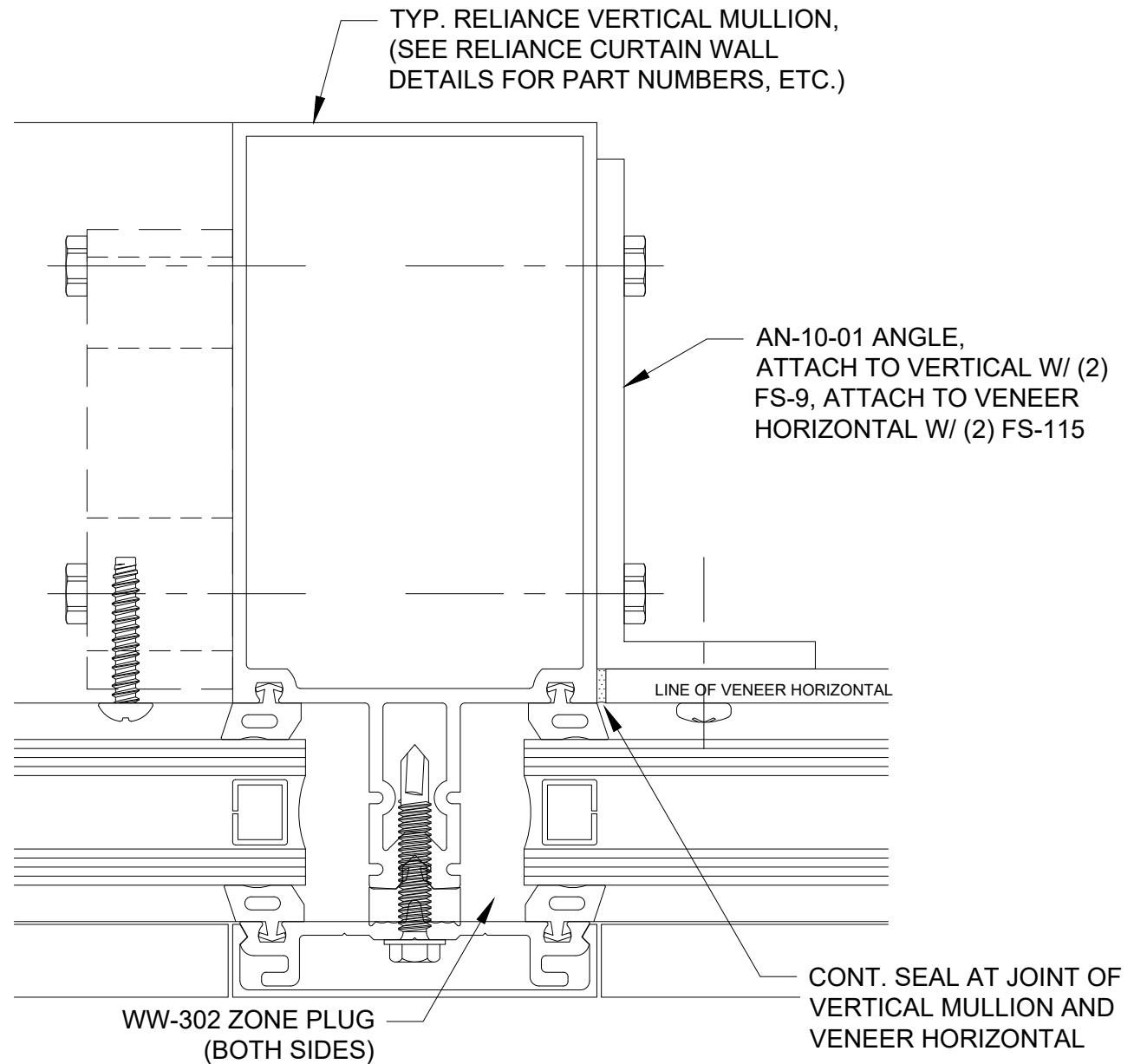
## Reliance™ Veneer System Typical Vertical - V2902



## Reliance™ Veneer System Jamb at Spandrel - V2906



## Reliance™ Veneer System SSG Vertical - V2912



## Reliance™ Veneer System

### Vertical at Transition to Standard Reliance Curtain Wall - V2920