

Oldcastle BuildingEnvelope®

1-866-Oldcastle (653-2278) - www.obe.com

Reliance™ Veneer Curtain Wall 2-1/2" Sightline w/ 1/4" Typical Infill

(Drawing numbers---i.e., H2931---used as CAD detail reference only)

Elevation

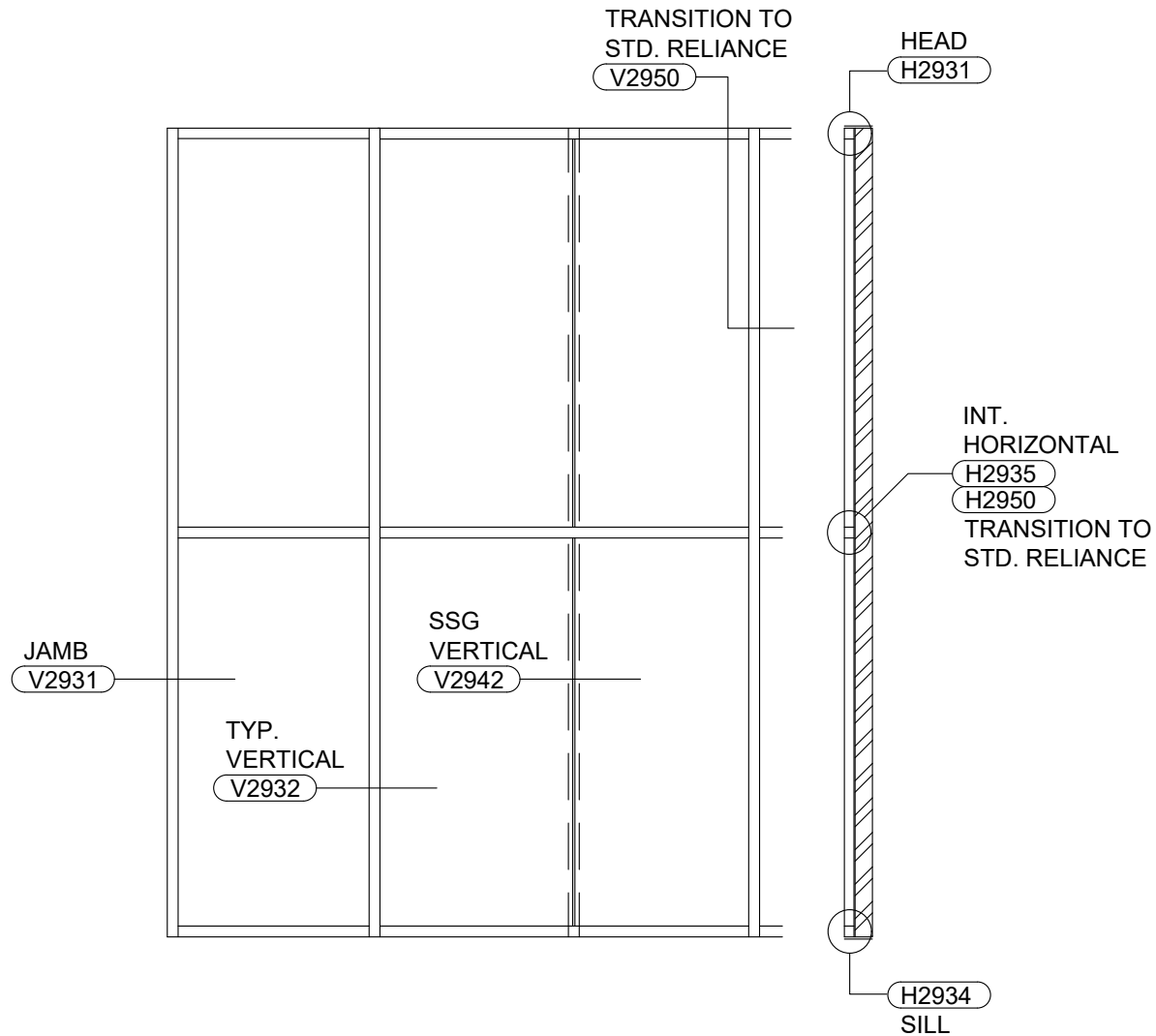
Horizontal Details

H2931	Head
H2934	Sill
H2935	Intermediate Horizontal
H2950	Horizontal at Transition to Standard Reliance CW

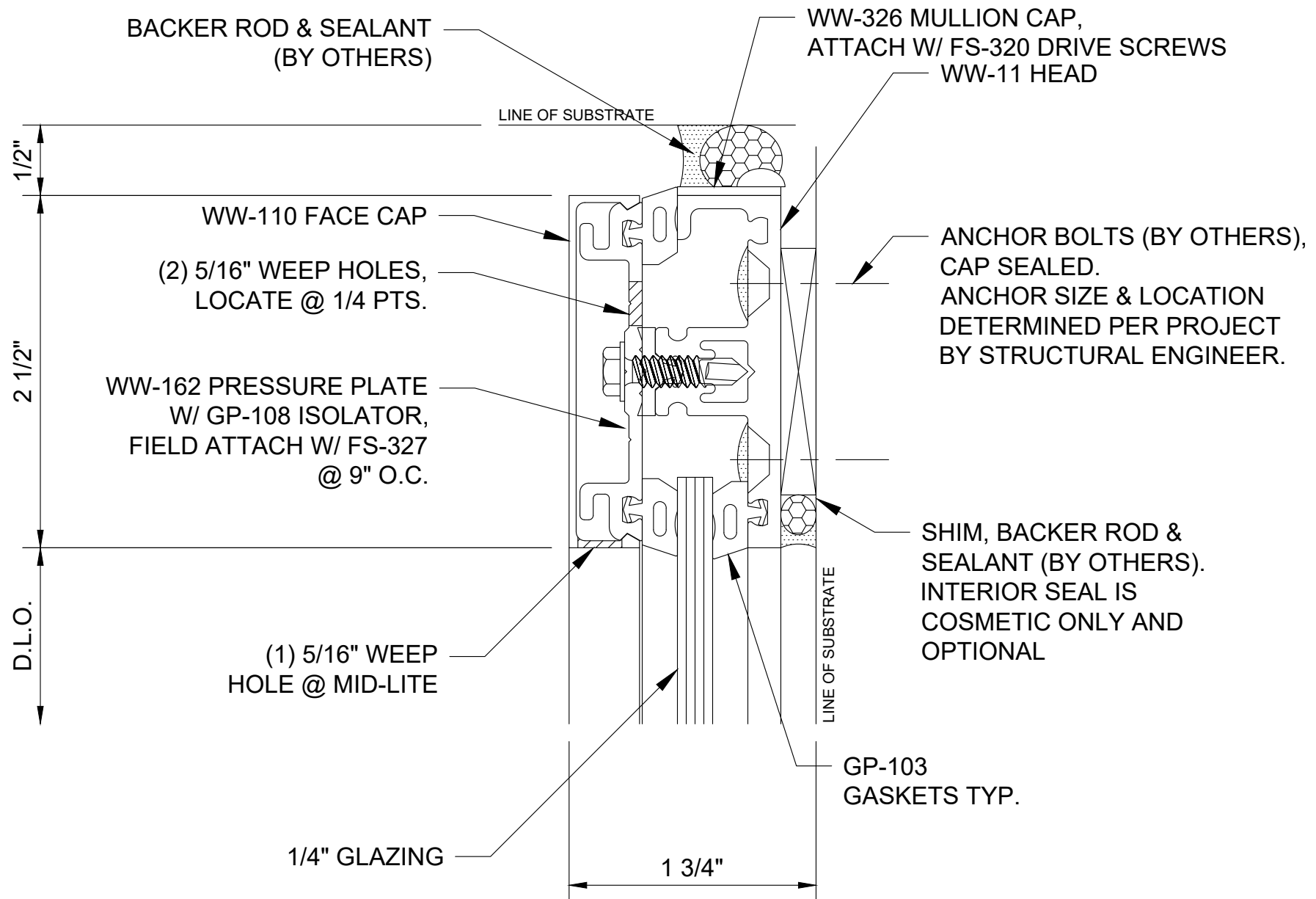
Vertical Details

V2931	Jamb
V2932	Intermediate Vertical
V2942	SSG Vertical
V2950	Vertical at Transition to Standard Reliance CW

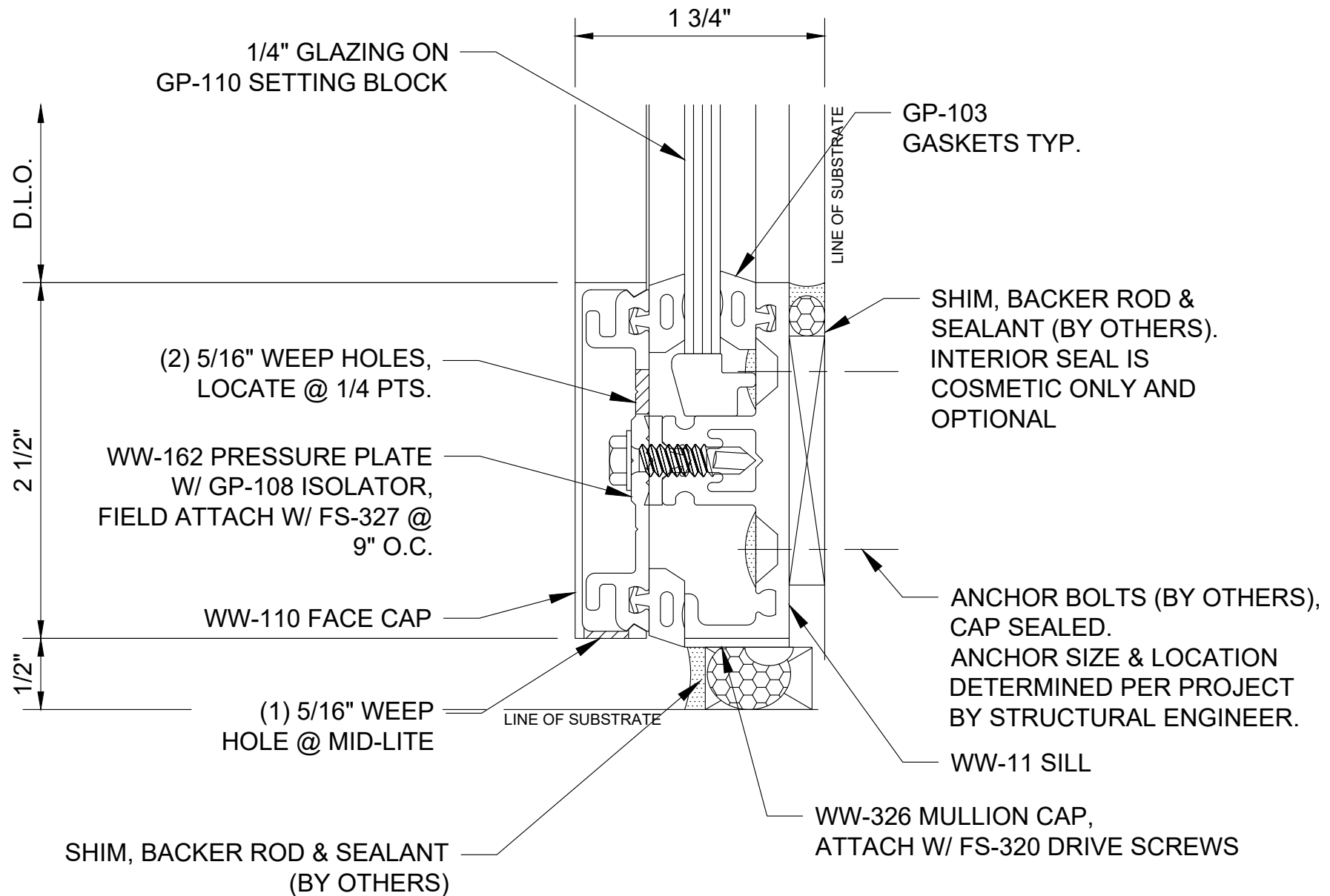
Table of Contents



Reliance™ Veneer System 2-1/2" Slightline w/ 1/4" Typical Infill - Elevation

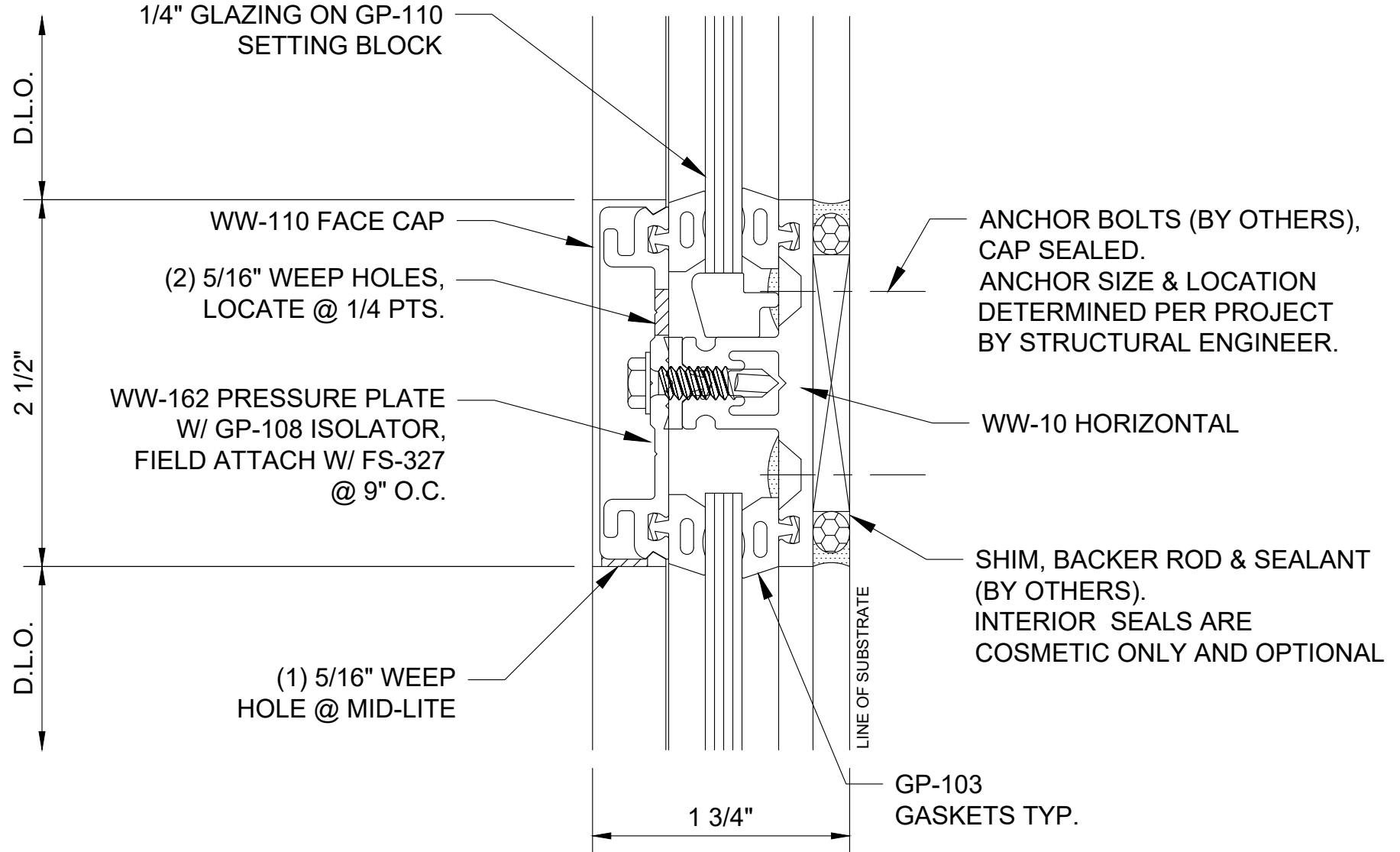


Reliance™ Veneer System Head - H2931

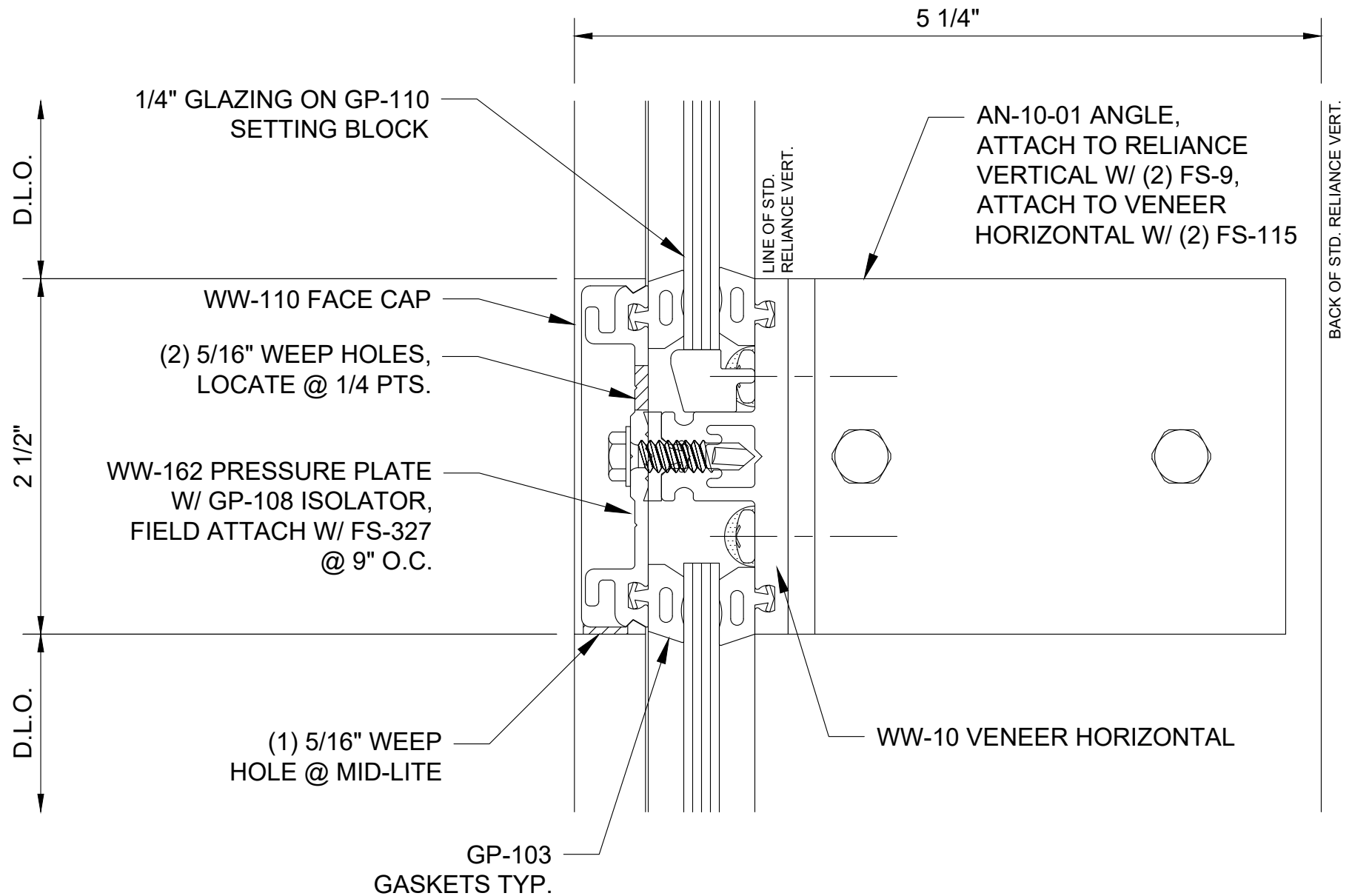


Reliance™ Veneer System

Sill - H2934

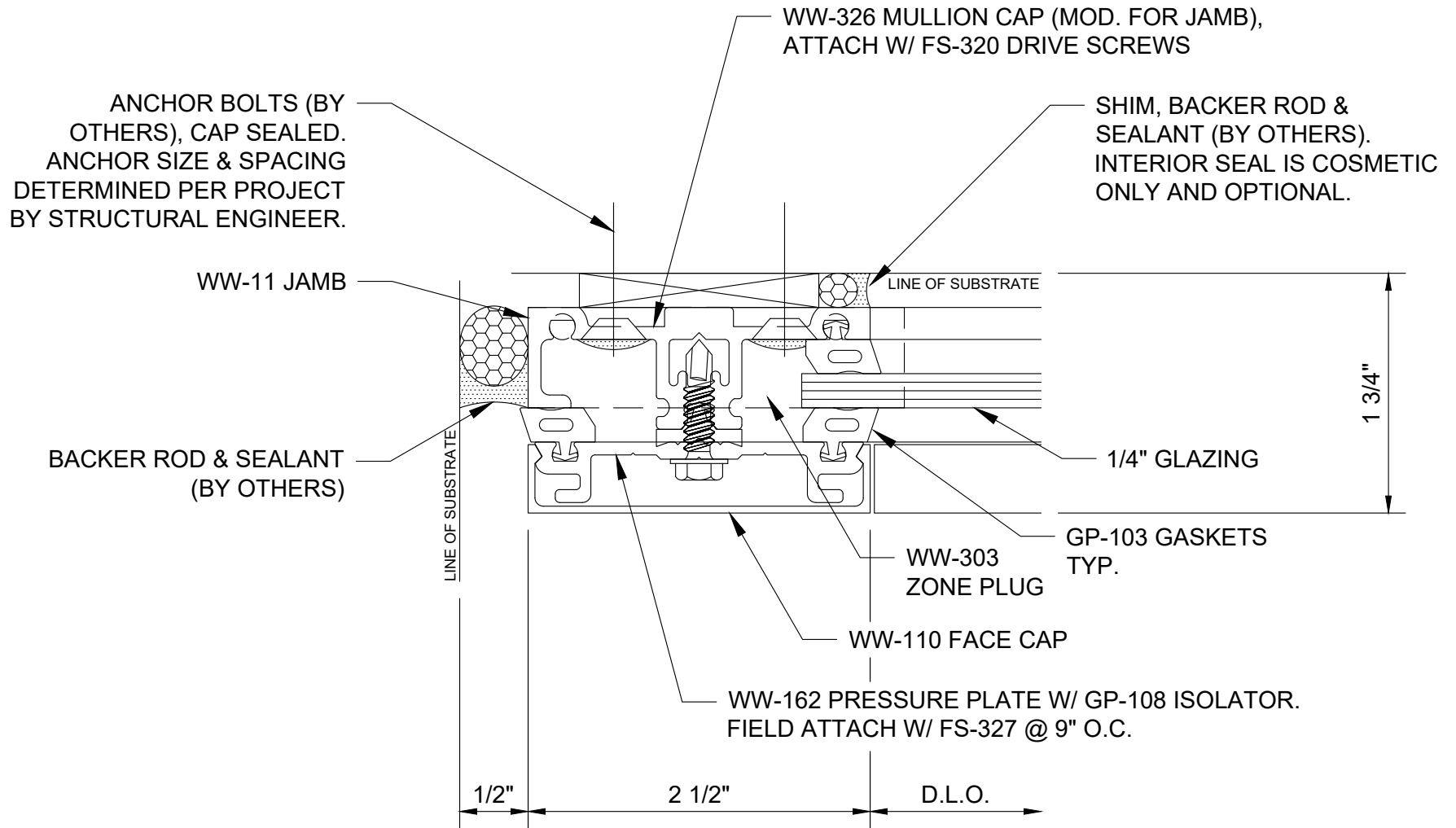


Reliance™ Veneer System Intermediate Horizontal - H2935

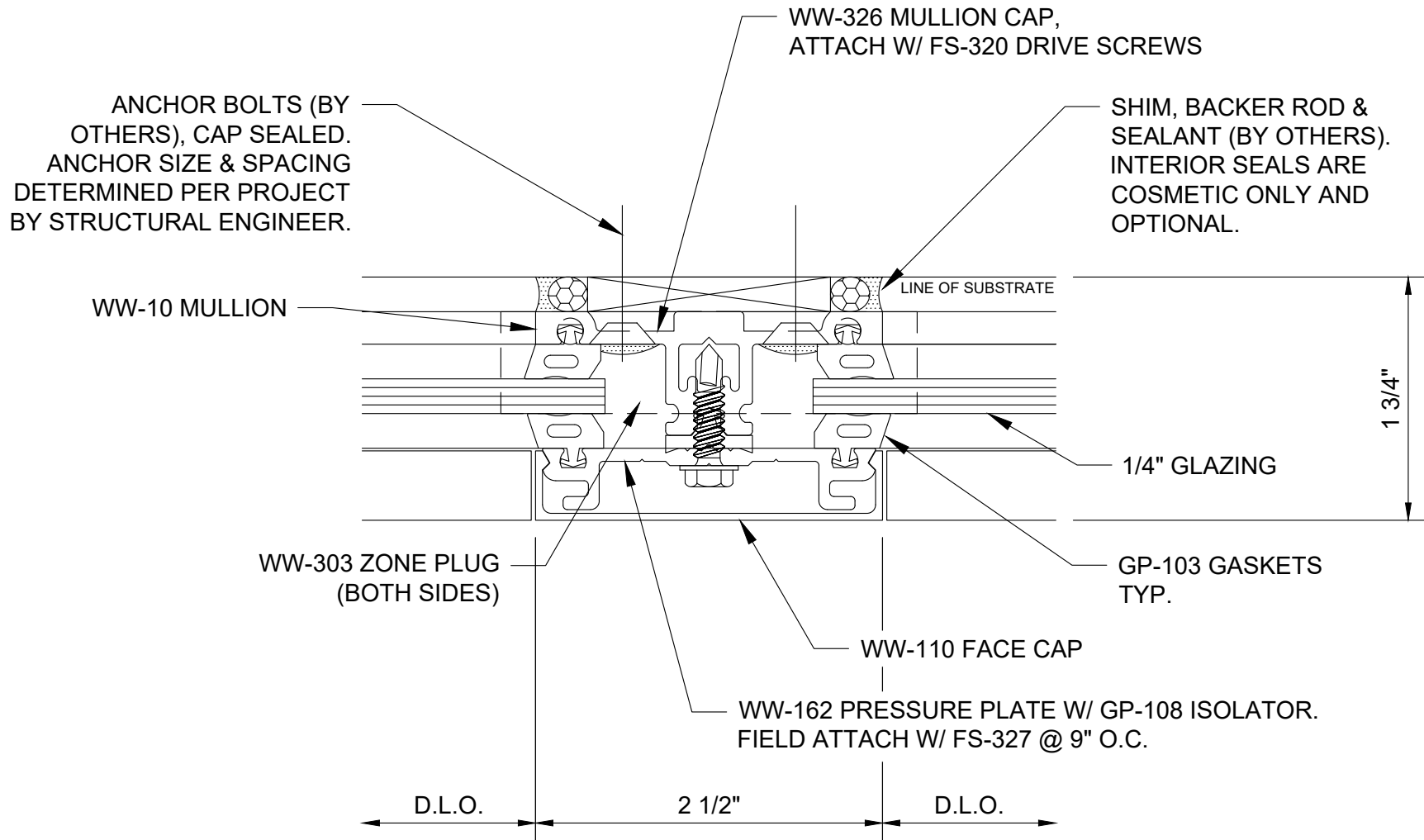


Reliance™ Veneer System

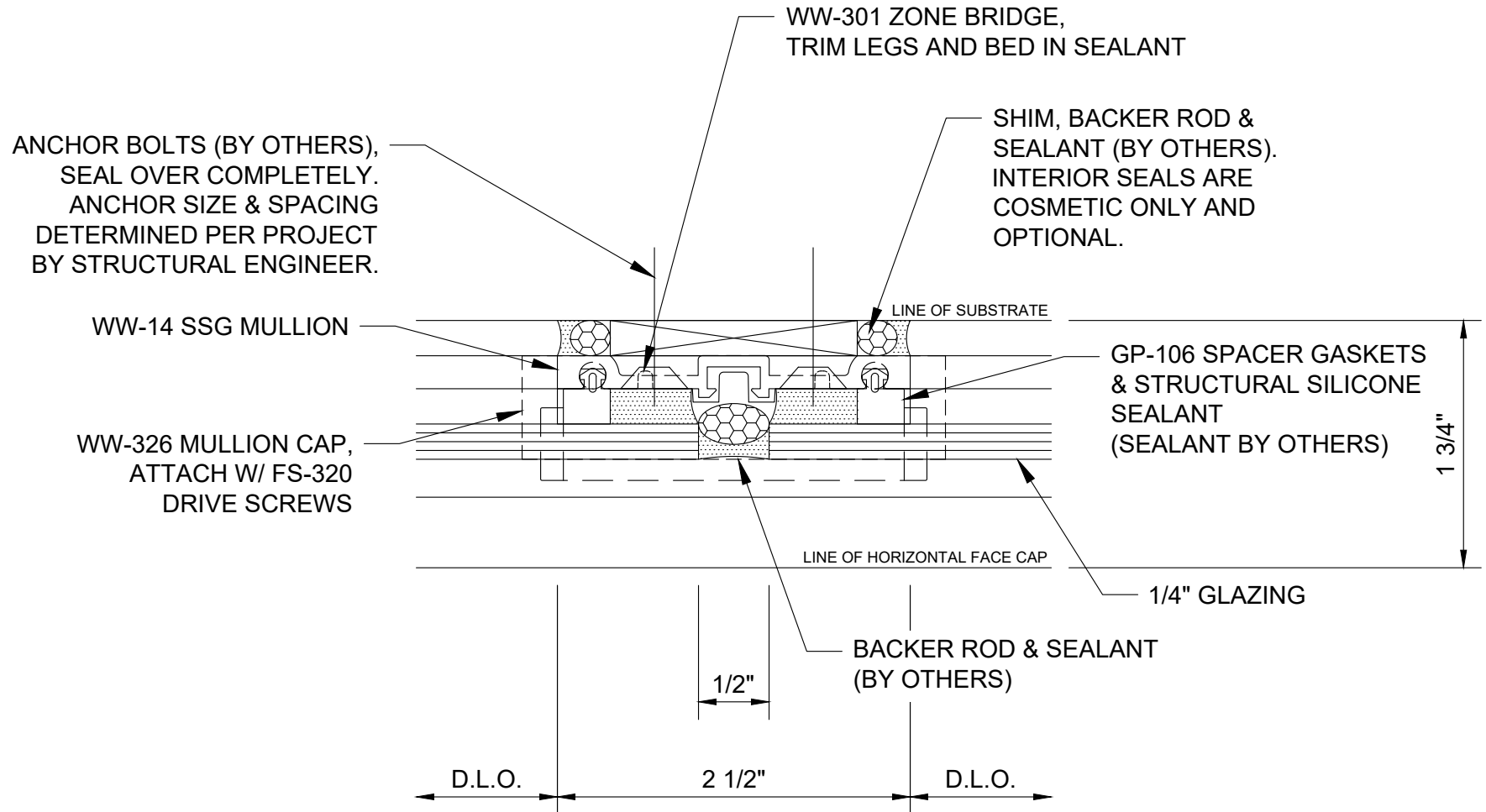
Horizontal at Transition to Standard Reliance Curtain Wall - H2950



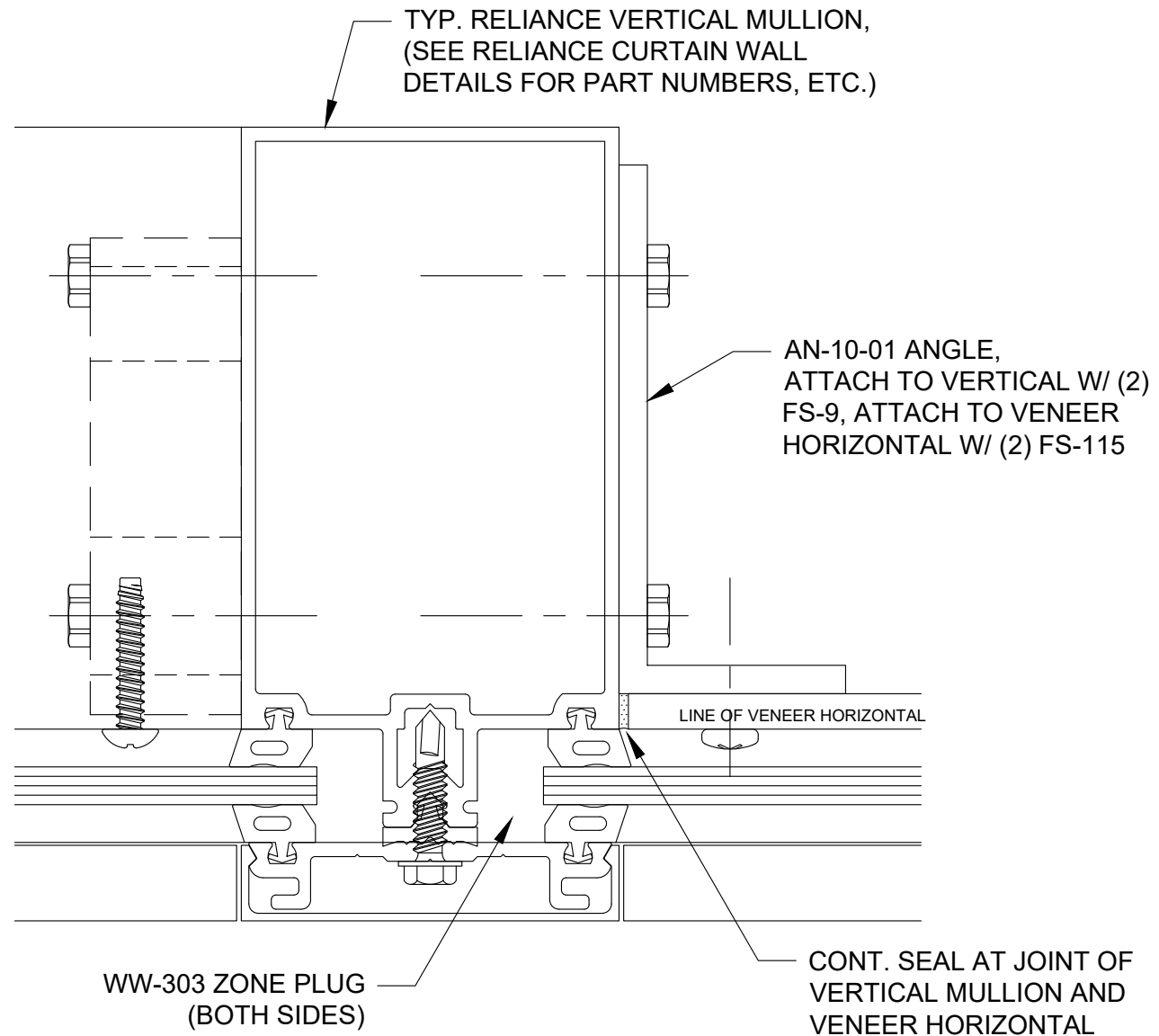
Reliance™ Veneer System Jamb - V2931



Reliance™ Veneer System Typical Vertical - V2932



Reliance™ Veneer System SSG Vertical - V2942



Reliance™ Veneer System

Vertical at Transition to Standard Reliance Curtain Wall - V2950