

Oldcastle BuildingEnvelope®

1-866-Oldcastle (653-2278) - www.obe.com

ThermaStack™ STOREFRONT 2" X 4-1/2" FRONT SET W/ 1" TYPICAL INFILL

(Drawing numbers---i.e., H2501---used as CAD detail reference only)

Elevation

Horizontal Details

| | |
|-------|--|
| H2501 | Head - Outside Glazed |
| H2503 | Head for 2-Sided SSG System |
| H2505 | Intermediate Horizontal - Outside Glazed |
| H2507 | Intermediate Horizontal for 2-Sided SSG System |
| H2508 | Sill - Outside Glazed and 2-Sided SSG Systems |
| H2512 | Head - Inside Glazed |
| H2515 | Intermediate Horizontal - Inside Glazed |
| H2518 | Sill - Inside Glazed |

Vertical Details

| | |
|-------|--------------------|
| V2501 | Jamb Option 1 |
| V2502 | Jamb Option 2 |
| V2505 | Typical Vertical |
| V2508 | Expansion Vertical |
| V2510 | SSG Vertical |

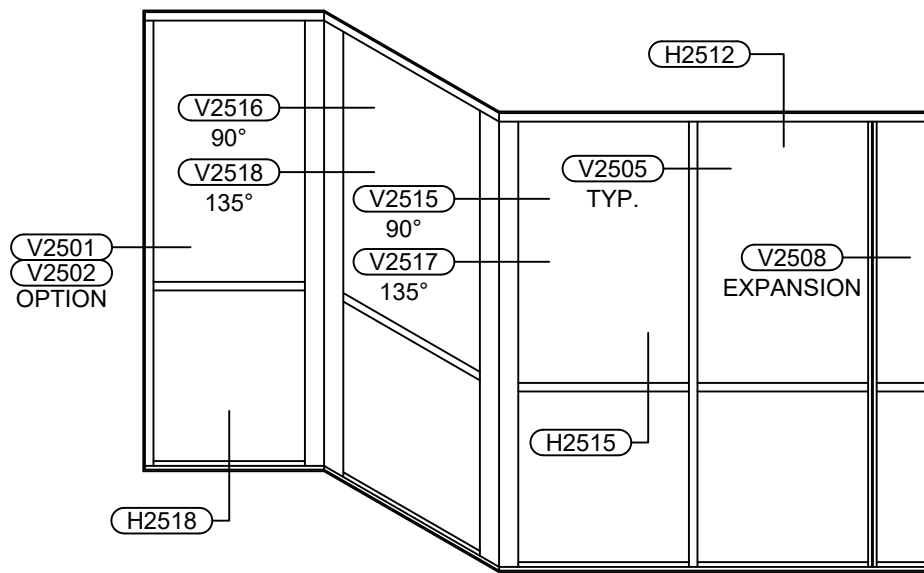
Corner Details

| | |
|-------|-------------------------|
| V2515 | 90° Outside Corner |
| V2516 | 90° Inside Corner |
| V2517 | 135° Outside Corner |
| V2518 | 135° Inside Corner |
| V2525 | SSG 90° Outside Corner |
| V2526 | SSG 90° Inside Corner |
| V2527 | SSG 135° Outside Corner |
| V2528 | SSG 135° Inside Corner |

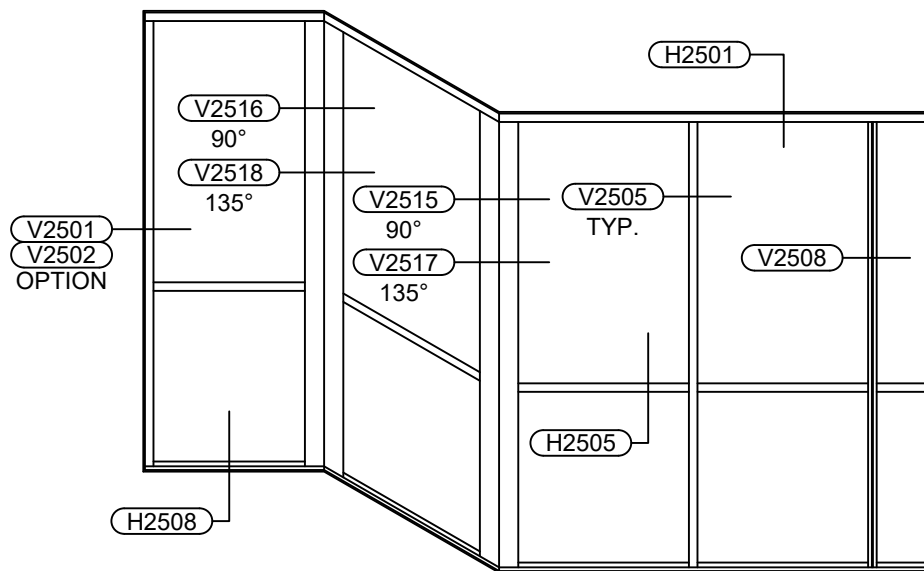
Misc. Details

| | |
|-------|-------------------------------------|
| M2501 | Steel Reinforcement |
| M2502 | Pocket Reducers & Alternate Gaskets |
| M2503 | SSG Corner Notes |
| M2504 | Angle Clips |

Table of Contents

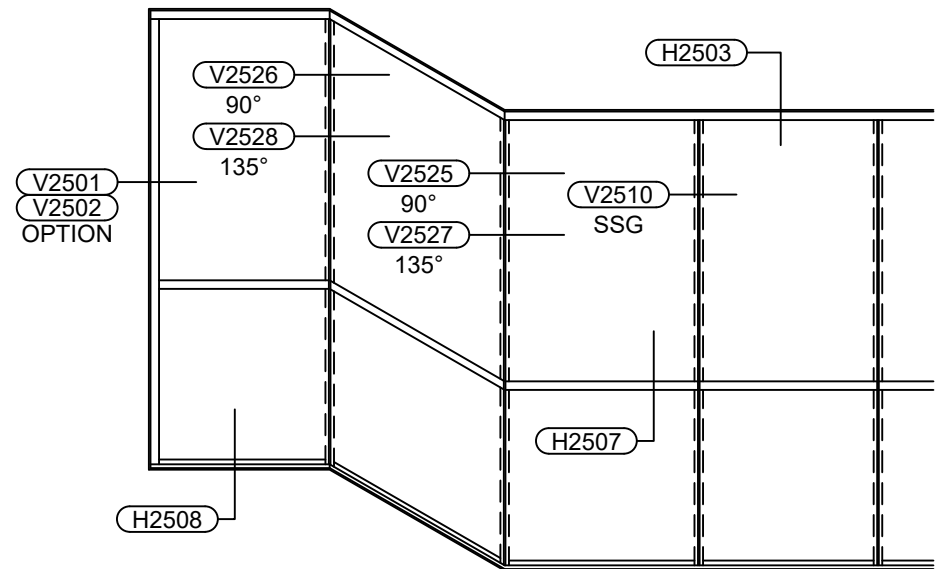


**FULLY CAPTURED SYSTEM
INSIDE GLAZED**



**FULLY CAPTURED SYSTEM
OUTSIDE GLAZED**

NOTE: FOR ENTRANCE FRAMING
OPTIONS, SEE PUBLISHED DETAILS
FOR THE NS-212 / MS-375 / WS-500
STANDARD ENTRANCE AND FRAME.



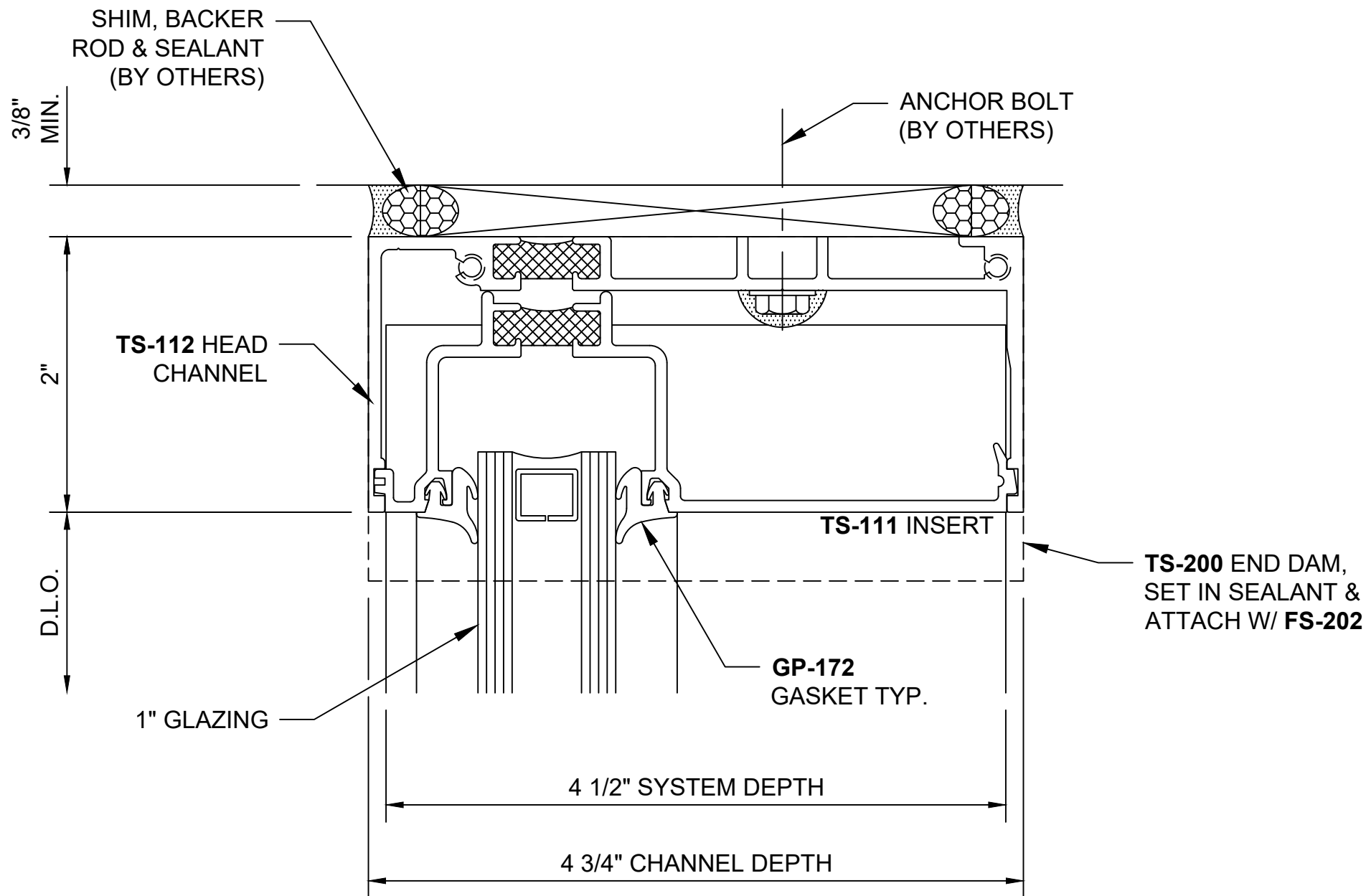
2-SIDED SSG SYSTEM

MISC. DETAILS

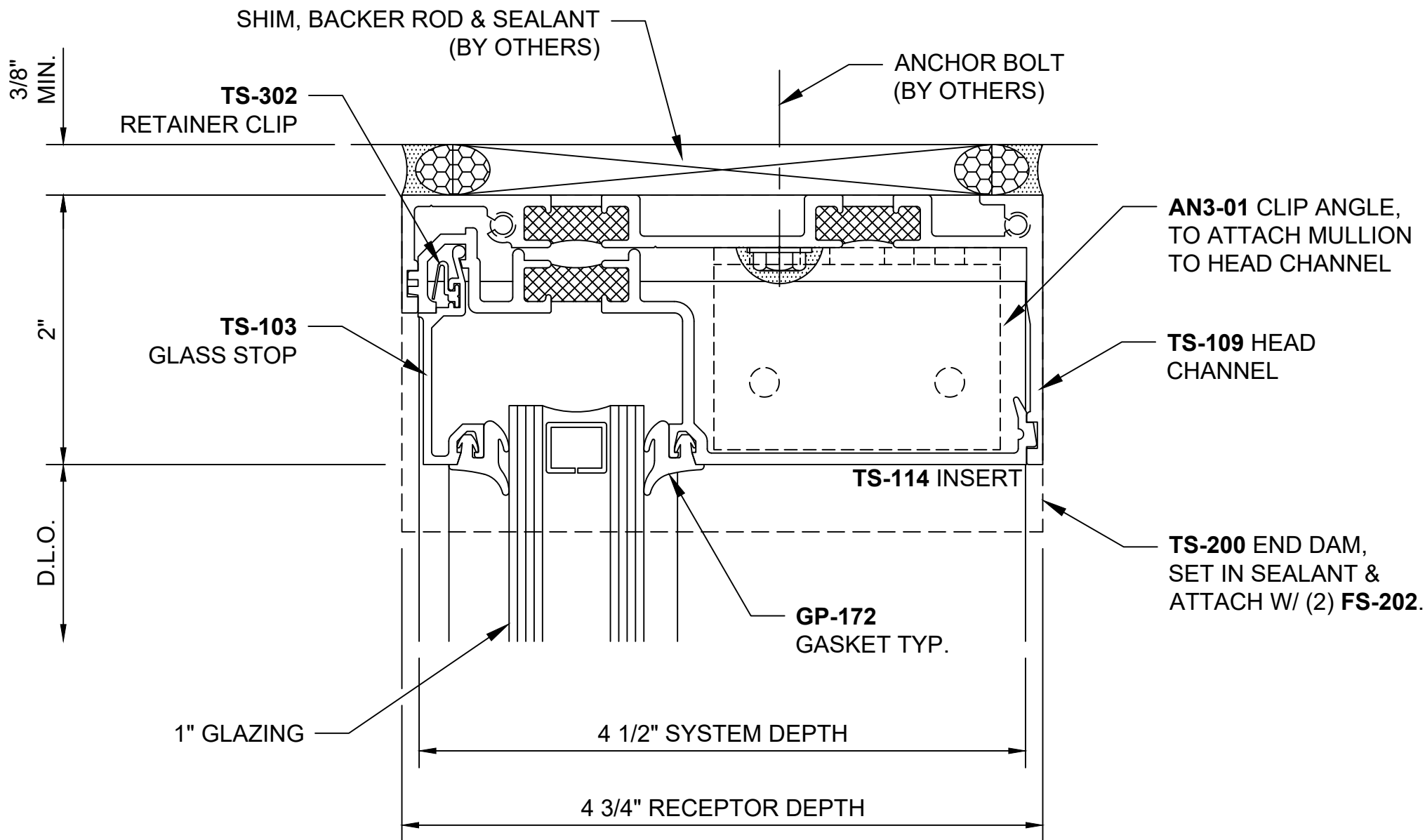
- (M2501) STEEL REINFORCEMENT
- (M2502) POCKET REDUCERS & ALTERNATE GASKETS
- (M2503) SSG CORNER NOTES
- (M2504) ANGLE CLIPS

ThermaStack™ Storefront

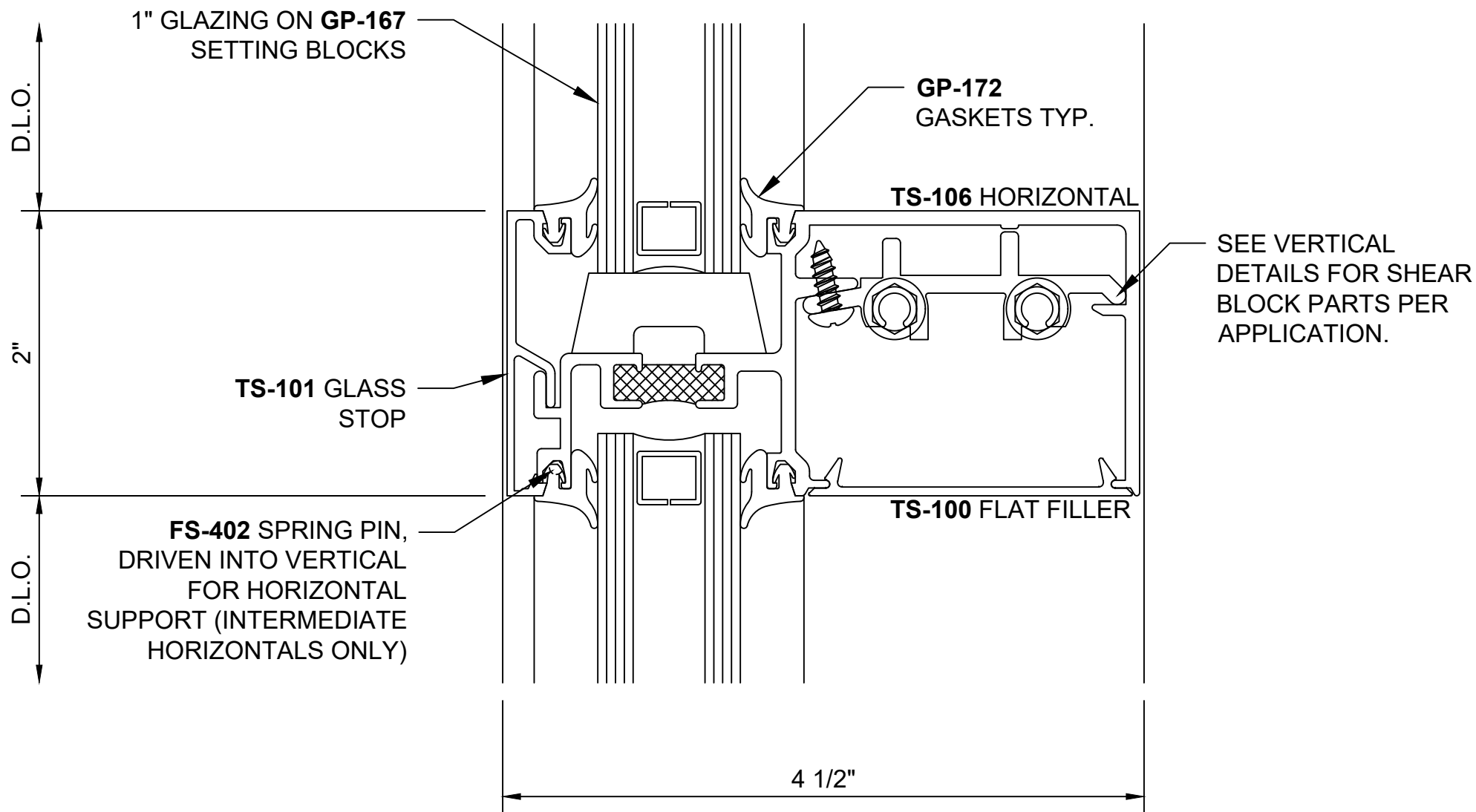
2" x 4-1/2" Thermally Broken Front Set Stacking Storefront w/ 1" Typical Infill - Elevation



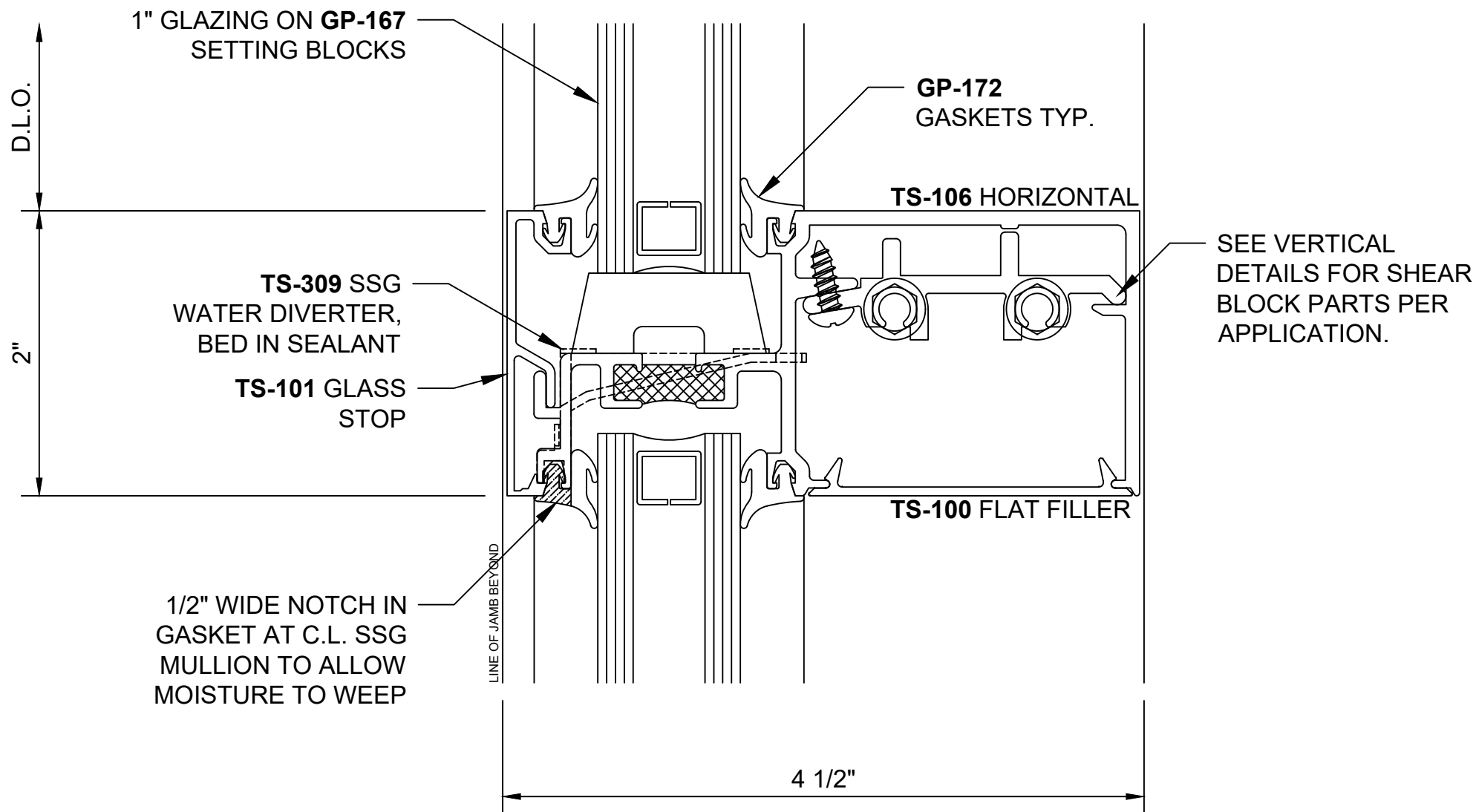
**ThermaStack™ Storefront
Head (Outside Glazed) - H2501**



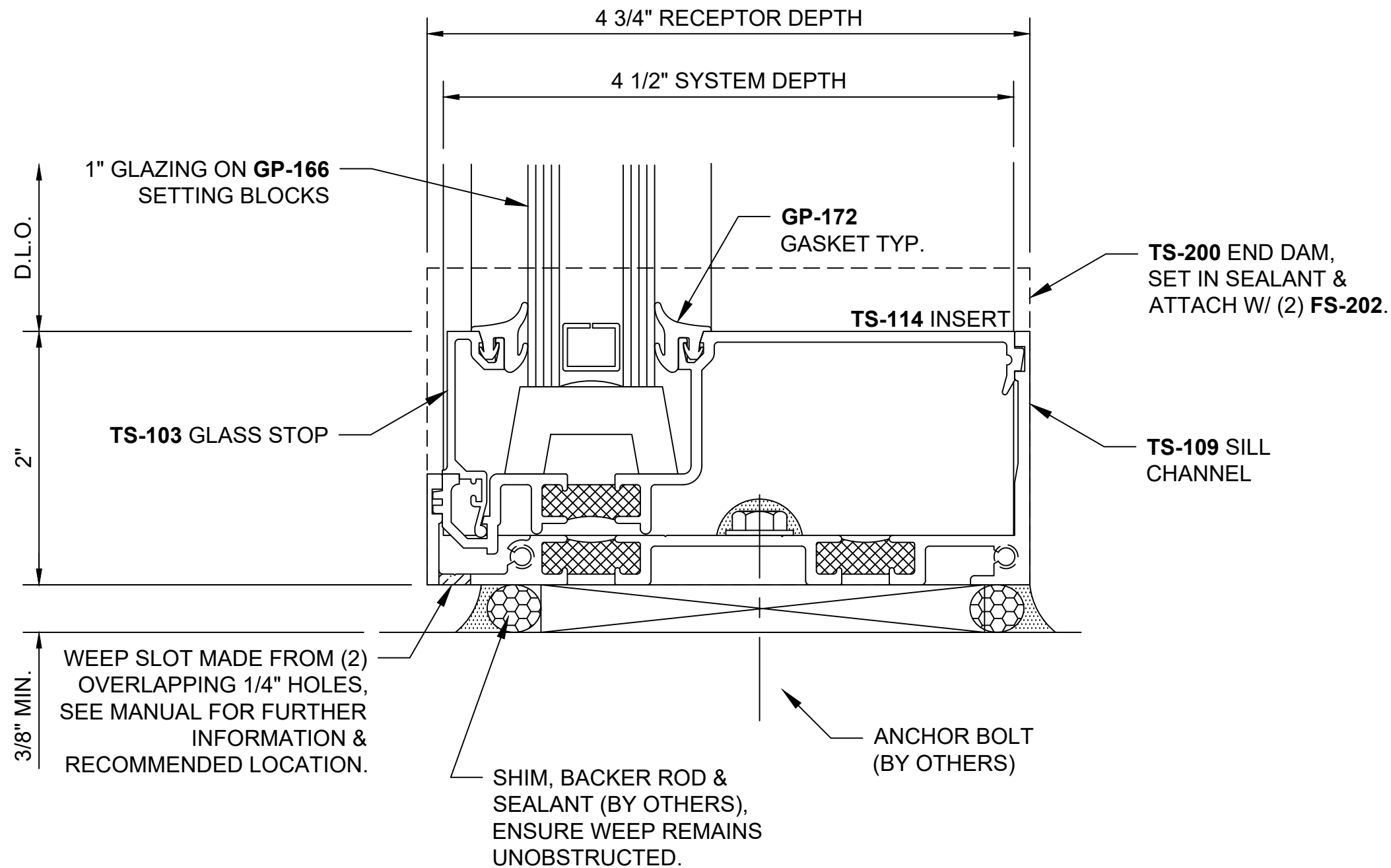
**ThermaStack™ Storefront
Head for 2-sided SSG System - H2503**



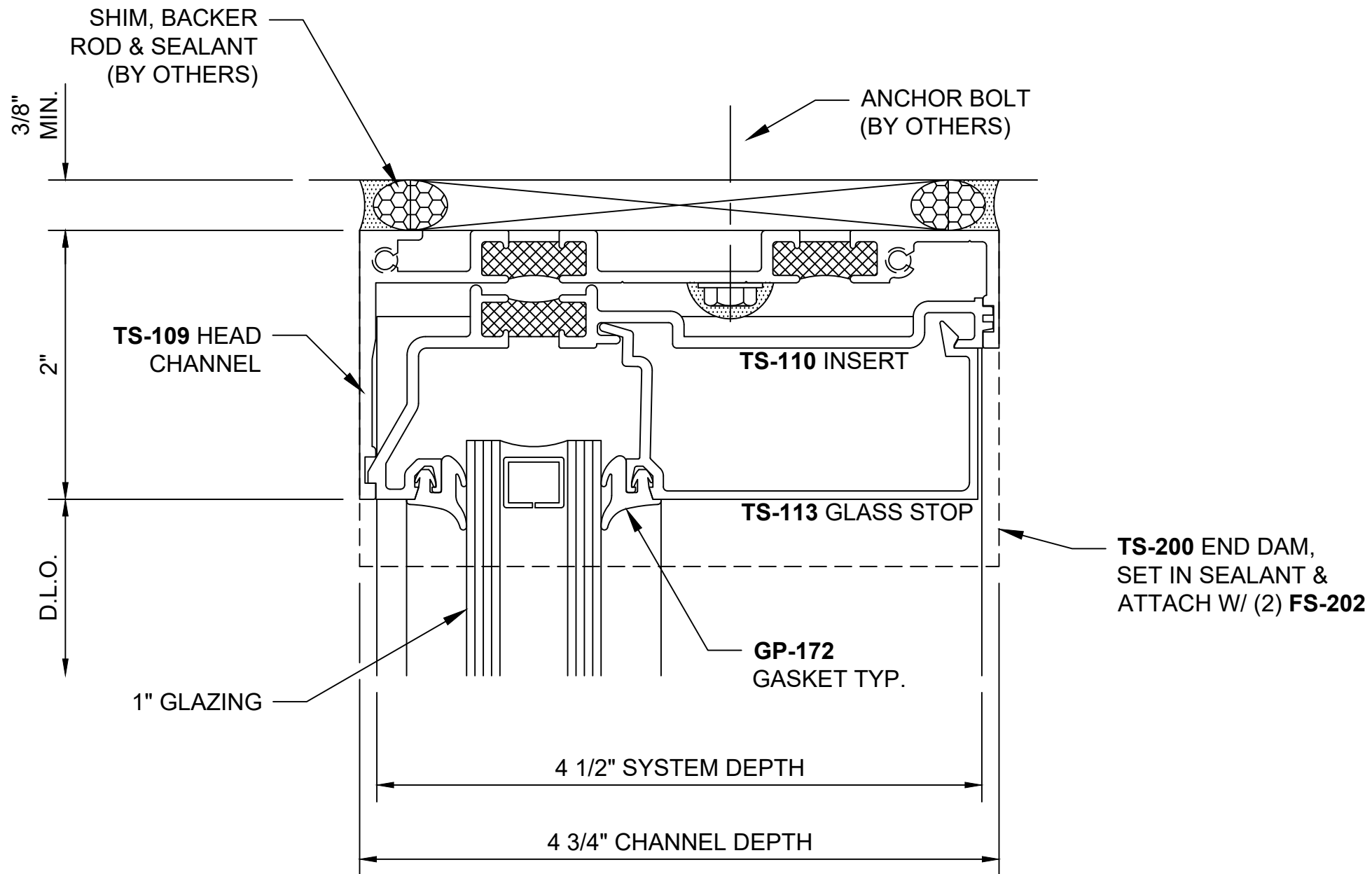
ThermaStack™ Storefront
Intermediate Horizontal (Outside Glazed) - H2505



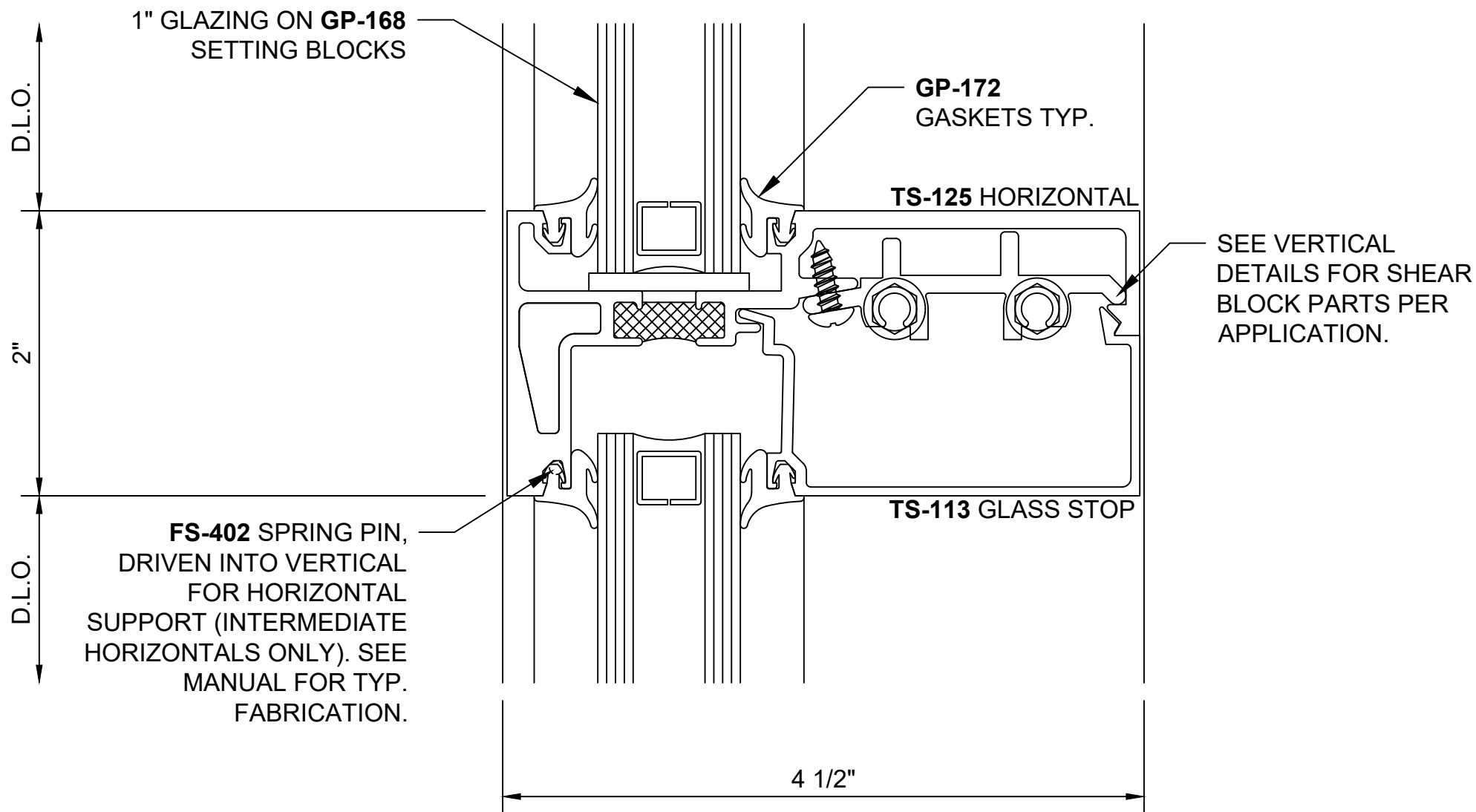
ThermaStack™ Storefront
Intermediate Horizontal for 2-Sided SSG System - H2507



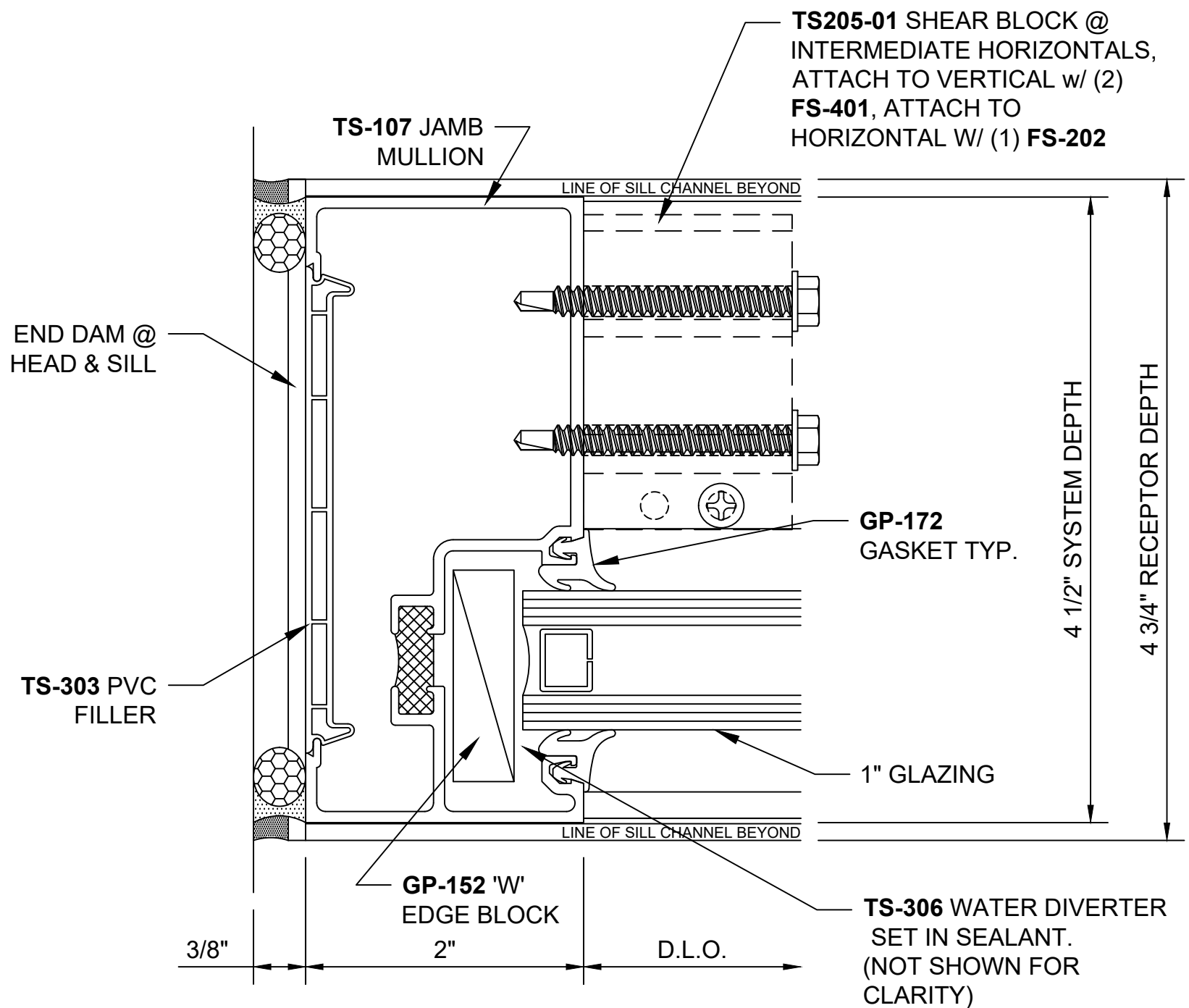
ThermaStack™ Storefront **Sill (Outside Glazed) - H2508**



**ThermaStack™ Storefront
Head (Inside Glazed) - H2512**

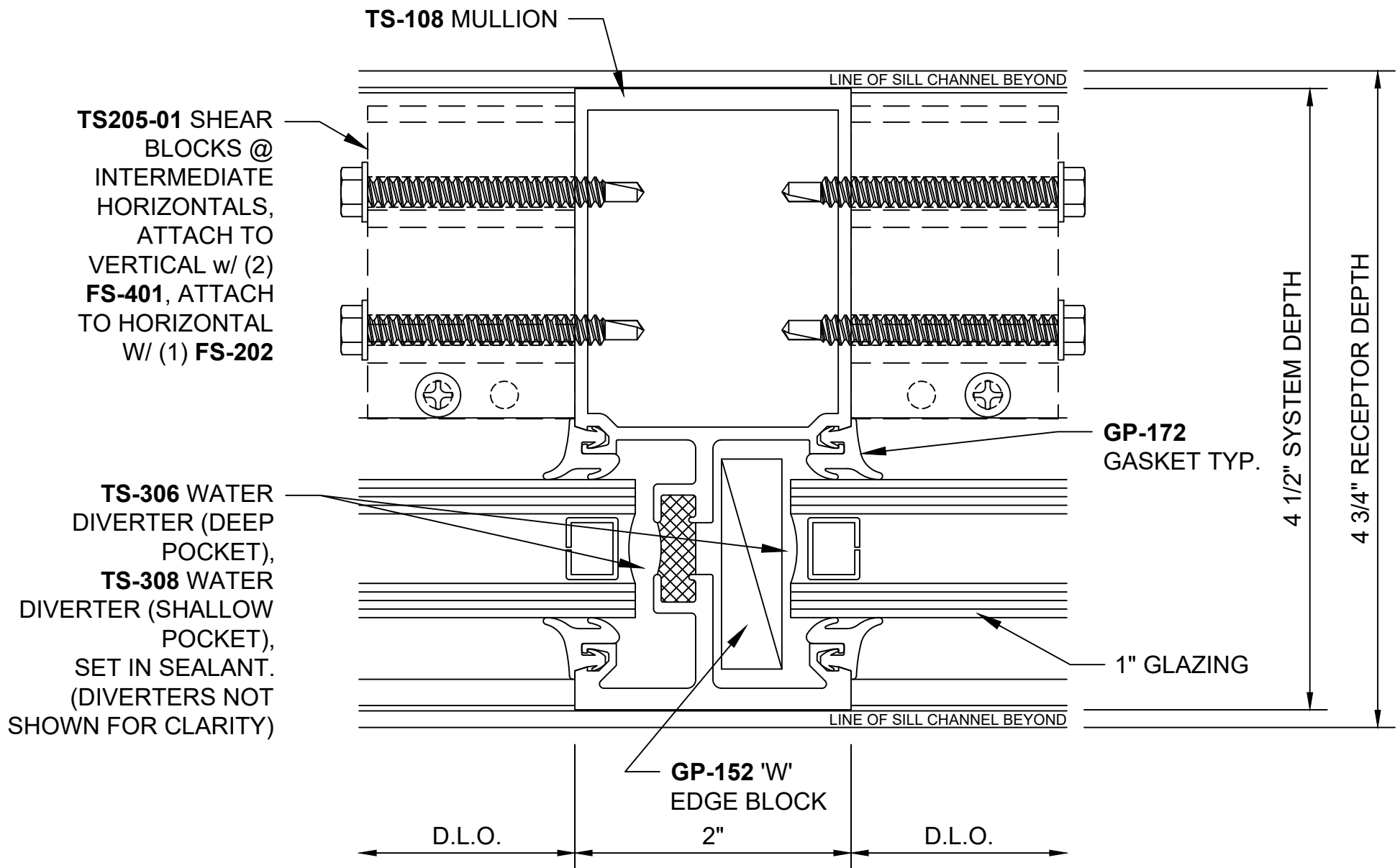


ThermaStack™ Storefront
Intermediate Horizontal (Inside Glazed) - H2515

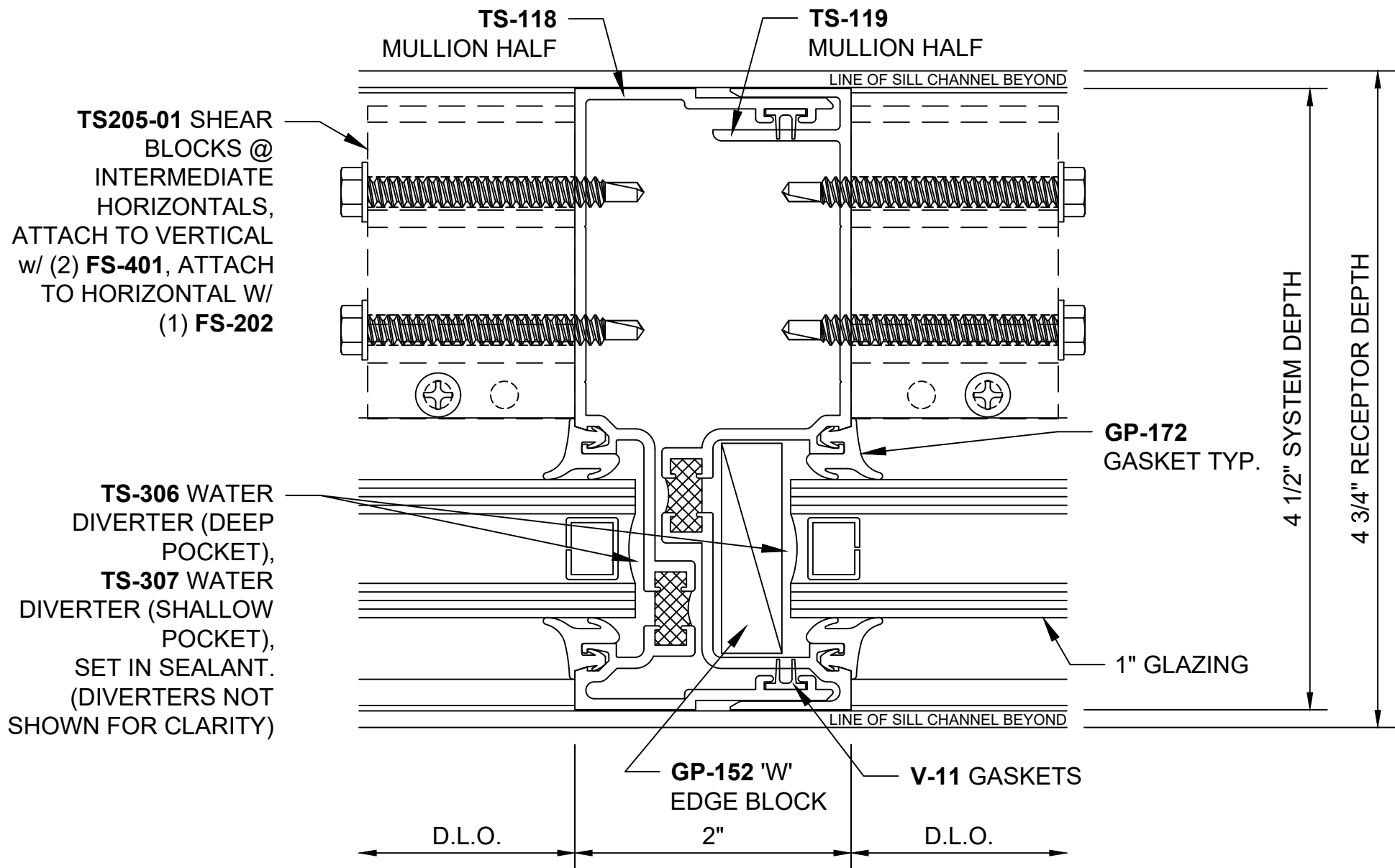


ThermaStack™ Storefront Jamb - V2501

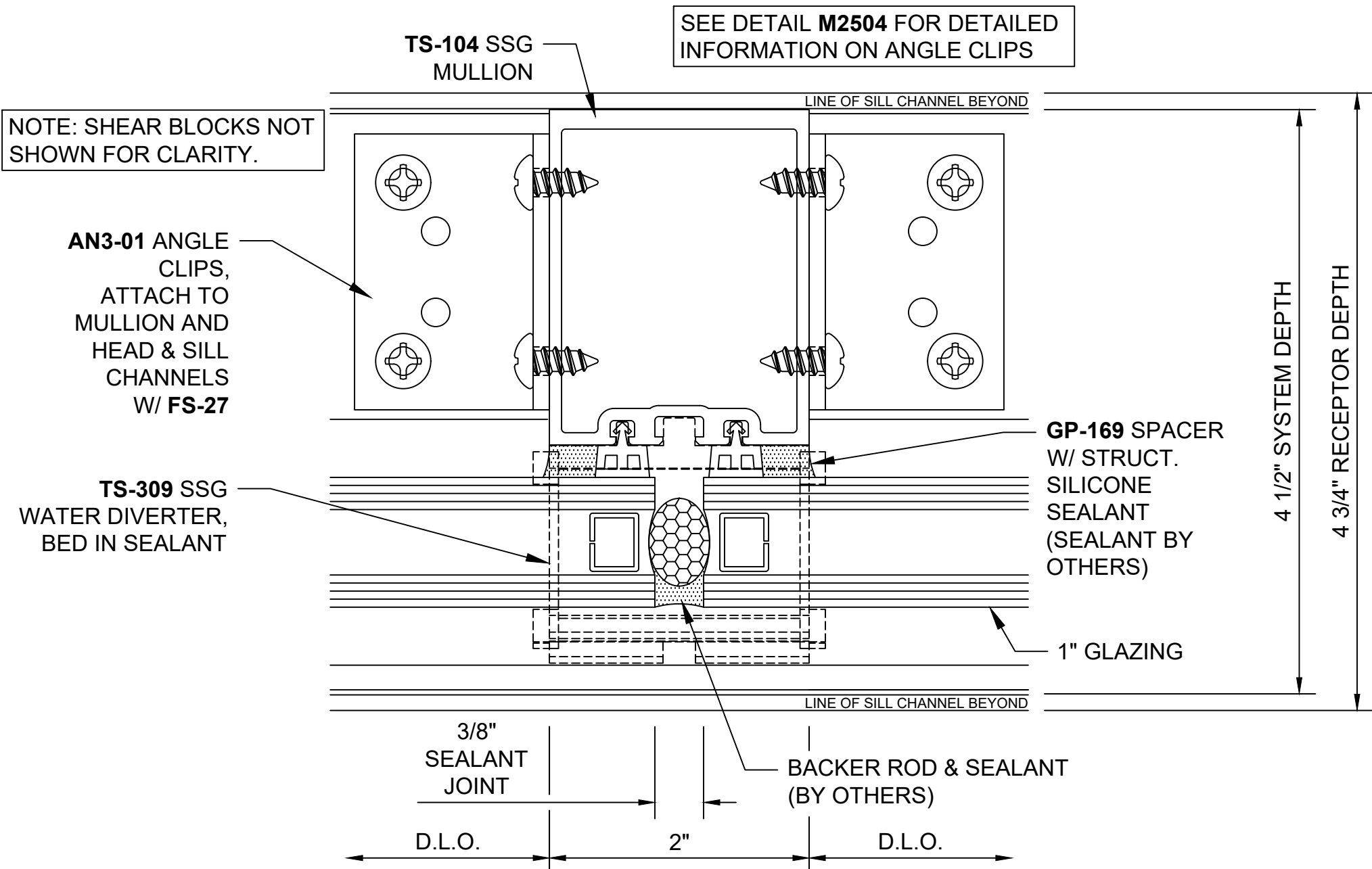




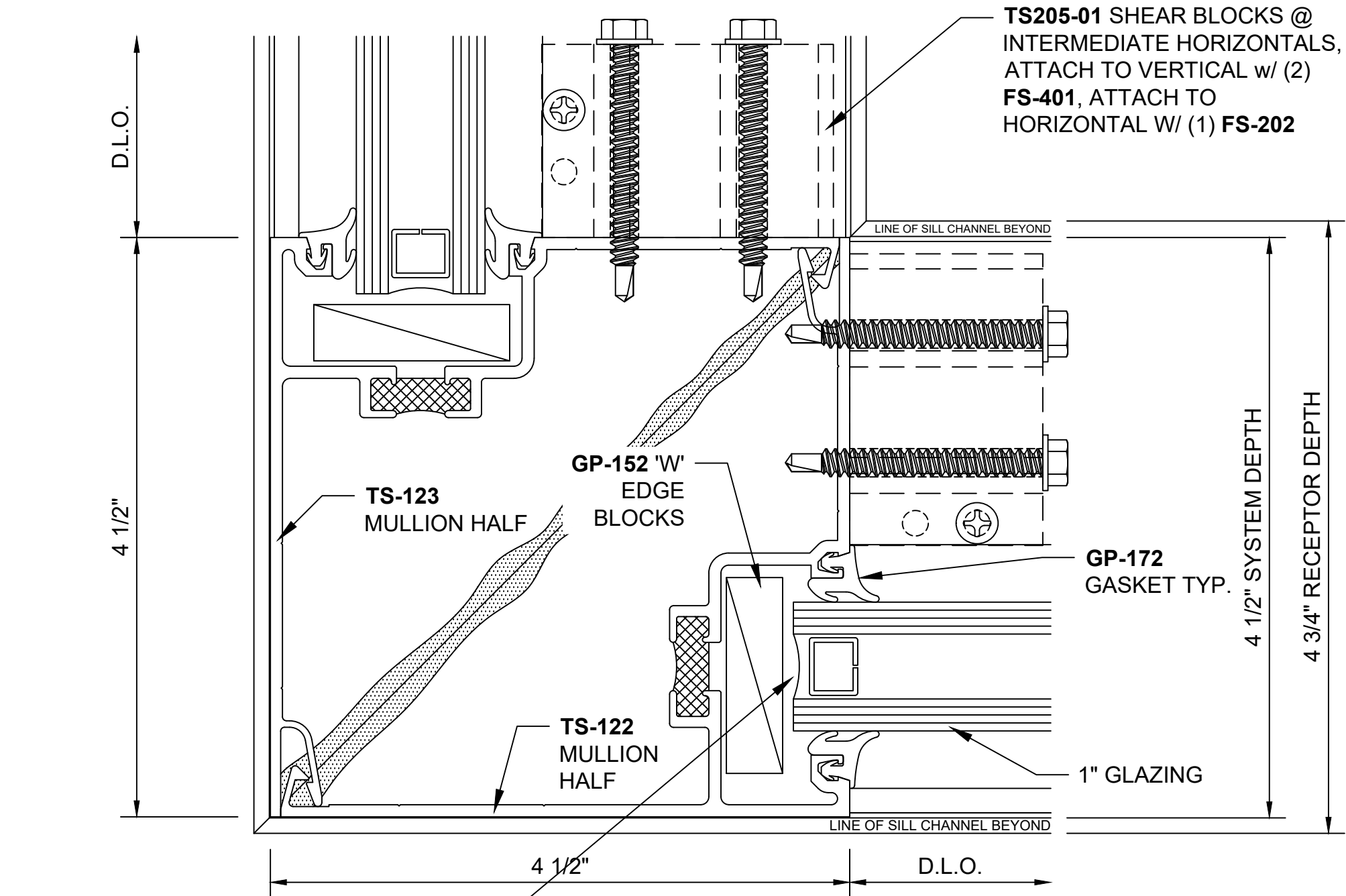
ThermaStack™ Storefront Typical Vertical - V2505



ThermaStack™ Storefront Expansion Vertical - V2508

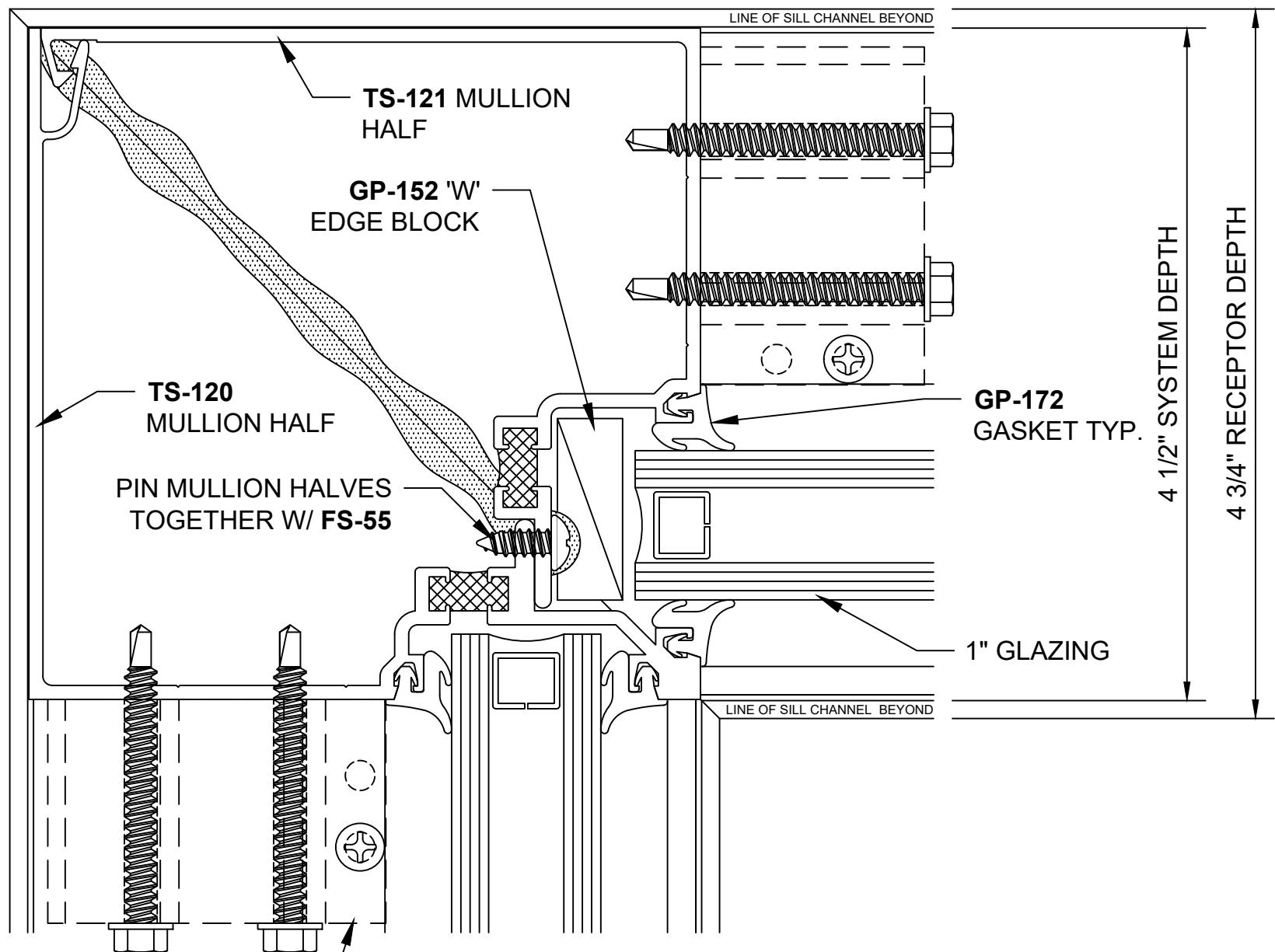


ThermaStack™ Storefront **SSG Vertical - V2510**



TS-306 WATER DIVERTERS (BOTH SIDES), SET IN SEALANT. DIVERTERS NOT SHOWN FOR CLARITY.

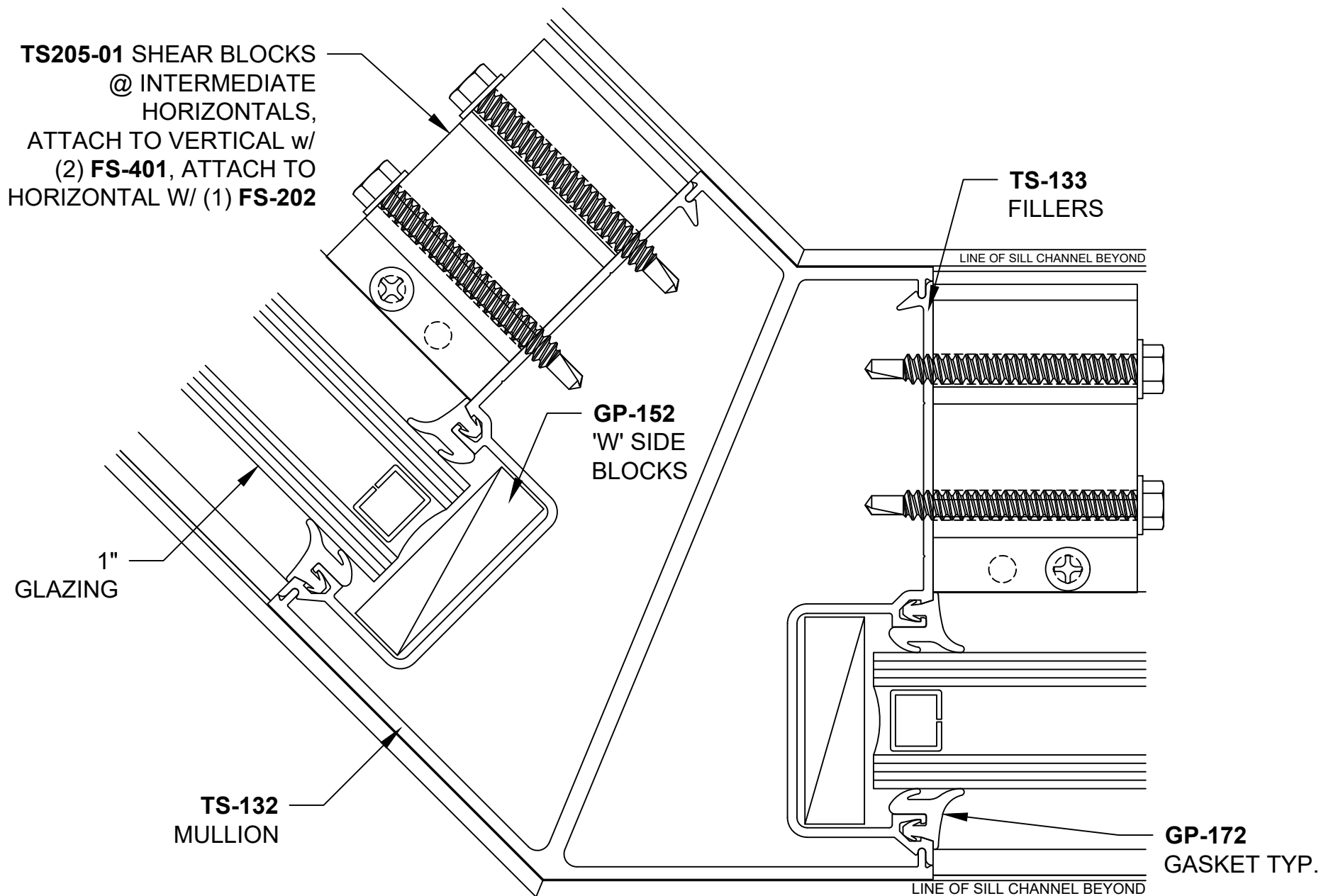
ThermaStack™ Storefront 90° Outside Corner - V2515



TS205-01 SHEAR BLOCKS @
INTERMEDIATE HORIZONTALS,
ATTACH TO VERTICAL w/ (2)
FS-401, ATTACH TO
HORIZONTAL W/ (1) **FS-202**

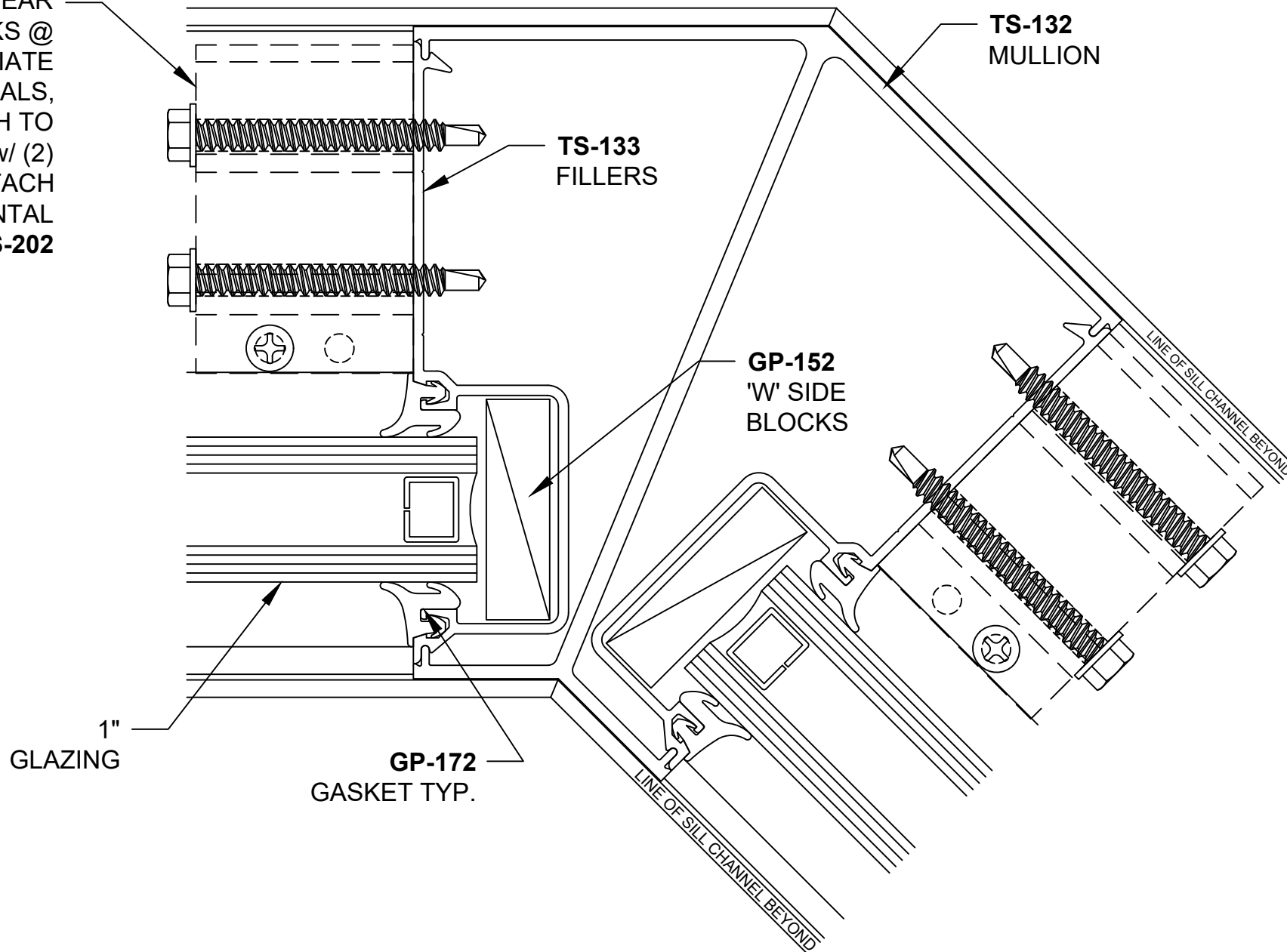
ThermaStack™ Storefront 90° Inside Corner - V2516

1-866-OLDCASTLE (653-2278) www.obe.com

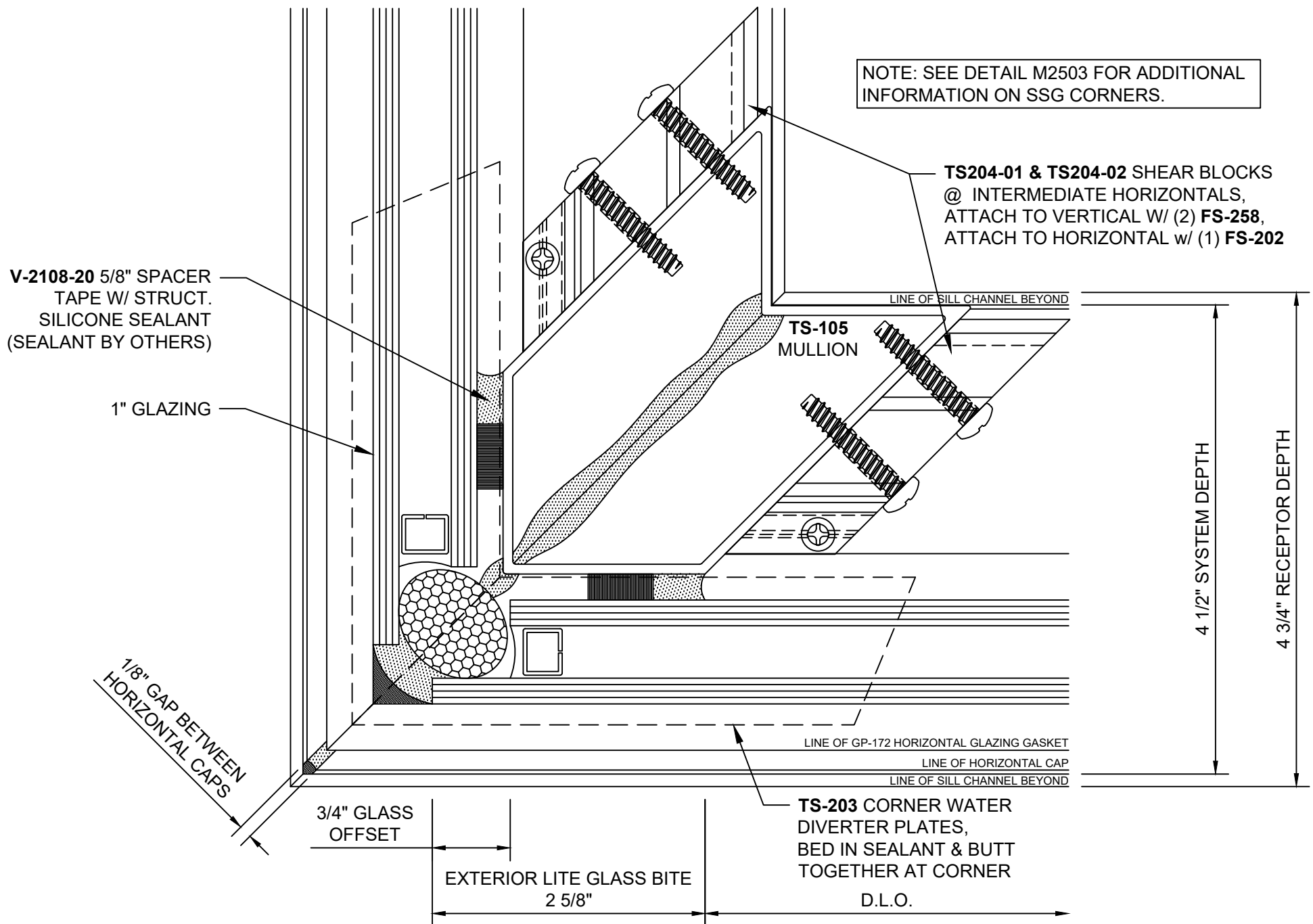


ThermaStack™ Storefront 135° Outside Corner - V2517

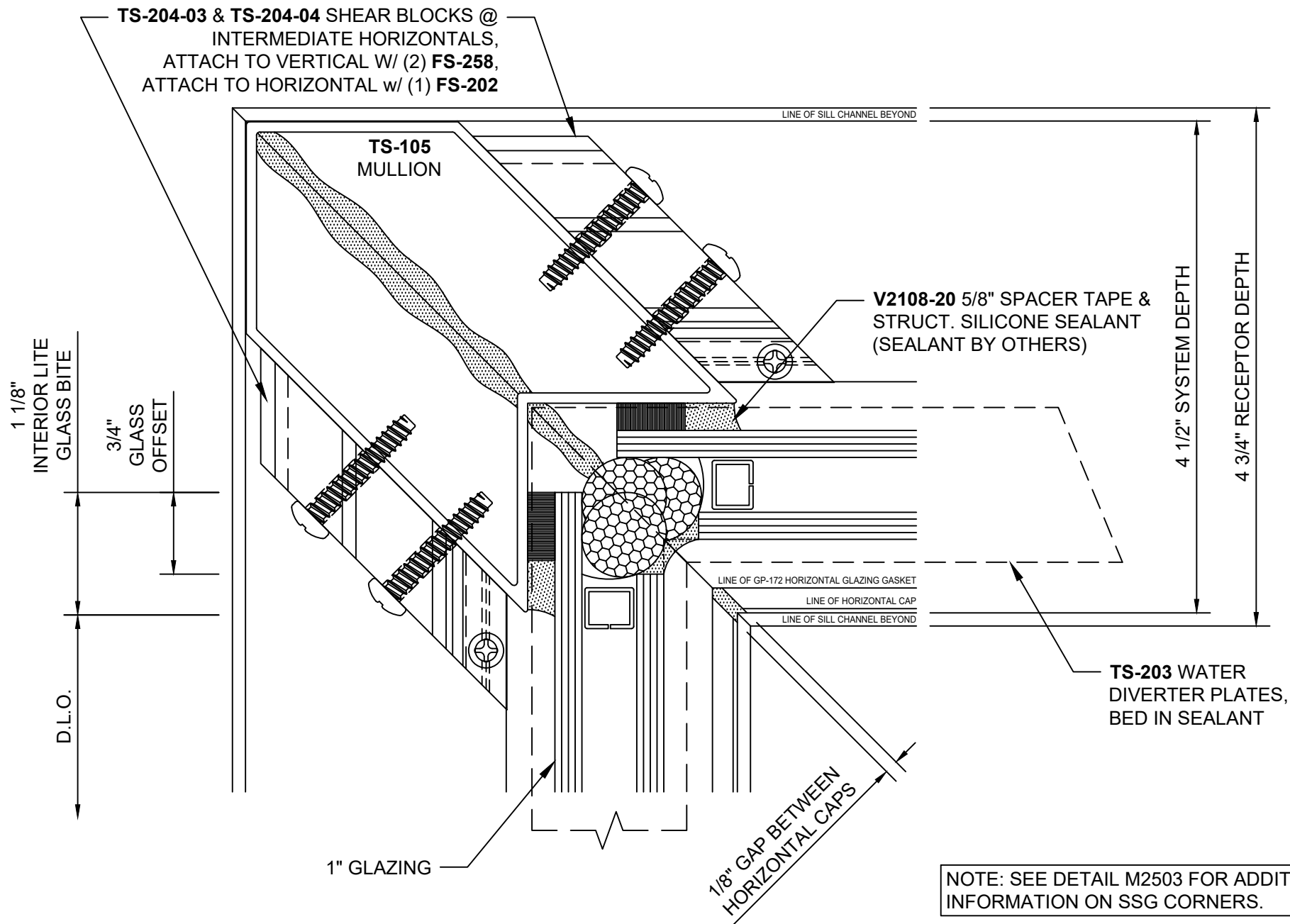
TS205-01 SHEAR
BLOCKS @
INTERMEDIATE
HORIZONTALS,
ATTACH TO
VERTICAL w/ (2)
FS-401, ATTACH
TO HORIZONTAL
w/ (1) **FS-202**



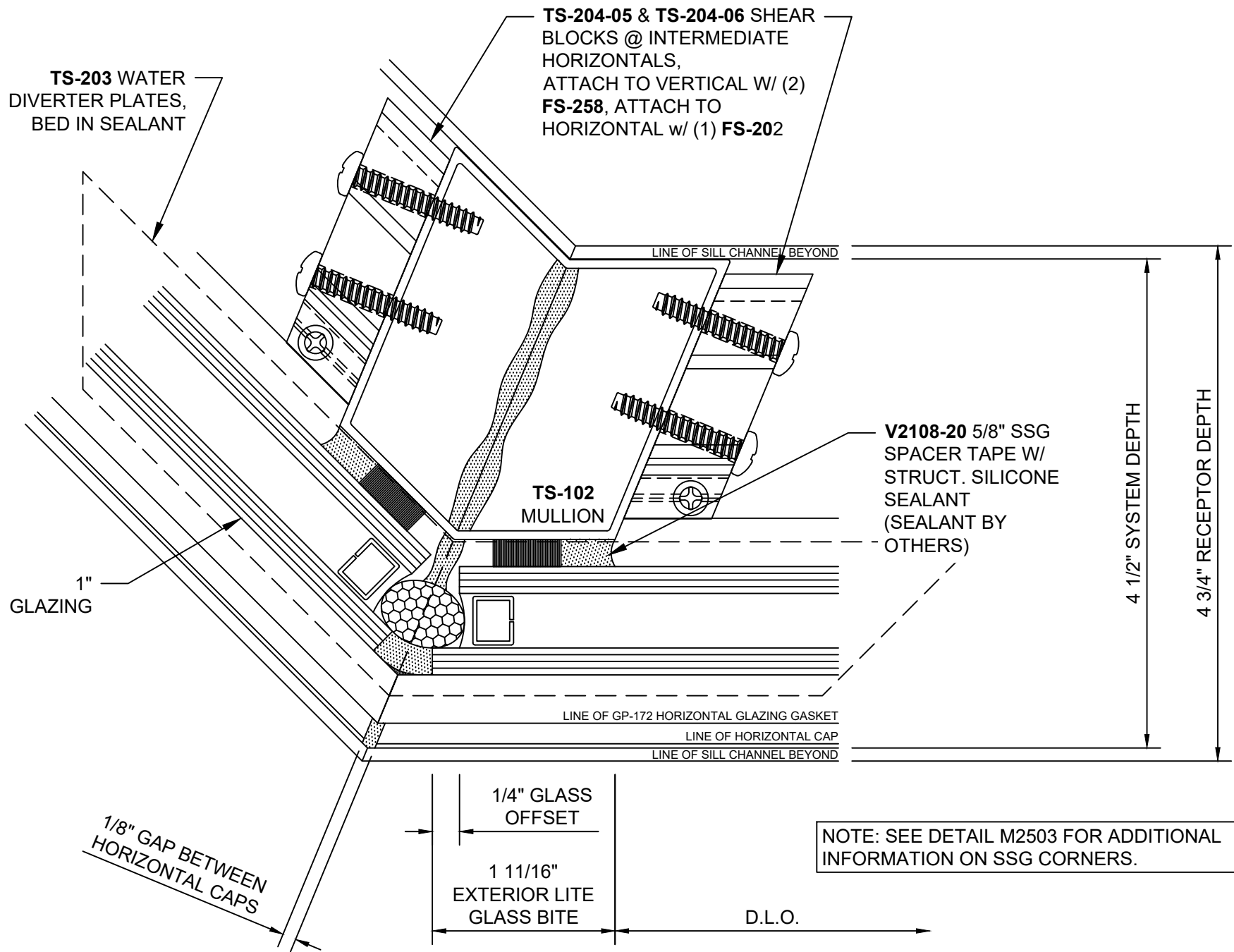
ThermaStack™ Storefront 135° Inside Corner - V2518



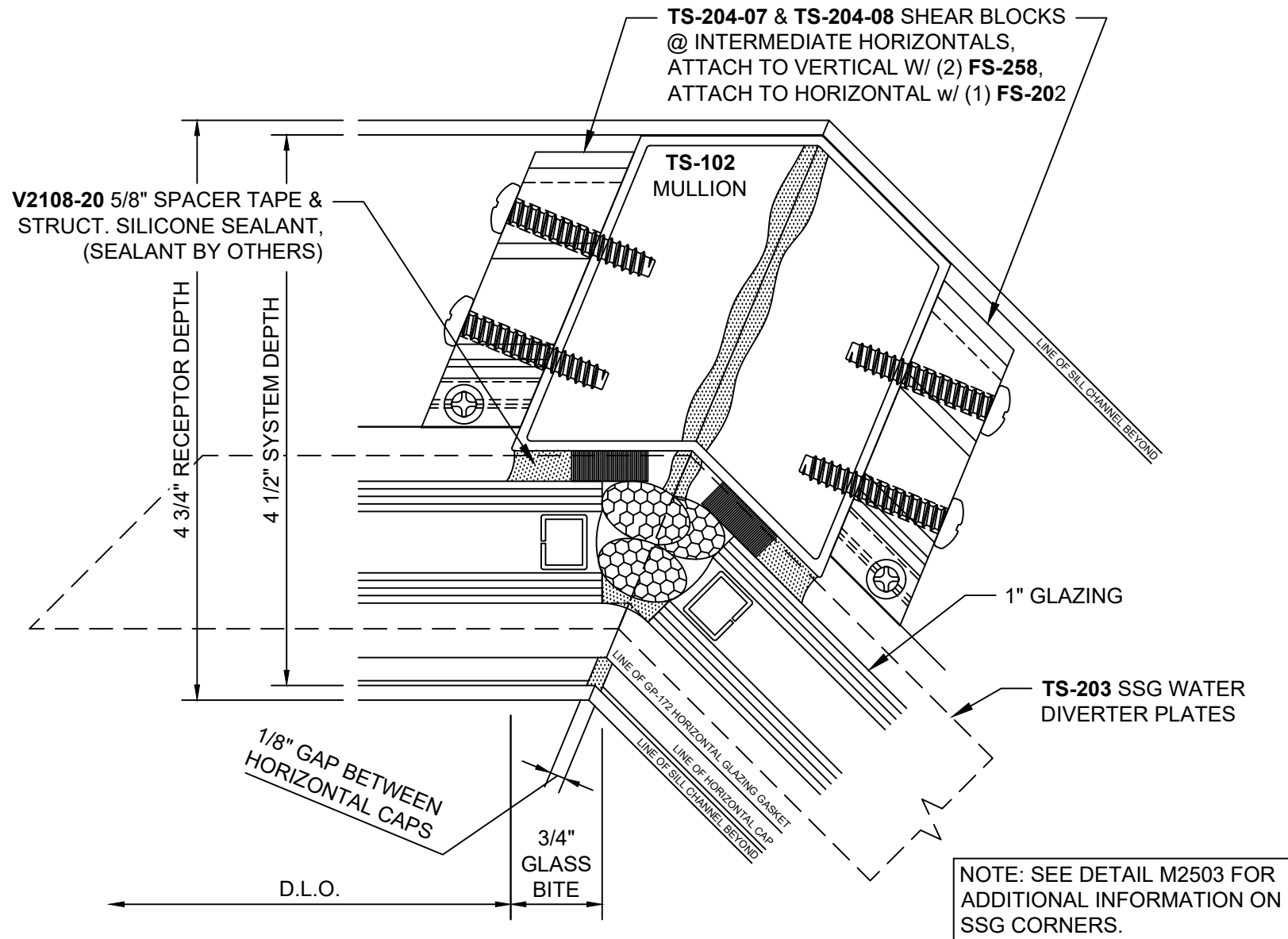
ThermaStack™ Storefront 90° SSG Outside Corner - V2525



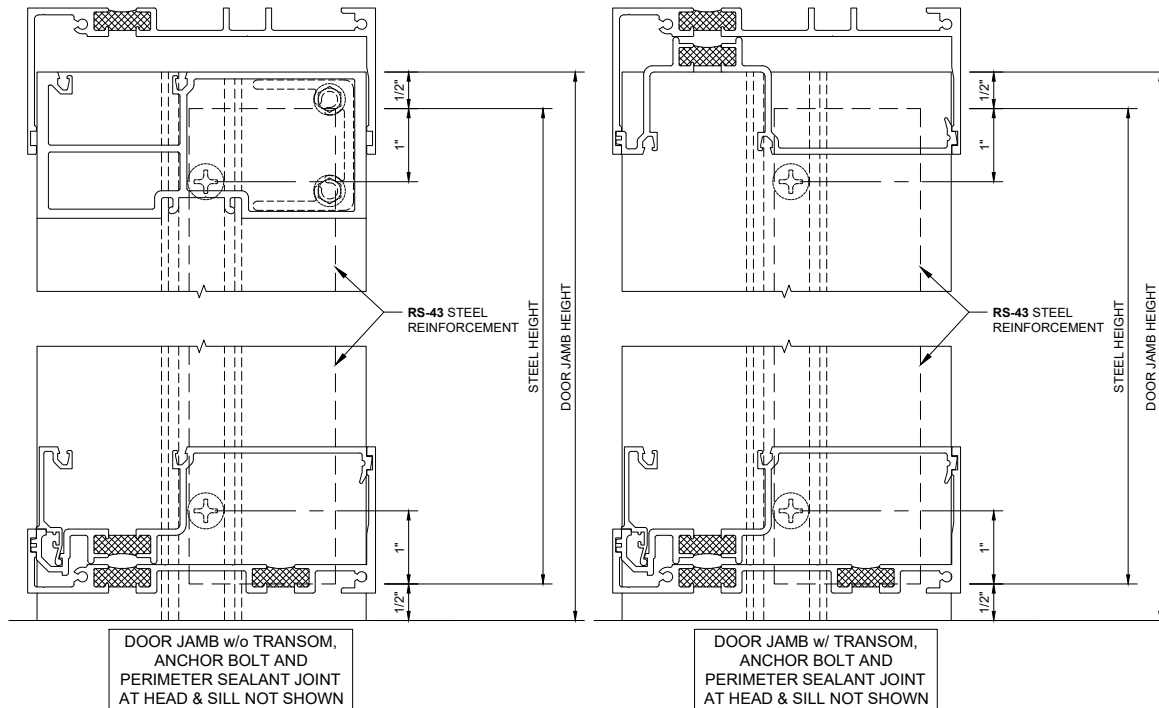
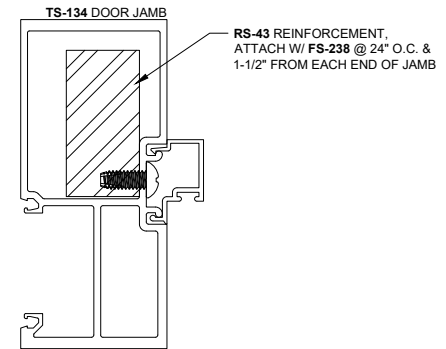
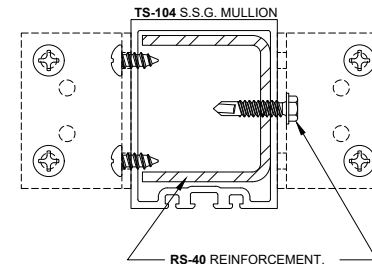
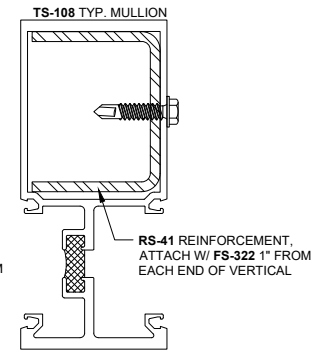
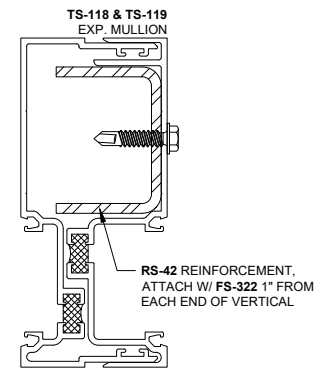
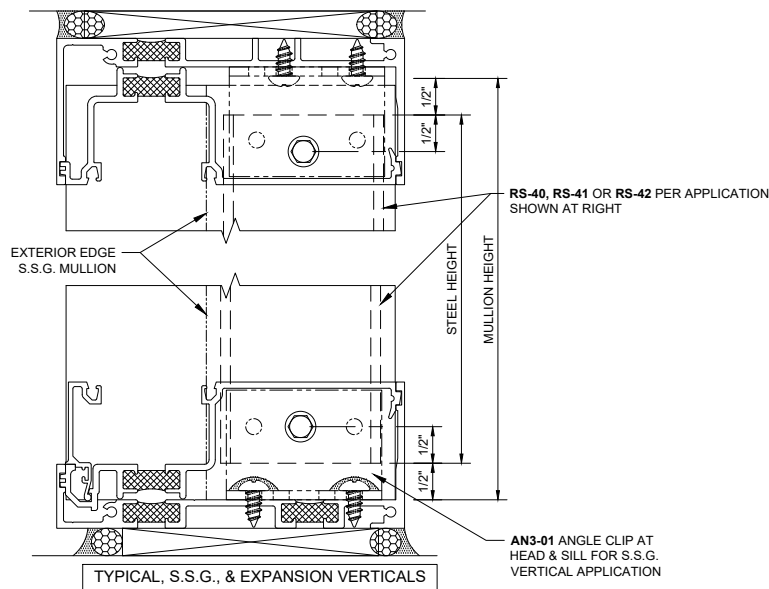
ThermaStack™ Storefront SSG 90° Inside Corner - V2526



ThermaStack™ Storefront SSG 135° Outside Corner - V2527



ThermaStack™ Storefront SSG 135° Inside Corner - V2528



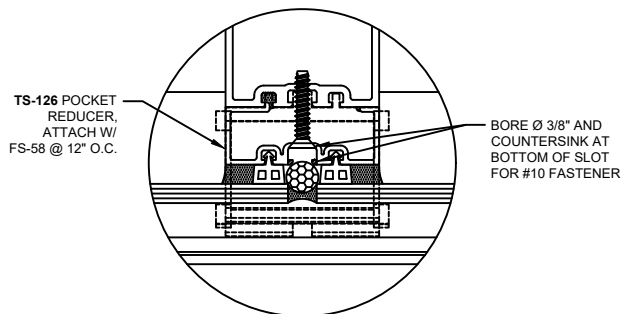
NOTES:

1. CUT STEEL TO MULLION / DOOR JAMB HEIGHT MINUS 1".
2. AT TYPICAL, S.S.G., AND EXPANSION VERTICALS, ATTACH STEEL WITH FS-322 1" FROM EACH END OF VERTICAL.
3. AT DOOR JAMBS, ATTACH RS-43 STEEL WITH FS-238 @ 24" O.C. AND 1-1/2" FROM EACH END OF JAMB.
4. AT S.S.G. VERTICALS, ATTACH STEEL THROUGH AN3-01 ANGLE CLIPS.
5. STEEL WILL REQUIRE 5/16" CLEAR HOLES OR SLOTS TO CLEAR SHEAR BLOCK FASTENERS WHERE NECESSARY.
6. OUTSIDE GLAZED HEAD & SILL SHOWN ON THIS SHEET; INSIDE GLAZED IS SIMILAR.

ThermaStack™ Storefront Steel Reinforcement - M2501

NOTES:

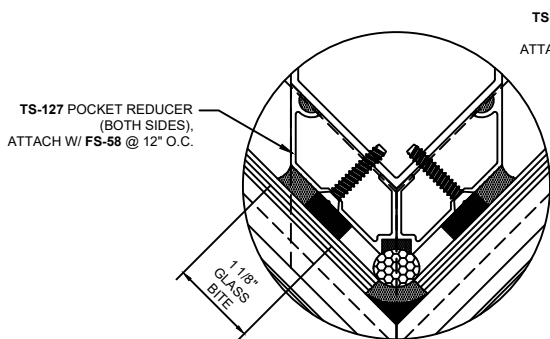
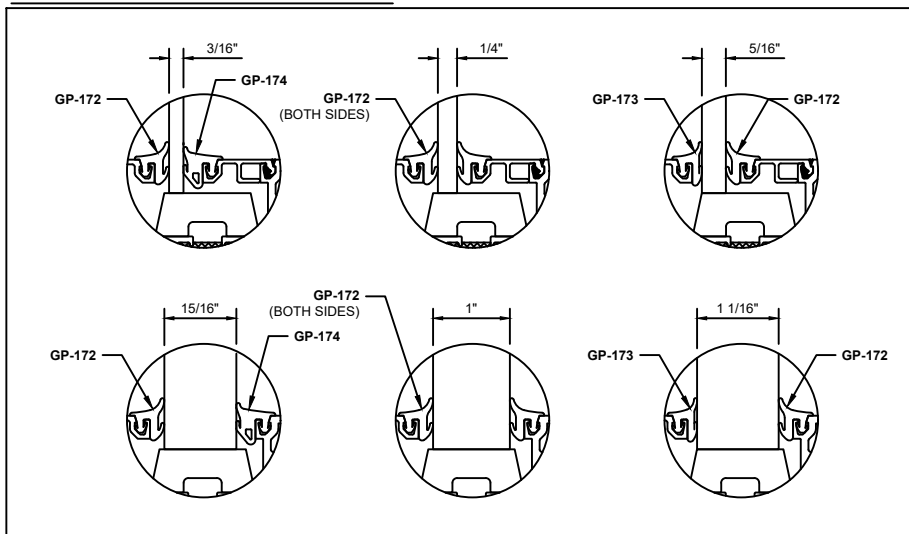
1. ALTERNATE GASKETS ARE PROVIDED TO ACCOUNT FOR GLASS THICKNESS TOLERANCES. SYSTEM IS DESIGNED FOR 1/4" AND 1" GLAZING ONLY.
2. **TS-128** POCKET REDUCER IS TYPICAL FOR CAPTURED SYSTEM. SET ALL REDUCERS IN SEALANT. GLASS POCKET MEASURES 5/8" WITH REDUCER.



TYPICAL SSG VERTICAL

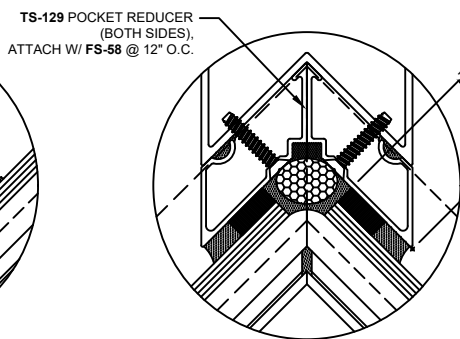
SEE DETAIL V2510 FOR ADDITIONAL INFORMATION REGARDING TYPICAL SSG CONDITION

GLAZING TOLERANCE GUIDE



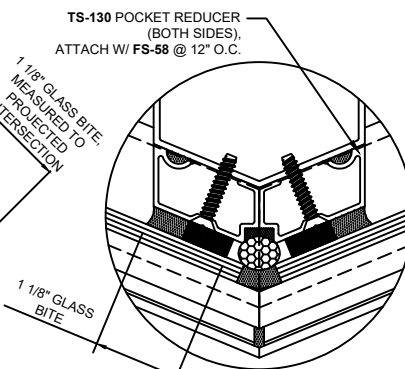
90° SSG OUTSIDE CORNER

SEE DETAILS V2525 & M2503 FOR ADDITIONAL INFORMATION REGARDING CORNER



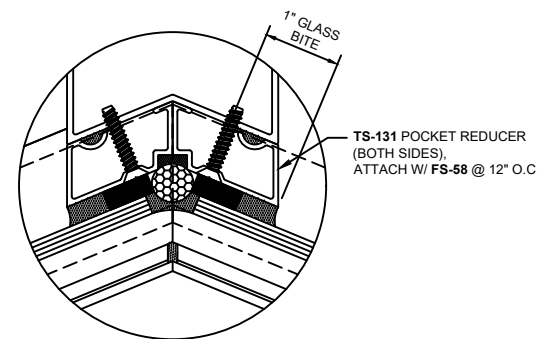
90° SSG INSIDE CORNER

SEE DETAILS V2526 & M2503 FOR ADDITIONAL INFORMATION REGARDING CORNER



135° SSG OUTSIDE CORNER

SEE DETAILS V2527 & M2503 FOR ADDITIONAL INFORMATION REGARDING CORNER

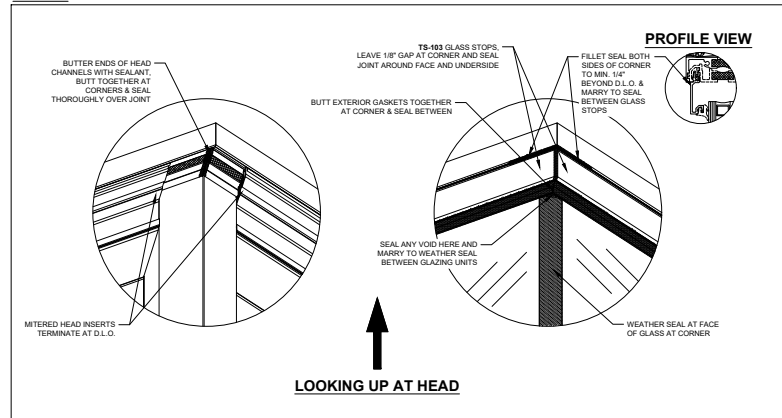


135° SSG INSIDE CORNER

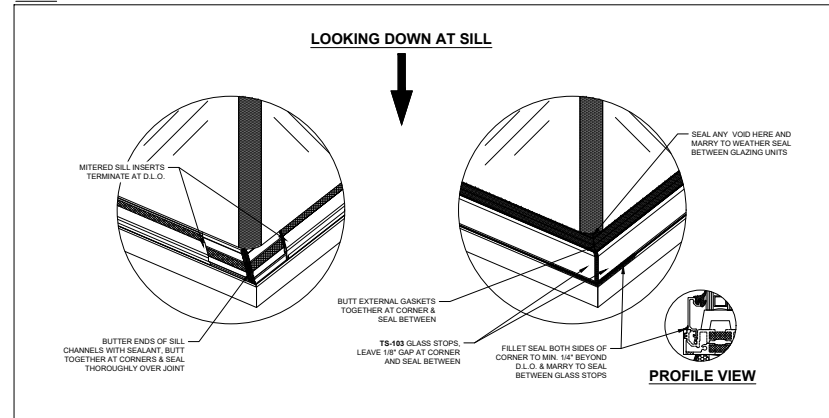
SEE DETAILS V2528 & M2503 FOR ADDITIONAL INFORMATION REGARDING CORNER

ThermaStack™ Storefront Alternate Gaskets & Pocket Reducers - M2502

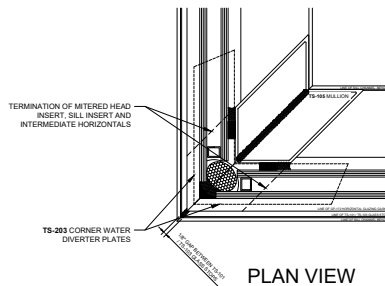
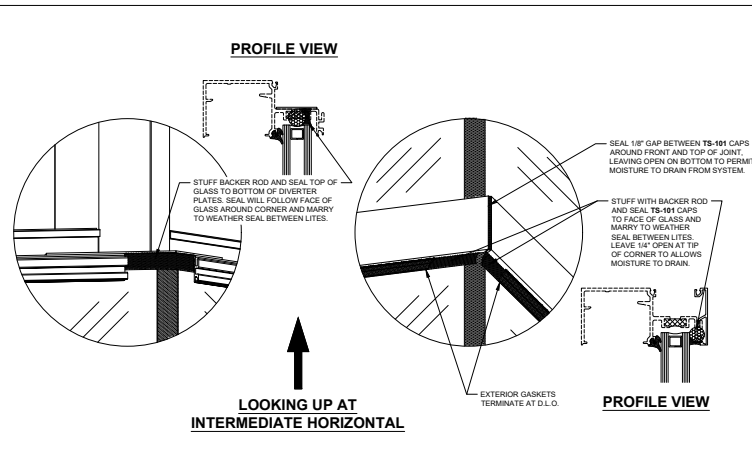
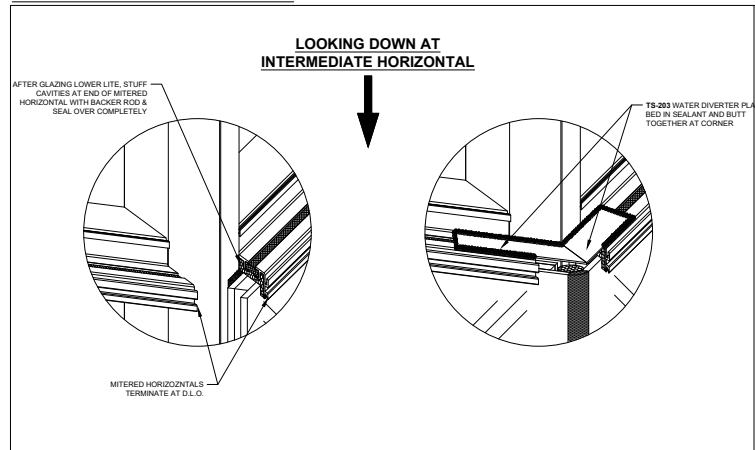
HEAD



SILL



INTERMEDIATE HORIZONTAL

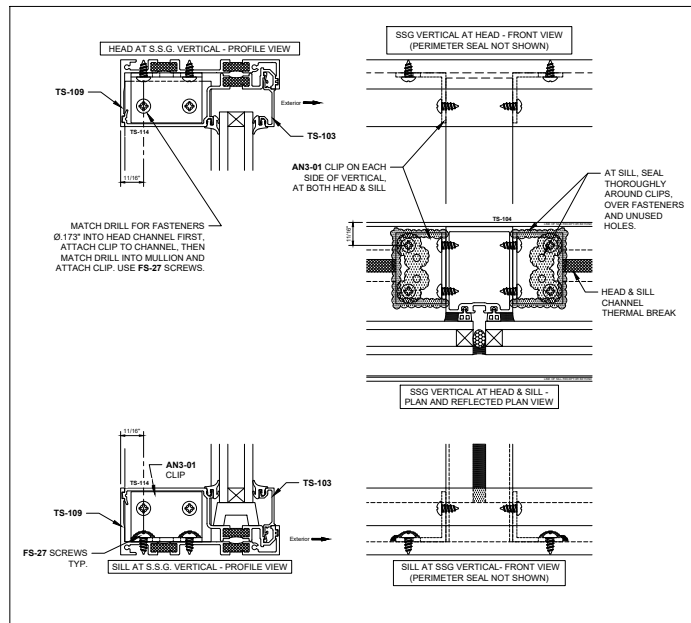


NOTES:

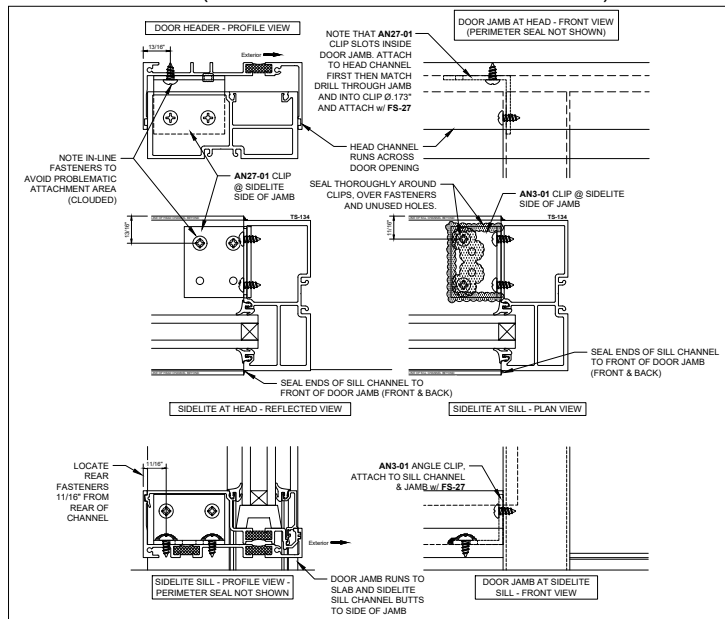
1. 90° SSG OUTSIDE CORNER SHOWN; OTHER SSG CORNER CONDITIONS ARE SIMILAR.
2. PERIMETER SEALANT JOINT AT HEAD & SILL NOT SHOWN.

ThermaStack™ Storefront SSG Corner Notes - M2503

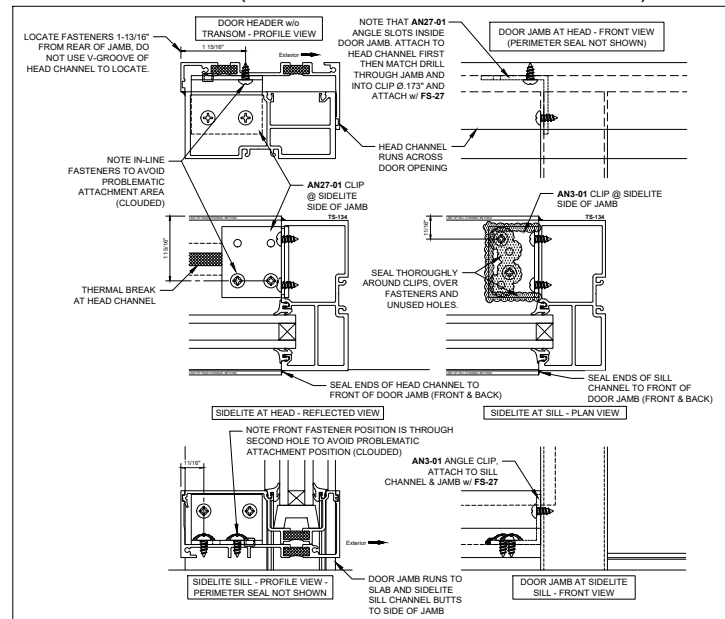
ANGLE CLIPS AT S.S.G. VERTICALS



ANGLE CLIPS AT DOOR FRAME - OUTSIDE GLAZED SYSTEM (NOTE: TRANSOM HEAD IS SIMILAR)



ANGLE CLIPS AT DOOR FRAME - INSIDE GLAZED SYSTEM (NOTE: TRANSOM HEAD IS SIMILAR)



ThermaStack Storefront Notes on Angle Clips - M2504