

Oldcastle BuildingEnvelope®

1-866-Oldcastle (653-2278) - www.obe.com

RELIANCE™ STORMMAX® HIGH PERFORMANCE CURTAIN WALL 3" X 10" W/ 1-5/16" GLAZING - TABLE OF CONTENTS

(Drawing numbers---i.e., V9661---used as CAD detail reference only)

Elevation

Horizontal Details

H9661 - Head
H9662 - Intermediate Horizontal
H9663 - Sill
H9664 - Roll-over Horizontal
H9665 - Roll-under Horizontal

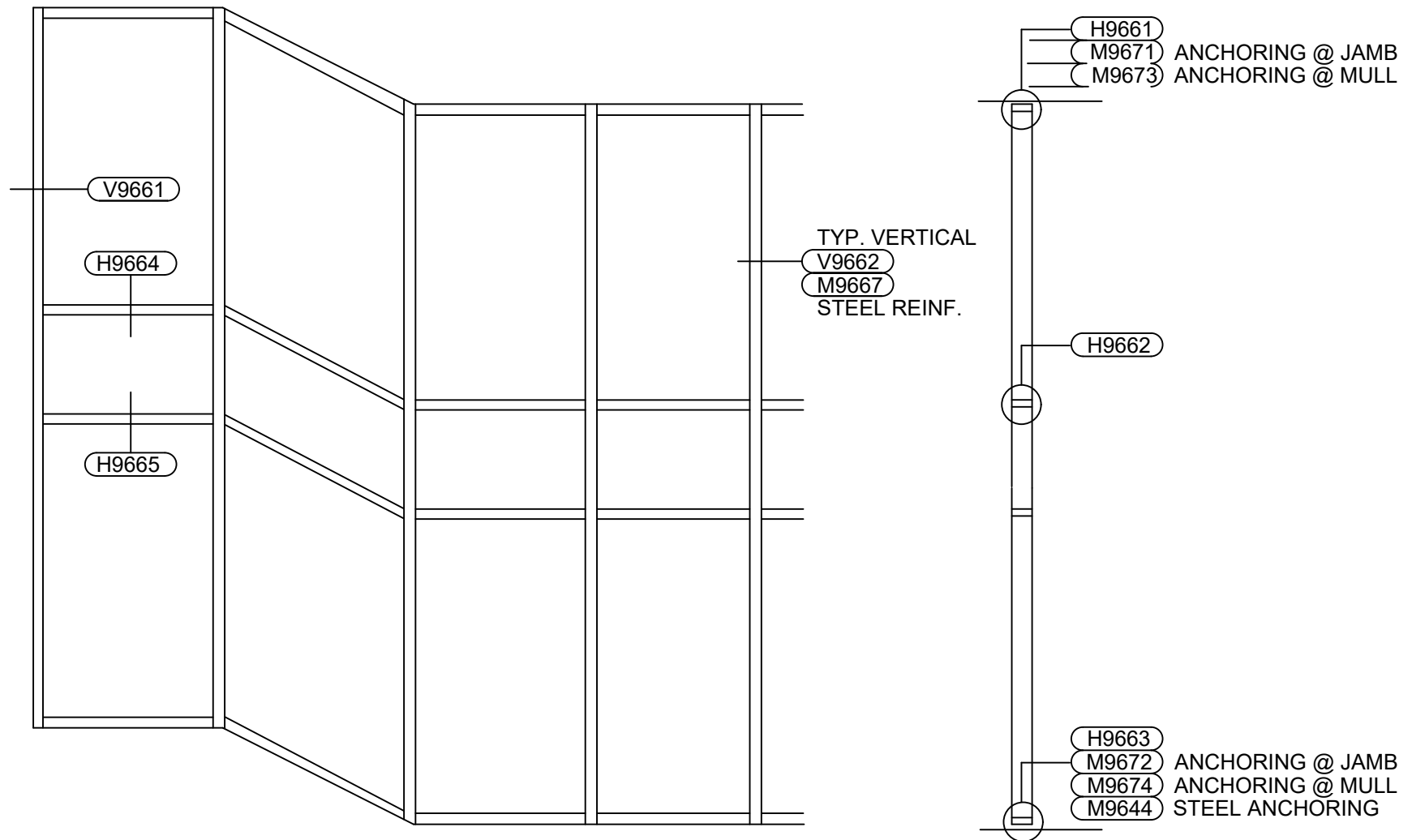
Vertical Details

V9661 - Jamb
V9662 - Typical Vertical

Misc. Details

M9644 - Steel Anchoring
M9667 - Steel Reinforcement
M9671 - Jamb Anchoring at Head
M9672 - Jamb Anchoring at Sill
M9673 - Mullion Anchoring at Head
M9674 - Mullion Anchoring at Sill

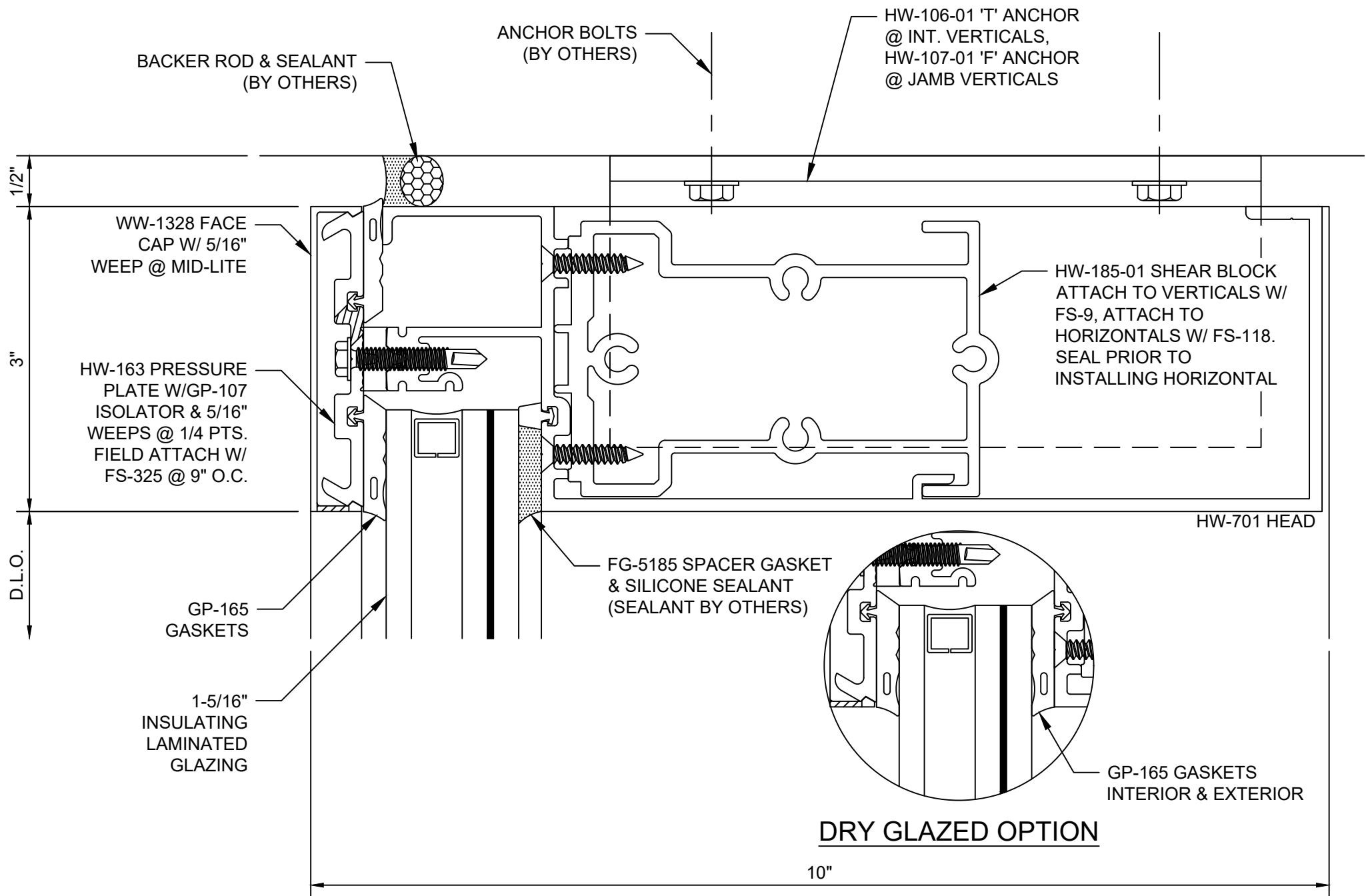
Table of Contents



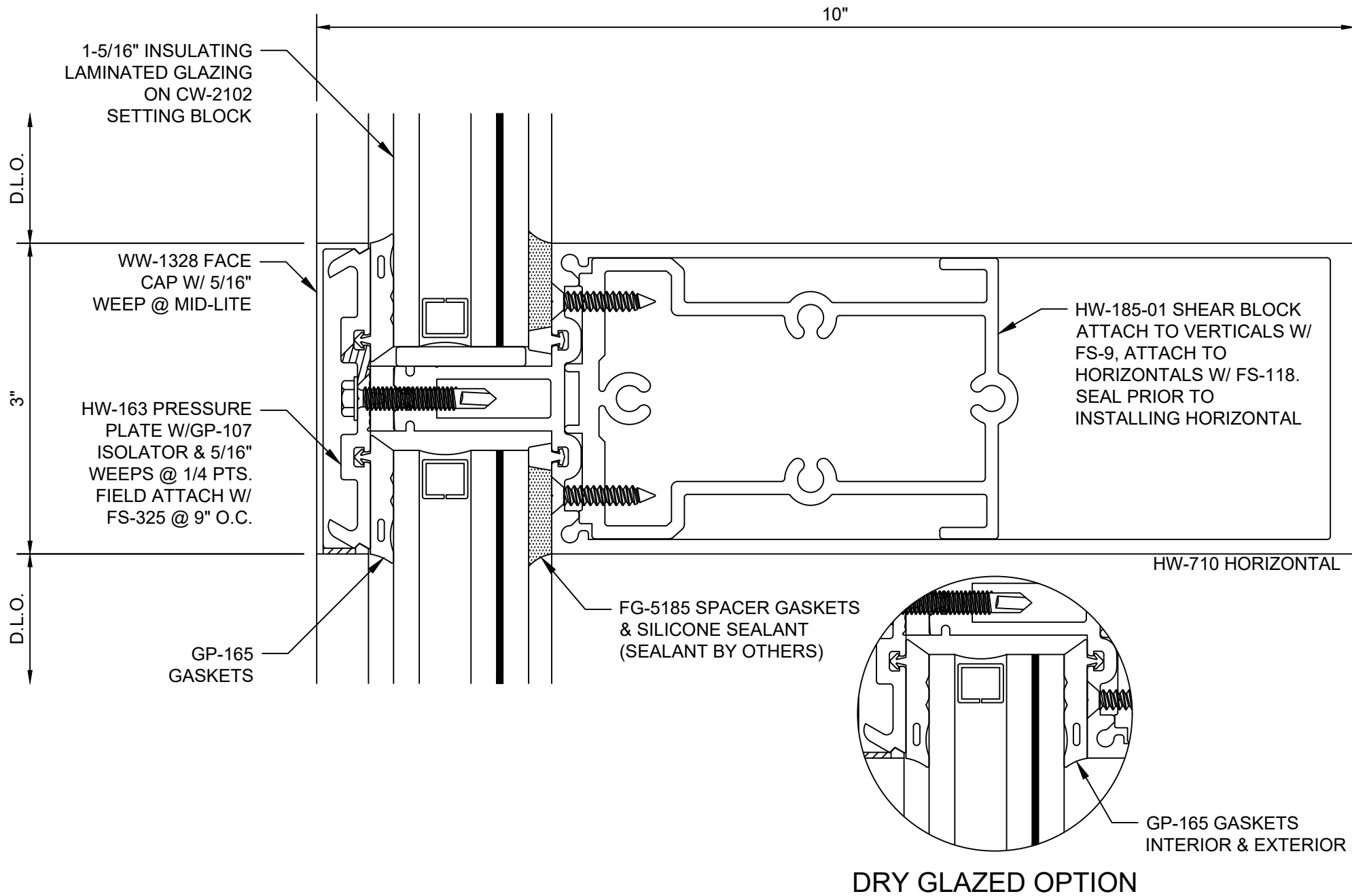
NOTE: FOR SPECIFIC PRODUCT APPLICATIONS CONTACT AN
ODCASTLE BUILDINGENVELOPE® REPRESENTATIVE

Reliance™ StormMax® High Performance Curtain Wall

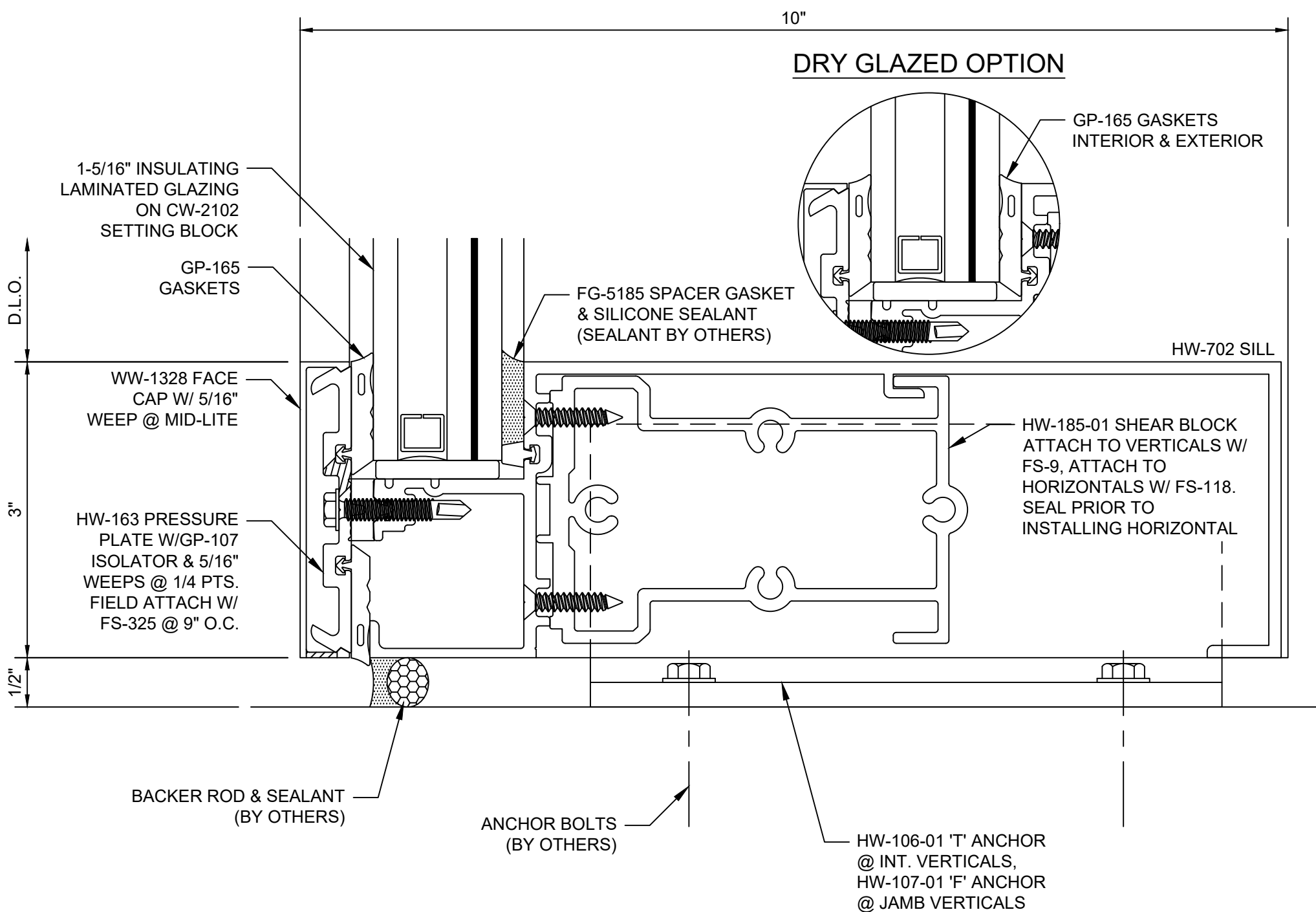
3" x 10" w/ 1-5/16" Glazing - Elevation



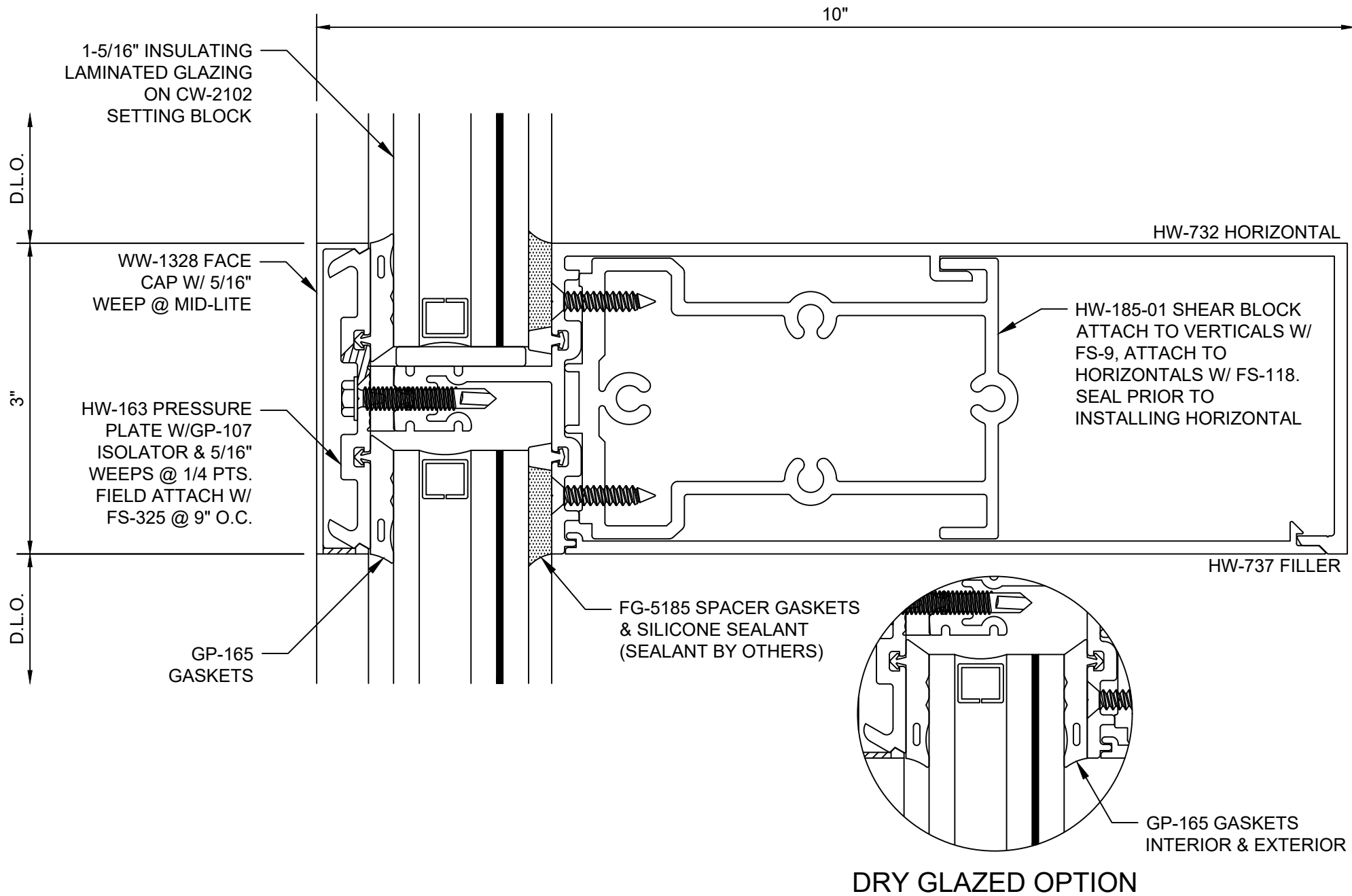
Reliance™ StormMax® High Performance Head - H9661



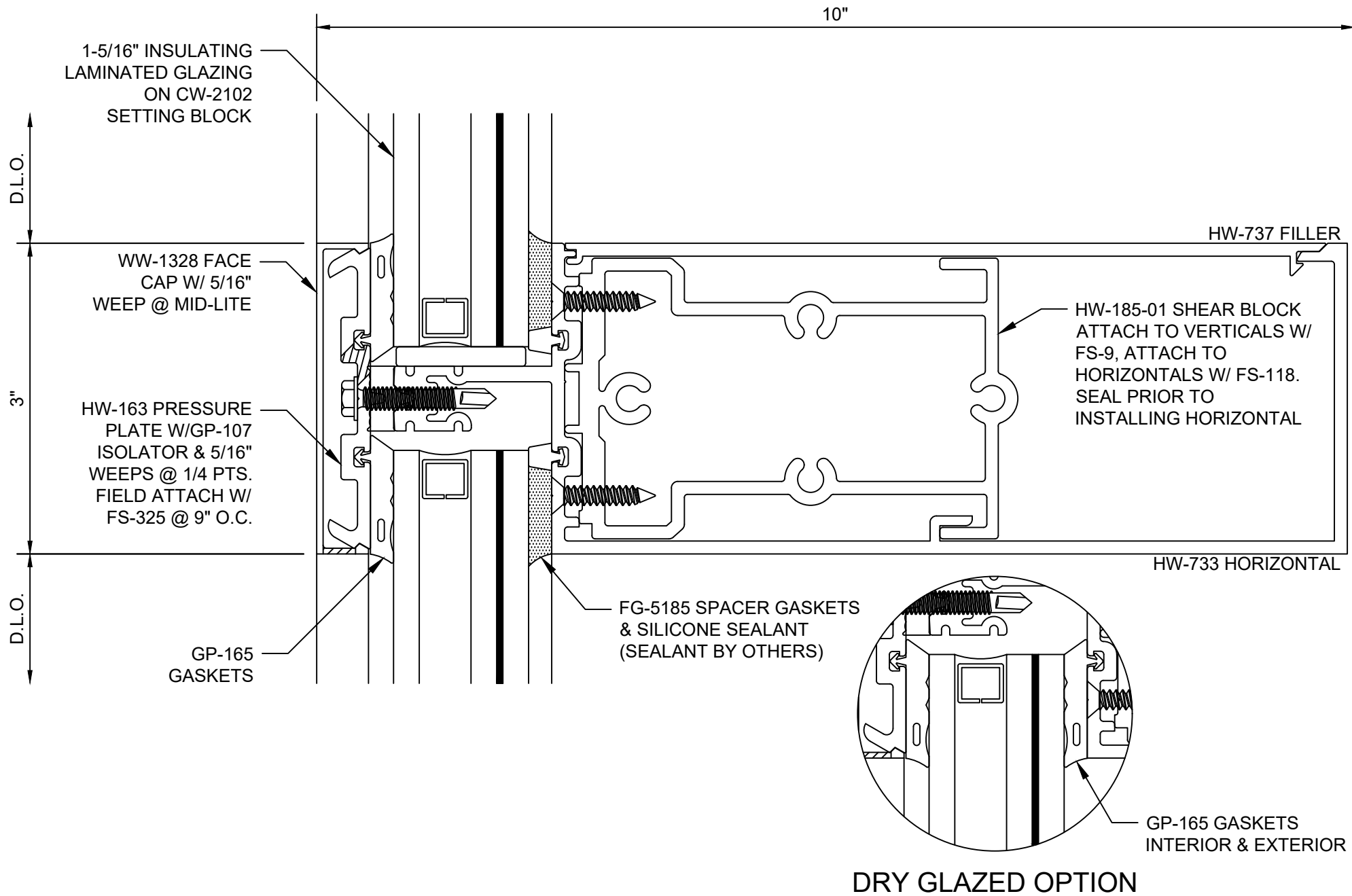
Reliance™ StormMax® High Performance Intermediate Horizontal - H9662



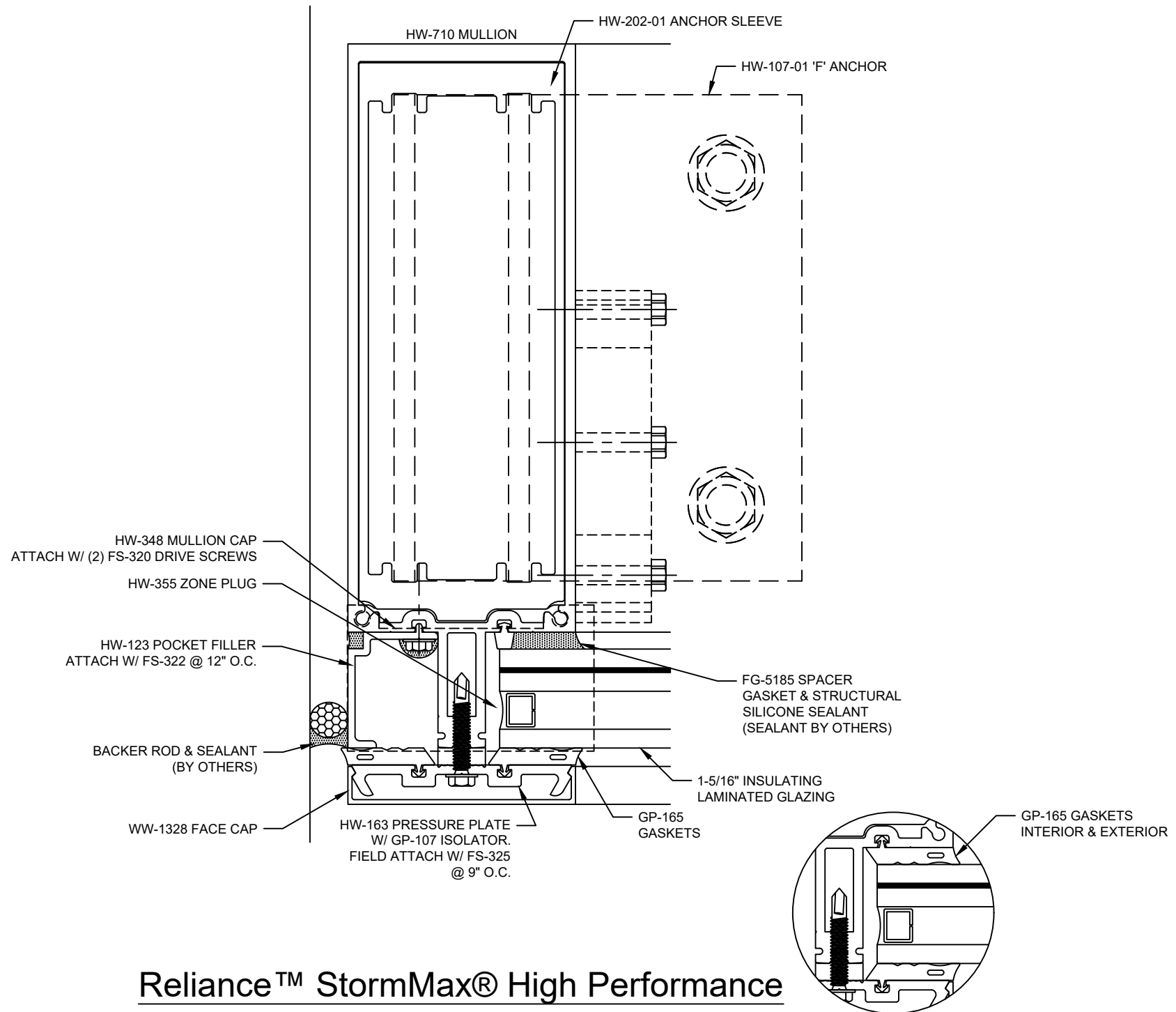
Reliance™ StormMax® High Performance
Sill - H9663



Reliance™ StormMax® High Performance Roll-over Horizontal - H9664

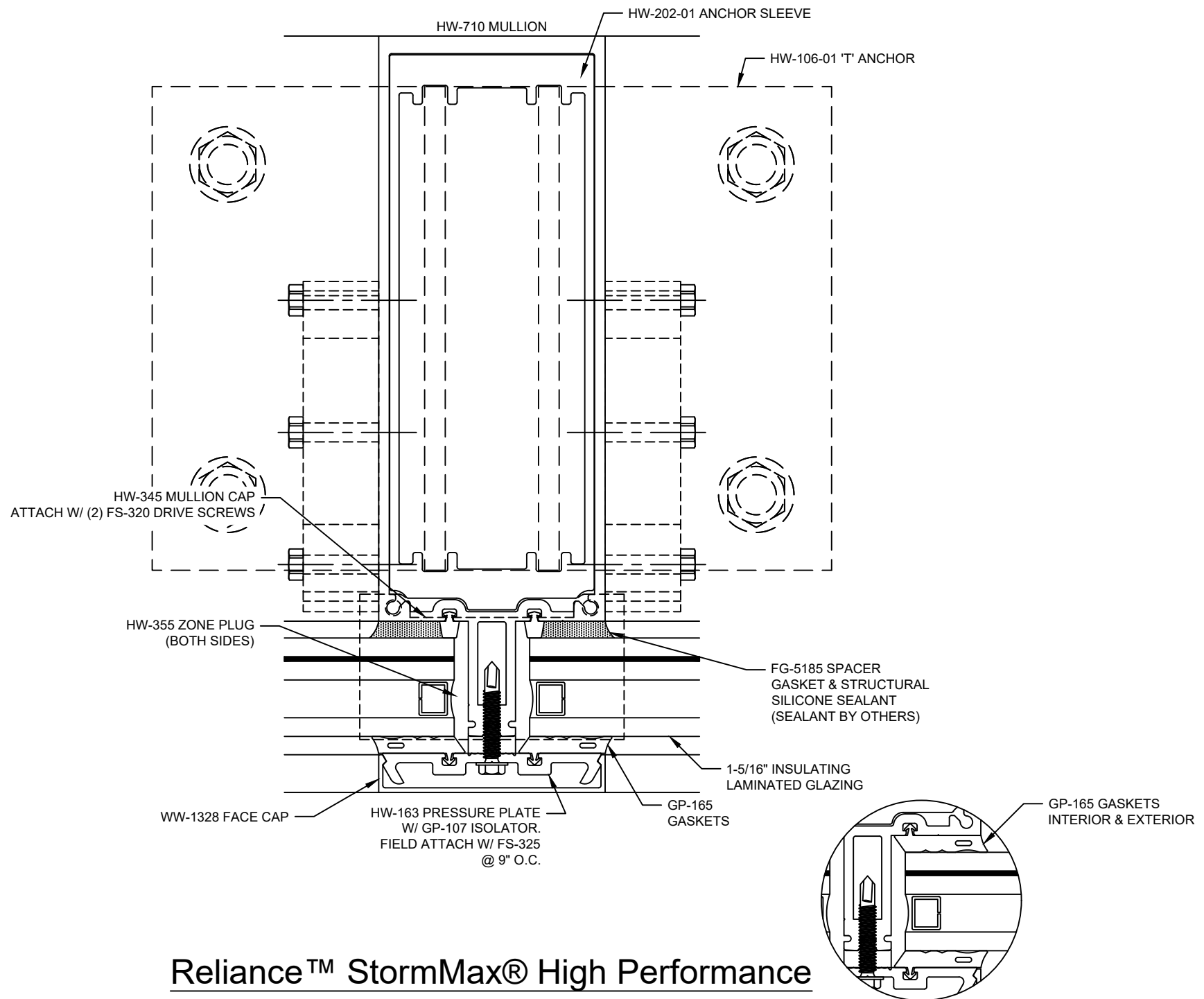


Reliance™ StormMax® High Performance Roll-under Horizontal - H9665



Reliance™ StormMax® High Performance Jamb - V9661

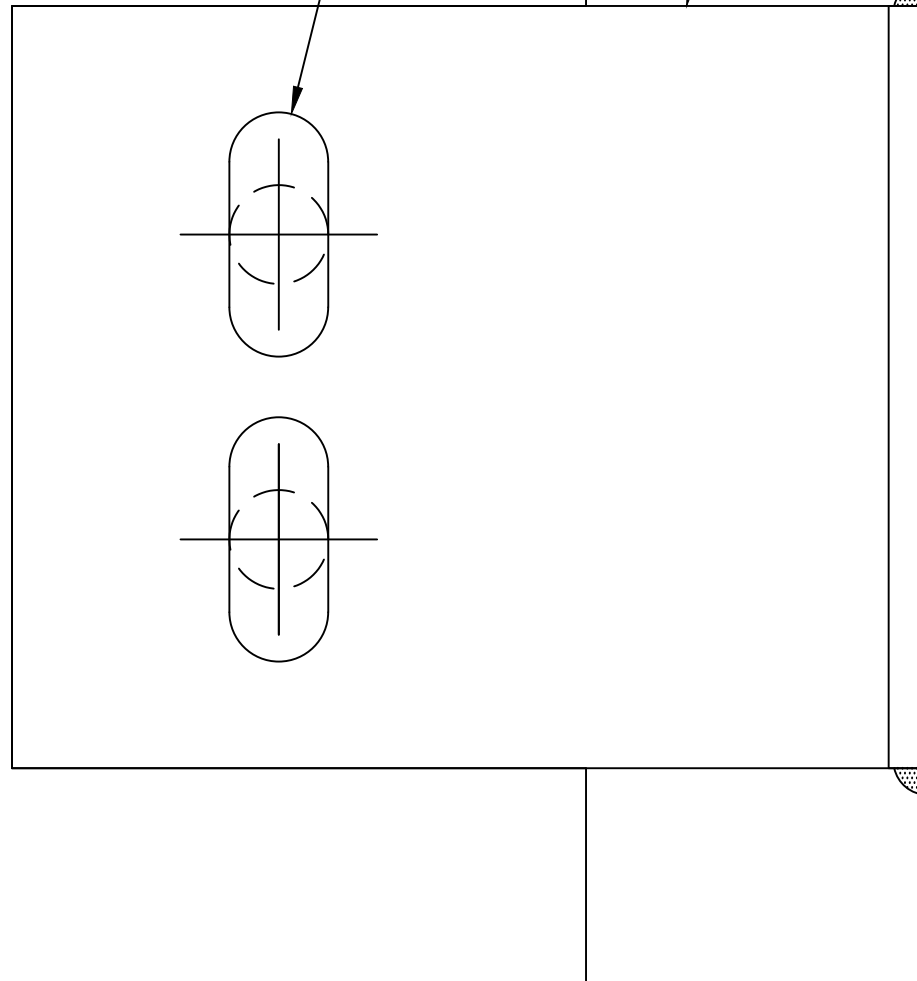
DRY GLAZED OPTION



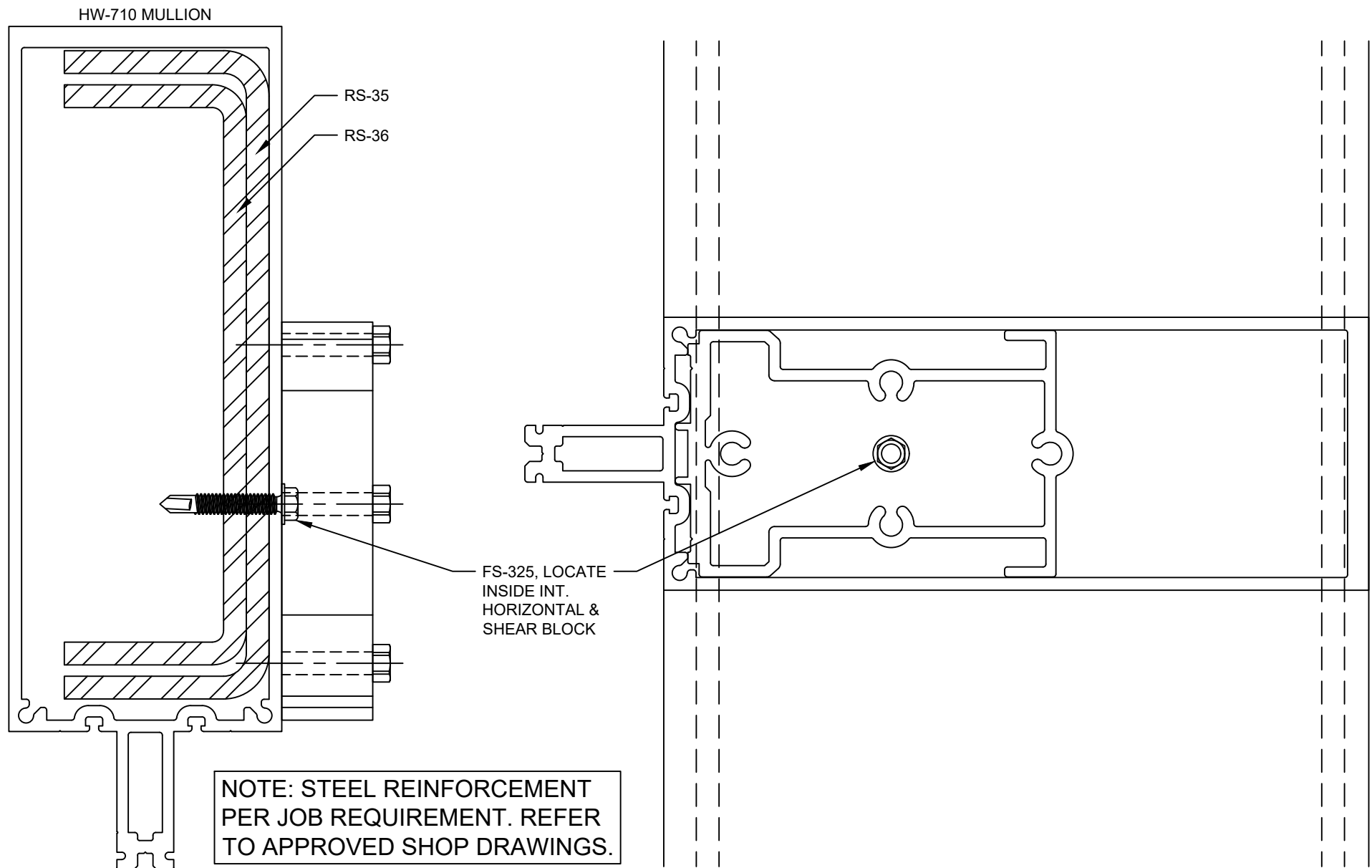
Reliance™ StormMax® High Performance Typical Vertical - V9662

STEEL ANCHOR DESIGN BY
STRUCTURAL ENGINEER,
REFER TO APPROVED SHOP
DRAWINGS

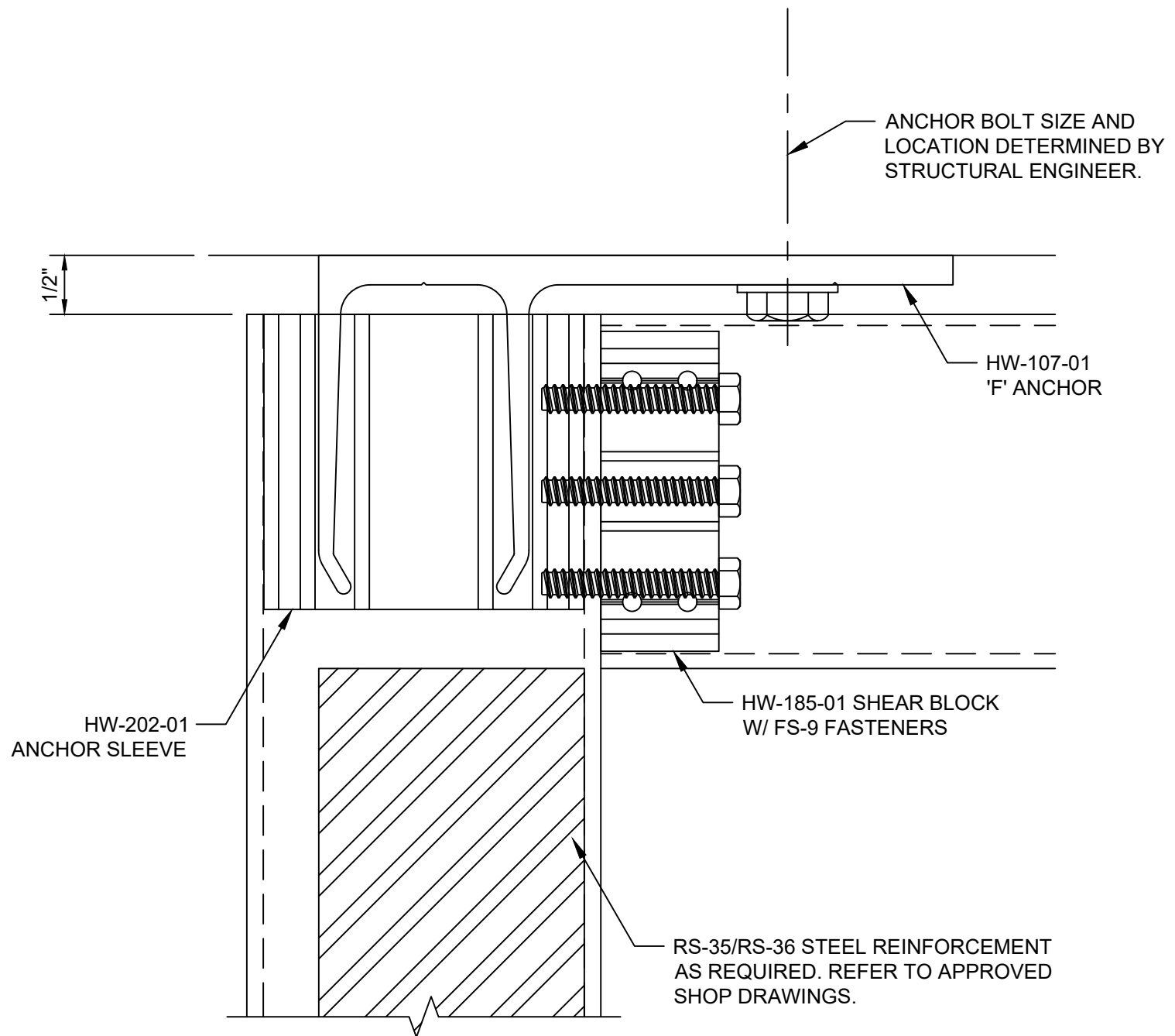
HOLE AT DEADLOAD,
SLOT AT WINDLOAD



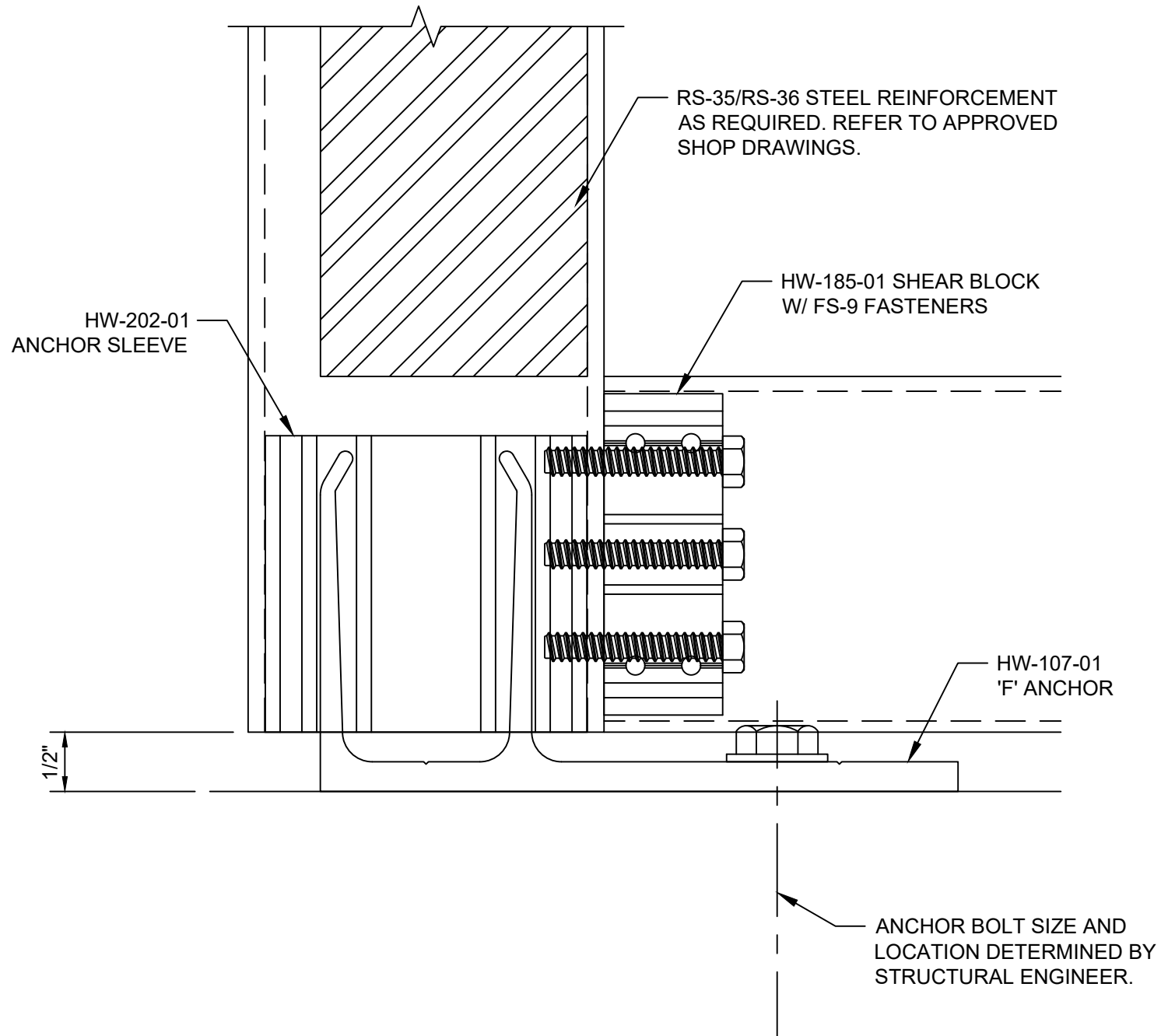
Reliance™ StormMax® High Performance
Steel Anchoring at Face of Slab - M9644



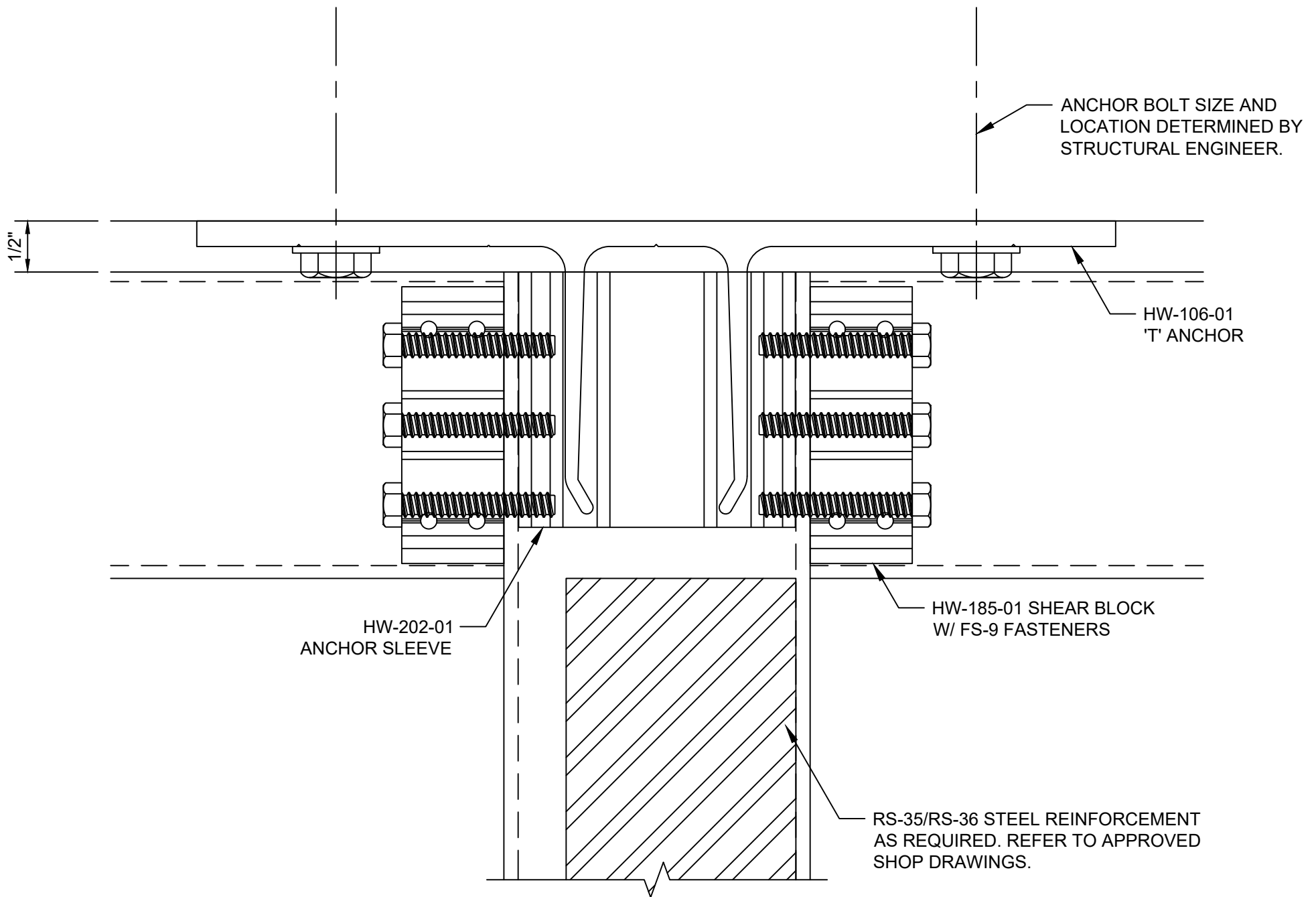
Reliance™ StormMax® High Performance Steel Reinforcement - M9667



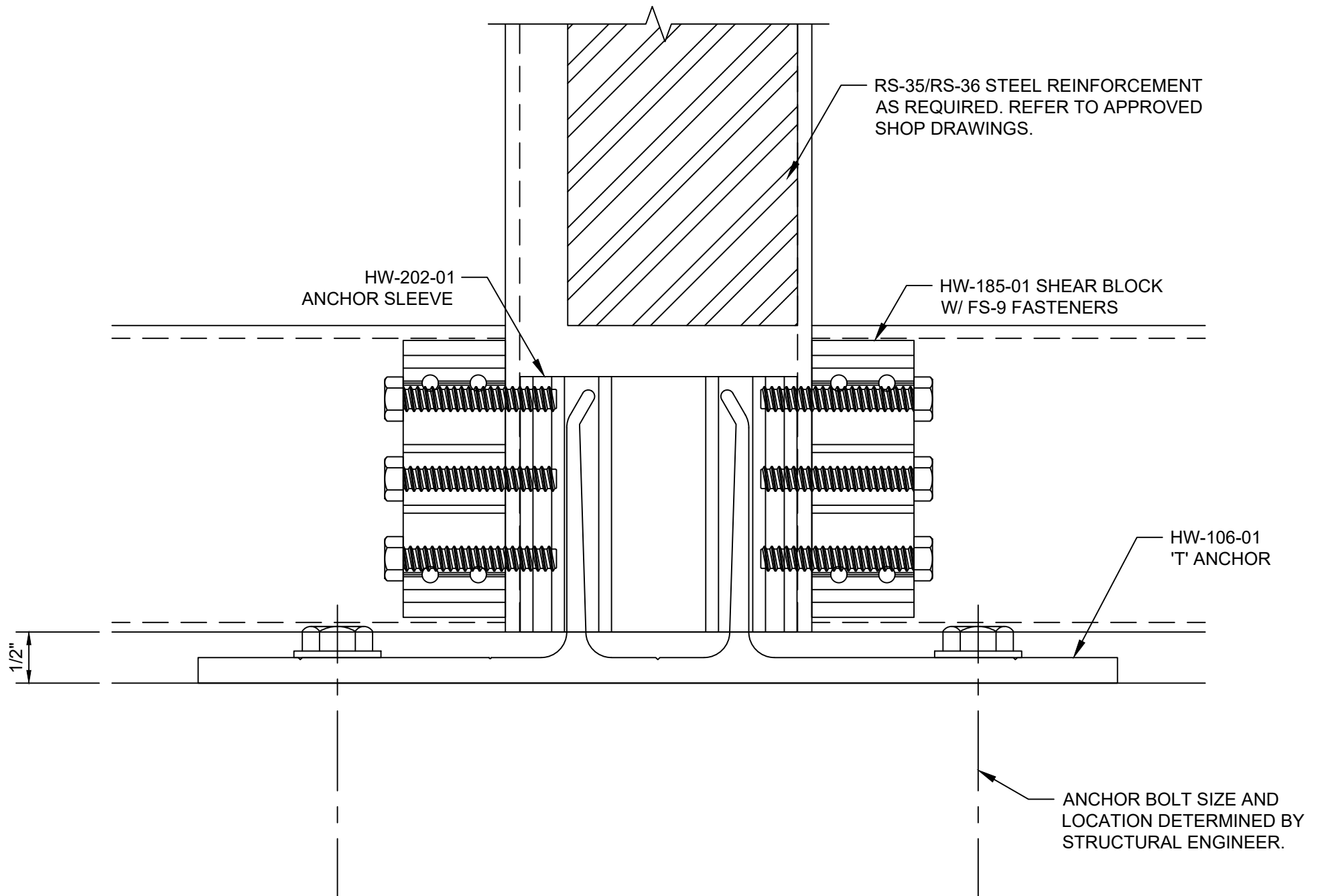
Reliance™ StormMax® High Performance Jamb Anchoring at Head - M9671



Reliance™ StormMax® High Performance
Jamb Anchoring at Sill - M9672



Reliance™ StormMax® High Performance Mullion Anchoring at Head - M9673



Reliance™ StormMax® High Performance Mullion Anchoring at Sill - M9674