



Reliance™-SS Screw Spline Curtain Wall— outside glazed, front set pressure wall curtain wall system by Oldcastle BuildingEnvelope®

To satisfy demands for the reduction of field labor, Oldcastle BuildingEnvelope® has developed a screw spline version of its popular Reliance™ Curtain Wall System. The Reliance™-SS is an **outside glazed, front set pressure wall curtain wall system** which offers screw spline assembly of frames and the ability to shop seal the frame before shipping to the project site. The Reliance™-SS Curtain Wall System is available in 6", 7-1/4" and 10-1/8" depths, **using either captured or structural silicone glazed verticals**. This system has dual-color finish capability and allows for entrance door and operable window adaptability.

Features

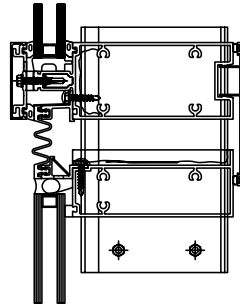
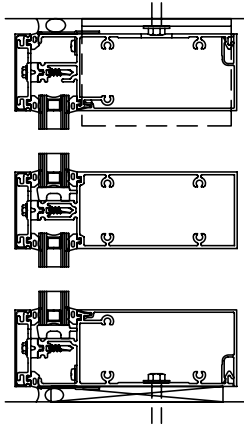


Lear Corporation, Southfield, MI
Architect: Giffels Associates, Inc.

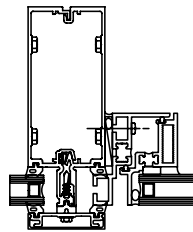
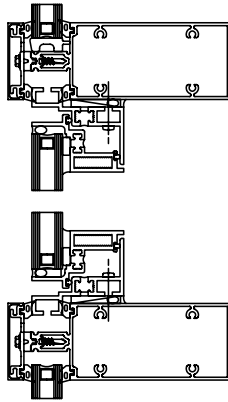
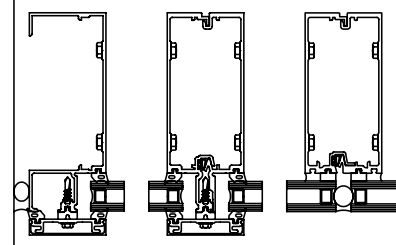
- Split vertical members for screw spline joinery and shop assembly and sealing
- System dimensions: 2-1/2" sightline available in three depths: 6", 7-1/4" and 10-1/8"
- Front set, outside glazed configuration
- Captured and SSG (structural silicone glazed) vertical mullions
- Optional limited pre-glazing
- Thermally broken system
- Integrated Solar Eclipse™ sunshade and Solar Shelf™ light shelf
- Stack horizontals for up to 3/4" live load deflection
- Standard ventilated cavity horizontals for back pan and shadow box conditions
- Accommodates projected and casement vents
- Accommodates low profile or flush door frames for entrance doors
- Factory-painted Kynar 500®/Hylar 5000® finishes, meeting all provisions of AAMA 2605
- Factory-anodized finishing



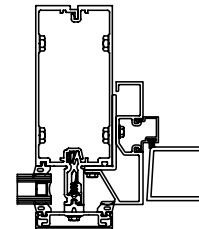
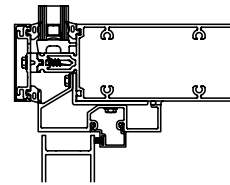
Standard Details



Standard Details



ZS-30 Operable Windows



Doors Details

Performance

- Air Infiltration: <.06 CFM/SQ FT @ 6.24 PSF per ASTM E283
- Static Water: 15 PSF per ASTM E331
- Dynamic Water: 15 PSF per AAMA 501.1
- Deflection Load: 40 PSF per ASTM E330
- Structural Load: 60 PSF per ASTM E330
- Seismic: Three levels of deflection per AAMA 501.4
- STC per ASTM E90:
37 with laminated glass
33 with clear glass
- OITC per ASTM E90:
32 with laminated glass
37 with clear glass
- Thermal Cycling per AAMA 501.5:
3 cycles (180° F hot cycle, 0° F cold cycle)
- Thermal Performance per AAMA 1503 for clear 1" insulating glass:
U-factor = 0.67 Captured and SS
CRF = 65 Captured, 74 SSG
- Thermal Performance per AAMA 1503 for Low-E 1" insulating glass:
U-factor = 0.43 Captured and 0.34 SSG
CRF = 68 Captured and SSG
- NFRC Certified and Thermal Performance Characteristics per AAMA 507