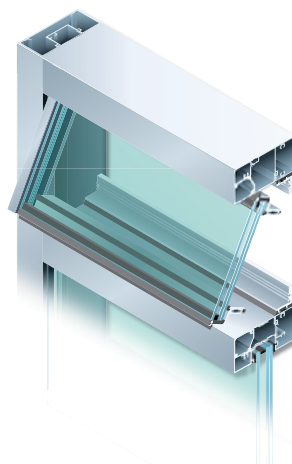


ZS-2750 BlastMax®— Zero Sightline blast-resistant project out window system

After extensive blast arena testing, the ZS-2750 project out window system has **proven to be a high performance system** that meets the most stringent standards of ASTM, GSA and UFC. This system is designed to accommodate the desire for fresh air ventilation without the sightline of a conventional inserted aluminum window.

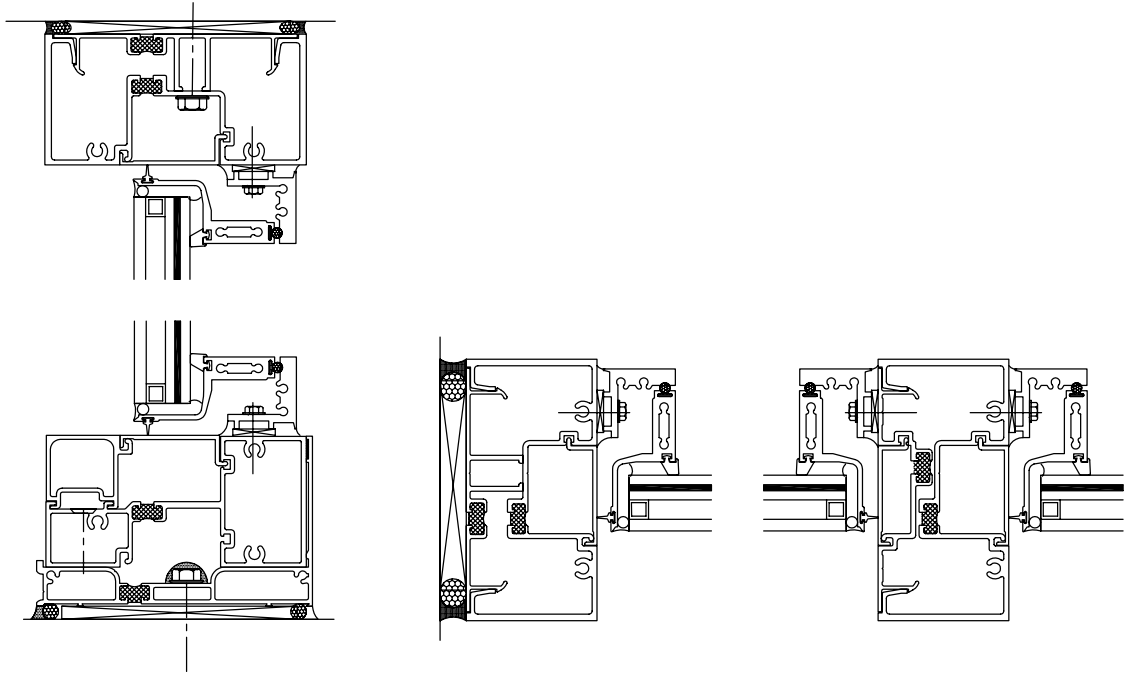


Features

- System dimensions: 3" depth
- Interior Sightline: 1-3/8"
- Tubular sash shapes mitered and mechanically fastened
- Frame corners mitered and mechanically fastened
- Equal leg frame inserts into any storefront or wall system
- Sash exterior glazed with spacer gasket and structural silicone
- Factory-painted Kynar® 500/Hylar® 5000 finishes, meeting all provisions of AAMA 2605
- Factory anodized finishing
- ASTM F1642 compliant
- UFC (DoD) 4-010-01 compliant
- GSA/ISC compliant



Details



Horizontal Details

Vertical Details

Performance

- Air Infiltration: <math><0.30</math> CFM/SQ FT (1.57 PSF) per ASTM E283
- Static Water: 15 PSF per ASTM E331
- Deflection Load: ± 60 PSF per ASTM E330
- Structural Load ± 90 PSF per ASTM E330
- ASTM F 1642 - No hazard
- UFC 4-010-01 - level of protection - Medium
- GSA Performance Condition - 2

