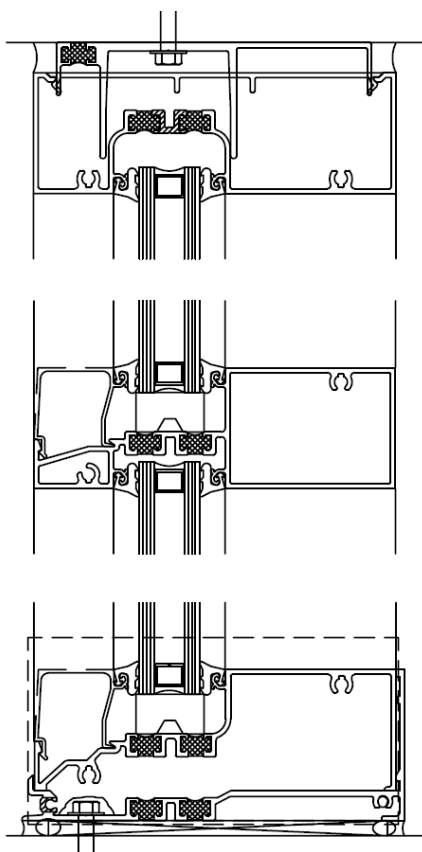




Series 6000 XT storefront— 2" x 6" thermally efficient storefront system by Oldcastle BuildingEnvelope®

The Series 6000 XT storefront system combines superior thermal performance with the simplicity and convenience of a standard storefront. The system incorporates dual polyurethane thermal breaks throughout the system to improve energy efficiency and condensation resistance.

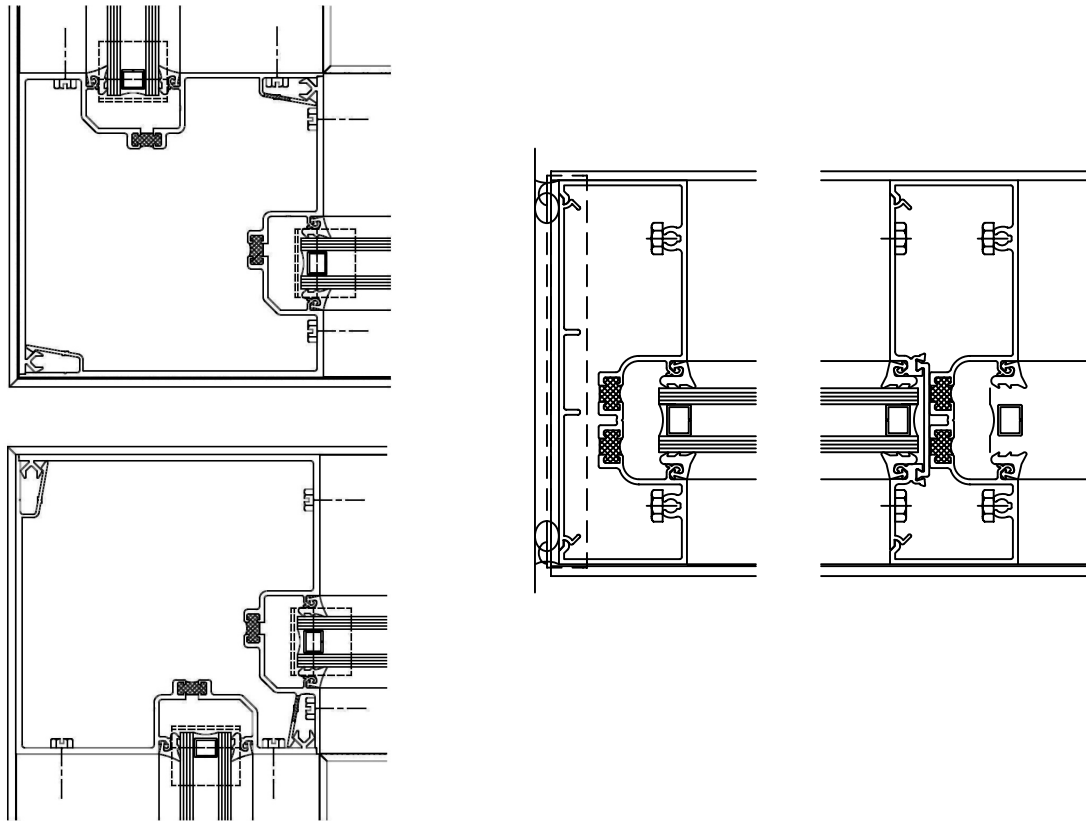
Features



- Overall system dimensions: 2" x 6"
- Center Set glazing configuration with screw spline assembly
- High performance sill receptor requires no additional anchoring of sill member
- Thermally broken head anchor clip
- Outside glazing
- Superior thermal performance provided through dual polyurethane thermal breaks
- Complete 90° corner mullions
- Accommodates ZS-2750 vents
- Factory painted Kynar 500®/Hylar 5000® finishes, meeting all provisions of AAMA 2605
- Factory anodized finishing



Details



Center Set

Performance

▪ Air Infiltration:	<.06 CFM/SQ FT (6.24 PSF) per ASTM E283
▪ Static Water:	10 PSF per ASTM E331
▪ Deflection Load:	40 PSF per ASTM E330
Structural Load:	60 PSF per ASTM E330
▪ STC:	32 (2 x 1/4", 1/2" air space) 36 (2 x 1/4" laminated, 1/2" air space)
▪ OITC:	26 (2 x 1/4", 1/2" air space) 29 (2 x 1/4" laminated, 1/2" air space)
▪ Thermal Performance per AAMA 1503 for Low-E 1" insulating glass:	
	U-factor = 0.32, Frame CRF = 73
▪ NFRC Certified	
▪ Thermal Performance Characteristics per AAMA 507	