

**Oldcastle** BuildingEnvelope®

291 M Street ▪ Perrysburg, OH 43551 ▪ USA  
(419) 666-2000 ▪ obe.com

## STRUCTURAL GLASS SYSTEMS

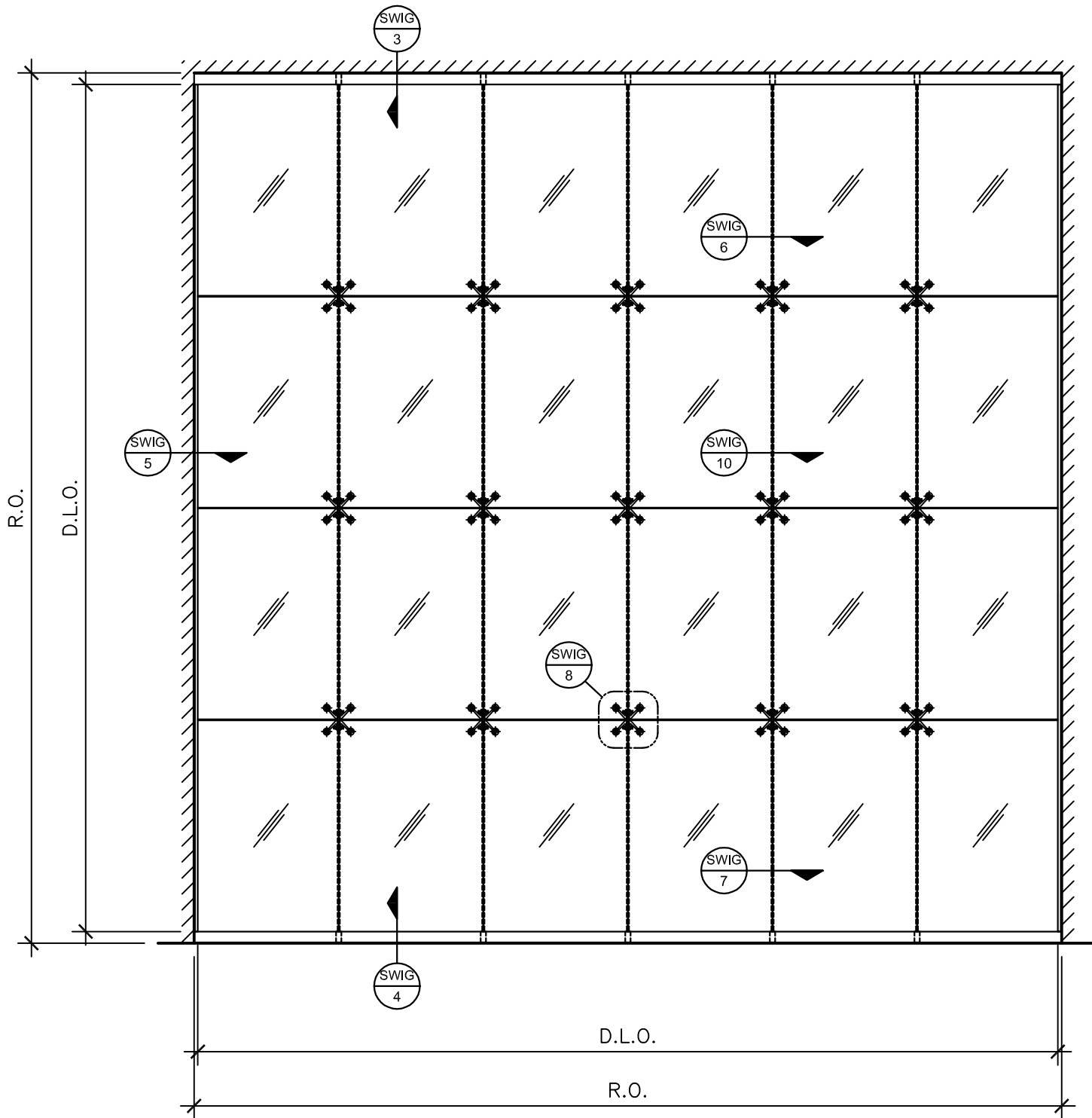
### STACKWALL® - INSULATED GLASS

#### Table of Contents

Page 1 -	Elevation
Page 2 -	Section
Page 3 -	Mainplate Head
Page 4 -	Mainplate Sill
Page 5 -	Mainplate Jamb
Page 6 -	Mainplate at Fin
Page 7 -	Mainplate at Fin Sill
Page 8 -	Elevation at Fitting
Page 9 -	Section at Fitting
Page 10 -	Mainplate at Splice Plate
Page 11 -	Section at Splice Plate
Page 12 -	Section at Fin Head
Page 13 -	Section at Fin Sill
Page 14 -	Fin Head
Page 15 -	Fin Sill

#### GENERAL NOTES:

1. Architect to provide design wind loads for project.
2. Glass sizes are to be determined by Oldcastle BuildingEnvelope®. Architect to provide glass specifications as required for project.
3. Oldcastle BuildingEnvelope® provides all glass, fittings, channel, shop drawings and engineering calculations for the structural glass system. Oldcastle BuildingEnvelope® does not provide installation.
4. Oldcastle BuildingEnvelope® is not responsible for the steel structure or design thereof.
5. All structural drawings for the project must be submitted and reviewed by Oldcastle BuildingEnvelope® for coordination purposes.



R.O. ROUGH OPENING  
D.L.O. DAY LIGHT OPENING  
G.S. GLASS SIZE

**NOTE:**  
PANEL SIZES ARE TO BE DETERMINED  
BY Oldcastle BuildingEnvelope®  
PENDING CALCULATIONS.

SCALE: 1/4" = 1'-0"

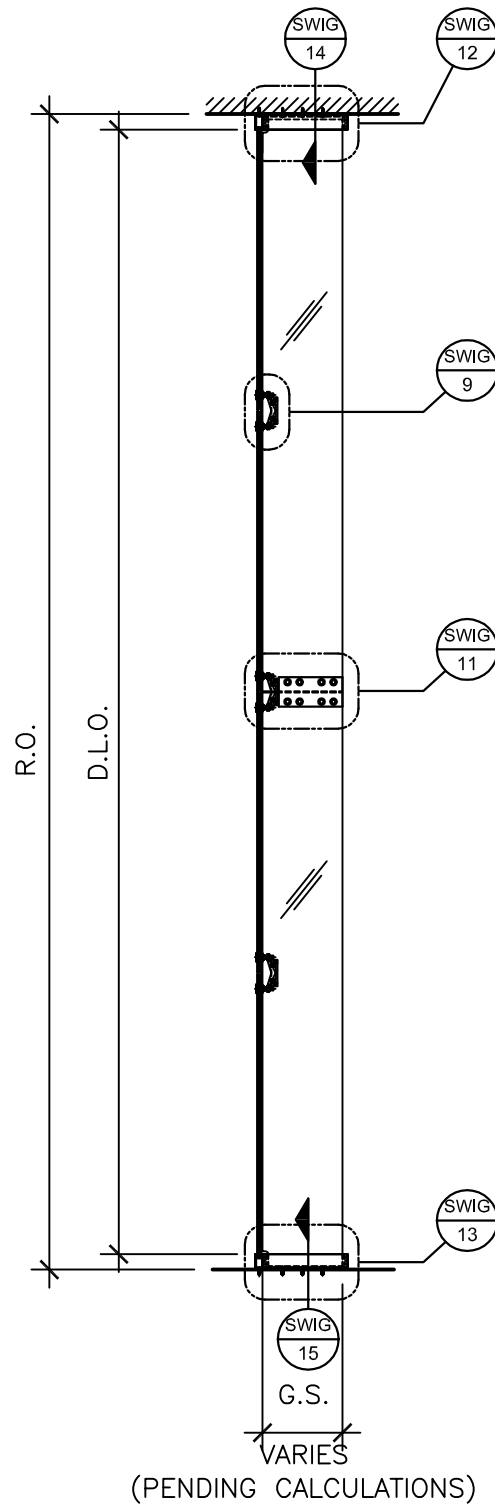


**Oldcastle BuildingEnvelope®**

291 M Street • Perrysburg, OH 43551 • USA  
(419) 666-2000 • obe.com

STACKWALL® - INSULATED GLASS  
ELEVATION

1



**NOTE:**  
FIN SIZES ARE TO BE DETERMINED  
BY Oldcastle BuildingEnvelope®  
PENDING CALCULATIONS.

R.O. ROUGH OPENING  
D.L.O. DAY LIGHT OPENING  
G.S. GLASS SIZE

SCALE: 1/4" = 1'-0"

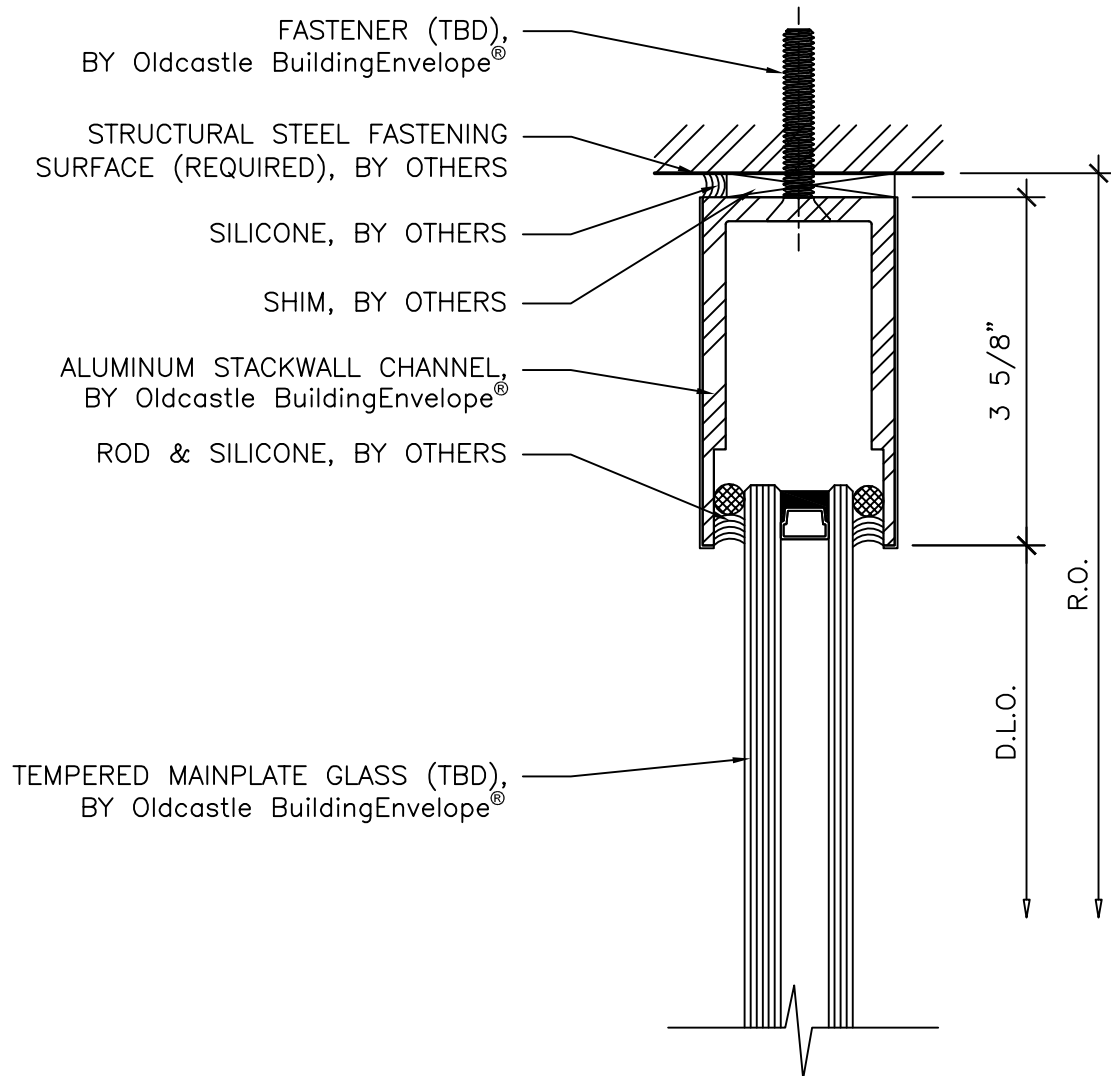


**Oldcastle BuildingEnvelope®**

291 M Street • Perrysburg, OH 43551 • USA  
(419) 666-2000 • obe.com

**STACKWALL® - INSULATED GLASS  
SECTION**

**2**



R.O. ROUGH OPENING  
D.L.O. DAY LIGHT OPENING  
G.S. GLASS SIZE

SCALE: 6" = 1'-0"

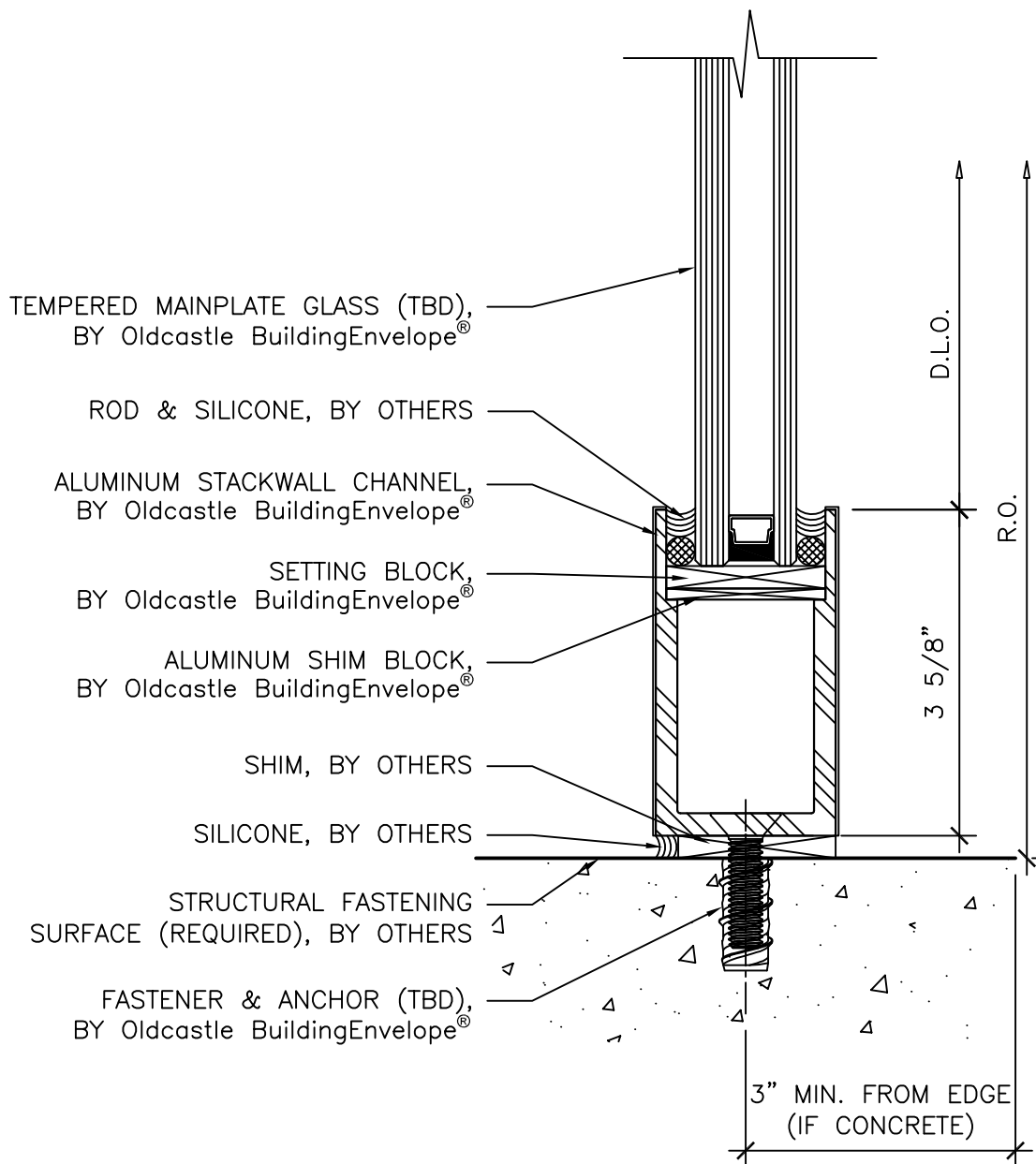


**Oldcastle BuildingEnvelope®**

291 M Street • Perrysburg, OH 43551 • USA  
(419) 666-2000 • obe.com

**STACKWALL® - INSULATED GLASS  
MAINPLATE HEAD**

**3**



R.O. ROUGH OPENING  
D.L.O. DAY LIGHT OPENING  
G.S. GLASS SIZE

SCALE: 6" = 1'-0"

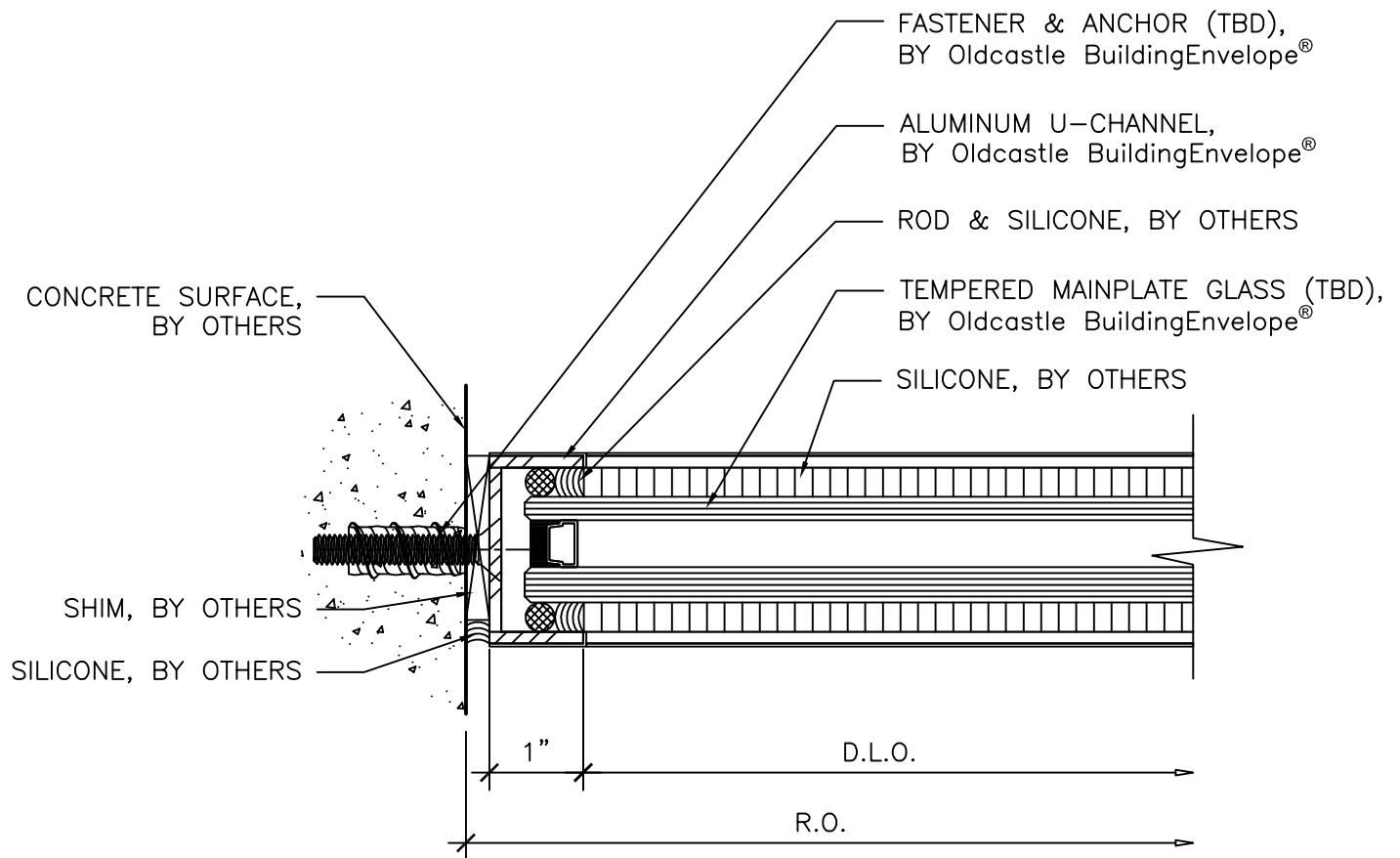


**Oldcastle BuildingEnvelope®**

291 M Street • Perrysburg, OH 43551 • USA  
(419) 666-2000 • obe.com

**STACKWALL® - INSULATED GLASS  
MAINPLATE SILL**

**4**



R.O. ROUGH OPENING  
D.L.O. DAY LIGHT OPENING  
G.S. GLASS SIZE

SCALE: 6" = 1'-0"

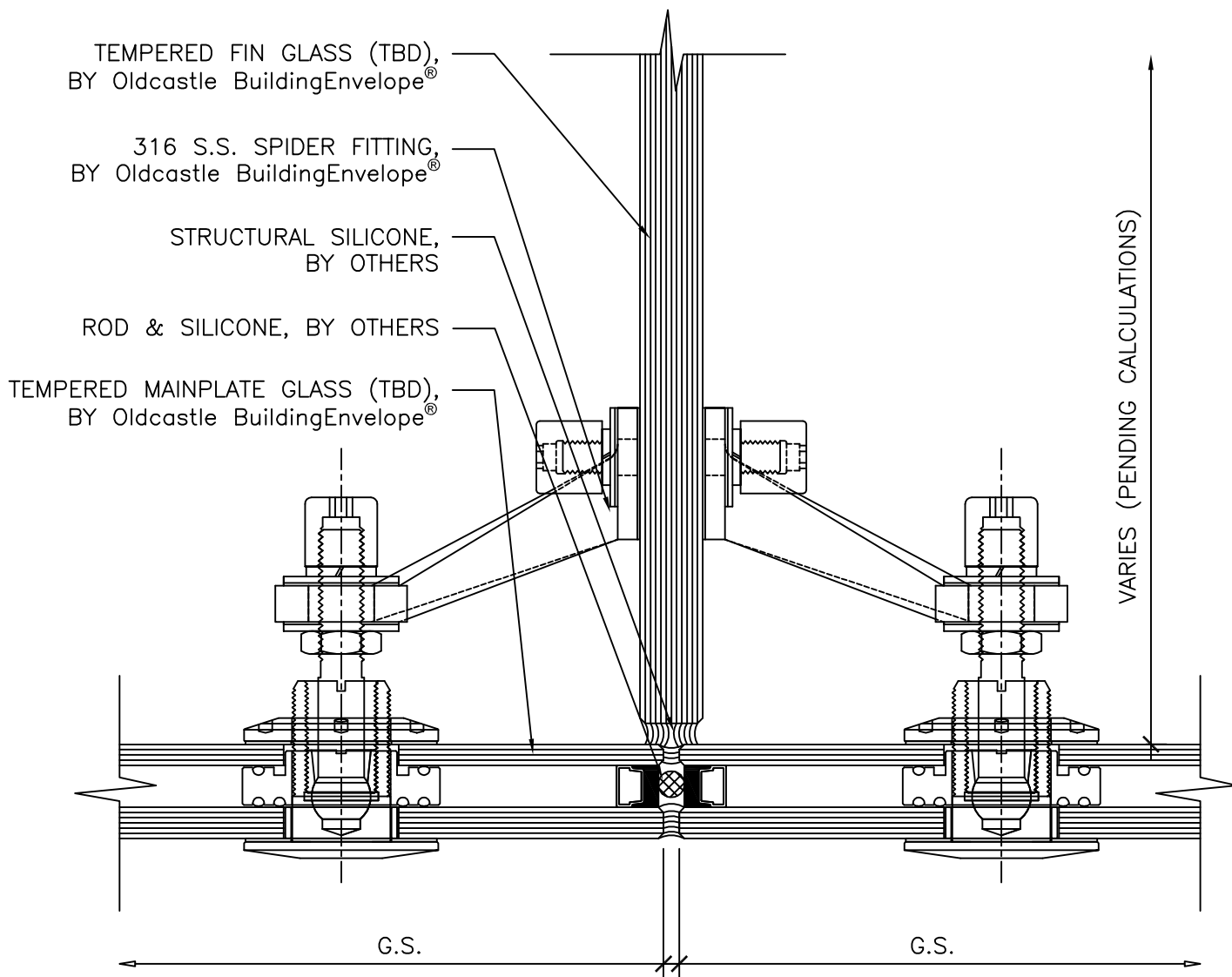


**Oldcastle BuildingEnvelope®**

291 M Street • Perrysburg, OH 43551 • USA  
(419) 666-2000 • obe.com

**STACKWALL® - INSULATED GLASS  
MAINPLATE JAMB**

**5**



**NOTE:**  
SPIDER FITTING STYLE / TYPE  
TO BE DETERMINED BY  
Oldcastle BuildingEnvelope®  
AND MAY VARY FROM DETAIL.

R.O. ROUGH OPENING  
D.L.O. DAY LIGHT OPENING  
G.S. GLASS SIZE

SCALE: 6" = 1'-0"

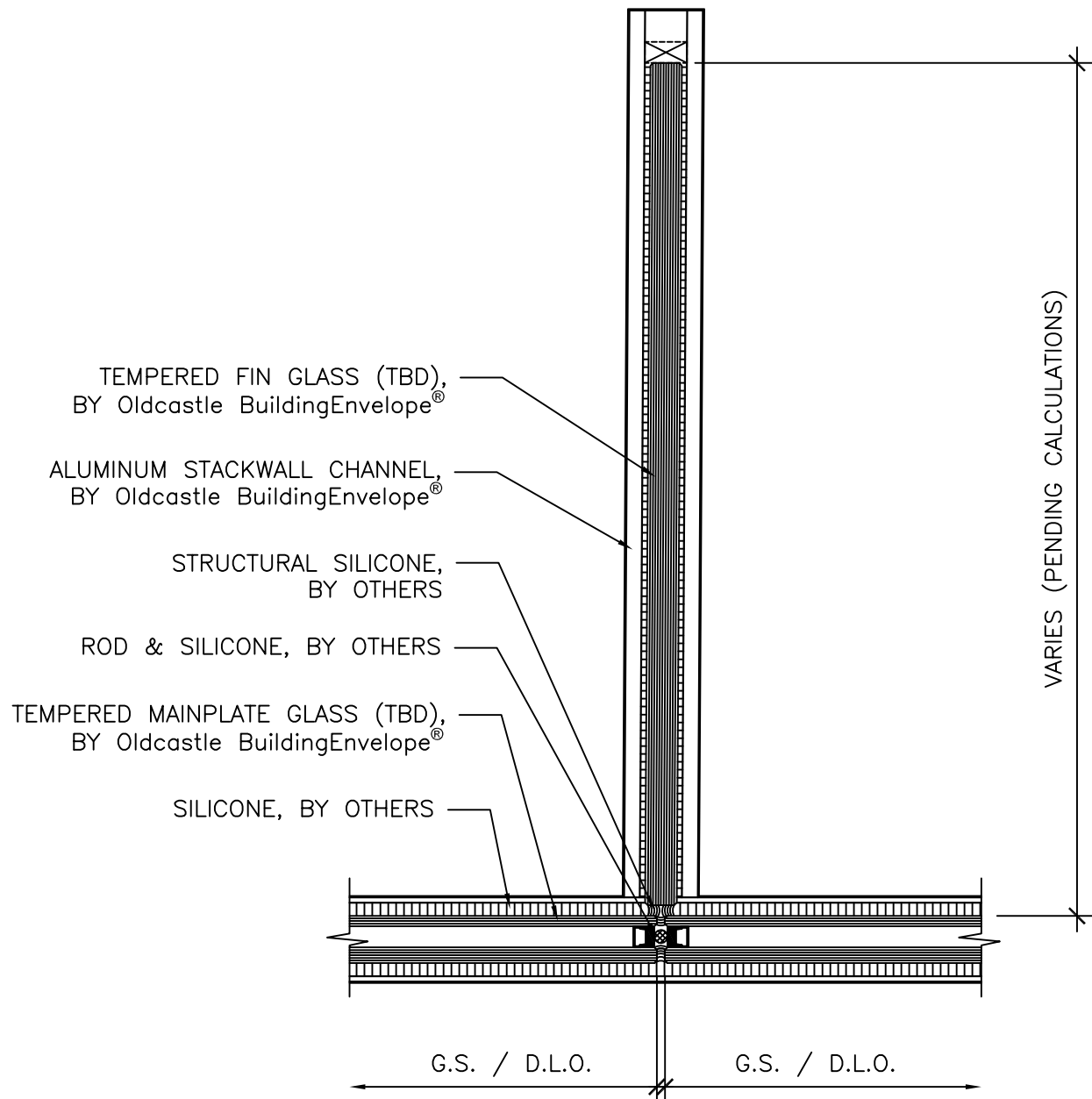


**Oldcastle BuildingEnvelope®**

291 M Street • Perrysburg, OH 43551 • USA  
(419) 666-2000 • obe.com

**STACKWALL® - INSULATED GLASS  
MAINPLATE AT FIN**

**6**



R.O. ROUGH OPENING  
D.L.O. DAY LIGHT OPENING  
G.S. GLASS SIZE

SCALE: 3" = 1'-0"



**Oldcastle BuildingEnvelope®**

291 M Street • Perrysburg, OH 43551 • USA  
(419) 666-2000 • obe.com

STACKWALL® - INSULATED GLASS  
MAINPLATE AT FIN SILL

7

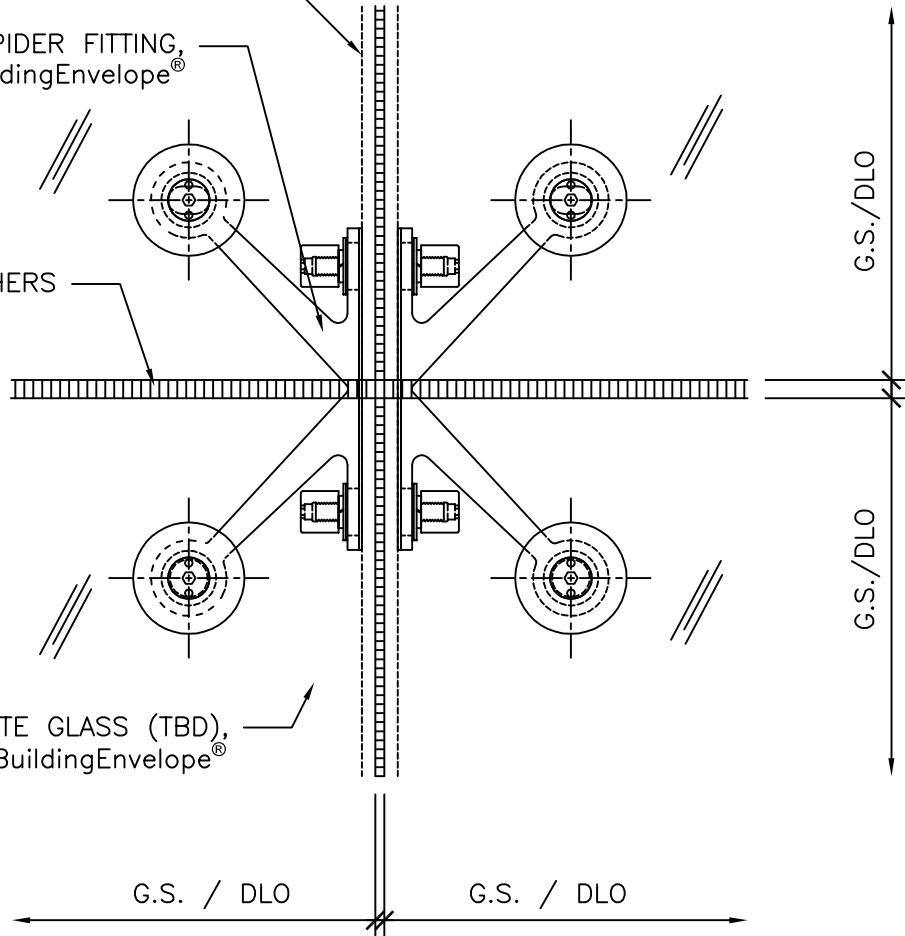


TEMPERED FIN GLASS BEYOND (TBD),  
BY Oldcastle BuildingEnvelope®

316 S.S. SPIDER FITTING,  
BY Oldcastle BuildingEnvelope®

SILICONE, BY OTHERS

TEMPERED MAINPLATE GLASS (TBD),  
BY Oldcastle BuildingEnvelope®



NOTE:  
SPIDER FITTING STYLE / TYPE  
TO BE DETERMINED BY  
Oldcastle BuildingEnvelope®  
AND MAY VARY FROM DETAIL.

R.O. ROUGH OPENING  
D.L.O. DAY LIGHT OPENING  
G.S. GLASS SIZE

SCALE: 3" = 1'-0"

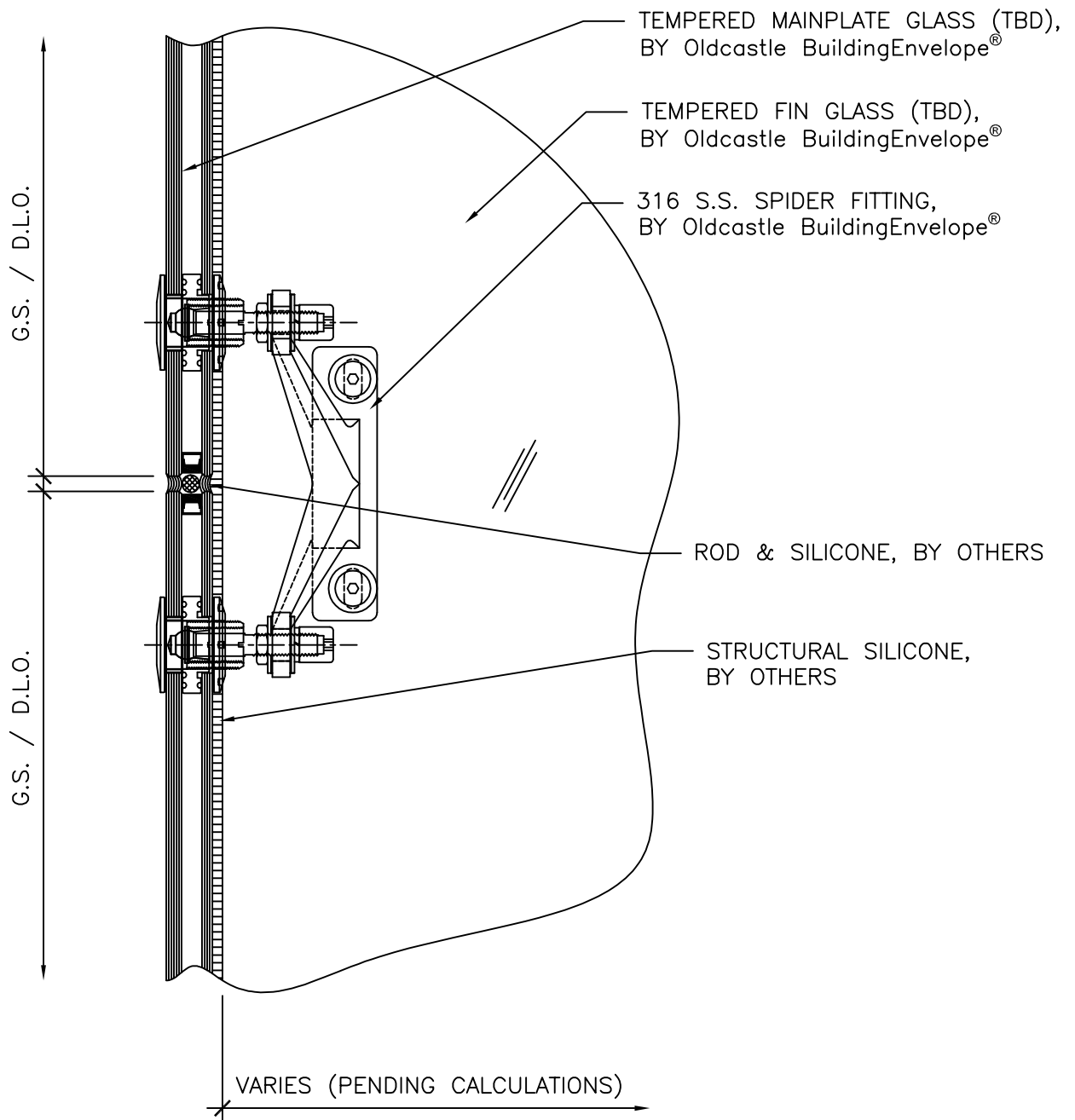


**Oldcastle BuildingEnvelope®**

291 M Street • Perrysburg, OH 43551 • USA  
(419) 666-2000 • obe.com

STACKWALL® - INSULATED GLASS  
ELEVATION AT FITTING

8



**NOTE:**  
SPIDER FITTING STYLE / TYPE  
TO BE DETERMINED BY  
Oldcastle BuildingEnvelope®  
AND MAY VARY FROM DETAIL.

R.O. ROUGH OPENING  
D.L.O. DAY LIGHT OPENING  
G.S. GLASS SIZE

SCALE: 3" = 1'-0"

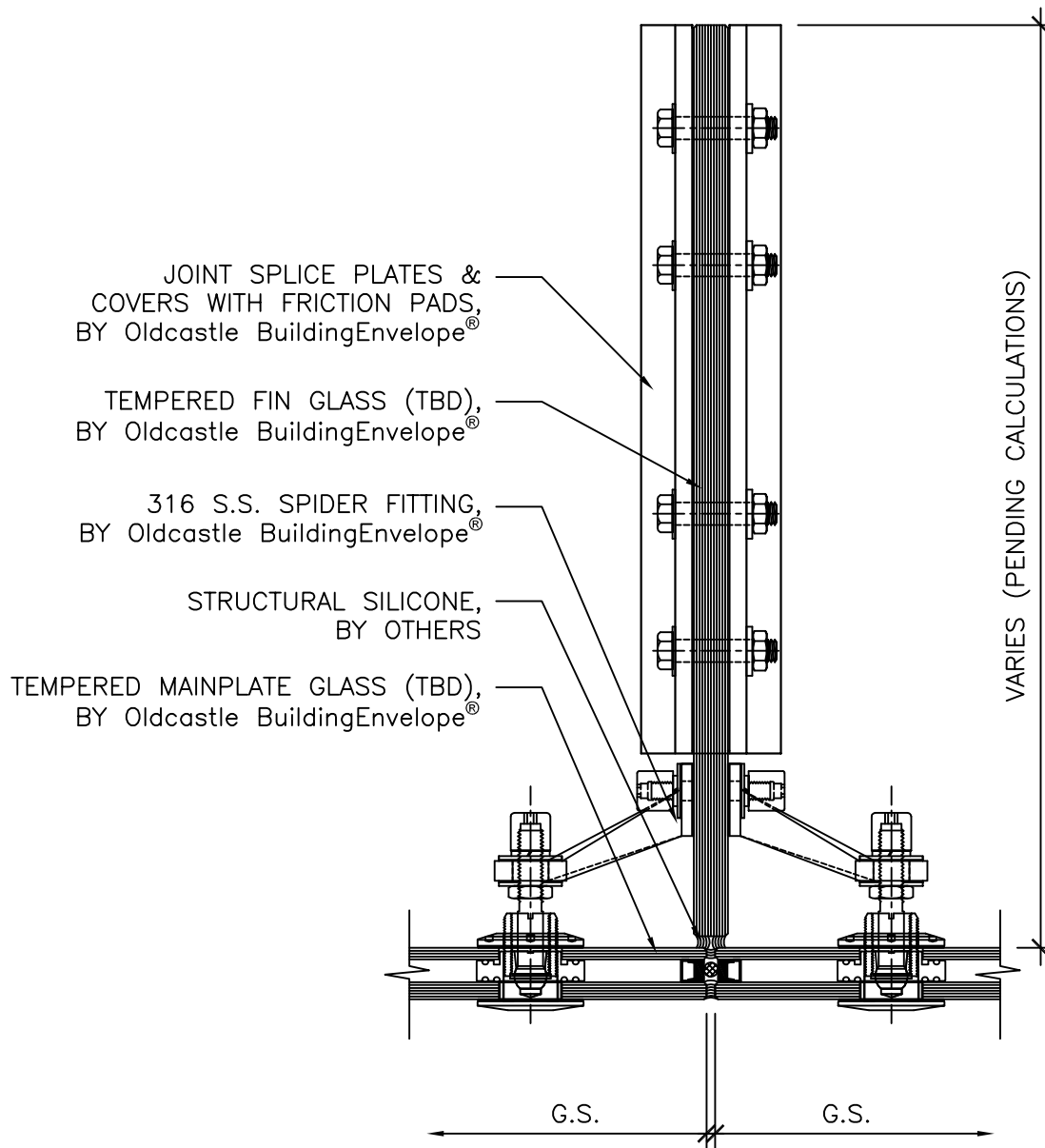


**Oldcastle BuildingEnvelope®**

291 M Street • Perrysburg, OH 43551 • USA  
(419) 666-2000 • obe.com

**STACKWALL® - INSULATED GLASS  
SECTION AT FITTING**

**9**



**NOTE:**  
SPIDER FITTING STYLE / TYPE  
TO BE DETERMINED BY  
Oldcastle BuildingEnvelope®  
AND MAY VARY FROM DETAIL.

R.O. ROUGH OPENING  
D.L.O. DAY LIGHT OPENING  
G.S. GLASS SIZE

SCALE: 3" = 1'-0"

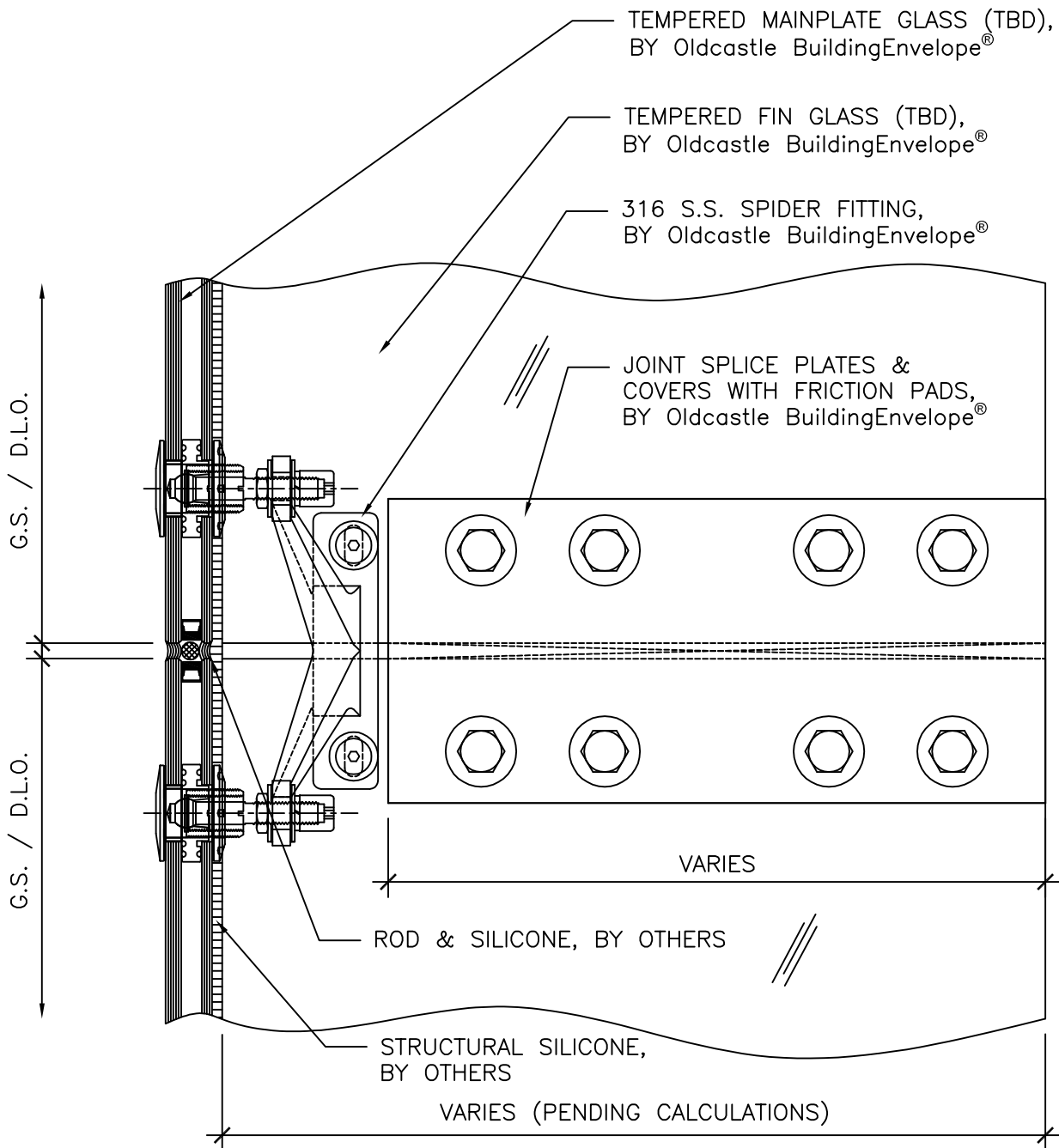


**Oldcastle BuildingEnvelope®**

291 M Street • Perrysburg, OH 43551 • USA  
(419) 666-2000 • obe.com

**STACKWALL® - INSULATED GLASS  
MAINPLATE AT SPLICE PLATE**

**10**



**NOTE:**  
SPIDER FITTING STYLE / TYPE  
TO BE DETERMINED BY  
Oldcastle BuildingEnvelope®  
AND MAY VARY FROM DETAIL.

R.O. ROUGH OPENING  
D.L.O. DAY LIGHT OPENING  
G.S. GLASS SIZE

SCALE: 3" = 1'-0"

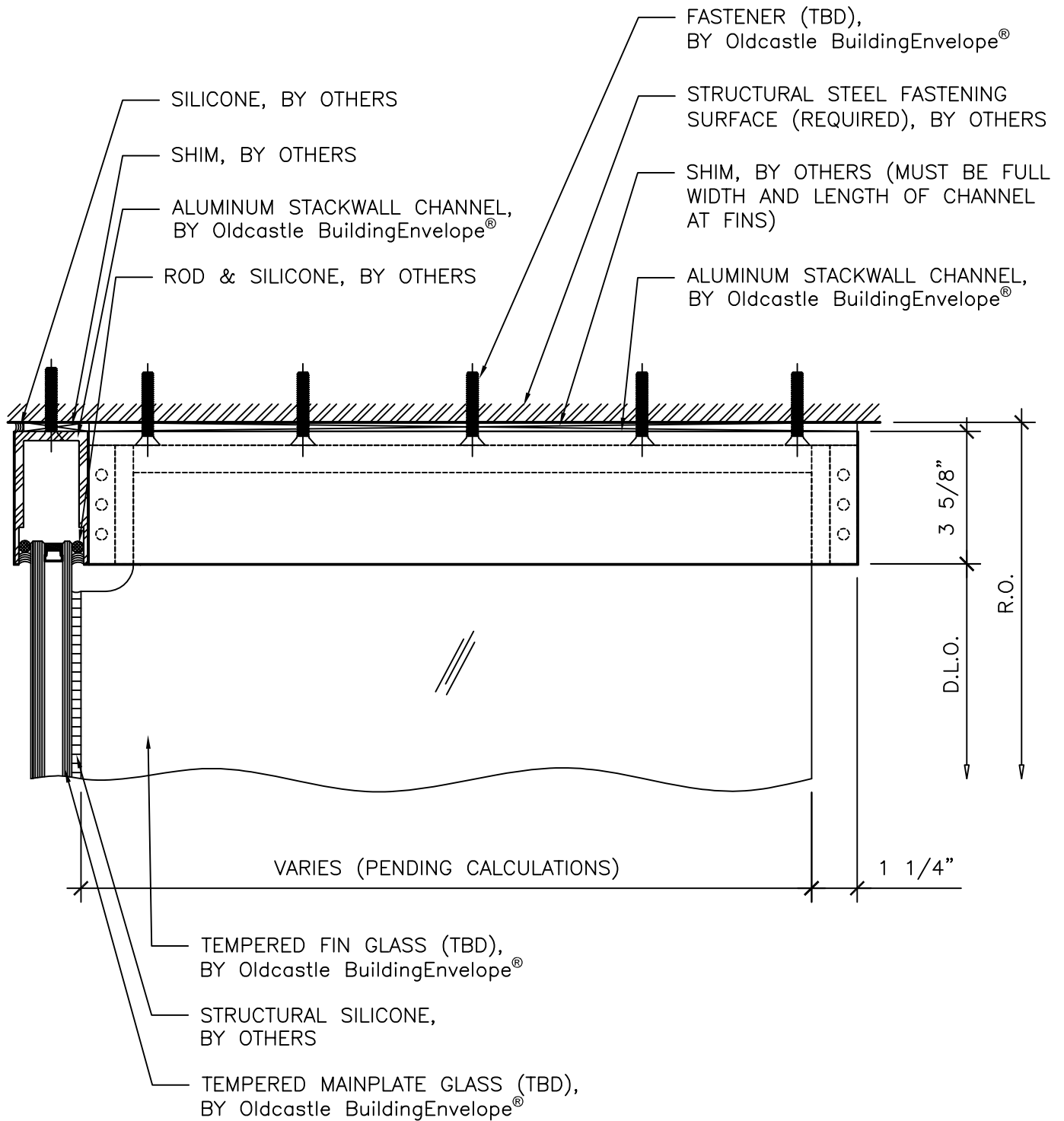


**Oldcastle BuildingEnvelope®**

291 M Street • Perrysburg, OH 43551 • USA  
(419) 666-2000 • obe.com

**STACKWALL® - INSULATED GLASS  
SECTION AT SPLICE PLATE**

**11**



R.O. ROUGH OPENING  
D.L.O. DAY LIGHT OPENING  
G.S. GLASS SIZE

SCALE: 3" = 1'-0"

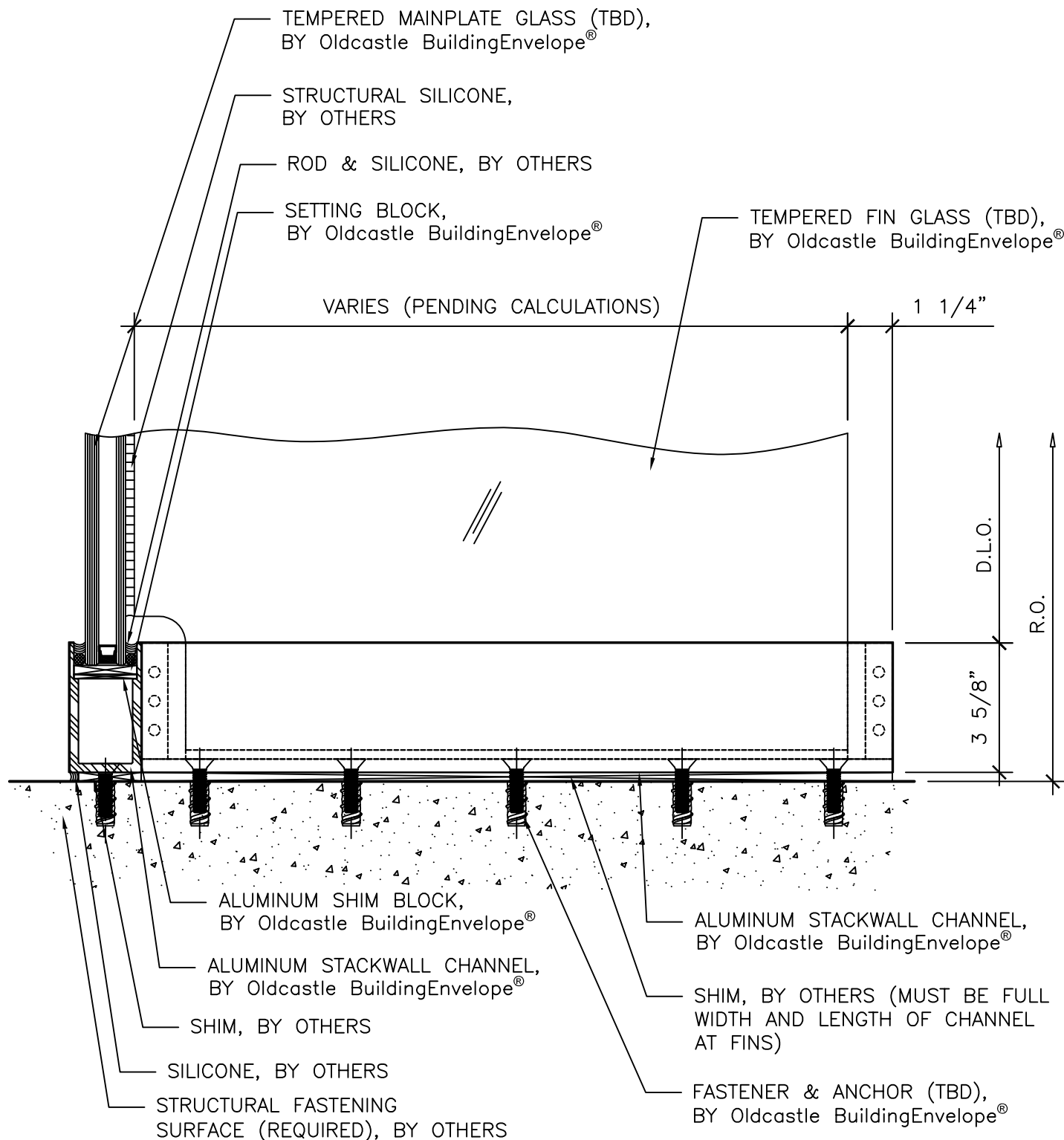


**Oldcastle BuildingEnvelope®**

291 M Street • Perrysburg, OH 43551 • USA  
(419) 666-2000 • obe.com

**STACKWALL® - INSULATED GLASS  
SECTION AT FIN HEAD**

**12**



R.O. ROUGH OPENING  
D.L.O. DAY LIGHT OPENING  
G.S. GLASS SIZE

SCALE: 3" = 1'-0"

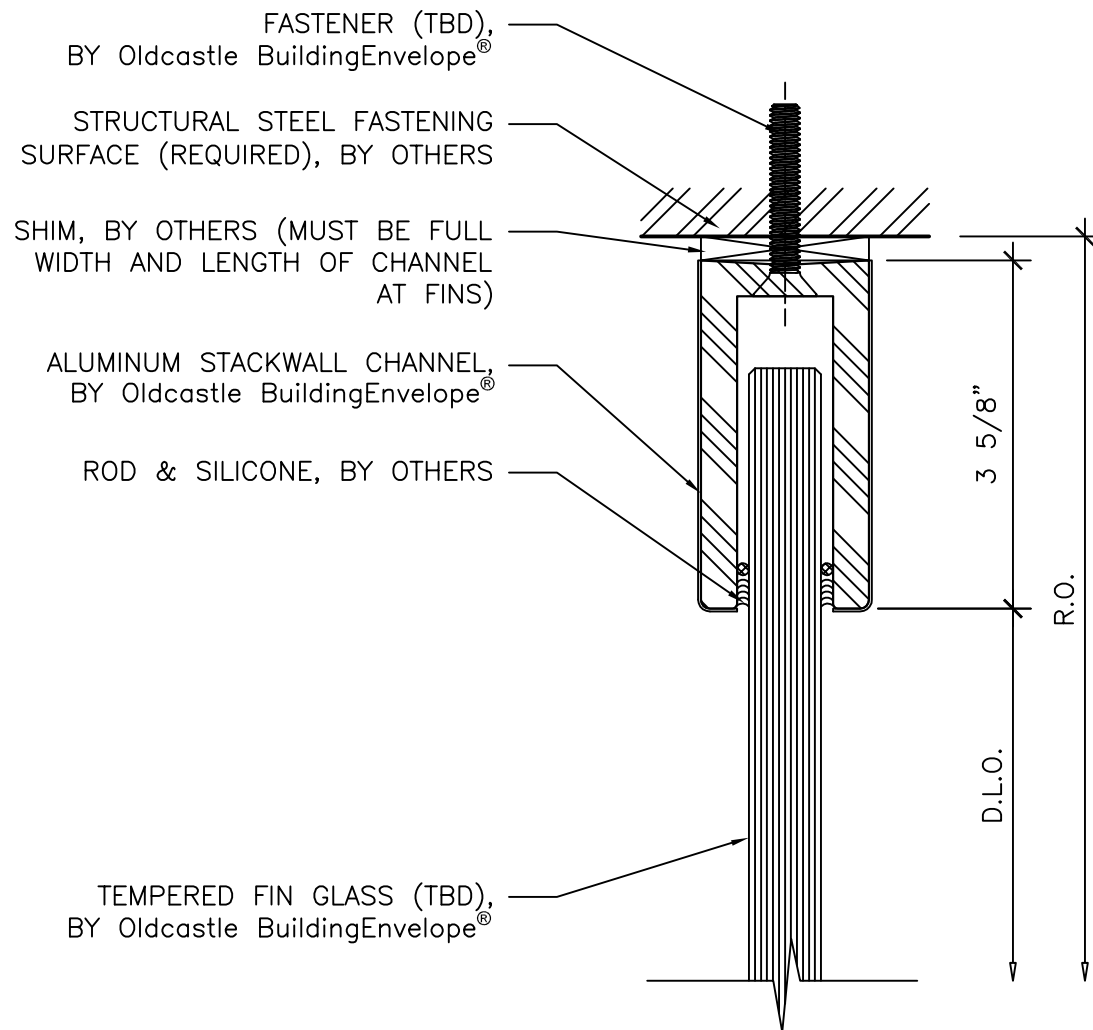


**Oldcastle BuildingEnvelope®**

291 M Street • Perrysburg, OH 43551 • USA  
(419) 666-2000 • obe.com

**STACKWALL® - INSULATED GLASS  
SECTION AT FIN SILL**

**13**



R.O. ROUGH OPENING  
D.L.O. DAY LIGHT OPENING  
G.S. GLASS SIZE

SCALE: 6" = 1'-0"

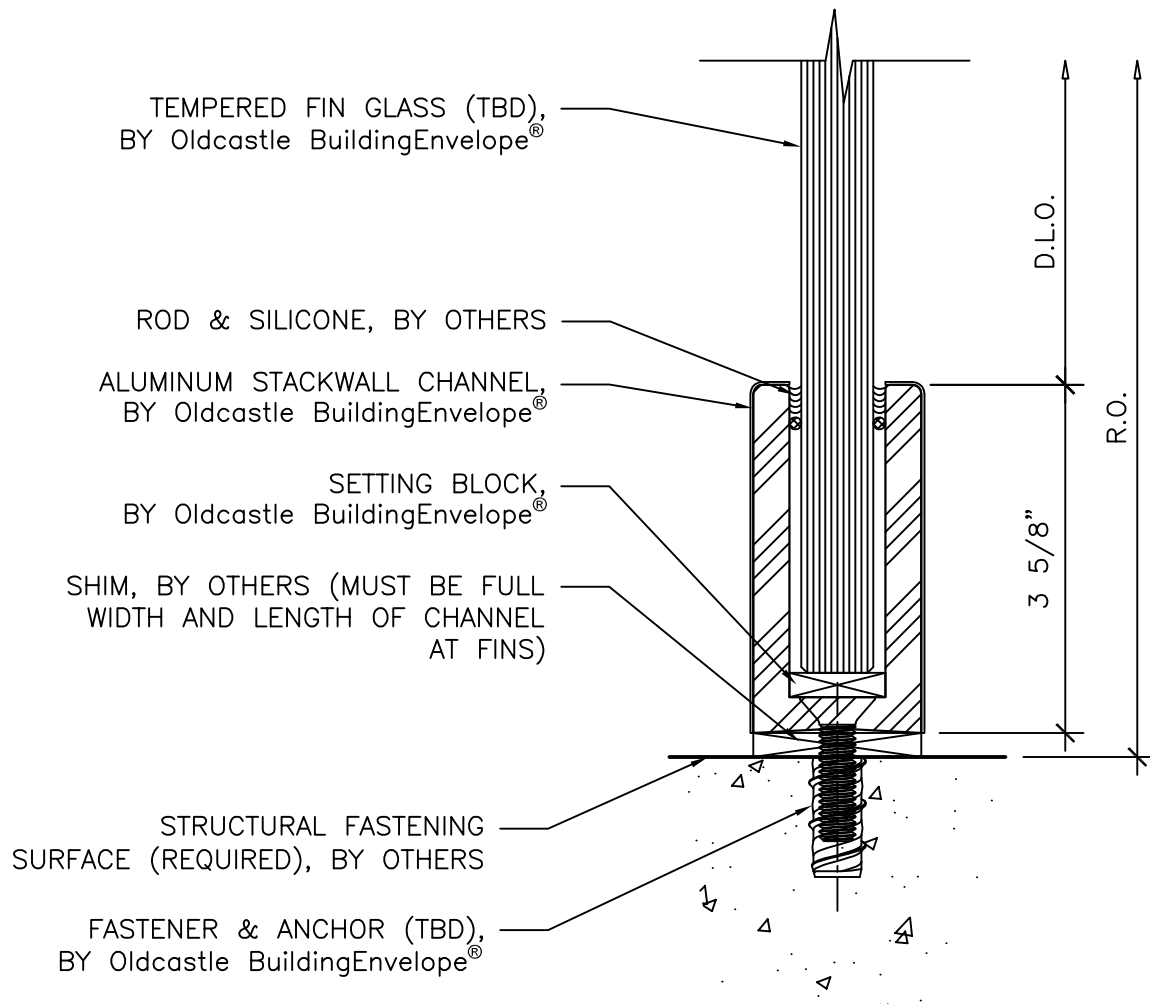


**Oldcastle BuildingEnvelope®**

291 M Street • Perrysburg, OH 43551 • USA  
(419) 666-2000 • obe.com

STACKWALL® - INSULATED GLASS  
FIN HEAD

14



R.O. ROUGH OPENING  
D.L.O. DAY LIGHT OPENING  
G.S. GLASS SIZE

SCALE: 6" = 1'-0"



**Oldcastle BuildingEnvelope®**

291 M Street • Perrysburg, OH 43551 • USA  
(419) 666-2000 • obe.com

INSULATED GLASS STACKWALL  
FIN SILL

15