

Signature Series SGHT Window Wall— Window Wall system by Oldcastle BuildingEnvelope®



Signature Series SGHT Window Wall is a factory assembled, sealed and glazed window wall product offering a variety of 1" infill options. Both 3M's™ structural glazing tape and structural silicone are available glazing options to meet glazing specifications. The Signature Series SGHT Window Wall design has reinforced polyamide thermal struts integrated into the head and sill cans to provide exceptional thermal performance. One of the most outstanding benefits of the Signature Series SGHT Window Wall is the **assembly and glazing of the window wall frames under factory controlled conditions**. This reduces field labor and minimizes on-site applied seals. The system is also designed to be installed from inside the building which leads to a quicker overall installation and eliminates the need for staging equipment during unit installation.



MiCA Towers, Chicago, IL
Architect: Wheeler Kearns Architects

Features

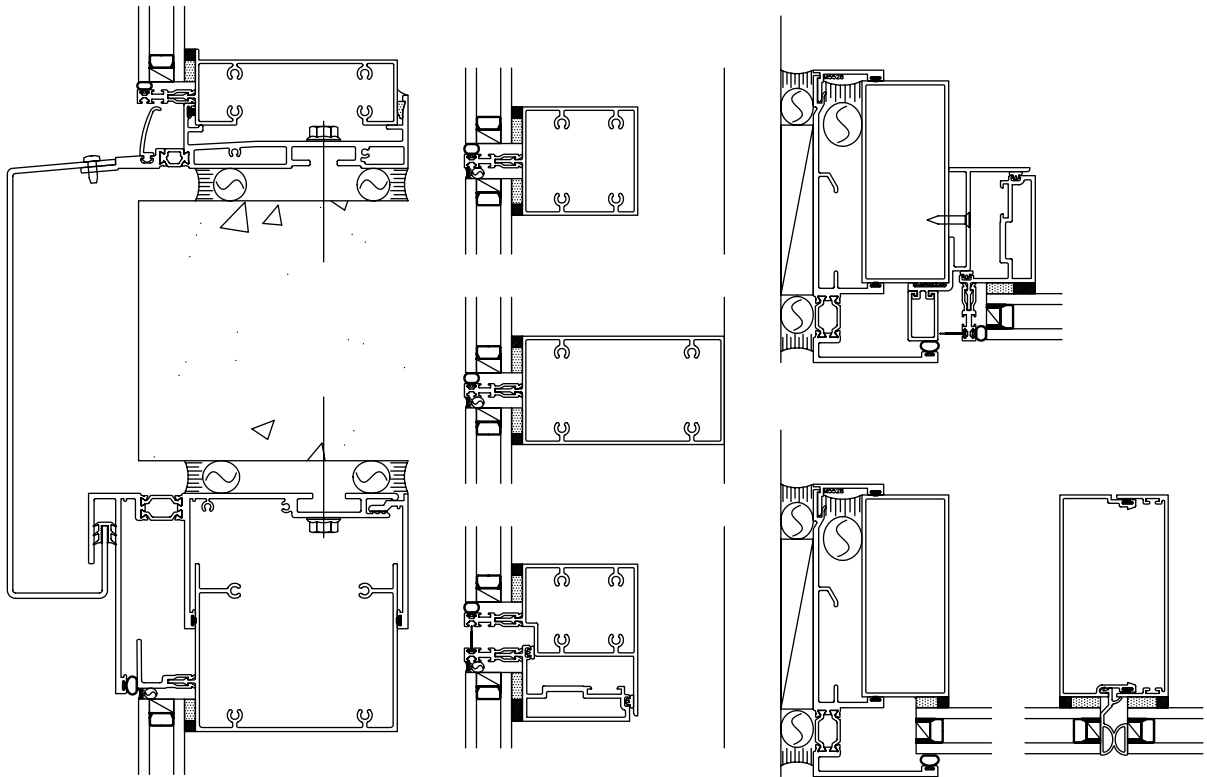
- Overall system dimensions:
2 1/2" x 6" Vertically
2 1/2" x 6" Horizontally
- +/- 1/2" total allowable vertical and horizontal movement per floor
- Factory assembled, sealed and glazed
- Installed from floor slab; staging not required
- Reduced field labor
- Enhanced thermal performance with reinforced polyamide struts
- Standardized detailing and components
- Dual finish capability
- Accepts steel reinforcing for various structural requirements
- Integral operable vents
- Factory painted, meeting all provisions of MMA2605
- Factory anodized finishing



Oldcastle BuildingEnvelope®

Engineering your creativity™

Details



See OBE Website for All Standard Details

Performance

- Air Infiltration: <math><0.10</math> CFM/sq.ft@ 6.24 PSF per ASTM E283
- Static Water: 15 PSF per ASTM E331
- Dynamic Water: 15 PSF per AAMA 501.1
- Deflection Load: 50 PSF per ASTM E330
- Structural Load: 75 PSF per ASTM E330
- STC per ASTM E90:
37 w/laminated glass
35 w/clear glass
- OITC per ASTM E90:
31 w/laminated glass
27 w/clear glass
- Thermal Performance per AAMA 1503 using Low-E 1" insulating glass:
U-factor: 0.38
CRF Glass: 71
- NFRC Certified