

# Oldcastle BuildingEnvelope®

1-866-Oldcastle (653-2278) - [www.obe.com](http://www.obe.com)

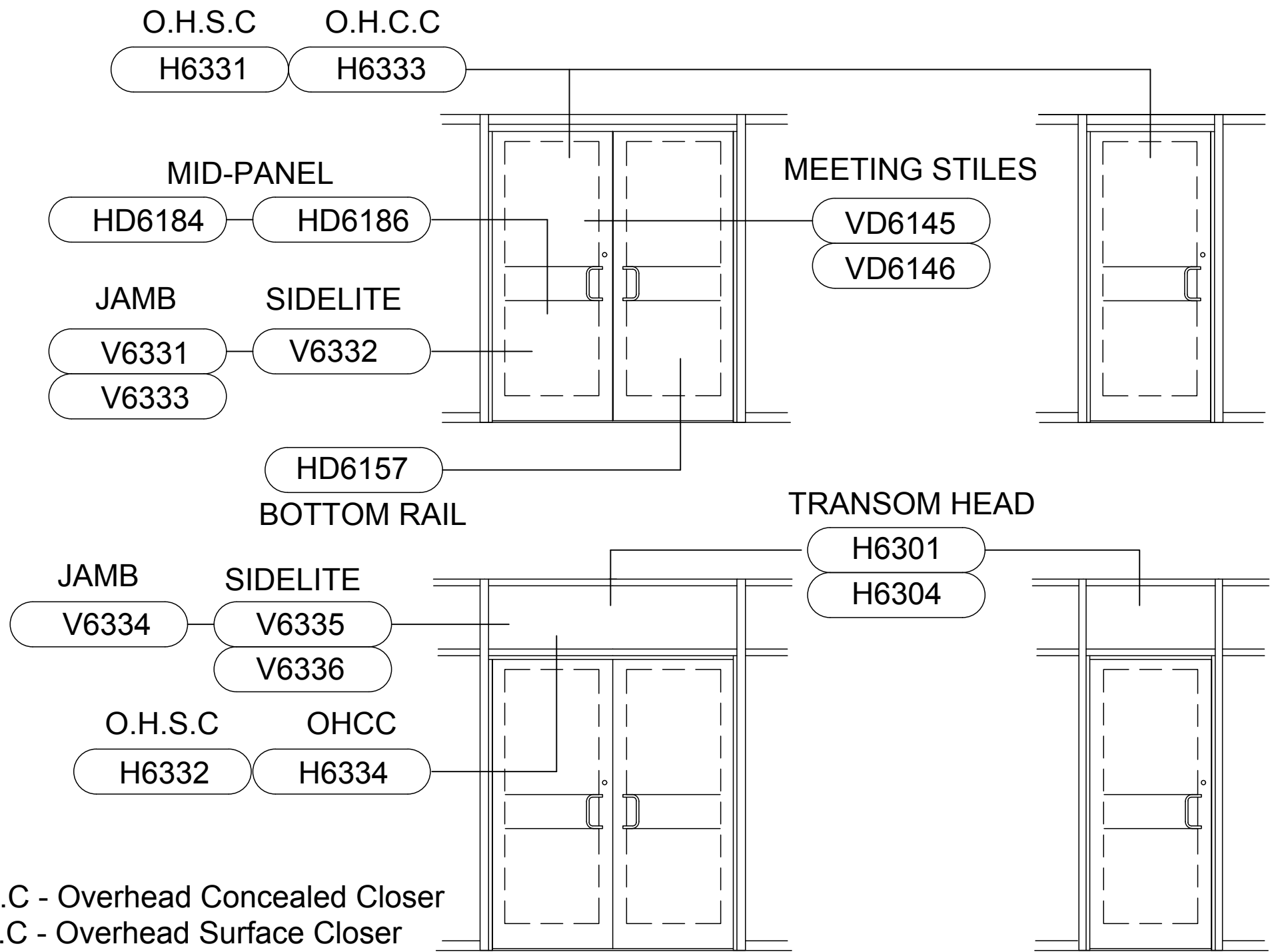
## MSD-375 / WSD-500 StormMax® Hurricane-Resistance Entrance FG-5000 StormMax® Framing - Wet/Dry Glazed

Elev-HR-MSD375-WSD500-FG5000

H6301-Transom-Head  
H6304-Transom-Head-w-Filler  
H6331-DrHd-OHSC  
H6332-DrHd-w-Transom-OHSC  
H6333-DrHd-OHCC  
H6334-DrHd-w-Transom-OHCC

V6331M-DrJb-375in-Stile  
V6331W-DrJb-5in-Stile  
V6332M-DrJbSdlite-375in-Stile  
V6332W-DrJbSdlite-5in-Stile  
V6333M-DrJb-375in-Stile-CGH  
V6333W-DrJb-5in-Stile-CGH  
V6334-Transom-Jamb  
V6335-Transom-Jamb-w-Sdlite  
V6336-Transom-Jamb-w-Sdlite-1.312inGlz

## Table of Contents

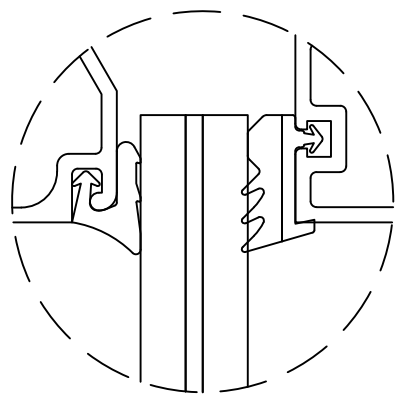
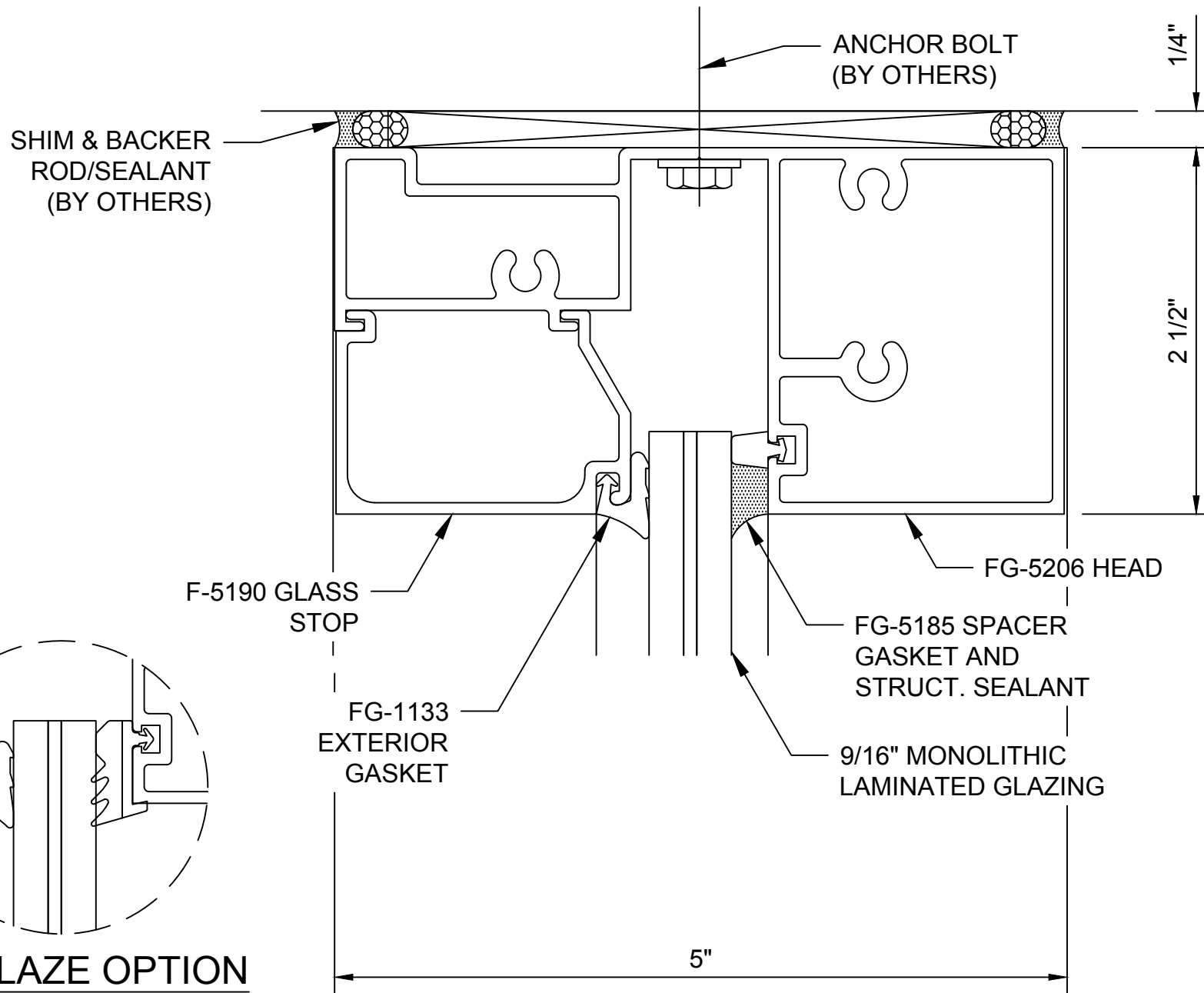


O.H.C.C - Overhead Concealed Closer  
O.H.S.C - Overhead Surface Closer

For specific product applications contact an  
Oldcastle BuildingEnvelope® representative

## MODEL: ELEV-HR-MSD375-WSD500-FG5000

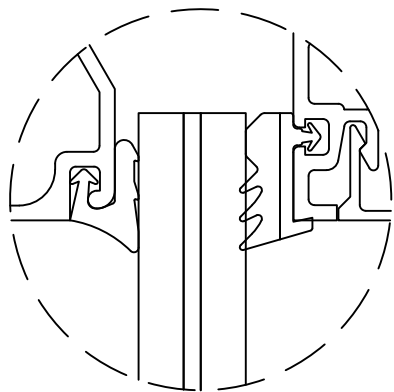
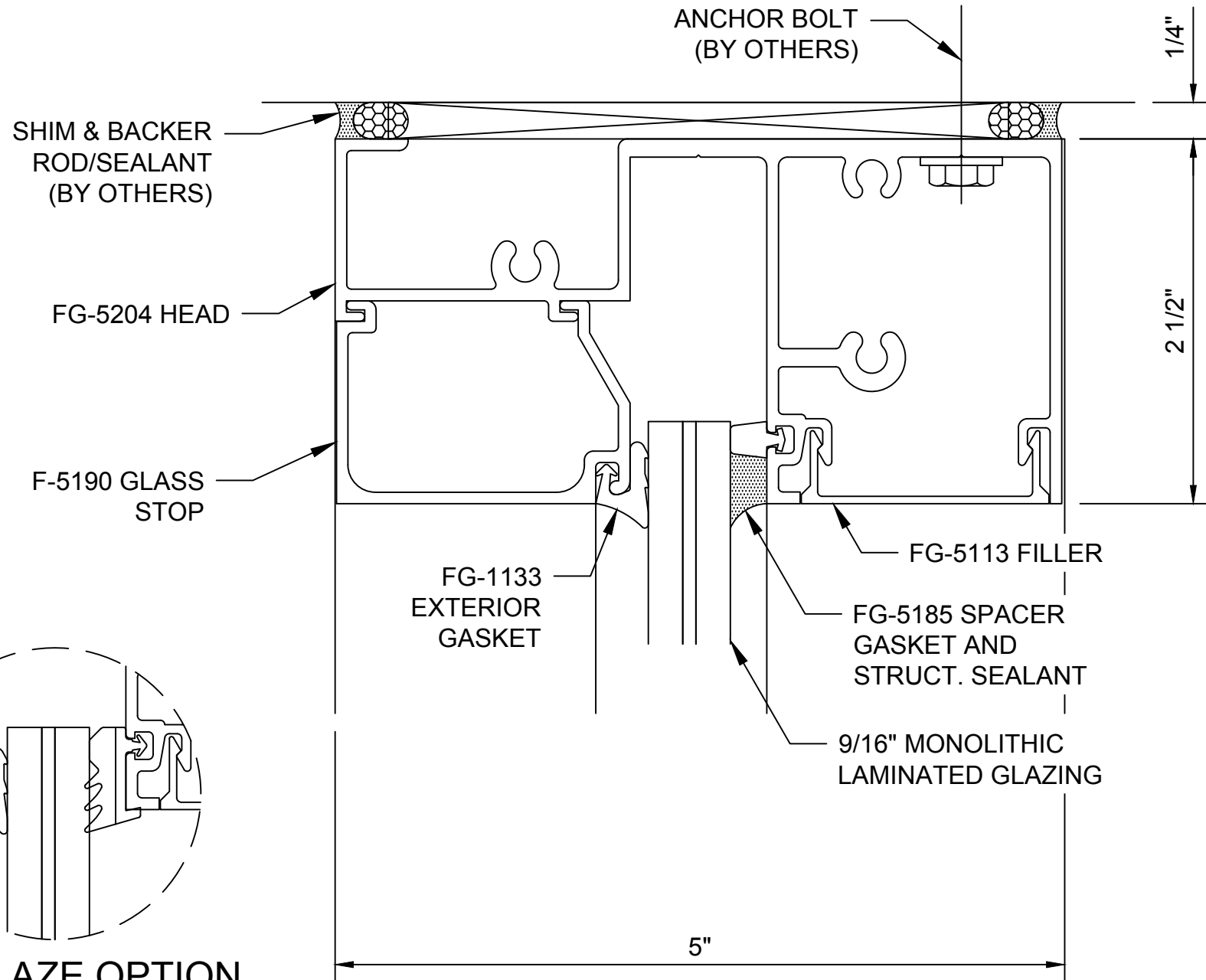
MEDIUM/WIDE STILE HURRICANE RESISTANT DOORS WITH FG-5000 FRAMING  
WET/DRY GLAZED



## DRY GLAZE OPTION

FG-1133 EXT. GASKET  
FG-5948 INT. GASKET

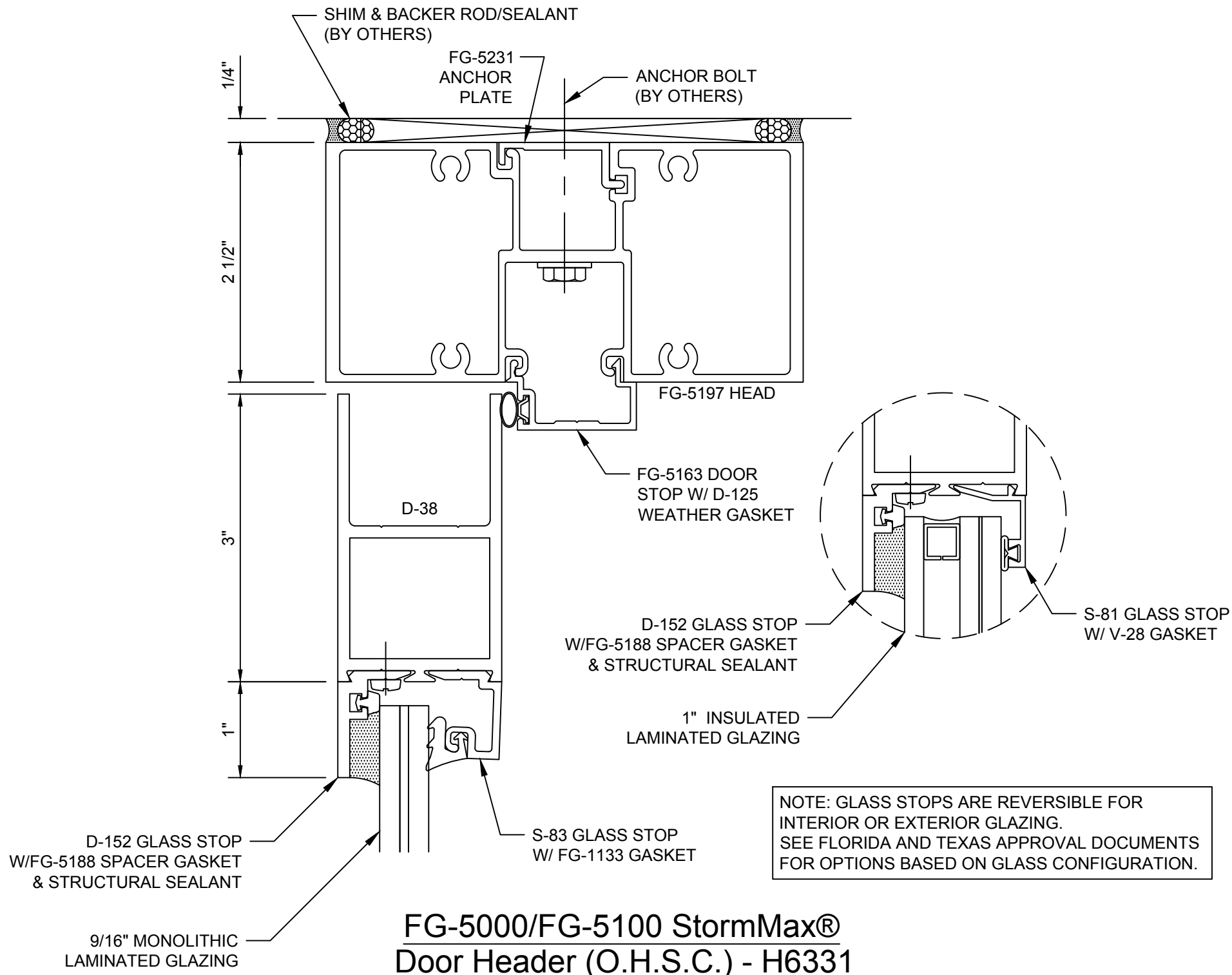
## FG-5000 StormMax® Head - H6301

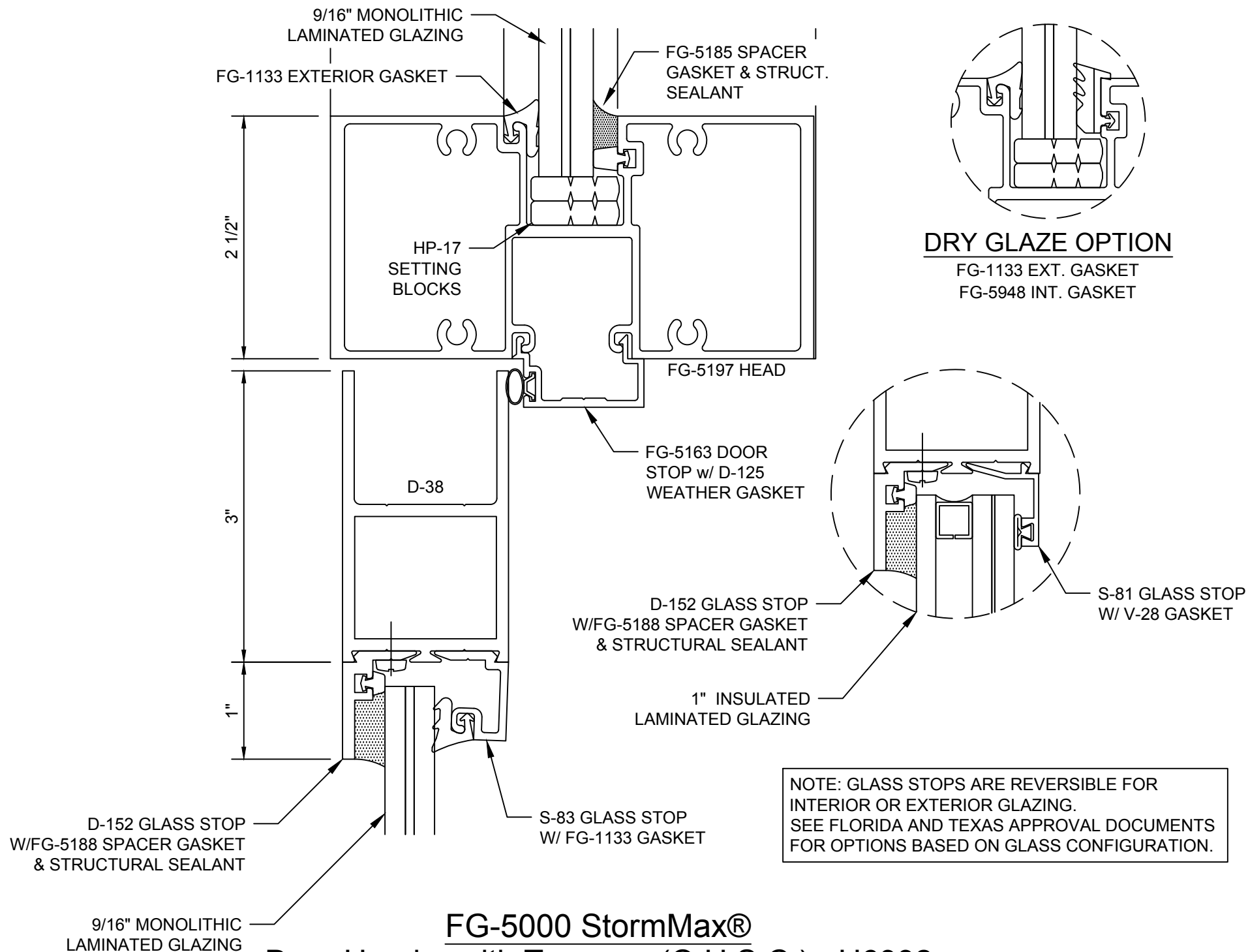


## DRY GLAZE OPTION

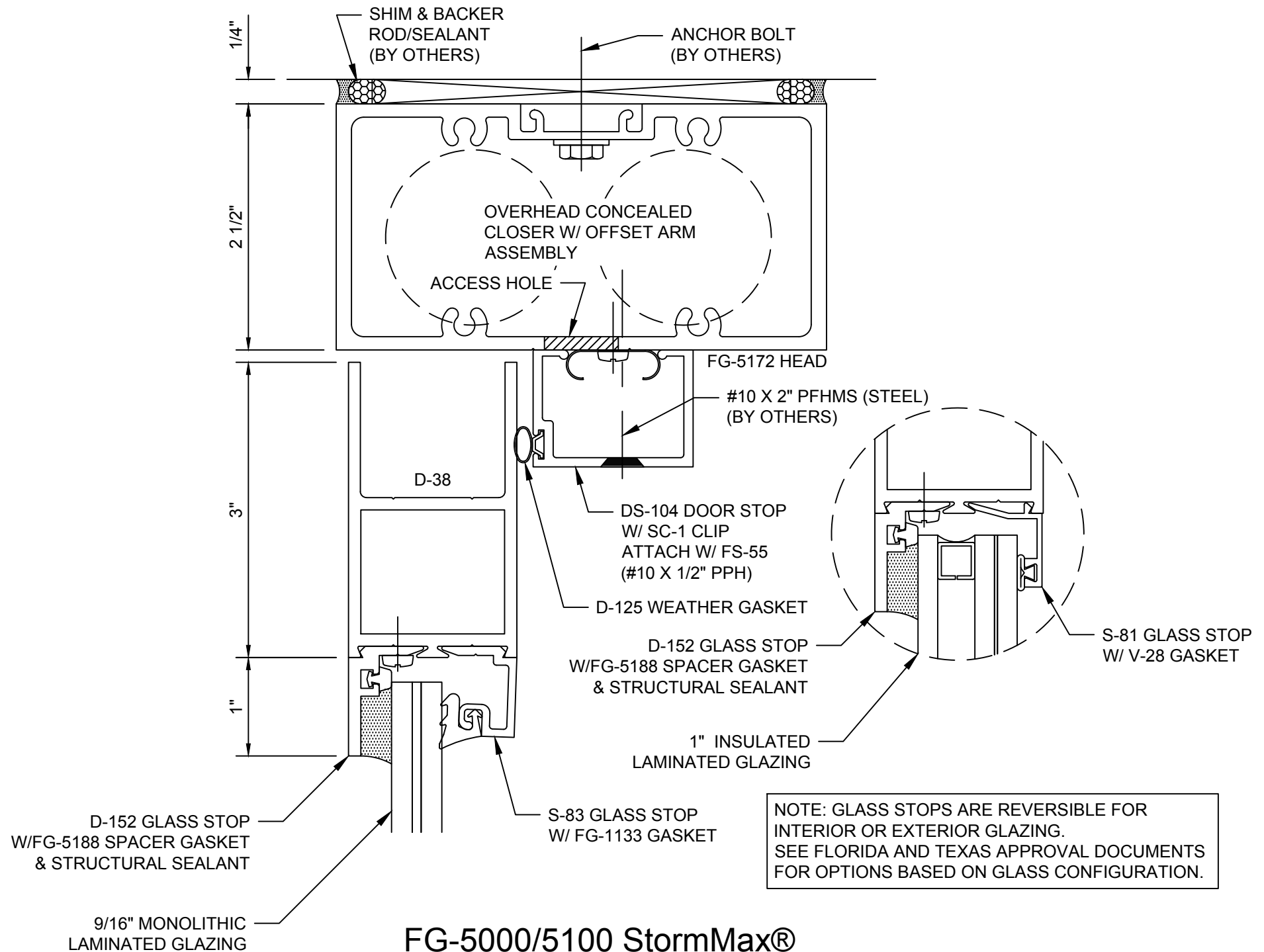
FG-1133 EXT. GASKET  
FG-5948 INT. GASKET

## FG-5000 StormMax® Transom Head - H6304

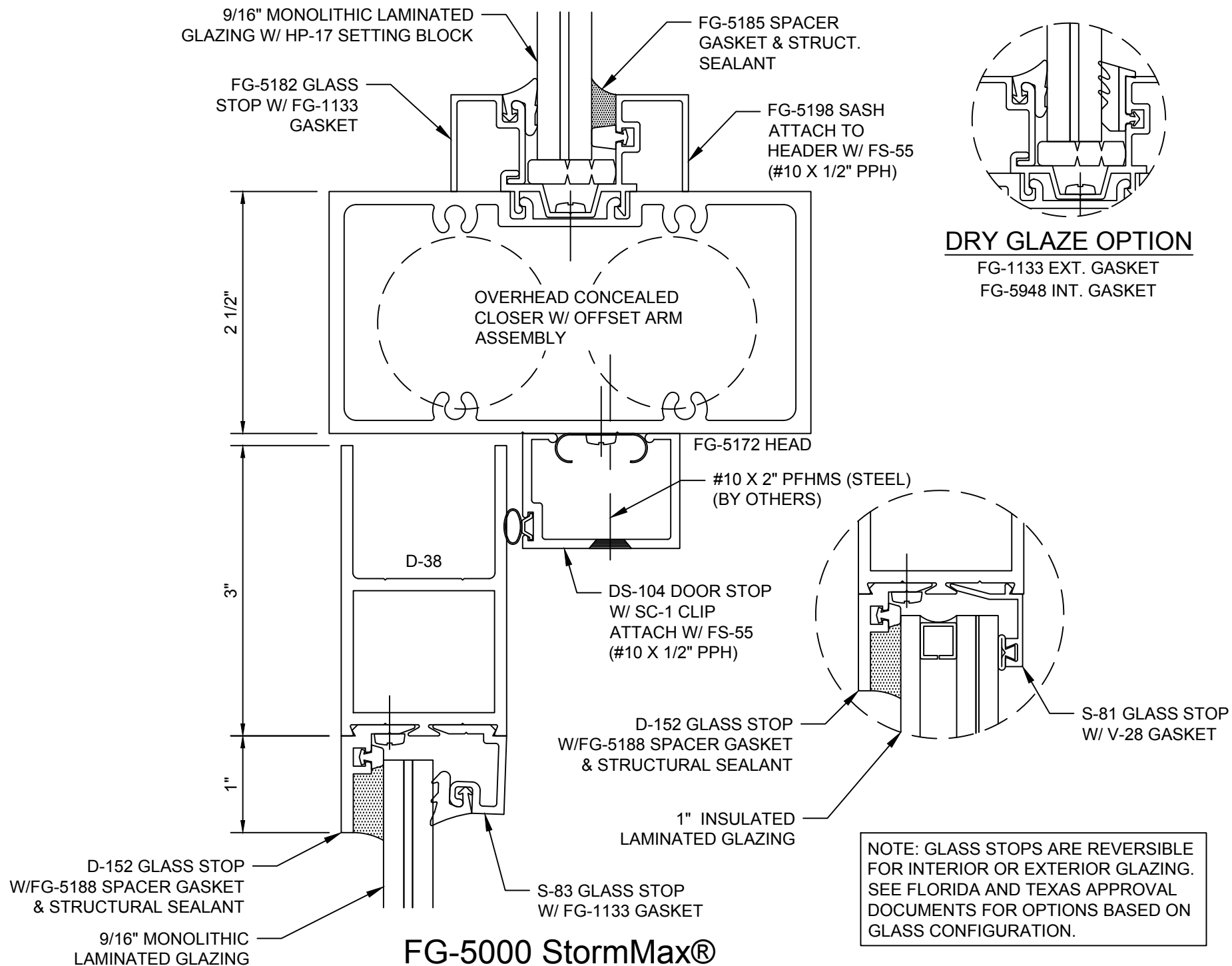




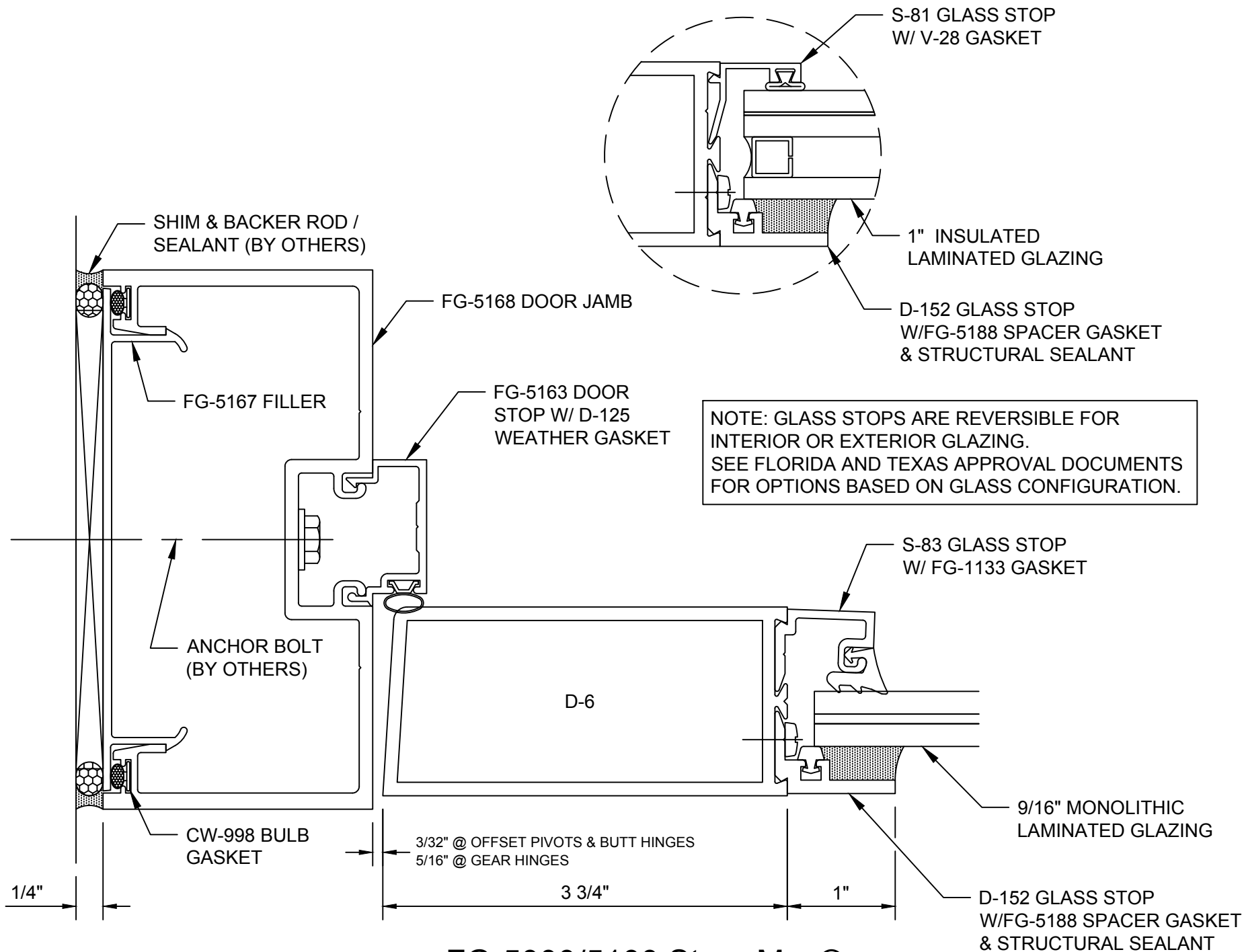
**FG-5000 StormMax®**  
**Door Header with Transom (O.H.S.C.) - H6332**



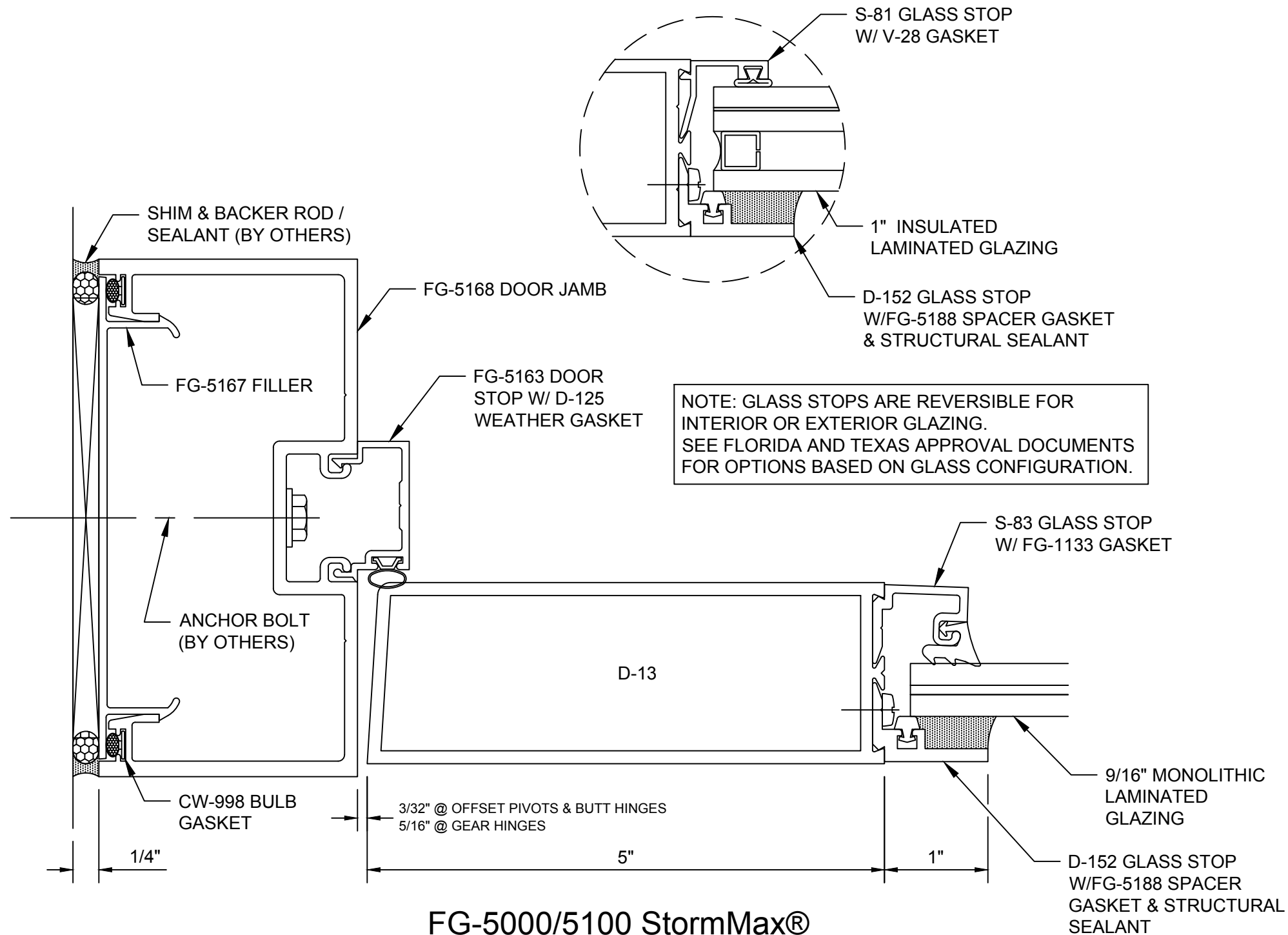
## **FG-5000/5100 StormMax®** **Door Header (O.H.C.C.) - H6333**



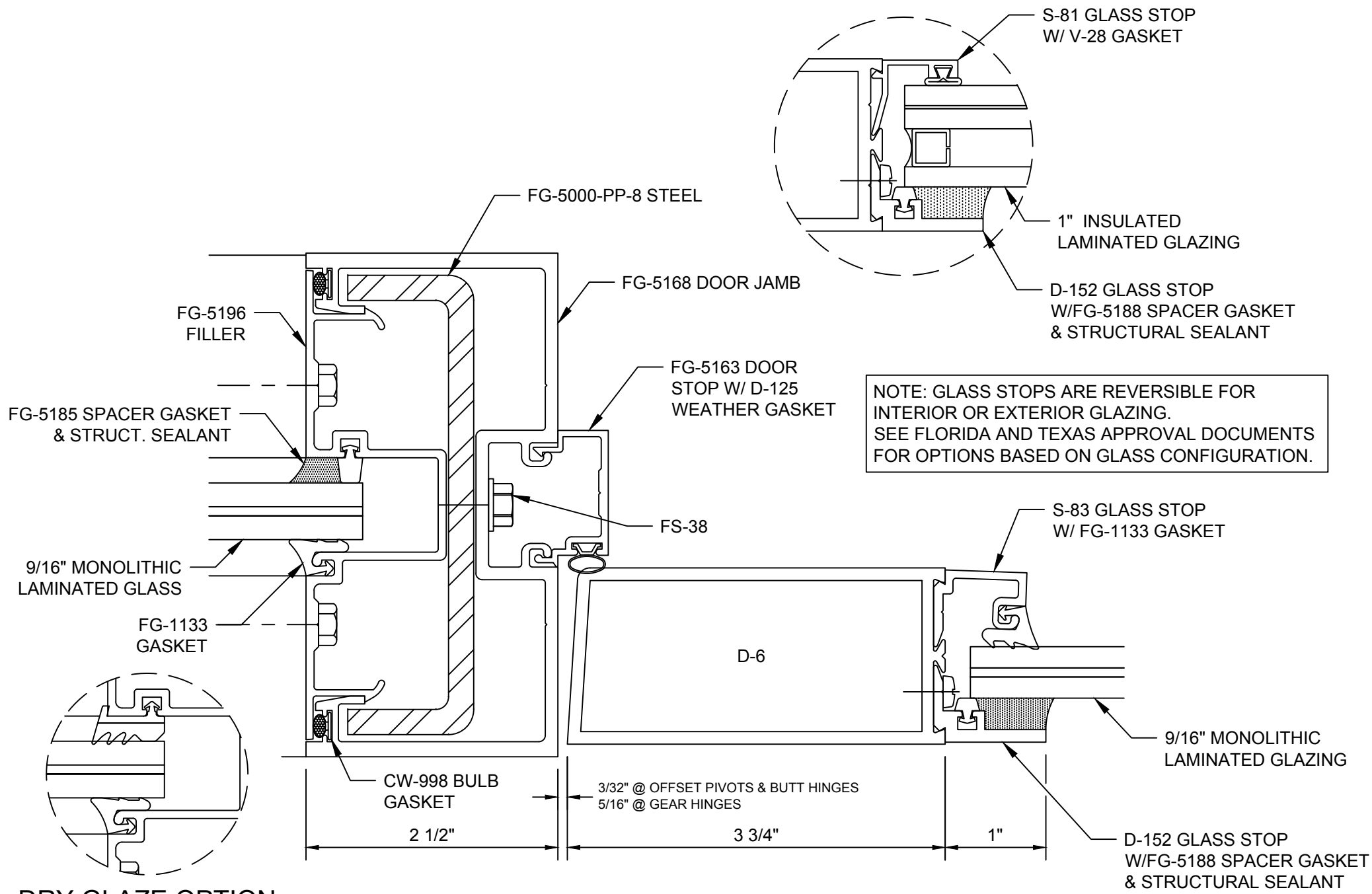




**FG-5000/5100 StormMax®**  
**Door Jamb - Medium Stile - V6331M**



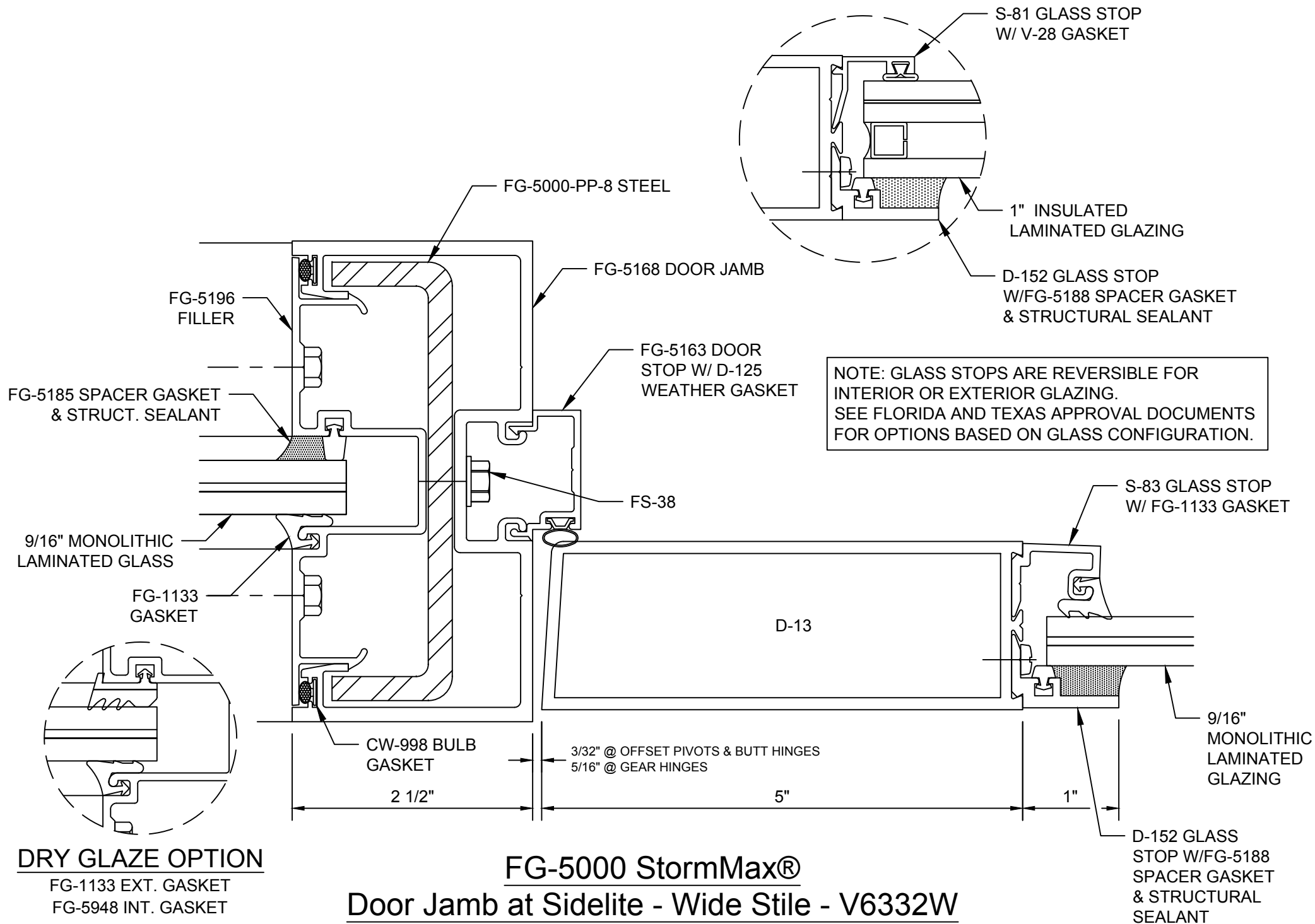
**FG-5000/5100 StormMax®**  
**Door Jamb - Wide Stile - V6331W**

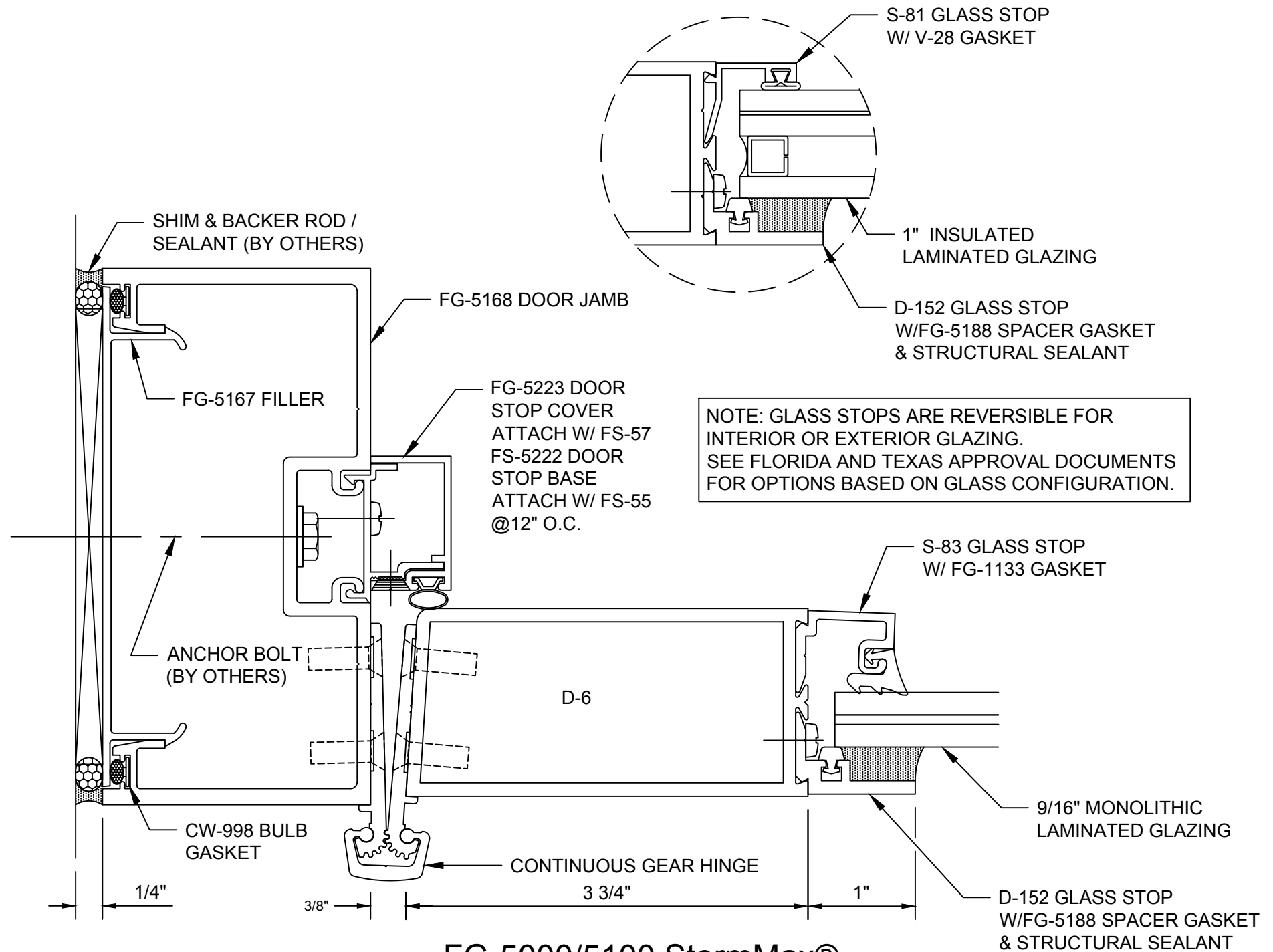


### DRY GLAZE OPTION

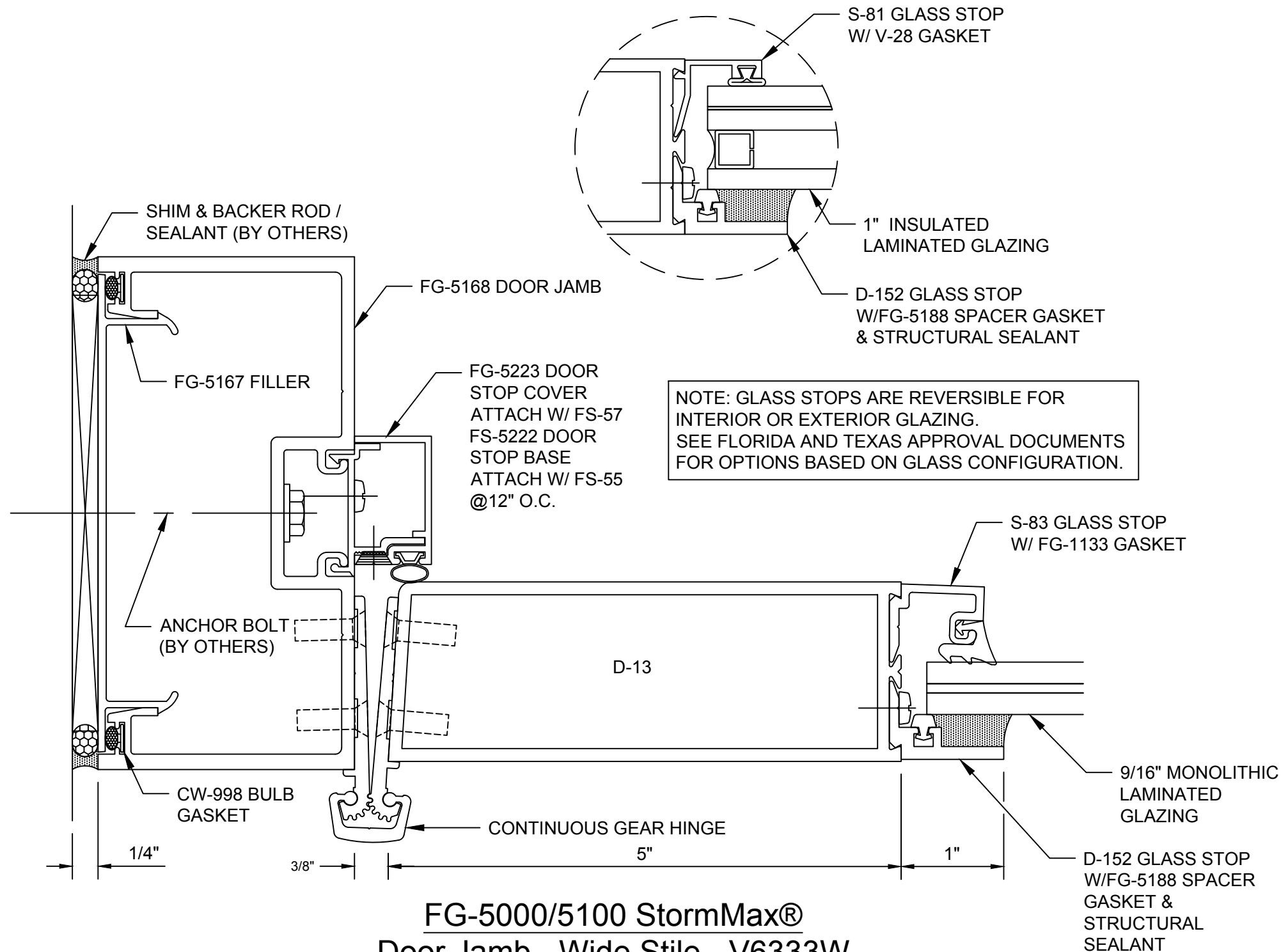
FG-1133 EXT. GASKET  
FG-5948 INT. GASKET

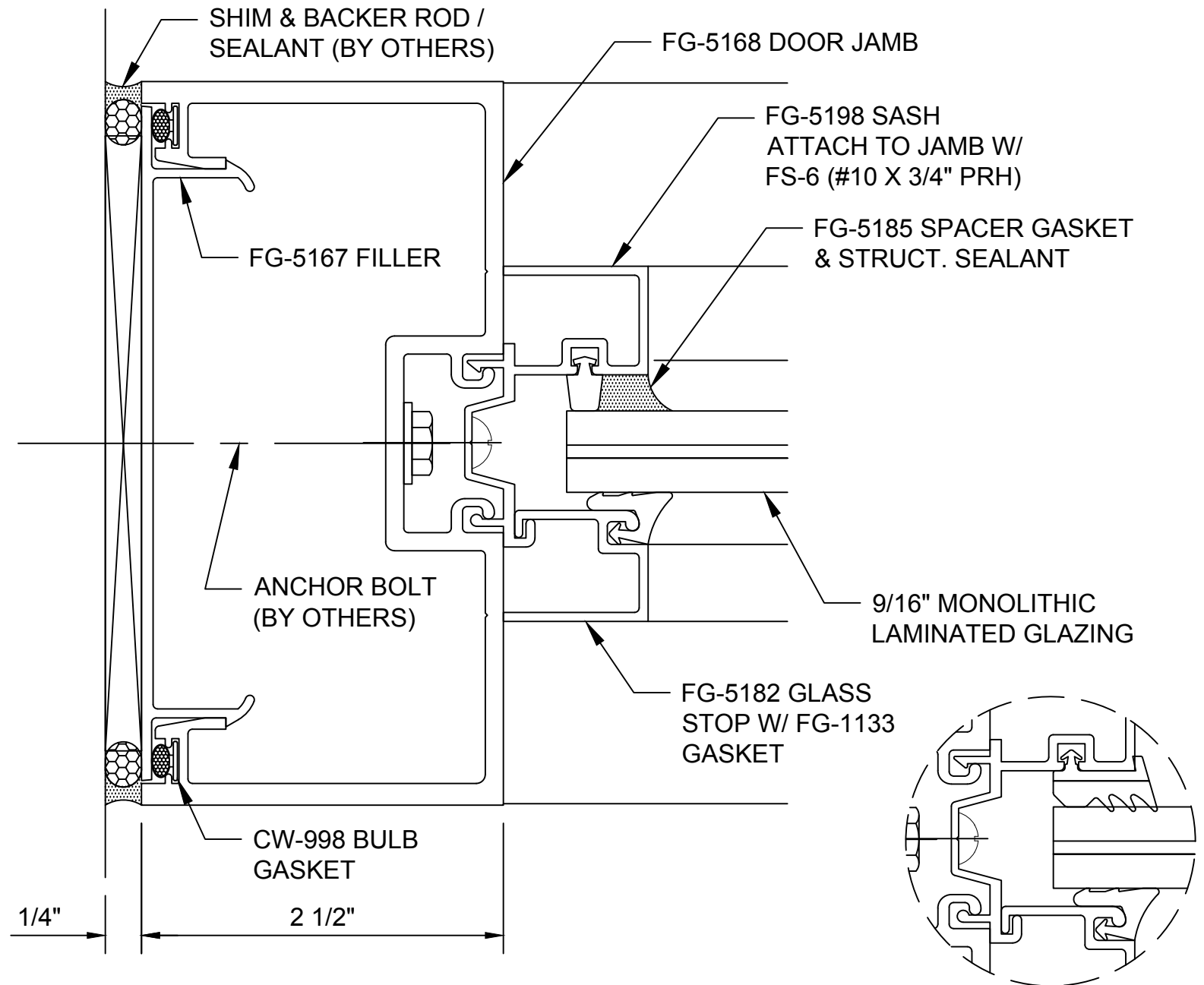
## FG-5000 StormMax® Door Jamb at Sidelite - Medium Stile - V6332M





**FG-5000/5100 StormMax®**  
**Door Jamb - Medium Stile - V6333M**

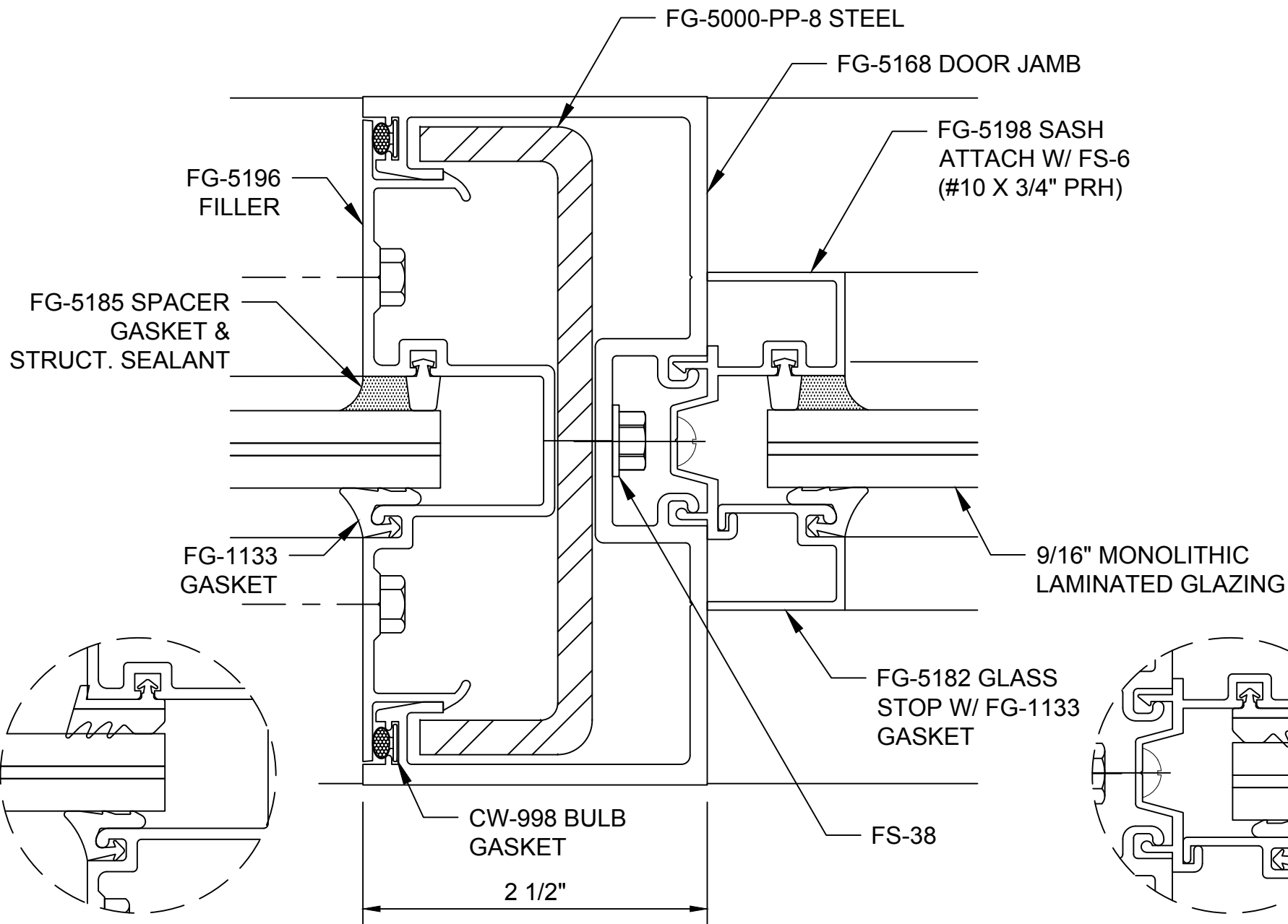




**FG-5000 StormMax®  
Transom Jamb - V6334**

**DRY GLAZE OPTION**

FG-1133 EXT. GASKET  
FG-5948 INT. GASKET



## DRY GLAZE OPTION

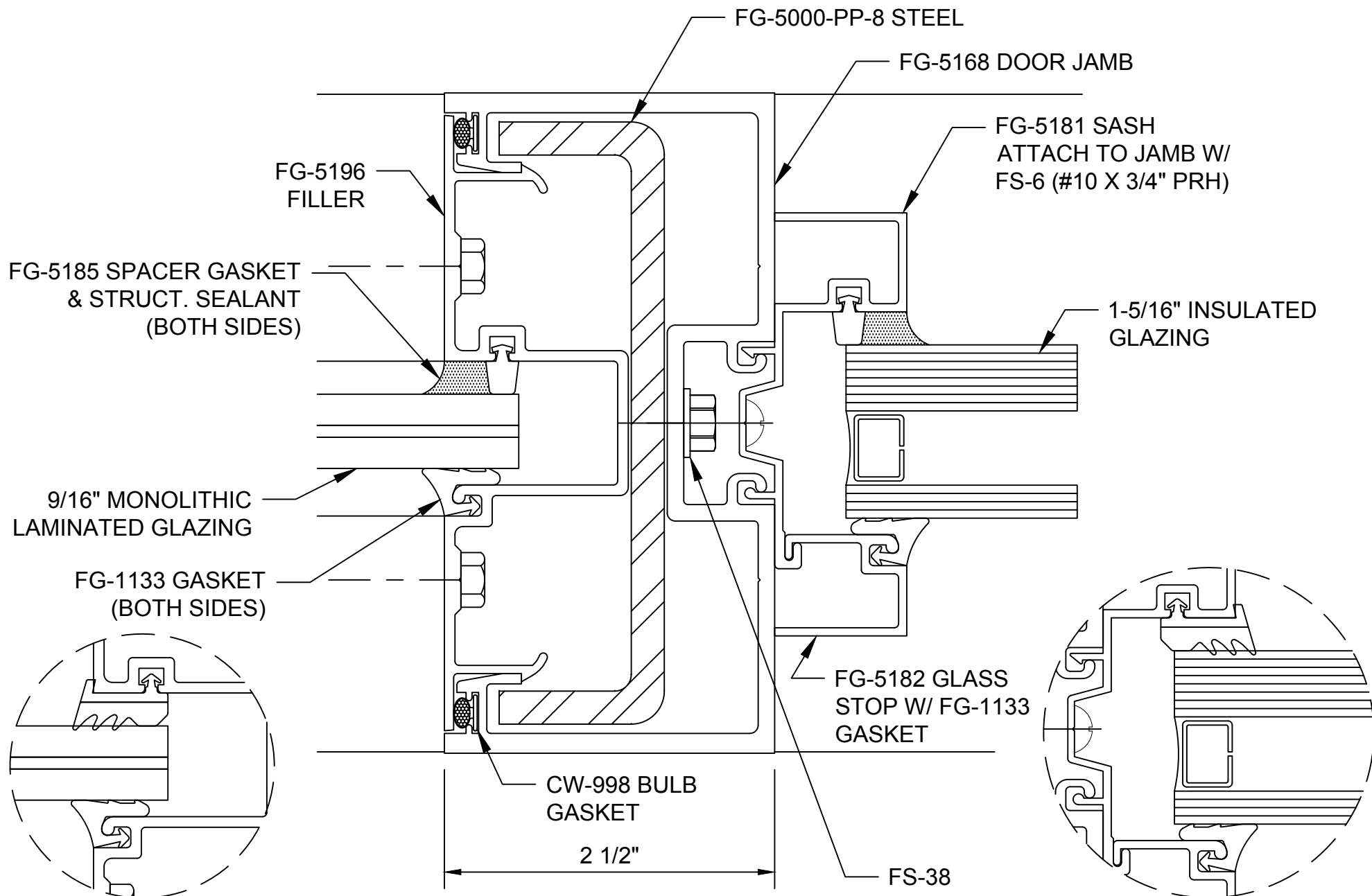
FG-1133 EXT. GASKET  
FG-5948 INT. GASKET

## FG-5000 StormMax® Transom Jamb w/ Sidelite - V6335

## DRY GLAZE OPTION

FG-1133 EXT. GASKET  
FG-5948 INT. GASKET





## DRY GLAZE OPTION

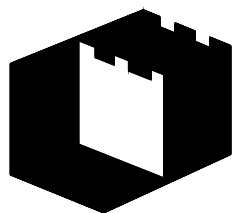
FG-1133 EXT. GASKET  
FG-5948 INT. GASKET

**FG-5000 StormMax®**

**Transom Jamb w/ Sidelite - 1-5/16" Glazing - V6336**

## DRY GLAZE OPTION

FG-1133 EXT. GASKET  
FG-5948 INT. GASKET



**Oldcastle** BuildingEnvelope®

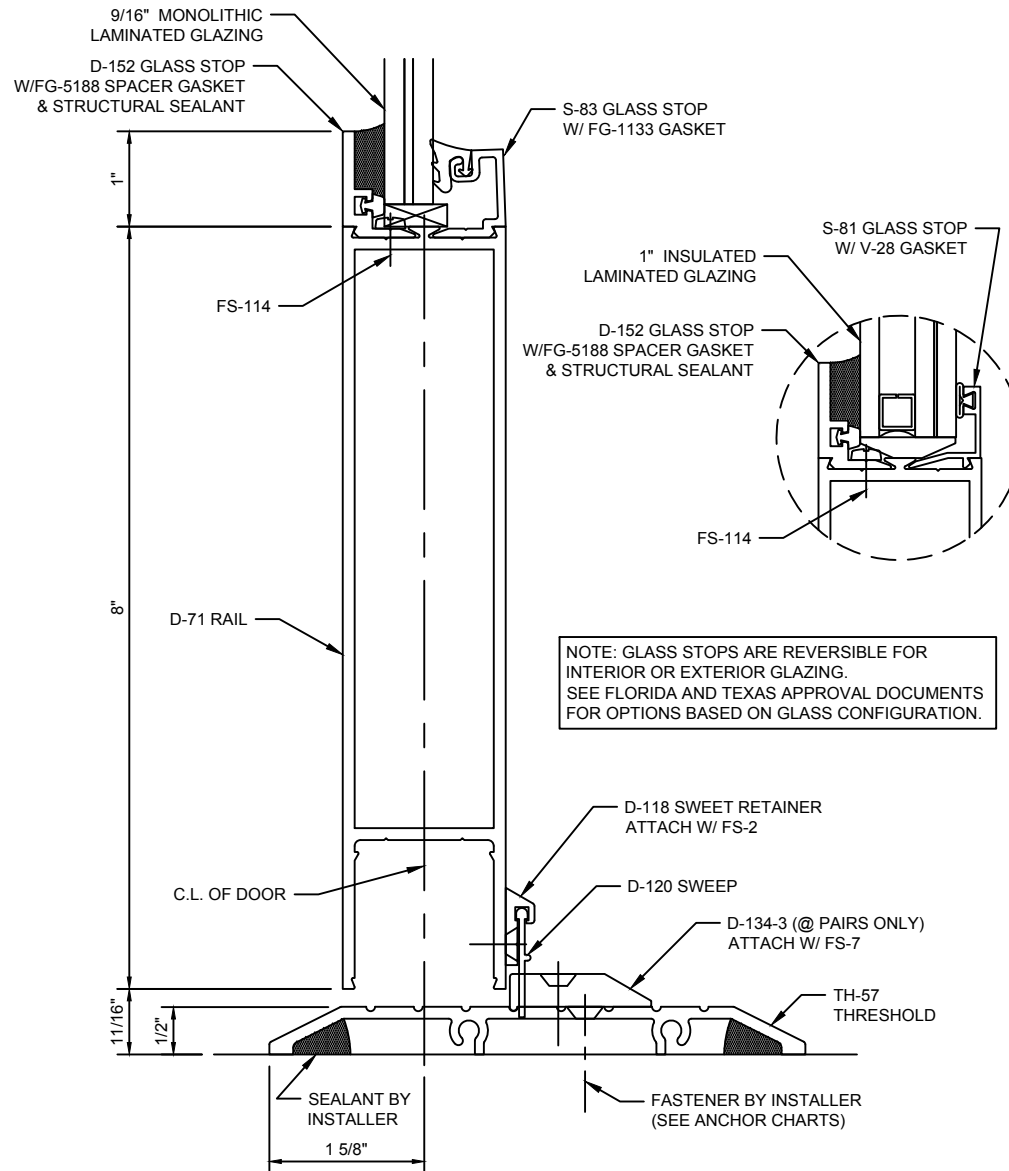
1-866-Oldcastle (653-2278) - [www.obe.com](http://www.obe.com)

## MSD-375 / WSD-500 StormMax® Hurricane-Resistant Entrance Rails, Stiles & Panels

HD6157-Btm-Rail-8in  
HD6184-Mid-Panel-650in  
HD6186-Mid-Panel-8in  
VD6145-Meeting-Stiles  
VD6146-Meeting-Stiles

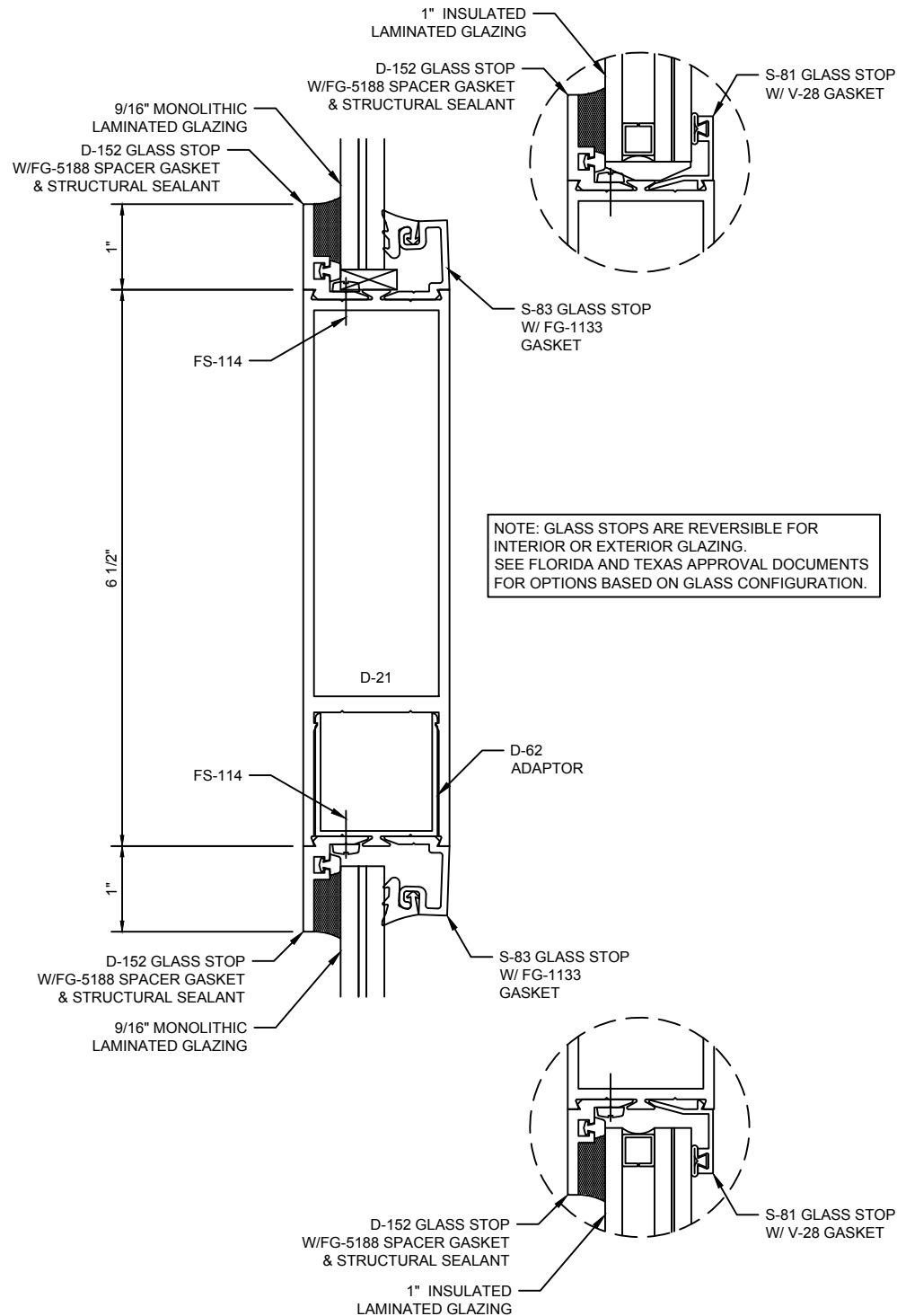
## Table of Contents

**MSD-375 / WSD-500 StormMax® Hurricane-Resistant Entrance**  
**Bottom Rail & Threshold - HD6157**

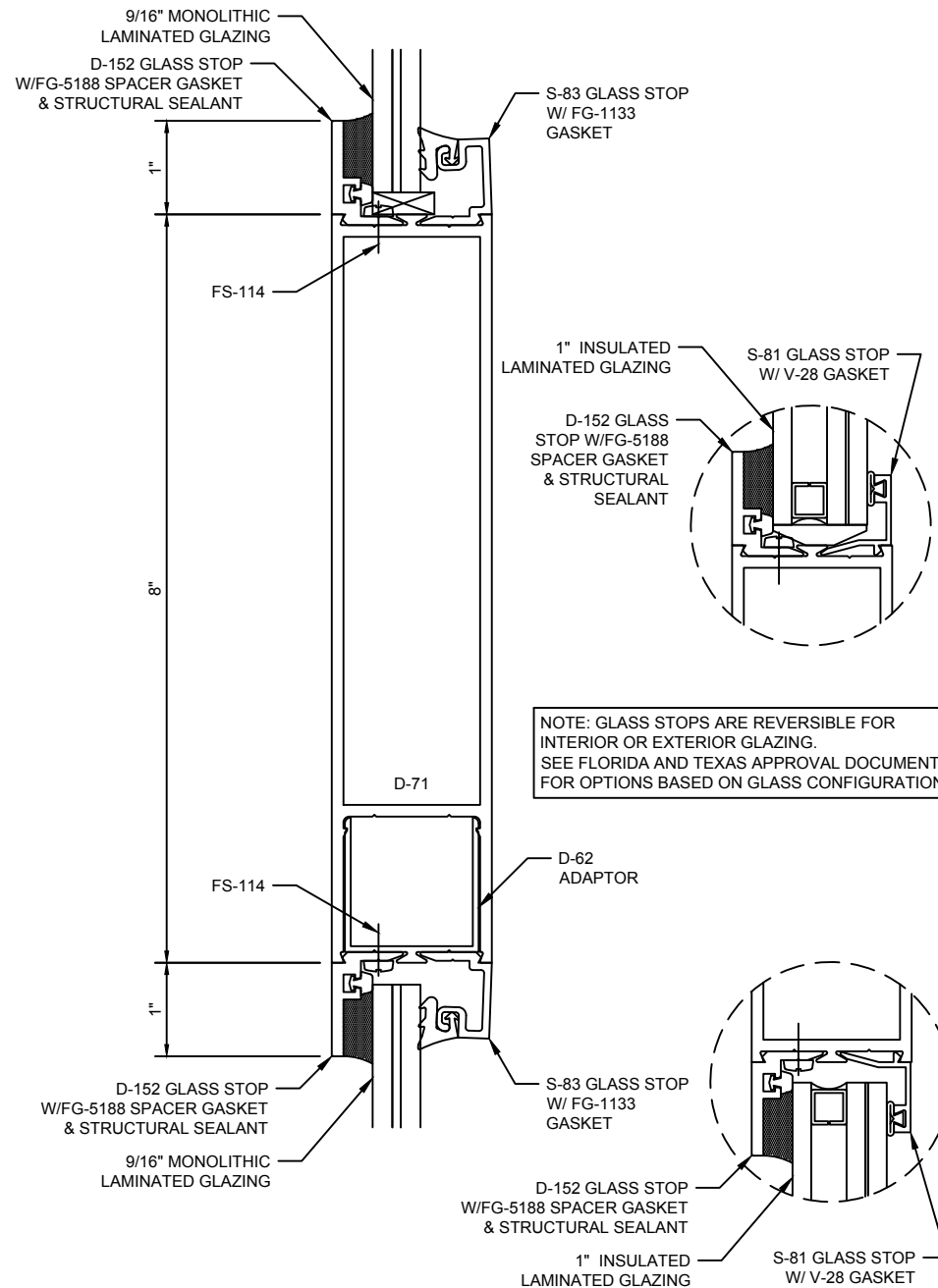


# MSD-375 / WSD-500 StormMax® Hurricane-Resistant Entrance

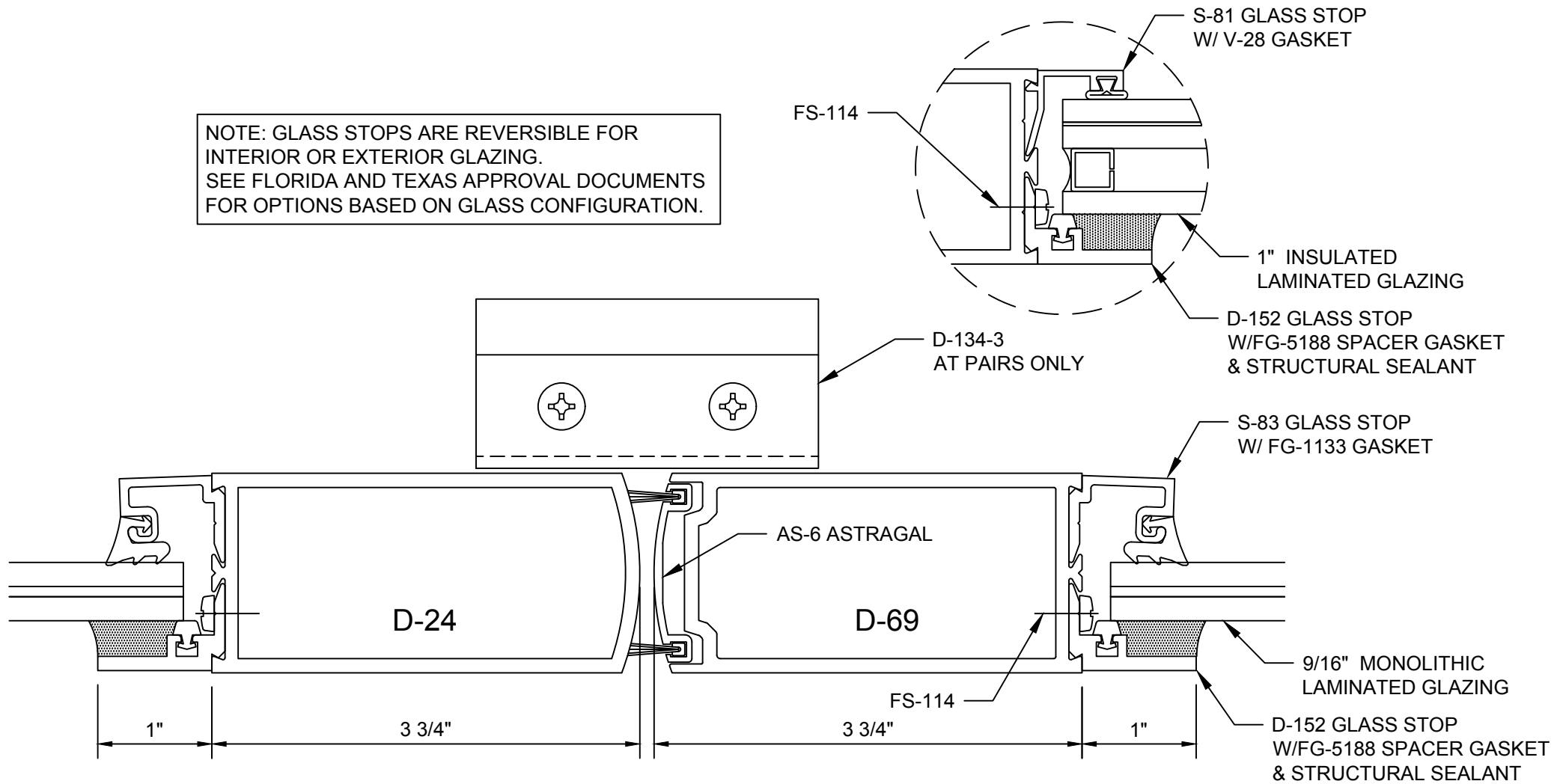
## Mid-Panel - HD6184



**MSD-375 / WSD-500 StormMax® Hurricane-Resistant Entrance**  
**Mid-Panel - HD6186**

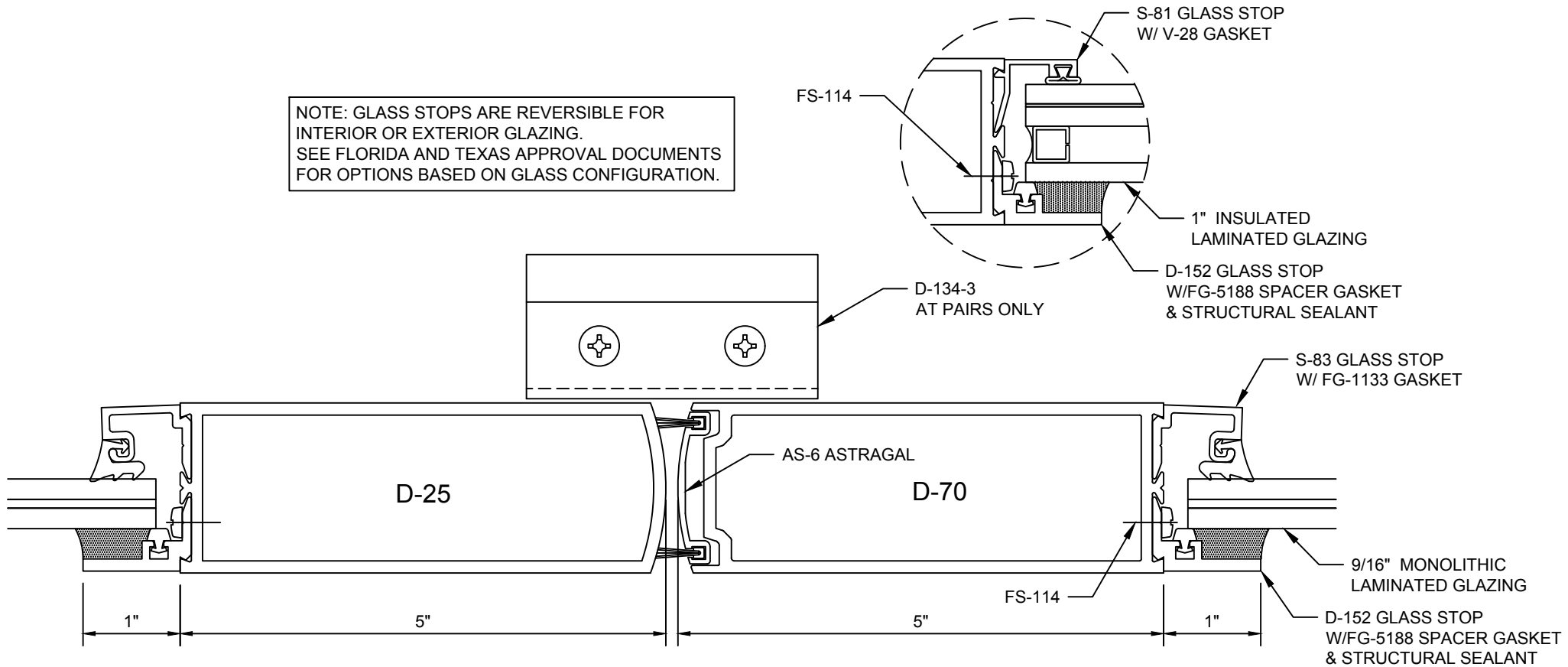


NOTE: GLASS STOPS ARE REVERSIBLE FOR INTERIOR OR EXTERIOR GLAZING. SEE FLORIDA AND TEXAS APPROVAL DOCUMENTS FOR OPTIONS BASED ON GLASS CONFIGURATION.



## MSD-375 StormMax® Hurricane-Resistant Entrance Meeting Stiles - VD6145

NOTE: GLASS STOPS ARE REVERSIBLE FOR INTERIOR OR EXTERIOR GLAZING. SEE FLORIDA AND TEXAS APPROVAL DOCUMENTS FOR OPTIONS BASED ON GLASS CONFIGURATION.



## WSD-500 StormMax® Hurricane-Resistant Entrance Meeting Stiles - VD6146