

# Oldcastle BuildingEnvelope®

1-866-Oldcastle (653-2278) - [www.obe.com](http://www.obe.com)

## MSD-375 BLASTMAX® MEDIUM STILE ENTRANCE w/ RELIANCE™ BLASTMAX® CURTAIN WALL FRAMING

*(Drawing numbers---i.e., H4961---used as CAD detail reference only)*

### Elevation

H4961	Door Head
H4962	Door Head w/ Transom
HD6159	8" Bottom Rail & Threshold
HD6185	6-1/2" Mid-Panel
HD6187	8" Mid-Panel
V4961	Door Jamb
V4962	Door Jamb w/ Sidelite
VD6146	Meeting Stiles

## Table of Contents

W/O TRANSOM

H4961

H4962

W/O SIDELIGHT

V4961

V4962

MEETING STILES

VD6146

MID-PANEL

HD6185

HD6187

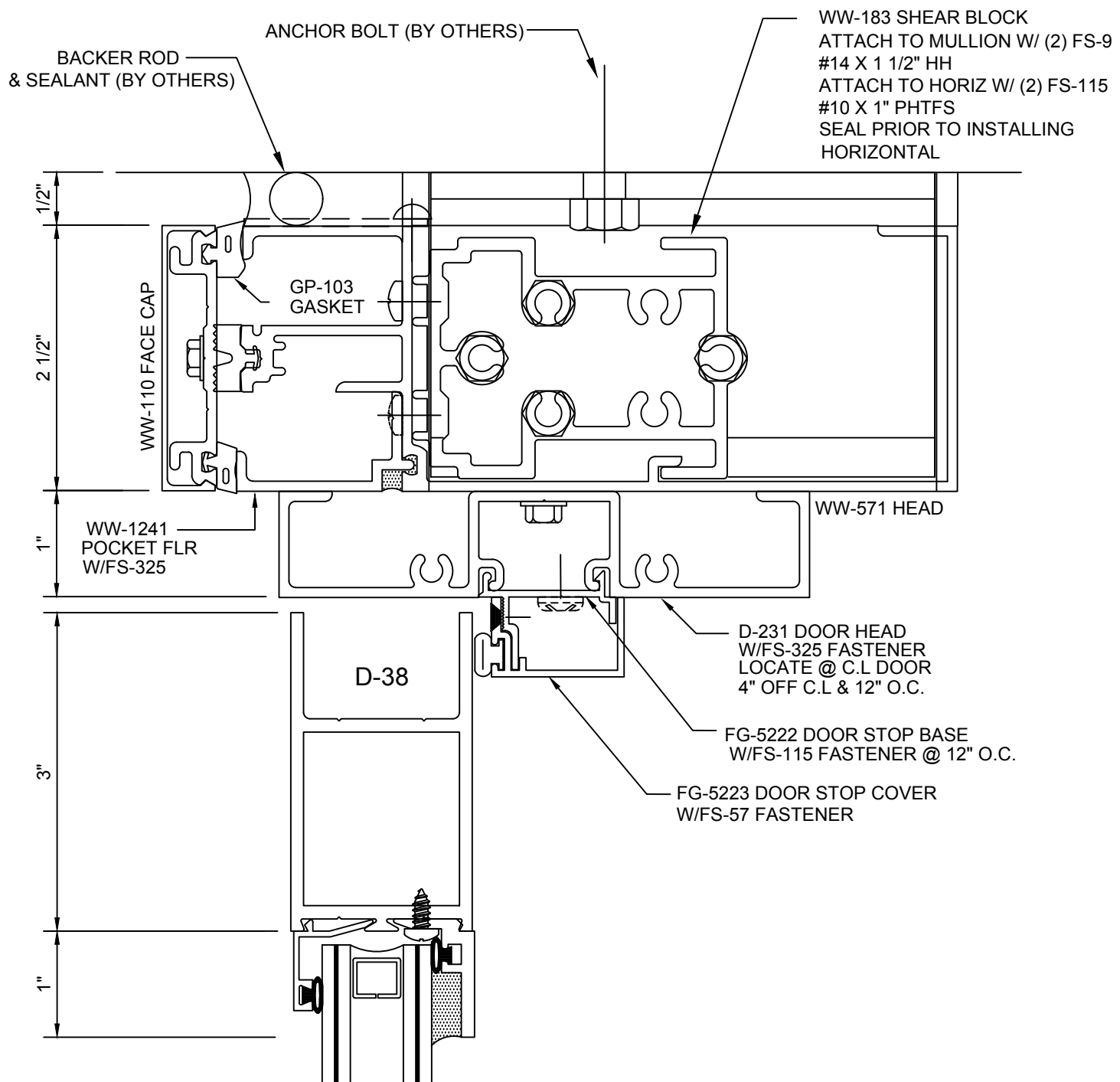
OPTION

HD6159

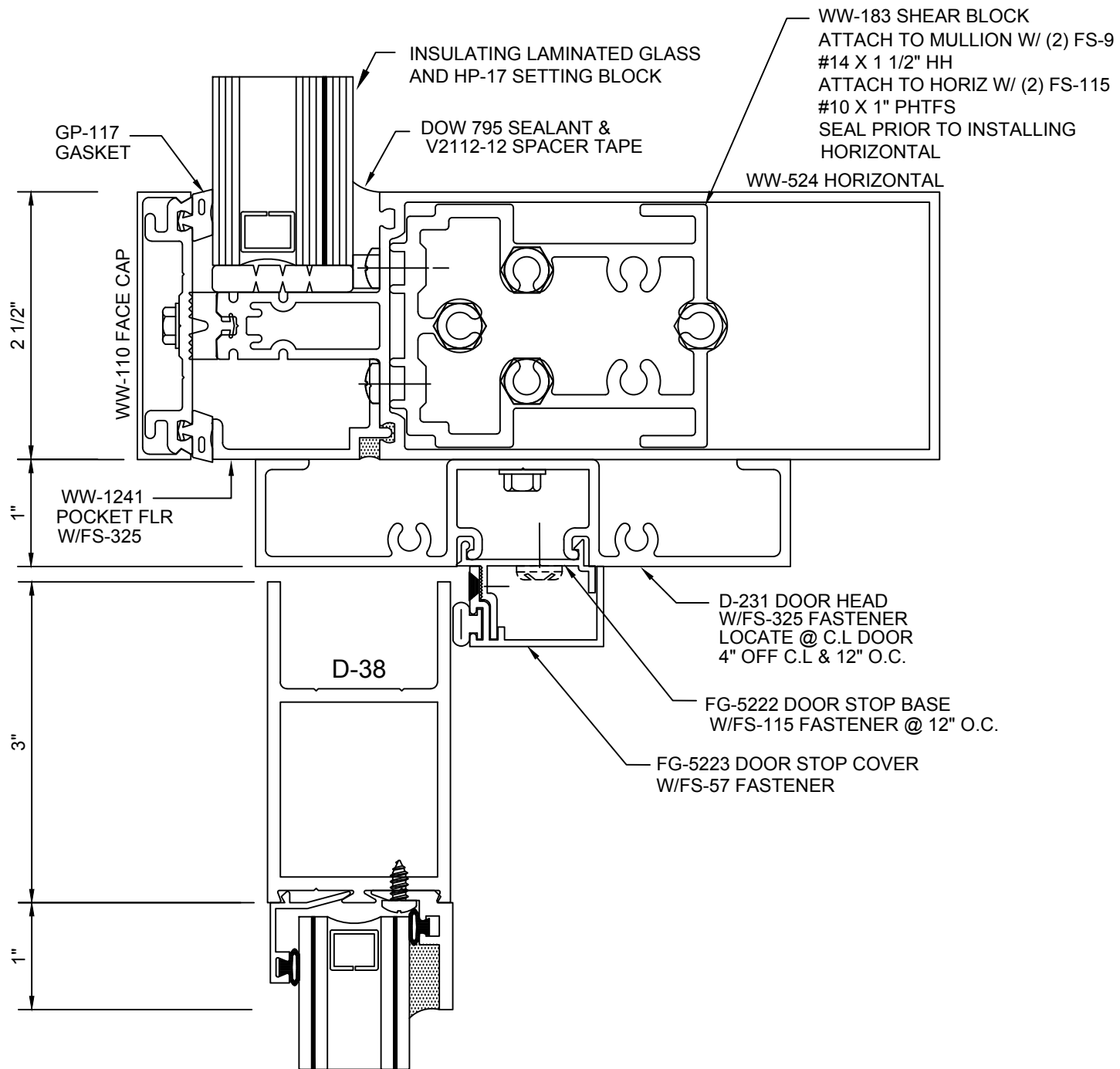
BOTTOM RAIL

NOTE: FOR SPECIFIC PRODUCT APPLICATIONS CONTACT AN  
OLDCASTLE BUILDINGENVELOPE™ REPRESENTATIVE

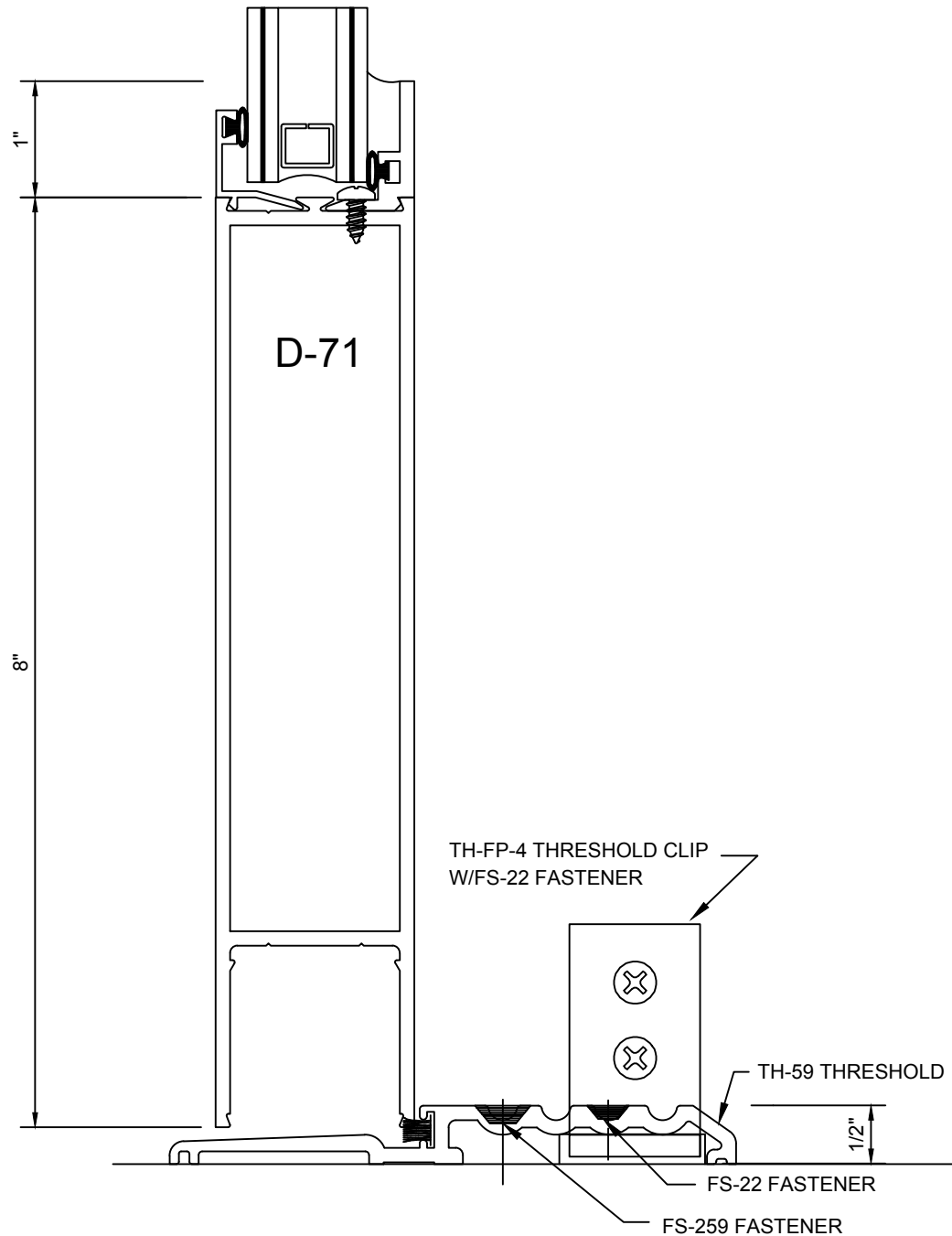
MSD-375 BlastMax® Medium Stile Entrance w/ 1" Insulating Laminated Glazing  
Reliance™ BlastMax® Curtain Wall Framing - Elevation



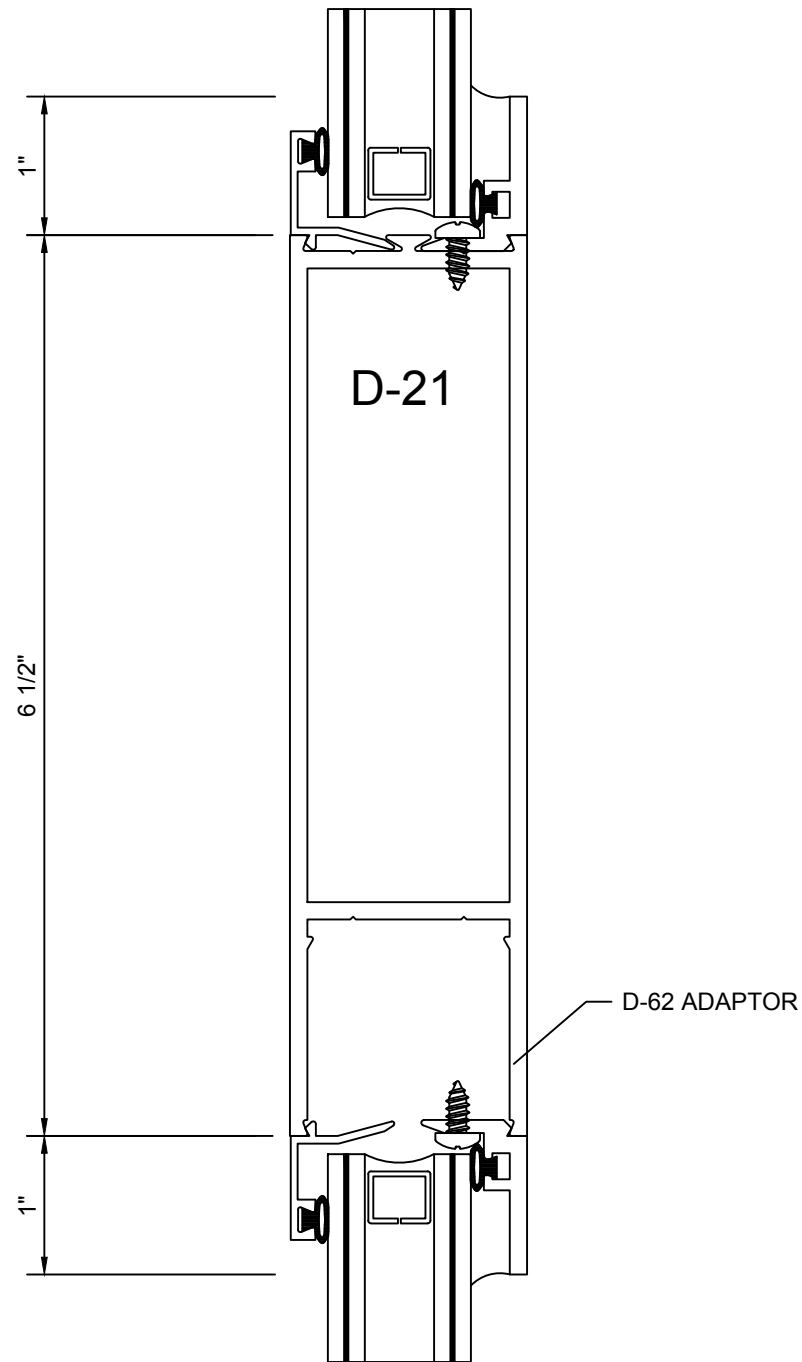
**Reliance™ BlastMax® Curtain Wall  
Door Head - H4961**



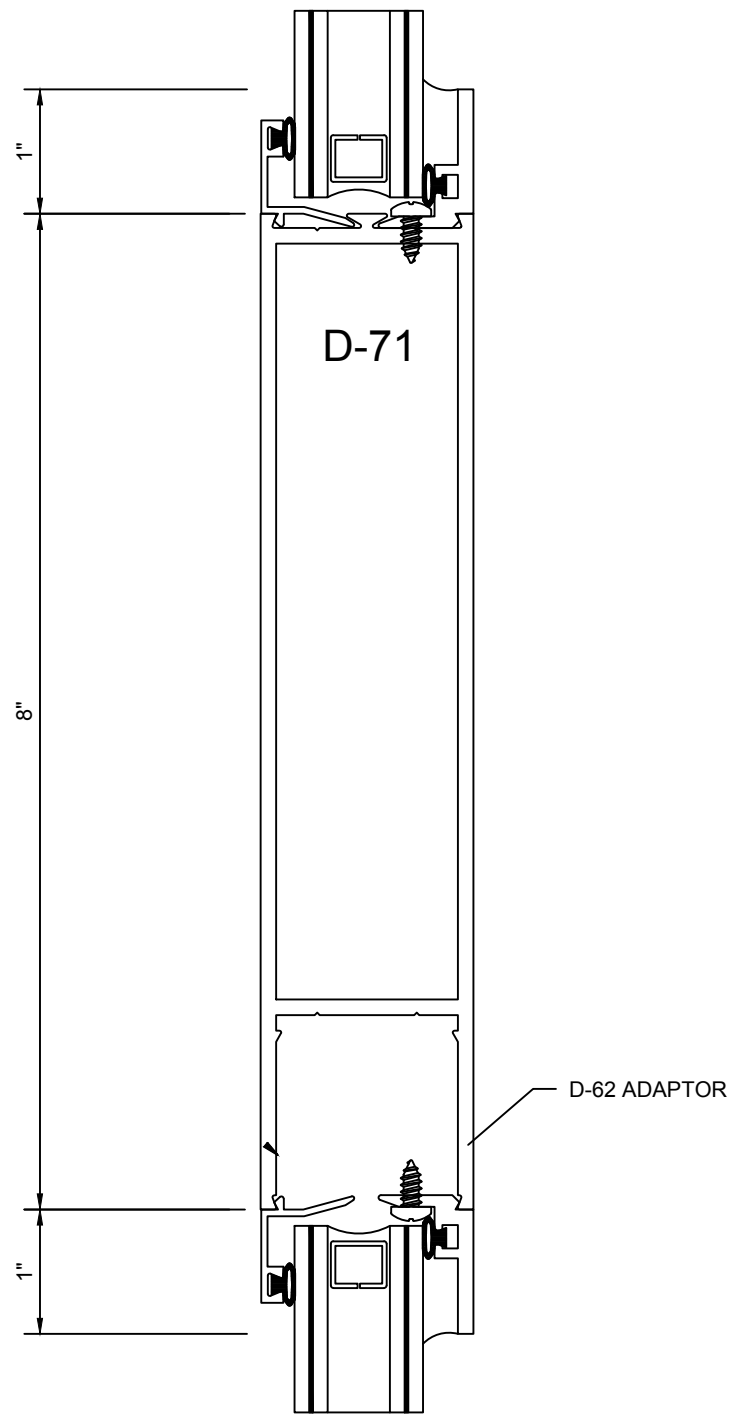
**Reliance™ BlastMax® Curtain Wall**  
**Door Head w/ Transom - H4962**



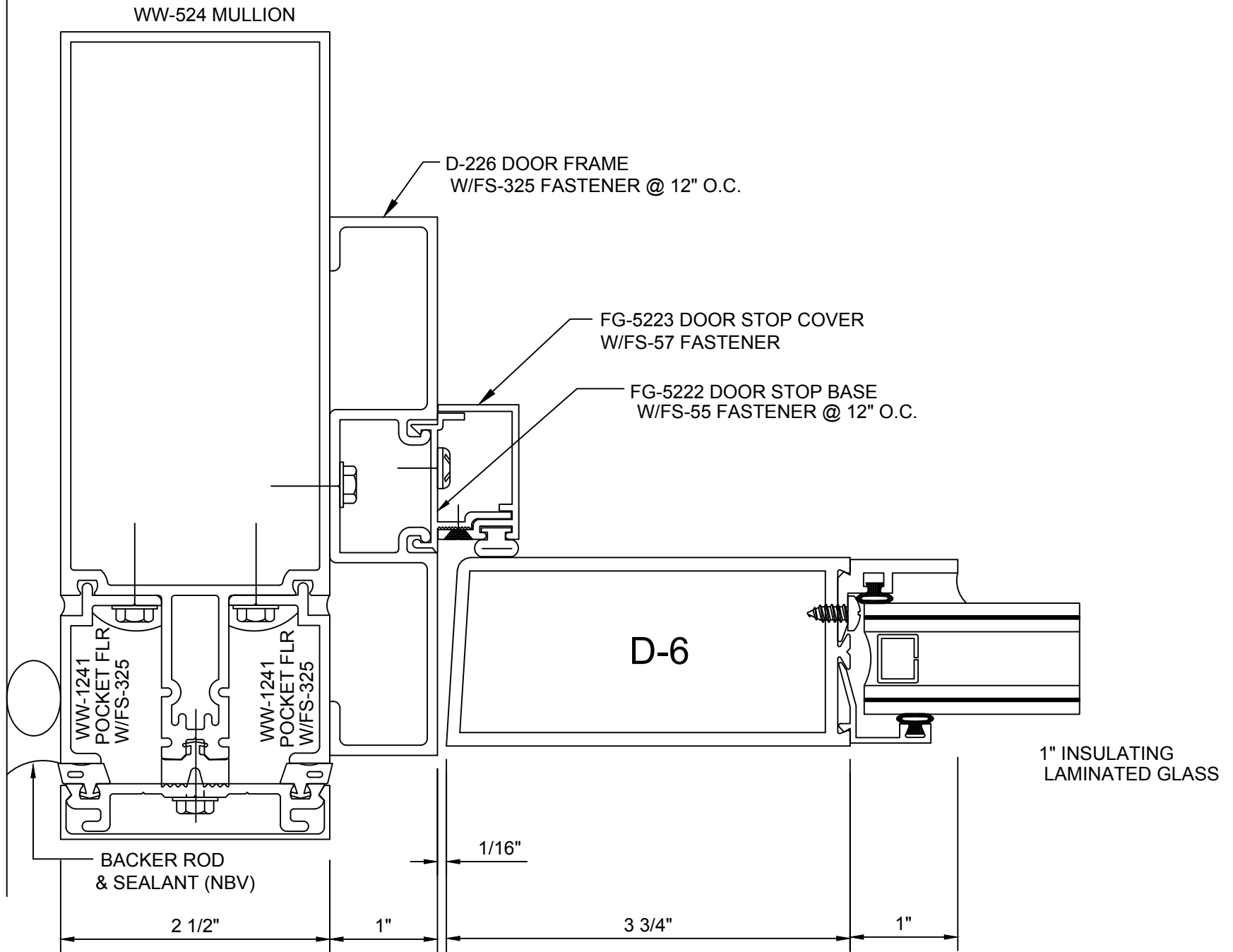
**MSD-375 BlastMax® Entrance  
Bottom Rail and Threshold - HD6159**



**MSD-375 BlastMax® Entrance**  
**6-1/2" Mid-Panel - HD6185**

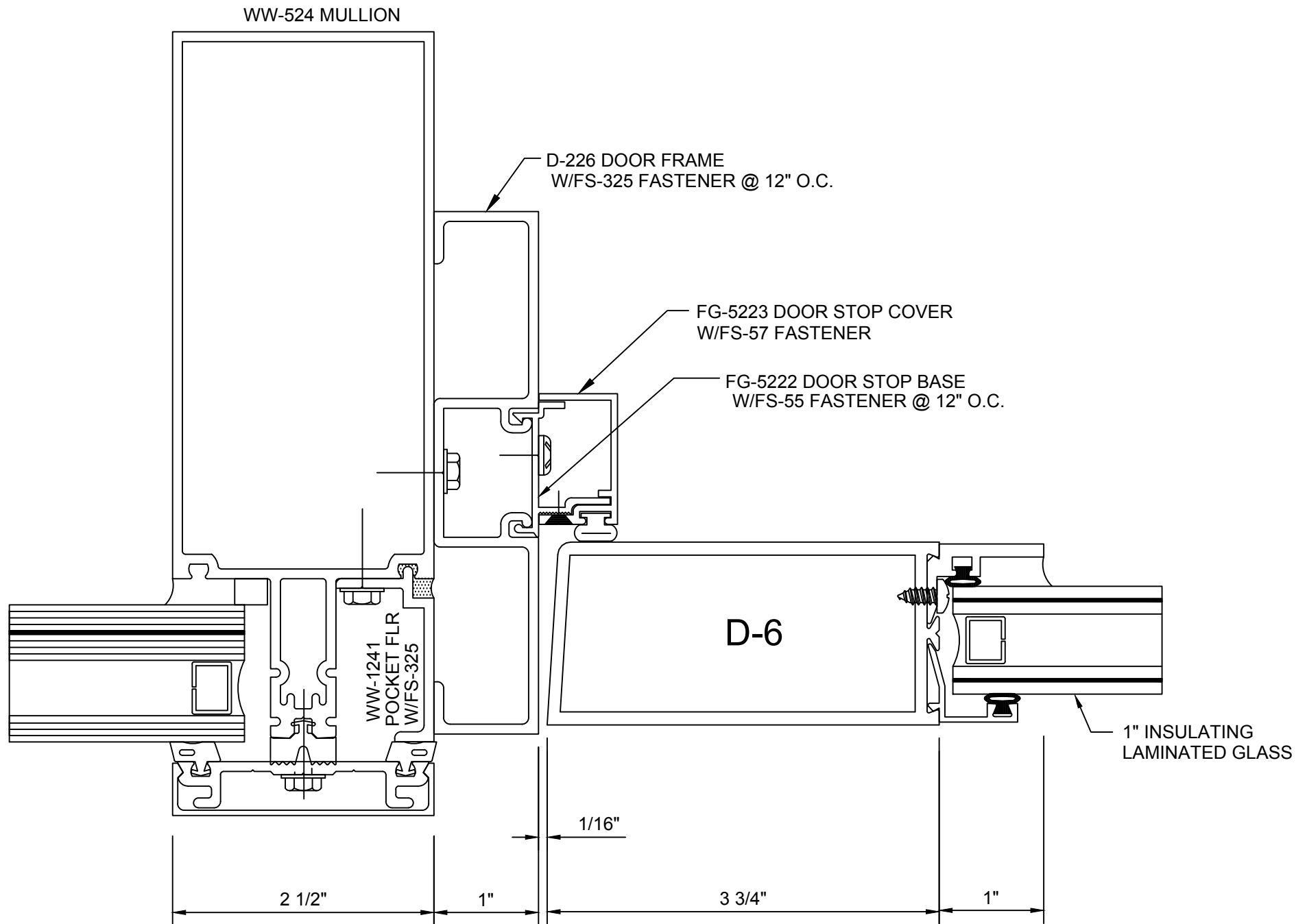


**MSD-375 BlastMax® Entrance**  
**8" Mid-Panel - HD6187**

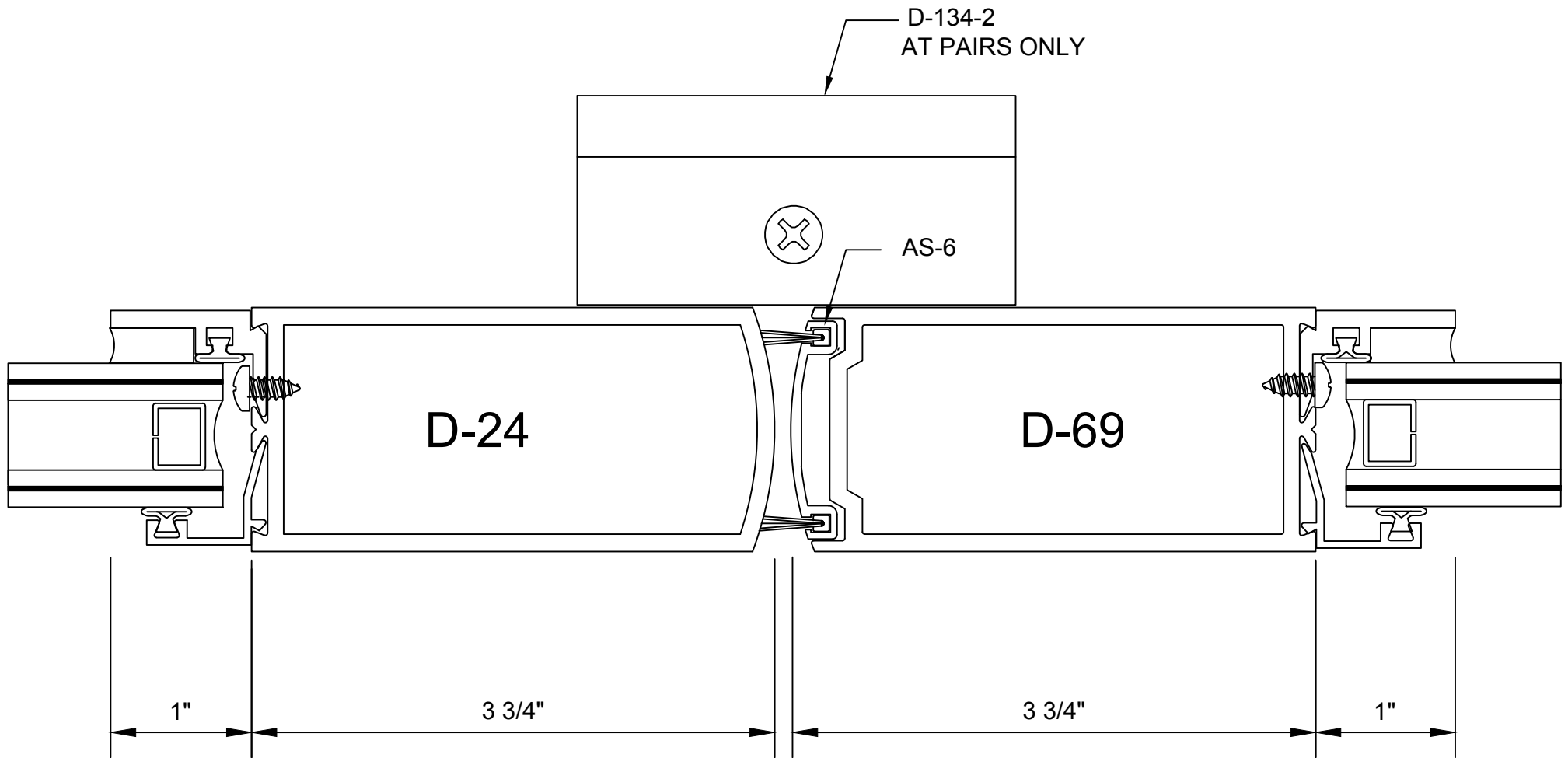


**Reliance™ BlastMax® Curtain Wall  
Door Jamb - V4961**





**Reliance™ BlastMax® Curtain Wall  
Door Jamb w/ Sidelite - V4962**



**MSD-375 BlastMax® Entrance**  
**Meeting Stiles - VD6146**